



Asset-Trade

Assessment & Sale of Used Assets

Ref. No.: 302-01121231

Overview and Technical Data:

DUNKES - HDZ 315/200/200 deep draw press

DUNKES



Year of Build: Jan 1991



Description:

Used DUNKES - HDZ 315/200/200 - Deep Drawing Press

Was relocated and overhauled for over 37,000 euros in 2009 by Schuler + Dunkes but has never been put back into operation since.

Pressing force max. blankholder and drawing ram together	5.150	KN
Pressing force drawing ram	3.150	KN
Retract force	3.100	KN
Ram stroke	1.400	mm
Blankholder force	2.000	KN
Blankholder stroke	900	mm
Rapid lowering speed of drawing ram and blankholder	500	mm/s
Drawing speed	95 - 28	mm/s
Retract speed	487	mm/s
Driving power drawing ram	110	kW
Driving power blankholder	7,5	kW
Driving power pilot pump	5,5	kW
Installation height without intermediate table	2250	mm
Installation height with intermediate table	1200	mm
Table surface WxD	1000x1200mm	
Blankholder WxD	1200x1200mm	
Blankholder hole diameter	825	mm
Die cushion hole diameter	50 H7	mm
Table height below floor	200	mm
Machine below floor	1.530	mm
Total height above floor	7.150	mm
Total width approx.	2.800	mm
Total depth approx.	3.000	mm
Weight without oil and accessories approx.	55.000	kg

Connection loads

Total connection load	130	KW
-----------------------	-----	----



Supply line	4x150	qmm
Back-up fuse	250	A

Drawing ram

Pressing force	3.150	KN
Stroke	1.400	mm
Rapid speed	500	mm/sec
Drawing speed	95 - 28	mm/sec
Retract speed	487	mm/sec

Blankholder

Pressing force(4 x 500 KN)	2.000	KN
Stroke	900	mm
Rapid speed	500	mm/sec
Retract speed	487	mm/sec

Ejector

Pressing force	250	KN
Stroke	700	mm
max. speed forward	400	mm/sec
max. speed backward	400	mm/sec

Driving power

Drawing ram & blankholder	110	KW
Haltedruck Blechhalter	7,5	KW
Pilot pressure	5,5	KW
Connection load	130	KW
Back-up fuse	315	Amp
Supply lines	4 x 185	mm²

Display controller	
System - Siemens	CNC 1000

Lacquer finish

Green acc. to RAL 6011

Static total weight approx.	55.000	kp
-----------------------------	--------	----



Technical Data:

Technical Data:

Control: SIEMENS

Dimensions and Weight:

Weight: 55.000 kg

Buyer Information:

Condition: Very good condition

Available: Immediately

Sold as:

EXW (Ex Works - Incoterm)

VAT: 19 %

Location: Germany



Asset-Trade

Assessment & Sale of Used Assets

Images:





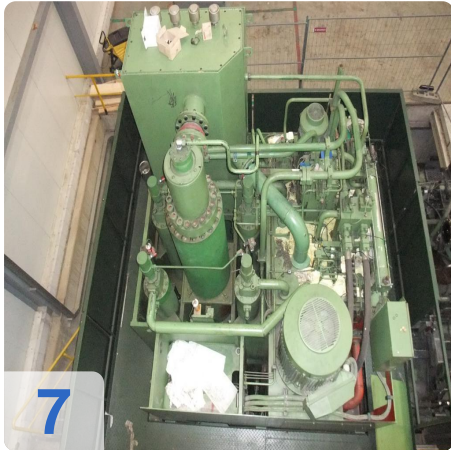
As

e

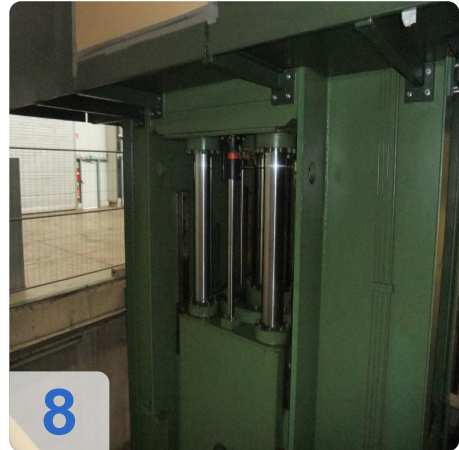
ssets



6



7



8



9



10



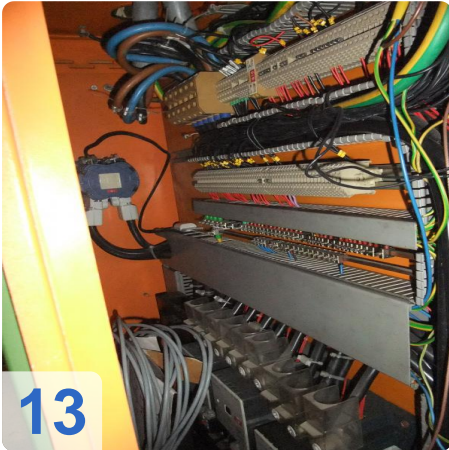
11



As

e

assets





Asset-Trade

e

Assets





Asset-Trade

Assessment & Sale of Used Assets

QR Code for <https://www.asset-trade.de/en/print/pdf/node/1222>

Asset-Trade

**Assessment and Sale of Used Assets world
wide**

Am Sonnenhof 16

47800 Krefeld

Germany

Tel.: +49 2151 32500 33