



Asset-Trade

Assessment & Sale of Used Assets

Ref. No.: 738-08222132



Overview and Technical Data:

MAKINO - J66 HMC

MAKINO



Year of Build: Jan 2001



Description:

Used MAKINO J66 Horizontal Machining Centre

3x Machines available!! (2x functional, 1x with missing controller cards)

Technical data

CNC Control : MAKINO Professional 3 / FANUC 16i

- Travel X 560 mm
- Travel Y 560 mm
- Travel Z 500 mm
- Spindle Speed 50 - 16000 min⁻¹
- Rapid Traverse 50000 mm/min
- Pallet Working Area X 400 mm
- Pallet Working Area Y 400 mm
- Max Pallet Size 400 kg
- Tool Storage Capacity 32 or 45 (optional)
- Tool Change Time 1.30 sec

Designed for high-volume production lines, Makinos J66 provides flexible high-speed machining. Different parts can be machined easily by selecting a different toolpath program in the NC controller. The J66s easy-to-use graphic interface simplifies programming of tool paths for different parts and separate applications. The J66s advanced design places the x, y and z axes all behind the spindle, so it can move to meet the workpiece, making it ideal for use in FTLs. Simple four-point leveling makes for quick installation and fast relocation for better asset utilization.



Technical Data:

Technical Data:

Control: Series 16i
Spindle Speed: 16.000 rpm
Tool Capacity: 32 x

Dimensions and Weight:

Height: 3.200 mm
Width: 2.000 mm
Length: 4.500 mm
Weight: 15.000 kg

Travels:

X-Axis: 560 mm
Y-Axis: 560mm
Z-Axis: 500 mm

Buyer Information:

Condition: Very good condition
Availability: Sold
Sold as:
EXW (Ex Works - Incoterm)
VAT: 19 %
Location: Germany



Asset-Trade

Assessment & Sale of Used Assets

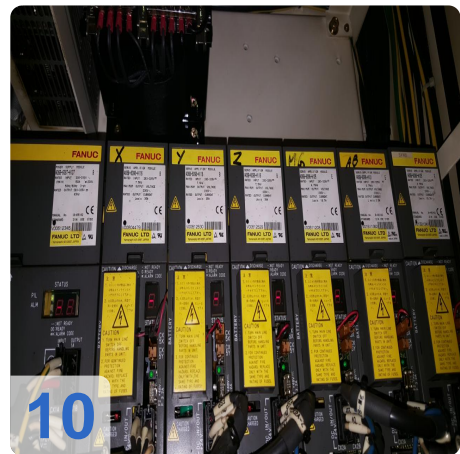
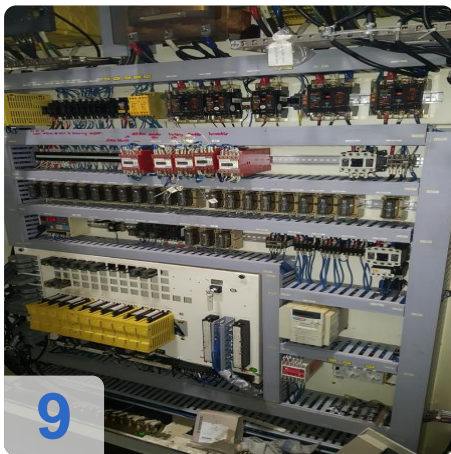
Images:





Assets

Assets



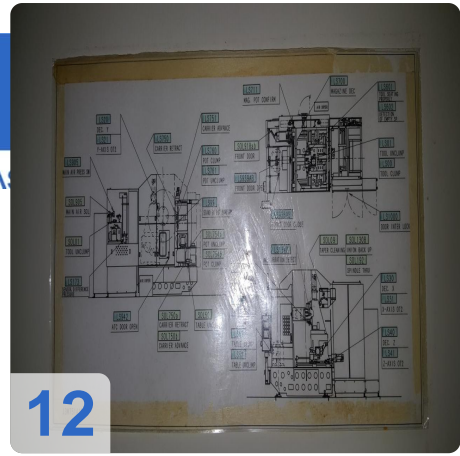


As

e

assets

12





Asset-Trade

Assessment & Sale of Used Assets

QR Code for <https://www.asset-trade.de/en/print/pdf/node/2141>

Asset-Trade

**Assessment and Sale of Used Assets world
wide**

Am Sonnenhof 16

47800 Krefeld

Germany

Tel.: +49 2151 32500 33