



Asset-Trade

Assessment & Sale of Used Assets

Ref. No.: 1411-03081227

Overview and Technical Data:

**DEMAG D1250 Injection moulding machinery
1250tons for sale**

DEMAG



Year of Build: Jan 1983



Description:

Used DEMAG D1250 injection moulding machine for sale

Control Siemens S5 115U

Technical data:

- Clamping group:
 - Clamping force: 1.250 tons
 - Tie bar span distance: 1.200 x 1.200 mm
 - Mould-holders plates dimensions: 1.750 x 1.750 mm
 - Mould thickness min. / max.: 1.150 mm. – 600 mm
 - Max. opening travel: 1.750 mm
 - Fixed side centering: 250 mm
 - Movable centering: 250 mm
- Injection group:
 - Screw diam.: 130 mm
 - Injection pressure: 1.400 bar
 - Injection volume (calculated): 6.505 cm³
- Overall dimensions: 13,2 x 3,1 x 3,5m
- Weights:
 - Clamping unit: 43 tons
 - injection unit: 15tons
 - Total: 58 tons
- Comments:
 - Still under Power and fully functional

Looking for a fully functional injection molding machine with handling? Look no further than our DEMAG model D1250. This large injection molding machine boasts an impressive 1250 tons shooting force, making it a powerhouse for all your molding needs.

Constructed in 1983, this machine features Siemens S5 115U control, ensuring precision and accuracy in every molding cycle. The included removal injection unit comes with a fence and belt, while the handling from Sepro provides seamless integration with your existing production line.



At 13.2 x 3.1 x 3.5 in dimensions, this machine is a true giant in the injection molding world. But don't let its size fool you - it's also incredibly agile, with a total weight of just 58t. Of that weight, the clamping unit accounts for 43t and the injection unit for 15t.

We understand that purchasing and installing a large injection molding machine can be a daunting task, which is why we offer assistance with dismantling and loading. Trust us to handle the logistics, so you can focus on getting your DEMAG model D1250 up and running.

Don't settle for anything less than the best when it comes to injection molding machines. With our DEMAG model D1250, you'll be able to tackle even the most complex molding jobs with ease. Contact us today to learn more about this powerful machine and how it can benefit your business.

Not only is this DEMAG model D1250 ideal for a wide range of injection molding applications, including automotive components such as large cockpits and door panels, but it's also a perfect fit for second life applications.

Thanks to its high shooting force and precision control, this machine is capable of producing large plastic products with ease. And with our assistance in dismantling and loading, you can repurpose this machine to create similar-sized plastic products for a variety of industries.

So if you're looking for a versatile and reliable injection molding machine that can handle even the most demanding applications, look no further than our DEMAG model D1250. Contact us today to learn more about how this machine can benefit your business.



Technical Data:

Technical Data:

Control: SIEMENS

Buyer Information:

Condition: Normal wear

Available: Sold

Sold as:

EXW (Ex Works - Incoterm)

VAT: 19 %

Buyers Premium: 18 %

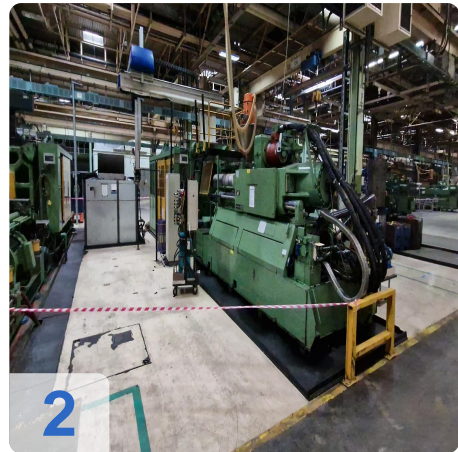
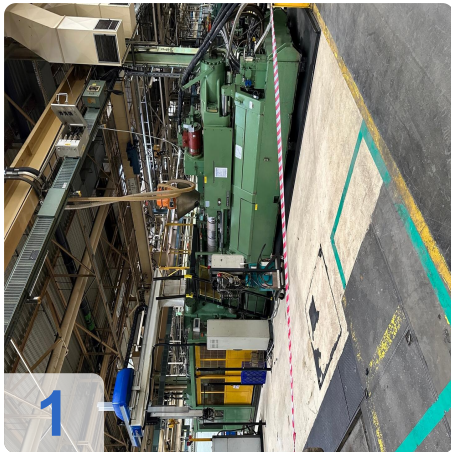
Location: Germany



Asset-Trade

Assessment & Sale of Used Assets

Images:

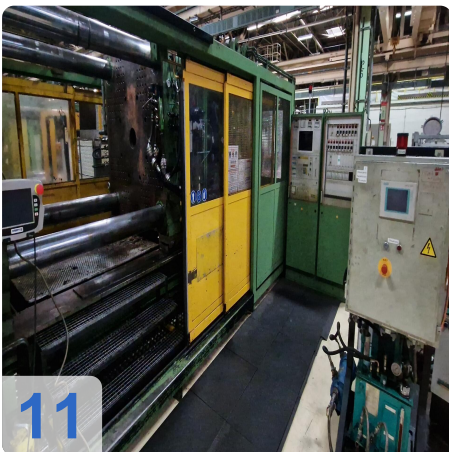
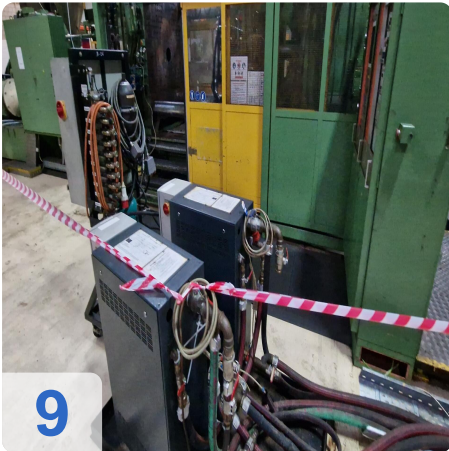
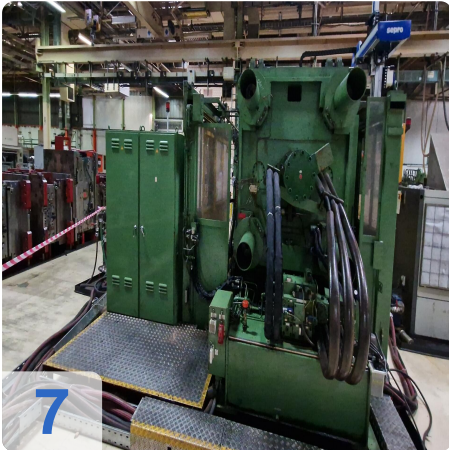
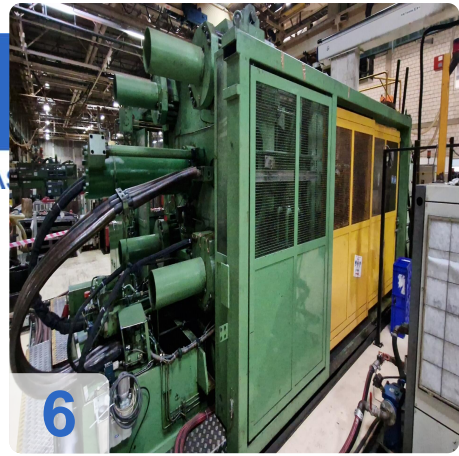




A

e

Assets

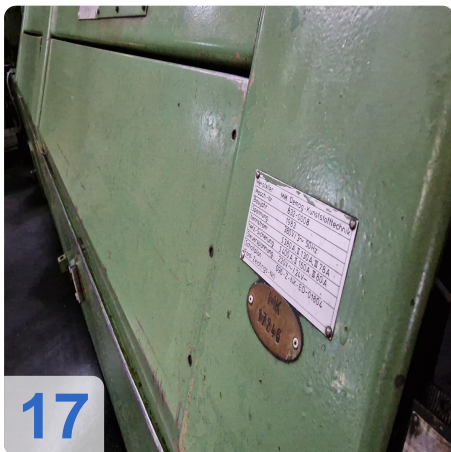
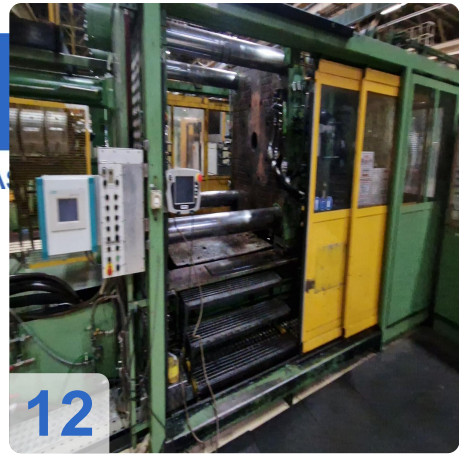




Asset-Trade

e

Assets





As

e

ssets

18





Asset-Trade

Assessment & Sale of Used Assets

Video:





Asset-Trade

Assessment & Sale of Used Assets

QR Code for <https://www.asset-trade.de/en/print/pdf/node/7374>

Asset-Trade

**Assessment and Sale of Used Assets world
wide**

Am Sonnenhof 16

47800 Krefeld

Germany

Tel.: +49 2151 32500 33