



# Asset-Trade

Assessment & Sale of Used Assets

Ref. No.: 1447-11141134

## Overview and Technical Data:

**DÖRRIES SCHARMANN Solon 3 with 7  
Pallettes**

**DÖRRIES SCHARMANN**



**DST**

Dörries  
Droop + Rein  
Scharmann  
Berthiez  
Mecof

Year of Build: Sep 1990

Rebuild year: Jan 2007



## Description:

### Used DÖRRIES SCHARMANN Solon 3 - CNC-Bearbeitungszentrum mit 7 Paletten

2007 completely modernized to Siemens 840D control system

**Technical data Solon 3 machining center :**

- Travel paths:

X-axis from 800 to +800 = 1600 mm

Y-axis from +50 to +1050 = 1000 mm

Z axis from +250 to +1290 = 1000 mm

Rapid traverse: 25m/min

Number of tools: 110

Automatic pallet changing system

Tool equipment:

Number of tools: 110xTool changes possible while the machine is running

Tool Management System (TIS) =Automatic

Tool changing system

Tool change time 8 seconds

Length/breakage control - Renishaw measuring probe for all types of measuring programs possible

Spindle with 3 gear levels:

Gear 1: 0 - 532rpm



Gear 2: 532 - 1600rpm

Gear 3: 1603 - 4500rpm

Spindle power: 37kW

Spindle mount: SK50 taper

Efficiency 95%

Cooling water pressure through the spindle: 30 bar

## **Technische Daten HBC:**

Steuerungsversion: 850 M

Table Pallets :

- Number of pallets: 7 - STS. Linear Pallet Transfer System
- Table dimensions: 1,000 mm x 800 mm
- Equipped with 7 T-slots 18 x 30 mm deep 30 mm
- Max. workpiece weight on the table: 2500 kg
- Rotary table in the machine
- Maximum width of :
- The product is 1600 mm (because of the spray nozzles in the machine) and 1075
- and 1075 from front to back
- Front max. 150 mm above the table
- Rear 125 mm above the table (due to the large door)
- Front max. 190 mm above the table, but then the large door must be open when loading and unloading, otherwise the door will hit the product when unloading and the product will go through the windows when in the station.



- Max. height Max. height of product Max. height of product that can enter the machine through the large door = 1300 mm (measured from the table) Oil tanks outside the machine, so that they can be filled without interruption Fixed loading station, so that we do not have to carry clamping devices back and forth Enclosed machining cabin, due to smoke and flying cooling water Tool magazine change during machine rotation

Tools can be purchased separately!!!

Machine can be inspected under power.

---

The DÖRRIES SCHARMANN Solon 3 machining centre is a high-performance machining centre that can process large and complex products with precision and efficiency. It has a Siemens 840D control system and a rotary table with seven 1000 x 800 mm tables. The machine has three traversing axes: X-axis of 1600 mm, Y-axis of 1000 mm and Z-axis of 1000 mm. The machine can reach a maximum spindle speed of 4500 rpm and a cooling water pressure of 30 bar. The machine has a tool magazine with 110 tools and a Renishaw probe for length and breakage control. The machine also has oil tanks outside the machine, a fixed loading station and an enclosed machining cabin. The DÖRRIES SCHARMANN Solon 3 machining centre is ideal for machining long products with high accuracy and quality. The 7-pallet station is one of the features that make the DÖRRIES SCHARMANN Solon 3 machining centre an excellent machining centre for large and complex products. The machine can switch between different pallets without interrupting the machining process, which reduces non-productive time and increases productivity.





## Technical Data:

### Technical Data:

Control: SINUMERIK 840D  
Spindle Speed: 4.500 rpm  
Tool Holder: SK50  
Tool Capacity: 110 x

### Travels:

X-Axis: 1.600 mm  
Y-Axis: 1.000mm  
Z-Axis: 1.000 mm

### Dimensions and Weight:

Height: 4.800 mm  
Width: 4.800 mm  
Length: 8.500 mm  
Weight: 6.500 kg

### Buyer Information:

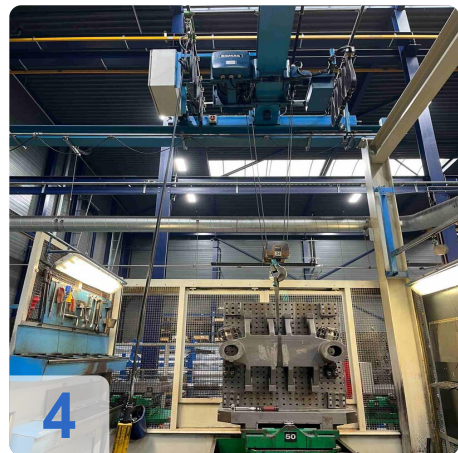
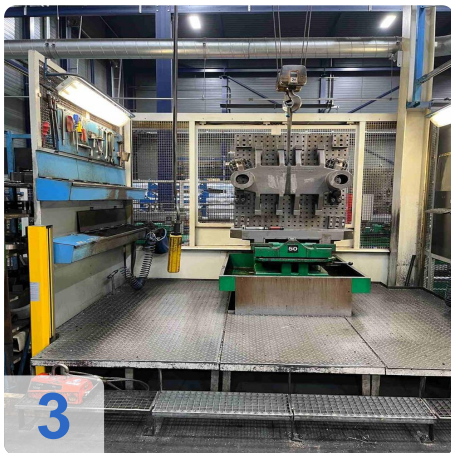
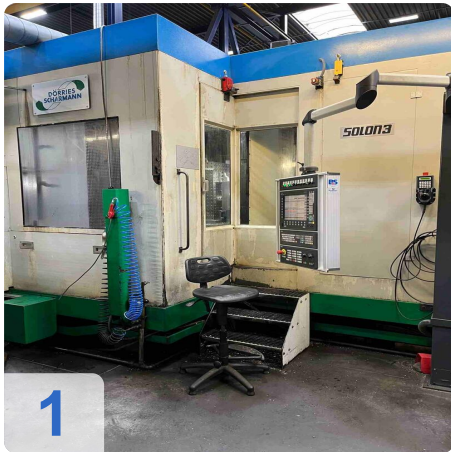
Condition: Very good condition  
Availability: Immediately  
Sold as:  
EXW (Ex Works - Incoterm)  
VAT: 21 %  
Buyers Premium: 18 %  
Location: Netherlands



# Asset-Trade

Assessment & Sale of Used Assets

## Images:

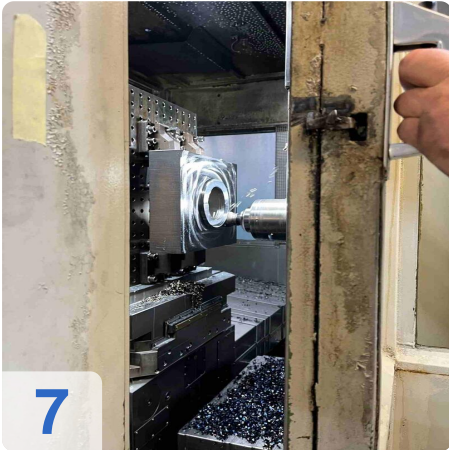
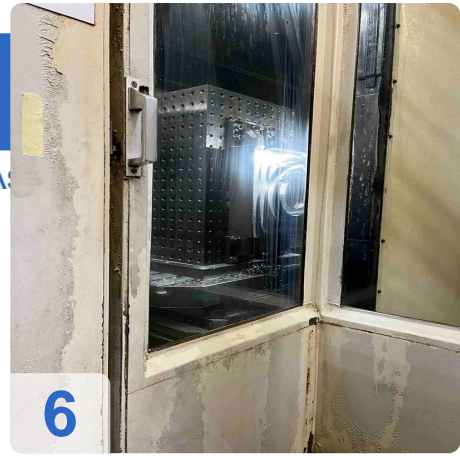




As

e

assets







As

e

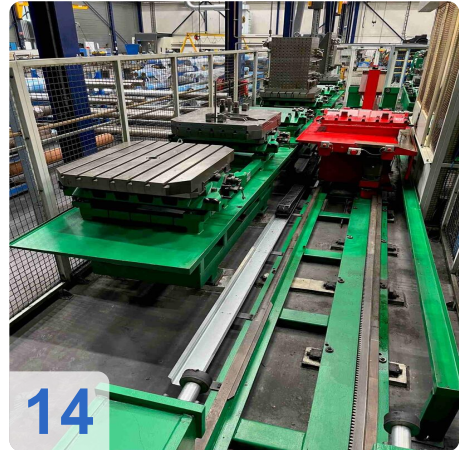
Assets



12



13



14



15



16

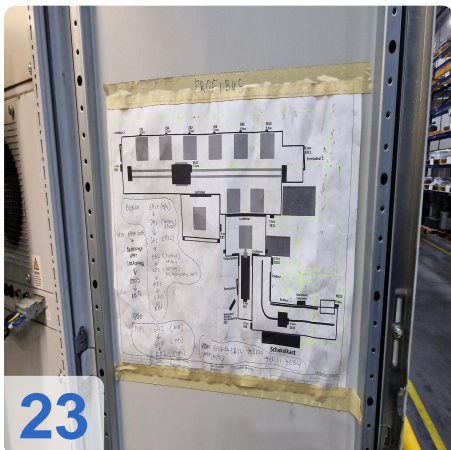
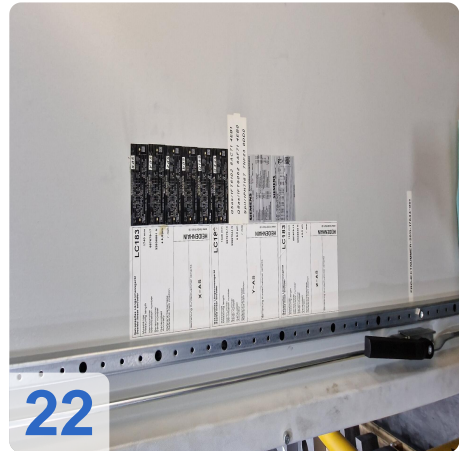


17



Assets

Assets



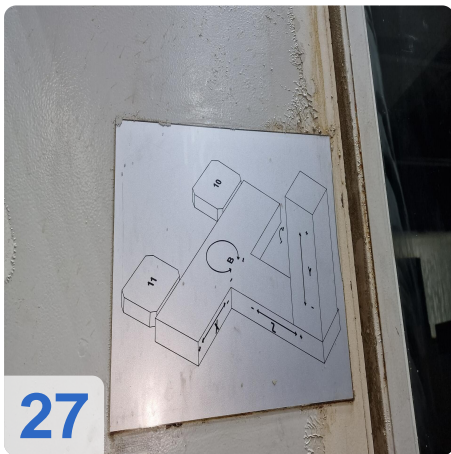
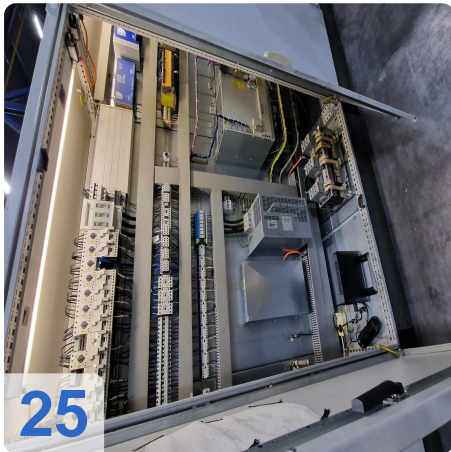
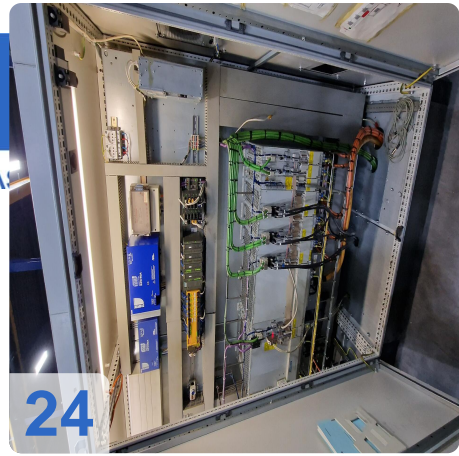




As

e

ssets

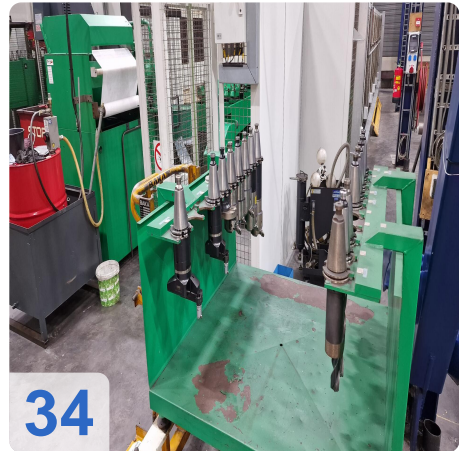
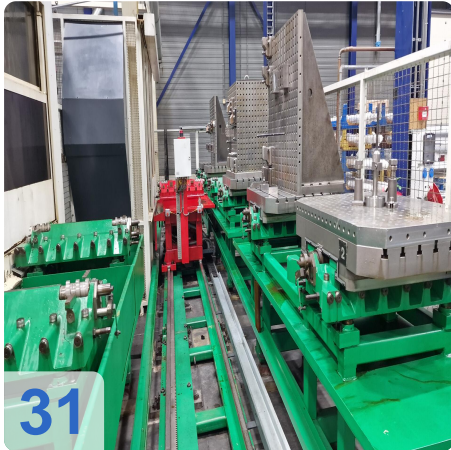




As

e

assets



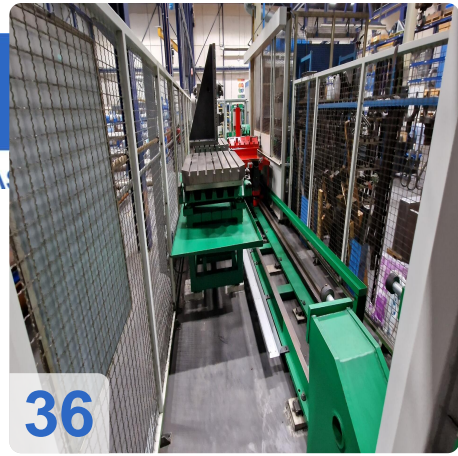




As

e

ssets





# Asset-Trade

Assessment & Sale of Used Assets

QR Code for <https://www.asset-trade.de/en/print/pdf/node/7763>

**Asset-Trade**

**Assessment and Sale of Used Assets world  
wide**

**Am Sonnenhof 16**

**47800 Krefeld**

**Germany**

**Tel.: +49 2151 32500 33**