



Asset-Trade

Assessment & Sale of Used Assets

Ref. No.: 1505-02061520

Overview and Technical Data:

Used SALVAGNINI S4.40 punching machine
with shearing unit

SALVAGNINI

salvagnini

Year of Build: Jan 1998



Description:

Used SALVAGNINI S4.40 punching machine with shearing unit

- CNC control: Salvagnini SysCon

Technical data:

- Working area: 4064x 1803 mm
- Max dimensions of the sheet: 4064x 1803 mm
- Min dimensions of the sheet: 370x 300 mm
- Min and max sheet thickness: 0.5 -5 depending on the material used
- Maximum weight of the sheet: no limit
- Grippers for automatic positioning of the sheet: 13x
- Technology: Multi-press punching head with hydraulic drive
- Time for changing the punching tools: 0 sec (each tool is ready for operation)
- Simulation activation possibility of two or more punching tools
- Weight : 19000 kg
- Machine dimensions: 9967x6426 mm
- Power 63kW
- Air supply: 5 bar

Punching productivity & cutting productivity

- Maximum material thickness:
 - Aluminium with breaking strength 200M/mm²: 5.0 mm
 - Steel with breaking strength 410N/mm²: 3.5 mm
 - Stainless steel with breaking strength 680 N/mm²: 2.0 mm
 - Minimum material thickness 0.5 mm
- Maximum punching frequency
 - Centre distance 1mm: 1200 blows per minute
 - Centre distance 5mm: 650 blows per minute
 - Centre distance 25mm: 450 punches per minute
 - Centre distance 250mm: 200 punches per minute
 - Centre distance 1000mm: 65 strokes per minute
- Dynamics:
 - Max speed of axis X : 84 m/min
 - Max speed of axis Y : 72 m/min



- Simultaneous axis displacement speed: 110.6 m/min
- Max acceleration of axis X : 21.2 m/s²
- Max acceleration of the Y axis : 12.5 m/s²

Scissors: Technology simultaneous or independent cutting along X and Y with automatic regulation of the blade clearance

Highlights SALVAGNINI S4.40 Punching:

Precise and productive: The S4.40 is a state-of-the-art punching machine with shearing unit designed for precise and efficient sheet metal processing.

Versatile: With a working area of 4064 x 1803 mm and the ability to process materials with a thickness of 0.5 to 5 mm, the S4.40 is suitable for a wide range of applications.

Fast and reliable: The machine has a multi-press punching head with hydraulic drive, which ensures fast tool changes and high punching frequencies.

Automated: The S4.40 is equipped with 13 grippers for automatic positioning of the sheet, which simplifies operation and increases productivity.

Maintenance-friendly: The machine has a self-monitoring function and a remote maintenance option, which ensure high availability and low maintenance costs.

The SALVAGNINI S4.40 punching machine with shearing unit is a state-of-the-art machine equipped with a variety of innovative technologies.

Multi-press punching head with hydraulic drive:

The punching head has several punches that can be used simultaneously or independently of each other. This enables a high punching frequency and a short processing time. The hydraulic drive ensures precise and powerful punching.

Automatic tool change:

The machine has an automatic tool changing system that minimises set-up time. Up to 30 tools can be stored in the tool magazine. Tools can be changed in a matter of seconds.

Integrated angle shears:

The machine has an integrated angle shear that can be used to cut sheet metal at different angles.

The angle shears are equipped with an automatic blade adjustment system that optimises cutting accuracy.

Salvagnini SysCon CNC control system:

- The machine is controlled using the Salvagnini SysCon CNC control.



- The control is easy to use and offers a wide range of functions that make the machine easier to operate.
- The control has a graphical user interface that enables visualisation of the machining process.

The SALVAGNINI S4.40 punching machine with shearing unit offers a number of advantages, including

- **Precision:** the machine is capable of producing precise and burr-free sheet metal parts.
- **Productivity:** The machine is very productive and can process a high number of sheet metal parts in a short time.
- **Versatility:** The machine can be used for a wide range of applications.
- **Flexibility:** The machine can be customised to the customer's specific needs.
- **Ease of maintenance:** The machine is easy to maintain and has a long service life.

The SALVAGNINI S4.40 punching machine with shearing unit can be used in a wide range of applications, including

- **Automotive industry:** The machine is used to produce car body parts and other automotive components.
- **Aerospace industry:** The machine is used to manufacture aircraft parts and other aerospace components.
- **Electronics industry:** The machine is used to manufacture electronic housings and other electronic components.
- **Mechanical engineering:** The machine is used to manufacture machine parts and other industrial components.
- **Metalworking:** The machine is used to manufacture sheet metal parts for a variety of applications.



Technical Data:

Technical Data:

Control: CNC

Dimensions and Weight:

Length: 9.967 mm

Width: 6.426 mm

Weight: 19.000 kg

Buyer Information:

Condition: Very good condition

Available: Immediately

Sold as:

EXW (Ex Works - Incoterm)

VAT: 19 %

Buyers Premium: 18 %

Location: Germany



Asset-Trade

Assessment & Sale of Used Assets

Images:

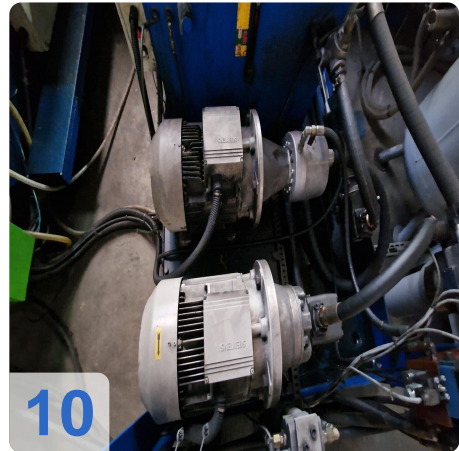
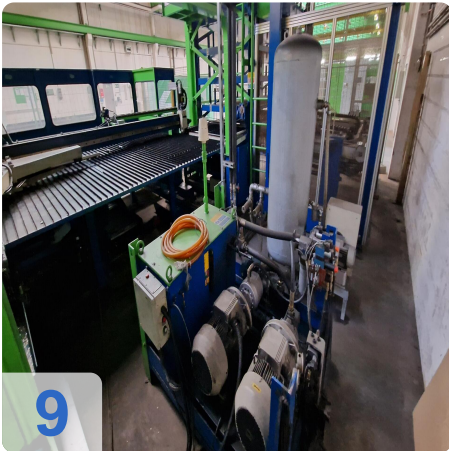
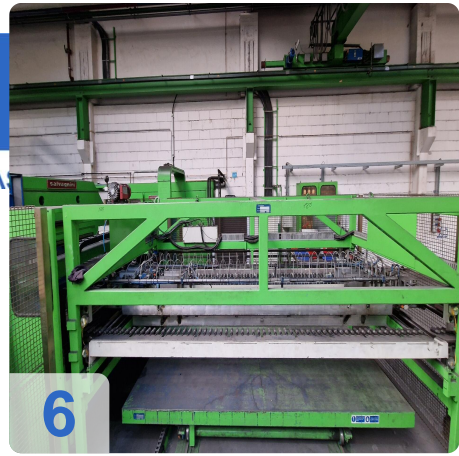




Asset-Trade

e

Assets





As

e

ssets

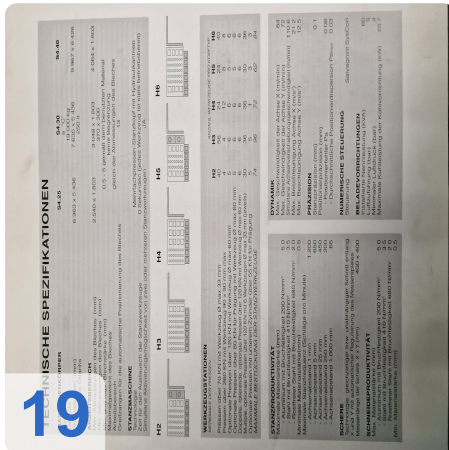
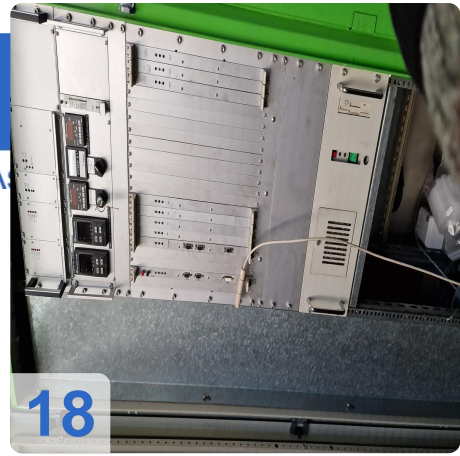




AS

e

Assets





Asset-Trade

Assessment & Sale of Used Assets

QR Code for <https://www.asset-trade.de/en/print/pdf/node/7782>

Asset-Trade

**Assessment and Sale of Used Assets world
wide**

Am Sonnenhof 16

47800 Krefeld

Germany

Tel.: +49 2151 32500 33