

Image not found or type unknown



Ref. No.:
232-08101437

Overview and Technical Data:

SEUTHE - RS 90 / 4,8 -120 Complete Pipe making machine 38 - 88,9 mm @120m/min

SEUTHE

SEUTHE
asmag group

Year of Build:
Jan 1980
Rebuild year:
Jan 1998

Description:

VAI SEUTHE Complete pipe processing line for tubes from 38.0 to 88.9 mm at 120 m/Min

Total length ca.80m see PDF Floor plan

- modernized in 1998
- Control Siemens Simatic S 5 1-35
- Manufacturing Product:
 - Profile tubes - same size and square tubes produced by conversion of round tubes
 - Round tubes from 38.0 to 88.9 mm
 - square tubes
 - Min 30 x 30 mm
 - Max 70 x 70 mm
 - rectangular tubes
 - Min 40 x 20 mm
 - Max 110 x 30 mm
- System parameters:
 - Max line speed 120 m / min (infinitely variable)
 - Direction from right to left

- from break-down structure to the welding table - lower edge of tube - constant
- roll up starting from the welding table - pipe center - consistently
- material
 - bandwidth
 - Min 150 mm (120 mm)
 - Max 285 mm
- thickness
 - 1.5 mm min
 - Max 4.8 mm
- reference material (ST 52)
 - Min tensile strength Min 630 N / mm²
 - Yield min 365 N / mm² 4.8 mm max
- welding device HF make Emmedi build 1989
 - design transistor
 - welding capacity 350 kW
 - outside scrappers 2 pcs.

The plant produces more and can be visited by appointment.

Please contact us for more detailed information the the 88.9mm x 4.8mm Pipe Production Plant.

Technical Data:

Technical Data:

Control:

[CNC](#)

Buyer Information:

Condition:

[Normal wear](#)

Available:

[Sold](#)

Sold as:

[EXW \(Ex Works - Incoterm\)](#)

VAT:

[19 %](#)

Buyers Premium:

[16 %](#)

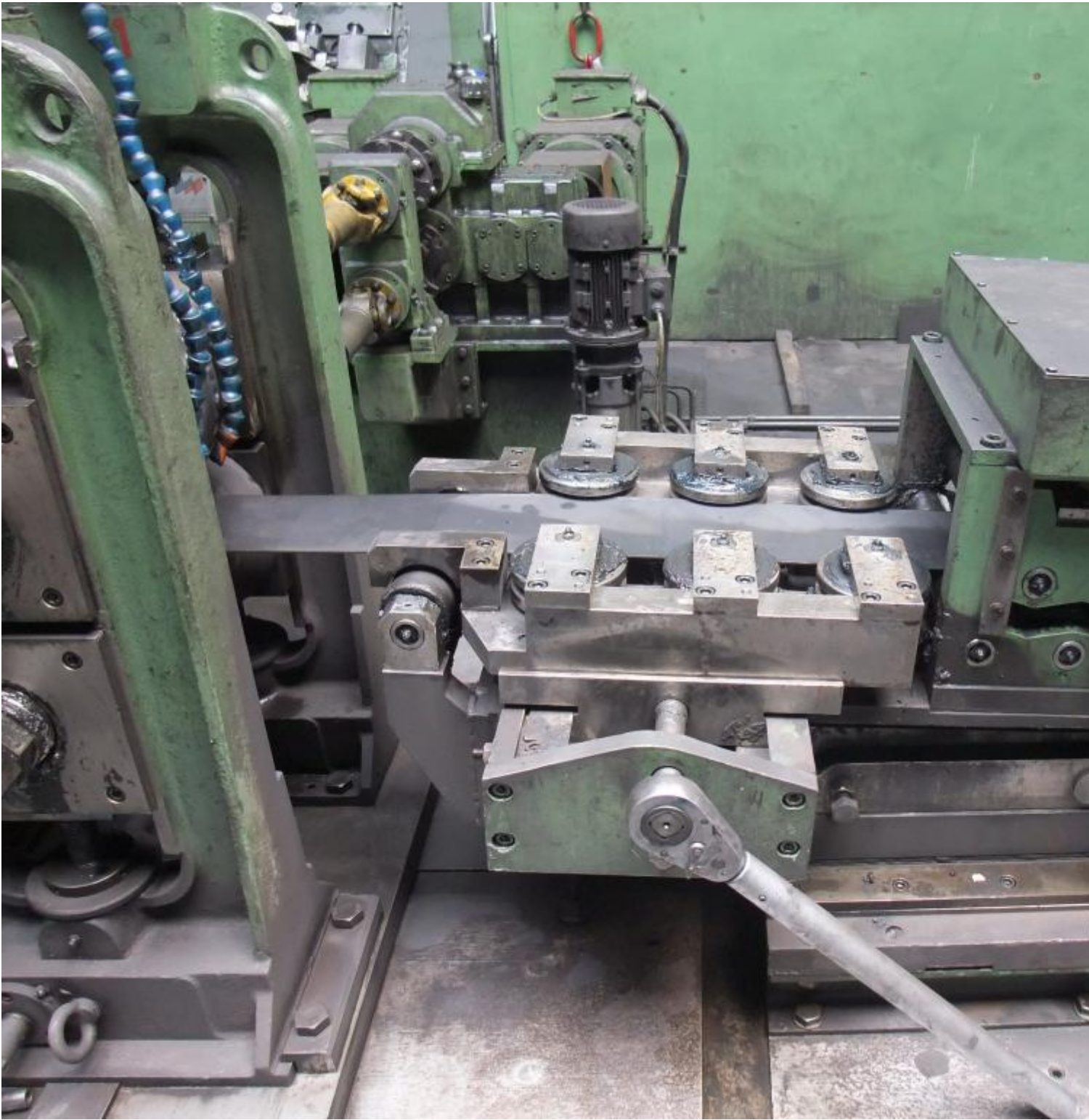
Location:

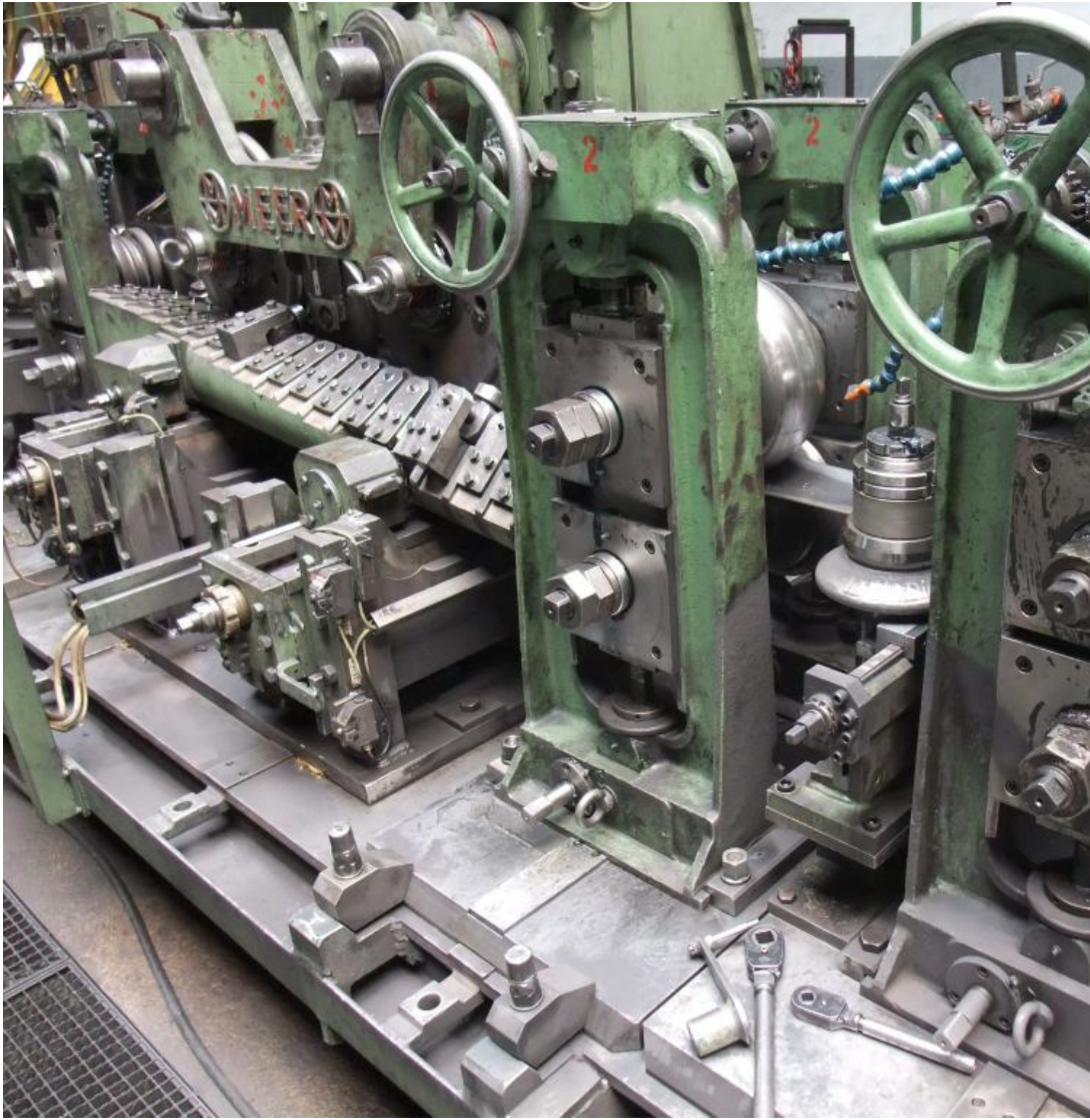
Germany

Images:



1





3







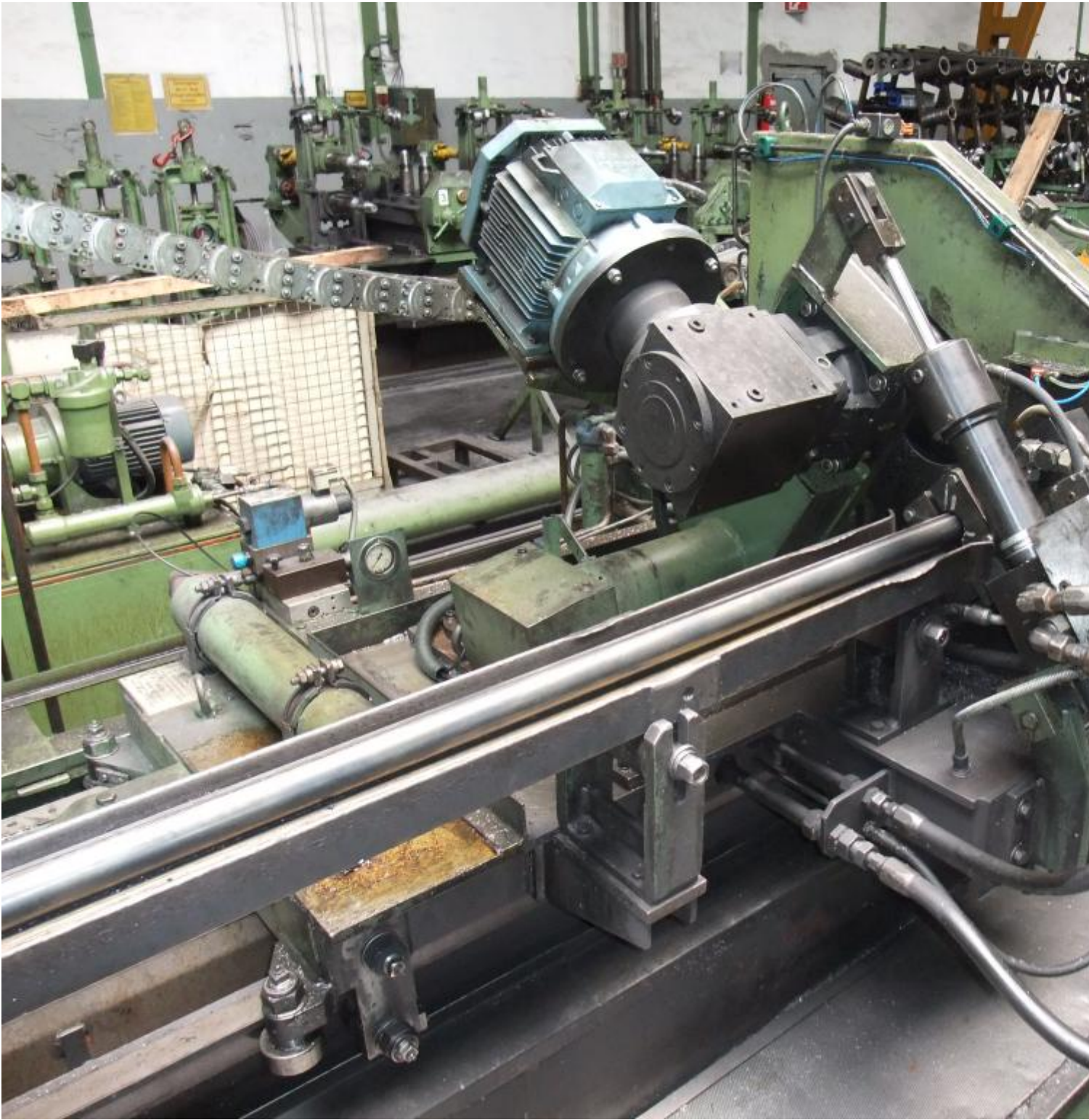


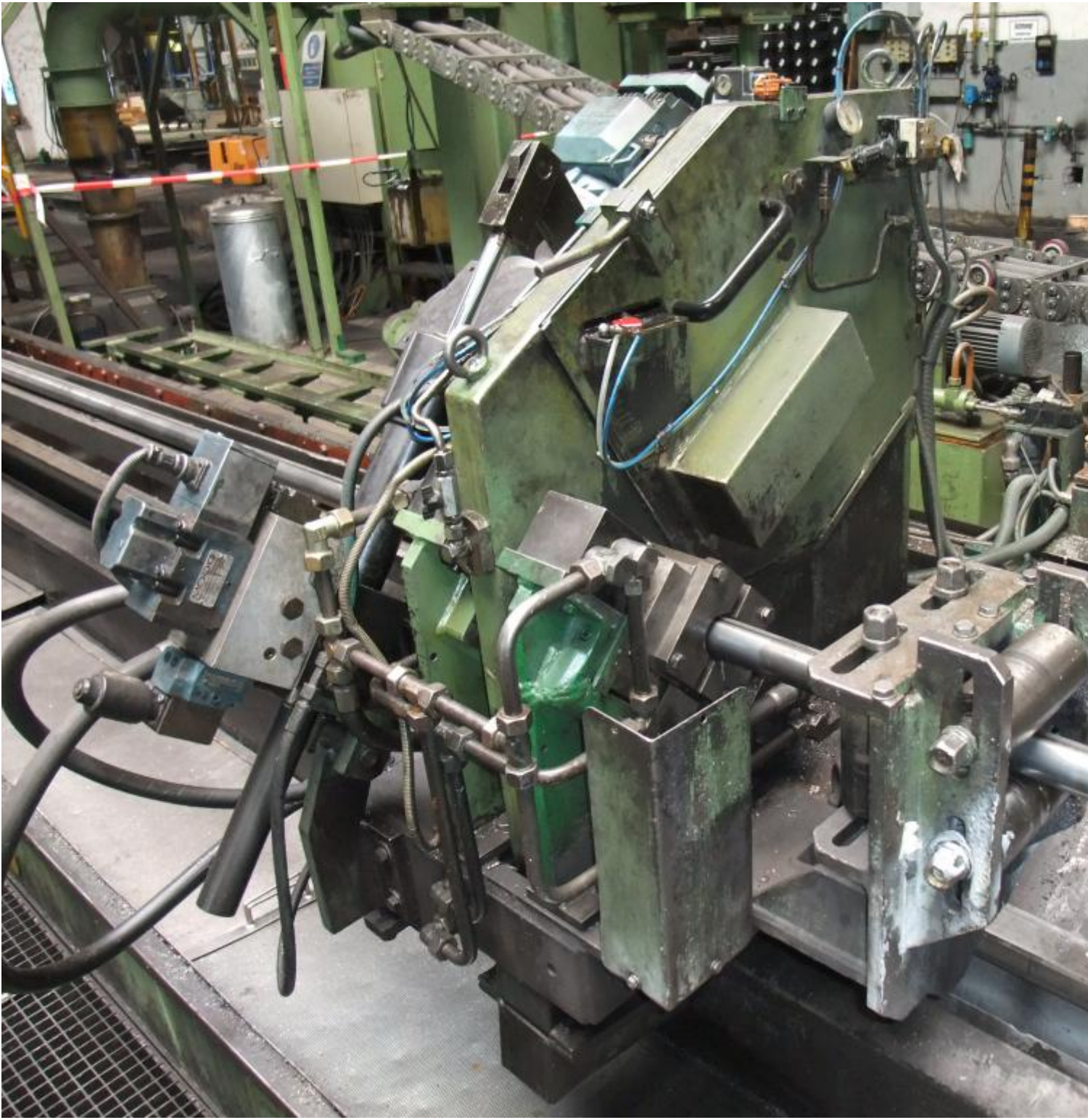
































Asset-Trade

Assessment and Sale of Used Assets world wide

Am Sonnenhof 16

47800 Krefeld

Germany

Tel.: +49 2151 32500 33

Fax.: +49 2151 65 29 22

Email: info@asset-trade.de

Web.: <https://www.asset-trade.de/en>

Ref. No.:
232-08101437

Overview and Technical Data:

SEUTHE - RS 90 / 4,8 -120 Complete Pipe making machine 38 - 88,9 mm @ 120m/min

SEUTHE

SEUTHE
asmag group

Year of Build:

Jan 1980

Rebuild year:

Jan 1998

Description:

VAI SEUTHE Complete pipe processing line for tubes from 38.0 to 88.9 mm at 120 m/Min

Total length ca.80m see PDF Floor plan

- modernized in 1998
- Control Siemens Simatic S 5 1-35
- Manufacturing Product:
 - Profile tubes - same size and square tubes produced by conversion of round tubes
 - Round tubes from 38.0 to 88.9 mm
 - square tubes
 - Min 30 x 30 mm
 - Max 70 x 70 mm
 - rectangular tubes
 - Min 40 x 20 mm
 - Max 110 x 30 mm
- System parameters:
 - Max line speed 120 m / min (infinitely variable)
 - Direction from right to left
 - from break-down structure to the welding table - lower edge of tube - constant
 - roll up starting from the welding table - pipe center - consistently
- material
 - bandwidth
 - Min 150 mm (120 mm)
 - Max 285 mm
- thickness
 - 1.5 mm min
 - Max 4.8 mm

- reference material (ST 52)
 - Min tensile strength Min 630 N / mm²
 - Yield min 365 N / mm² 4.8 mm max
- welding device HF make Emmedi build 1989
 - design transistor
 - welding capacity 350 kW
 - outside scrappers 2 pcs.

The plant produces more and can be visited by appointment.

Please contact us for more detailed information the the 88.9mm x 4.8mm Pipe Production Plant.

Technical Data:

Technical Data:

Control:

[CNC](#)

Buyer Information:

Condition:

[Normal wear](#)

Available:

[Sold](#)

Sold as:

[EXW \(Ex Works - Incoterm\)](#)

VAT:

[19 %](#)

Buyers Premium:

[16 %](#)

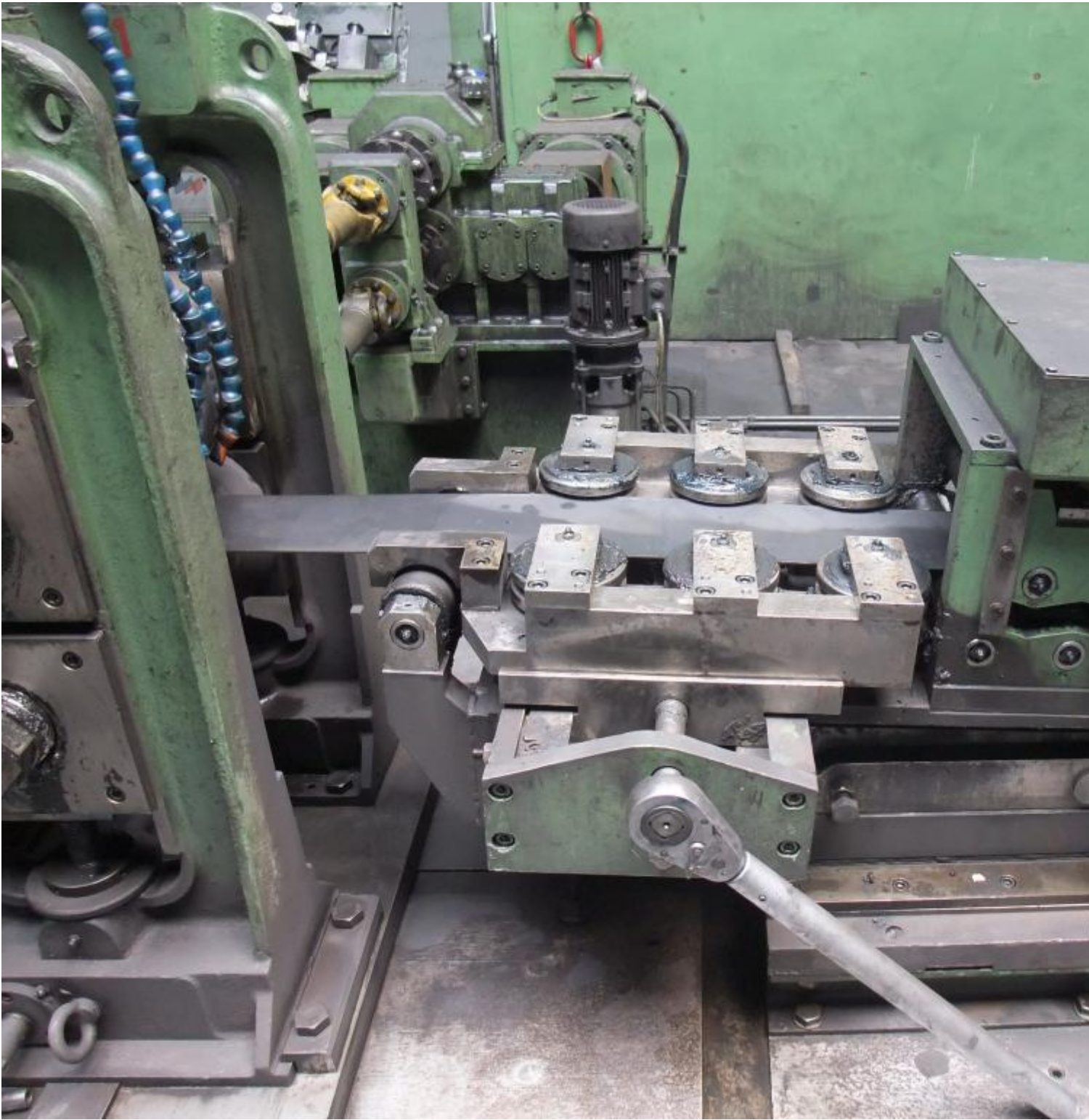
Location:

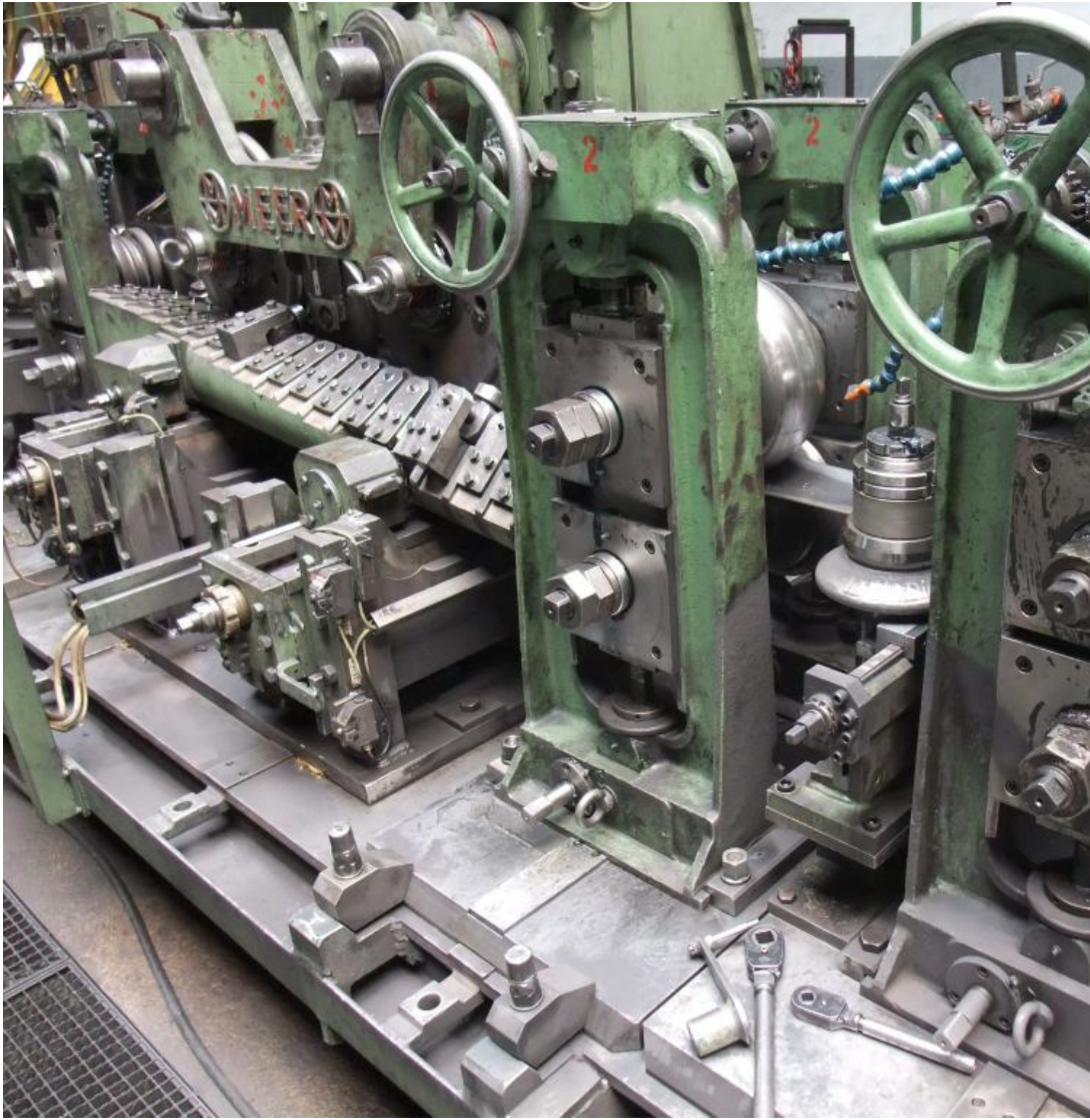
Germany

Images:



1





3





5



6

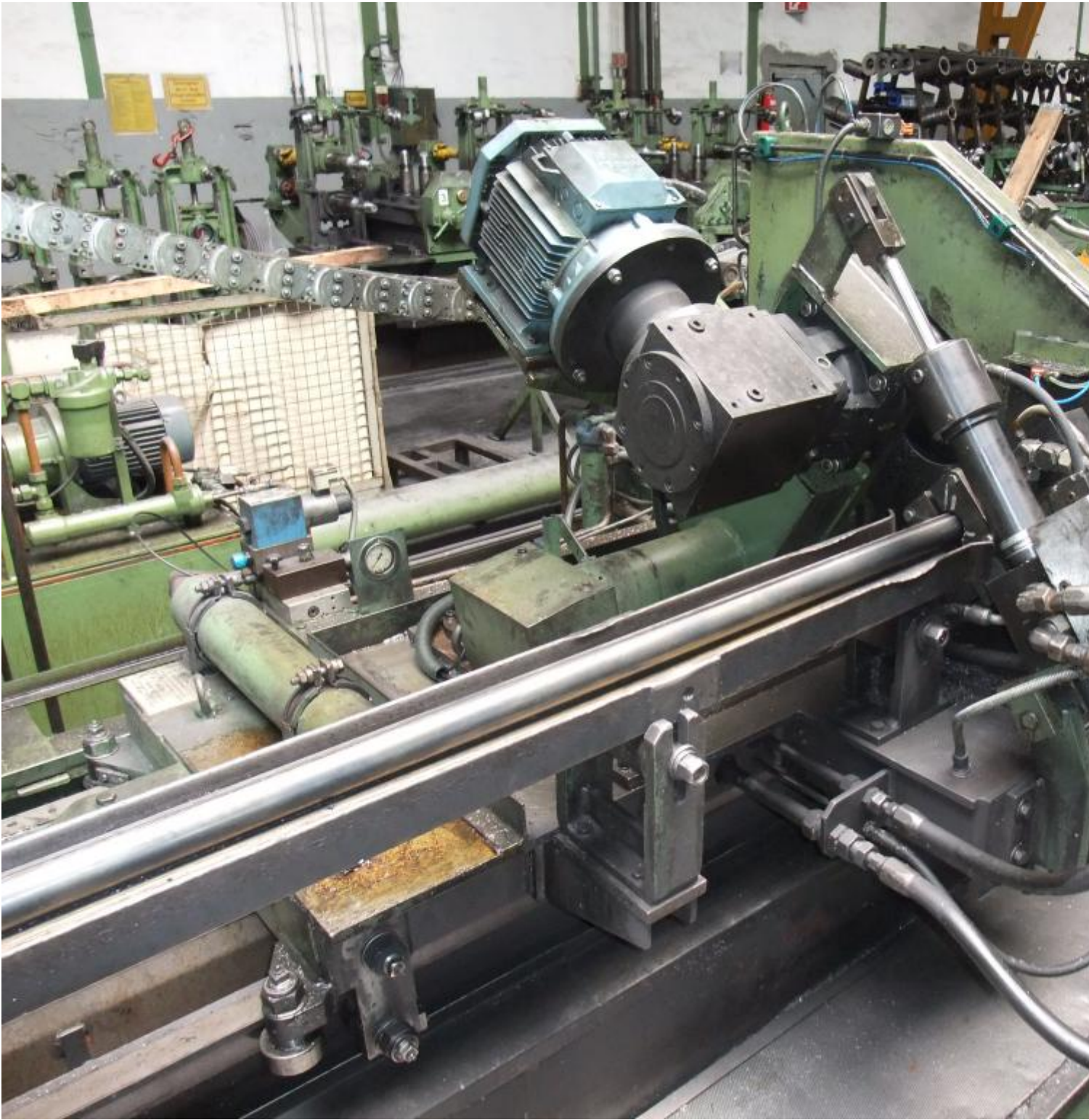


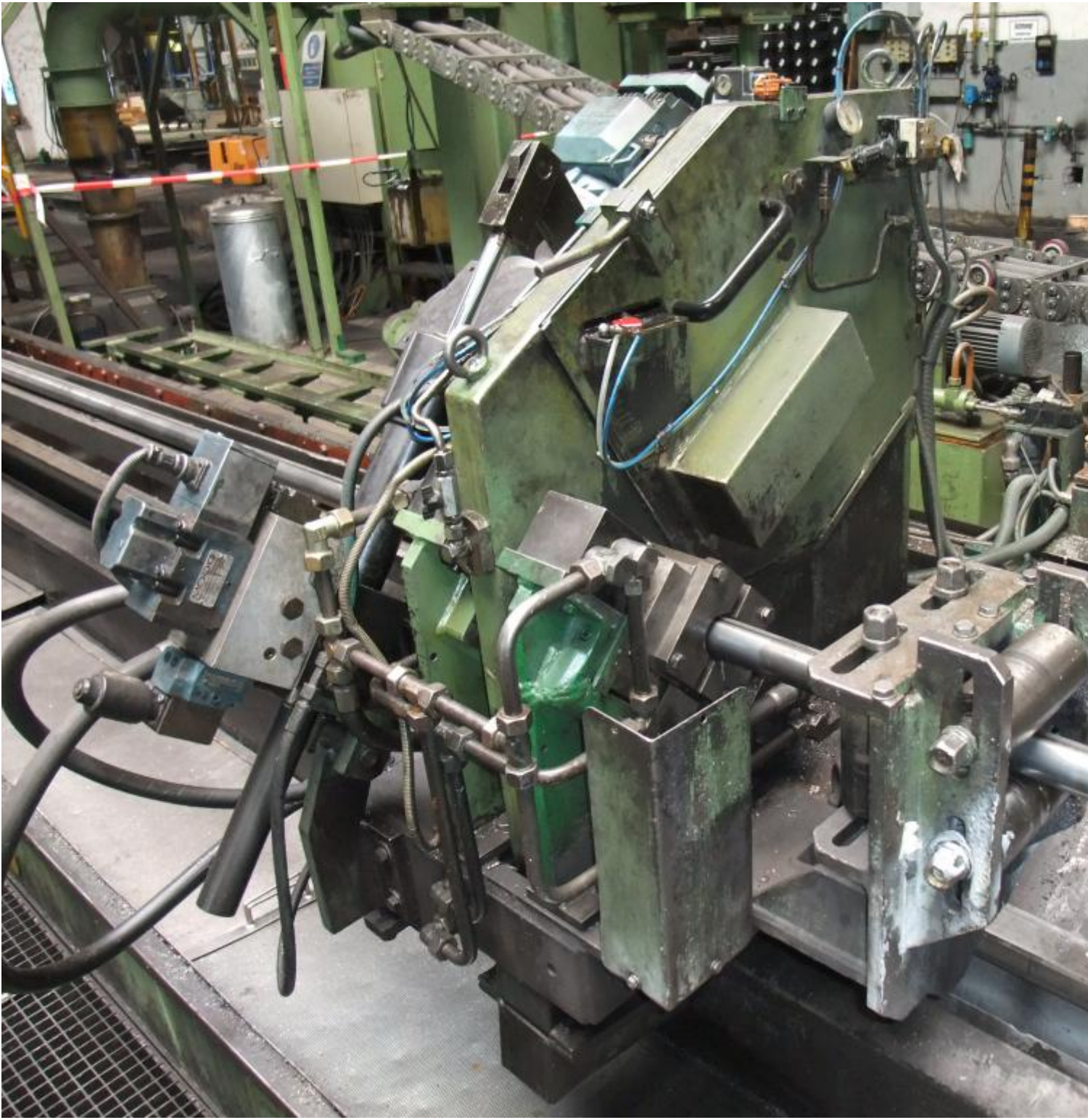
















The image shows a large technical drawing on a board, likely a drawing of a mechanical assembly. The drawing is a grid of dimensions and part numbers, with various callouts and arrows. The grid is organized into columns and rows, with dimensions and part numbers written in black ink. The drawing is mounted on a board with a green circle on the left side. The drawing is a detailed technical drawing of a mechanical assembly, showing various parts and their dimensions. The drawing is organized into columns and rows, with dimensions and part numbers written in black ink. The drawing is mounted on a board with a green circle on the left side. The drawing is a detailed technical drawing of a mechanical assembly, showing various parts and their dimensions. The drawing is organized into columns and rows, with dimensions and part numbers written in black ink. The drawing is mounted on a board with a green circle on the left side.

















Asset-Trade

Assessment and Sale of Used Assets world wide

Am Sonnenhof 16

47800 Krefeld

Germany

Tel.: +49 2151 32500 33

Fax.: +49 2151 65 29 22

Email: info@asset-trade.de

Web.: <https://www.asset-trade.de/en>

Generated on 26.03.2026

© Copyright 2026 - [Asset-Trade](#)

Page