

Image not found or type unknown



Ref. No.:

239-09301609

Overview and Technical Data:

IMA - Combima K II R75-5:1 1820 V R3 - Edge processing machine

[IMA](#)



Year of Build:

Jan 1995

Description:

Two IMA COMBIMA / K /II / R75 - 5:1 /1820 / V / R3 - Edge processing machine

Combima to format / profiling, for edge gluing and edge reworking of plate-shaped workpieces.

Technical data:

- Edge materials: plastic strips, in rolls
- min. Length of strip material in roll = 300 mm
- min. Length of strip material in roll = 14 mm
- Strip thickness for roll materials = 0.4 - 3 mm
- Damping profile = approximately 1.9 mm
- min. Workpiece length = 200mm
- min. Workpiece thickness = 8 mm
- max. Workpiece thickness = 45 mm
- min. Workpiece overhang from the chain conveyor, each side = 45 mm
- one. Workpiece overhang from the chain conveyor, each side = 85 mm
- min. Passage width at 45 mm Workpiece overhang on the edit page and - 15 mm on the opposite page without editing
 - Processing along with counter-mounted support rollers, lifting rails and flat-belt drive chain between the tracks about 235 mm =
 - Longitudinal working with movable counter-pressure rolls on - 50 mm = 200 mm short pieces in place with a cam.
 - Profiling = 230 mm
 - Profiling: only applicable for short parts of a machine with cams cam feed = 320 mm
- max. Working width 2600 mm
- Cam 540/450 mm spacing
- Air conditioner, cooling capacity 1000 W
- IMATRONIC-control computer

For more details request again

Technical Data:

Technical Data:

Control:

[CNC](#)

Buyer Information:

Condition:

[Very good condition](#)

Available:

[On Request](#)

Sold as:

[Free Loaded on Truck \(LOT\)](#)

VAT:

[19 %](#)

Buyers Premium:

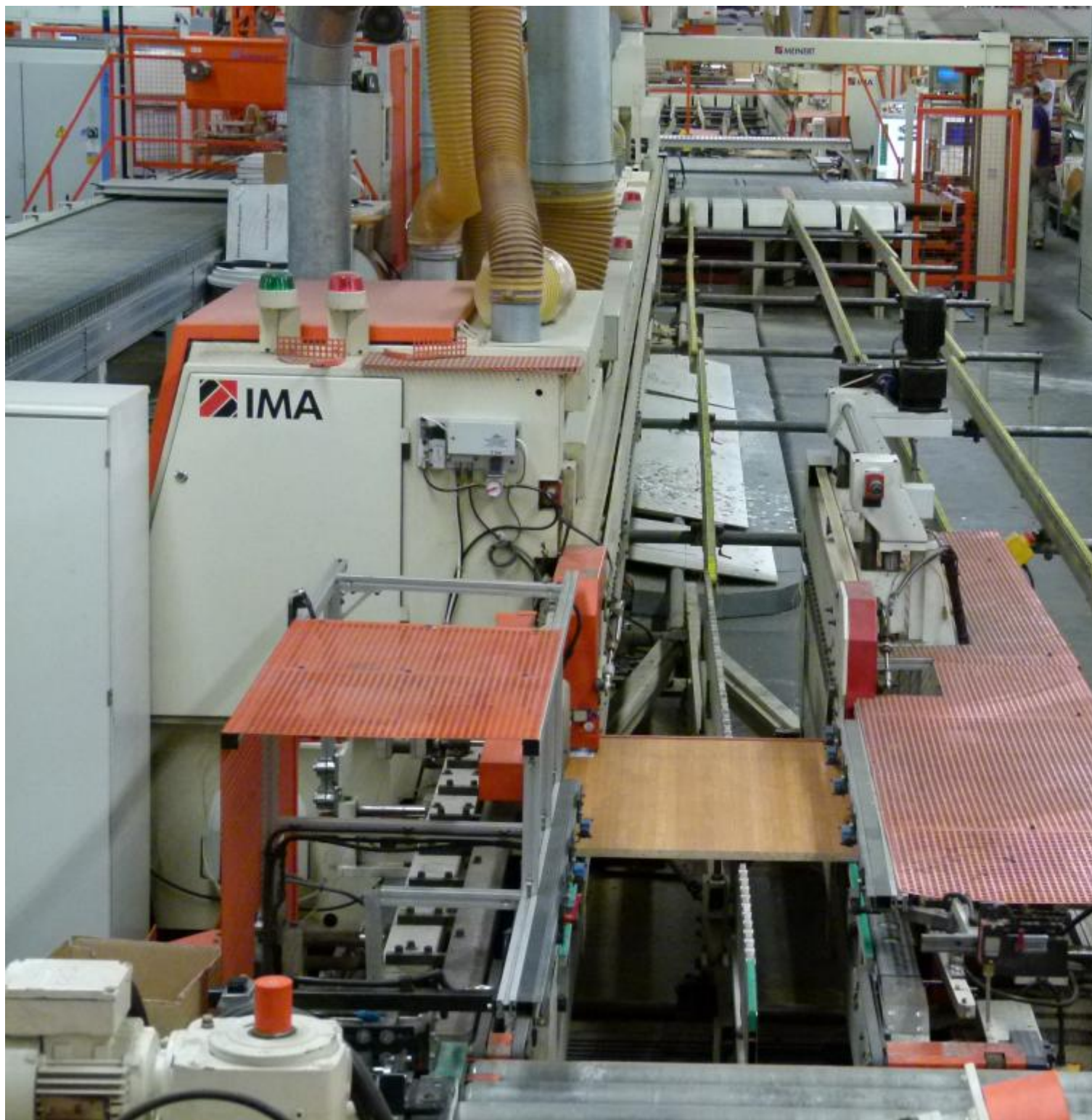
[15 %](#)

Location:

Germany

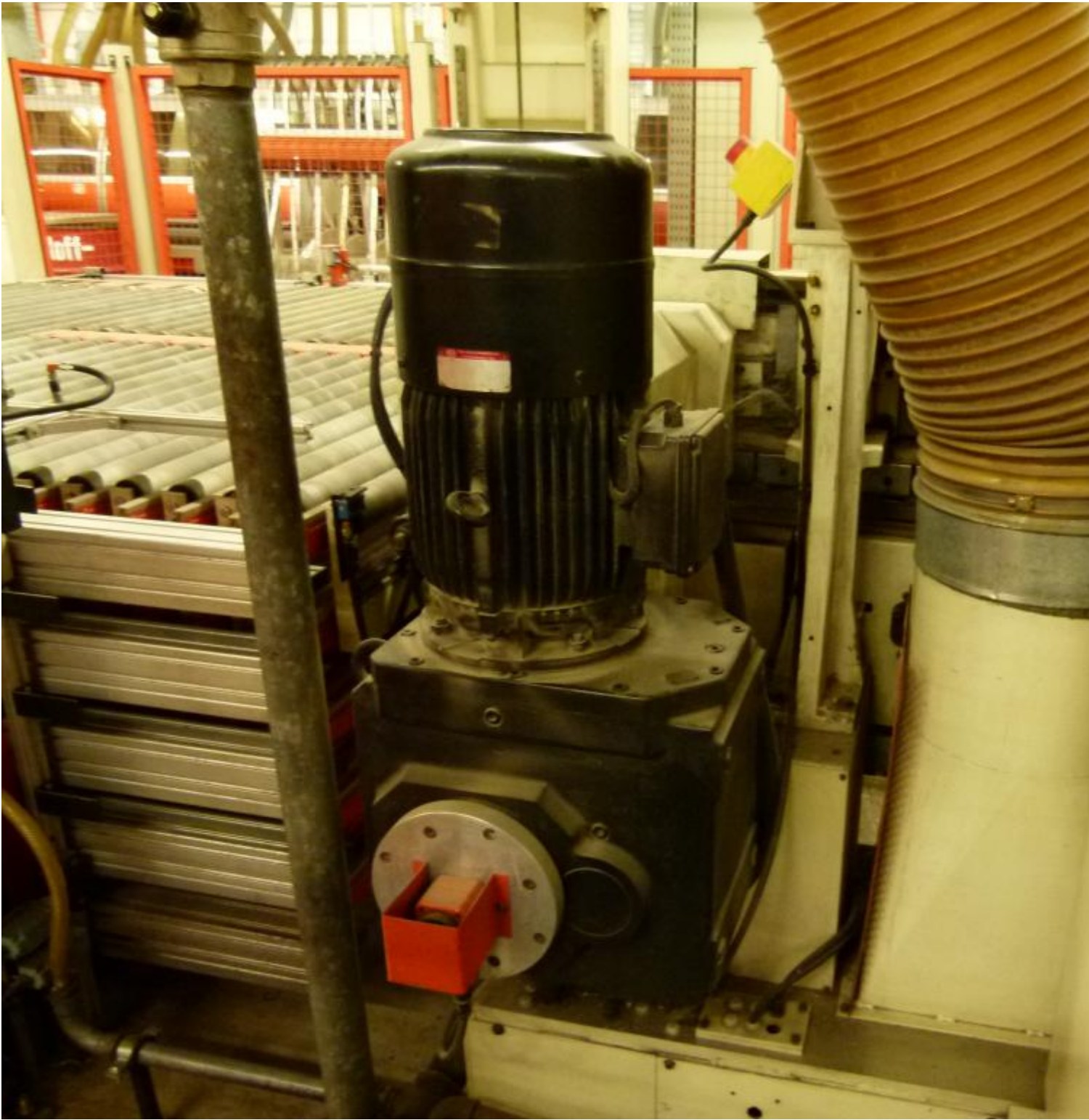
Images:







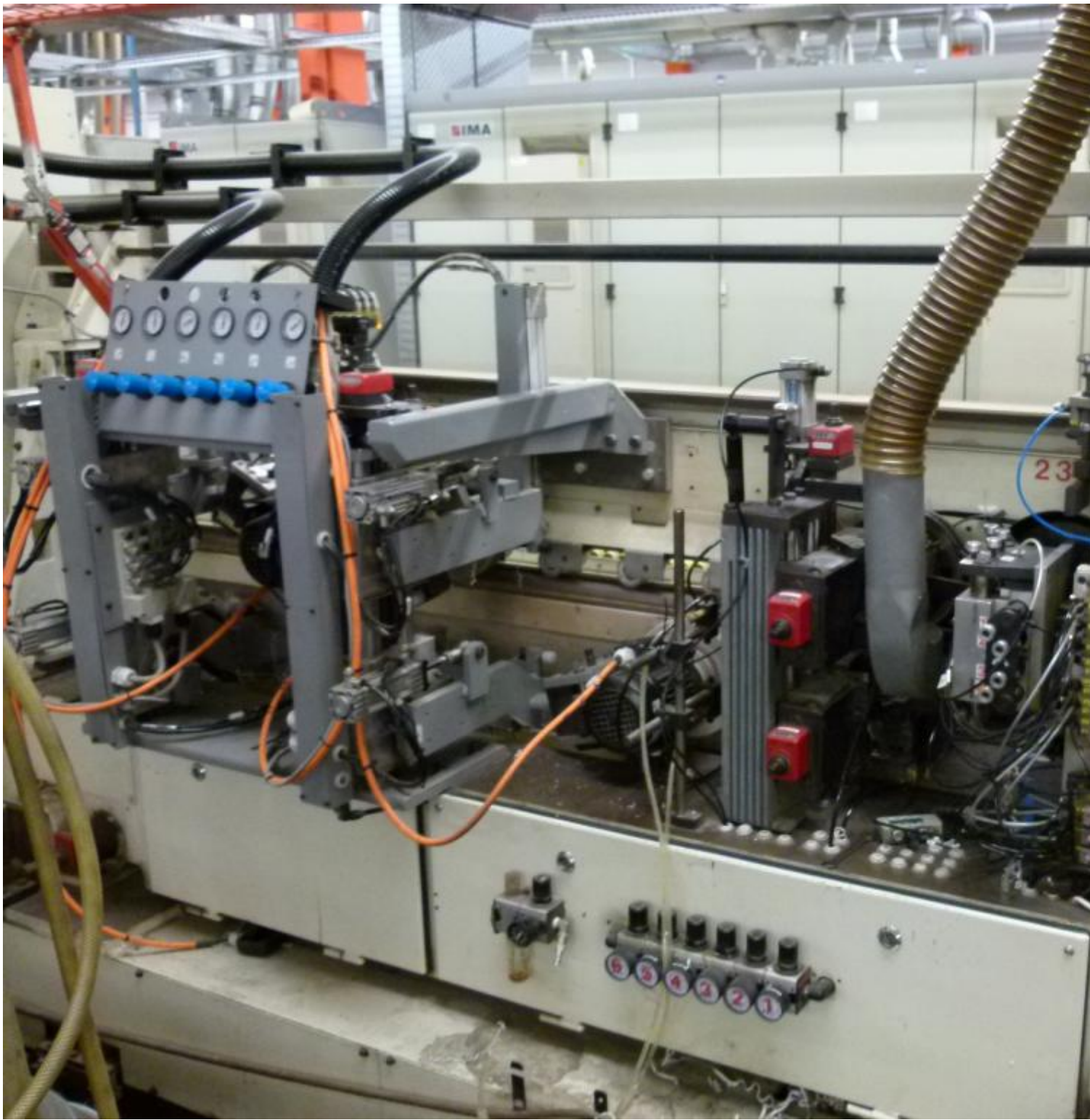




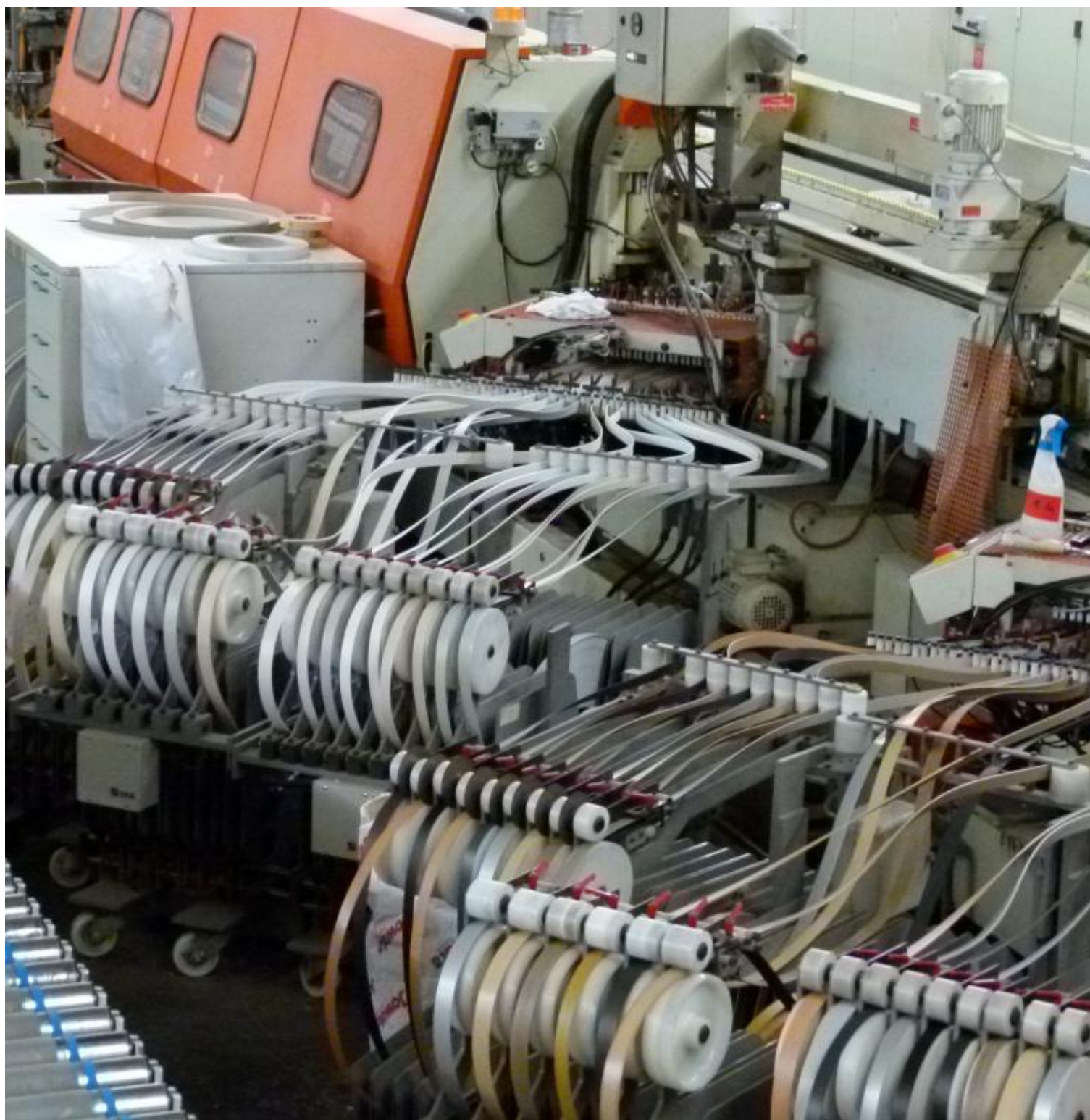






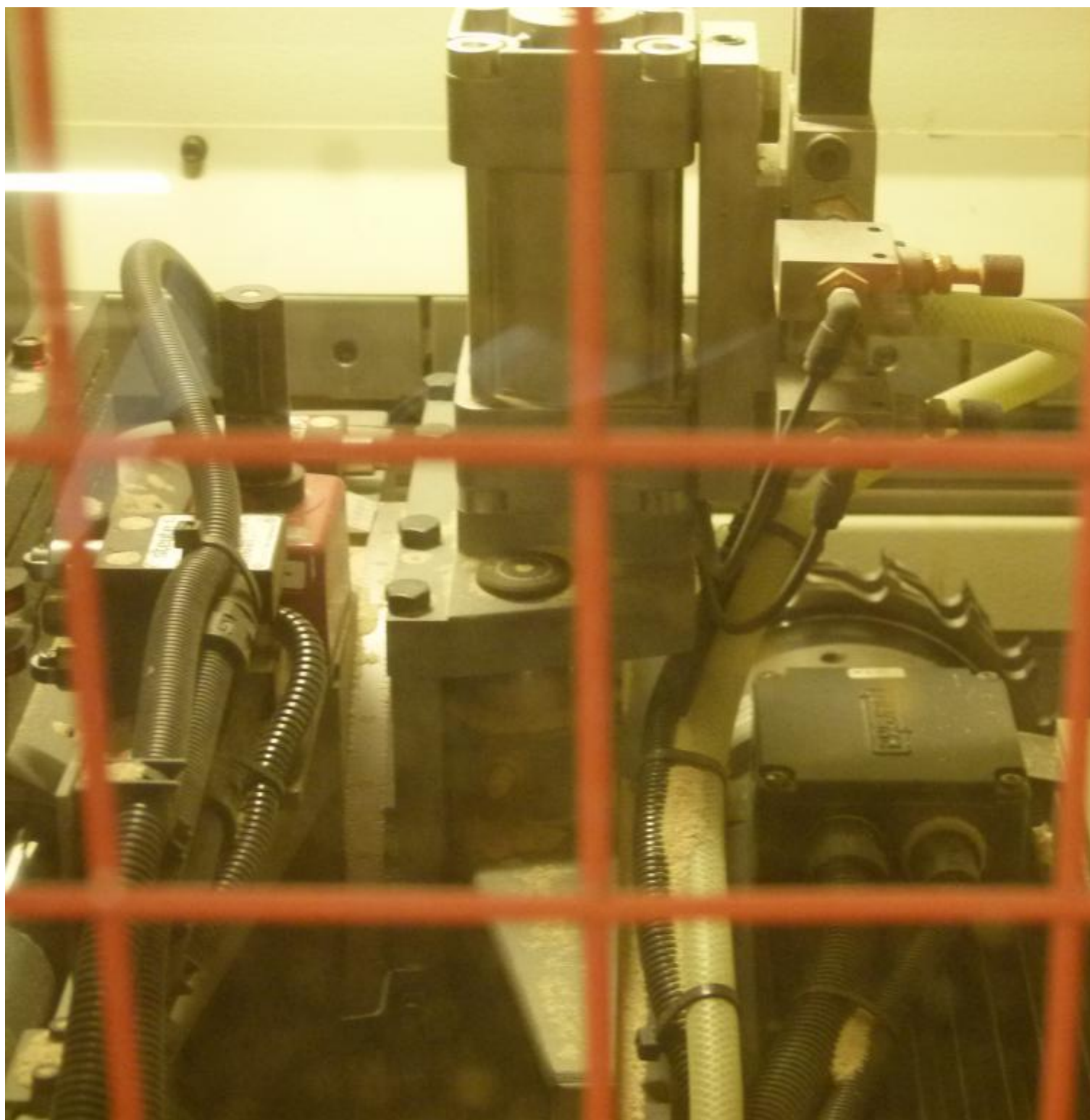


























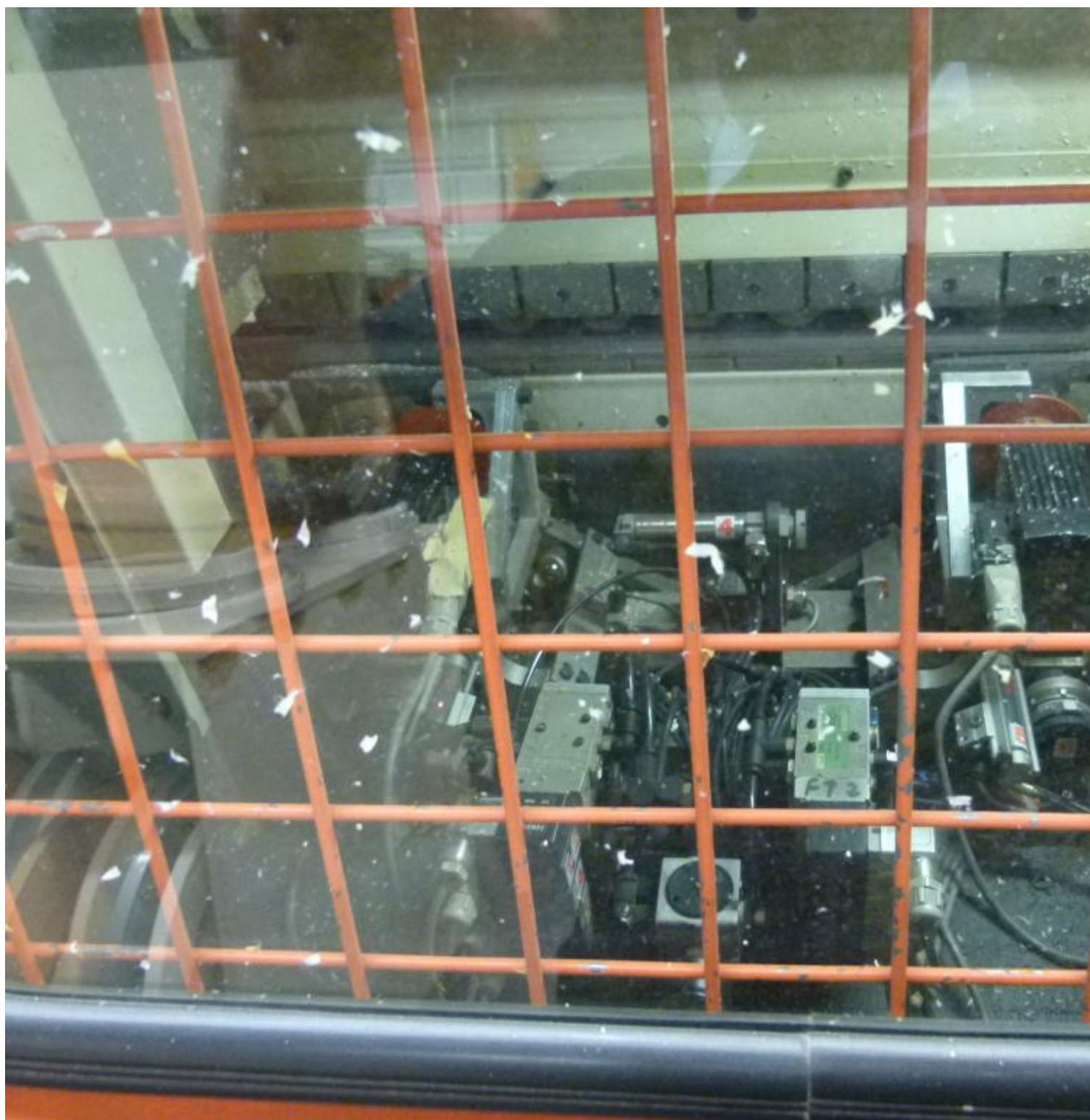




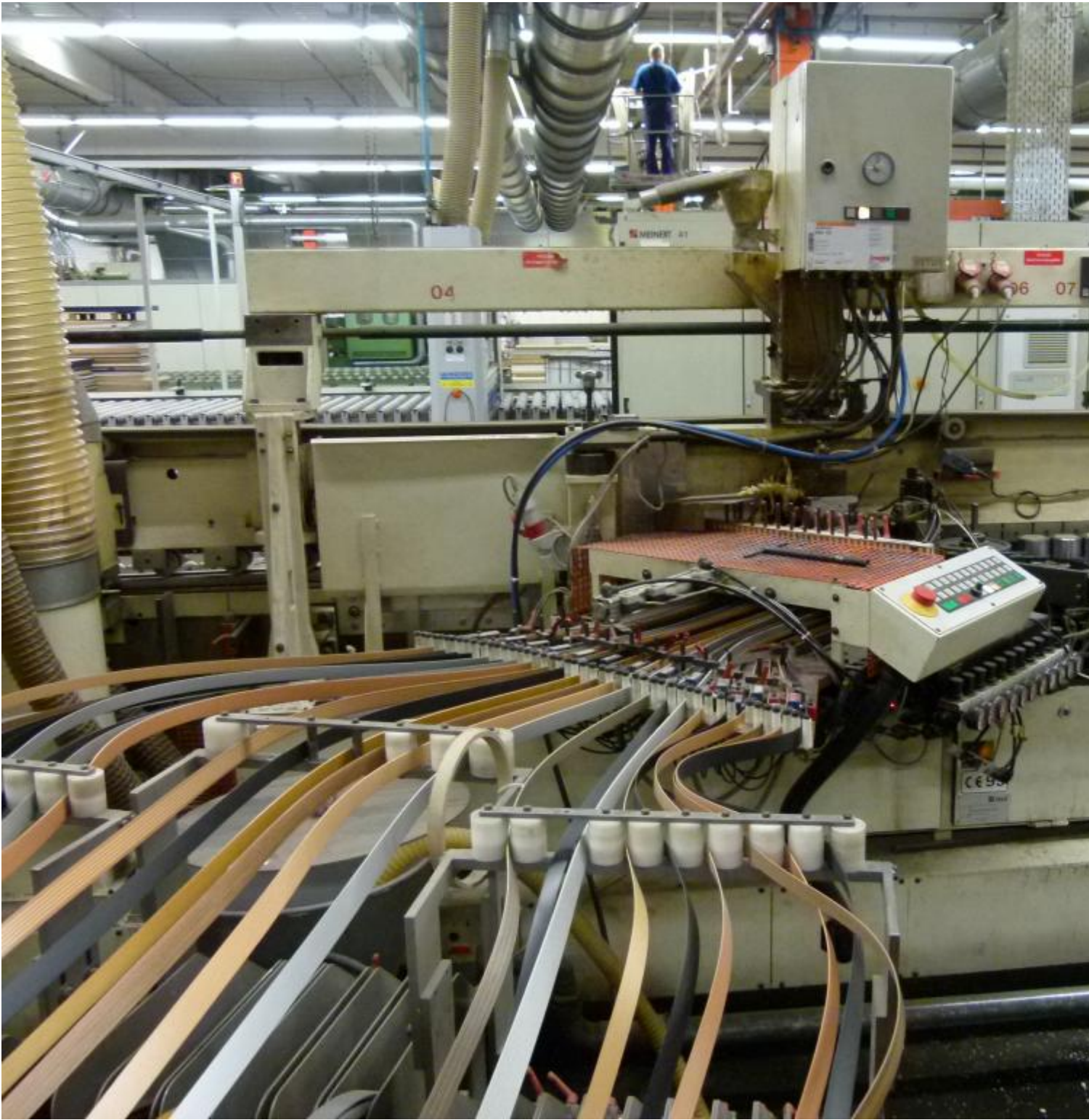


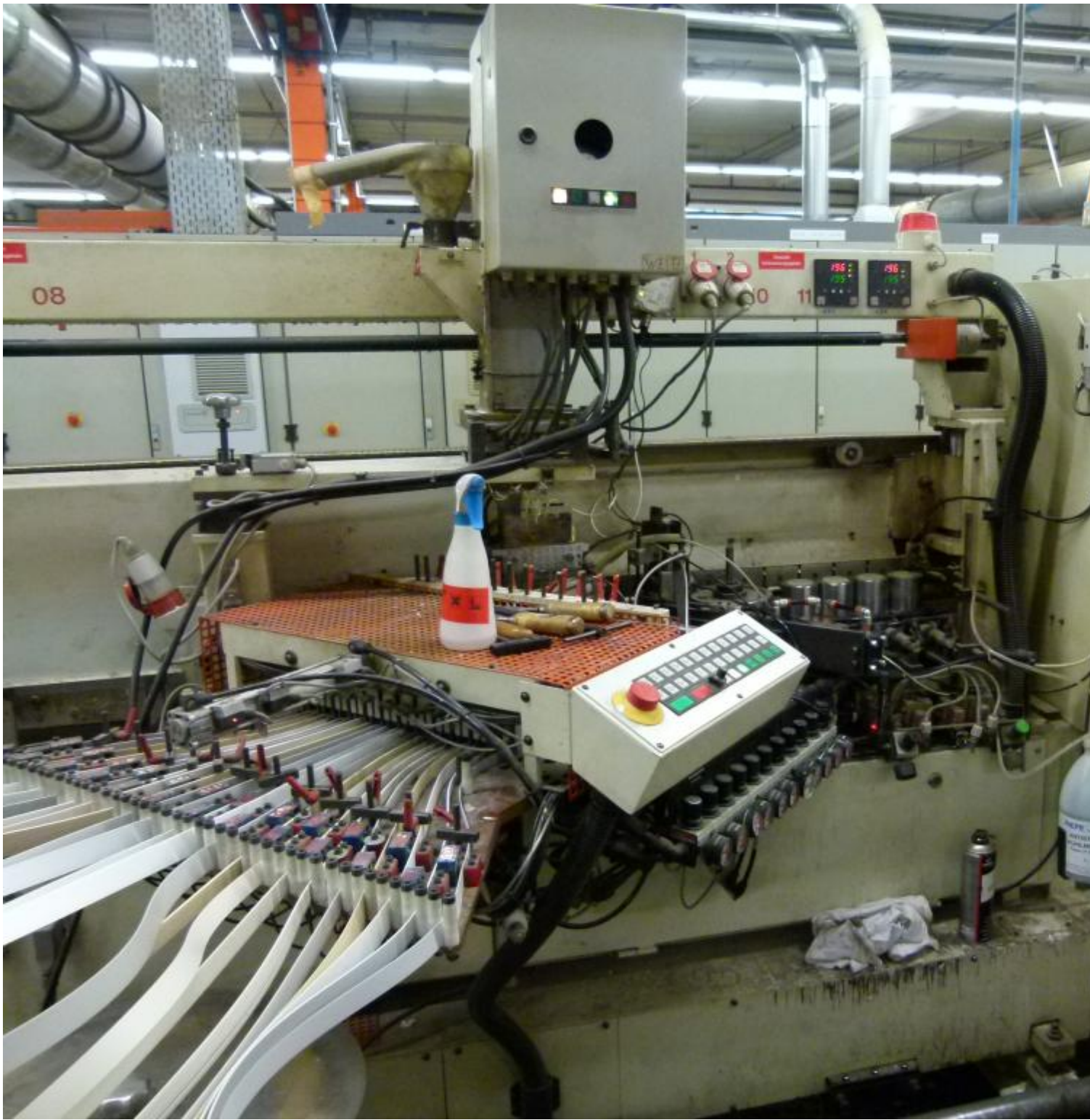


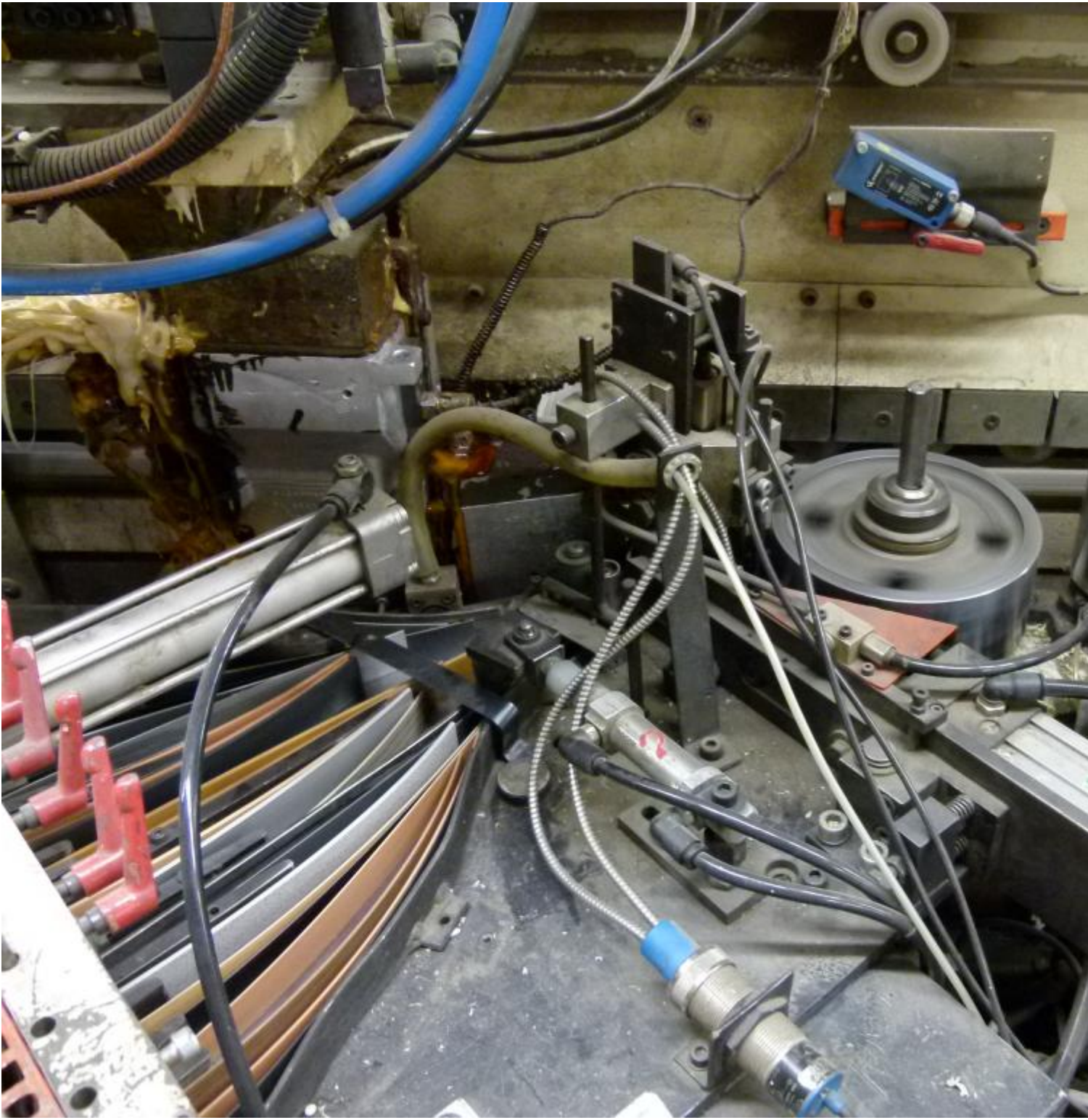
















Asset-Trade

Assessment and Sale of Used Assets world wide

Am Sonnenhof 16

47800 Krefeld

Germany

Tel.: +49 2151 32500 33

Fax.: +49 2151 65 29 22

Email: info@asset-trade.de

Web.: <https://www.asset-trade.de/en>

Ref. No.:
239-09301609

Overview and Technical Data:

IMA - Combima K II R75-5:1 1820 V R3 - Edge processing machine



Year of Build:
Jan 1995

Description:

Two IMA COMBIMA / K /II / R75 - 5:1 /1820 / V / R3 - Edge processing machine

Combima to format / profiling, for edge gluing and edge reworking of plate-shaped workpieces.

Technical data:

- Edge materials: plastic strips, in rolls
- min. Length of strip material in roll = 300 mm
- min. Length of strip material in roll = 14 mm
- Strip thickness for roll materials = 0.4 - 3 mm
- Damping profile = approximately 1.9 mm
- min. Workpiece length = 200mm
- min. Workpiece thickness = 8 mm
- max. Workpiece thickness = 45 mm
- min. Workpiece overhang from the chain conveyor, each side = 45 mm
- one. Workpiece overhang from the chain conveyor, each side = 85 mm
- min. Passage width at 45 mm Workpiece overhang on the edit page and - 15 mm on the opposite page without editing
 - Processing along with counter-mounted support rollers, lifting rails and flat-belt drive chain between the tracks about 235 mm =
 - Longitudinal working with movable counter-pressure rolls on - 50 mm = 200 mm short pieces in place with a cam.
 - Profiling = 230 mm
 - Profiling: only applicable for short parts of a machine with cams cam feed = 320 mm
- max. Working width 2600 mm
- Cam 540/450 mm spacing
- Air conditioner, cooling capacity 1000 W
- IMATRONIC-control computer

For more details request again

Technical Data:

Technical Data:

Control:

[CNC](#)

Buyer Information:

Condition:

[Very good condition](#)

Available:

[On Request](#)

Sold as:

[Free Loaded on Truck \(LOT\)](#)

VAT:

[19 %](#)

Buyers Premium:

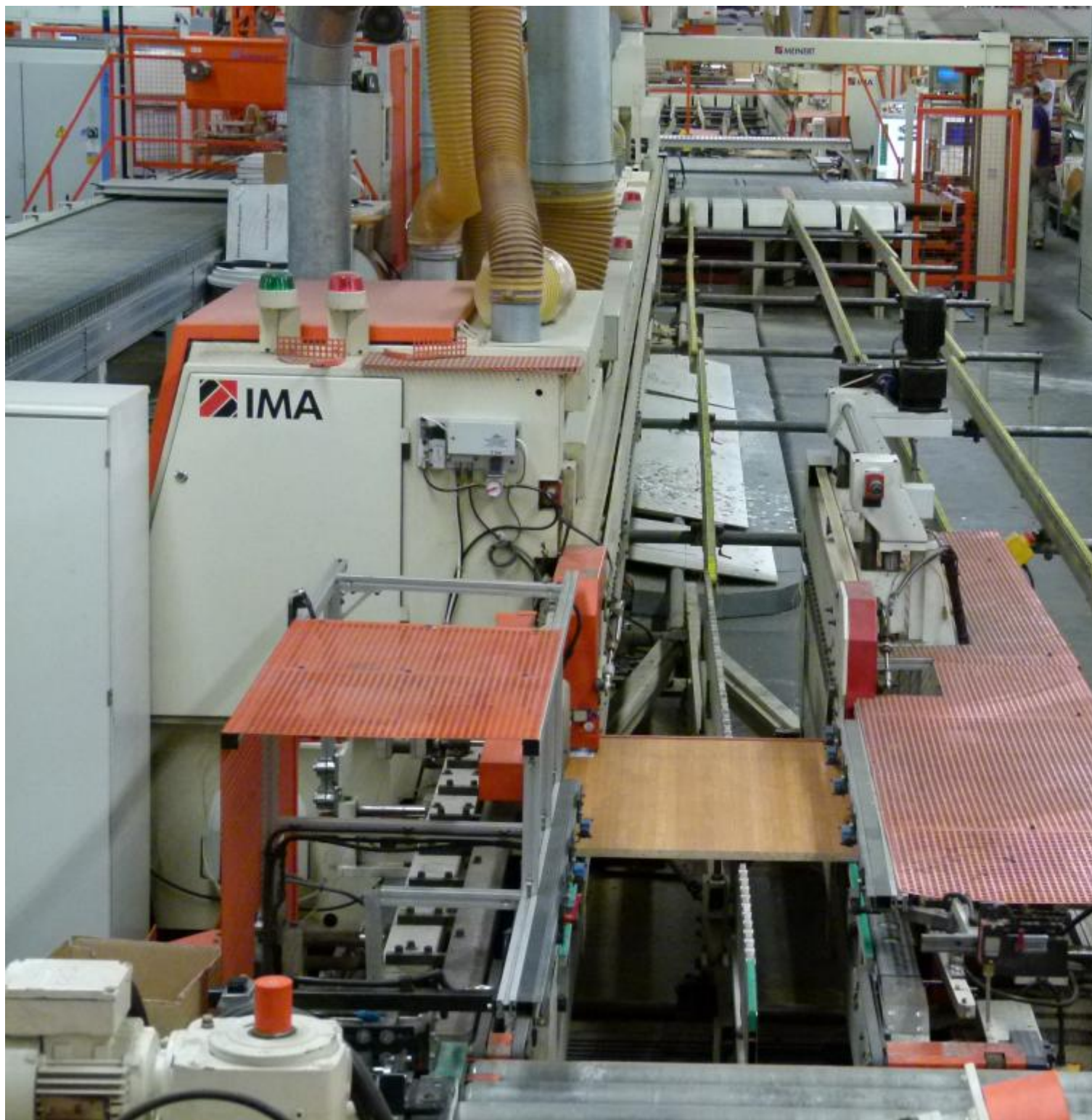
[15 %](#)

Location:

Germany

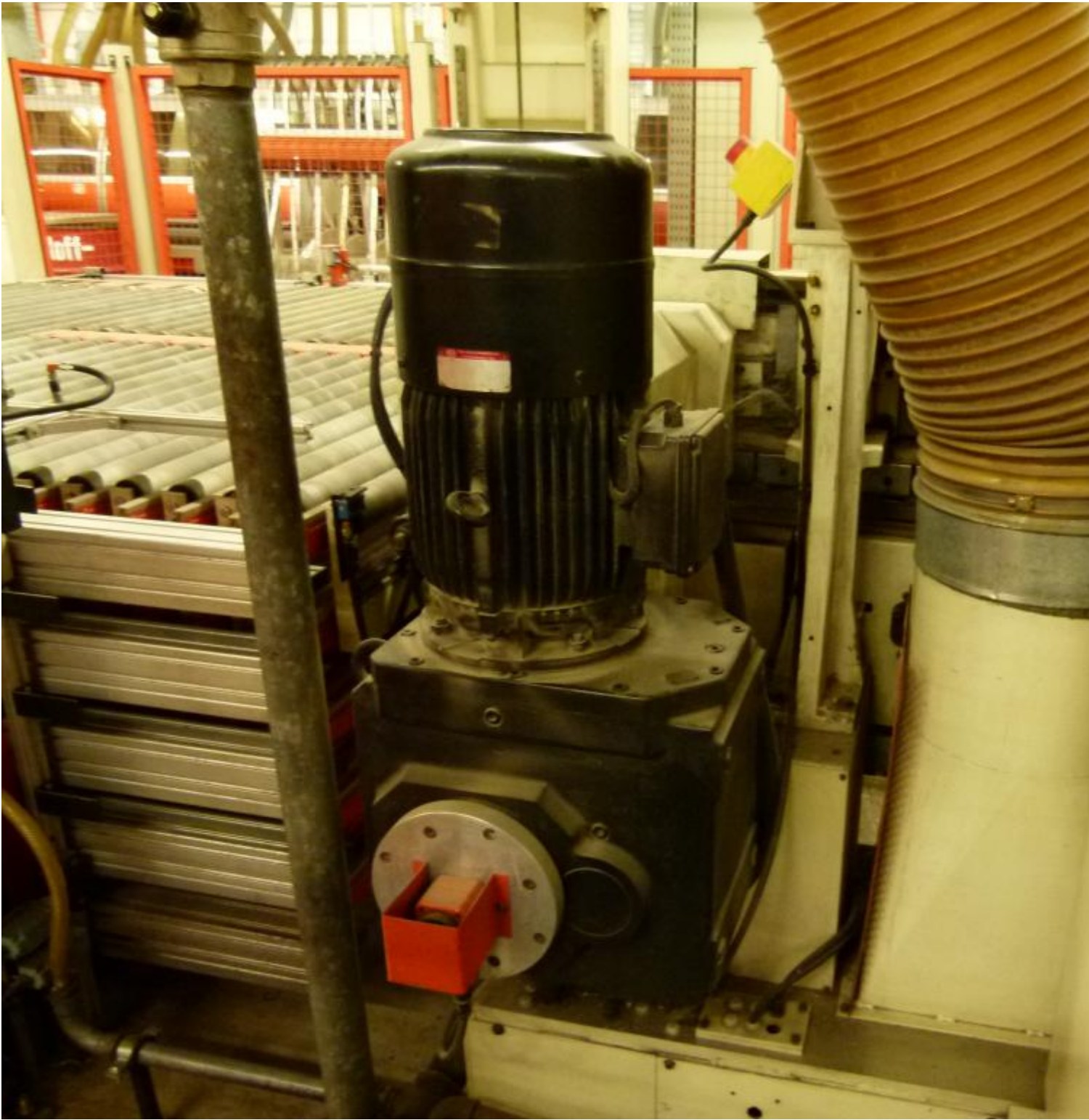
Images:







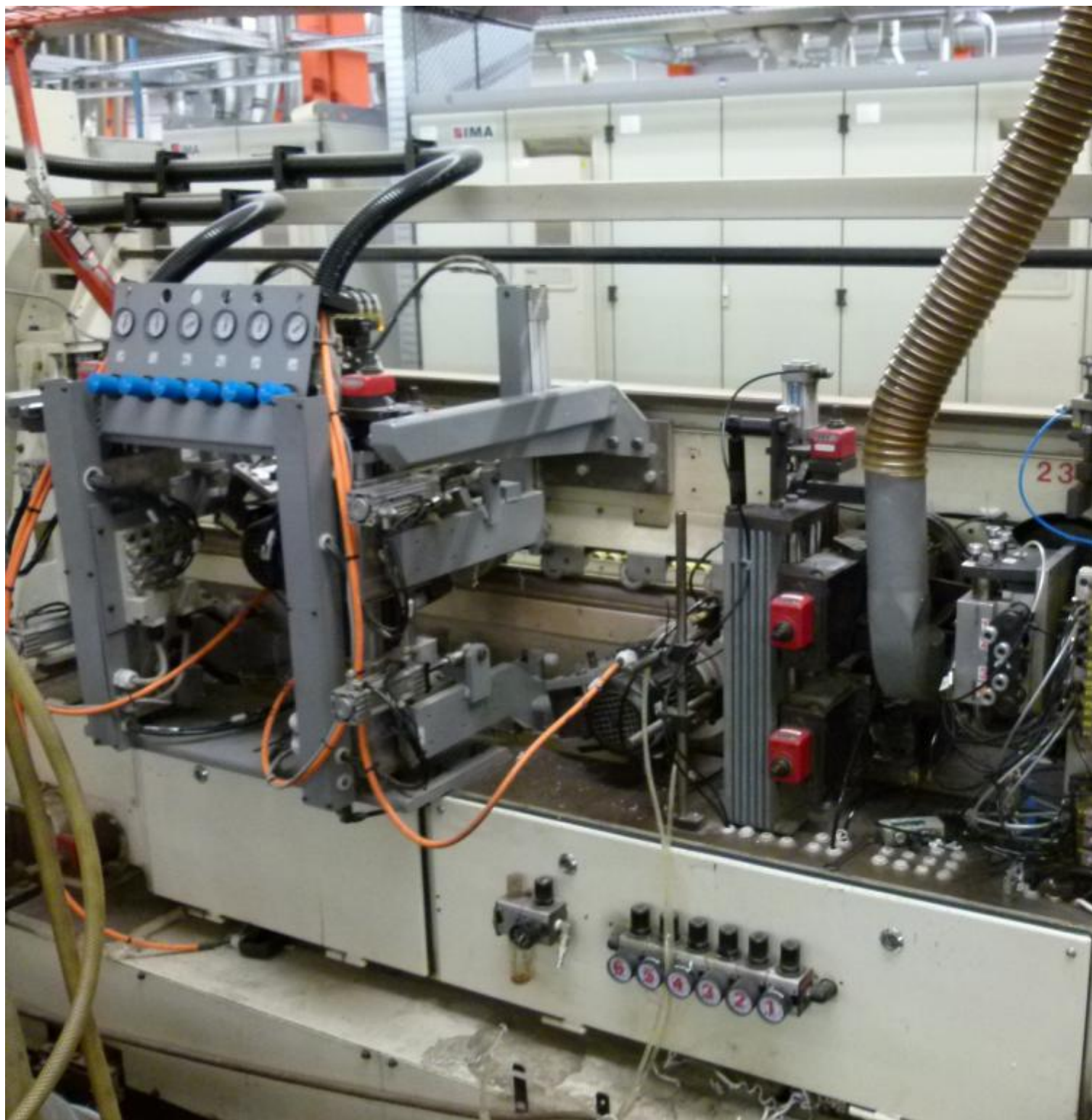




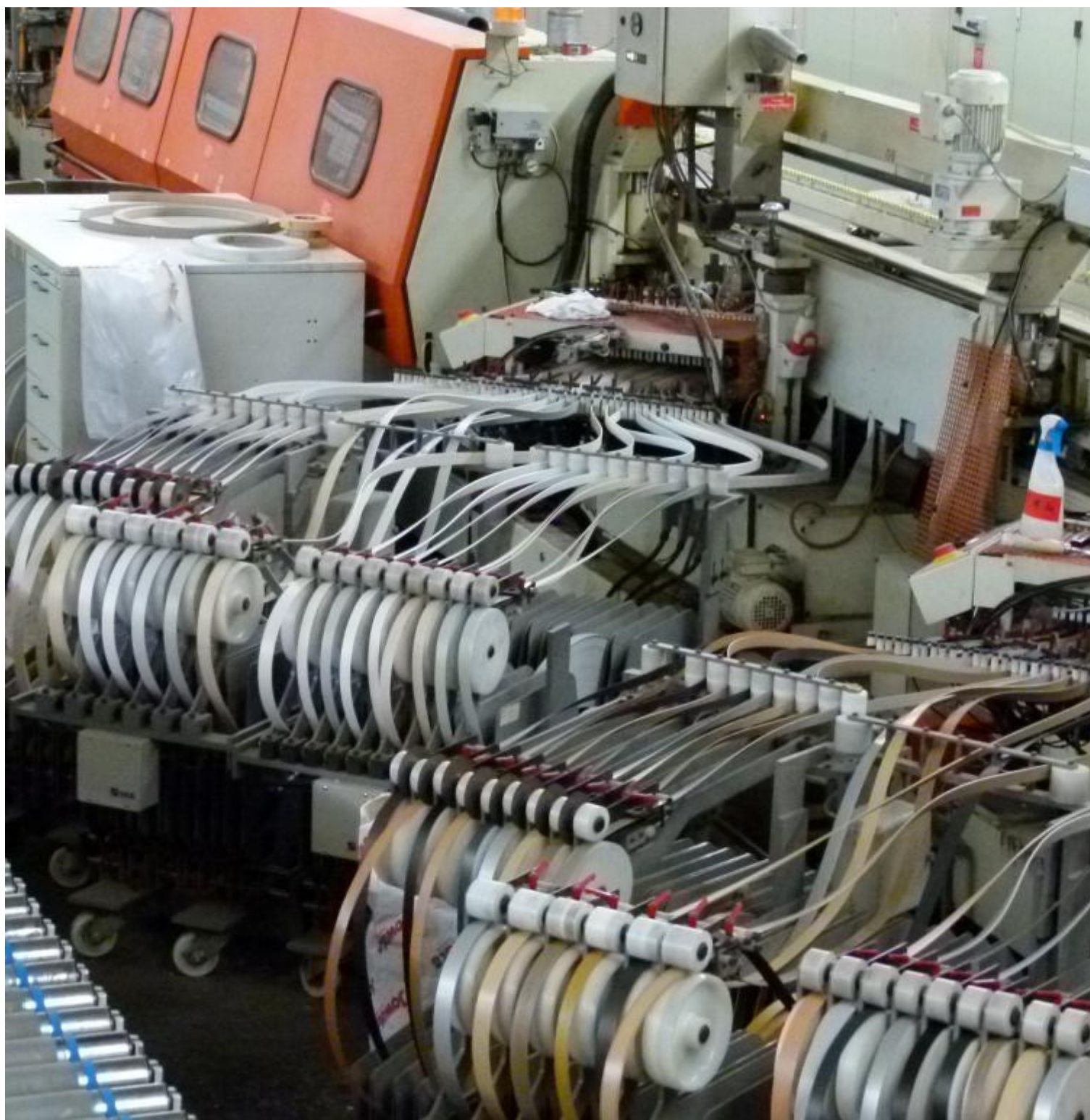






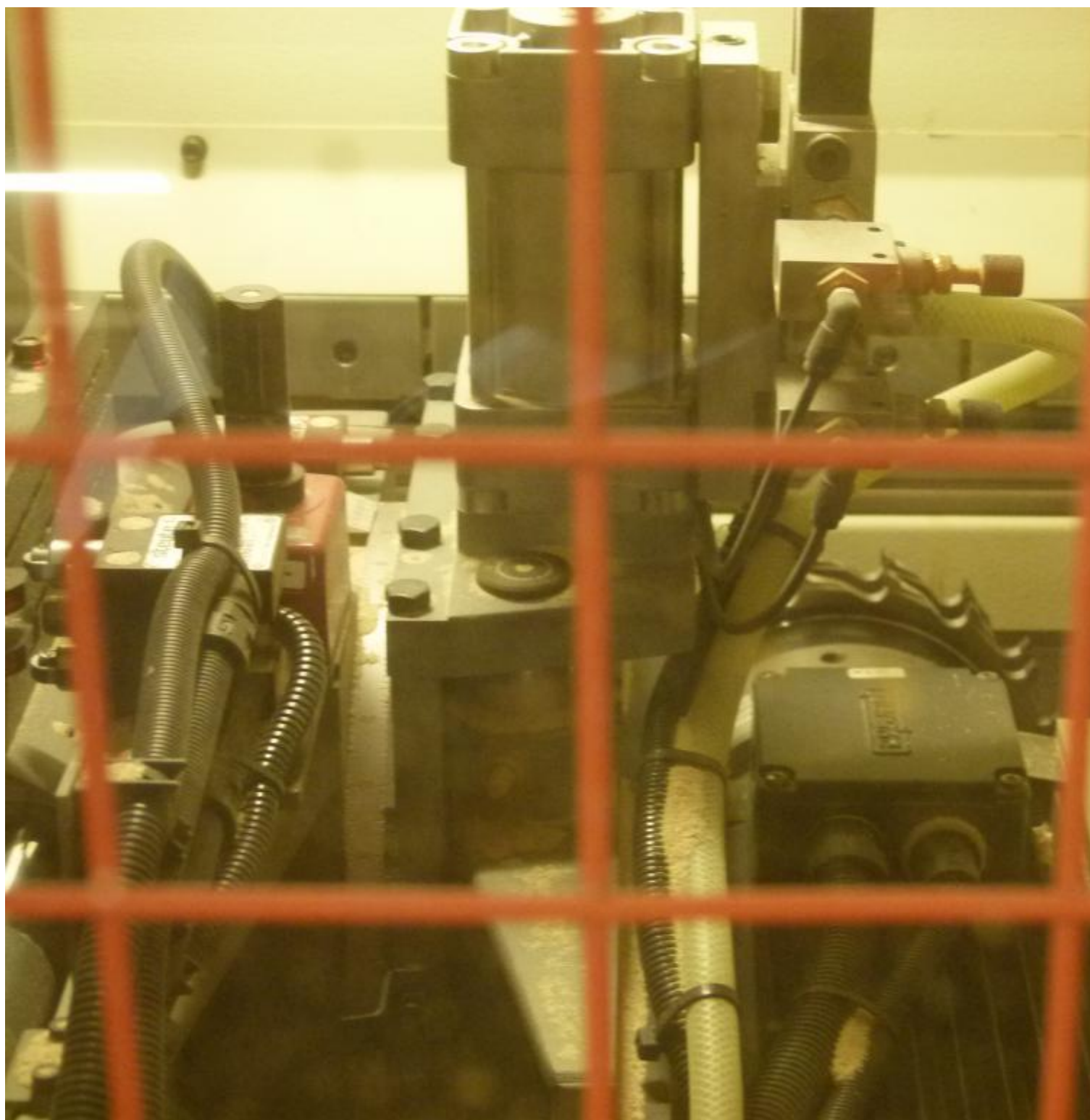


















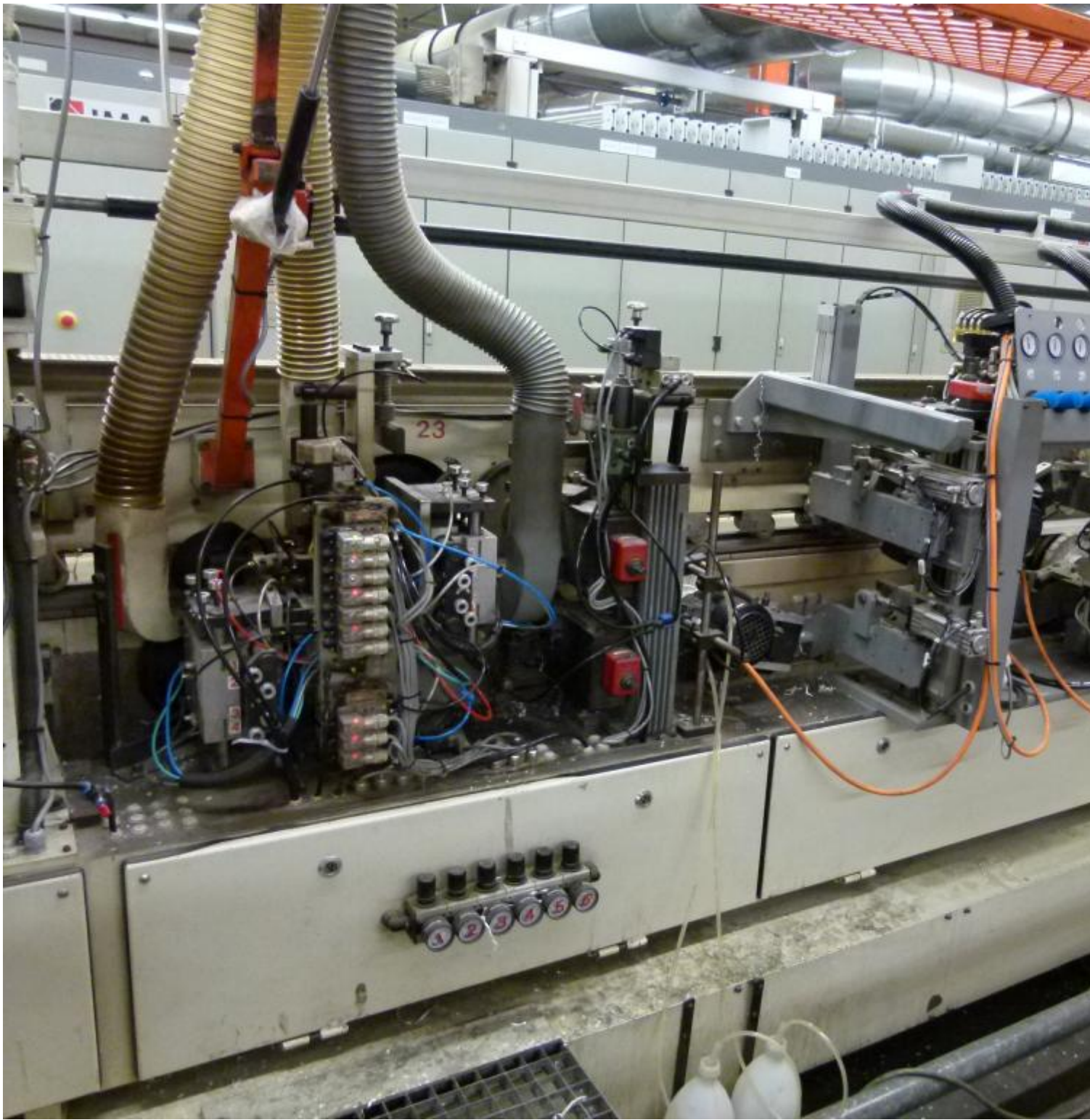








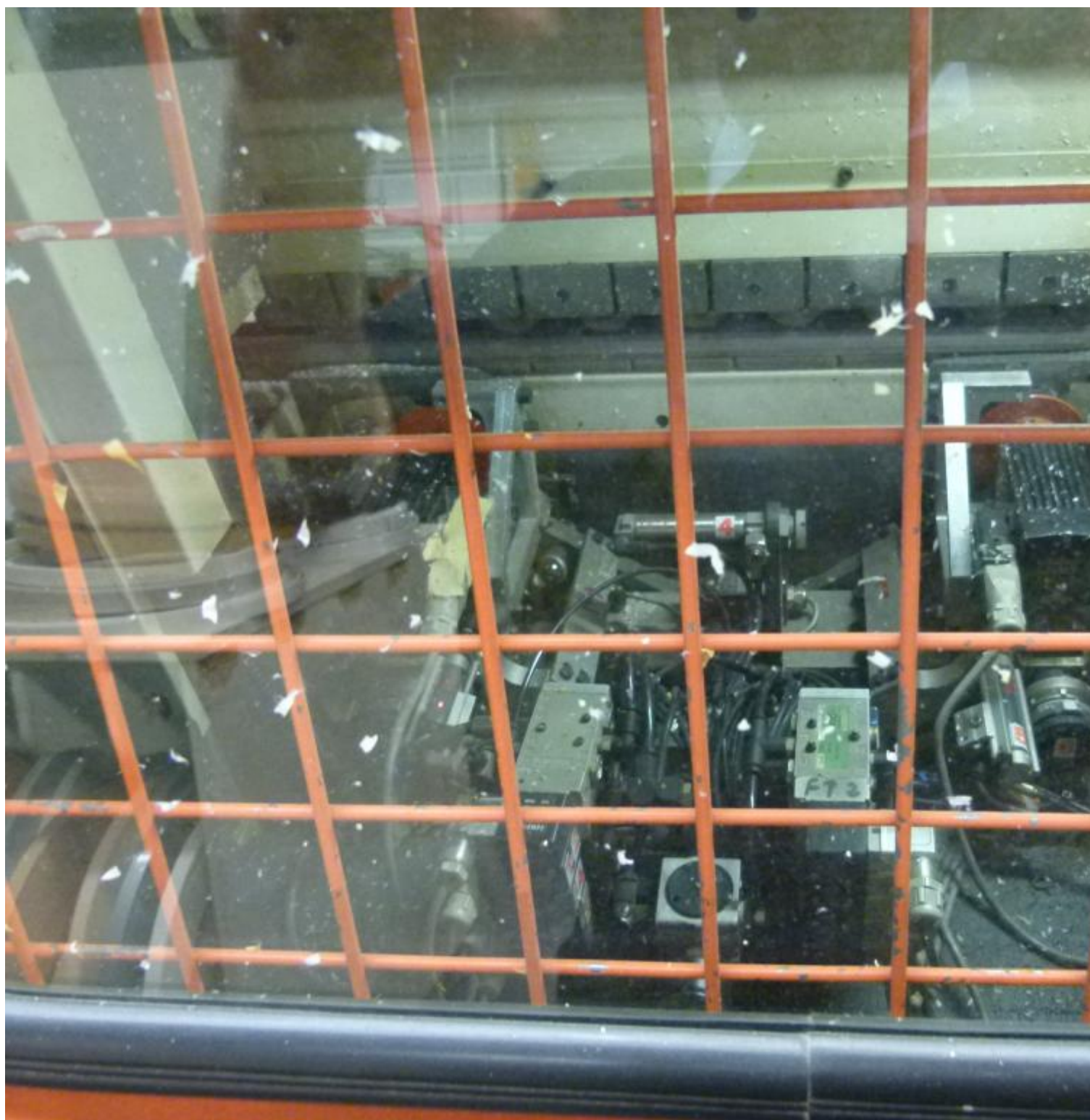




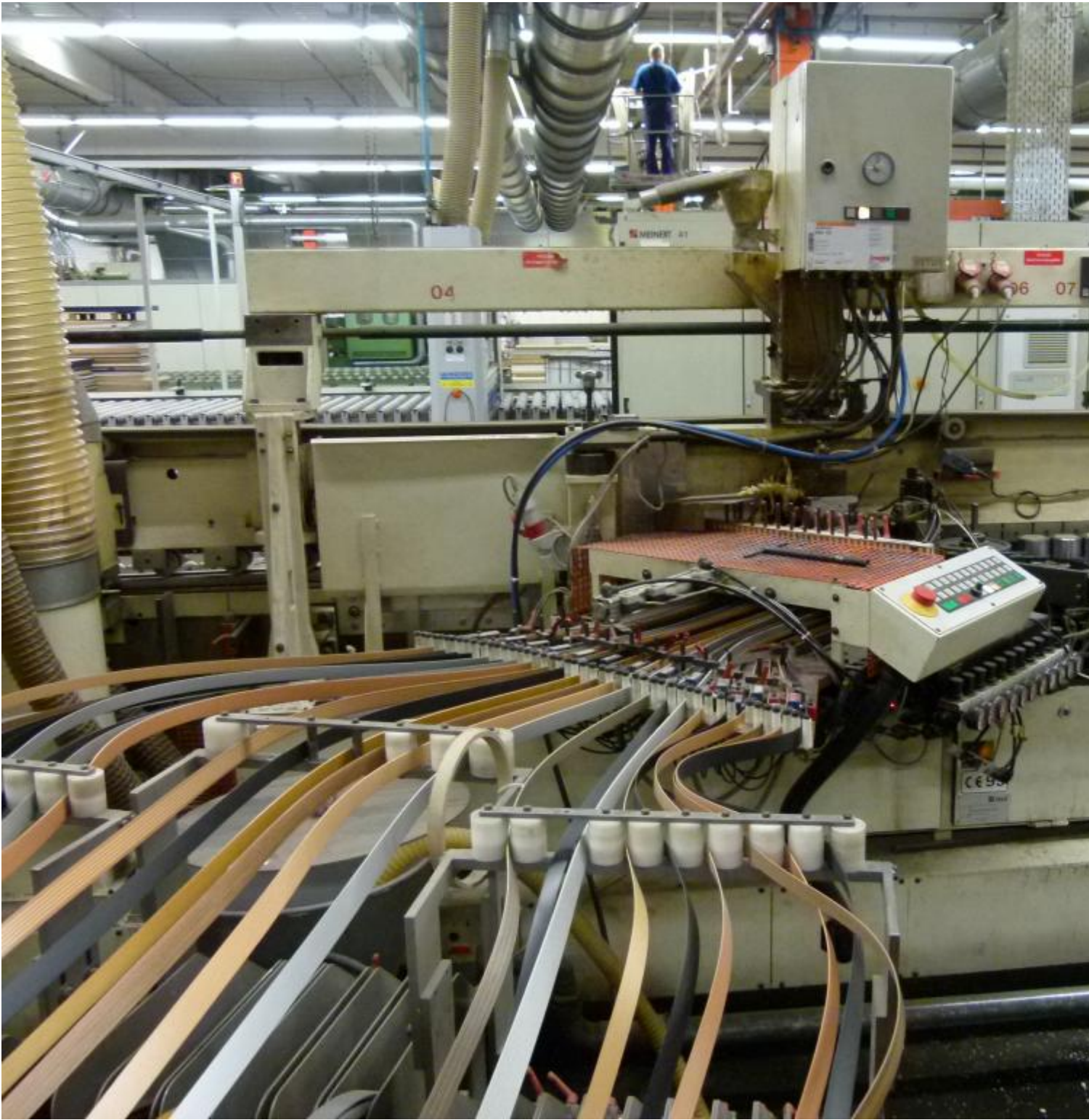


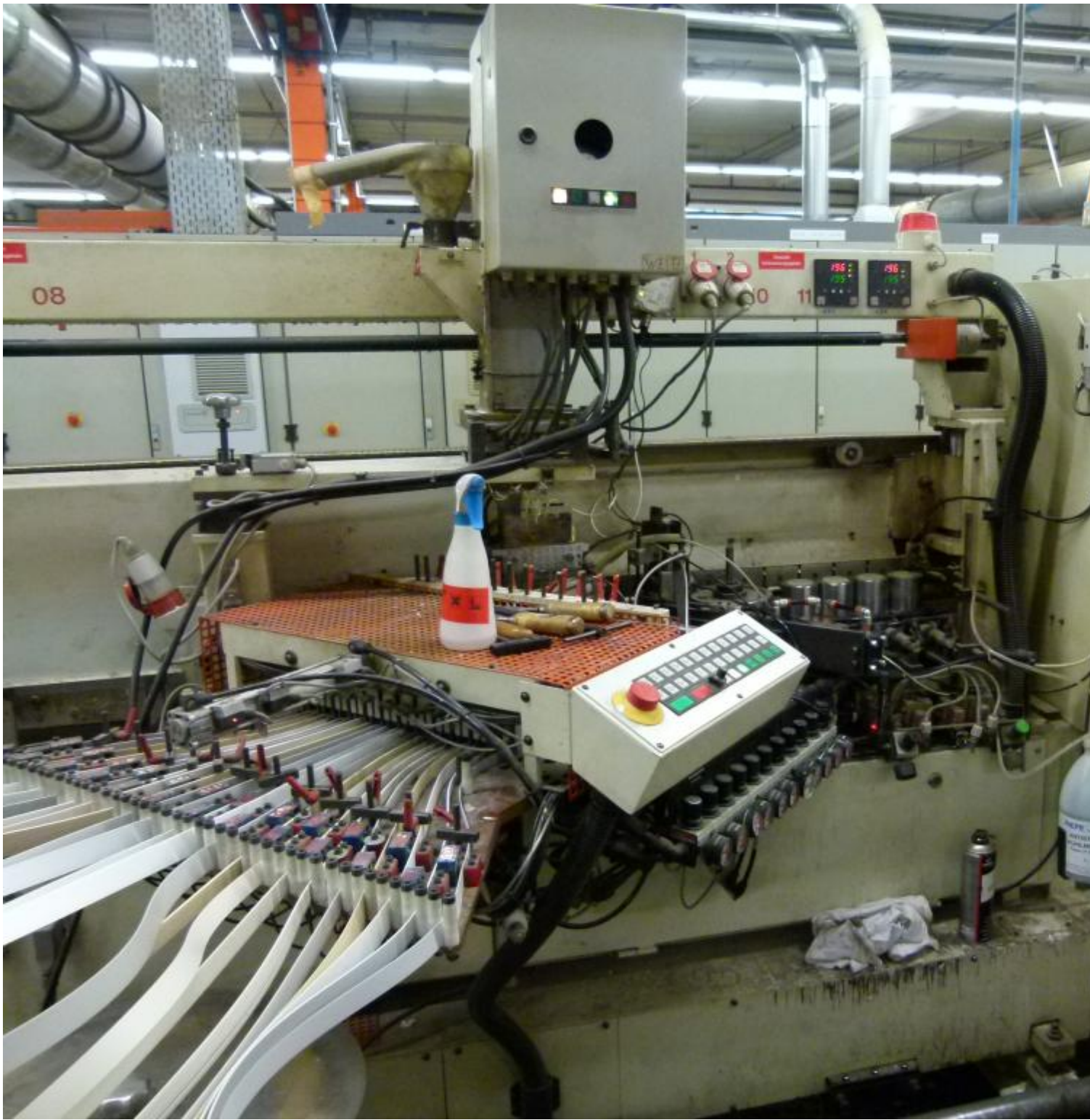


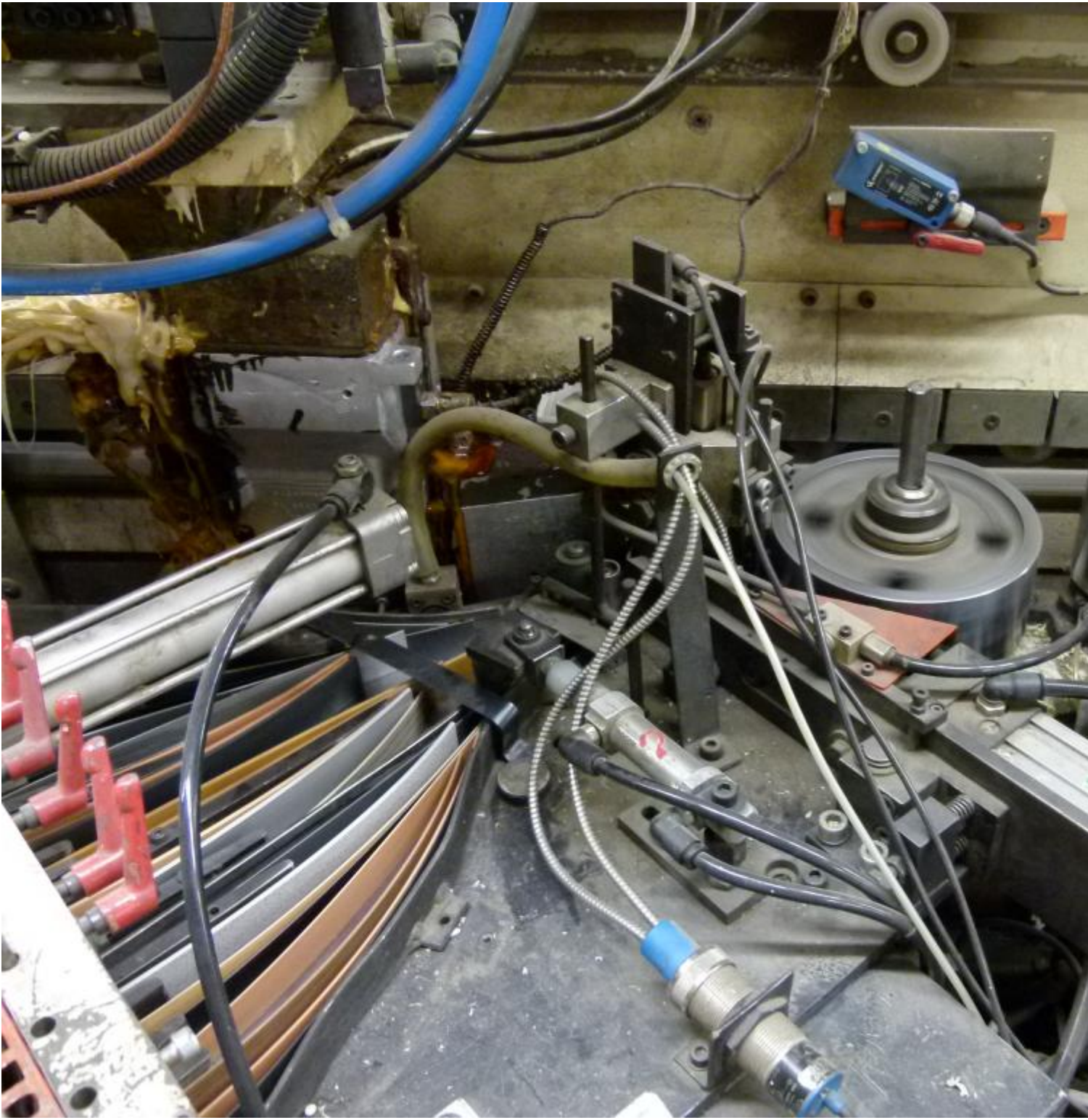
















Asset-Trade

Assessment and Sale of Used Assets world wide

Am Sonnenhof 16

47800 Krefeld

Germany

Tel.: +49 2151 32500 33

Fax.: +49 2151 65 29 22

Email: info@asset-trade.de

Web.: <https://www.asset-trade.de/en>

Generated on 17.02.2026

© Copyright 2026 - [Asset-Trade](#)

Page