



Image not found or type unknown

Ref. No.:

344-10300928

Overview and Technical Data:

HELLER - MC 12 Fanuc Control

HELLER

HELLER

Year of Build:
Jan 2007

Description:

Used HELLER MC12 Horizontal - machining center

4-axis machining centres for flexible series production in automotive applications

Technical details

- Control: FANUC 18i
 - Pallets: DIN 55201 A1 400x400mm
 - X-axis: 560mm
 - Y-axis: 560mm
 - Z travel: 510mm
 - Rapid traverse speed: 50 m / min
 - Thrust: 6000 N
 - Ballscrews: D40 x 25mm
 - Turret: 42x chain (Pick Up)
 - max. Tool length from spindle: 300mm
 - max. Tool Weight: 8 KG
 - 4th axis: 360,000 x 0.001 °
 - Tool: SK40 DIN 69871
 - Power: 26 kW at 40%
 - Speed range: 20 to 12,000 1/min
 - Coolant system: yes, ICS 50bar
 - Accessories: manual
 - Dimensions L x W x H: 5x3, 5m
-

Advantages:

- Individual machines for small volumes
- Can be linked to a fully automated manufacturing system (MLS) at any time
- Direct loading (MC-ML modules) or loading via pallet changer (MPC/MCD for heavy-duty machining)
- Highly modular machine structure provides easy scalability to individual requirements
- Highest flexibility at optimum productivity
- Ideal solution configurable to meet any market requirements
- Tailor-made investment in ideal manufacturing solution
- Absolutely future-proof

Technical Data:

Technical Data:

Control:

[Series 18i](#)

Spindle Speed:

12.000 rpm

Tool Capacity:

42 x

Travels:

X-Axis:

560 mm

Y-Axis:

560mm

Z-Axis:

510 mm

Dimensions and Weight:

Height:

3.000 mm

Width:

5.000 mm

Length:

5.300 mm

Weight:

8.500 kg

Buyer Information:

Condition:

[Very good condition](#)

Availability:

[Sold](#)

Sold as:

[Free Loaded on Truck \(LOT\)](#)

VAT:

[19 %](#)

Location:

Germany





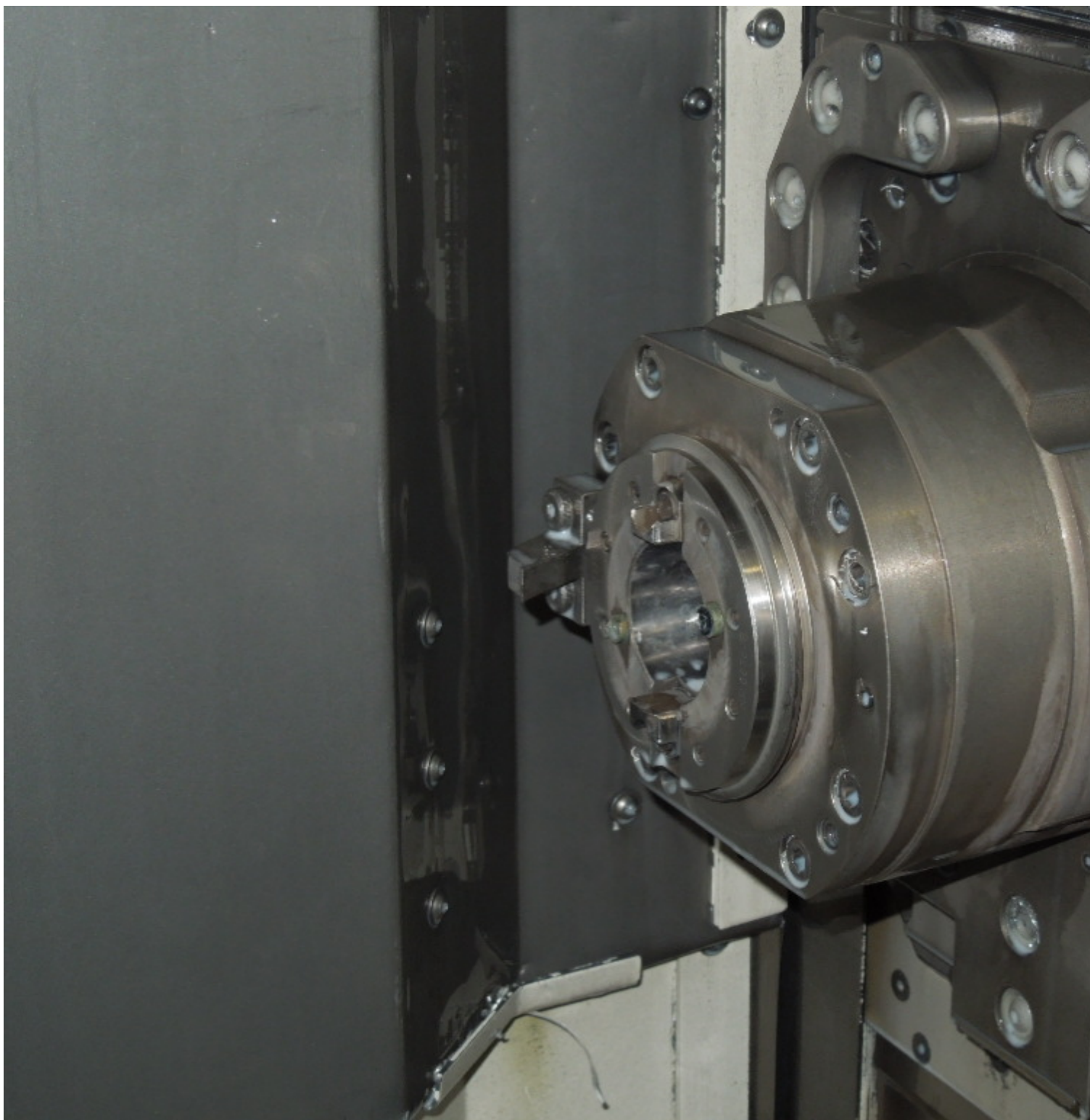




HELLER



















13

Video:



Asset-Trade

Assessment and Sale of Used Assets world wide

Am Sonnenhof 16

47800 Krefeld

Germany

Tel.: +49 2151 32500 33

Fax.: +49 2151 65 29 22

Email: info@asset-trade.de

Web.: <https://www.asset-trade.de/en>

Ref. No.:
344-10300928

Overview and Technical Data:

HELLER - MC 12 Fanuc Control

HELLER

HELLER

Year of Build:
Jan 2007

Description:

Used HELLER MC12 Horizontal - machining center

4-axis machining centres for flexible series production in automotive applications

Technical details

- Control: FANUC 18i
 - Pallets: DIN 55201 A1 400x400mm
 - X-axis: 560mm
 - Y-axis: 560mm
 - Z travel: 510mm
 - Rapid traverse speed: 50 m / min
 - Thrust: 6000 N
 - Ballscrews: D40 x 25mm
 - Turret: 42x chain (Pick Up)
 - max. Tool length from spindle: 300mm
 - max. Tool Weight: 8 KG
 - 4th axis: 360,000 x 0.001 °
 - Tool: SK40 DIN 69871
 - Power: 26 kW at 40%
 - Speed range: 20 to 12,000 1/min
 - Coolant system: yes, ICS 50bar
 - Accessories: manual
 - Dimensions L x W x H: 5x3, 5m
-

Advantages:

- Individual machines for small volumes
- Can be linked to a fully automated manufacturing system (MLS) at any time
- Direct loading (MC-ML modules) or loading via pallet changer (MPC/MCD for heavy-duty machining)
- Highly modular machine structure provides easy scalability to individual requirements
- Highest flexibility at optimum productivity
- Ideal solution configurable to meet any market requirements
- Tailor-made investment in ideal manufacturing solution
- Absolutely future-proof

Technical Data:

Technical Data:

Control:

[Series 18i](#)

Spindle Speed:

12.000 rpm

Tool Capacity:

42 x

Travels:

X-Axis:

560 mm

Y-Axis:

560mm

Z-Axis:

510 mm

Dimensions and Weight:

Height:

3.000 mm

Width:

5.000 mm

Length:

5.300 mm

Weight:

8.500 kg

Buyer Information:

Condition:

[Very good condition](#)

Availability:

[Sold](#)

Sold as:

[Free Loaded on Truck \(LOT\)](#)

VAT:

[19 %](#)

Location:

Germany





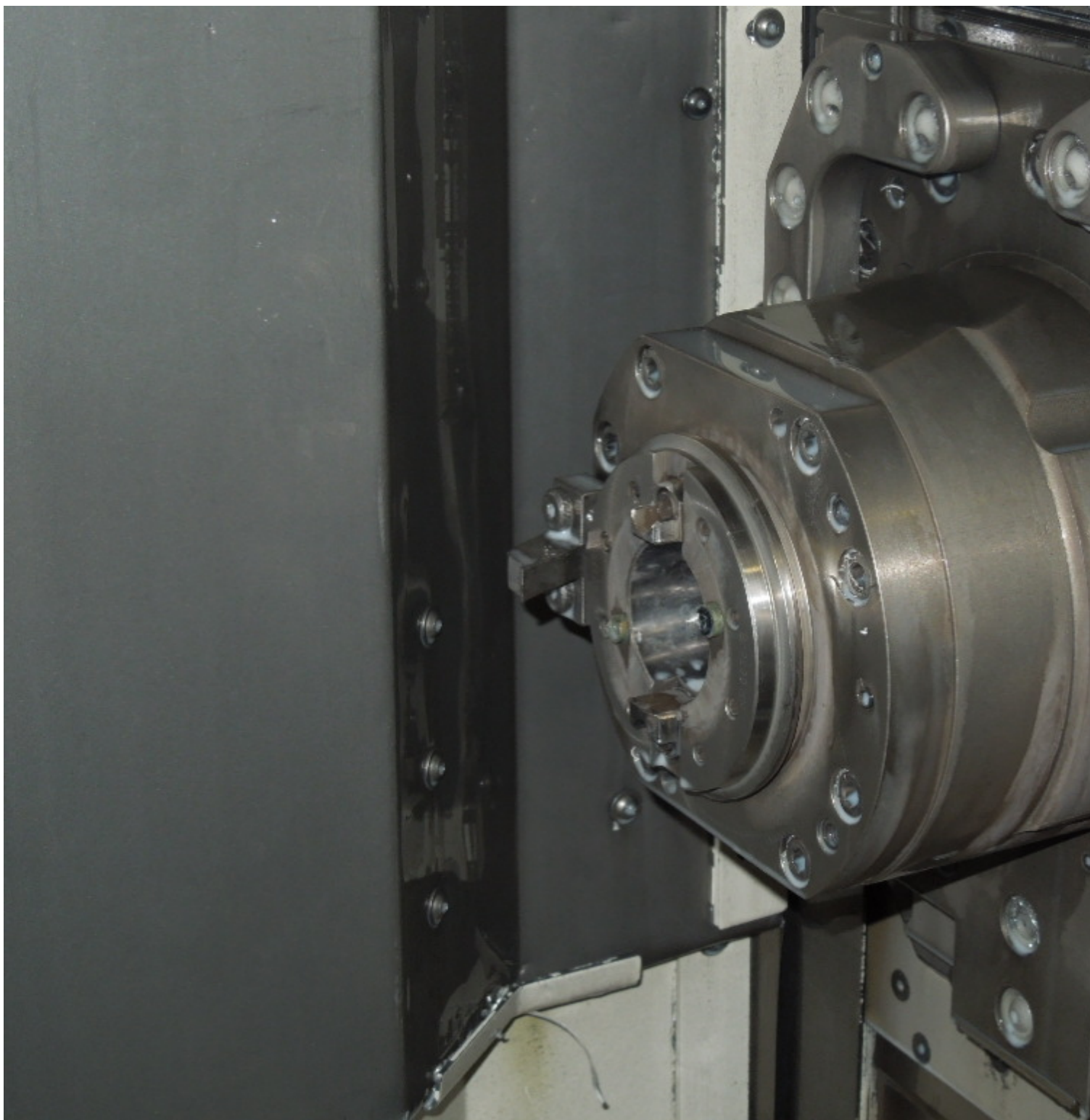




HELLER



















13

Video:



Asset-Trade

Assessment and Sale of Used Assets world wide

Am Sonnenhof 16

47800 Krefeld

Germany

Tel.: +49 2151 32500 33

Fax.: +49 2151 65 29 22

Email: info@asset-trade.de

Web.: <https://www.asset-trade.de/en>

Generated on 19.12.2025

© Copyright 2025 - [Asset-Trade](#)

Page