



# Asset-Trade

Assessment & Sale of Used Assets

Ref. No.: 428-07121754

## Overview and Technical Data:

**GLEASON - PFAUTER - PE 1600/2000 Gear Hobbing-vertical**

**GLEASON PFAUTER**

**Gleason - PFAUTER**

Year of Build: Jan 1995



## Description:

### **Used PFAUTER PE1600/2000 - CNC High precision gear milling & hobbing machine**

Complete fabrication unit for high precision, big dimension gears - Quality Class 4

Operating Hrs 21000 and Spindle hrs only about 8400 hrs as the machine was for backup purposes.

Controls BOSCH 220

- Milling of angled & straight external toothing
- Hobbing of internal & external toothing.

#### MILLING TOOL

- Diameters: 40 mm; 50 mm; 60 mm; 60.03 mm; 80 mm; 100 mm
- X-axis stroke: 1135 mm
- Y-axis stroke: 300 mm
- Z-axis stroke: 1100 mm
- maximum turning angle of milling head: +A= 45° // -A = 90°

#### TWINGLE HEAD: TOOL

- catch of wheel 1,3/4"
- stroke lenght: 50 á 380 mm
- Qty double strokes: 8 á 100DC/min
- Cutting speed : 6 á 30m/min
- Max rpm: 3,57 min-1

#### PIECE EXTERNAL TOOTHING

- Max module: 20 mm
- Max. width teeth: 350 mm
- Max dia: 2100 mm

#### PIECE INTERNAL TOOTHING



- max module: 10 mm
- Max width teeth: 350 mm
- Max External dia: 2420 mm
- Max Internal dia: 2300 mm

Space requirements Ca. 6,9 x 8,4 x 3,7 m

Main applications and features of the machine:

The Gear Pfauter PE 1600/2000, was developed as a universal machine for the manufacture of gears in construction machinery, wind power gear machine tools, mining equipment, aircraft, textile machinery, etc.. It can be used for batch, small batch production as well as for mass production.



## Technical Data:

### Technical Data:

Control: CC 220  
Machine Hours: 21000

### Dimensions and Weight:

Height: 3.700 mm  
Length: 6.900 mm  
Width: 8.400 mm  
Weight: 26.500 kg

### Buyer Information:

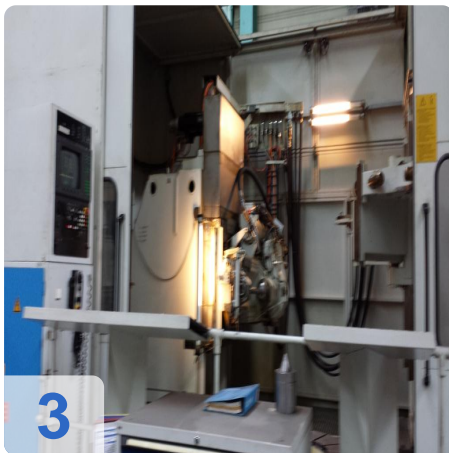
Condition: Like New  
Available: Sold  
Sold as:  
EXW (Ex Works - Incoterm)  
VAT: 19 %  
Buyers Premium: 16 %  
Location: Germany



# Asset-Trade

Assessment & Sale of Used Assets

## Images:



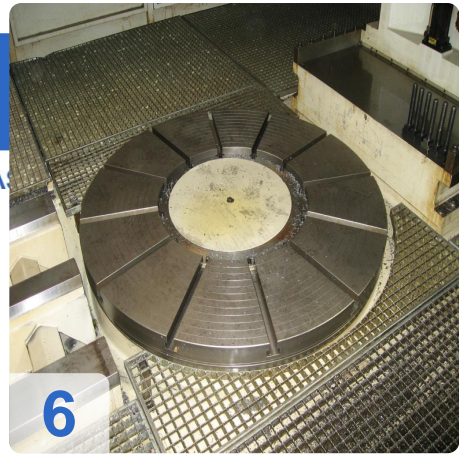




As

e

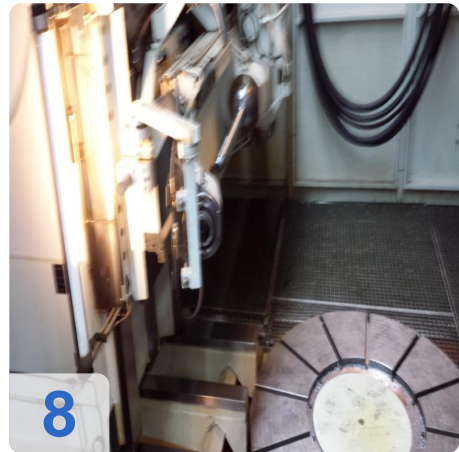
ssets



6



7



8



9



10



11

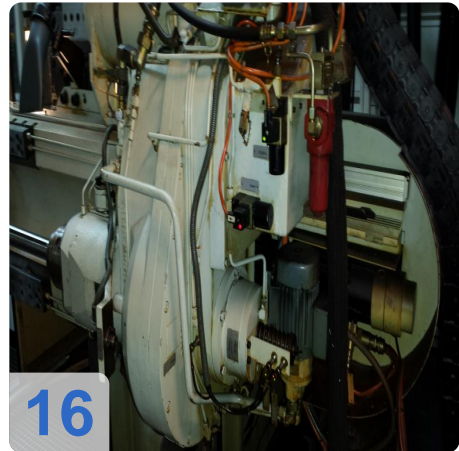
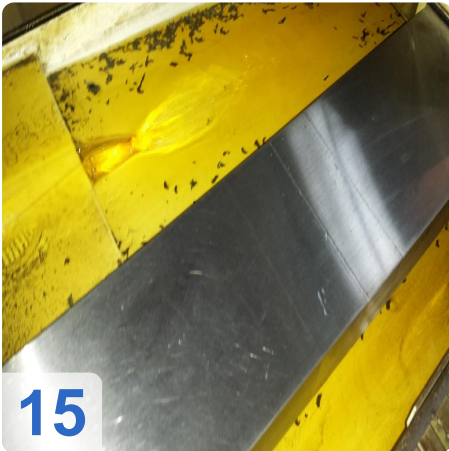
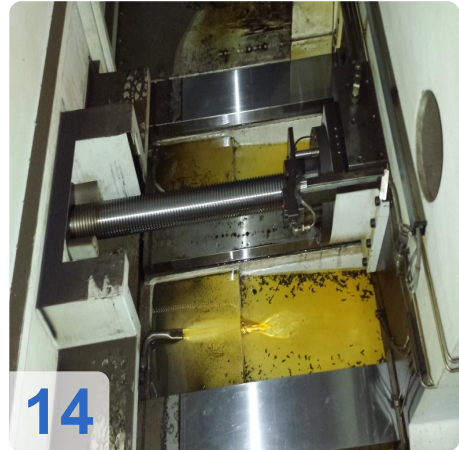
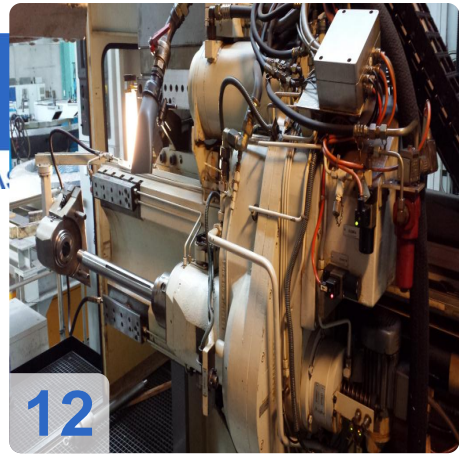
V 2  
Typ : F 1800 / 2000  
KW : 30 mm  
Tisch : 21480  
Maße : AD Verzahn = 2300



Asset-Trade

e

Assets







As

e

ssets



18



19



20



21



22



23

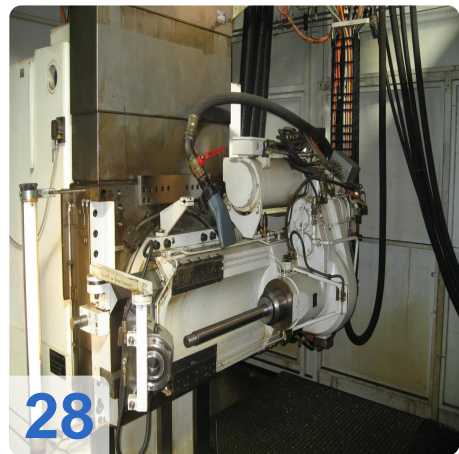




Asset-Trade

e

Assets

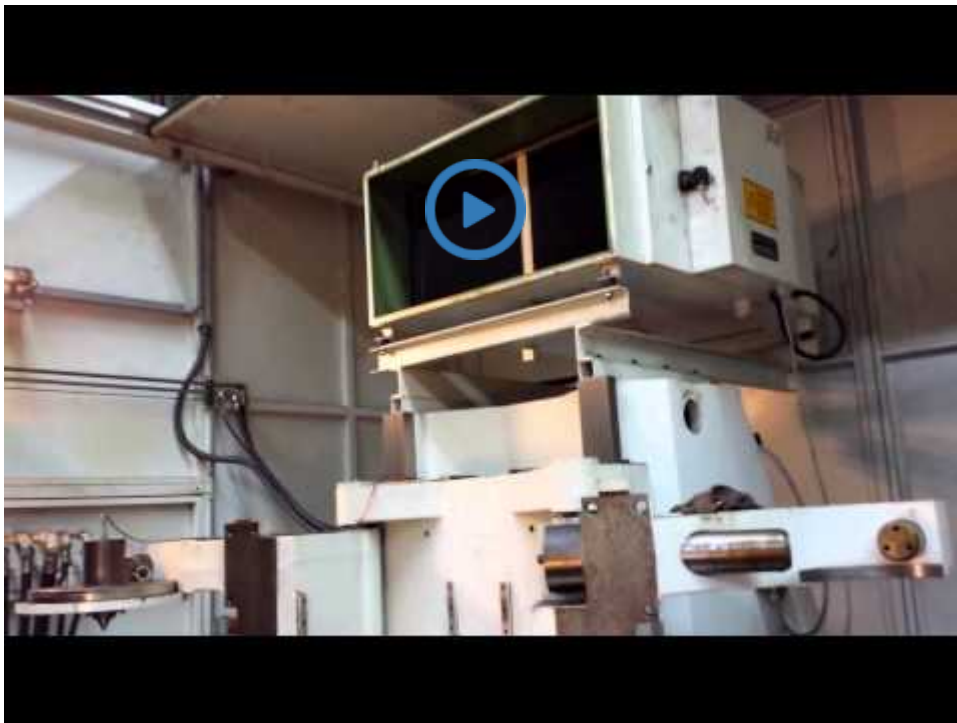




# Asset-Trade

Assessment & Sale of Used Assets

Video:





# Asset-Trade

Assessment & Sale of Used Assets



**Asset-Trade**

**Assessment and Sale of Used Assets world  
wide**

**Am Sonnenhof 16**

**47800 Krefeld**

**Germany**

**Tel.: +49 2151 32500 33**