

Image not found or type unknown



Ref. No.:

435-26081728

Overview and Technical Data:

CHIRON - FZ 12 W Vertical machining center

CHIRON

chiron



Year of Build:

Jan 1994

Description:

Used CHIRON FZ 12 W - Vertical machining centre

- SIEMENS Sinumerik 810
- X-axis 550 mm
- Y-axis 300 mm
- Z-axis 425 mm
- Size of table 2x á 660 x 350 mm
- Rapid traverse 40 m / min
- Spindle speed from 20 to 10.500 U / min
- Spindle drive 5,5 kW
- 12 station tool changer
- cooling System
- chip conveyor
- Operating voltage 400 V
- Maxim. Power consumption of the machine 18 kVA
- Size 1.50 x 3.00 x 2.30 m

Technical Data:

Technical Data:

Control:

[CNC](#)

[SIEMENS](#)

[SINUMERIK 810](#)

Spindle Speed:

10.500 rpm

Tool Capacity:

12 x

Travels:

X-Axis:

550 mm

Y-Axis:

300mm

Z-Axis:

425 mm

Dimensions and Weight:

Weight:

4.000 kg

Buyer Information:

Condition:

Normal wear

Availability:

Sold

Sold as:

EXW (Ex Works - Incoterm)

VAT:

19 %

Location:

Germany

Images:







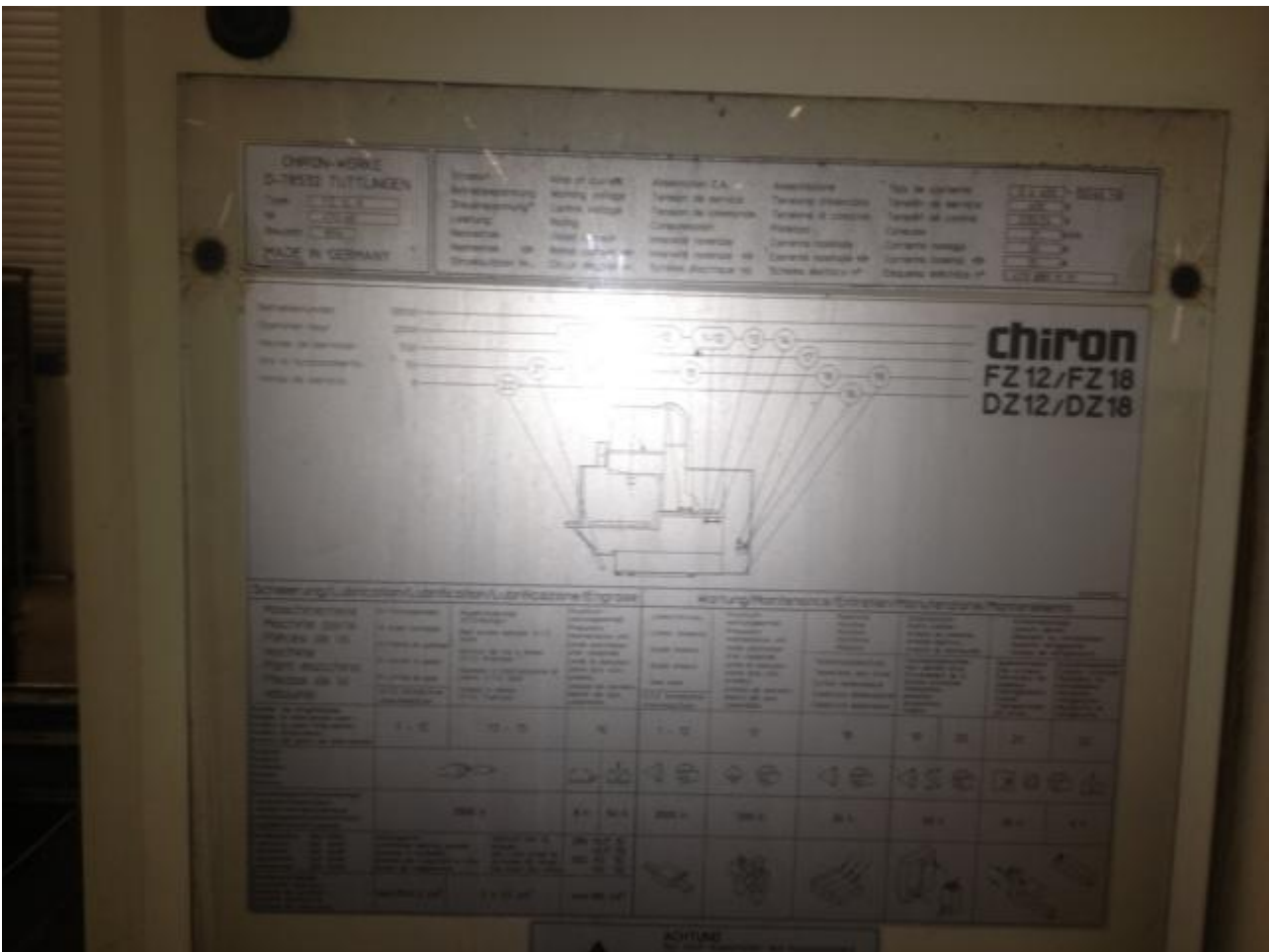
3



4



5



6







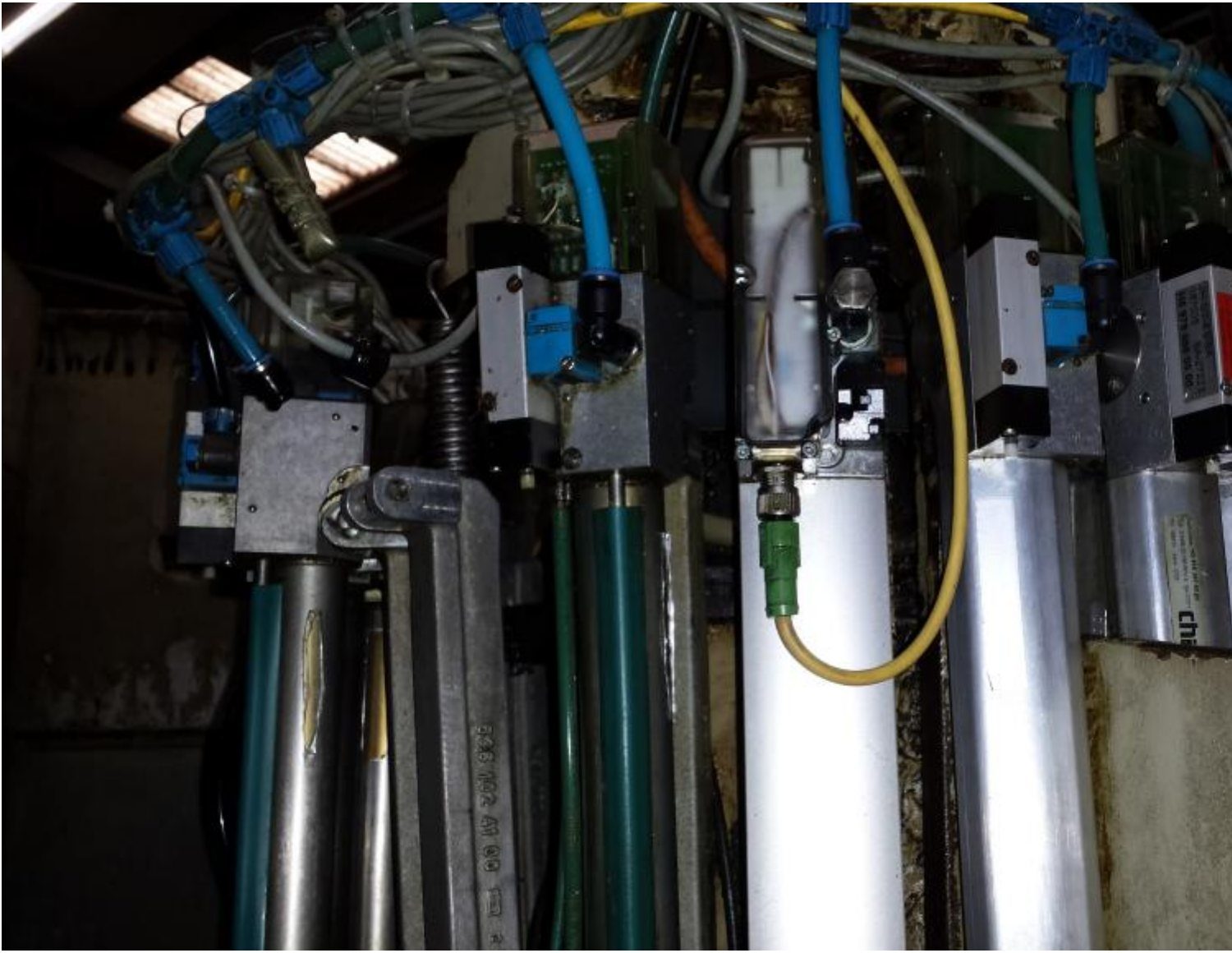


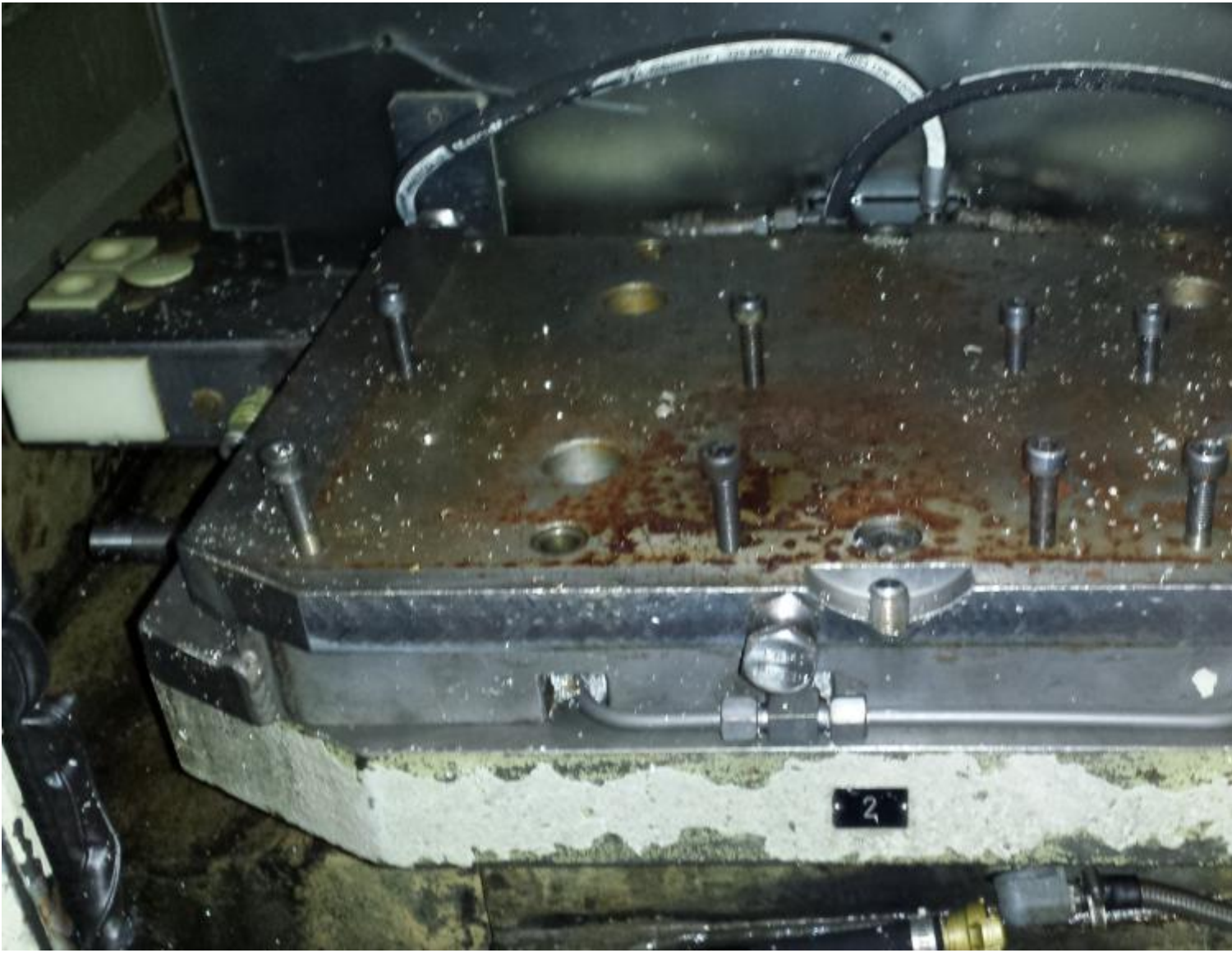






13





15





ELBARON
Elektrostatischer Luftreiniger

 **Hochspannung
Vorsicht!
Lebensgefahr**

ISI-INDUSTRIE-PRODUKTE GMBH
INDUSTRIEPARK-NORD, 53567 BUCHHOLZ-MENDEL

Modell	Serien-Nr.	Baujahr	G
500W 300	24072	25/94	
220 V~	50 Hz	0,35 kW	1,05 A

Tel. 02683/6087













Alimentazione

Tensione d'esercizio

Tensione di comando

Potenza

Corrente nominale

Corrente nominale \oplus

Schema elettrico n°

Tipo de corriente

Tensión de servicio

Tensión de control

Consumo

Corriente nominal

Corriente nominal \oplus

Esquema eléctrica n°

3 x 400 ~ 50/60

400 V

230/24 V

25 kVA

36 A

50 A

480 611 11 00

16

17

chirol
FZ 12/FZ
712/DZ

Alimentazione

Tensione d'esercizio

Tensione di comando

Potenza

Corrente nominale

Corrente nominale \oplus

Schema elettrico n°

Tipo de corriente

Tensión de servicio

Tensión de control

Consumo

Corriente nominal

Corriente nominal \oplus

Esquema eléctrico n°

3 x 400 ~

400 V

230/24 V

21 kVA

30 A

35 A

470 691 11 01

chir



27

Video:





Asset-Trade

Assessment and Sale of Used Assets world wide

Am Sonnenhof 16

47800 Krefeld

Germany

Tel.: +49 2151 32500 33

Fax.: +49 2151 65 29 22

Email: info@asset-trade.de

Web.: <https://www.asset-trade.de/en>

Ref. No.:

435-26081728

Overview and Technical Data:

CHIRON - FZ 12 W Vertical machining center

CHIRON

chiron

Year of Build:
Jan 1994

Description:

Used CHIRON FZ 12 W - Vertical machining centre

- SIEMENS Sinumerik 810
- X-axis 550 mm
- Y-axis 300 mm
- Z-axis 425 mm
- Size of table 2x á 660 x 350 mm
- Rapid traverse 40 m / min
- Spindle speed from 20 to 10.500 U / min
- Spindle drive 5,5 kW

- 12 station tool changer
- cooling System
- chip conveyor
- Operating voltage 400 V
- Maxim. Power consumption of the machine 18 kVA
- Size 1.50 x 3.00 x 2.30 m

Technical Data:

Technical Data:

Control:

[CNC](#)

[SIEMENS](#)

[SINUMERIK 810](#)

Spindle Speed:

10.500 rpm

Tool Capacity:

12 x

Travels:

X-Axis:

550 mm

Y-Axis:

300mm

Z-Axis:

425 mm

Dimensions and Weight:

Weight:

4.000 kg

Buyer Information:

Condition:

[Normal wear](#)

Availability:

[Sold](#)

Sold as:

[EXW \(Ex Works - Incoterm\)](#)

VAT:

[19 %](#)

Location:

Germany

Images:



1





3



4







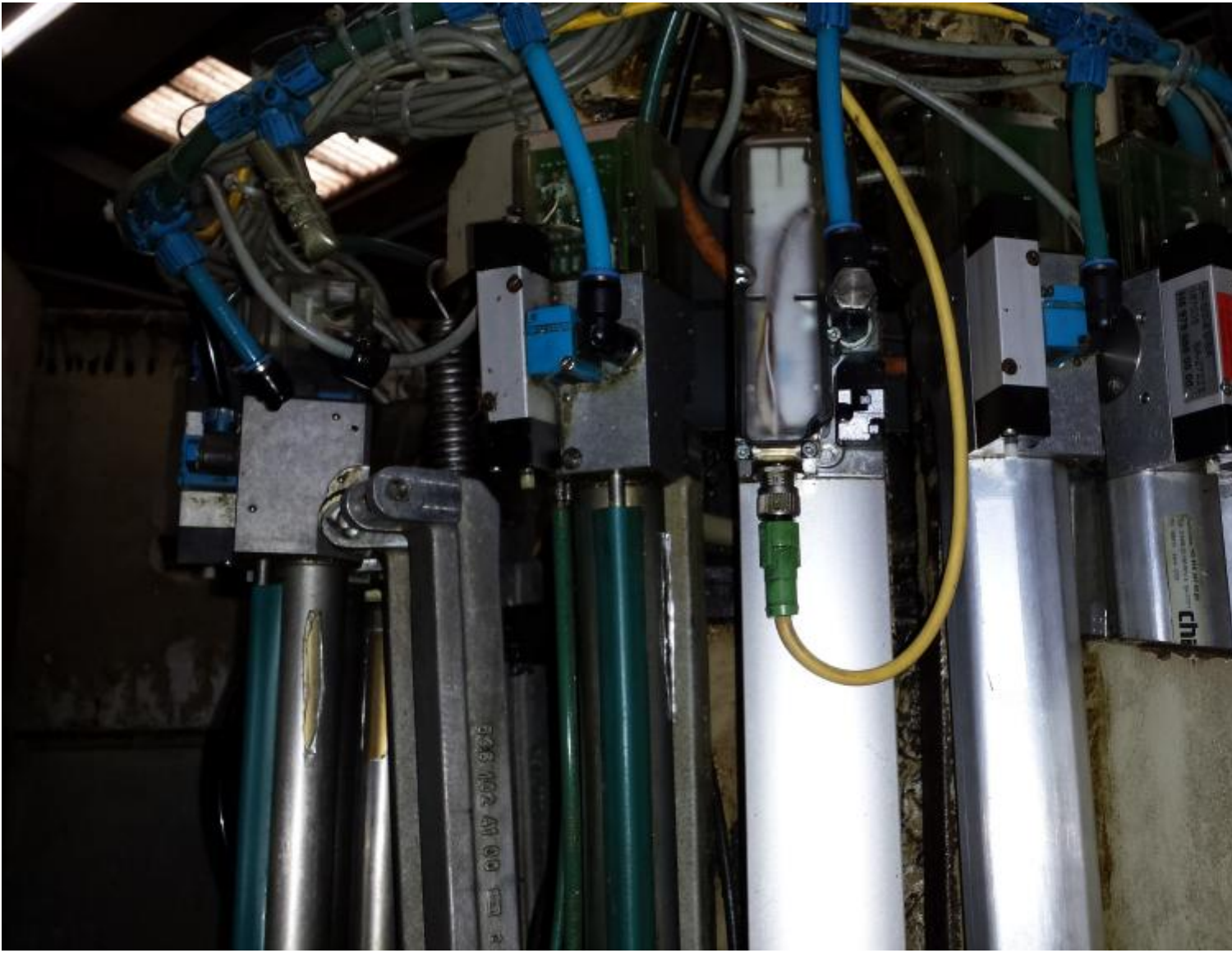








13





15





ELBARON
Elektrostatischer Luftreiniger

 **Hochspannung
Vorsicht!
Lebensgefahr**

ISI-INDUSTRIE-PRODUKTE GMBH
INDUSTRIEPARK-NORD, 53567 BUCHHOLZ-MENDEL

Modell	Serien-Nr.	Baujahr	G
500W 300	24072	25/94	
220 V~	50 Hz	0,35 kW	1,05 A

Tel. 02683/6087













Alimentazione

Tensione d'esercizio

Tensione di comando

Potenza

Corrente nominale

Corrente nominale \oplus

Schema elettrico n°

Tipo de corriente

Tensión de servicio

Tensión de control

Consumo

Corriente nominal

Corriente nominal \oplus

Esquema eléctrica n°

3 x 400 ~ 50/60

400 V

230/24 V

25 kVA

36 A

50 A

480 611 11 00

16

17

chirol
FZ 12/FZ
712/DZ

Alimentazione

Tensione d'esercizio

Tensione di comando

Potenza

Corrente nominale

Corrente nominale \oplus

Schema elettrico n°

Tipo de corriente

Tensión de servicio

Tensión de control

Consumo

Corriente nominal

Corriente nominal \oplus

Esquema eléctrico n°

3 x 400

400

230/24

21

30

35

470 691 11 01

chir



27

Video:





Asset-Trade

Assessment and Sale of Used Assets world wide

Am Sonnenhof 16

47800 Krefeld

Germany

Tel.: +49 2151 32500 33

Fax.: +49 2151 65 29 22

Email: info@asset-trade.de

Web.: <https://www.asset-trade.de/en>

Generated on 31.05.2026

© Copyright 2026 - [Asset-Trade](#)

Page