

Image not found or type unknown



Ref. No.:
518-05020935

Overview and Technical Data:

GILDEMEISTER - Twin 65 L with IEMCA Bar Loader

DMG GILDEMEISTER



DMG

Year of Build:
Jan 2007

Description:

Used DMG GILDEMEISTER Twin 65 - I - CNC twin spindle turning center :

ON 16.869h / Spindel 9.614 h

- CNC control 840D powerline
- 2x sleds
- 2x 12 -fold star revolvers
- Main and counter spindle
- 2x driven tool
- 2x C - axes
- Y-axis mm ± 30
- Chip Conveyor
- Spindle distance mm 580
- chuck diameter mm 130 / 140
- Max. bar diameter mm 65

- Main drive spindle 1, 2 (100% DC) kW 15, 15
- Slide travel (X1 / X2) cross-wise mm 220 / 120
- Slide travel (Z1 / Z2) longitudinal mm 320 / 345
- Cross stroke, spindle 2 mm 145

Further Technical Data:

- Counterspindle to TWIN 65-1 integrated spindle motor ISM 42 with synchronous technology , air cooled
- Power 20/26 , 5 kW (100% / 40% ED)
- Torque 112/150 Nm (100% / 40%)
- Speed ??, max 5500 min-1
- Partially hollow clamping device
- Inside Rod-046 x 715 deep
- C- axis and spindel breake (hydr.)
- mounted tailstock stroke = 230 mm
- Tailstock force = 300 daN
- Coolant device 8/20 bar / 600l

IEMCA-MASTER 880 MP - Bar Loader

- max. rod length 3.180 mmmaks. weight 3,5 kg (4.5 kg TWIN 65)
-

TWIN 65 | More room for more productivity

Following the success of the TWIN 32/42, GILDEMEISTER now also offers the acclaimed work area design of the counter-spindle/tailstock combination for bar diameters of up to 65 mm. Simultaneously, the new frame size now accommodates a CNC-driven b-axis in the upper revolver. In combination with the y-axis and driven tools, this configuration now permits the machining of slanted bores, curved planes, and even complicated milling contours. Furthermore, the large TWIN machines convince because of their reduced idle times, attested to by accelerations of up to 0.7 m/s², fast rapid traverses, quickly shifting revolvers, and the most modern synchronized spindle motors.

Highlights:

- Modular custom TWIN building blocks with bar diameters up to 65 mm
- C-traverse counter spindle/tailstock combination adjustable in any position
- Also with CNC-controlled B-axis
- The entire product line is also available with a Y-axis
- The newest generation of Siemens 840D controls
- Simple and fast programming with the programming system DMG Programmer 3D Turning (optional)
- Demand-oriented automation solutions

Technical Data:

Technical Data:

Control:

[SINUMERIK 840D](#)

Tailstock:

No

Bezel:

No

Dimensions and Weight:

Weight:
6000 kg

Buyer Information:

Condition:
[Very good condition](#)

Available:

[Sold](#)

Sold as:

[EXW \(Ex Works - Incoterm\)](#)

VAT:

[21 %](#)

Buyers Premium:

[15 %](#)

Location:

Denmark

Images:

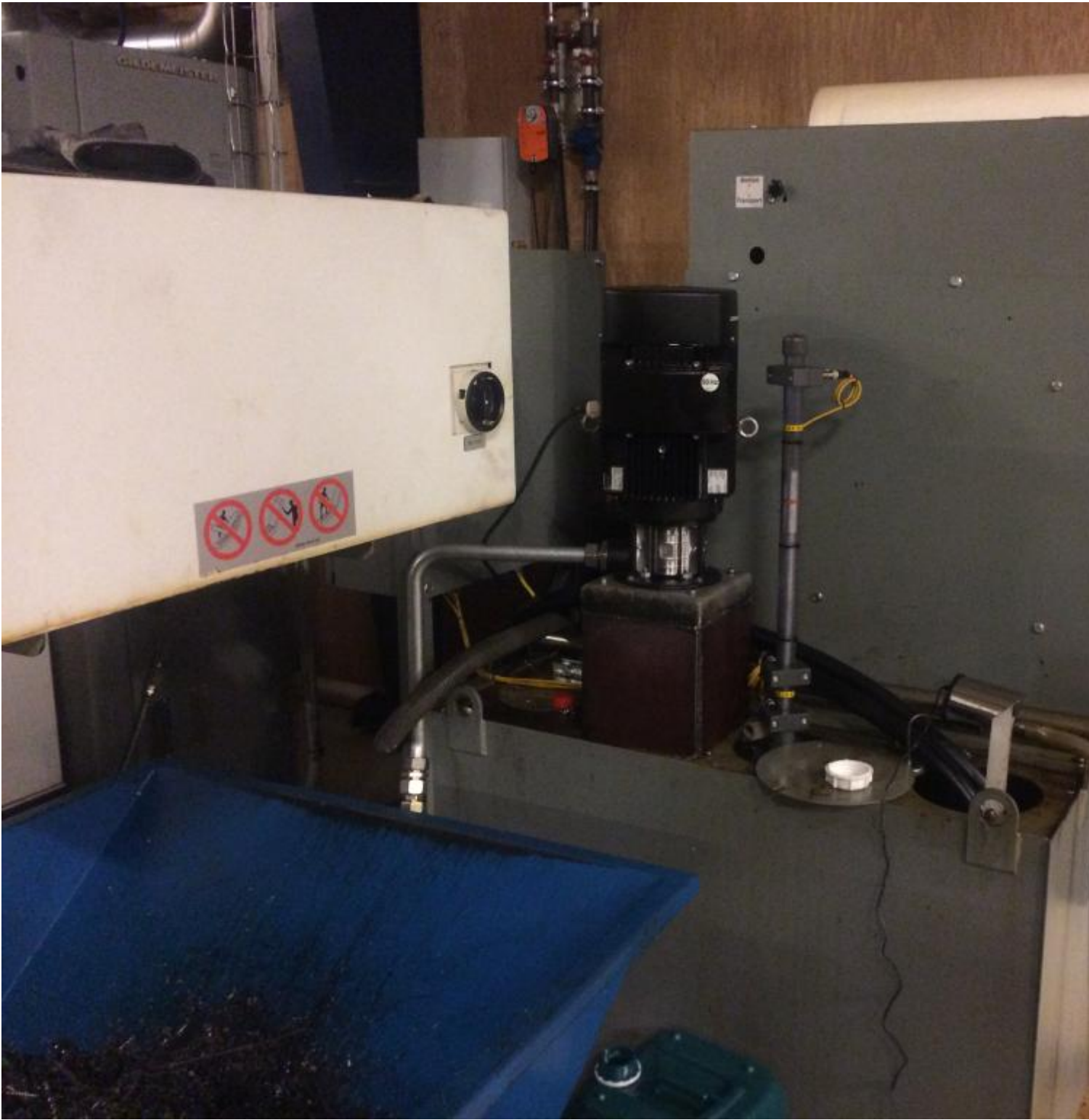


1

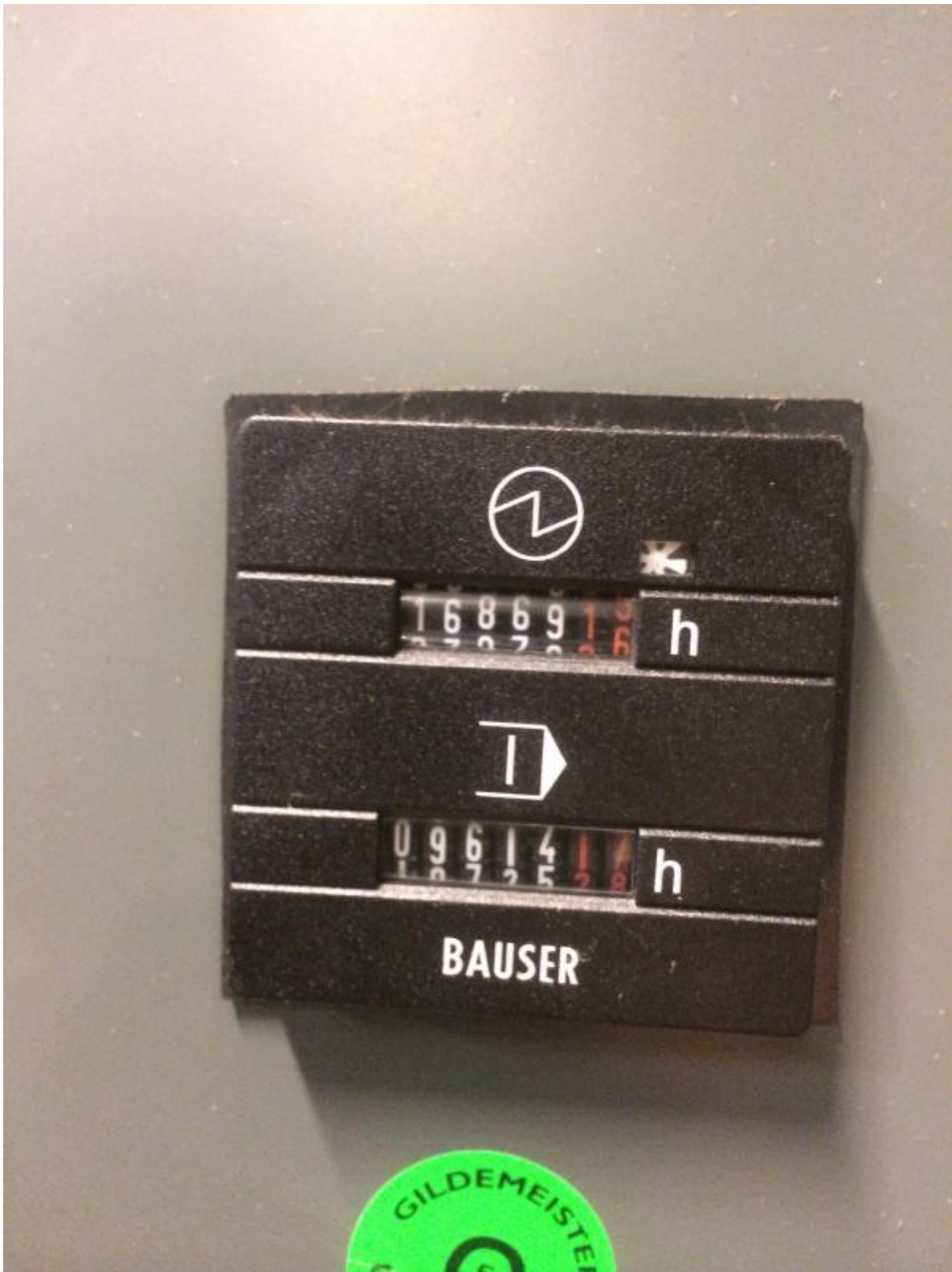






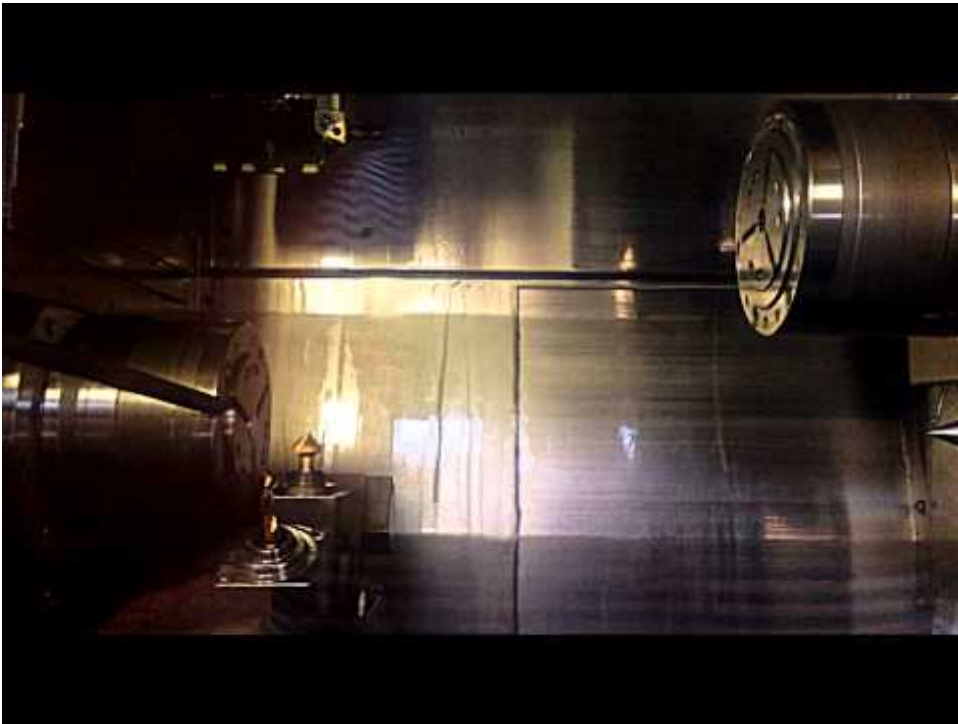






7

Video:



Asset-Trade

Assessment and Sale of Used Assets world wide

Am Sonnenhof 16

47800 Krefeld

Germany

Tel.: +49 2151 32500 33

Fax.: +49 2151 65 29 22

Email: info@asset-trade.de

Web.: <https://www.asset-trade.de/en>

Ref. No.:
518-05020935

Overview and Technical Data:

GILDEMEISTER - Twin 65 L with IEMCA Bar Loader

DMG GILDEMEISTER



DMG

Year of Build:
Jan 2007

Description:

Used DMG GILDEMEISTER Twin 65 - I - CNC twin spindle turning center :

ON 16.869h / Spindel 9.614 h

- CNC control 840D powerline
- 2x sleds
- 2x 12 -fold star revolvers

- Main and counter spindle
- 2x driven tool
- 2x C - axes
- Y-axis mm \pm 30
- Chip Conveyor
- Spindle distance mm 580
- chuck diameter mm 130 / 140
- Max. bar diameter mm 65
- Main drive spindle 1, 2 (100% DC) kW 15, 15
- Slide travel (X1 / X2) cross-wise mm 220 / 120
- Slide travel (Z1 / Z2) longitudinal mm 320 / 345
- Cross stroke, spindle 2 mm 145

Further Technical Data:

- Counterspindle to TWIN 65-1 integrated spindle motor ISM 42 with synchronous technology , air cooled
- Power 20/26 , 5 kW (100% / 40% ED)
- Torque 112/150 Nm (100% / 40%)
- Speed ??, max 5500 min-1
- Partially hollow clamping device
- Inside Rod-046 x 715 deep
- C- axis and spindel breake (hydr.)
- mounted tailstock stroke = 230 mm
- Tailstock force = 300 daN
- Coolant device 8/20 bar / 600l

IEMCA-MASTER 880 MP - Bar Loader

- max. rod length 3.180 mmmaks. weight 3,5 kg (4.5 kg TWIN 65)

TWIN 65 | More room for more productivity

Following the success of the TWIN 32/42, GILDEMEISTER now also offers the acclaimed work area design of the counter-spindle/tailstock combination for bar diameters of up to 65 mm. Simultaneously, the new frame size now accommodates a CNC-driven b-axis in the upper revolver. In combination with the y-axis and driven tools, this configuration now permits the machining of slanted bores, curved planes, and even complicated milling contours. Furthermore, the large TWIN machines convince because of their reduced idle times, attested to by accelerations of up to 0.7 m/s², fast rapid traverses, quickly shifting revolvers, and the most modern synchronized spindle motors.

Highlights:

- Modular custom TWIN building blocks with bar diameters up to 65 mm
- C-traverse counter spindle/tailstock combination adjustable in any position
- Also with CNC-controlled B-axis
- The entire product line is also available with a Y-axis
- The newest generation of Siemens 840D controls
- Simple and fast programming with the programming system DMG Programmer 3D Turning (optional)
- Demand-oriented automation solutions

Technical Data:

Technical Data:

Control:

[SINUMERIK 840D](#)

Tailstock:

No

Bezel:

No

Dimensions and Weight:

Weight:

6000 kg

Buyer Information:

Condition:

[Very good condition](#)

Available:

[Sold](#)

Sold as:

[EXW \(Ex Works - Incoterm\)](#)

VAT:

[21 %](#)

Buyers Premium:

[15 %](#)

Location:

Denmark

Images:

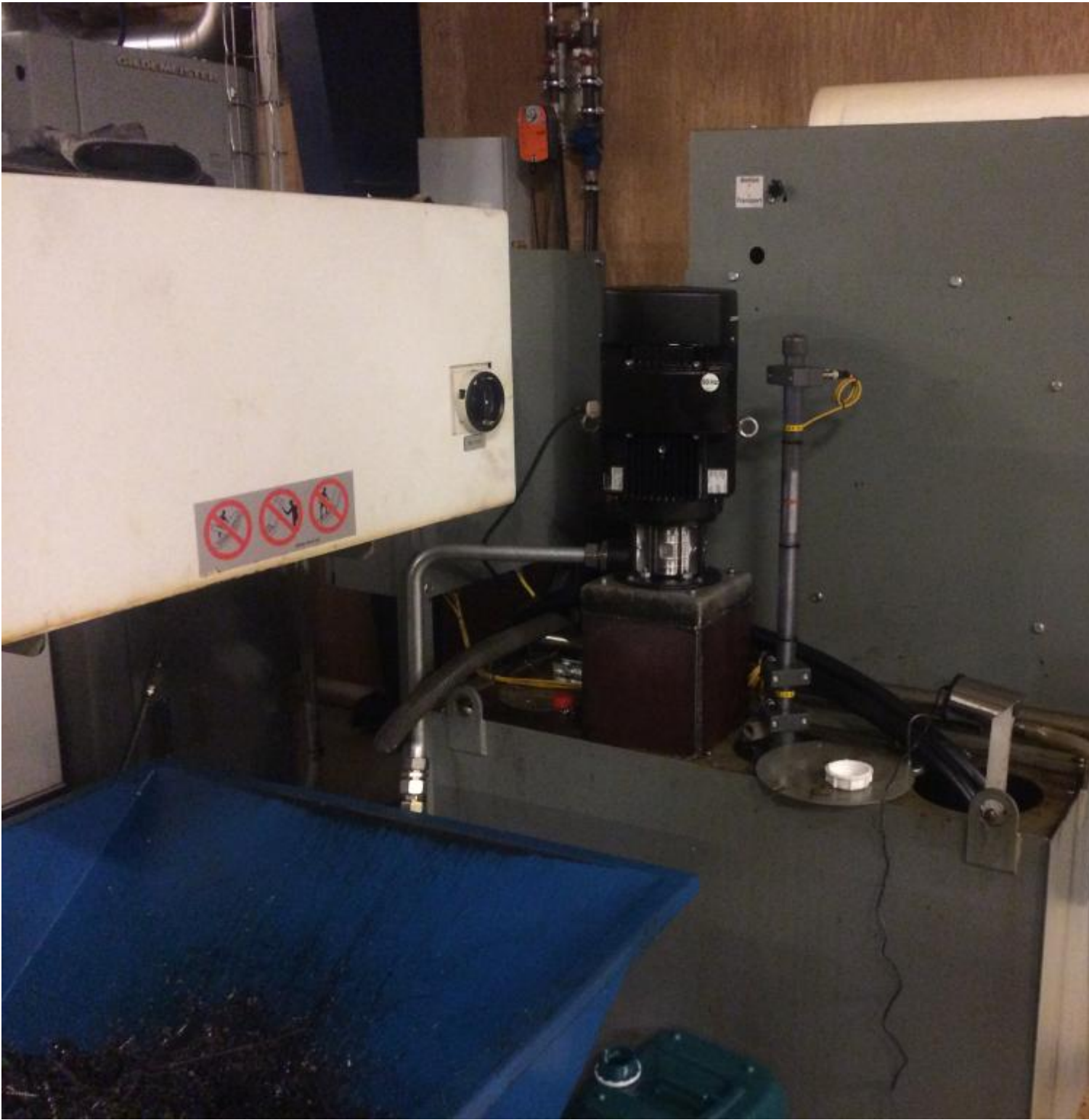


1

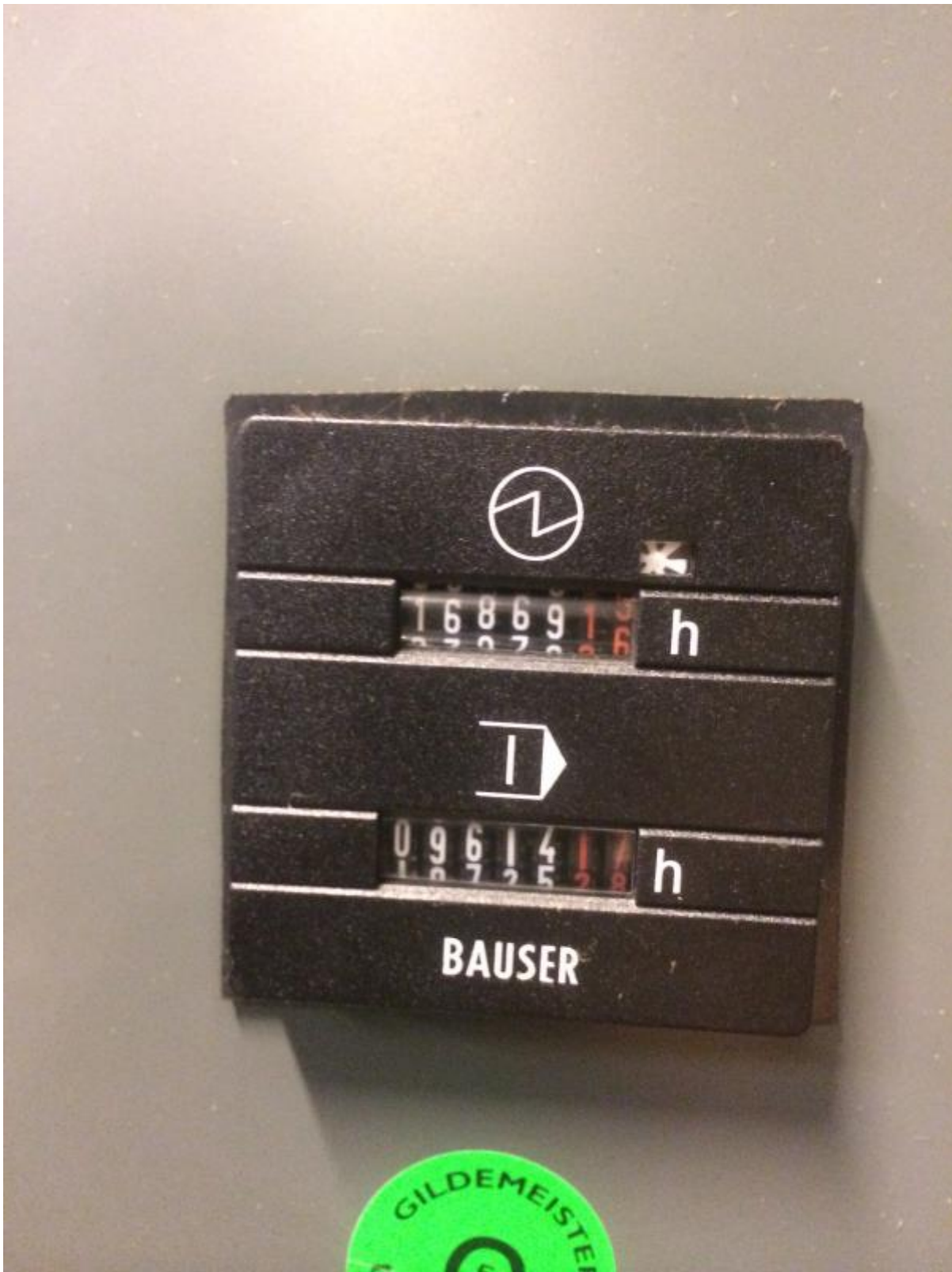






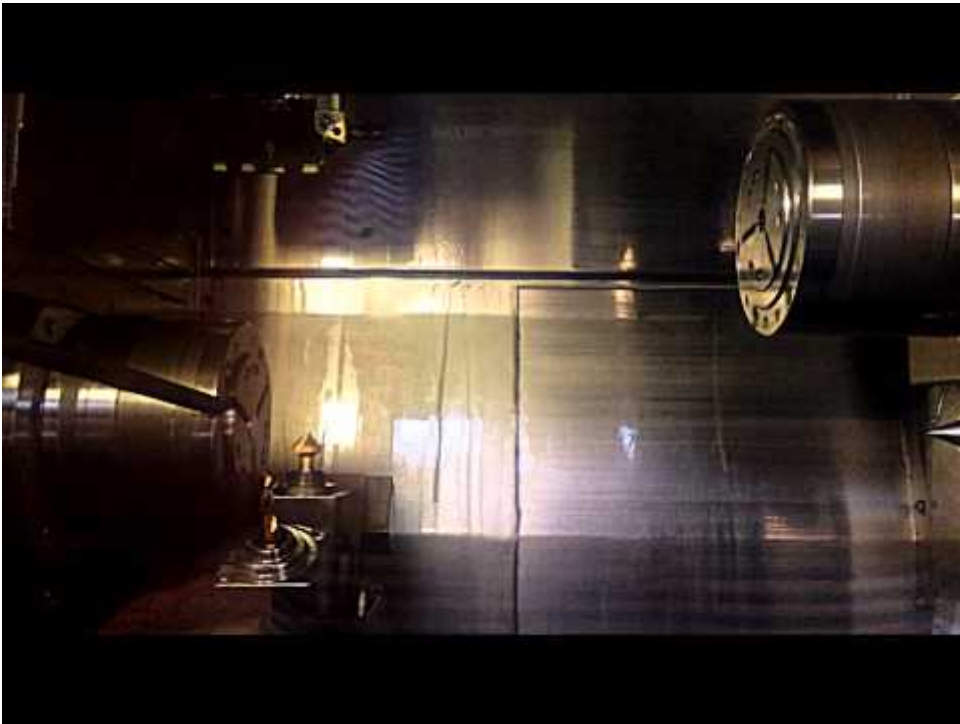






7

Video:



Asset-Trade

Assessment and Sale of Used Assets world wide

Am Sonnenhof 16

47800 Krefeld

Germany

Tel.: +49 2151 32500 33

Fax.: +49 2151 65 29 22

Email: info@asset-trade.de

Web.: <https://www.asset-trade.de/en>

Generated on 28.05.2026

© Copyright 2026 - [Asset-Trade](#)

Page