

Image not found or type unknown



Ref. No.:

733-08151621

## **Overview and Technical Data:**

# **BURKHARDT + WEBER - MC 80 Horizontal Machining Center**

## **BURKHARDT + WEBER**



Year of Build:

Jan 1997

## **Description:**

# **Used BURKHARDT + WEBER Horizontal-Machining-Center MC 80**

## Technical Details

Horizontal-Machining-Center with Twin Pallet-Changer, 280-Position ATC, RENISHAW 3D Tool, Workpiece Measuring Device, Through Spindle Coolant and Digital Drives

- CNC Control SIEMENS SINUMERIK 840 C
- Travels X/Y/Z 1.600 / 1.000 / 1.000 mm
- B-Axes NC-Rotary Table / 360.000 x 0,001 deg
- Feeds X / Y / Z 1 – 25.000 mm/min
- Spindel 20 – 6.000 rpm
- Tool Adapter / Length SK 50 / 750 mm
- Numbers of pallets 2
- Max dimension of clamping unit dia 800 x 1.000 mm
- Tool Changer Capacity 280 Tools
- Coolant Equipment 160L/Min at 2,5 bar + 30L/Min at 20/50bar, Bandfilter, Re-Cooler
- Total power requirement 65 kW
- Dimensions (l x w x h) approx. 14000 x 10000 x 4000 mm

## **Technical Data:**

## **Technical Data:**

Control:

[SINUMERIK 840C](#)

Spindle Speed:

6.000 rpm

Tool Capacity:

280 x

## **Travels:**

X-Axis:

1.600 mm

Y-Axis:

1.000mm

Z-Axis:

1.000 mm

## **Dimensions and Weight:**

Weight:

30.000 kg

## **Buyer Information:**

Condition:

[Very good condition](#)

Availability:

[Sold](#)

Sold as:

[Free Loaded on Truck \(LOT\)](#)

VAT:

[19 %](#)

Buyers Premium:

[16 %](#)

Location:

Germany

## **Images:**



1





3



4

BURKHARDT+WEBER BW

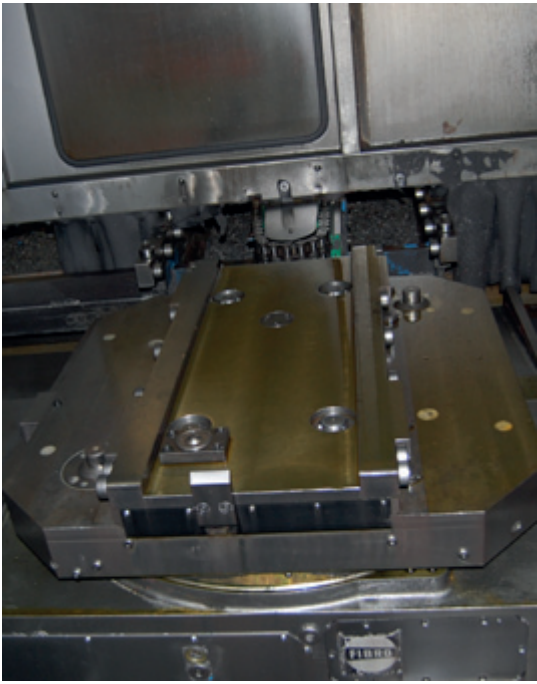


BURKHARDT+WEBER BW

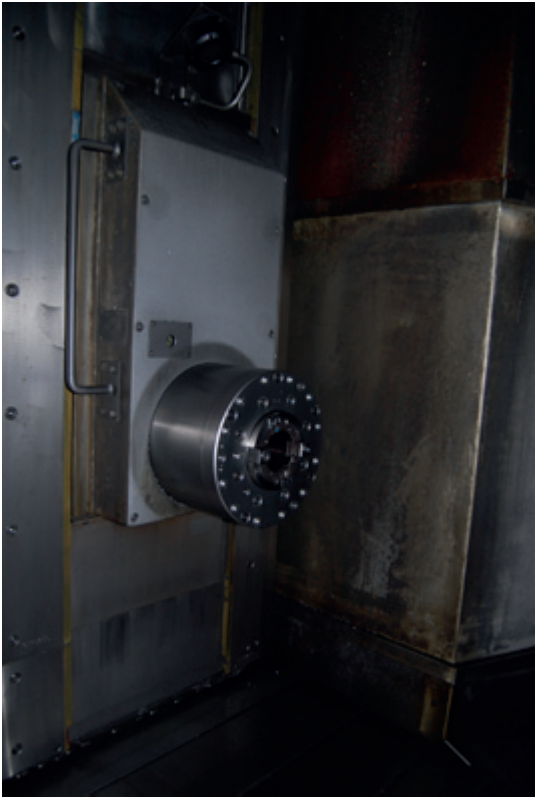
Typ: MC 80  
Auftrag:  
Lieferdatum: 97  
D-72760 Reutlingen  
Made in Germany

### Elektrische Ausrüstung

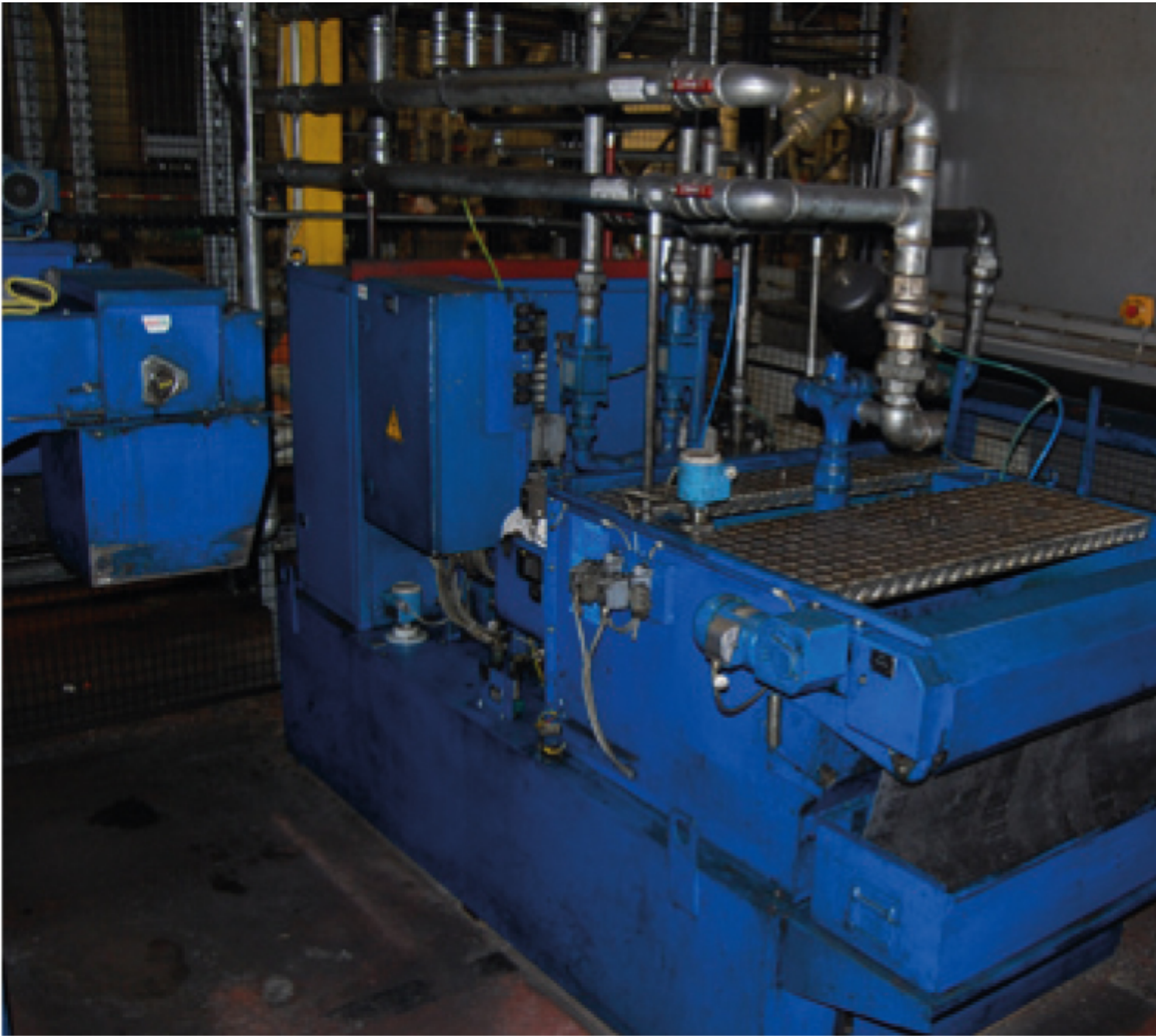
Stromlaufplan  
Bemessungsspannung 3x 400 V 50 1/s  
Steuerspannung AC 230 DC 24 V  
Vollaststrom 130 A  
Bemessungsstrom Hauptantrieb 80 A  
Anschlußwert 75 KVA  
Zuleitung (Cu) min. 70 mm<sup>2</sup>  
Hauptsicherung träge 160 A



6



7



8









Asset-Trade

Assessment and Sale of Used Assets world wide

Am Sonnenhof 16

47800 Krefeld

Germany

Tel.: +49 2151 32500 33

Fax.: +49 2151 65 29 22

Email: [info@asset-trade.de](mailto:info@asset-trade.de)

Web.: <https://www.asset-trade.de/en>

Ref. No.:  
733-08151621

**Overview and Technical Data:**

**BURKHARDT + WEBER - MC 80 Horizontal Machining Center**



Year of Build:  
Jan 1997

## **Description:**

**Used BURKHARDT + WEBER Horizontal-Machining-Center MC  
80**

Technical Details

## Horizontal-Machining-Center with Twin Pallet-Changer, 280-Position ATC, RENISHAW 3D Tool, Workpiece Measuring Device, Through Spindle Coolant and Digital Drives

- CNC Control SIEMENS SINUMERIK 840 C
- Travels X/Y/Z 1.600 / 1.000 / 1.000 mm
- B-Axes NC-Rotary Table / 360.000 x 0,001 deg
- Feeds X / Y / Z 1 – 25.000 mm/min
- Spindel 20 – 6.000 rpm
- Tool Adapter / Length SK 50 / 750 mm
- Numbers of pallets 2
- Max dimension of clamping unit dia 800 x 1.000 mm
- Tool Changer Capacity 280 Tools
- Coolant Equipment 160L/Min at 2,5 bar + 30L/Min at 20/50bar, Bandfilter, Re-Cooler
- Total power requirement 65 kW
- Dimensions (l x w x h) approx. 14000 x 10000 x 4000 mm

### Technical Data:

### Technical Data:

Control:

[SINUMERIK 840C](#)

Spindle Speed:

6.000 rpm

Tool Capacity:

280 x

### Travels:

X-Axis:

1.600 mm

Y-Axis:

1.000mm

Z-Axis:

1.000 mm

### Dimensions and Weight:

Weight:

30.000 kg

### Buyer Information:

Condition:

[Very good condition](#)

Availability:

[Sold](#)

Sold as:

[Free Loaded on Truck \(LOT\)](#)

VAT:

[19 %](#)

Buyers Premium:

[16 %](#)

Location:

Germany

**Images:**



1







4

BURKHARDT+WEBER BW

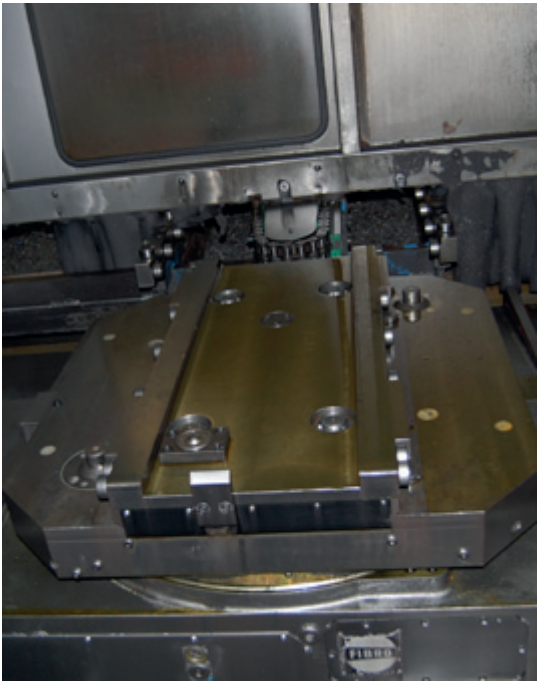
CE

BURKHARDT+WEBER BW

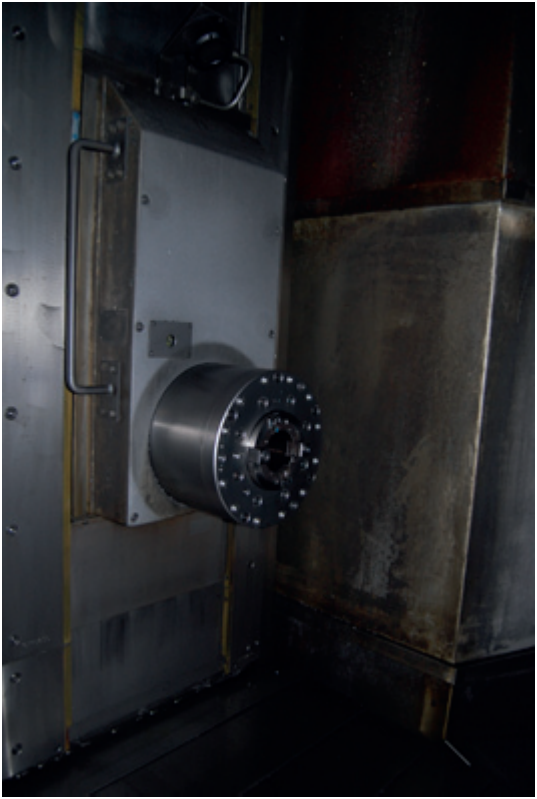
Typ: MC 80  
Auftrag:   
Lieferdatum: 97  
D-72760 Reutlingen  
Made in Germany

### Elektrische Ausrüstung

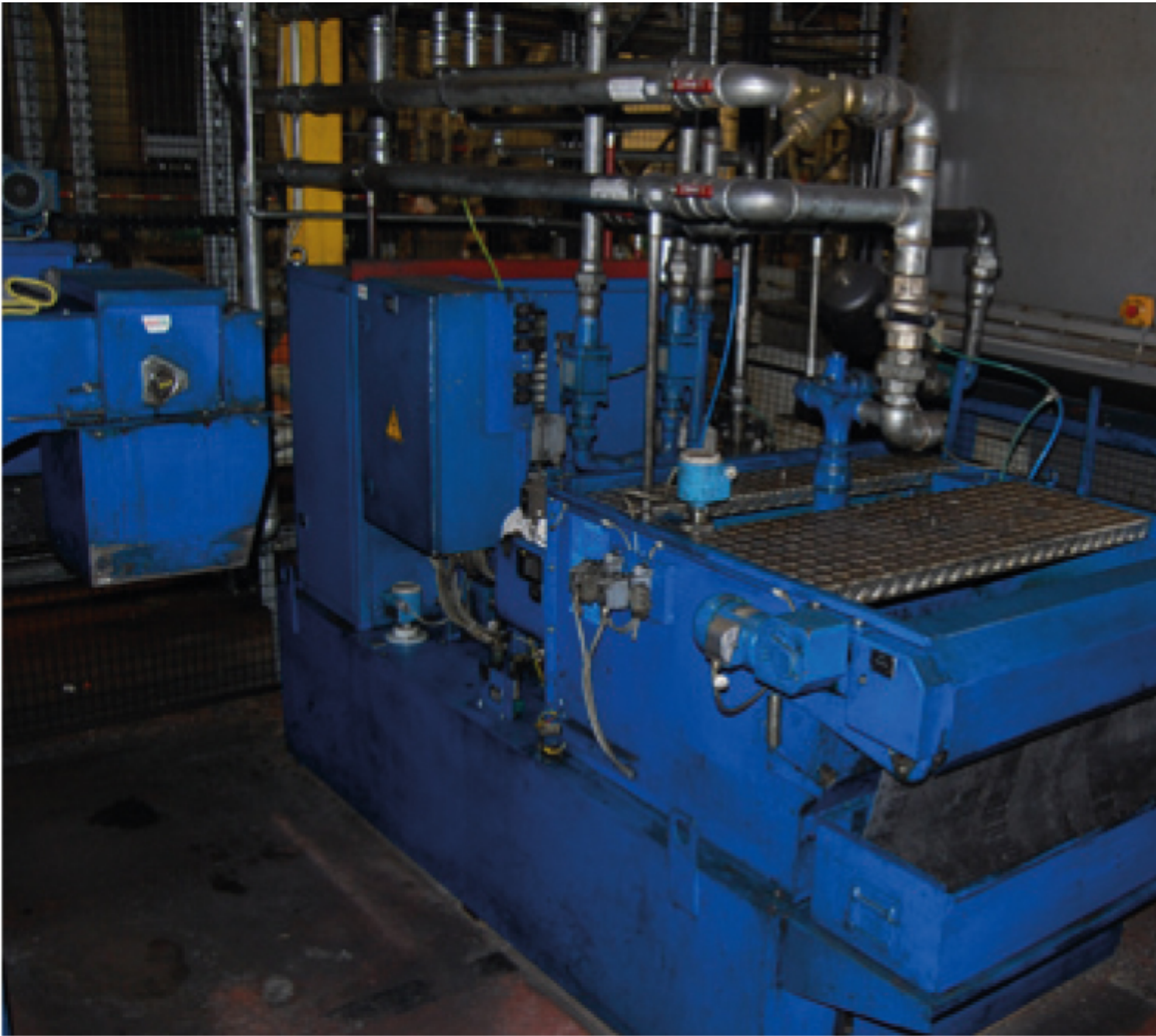
Stromlaufplan   
 Bemessungsspannung 3x 400 V 50 1/s  
 Steuerspannung AC 230 DC 24 V  
 Vollaststrom 130 A  
 Bemessungsstrom Hauptantrieb 80 A  
 Anschlußwert 75 KVA  
 Zuleitung (Cu) min. 70 mm<sup>2</sup>  
 Hauptsicherung träge 160 A



6



7



8









Asset-Trade

Assessment and Sale of Used Assets world wide

Am Sonnenhof 16

47800 Krefeld

Germany

Tel.: +49 2151 32500 33

Fax.: +49 2151 65 29 22

Email: [info@asset-trade.de](mailto:info@asset-trade.de)

Web.: <https://www.asset-trade.de/en>

Generated on 05.04.2026

© Copyright 2026 - [Asset-Trade](#)

Page