

Image not found or type unknown



Ref. No.:

741-1011160904

Overview and Technical Data:

CHIRON - Mill 800 5 Axis

CHIRON

chiron



Year of Build:

Jan 2006

Description:

Used CHIRON Mill 800 5- Axis Mill Center

New Spindle in 9/2016

Overhauled for about 30.000 Euro like tool changer

Operating Hours 46.200 Hours

Spindle hours <500 (Total counter 26.262 hrs.)

Technical Data:

- Siemens 840D control unit
- X = 800 mm
- Y = 630mm
- Z = 550mm
- Spindle speed 12,000 rpm
- Internal coolant with 20 bar
- 3-D Measuring probe
- 40 tools holder
- Knoll Chip Conveyor

Technical Data:

Technical Data:

Control:

[SINUMERIK 840D](#)

Machine Hours:

46.200 hrs.

Spindle Hours:

500 hrs.

Spindle Speed:

12.000 rpm

Tool Capacity:

40 x

Travels:

X-Axis:

800 mm

Y-Axis:

630mm

Z-Axis:

550 mm

Dimensions and Weight:

Height:
2.990 mm
Width:
2.730 mm
Length:
5.354 mm
Weight:
8.600 kg

Buyer Information:

Condition:
[Very good condition](#)
Availability:
[Sold](#)
Sold as:
[EXW \(Ex Works - Incoterm\)](#)
VAT:
[19 %](#)
Location:
Germany

Images:







SIEMENS

POWER TEMP

SINUMERIK

Maschine	MILL HS	AUTO	VMPF.DIR
Kanal aktiv			287957A2.MPF
700054 WARTUNG VORBEREITEN			ROV
WKS	Position	Restweg	Masterspindel S1
X	8.0000 mm	0.0000	Ist 3999.939 U/min
Y	-15.5000 mm	0.0000	Soll 4000.000 U/min
Z	10.0000 mm	0.0000	Pos 0 grad
A	0.0000 grad	0.0000	Leistung 100.0 %
C	0.0000 grad	0.0000	Leistung 2%
Aktueller Satz CMAVGG82.SPF			Vorschub [mm/min]
G4 F=R4			Ist 0.0000 100.0 %
G0 G603 Z=R10			Soll 0.0000
ret			Werkzeug
			15 D1 vorangewähltes Werkzeug.
			15 G40 G40
DRF Verschiebung	Programm Beeinfl.	Satz-Suchlauf	Handrad
Programm Korrektur	Programm Übersicht		

Navigation buttons: Home, Left, Right, Stop, M, and a numeric keypad.

QWERTY keyboard layout with function keys on the right side.

Control panel with buttons for Start/Cancel, Hold, Alarm, Stop/Cancel, Next/Write, Page Up, Enter, Program, Test/Off, Prog. Stop, End, Page Down, Select, Del, Next/Start, and a yellow emergency stop button.

Bottom control panel with buttons for [VAR], [D-], [D+], [100%], [D-], [D+], [X], [Y], [Z], and a red emergency stop handle.

Kanal RESET

510009 ↓

SCHUTZEINRICHTUNG NICHT

chiron

gesamte CMDA

Hauptschalter eingeschaltet

Maschine komplett eingeschaltet (+g)

BA-Automatik_NC-Läuft (LED) (= Produktion)

Hauptspindeldrehzahl läuft

NC-Läuft (LED)_VS-Korrektur < 100%

NC-Läuft (LED)_VS-Korrektur = 0% oder

Maschine wartet auf Beladung

NC-Alarm >15 s

PLC-Alarm >15 s

1 Maschinensteuerung

Stückzahl_AF-1

69

Stückzahl_AF-2

Stückzahl 1.Schicht

27

Stückzahl 2.Schicht

30

Stückzahl 3.Schicht

11

CMDA

Tag_x

CMDA

Monat

CMDA

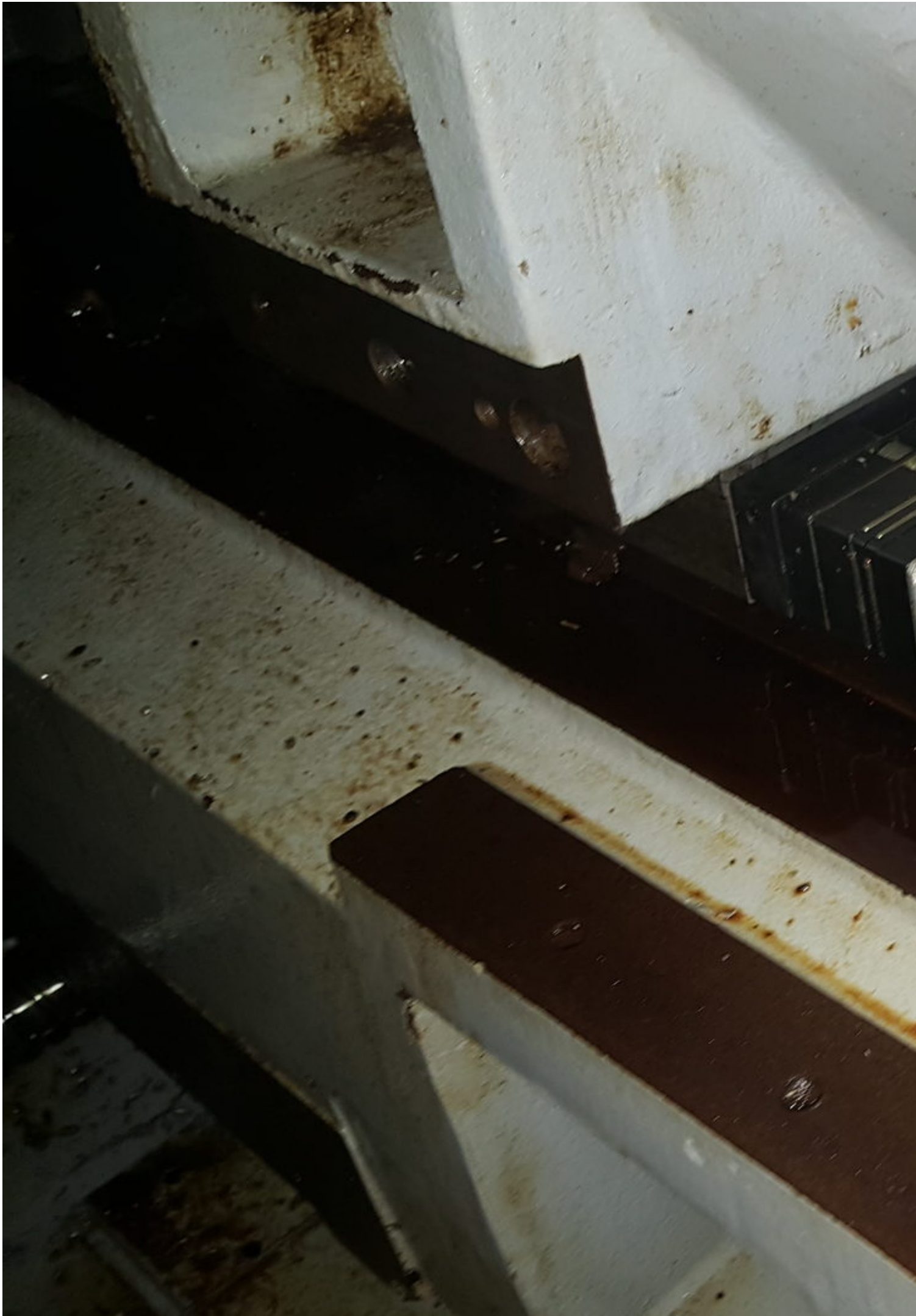
Gesamt







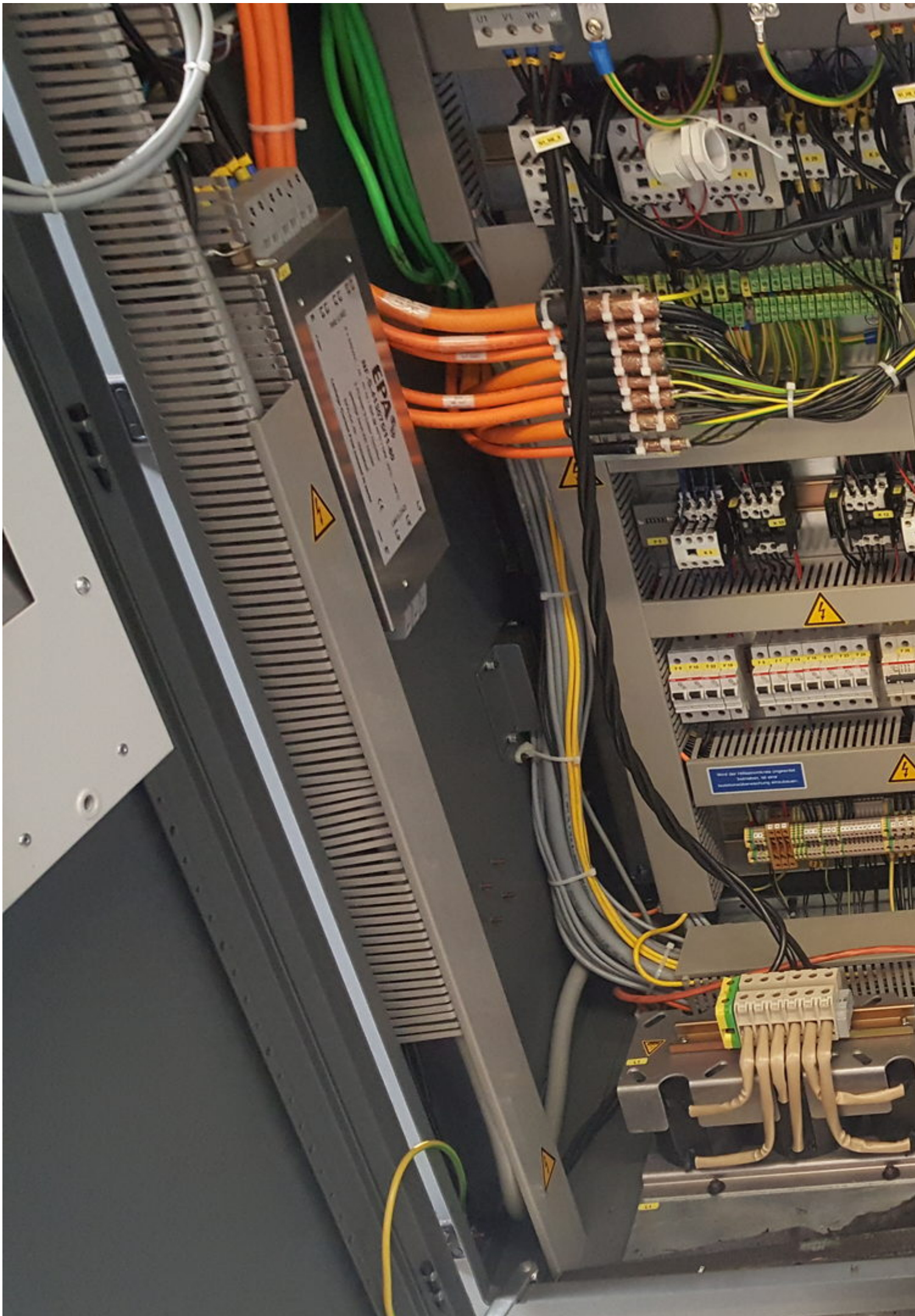




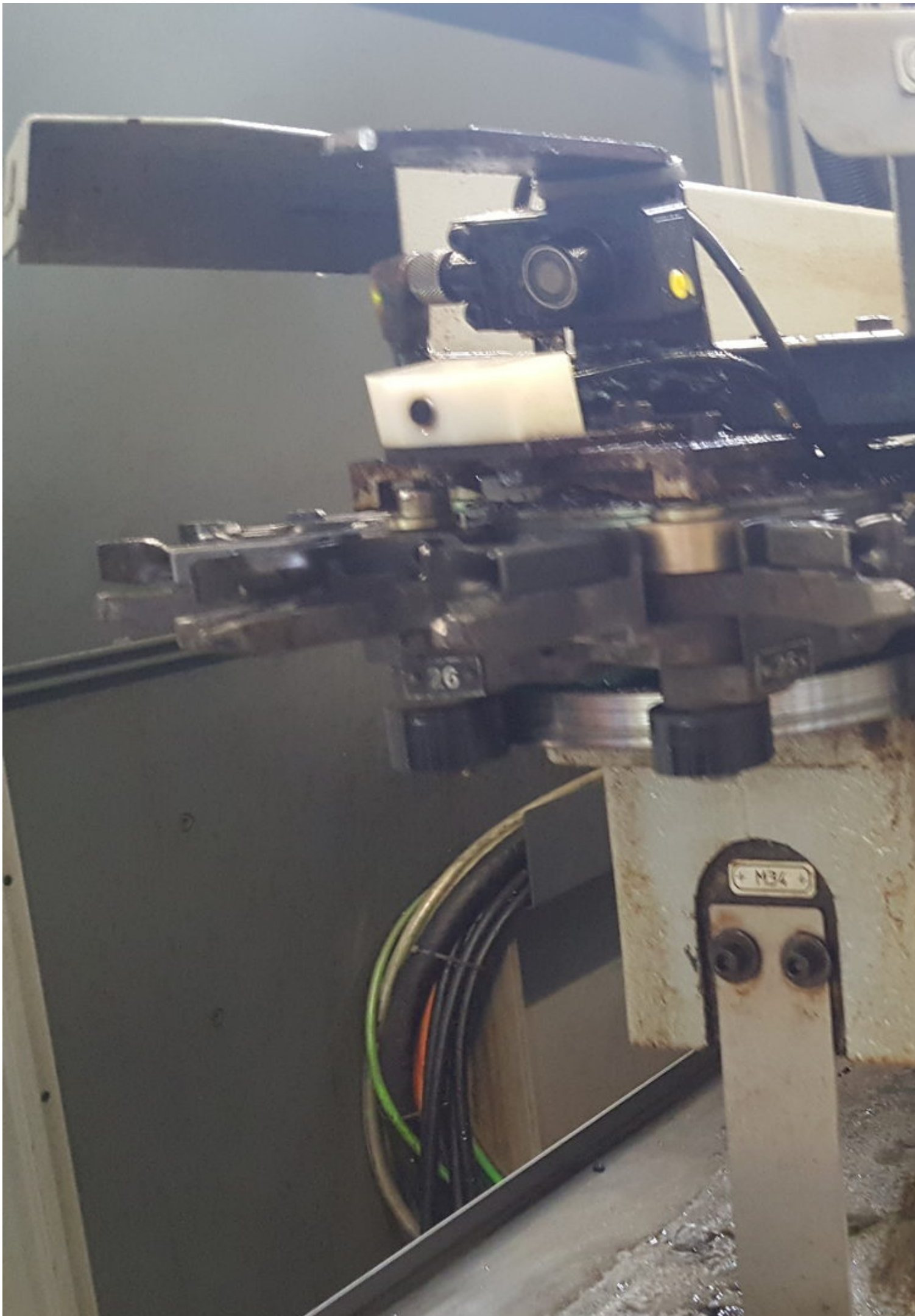










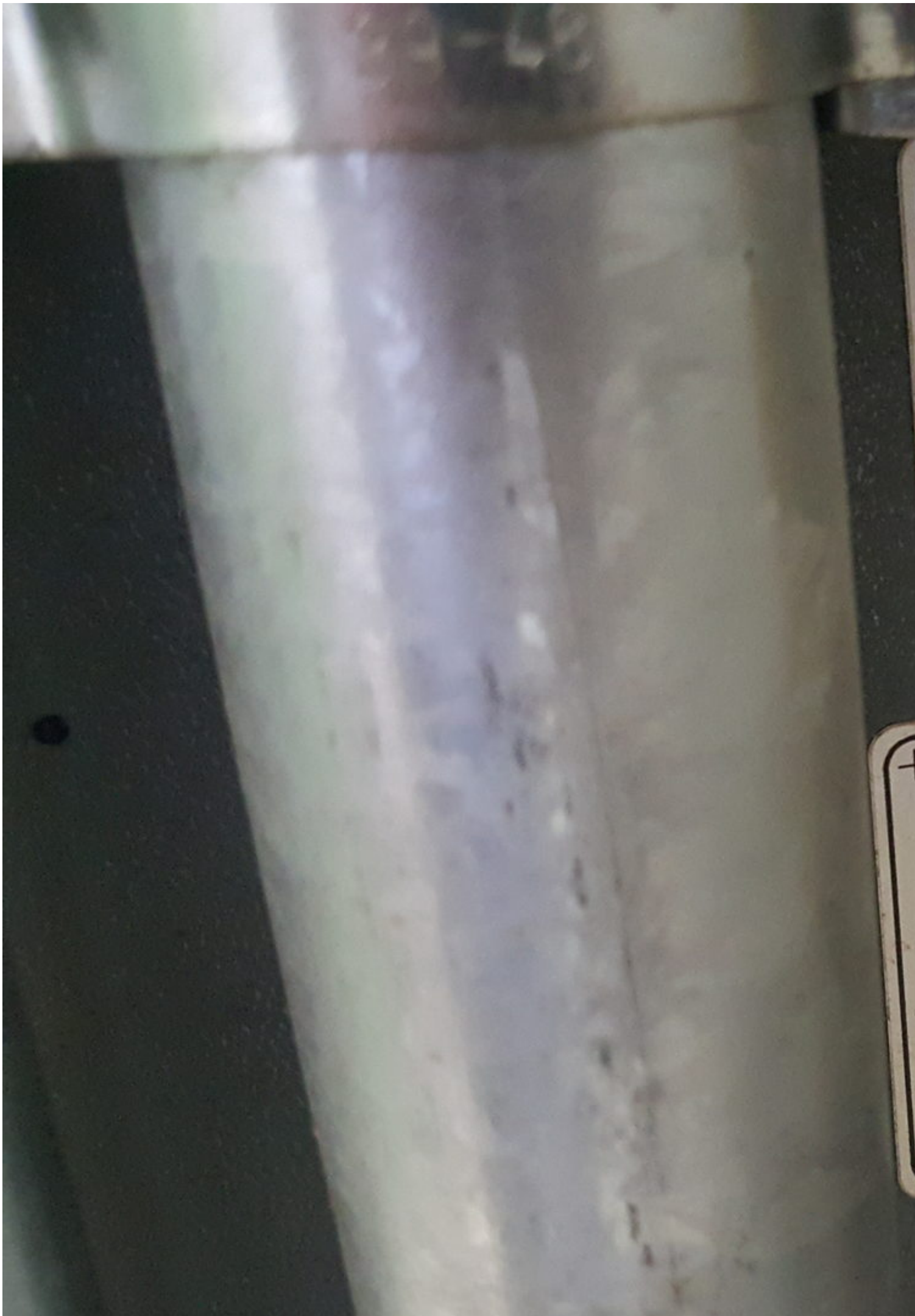


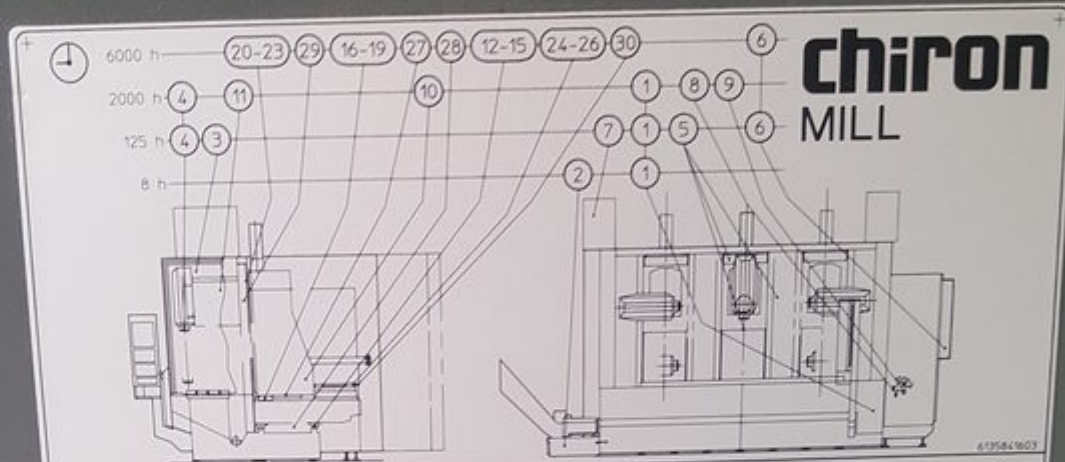












WARTUNG / MAINTENANCE / ENTRETIEN / MANUTENZIONE / MANTENIMIENTO

Nicht genannte "OPTIONEN" / Options not mentioned / Options non nommées / Opzioni non citate / Opciones no mencionadas **1-30**

8 h	
Hydraulikaggregat (wenn vorhanden) / Hydraulic unit (if available) / Groupe hydraulique (si) y en el Grupo hidráulico (si presente) / Gruppo idraulico (se presente) / Gruppo idraulico (si hay)	1
Kühlmittelanlage / Coolant device / Dispositif du refroidisseur / Impianto refrigerante / Equipo de refrigeración / Kühlmittelfilter / Coolant filter / Filtre d'agent réfrigérant / Filtro refrigerante / Filtro del agente refrigerador	2
Späneanhäufungen entfernen / Remove chip accumulations / Eliminer les accumulations de copeaux / Removerse acumul. de trucioli / Eliminar la acumulación de virutas	
125 h	
Maschine / Machine / Macchine / Macchina / Máquina Hauptspindelrotor / Main spindle rotor / Roteur de broche principale / Motore mandrino principale / Motor del husillo principal	3
Werkzeugmagazin / Tool magazine / Magazin à outils / Magazzino utensili / Depósito de herramientas	4
Jalousieabdeckung / Cover / Couverture / Copertura a saracinesca / Cubierta en forma de persiana / Füllenberg / Expansion bellows / Seufflet / Soffietto / Fuelle	5
Schaltschrankkühler / Electric cabinet cooler / Refroidisseur d'armoire électrique / Armadio elettrico refrigeratore / Armario de distribución refrigerador	6
Pneumatikanlage / Pneumatic system / Installation pneumatique / Impianto pneumatico / Instalación neumática	
Kühlaggregat (wenn vorhanden) / Refrigerating set (if available) / Groupe frigorifique (si) y en el Gruppo refrigerazione (se presente) / Grupo frigorífico (si hay)	
Hydraulikaggregat (wenn vorhanden) / Overhaul / Hydraulic unit (if available) / Unit of change / Groupe hydraulique (si) y en el 1er renouvellement d'huile / Gruppo idraulico (se presente) / 1. cambio de aceite	1
Absauganlage (wenn vorhanden) / Suction plant (if available) / Installation d'aspiration (si) y en el Aspirazione (si presente) / Instalación de aspiración (si hay)	7
Linearantrieb / Linear drive / Entraînement linéaire / Azionamento lineare / Accionamiento lineal MILL 4500 / 6000	
2000 h	
WZ-Spannzange / Tool collet / Pince de serrage / Pinza bloccaggio utensili / Pinza para herramientas / HSK-D-Ring / HSK-D-ring / HSK anneau torique / HSK anillo-O	4
Sperrluft (Hauptspindel) / Blocking air (Main spindle) / L'air de blocage (broche principale) / Aria compressa (Mandrino principale) / Aire de bloques (husillo principal)	4
Feinfilter / Fine filter / Filtre fin / Microfiltro / Filtro fino / Druckluftwarteinheit / Air pressure maintenance unit / Conditionneur d'air comprimé / Gruppo manutenzione aria compressa / Unidad de mantenimiento de aire comprimido	8-9
Schmierung / Lubrication / Lubrification / Lubrificazione / Engrase	
Planetengetriebe (Kettenmagazin) / Planetary gear (Chain magazine) / Engrenage planétaire (Magasin à chaînes) / Ruote epicicloidali (Magazzino a catena) / Engrenaje planetario (Almacén a cadenas)	10
Schneckengetriebe (Schwenkskopf) / worm gear (Swivel head) / Engrenage à vis sans fin / tête pivotante / Ingranaggi a vite (testa girante) / Engrenaje de tornillo sin fin (Cabezal girante)	11
Hydraulikaggregat (wenn vorhanden) / Hydraulic unit (if available) / Groupe hydraulique (si) y en el Grupo idraulico (se presente) / Grupo idraulico (si hay)	1
Lampentest / Lamp test / Test des lampes / Test lampade / Prueba de lámparas	
Linearantrieb / Linear drive / Entraînement linéaire / Azionamento lineare / Accionamiento lineal MILL 4500 / 6000	
Kühlaggregat (wenn vorhanden) / Refrigerating set (if available) / Groupe frigorifique (si) y en el Gruppo refrigerazione (se presente) / Grupo frigorífico (si hay)	
6000 h	
Not-Aus-Taster / Emergency stop button / Arrêt d'urgence / Pulsante emergenza / Pulsador de parada de emergencia	
Kühlmittelanlage und Kühlmittelleitungen / Coolant system and pipes / Vanne et conduites d'arrimage / Unidad per refrigerante e condutture per refrigerante / válvulas del refrigerante y tuberías de refrigerante	
Schaltstrom/Bedienort / Electric cabinet/operating panel / Armoire électrique/Panée de commande / Armadio elettrico/Pannello di comando / Armario de distribución/Panpa de control / Batterien/Ladestation / Battery life / Durée de vie des piles / Durata di vita delle batterie / Vida útil de las baterías	4
Schmierung / Lubrication / Lubrification / Lubrificazione / Engrase Schmiermittel / Lubrication elements / Éléments de graissage / Elementi lubrificanti / Elementos de lubricación	12-30

utplan
logram
électrique
etefrico
o de circuitos

Logbuch
e logbook
d'annotations techniques
azione tecniche
técnicas

Typ
Type
Type

Auftr.-N
Order No.
No. de co

Ref.-N
Ref.-No.
No. Ref.

Bauja
Year of
Année

Serie
Serial
No. de

Kn
Sch
D-8

259 03

SIEMENS

POWER TEMP

SINUMERIK

Maschine	MILL HS	AUTO	VMF.DIR			
Kanal aktiv			287957A2 MPF			
			Programm läuft			
700054	WARTUNG VORBEREITEN		ROV			
WKS	Position	Restweg	Masterspindel	SI		
X	8.0000 mm	0.0000	Ist	3999.939 U/min		
Y	-15.5000 mm	0.0000	Soll	4000.000 U/min		
Z	10.0000 mm	0.0000	Pos	0 grad		
A	0.0000 grad	0.0000	Leistung	100.0 %		
C	0.0000 grad	0.0000				
Aktueller Satz: CMA/GG82.SPF			Vorschub [mm/min]			
G4 F-R4			Ist	0.0000 100.0 %		
G0 G603 Z-R10			Soll	0.0000		
ret			Werkzeug			
			T5	D1		
			vorangewähltes Werkzeug			
			T5			
			G00	G40		
DRE Verschiebung	Programm Beend.	Satz-Suchlauf	Handrad	Programm Korrektur	Programmebenen	Programmebenen Übersicht

Navigation buttons: Home, Left, Right, Stop, M, and a small icon button.

QWERTY keyboard and numeric keypad.

Function keys: Back, Forward, Stop, Run, Feed, End, Page Up, Page Down, and other control buttons.

Bottom control panel with a yellow emergency stop button and various function keys.

Video:



Asset-Trade

Assessment and Sale of Used Assets world wide

Am Sonnenhof 16

47800 Krefeld

Germany

Tel.: +49 2151 32500 33

Fax.: +49 2151 65 29 22

Email: info@asset-trade.de

Web.: <https://www.asset-trade.de/en>

Ref. No.:

741-1011160904

Overview and Technical Data:

CHIRON - Mill 800 5 Axis

CHIRON



Year of Build:
Jan 2006

Description:

Used CHIRON Mill 800 5- Axis Mill Center

New Spindle in 9/2016

Overhauled for about 30.000 Euro like tool changer

Operating Hours 46.200 Hours

Spindle hours <500 (Total counter 26.262 hrs.)

Technical Data:

- Siemens 840D control unit
- X = 800 mm
- Y = 630mm
- Z = 550mm
- Spindle speed 12,000 rpm
- Internal coolant with 20 bar
- 3-D Measuring probe
- 40 tools holder
- Knoll Chip Conveyor

Technical Data:**Technical Data:**

Control:

[SINUMERIK 840D](#)

Machine Hours:

46.200 hrs.

Spindle Hours:

500 hrs.

Spindle Speed:

12.000 rpm

Tool Capacity:

40 x

Travels:

X-Axis:

800 mm

Y-Axis:

630mm

Z-Axis:

550 mm

Dimensions and Weight:

Height:

2.990 mm

Width:

2.730 mm

Length:

5.354 mm

Weight:

8.600 kg

Buyer Information:

Condition:

[Very good condition](#)

Availability:

[Sold](#)

Sold as:

[EXW \(Ex Works - Incoterm\)](#)

VAT:

[19 %](#)

Location:

Germany

Images:







SIEMENS

POWER TEMP

SINUMERIK

Maschine	MILL HS	AUTO	VMPF.DIR
Kanal aktiv			287957A2.MPF
700054			WARTUNG VORBEREITEN
WKS	Position	Restweg	Masterspindel S1
X	8.0000 mm	0.0000	Ist 3999.939 U/min
Y	-15.5000 mm	0.0000	Soll 4000.000 U/min
Z	10.0000 mm	0.0000	Pos 0 grad
A	0.0000 grad	0.0000	Leistung 100.0 %
C	0.0000 grad	0.0000	Leistung 2%
Aktueller Satz CMAVGG82.SPF			Vorschub [mm/min]
G4 F=R4			Ist 0.0000 100.0 %
G0 G603 Z=R10			Soll 0.0000
ret			Werkzeug
			> T5 D1
			vorangewähltes Werkzeug:
			> T5
			G00 G40
DRF Verschiebung	Programm Beeinfl.	Satz-Suchlauf	Handrad
Programm Korrektur	Programm Übersicht		

Navigation buttons: Home, Left, Right, Stop, M, M0, M01, M02, M03, M04, M05, M06, M07, M08, M09, M10, M11, M12, M13, M14, M15, M16, M17, M18, M19, M20, M21, M22, M23, M24, M25, M26, M27, M28, M29, M30, M31, M32, M33, M34, M35, M36, M37, M38, M39, M40, M41, M42, M43, M44, M45, M46, M47, M48, M49, M50, M51, M52, M53, M54, M55, M56, M57, M58, M59, M60, M61, M62, M63, M64, M65, M66, M67, M68, M69, M70, M71, M72, M73, M74, M75, M76, M77, M78, M79, M80, M81, M82, M83, M84, M85, M86, M87, M88, M89, M90, M91, M92, M93, M94, M95, M96, M97, M98, M99, M100, M101, M102, M103, M104, M105, M106, M107, M108, M109, M110, M111, M112, M113, M114, M115, M116, M117, M118, M119, M120, M121, M122, M123, M124, M125, M126, M127, M128, M129, M130, M131, M132, M133, M134, M135, M136, M137, M138, M139, M140, M141, M142, M143, M144, M145, M146, M147, M148, M149, M150, M151, M152, M153, M154, M155, M156, M157, M158, M159, M160, M161, M162, M163, M164, M165, M166, M167, M168, M169, M170, M171, M172, M173, M174, M175, M176, M177, M178, M179, M180, M181, M182, M183, M184, M185, M186, M187, M188, M189, M190, M191, M192, M193, M194, M195, M196, M197, M198, M199, M200, M201, M202, M203, M204, M205, M206, M207, M208, M209, M210, M211, M212, M213, M214, M215, M216, M217, M218, M219, M220, M221, M222, M223, M224, M225, M226, M227, M228, M229, M230, M231, M232, M233, M234, M235, M236, M237, M238, M239, M240, M241, M242, M243, M244, M245, M246, M247, M248, M249, M250, M251, M252, M253, M254, M255, M256, M257, M258, M259, M260, M261, M262, M263, M264, M265, M266, M267, M268, M269, M270, M271, M272, M273, M274, M275, M276, M277, M278, M279, M280, M281, M282, M283, M284, M285, M286, M287, M288, M289, M290, M291, M292, M293, M294, M295, M296, M297, M298, M299, M300, M301, M302, M303, M304, M305, M306, M307, M308, M309, M310, M311, M312, M313, M314, M315, M316, M317, M318, M319, M320, M321, M322, M323, M324, M325, M326, M327, M328, M329, M330, M331, M332, M333, M334, M335, M336, M337, M338, M339, M340, M341, M342, M343, M344, M345, M346, M347, M348, M349, M350, M351, M352, M353, M354, M355, M356, M357, M358, M359, M360, M361, M362, M363, M364, M365, M366, M367, M368, M369, M370, M371, M372, M373, M374, M375, M376, M377, M378, M379, M380, M381, M382, M383, M384, M385, M386, M387, M388, M389, M390, M391, M392, M393, M394, M395, M396, M397, M398, M399, M400, M401, M402, M403, M404, M405, M406, M407, M408, M409, M410, M411, M412, M413, M414, M415, M416, M417, M418, M419, M420, M421, M422, M423, M424, M425, M426, M427, M428, M429, M430, M431, M432, M433, M434, M435, M436, M437, M438, M439, M440, M441, M442, M443, M444, M445, M446, M447, M448, M449, M450, M451, M452, M453, M454, M455, M456, M457, M458, M459, M460, M461, M462, M463, M464, M465, M466, M467, M468, M469, M470, M471, M472, M473, M474, M475, M476, M477, M478, M479, M480, M481, M482, M483, M484, M485, M486, M487, M488, M489, M490, M491, M492, M493, M494, M495, M496, M497, M498, M499, M500, M501, M502, M503, M504, M505, M506, M507, M508, M509, M510, M511, M512, M513, M514, M515, M516, M517, M518, M519, M520, M521, M522, M523, M524, M525, M526, M527, M528, M529, M530, M531, M532, M533, M534, M535, M536, M537, M538, M539, M540, M541, M542, M543, M544, M545, M546, M547, M548, M549, M550, M551, M552, M553, M554, M555, M556, M557, M558, M559, M560, M561, M562, M563, M564, M565, M566, M567, M568, M569, M570, M571, M572, M573, M574, M575, M576, M577, M578, M579, M580, M581, M582, M583, M584, M585, M586, M587, M588, M589, M590, M591, M592, M593, M594, M595, M596, M597, M598, M599, M600, M601, M602, M603, M604, M605, M606, M607, M608, M609, M610, M611, M612, M613, M614, M615, M616, M617, M618, M619, M620, M621, M622, M623, M624, M625, M626, M627, M628, M629, M630, M631, M632, M633, M634, M635, M636, M637, M638, M639, M640, M641, M642, M643, M644, M645, M646, M647, M648, M649, M650, M651, M652, M653, M654, M655, M656, M657, M658, M659, M660, M661, M662, M663, M664, M665, M666, M667, M668, M669, M670, M671, M672, M673, M674, M675, M676, M677, M678, M679, M680, M681, M682, M683, M684, M685, M686, M687, M688, M689, M690, M691, M692, M693, M694, M695, M696, M697, M698, M699, M700, M701, M702, M703, M704, M705, M706, M707, M708, M709, M710, M711, M712, M713, M714, M715, M716, M717, M718, M719, M720, M721, M722, M723, M724, M725, M726, M727, M728, M729, M730, M731, M732, M733, M734, M735, M736, M737, M738, M739, M740, M741, M742, M743, M744, M745, M746, M747, M748, M749, M750, M751, M752, M753, M754, M755, M756, M757, M758, M759, M760, M761, M762, M763, M764, M765, M766, M767, M768, M769, M770, M771, M772, M773, M774, M775, M776, M777, M778, M779, M780, M781, M782, M783, M784, M785, M786, M787, M788, M789, M790, M791, M792, M793, M794, M795, M796, M797, M798, M799, M800, M801, M802, M803, M804, M805, M806, M807, M808, M809, M810, M811, M812, M813, M814, M815, M816, M817, M818, M819, M820, M821, M822, M823, M824, M825, M826, M827, M828, M829, M830, M831, M832, M833, M834, M835, M836, M837, M838, M839, M840, M841, M842, M843, M844, M845, M846, M847, M848, M849, M850, M851, M852, M853, M854, M855, M856, M857, M858, M859, M860, M861, M862, M863, M864, M865, M866, M867, M868, M869, M870, M871, M872, M873, M874, M875, M876, M877, M878, M879, M880, M881, M882, M883, M884, M885, M886, M887, M888, M889, M890, M891, M892, M893, M894, M895, M896, M897, M898, M899, M900, M901, M902, M903, M904, M905, M906, M907, M908, M909, M910, M911, M912, M913, M914, M915, M916, M917, M918, M919, M920, M921, M922, M923, M924, M925, M926, M927, M928, M929, M930, M931, M932, M933, M934, M935, M936, M937, M938, M939, M940, M941, M942, M943, M944, M945, M946, M947, M948, M949, M950, M951, M952, M953, M954, M955, M956, M957, M958, M959, M960, M961, M962, M963, M964, M965, M966, M967, M968, M969, M970, M971, M972, M973, M974, M975, M976, M977, M978, M979, M980, M981, M982, M983, M984, M985, M986, M987, M988, M989, M990, M991, M992, M993, M994, M995, M996, M997, M998, M999, M1000, M1001, M1002, M1003, M1004, M1005, M1006, M1007, M1008, M1009, M1010, M1011, M1012, M1013, M1014, M1015, M1016, M1017, M1018, M1019, M1020, M1021, M1022, M1023, M1024, M1025, M1026, M1027, M1028, M1029, M1030, M1031, M1032, M1033, M1034, M1035, M1036, M1037, M1038, M1039, M1040, M1041, M1042, M1043, M1044, M1045, M1046, M1047, M1048, M1049, M1050, M1051, M1052, M1053, M1054, M1055, M1056, M1057, M1058, M1059, M1060, M1061, M1062, M1063, M1064, M1065, M1066, M1067, M1068, M1069, M1070, M1071, M1072, M1073, M1074, M1075, M1076, M1077, M1078, M1079, M1080, M1081, M1082, M1083, M1084, M1085, M1086, M1087, M1088, M1089, M1090, M1091, M1092, M1093, M1094, M1095, M1096, M1097, M1098, M1099, M1100, M1101, M1102, M1103, M1104, M1105, M1106, M1107, M1108, M1109, M1110, M1111, M1112, M1113, M1114, M1115, M1116, M1117, M1118, M1119, M1120, M1121, M1122, M1123, M1124, M1125, M1126, M1127, M1128, M1129, M1130, M1131, M1132, M1133, M1134, M1135, M1136, M1137, M1138, M1139, M1140, M1141, M1142, M1143, M1144, M1145, M1146, M1147, M1148, M1149, M1150, M1151, M1152, M1153, M1154, M1155, M1156, M1157, M1158, M1159, M1160, M1161, M1162, M1163, M1164, M1165, M1166, M1167, M1168, M1169, M1170, M1171, M1172, M1173, M1174, M1175, M1176, M1177, M1178, M1179, M1180, M1181, M1182, M1183, M1184, M1185, M1186, M1187, M1188, M1189, M1190, M1191, M1192, M1193, M1194, M1195, M1196, M1197, M1198, M1199, M1200, M1201, M1202, M1203, M1204, M1205, M1206, M1207, M1208, M1209, M1210, M1211, M1212, M1213, M1214, M1215, M1216, M1217, M1218, M1219, M1220, M1221, M1222, M1223, M1224, M1225, M1226, M1227, M1228, M1229, M1230, M1231, M1232, M1233, M1234, M1235, M1236, M1237, M1238, M1239, M1240, M1241, M1242, M1243, M1244, M1245, M1246, M1247, M1248, M1249, M1250, M1251, M1252, M1253, M1254, M1255, M1256, M1257, M1258, M1259, M1260, M1261, M1262, M1263, M1264, M1265, M1266, M1267, M1268, M1269, M1270, M1271, M1272, M1273, M1274, M1275, M1276, M1277, M1278, M1279, M1280, M1281, M1282, M1283, M1284, M1285, M1286, M1287, M1288, M1289, M1290, M1291, M1292, M1293, M1294, M1295, M1296, M1297, M1298, M1299, M1300, M1301, M1302, M1303, M1304, M1305, M1306, M1307, M1308, M1309, M1310, M1311, M1312, M1313, M1314, M1315, M1316, M1317, M1318, M1319, M1320, M1321, M1322, M1323, M1324, M1325, M1326, M1327, M1328, M1329, M1330, M1331, M1332, M1333, M1334, M1335, M1336, M1337, M1338, M1339, M1340, M1341, M1342, M1343, M1344, M1345, M1346, M1347, M1348, M1349, M1350, M1351, M1352, M1353, M1354, M1355, M1356, M1357, M1358, M1359, M1360, M1361, M1362, M1363, M1364, M1365, M1366, M1367, M1368, M1369, M1370, M1371, M1372, M1373, M1374, M1375, M1376, M1377, M1378, M1379, M1380, M1381, M1382, M1383, M1384, M1385, M1386, M1387, M1388, M1389, M1390, M1391, M1392, M1393, M1394, M1395, M1396, M1397, M1398, M1399, M1400, M1401, M1402, M1403, M1404, M1405, M1406, M1407, M1408, M1409, M1410, M1411, M1412, M1413, M1414, M1415, M1416, M1417, M1418, M1419, M1420, M1421, M1422, M1423, M1424, M1425, M1426, M1427, M1428, M1429, M1430, M1431, M1432, M1433, M1434, M1435, M1436, M1437, M1438, M1439, M1440, M1441, M1442, M1443, M1444, M1445, M1446, M1447, M1448, M1449, M1450, M1451, M1452, M1453, M1454, M1455, M1456, M1457, M1458, M1459, M1460, M1461, M1462, M1463, M1464, M1465, M1466, M1467, M1468, M1469, M1470, M1471, M1472, M1473, M1474, M1475, M1476, M1477, M1478, M1479, M1480, M1481, M1482, M1483, M1484, M1485, M1486, M1487, M1488, M1489, M1490, M1491, M1492, M1493, M1494, M1495, M1496, M1497, M1498, M1499, M1500, M1501, M1502, M1503, M1504, M1505, M1506, M1507, M1508, M1509, M1510, M1511, M1512, M1513, M1514, M1515, M1516, M1517, M1518, M1519, M1520, M1521, M1522, M1523, M1524, M1525, M1526, M1527, M1528, M1529, M1530, M1531, M1532, M1533, M1534, M1535, M1536, M1537, M1538, M1539, M1540, M1541, M1542, M1543, M1544, M1545, M1546, M1547, M1548, M1549, M1550, M1551, M1552, M1553, M1554, M1555, M1556, M1557, M1558, M1559, M1560, M1561, M1562, M1563, M1564, M1565, M1566, M1567, M1568, M1569, M1570, M1571, M1572, M1573, M1574, M1575, M1576, M1577, M1578, M1579, M1580, M1581, M1582, M1583, M1584, M1585, M1586, M1587, M1588, M1589, M1590, M1591, M1592, M1593, M1594, M1595, M1596, M1597, M1598, M1599, M1600, M1601, M1602, M1603, M1604, M1605, M1606, M1607, M1608, M1609, M1610, M1611, M1612, M1613, M1614, M1615, M1616, M1617, M1618, M1619, M1620, M1621, M1622, M1623, M1624, M1625, M1626, M1627, M1628, M1629, M1630, M1631, M1632, M1633, M1634, M1635, M1636, M1637, M1638, M1639, M1640, M1641, M1642, M1643, M1644, M1645, M1646, M1647, M1648, M1649, M1650, M1651, M1652, M1653, M1654, M1655, M1656, M1657, M1658, M1659, M1660, M1661, M1662, M1663, M1664, M1665, M1666, M1667, M1668, M1669, M1670, M1671, M1672, M1673, M1674, M1675, M1676, M1677, M1678, M1679, M1680, M1681, M1682, M1683, M1684, M1685, M1686, M1687, M1688, M1689, M1690, M1691, M1692, M1693, M1694, M1695, M1696, M1697, M1698, M1699, M1700, M1701, M1702, M1703, M1704, M1705, M1706, M1707, M1708, M1709, M1710, M1711, M1712, M1713, M1714, M1715, M1716, M1717, M1718, M1719, M1720, M1721, M1722, M1723, M1724, M1725, M1726, M1727, M1728, M1729, M1730, M1731, M1732, M1733, M1734, M1735, M1736, M1737, M1738, M1739, M1740, M1741, M1742, M1743, M1744, M1745, M1746, M1747, M1748, M1749, M1750, M1751, M1752, M1753, M1754, M1755, M1756, M1757, M1758, M1759, M1760, M1761, M1762, M1763, M1764, M1765, M1766, M1767, M1768, M1769, M1770, M1771, M1772, M1773, M1774, M1775, M1776, M1777, M1778, M1779, M1780, M1781, M1782, M1783, M1784, M1785, M1786, M1787, M1788, M1789, M1790, M1791, M1792, M1793, M1794, M1795, M1796, M1797, M1798, M1799, M1800, M1801, M1802, M1803, M1804, M1805, M1806, M1807, M1808, M1809, M1810, M1811, M1812, M1813, M1814, M1815, M1816, M1817, M1818, M1819, M1820, M1821, M1822, M1823, M1824, M1825, M1826, M1827, M1828, M1829, M1830, M1831, M1832, M1833, M1834, M1835, M1836, M1837, M1838, M1839, M1840, M1841, M1842, M1843, M1844, M1845, M1846, M1847, M1848, M1849, M1850, M1851, M1852, M1853, M1854, M1855, M1856, M1857, M1858, M1859, M1860, M1861, M1862, M1863, M1864, M1865, M1866, M1867, M1868, M1869, M1870, M1871, M1872, M1873, M1874, M1875, M1876, M1877, M1878, M1879, M1880, M1881, M1882, M1883, M1884, M1885, M1886, M1887, M1888, M1889, M1890, M1891, M1892, M1893, M1894, M1895, M1896, M1897, M1898, M1899, M1900, M1901, M1902, M1903, M1904, M1905, M1906, M1907, M1908, M1909, M1910, M1911, M1912, M1913, M1914, M1915, M1916, M1917, M1918, M1919, M1920, M1921, M1922, M1923, M1924, M1925, M1926, M1927, M1928, M1929, M1930, M1931, M1932, M1933, M1934, M1935, M1936, M1937, M1938, M1939, M1940, M1941, M1942, M1943, M1944, M1945, M1946, M1947, M1948, M1949, M1950, M1951, M1952, M1953, M1954, M1955, M1956, M1957, M1958, M1959, M1960, M1961, M1962, M1963, M1964, M1965, M1966, M1967, M1968, M1969, M1970, M1971, M1972, M1973, M1974, M1975, M1976, M1977, M1978, M1979, M1980, M1981, M1982, M1983, M1984, M1985, M1986, M1987, M1988, M1989, M1990, M1991, M1992, M1993, M1994, M1995, M1996, M1997, M1998, M1999, M2000, M2001, M2002, M2003, M2004, M2005, M2006, M2007, M2008, M2009, M2010, M2011, M2012, M2013, M2014, M2015, M2016, M2017, M2018, M2019, M2020, M2021, M2022, M2023, M2024, M2025, M2026, M2027, M2028, M2029, M2030, M2031, M2032, M2033, M2034, M2035, M2036, M2037, M2038, M2039, M2040, M2041, M2042, M2043, M2044, M2045, M2046, M2047, M2048, M2049, M2050, M2051, M2052, M2053, M2054, M2055, M2056, M2057, M2058, M2059, M2060, M2061, M2062, M2063, M2064, M2065, M2066, M2067, M2068, M2069, M2070, M2071, M2072, M2073, M2074, M2075, M2076, M2077, M2078, M2079, M2080, M2081, M2082, M2083, M2084, M2085, M2086, M2087, M2088, M2089, M2090, M2091, M2092, M2093, M2094, M2095, M2096, M2097, M2098, M2099, M2100, M2101, M2102, M2103, M2104, M2105, M2106, M2107, M2108, M2

Kanal RESET

510009 ↓

SCHUTZEINRICHTUNG NICHT

chiron

gesamte CMDA

Hauptschalter eingeschaltet

Maschine komplett eingeschaltet (+g)

BA-Automatik_NC-Läuft (LED) (= Produ

Hauptspindeldrehzahl läuft

NC-Läuft (LED)_VS-Korrektur < 100%

NC-Läuft (LED)_VS-Korrektur = 0% ode

Maschine wartet auf Beladung

NC-Alarm >15 s

PLC-Alarm >15 s

1 Maschinensteuerung

Stückzahl_AF-1

69

Stückzahl_AF-2

Stückzahl 1.Schicht

27

Stückzahl 2.Schicht

30

Stückzahl 3.Schicht

11

CMDA

Tag_x

CMDA

Monat

CMDA

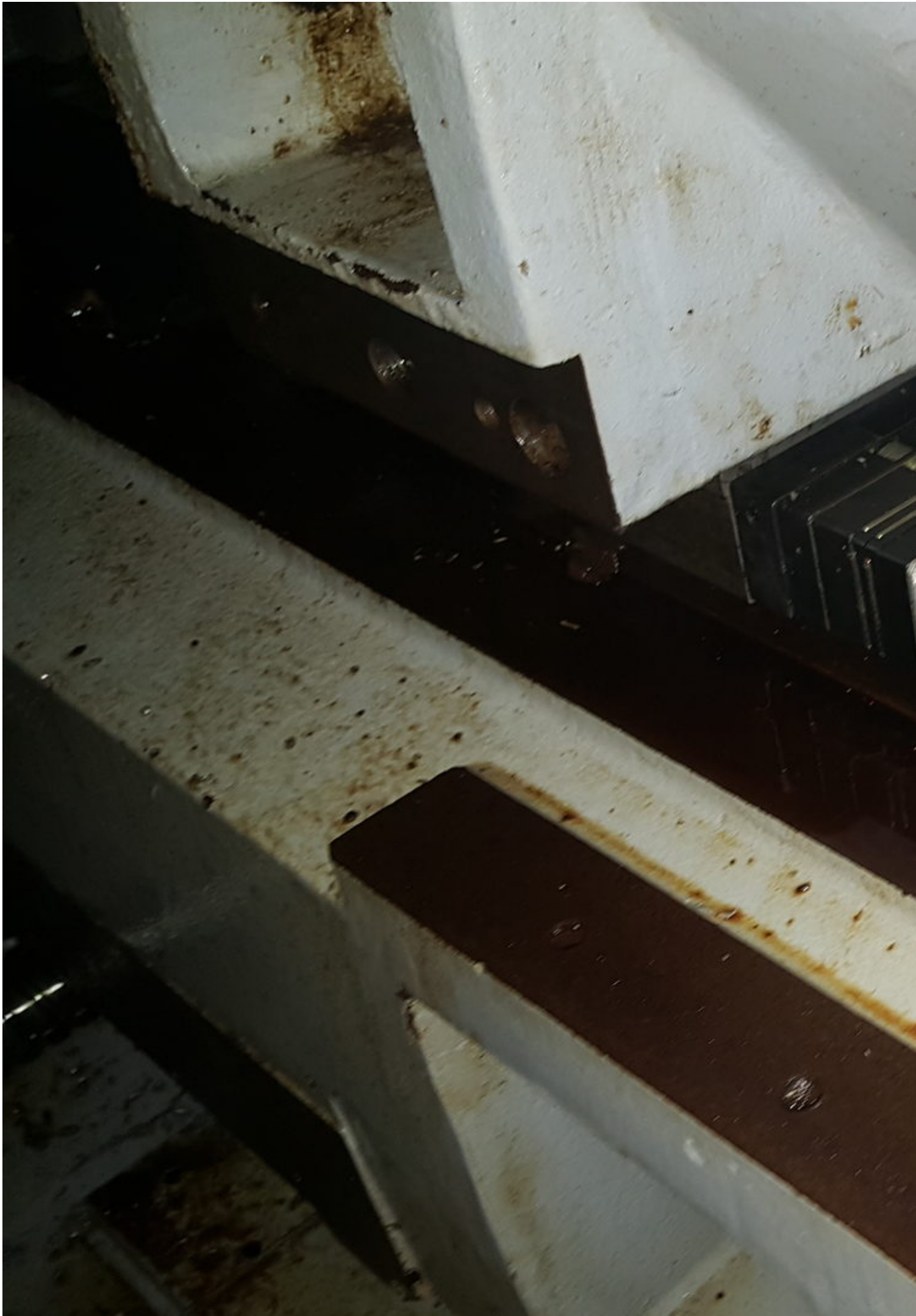
Gesamt





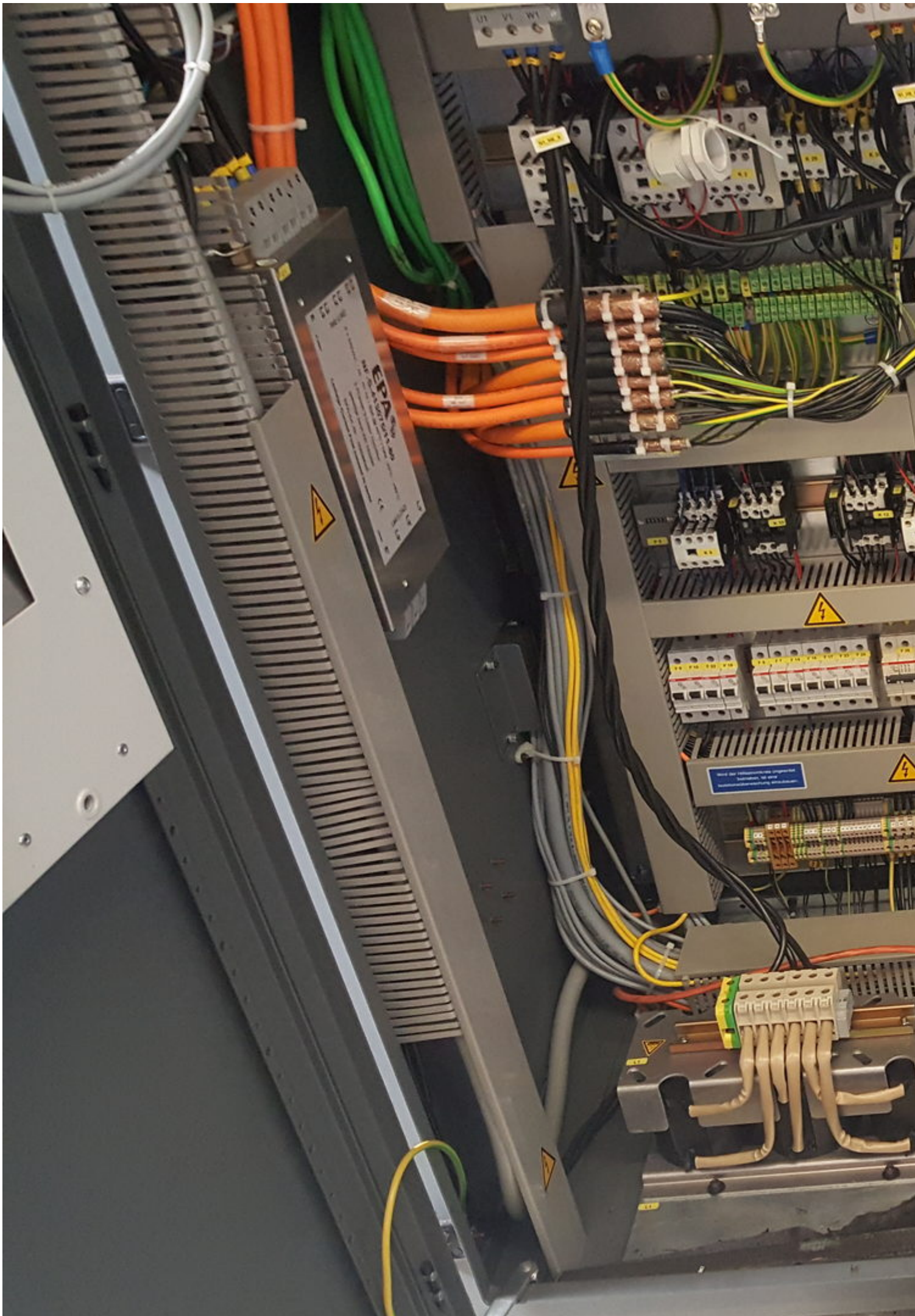


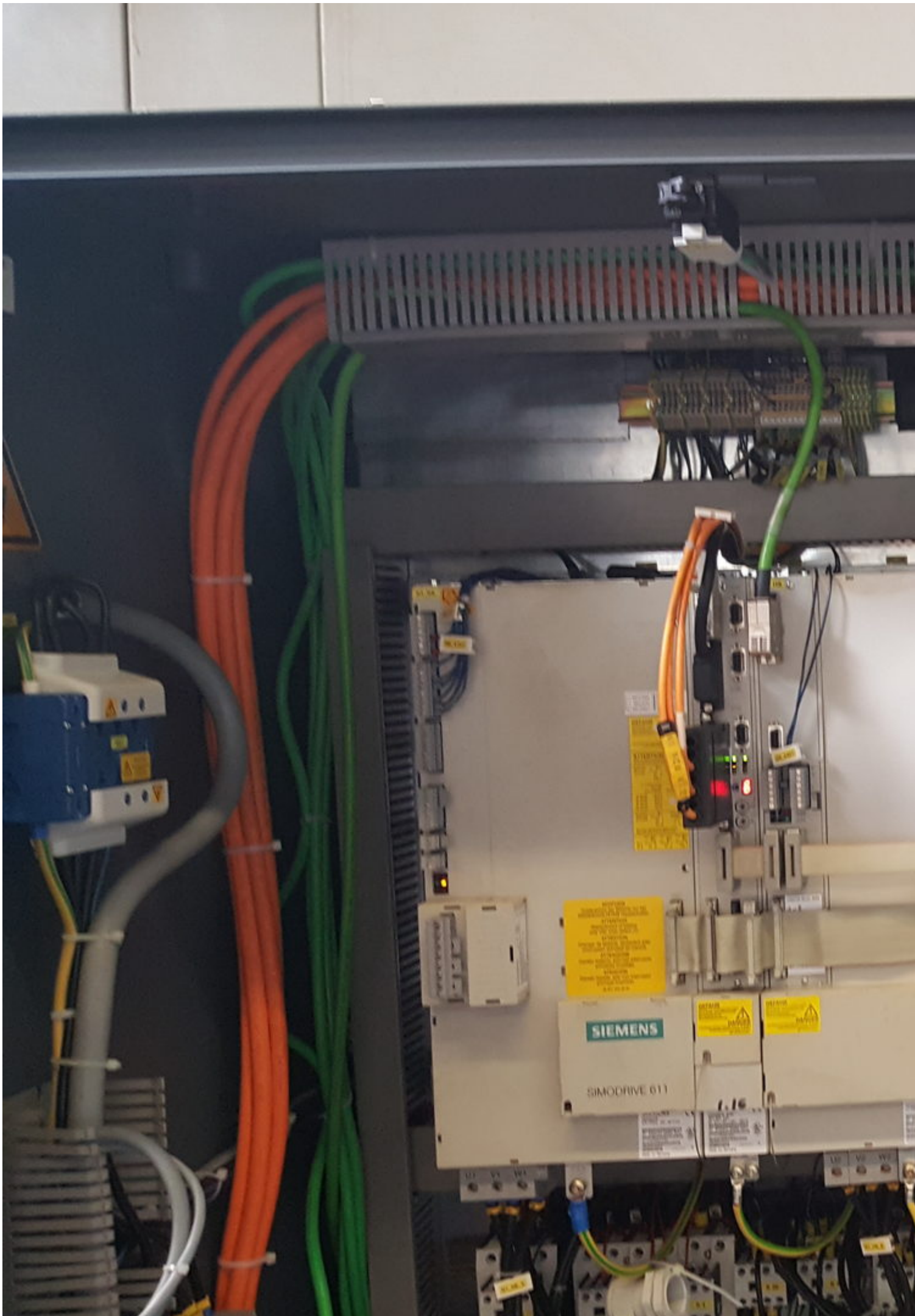


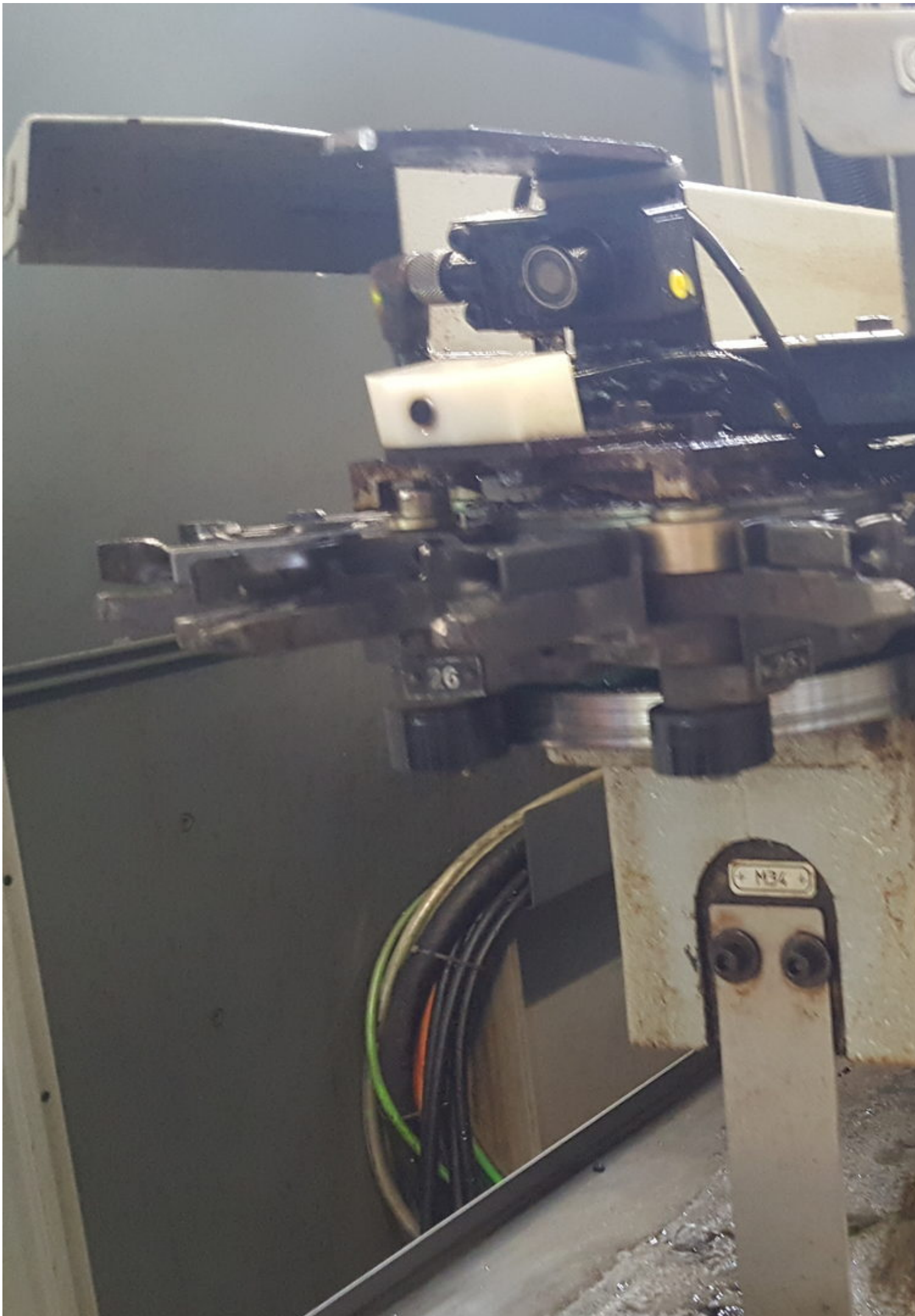










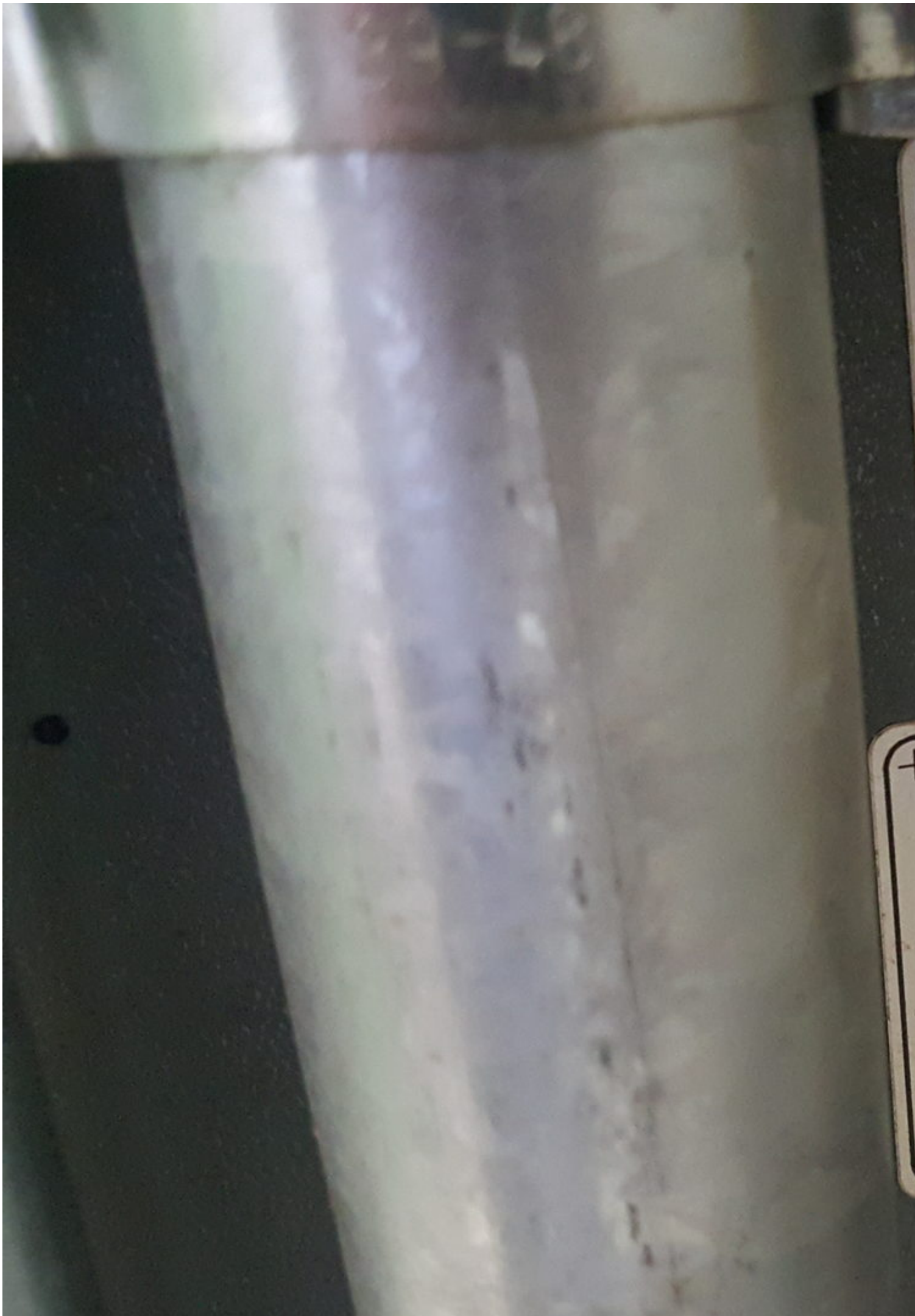


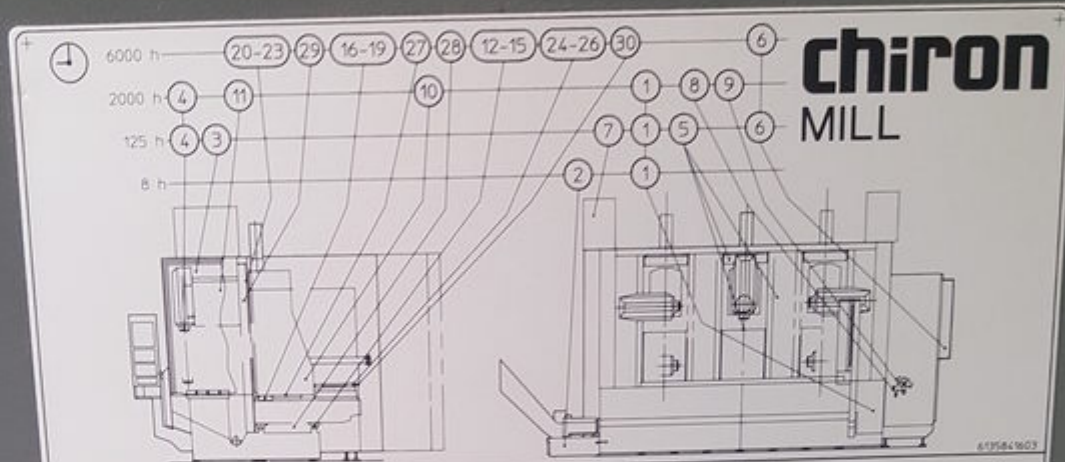












WARTUNG / MAINTENANCE / ENTRETIEN / MANUTENZIONE / MANTENIMIENTO

Nicht genannte "OPTIONEN" / Options not mentioned / Options non nommées / Opzioni non citate / Opciones no mencionadas **1-30**

8 h	
Hydraulikaggregat (wenn vorhanden) / Hydraulic unit (if available) / Groupe hydraulique (si) y en el Grupo hidráulico (se presente) / Gruppo idraulico (se presenti)	1
Kühlmittelanlage / Coolant device / Dispositif du refroidisseur / Impianto refrigerante / Equipo de refrigeración / Kühlmittelfilter / Coolant filter / Filtre d'agent réfrigérant / Filtro refrigerante / Filtro del agente refrigerador	2
Späneanhäufungen entfernen / Remove chip accumulations / Eliminer les accumulations de copeaux / Removerse acumul. de trucioli / Eliminar la acumulación de virutas	

125 h	
Maschine / Machine / Macchine / Macchina / Máquina / Hauptspindelrotor / Main spindle rotor / Roteur de broche principale / Motore mandrino principale / Motor del husillo principal	3
Werkzeugmagazin / Tool magazine / Magasin à outils / Magazzino utensili / Depósito de herramientas	4
Jalousieabdeckung / Cover / Couverture / Copertura a saracinesca / Cubierta en forma de persiana / Füllenberg / Expansion bellows / Seufflet / Soffietto / Fuelle	5
Schalterschrankkühler / Electric cabinet cooler / Refroidisseur d'armoire électrique / Armadio elettrico refrigeratore / Armario de distribución refrigerador	6
Pneumatikanlage / Pneumatic system / Installation pneumatique / Impianto pneumatico / Instalación neumática	
Kühlaggregat (wenn vorhanden) / Refrigerating set (if available) / Groupe frigorifique (si) y en el Gruppo refrigerazione (se presente) / Grupo frigorífico (se haya)	
Hydraulikaggregat (wenn vorhanden) 1. Ölwechsel / Hydraulic unit (if available) 1st oil change / Groupe hydraulique (si) y en el 1er renouvellement d'huile / Gruppo idraulico (se presenti) 1. cambio de aceite	1
Absauganlage (wenn vorhanden) / Suction plant (if available) / Installation d'aspiration (si) y en el Aspirazione (si presente) / Instalación de aspiración (si haya)	7
Linearantrieb / Linear drive / Entraînement linéaire / Azionamento lineare / Accionamiento lineal MILL 4500 / 6000	

2000 h	
WZ-Spannzange / Tool collet / Pince de serrage / Pinza bloccaggio utensili / Pinza para herramientas / HSK-O-Ring / HSK-O-ring / HSK anneau torique / HSK anillo-O	4
Sperrluft (Hauptspindel) / Blocking air (Main spindle) / L'air de blocage (broche principale) / Aria compressa (Mandrino principale) / Aire de bloques (husillo principal)	4
Feinfilter / Fine filter / Filtre fin / Microfiltro / Filtro fino / Druckluftwarteinheit / Air pressure maintenance unit / Conditionneur d'air comprimé / Gruppo manutenzione aria compressa / Unidad de mantenimiento de aire comprimido	8-9
Schmierung / Lubrication / Lubrification / Lubrificazione / Engrase	
Planetengetriebe (Kettenmagazin) / Planetary gear (Chain magazine) / Engrenage planétaire (Magasin à chaînes) / Ruote epicicloidali (Magazzino a catena) / Engrenaje planetario (Almacén a cadenas)	10
Schneckengetriebe (Schwenkschliff) / worm gear (Swivel head) / Engrenage à vis sans fin (Tête pivotante) / Ingranaggi a vite (Testa girante) / Engrenaje de tornillo sin fin (Cabezal girante)	11
Hydraulikaggregat (wenn vorhanden) / Hydraulic unit (if available) / Groupe hydraulique (si) y en el Grupo idraulico (se presente) / Grupo hidráulico (se haya)	1
Lampentest / Lamp test / Test des lampes / Test lampade / Prueba de lámparas	
Linearantrieb / Linear drive / Entraînement linéaire / Azionamento lineare / Accionamiento lineal MILL 4500 / 6000	
Kühlaggregat (wenn vorhanden) / Refrigerating set (if available) / Groupe frigorifique (si) y en el Gruppo refrigerazione (se presente) / Grupo frigorífico (se haya)	

6000 h	
Not-Aus-Taster / Emergency stop button / Arrêt d'urgence / Pulsante emergenza / Pulsador de parada de emergencia	
Kühlmittelanlage und Kühlmittelleitungen / Coolant system and pipes / Vanne et conduites d'alimentage / Unidad de refrigerante y tuberías de refrigerante / válvulas del refrigerante y tuberías de refrigerante	
Schalterschrank/Batterien / Electric cabinet/Batteries / Armoire électrique/Pilas de control / Armadio elettrico/Batterie di controllo / Armario de distribución/Pilas de control / Batterien/Lenkerbox / Battery life / Durée de vie des piles / Durata di vita delle batterie / Vida útil de las baterías	4
Schmierung / Lubrication / Lubrification / Lubrificazione / Engrase	
Schmiermittel / Lubrication elements / Éléments de graissage / Elementi lubrificanti / Elementos de lubricación	12-30

utplan
rogram
électrique
etférico
o de circuitos

Logbuch
e logbook
Annotations techniques
azione tecniche
técnicas

2000
2000
Autocollanti dei responsabili

Typ
Type
Type

Auftr.-N
Order No.
No. de co

Ref.-N
Ref.-No.
No. Ref.

Bauja
Year of
Année

Serie
Serial
No. de

Kn
Sch
D-8

259 03

SIEMENS

POWER TEMP

SINUMERIK

Maschine	MILL HS	AUTO	VMF.DIR				
Kanal aktiv			287957A2 MPF				
			Programm läuft				
700054	WARTUNG VORBEREITEN		ROV				
WKS	Position	Restweg	Masterspindel	SI			
X	8.0000 mm	0.0000	Ist	3999.939 U/min			
Y	-15.5000 mm	0.0000	Soll	4000.000 U/min			
Z	10.0000 mm	0.0000	Pos	0 grad			
A	0.0000 grad	0.0000	Leistung	100.0 %			
C	0.0000 grad	0.0000					
Aktueller Satz: CMA/GG82.SPF			Vorschub [mm/min]				
G4 F-R4			Ist	0.0000 100.0 %			
G0 G603 Z-R10			Soll	0.0000			
ret			Werkzeug				
			T5	D1			
			vorangewähltes Werkzeug				
			T5				
			G00	G40			
	DRE Verschiebung	Programm Beend.	Satz-Suchlauf	Handrad	Programm Korrektur	Programmebenen	Programmebenen Übersicht

Navigation buttons: Home, Left, Right, Stop, M, and a numeric keypad.

QWERTY keyboard and numeric keypad.

Function keys: Back, Forward, Stop, Run, Feed, End, and other control buttons.

Bottom control panel with a yellow emergency stop button and various function keys.

Video:



Asset-Trade

Assessment and Sale of Used Assets world wide

Am Sonnenhof 16

47800 Krefeld

Germany

Tel.: +49 2151 32500 33

Fax.: +49 2151 65 29 22

Email: info@asset-trade.de

Web.: <https://www.asset-trade.de/en>

Generated on 03.04.2026

© Copyright 2026 - [Asset-Trade](#)

Page