



Image not found or type unknown

Ref. No.:

829-07111640201635

Overview and Technical Data:

KARL ROLL - RUT-090-045-050-04 Ultrasonic washing machine

KARL ROLL



THE D.O.

Year of Build:
Aug 2012

Description:

Used Karl Roll RUT ultrasonic washing machine with drying unit

The automatic cleaning system is used exclusively for the cleaning and degreasing of metal parts by means of aqueous media

Technical data for the fully encapsulated cleaning system for ultra-fine cleaning:

- CNC Control Siemens S7
- Part size 900x450x500 max 250 kg
- Depending on the program a maximum of 13 batches / hour
- Stainless steel basket
- Container contents:
 - Sampling container for station 1 approx. 880 liters
 - Oil separator 1 approx. 300 liters
 - Station 2 approx. 920 liters
 - Station 3 approx. 960 liters
 - Volume of the basin is approx. 3470 liters
- heating
 - Sampling tank for station 1 36 kW (electric)
 - Station 2 27 kW (electric)
 - Station 3 27 kW (electric)
- Compressed air connection DN 15
- Current type 400 Volt, 50 Hz, 185 kW, 318 A
- Space requirement WxLxH 7500 x 10500 x 4250 mm

The cleaning system consists of:

- Frame with integrated floor pan and cover plates
- Horizontal driving device
- Vertical lifting device
- Goods transport device
- Drum means
- Cleaning and rinsing containers, vacuum drying,
- Heating device for the cleaning and rinsing containers,
- ultrasonic device
- filtration device
- oil separator
- Pumping and discharging device
- After dosing device
- Anlagenabsaugung
- Electrical control cabinet
- Supply and discharge roller track for this purpose is provided with a return roller track
- Cooling tunnel on unloading line

These facilities always find application when high throughputs, large batch weights, complicated part geometries and complex multilevel processes are involved. The configuration as well as the accessory range is tailored in each case to customer requirements.

A tried-and-tested transfer system with removable basket holders means that the fully automatic multichamber immersion facility allows cost-effective retrofitting of additional basket holders that flexibly increase the throughput performance. Alternatively, additional basket holders can lengthen process times in the individual stations whilst maintaining the same throughput capacity and thus fulfil the demands for higher cleanliness.

Multichamber immersion facilities also offer the largest possible degree of flexibility for goods movement, cleaning agents selection and accessories. Simultaneous swivel/turn and lifting movements can be easily integrated into this facility concept. Machine technology permits the use of efficient immersion tensides or aggressive media in plastic tanks and the system offers the lowest drag rates for complex demands of cleaning agents mixing and rinsing quality.

Technical Data:

Technical Data:

Control:
[SIMATIC S7](#)

Dimensions and Weight:

Height:
4.250 mm
Length:
7.500 mm
Width:
10.500 mm

Buyer Information:

Condition:
[Very good condition](#)
Available:
[Sold](#)
Sold as:
[EXW \(Ex Works - Incoterm\)](#)
VAT:
[19 %](#)
Buyers Premium:
[16 %](#)
Location:
Germany

Images:





Teile-Reinigungssysteme

Karl Roll GmbH & Co. KG · Kanalstr. 30 · D-75417 Mühlacker

Type

PL 0090-04E-050-04

Fabr. Nr. / Serial No

40510E

Numéro série

Baujahr / Year of construction

8/2012

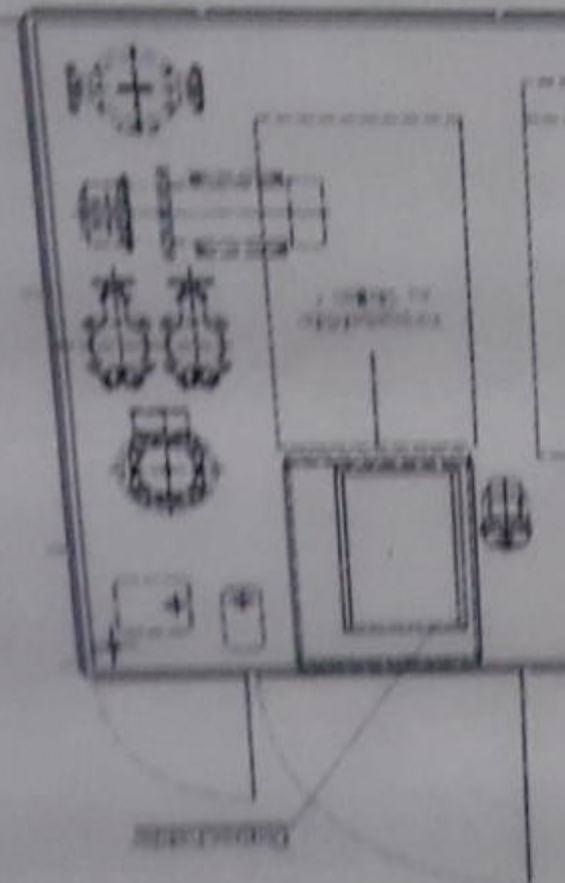
Année de fabrication

Stromart / Kind of current



Druck Messen im Normalbetrieb offen sein

Rot

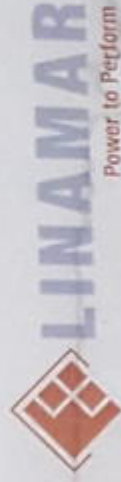


Becken 1

Spritz- und Punktspritzwaschen inklusive Druckumfluten

Tankvolumen		1
Soil-Temperatur		60°C
Medium	Konzentration	Men
Surter 533	441%	
Surter 084	1.840,2%	
auto. Dosierung 8533		0,00/
auto. Dosierung 8084		0,00/

Fluidmanagement



Anlage: Roll Waschmaschine (OP80/OP90E)		440.04.901
Handelsname		
Hersteller / Lieferant		
Telefonnummer		
Einsatzkonzentration		SurTec 533 & 084
Eingriffsgrenzen		SurTec Deutschland GmbH
Refraktometerfaktor		06251/ 171 767
Titrationsfaktor (Castrol ML)		
Nitritgehalt		
Becken 1: 3%	Becken 2: 1%	Becken 3: 3%
2,0%	4,0%	0,4%
entfällt		Tensid: 2%
0,21		+ 0,2%
bis 20		
bis 27		



SIEMENS

SIMATIC PANEL

TOUCH

79

A2M; Fahrzeugen zurückvor
Isposition: in Station 3
1641,9 mm

Zielfahrt,
nach;

Zielfahrt,
nach;

Station 4

Station 1





























Video:



Asset-Trade

Assessment and Sale of Used Assets world wide

Am Sonnenhof 16

47800 Krefeld

Germany

Tel.: +49 2151 32500 33

Fax.: +49 2151 65 29 22

Email: info@asset-trade.de

Web.: <https://www.asset-trade.de/en>

Ref. No.:
829-07111640201635

Overview and Technical Data:

KARL ROLL - RUT-090-045-050-04 Ultrasonic washing machine

[KARL ROLL](#)



THE D.O.

Year of Build:
Aug 2012

Description:

Used Karl Roll RUT ultrasonic washing machine with drying unit

The automatic cleaning system is used exclusively for the cleaning and degreasing of metal parts by means of aqueous media

Technical data for the fully encapsulated cleaning system for ultra-fine cleaning:

- CNC Control Siemens S7
- Part size 900x450x500 max 250 kg
- Depending on the program a maximum of 13 batches / hour
- Stainless steel basket
- Container contents:
 - Sampling container for station 1 approx. 880 liters
 - Oil separator 1 approx. 300 liters
 - Station 2 approx. 920 liters
 - Station 3 approx. 960 liters
 - Volume of the basin is approx. 3470 liters
- heating
 - Sampling tank for station 1 36 kW (electric)
 - Station 2 27 kW (electric)
 - Station 3 27 kW (electric)
- Compressed air connection DN 15
- Current type 400 Volt, 50 Hz, 185 kW, 318 A
- Space requirement WxLxH 7500 x 10500 x 4250 mm

The cleaning system consists of:

- Frame with integrated floor pan and cover plates
- Horizontal driving device
- Vertical lifting device
- Goods transport device
- Drum means
- Cleaning and rinsing containers, vacuum drying,
- Heating device for the cleaning and rinsing containers,
- ultrasonic device
- filtration device
- oil separator
- Pumping and discharging device
- After dosing device
- Anlagenabsaugung
- Electrical control cabinet
- Supply and discharge roller track for this purpose is provided with a return roller track
- Cooling tunnel on unloading line

These facilities always find application when high throughputs, large batch weights, complicated part geometries and complex multilevel processes are involved. The configuration as well as the accessory range is tailored in each case to customer requirements.

A tried-and-tested transfer system with removable basket holders means that the fully automatic multichamber immersion facility allows cost-effective retrofitting of additional basket holders that flexibly increase the throughput performance. Alternatively, additional basket holders can lengthen process times in the individual stations whilst maintaining the same throughput capacity and thus fulfil the demands for higher cleanliness.

Multichamber immersion facilities also offer the largest possible degree of flexibility for goods movement, cleaning agents selection and accessories. Simultaneous swivel/turn and lifting movements can be easily integrated into this facility concept. Machine technology permits the use of efficient immersion tensides or aggressive media in plastic tanks and the system offers the lowest drag rates for complex demands of cleaning agents mixing and rinsing quality.

Technical Data:

Technical Data:

Control:
[SIMATIC S7](#)

Dimensions and Weight:

Height:
4.250 mm
Length:
7.500 mm
Width:
10.500 mm

Buyer Information:

Condition:
[Very good condition](#)
Available:
[Sold](#)
Sold as:
[EXW \(Ex Works - Incoterm\)](#)
VAT:
[19 %](#)
Buyers Premium:
[16 %](#)
Location:
Germany

Images:





Teile-Reinigungssysteme

Karl Roll GmbH & Co. KG • Kanalstr. 30 • D-75417 Mühlacker

Type

PL 0090-04E-050-04

Fabr. Nr. / Serial No.

40510E

Numéro série

Baujahr / Year of construction

8/2012

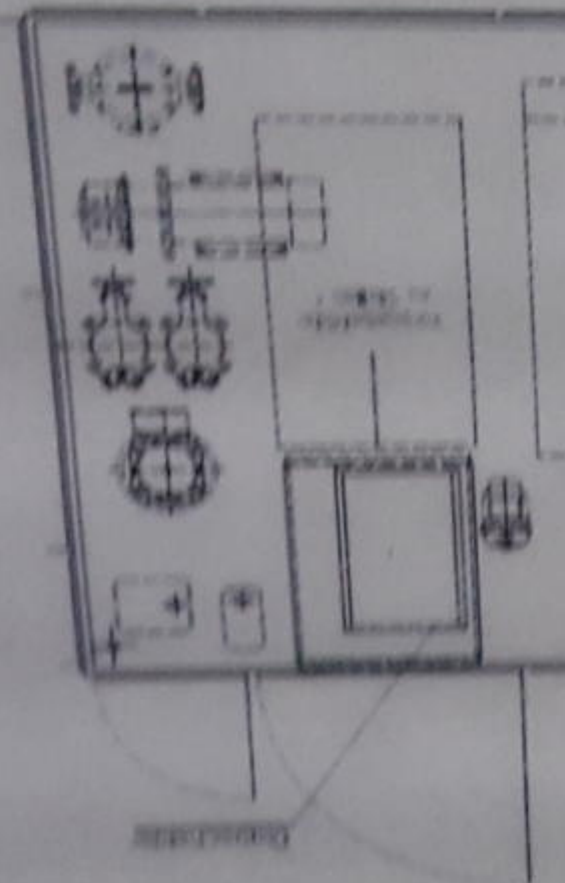
Année de fabrication

Stromart / Kind of current



Abbildung 1: Motor im Normalbetrieb offen sein

Rot

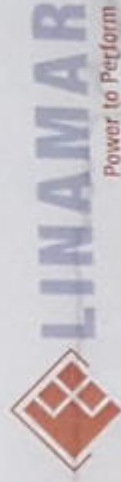


Becken 1

Spritz- und Punktspritzwaschen inklusive Druckumfluten

Tankvolumen		1
Soil-Temperatur		60°C
Medium	Konzentration	Men
Surter 533	441%	
Surter 084	1.810,2%	
auto. Dosierung 8533		0,00/
auto. Dosierung 8084		0,00/

Fluidmanagement



Anlage: Roll Waschmaschine (OP80/OP90E)				440.04.901
Handelsname				
Hersteller / Lieferant				
Telefonnummer				
Einsatzkonzentration		06251/ 171 767		
Eingriffsgrenzen		0,4% <u>+ 0,2%</u>		
Refraktometerfaktor		entfällt		
Titrationsfaktor (Castrol ML)		0,21		
Nitritgehalt		bis 20		
		bis 27		



SIEMENS

SIMATIC PANEL

TOUCH

79

A2M; Fahrzeugen zurückvor
Isposition: in Station 3
1641,9 mm

Zielfahrt,
nach;

Zielfahrt,
nach;

Station 4

Station 1













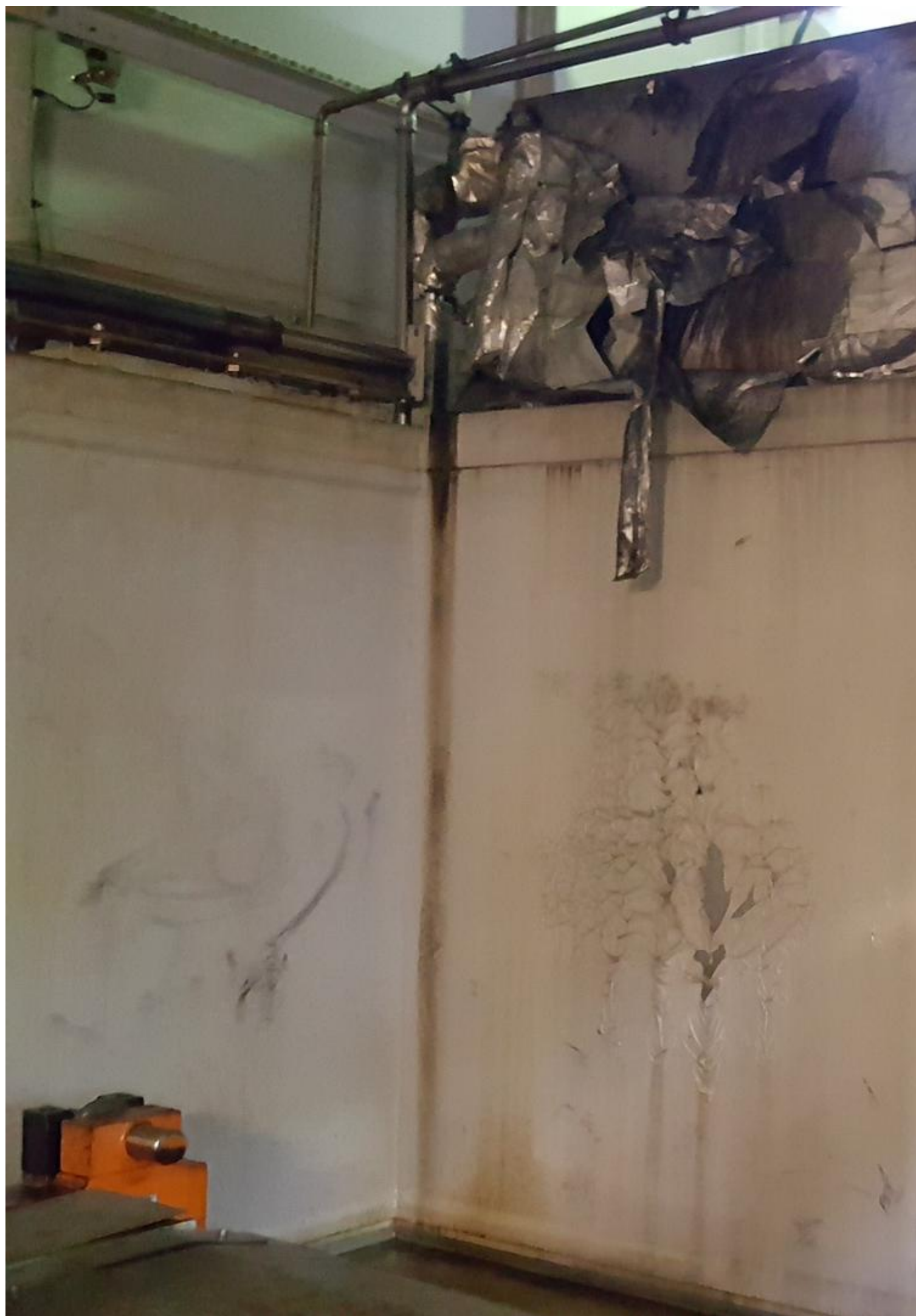
















Video:



Asset-Trade

Assessment and Sale of Used Assets world wide

Am Sonnenhof 16

47800 Krefeld

Germany

Tel.: +49 2151 32500 33

Fax.: +49 2151 65 29 22

Email: info@asset-trade.de

Web.: <https://www.asset-trade.de/en>

Generated on 16.12.2025

© Copyright 2025 - [Asset-Trade](#)

Page