

Image not found or type unknown



Ref. No.:

911-03121749

## **Overview and Technical Data:**

# **ZEISS - Pro-Select Y1600 Z2500 CMM**

**[CARL ZEISS](#)**

2B

Year of Build:  
Jan 2005

## **Description:**

# **Used CARL ZEISS Pro-Select Y1600 Z2500**

Basic equipment of 27 + L / 80 ? 70 [m] at 16-24 ° C

Software: PRO SELECT 125782-3-CMM-OS 4.10

Last calibration: 2014

---

Advantages of ZEISS Pro are:

- Trapezoidal stand and horizontal arm for maximum precision and dynamics
- Double-sided collision protection
- All-round ground level access to the measuring range
- Easy accessibility to maintenance-relevant parts
- Continuous rotary swivel joint CSC with high torque and high dynamics
- Bend protection for sensor carrier, optional
- Optical sensor ZEISS EagleEye for a significant reduction of the measuring time

The following premium options can be added in addition to the ZEISS PRO:

- Full cover for protection against contamination and thermal insulation
- Temperature compensation for higher accuracy with temperature fluctuations
- Option "Performance" for a 50% higher maximum acceleration
- "High accuracy" option for approximately 30% lower measurement error (in combination with full panel and temperature compensation)

## **Technical Data:**

## **Technical Data:**

Control:  
[CNC](#)

## **Buyer Information:**

Condition:  
[Very good condition](#)

Available:

[Sold](#)

Sold as:

[EXW \(Ex Works - Incoterm\)](#)

VAT:

[19 %](#)

Buyers Premium:

[16 %](#)

Location:  
Spain

**Images:**







DEM







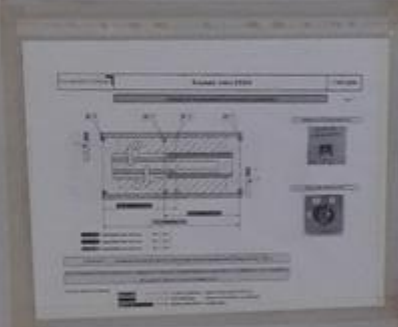




ST1 83

MAQUINA VLC 377  
MASTER

N° BIEN:  
830774



REJ. MUELLEN FÜRCHERUNG

STOP

START

REVERSE

STOP

STOP

STOP

ZEISS



ST2

MAQUINA VLC 373  
SLAVE

REJ. MUELLEN FÜRCHERUNG

STOP

START

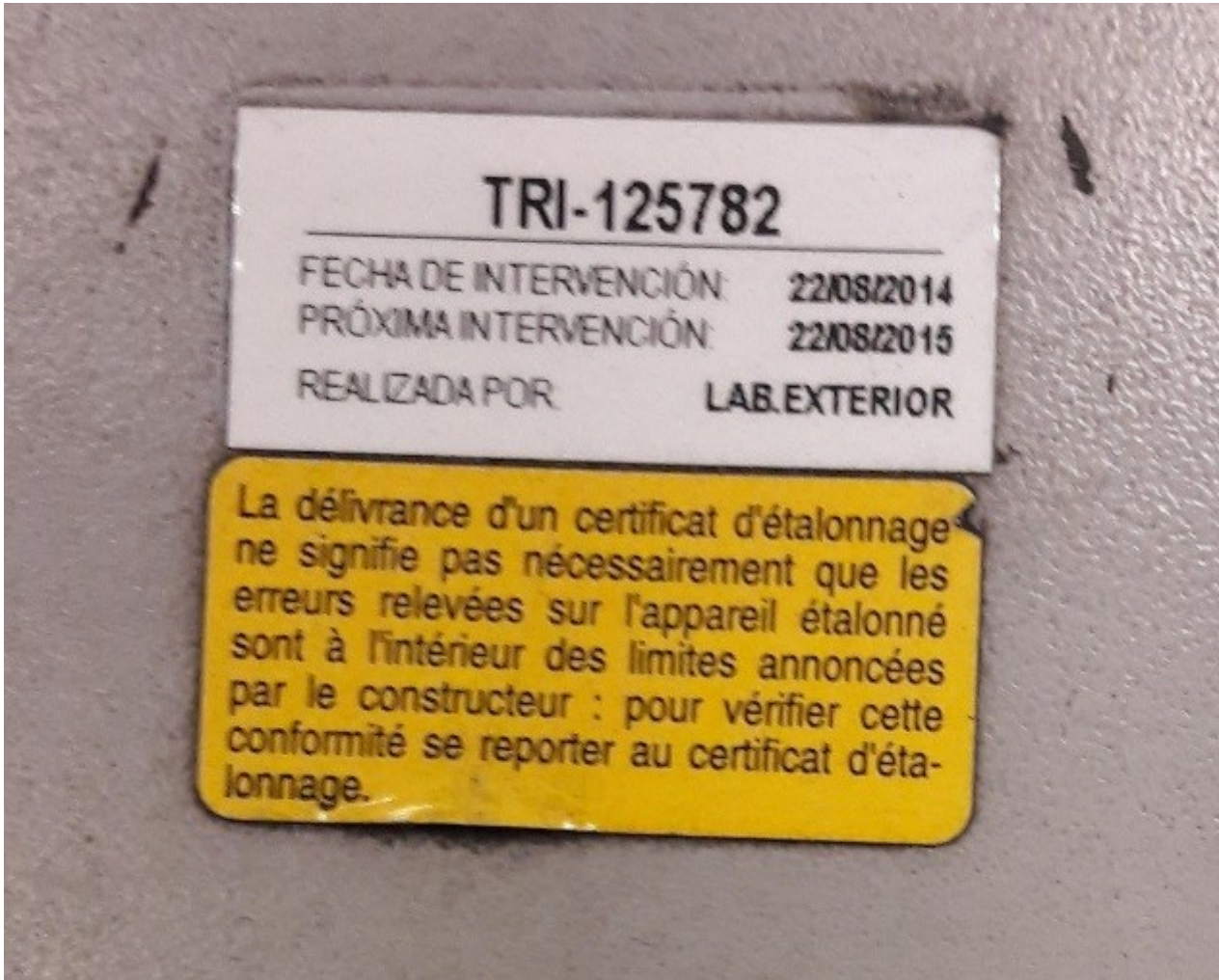
REVERSE

STOP

STOP

ZEISS





**TRI-125782**

FECHA DE INTERVENCIÓN: 22/08/2014  
PRÓXIMA INTERVENCIÓN: 22/08/2015  
REALIZADA POR: LAB. EXTERIOR

La délivrance d'un certificat d'étalonnage ne signifie pas nécessairement que les erreurs relevées sur l'appareil étalonné sont à l'intérieur des limites annoncées par le constructeur : pour vérifier cette conformité se reporter au certificat d'étalonnage.

**Carl Zeiss**

D-73446 Oberkochen

PRO-SELECT Y-1600 Z-2500

636001-9021-000

Ser.Nr.: 125782

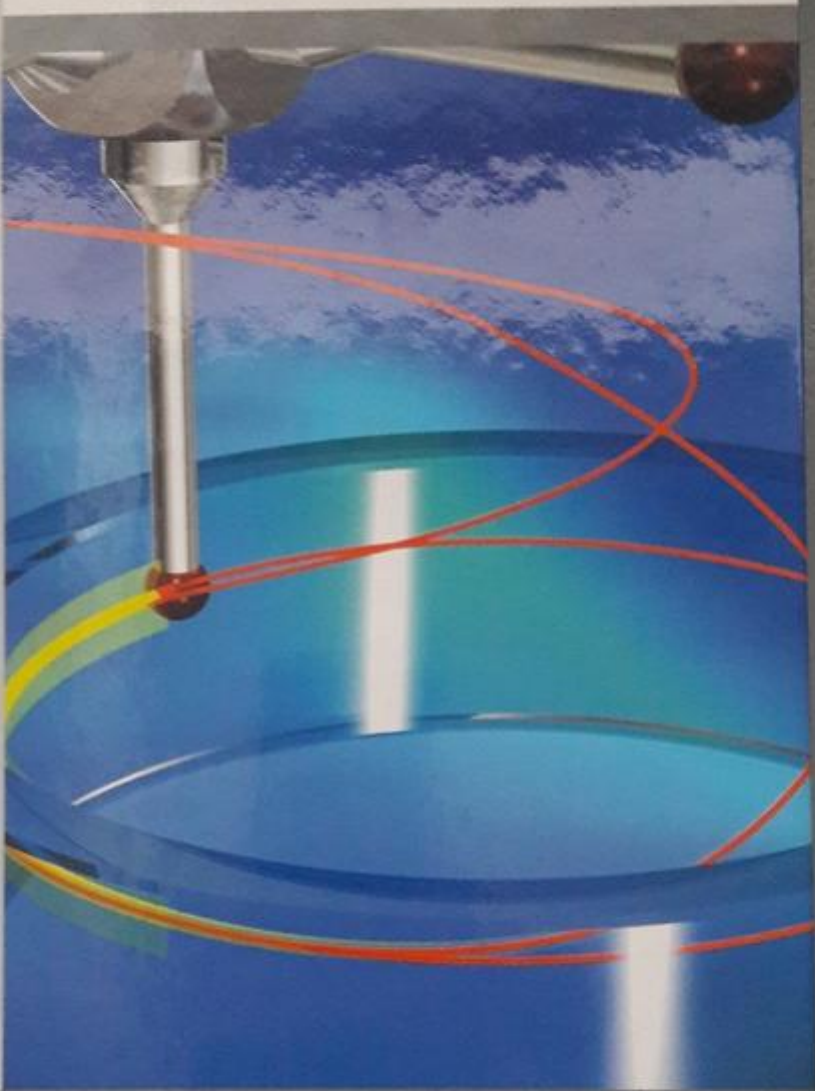
Baujahr: 2005



DT/DI



# SOFTWARE



We make it visible.

PSA CITROEN, S.A. - PRO SELECT 125782-3 - CMM\_OS 4.10



Asset-Trade

Assessment and Sale of Used Assets world wide

Am Sonnenhof 16

47800 Krefeld

Germany

Tel.: +49 2151 32500 33

Fax.: +49 2151 65 29 22

Email: [info@asset-trade.de](mailto:info@asset-trade.de)

Web.: <https://www.asset-trade.de/en>

Ref. No.:

911-03121749

**Overview and Technical Data:**

**ZEISS - Pro-Select Y1600 Z2500 CMM**

**[CARL ZEISS](#)**

2B

Year of Build:  
Jan 2005

## **Description:**

# **Used CARL ZEISS Pro-Select Y1600 Z2500**

Basic equipment of 27 + L / 80 ? 70 [m] at 16-24 ° C

Software: PRO SELECT 125782-3-CMM-OS 4.10

Last calibration: 2014

---

Advantages of ZEISS Pro are:

- Trapezoidal stand and horizontal arm for maximum precision and dynamics
- Double-sided collision protection
- All-round ground level access to the measuring range
- Easy accessibility to maintenance-relevant parts
- Continuous rotary swivel joint CSC with high torque and high dynamics
- Bend protection for sensor carrier, optional
- Optical sensor ZEISS EagleEye for a significant reduction of the measuring time

The following premium options can be added in addition to the ZEISS PRO:

- Full cover for protection against contamination and thermal insulation
- Temperature compensation for higher accuracy with temperature fluctuations
- Option "Performance" for a 50% higher maximum acceleration
- "High accuracy" option for approximately 30% lower measurement error (in combination with full panel and temperature compensation)

## **Technical Data:**

## **Technical Data:**

Control:  
[CNC](#)

## **Buyer Information:**

Condition:  
[Very good condition](#)

Available:

[Sold](#)

Sold as:

[EXW \(Ex Works - Incoterm\)](#)

VAT:

[19 %](#)

Buyers Premium:

[16 %](#)

Location:  
Spain

**Images:**













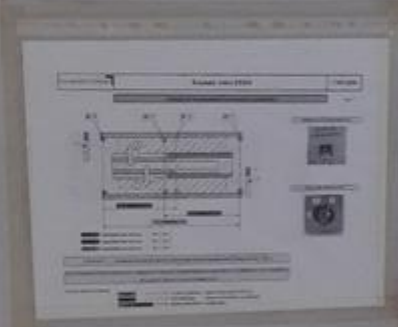




ST1 83

MAQUINA VLC 377  
MASTER

N° BIEN:  
830774



Control panel for the top unit, featuring a red emergency stop button, a black emergency stop handle, and several indicator lights and switches. Labels include 'STOP', 'MUELLEN', 'FUCHSBAUWERK', and 'MOTORSTARTER'. A key is inserted into a lock mechanism.

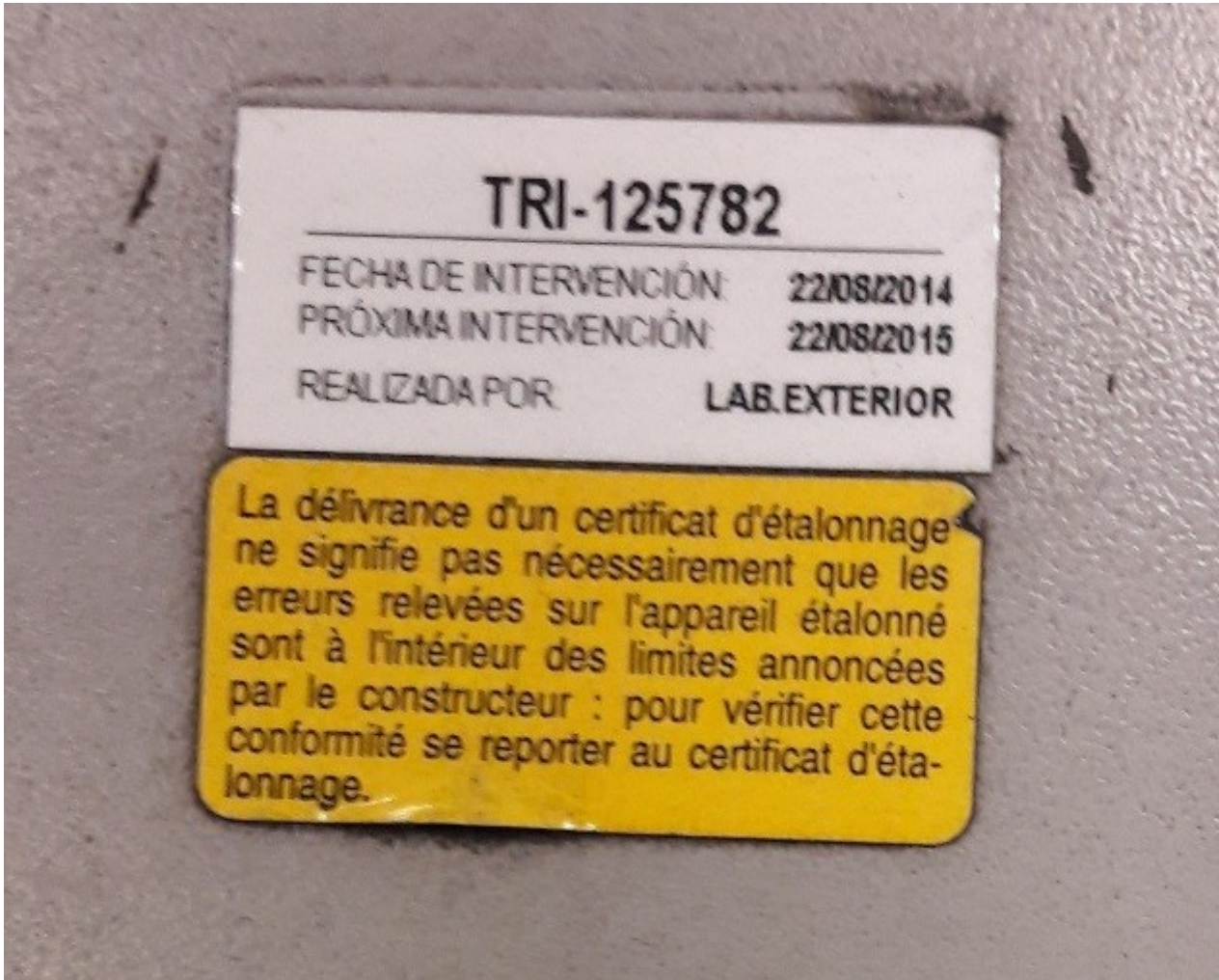


ST2

MAQUINA VLC 375  
SLAVE

Control panel for the bottom unit, featuring a red emergency stop button, a black emergency stop handle, and several indicator lights and switches. Labels include 'STOP', 'MUELLEN', 'FUCHSBAUWERK', and 'MOTORSTARTER'. A key is inserted into a lock mechanism.





**TRI-125782**

FECHA DE INTERVENCIÓN: 22/08/2014  
PRÓXIMA INTERVENCIÓN: 22/08/2015  
REALIZADA POR: LAB. EXTERIOR

La délivrance d'un certificat d'étalonnage ne signifie pas nécessairement que les erreurs relevées sur l'appareil étalonné sont à l'intérieur des limites annoncées par le constructeur : pour vérifier cette conformité se reporter au certificat d'étalonnage.

**Carl Zeiss**

D-73446 Oberkochen

PRO-SELECT Y-1600 Z-2500

636001-9021-000

Ser.Nr.: 125782

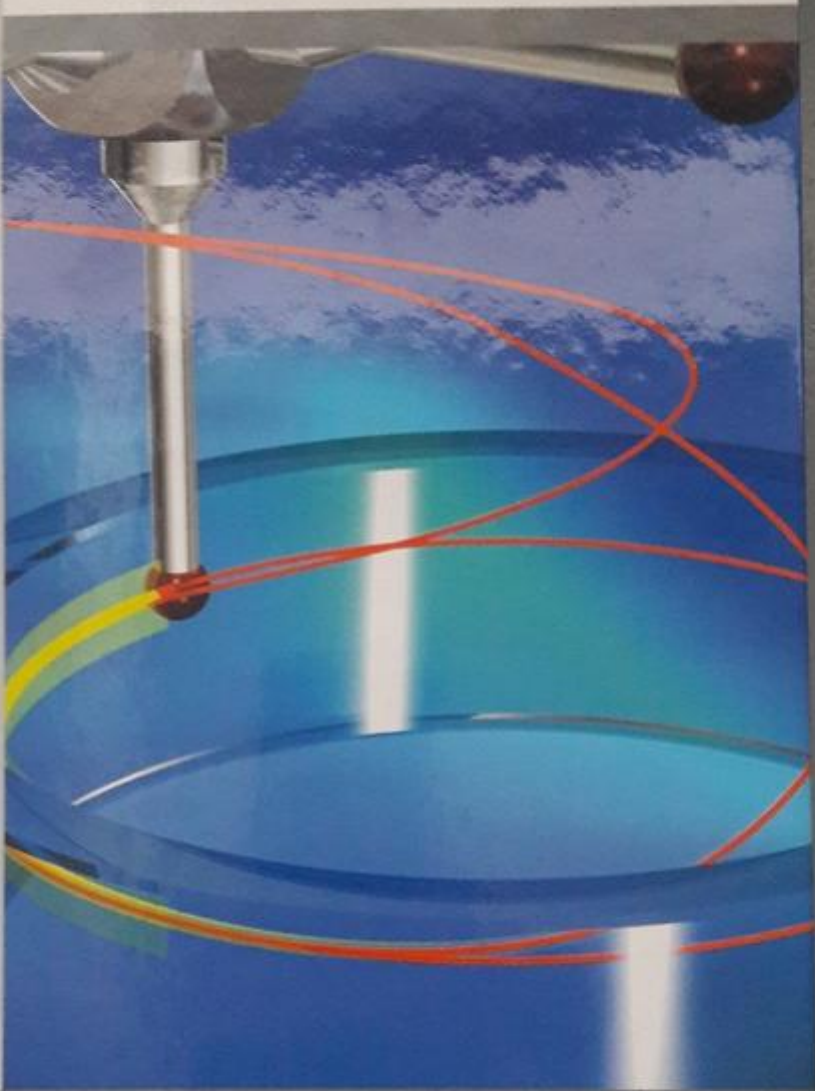
Baujahr: 2005



DT/DI



# SOFTWARE



We make it visible.

PSA CITROEN, S.A. - PRO SELECT 125782-3 - CMM\_OS 4.10



Asset-Trade

Assessment and Sale of Used Assets world wide

Am Sonnenhof 16

47800 Krefeld

Germany

Tel.: +49 2151 32500 33

Fax.: +49 2151 65 29 22

Email: [info@asset-trade.de](mailto:info@asset-trade.de)

Web.: <https://www.asset-trade.de/en>

Generated on 26.05.2026

© Copyright 2026 - [Asset-Trade](#)

Page