

Image not found or type unknown



Ref. No.:

924-06111039

## Overview and Technical Data:

# DECKEL - DMC 60S 6 axis bar milling machine

## DMG DECKEL



# DMG

Year of Build:

Jan 2003

## Description:

### Used DECKEL MAHO DMC 60 S 6-axis bar milling machine

CNC control: Sinumerik 840D Powerline - ShopMill.

Hours at 31321 / Spindle Hours 11969

- travels
  - X: 760 mm
  - Y: 460 mm
  - Z: 560 mm
  - A axis NC rotary axis
  - B-axis NC swivel
  - Swiveling head +/-: NC
- Inner cone: HSK-A 63.
- Spindle speed: 20-12,000 revolutions per minute.
- Spindle drive: 28/19 kW

- Tool changer with 60 places.
- tailstock
- Bar loader diameter 10 to 105 mm
- Stakes length 200 - 1100 mm.
- chip conveyor
- Machine dimensions: 6 x 5 x 3 m

## **Technical Data:**

## **Technical Data:**

Control:

[SINUMERIK 840D](#)

Machine Hours:

31.321 hrs.

Spindle Hours:

11.969 hrs.

Spindle Speed:

12.000 rpm

Tool Capacity:

60 x

## **Travels:**

X-Axis:

760 mm

Y-Axis:

460mm

Z-Axis:

560 mm

## **Dimensions and Weight:**

Weight:

11.000 kg

## **Buyer Information:**

Condition:

[Very good condition](#)

Availability:

[Immediately](#)

Sold as:

[EXW \(Ex Works - Incoterm\)](#)

VAT:

[19 %](#)

Buyers Premium:

[16 %](#)

Location:

Germany

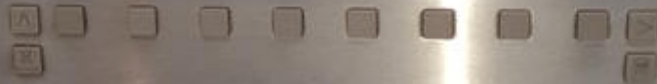
**Images:**



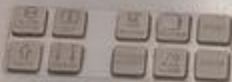


SIEMENS

Sinumerik 840 D *powerline*



SIEMENS







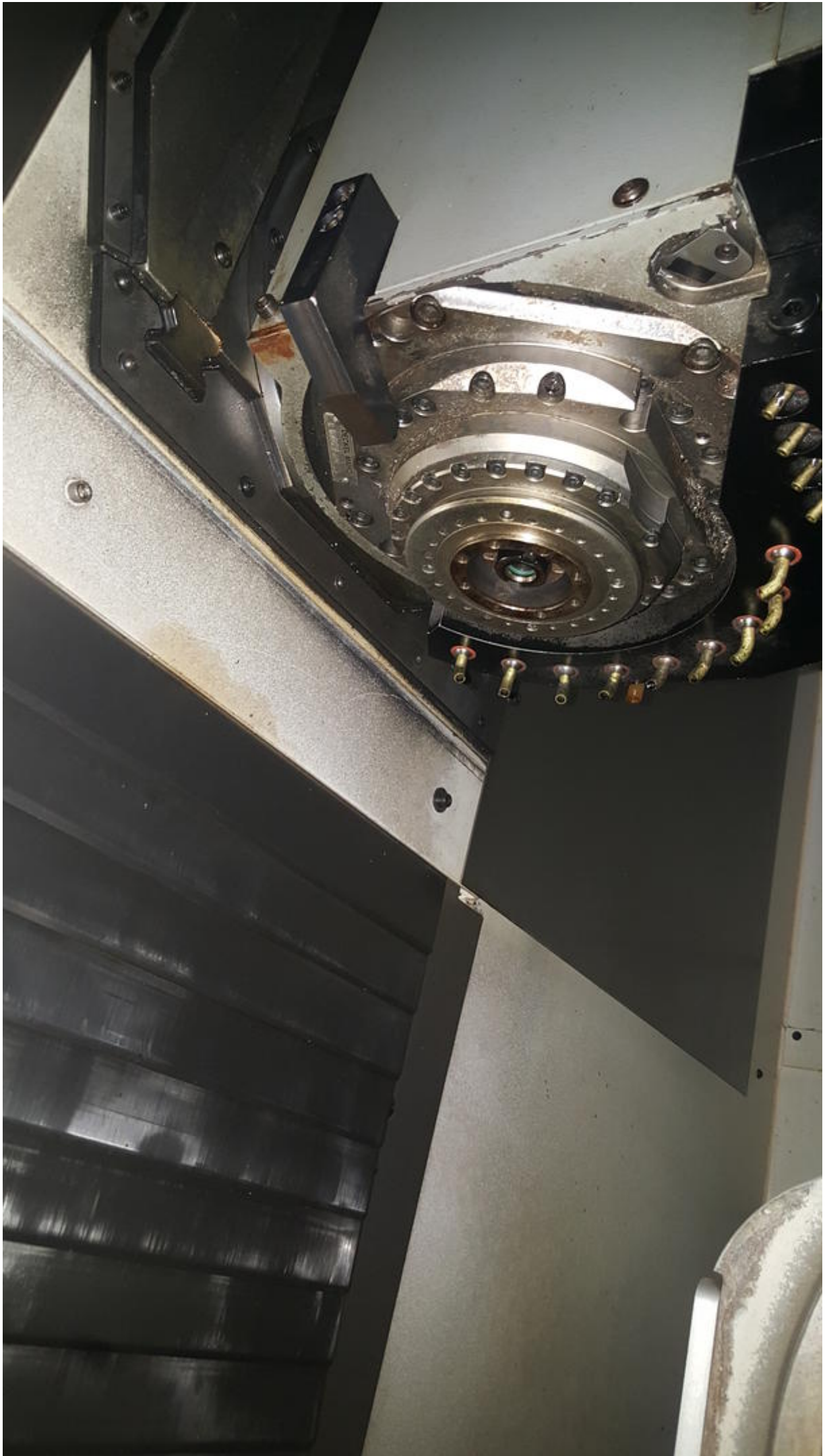














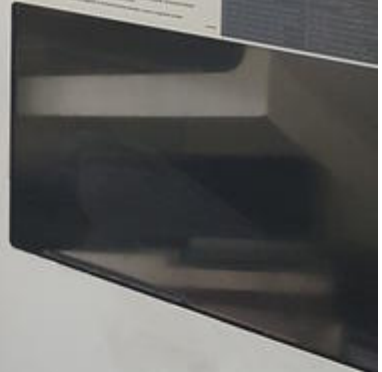




# DMC 60 S DECKEL M

**Attention**  
This room is filled with special Elektronische  
equipment.  
Finger grabbing and pressing knobby  
Components are allowed for the Expert's only.  
Please keep still and only watching  
authorized the Saketigrens.  
Otherwise you will be outflowed and kicked  
anywhere.  
**The Experts!**

Handwritten text and diagrams on a poster, including a small schematic diagram.



Siemens 840

The control console features a monochrome screen at the top, a row of function buttons below it, a large keypad with various colored buttons (red, green, yellow, black), and a prominent red emergency stop button. At the bottom, there are two keyholes and several indicator lights.

















**Inte**

**Kompakt-Filteranlage**

Filterfläche

Einfüllvolumen

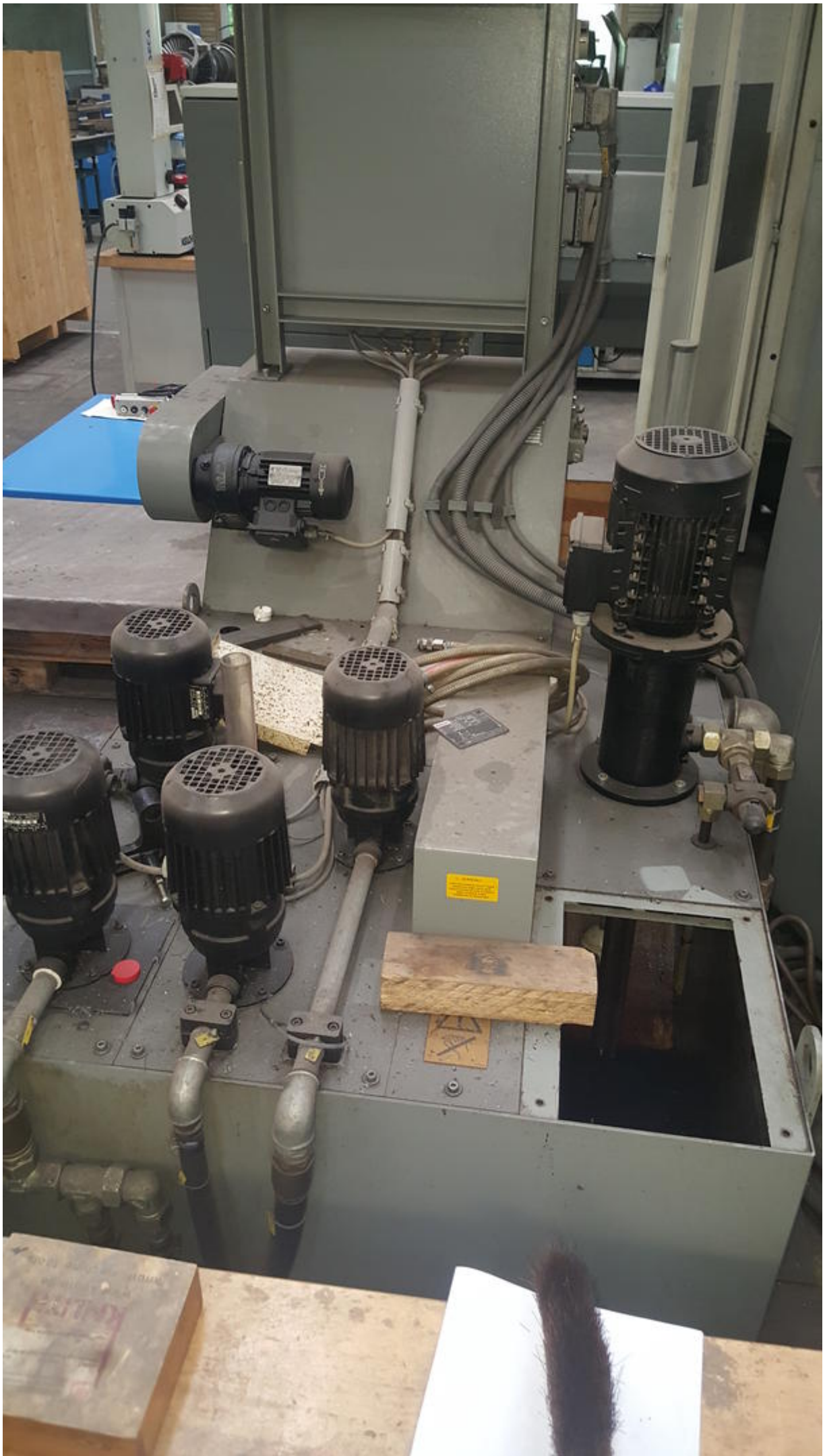
Auftrags- Nr.

Baujahr

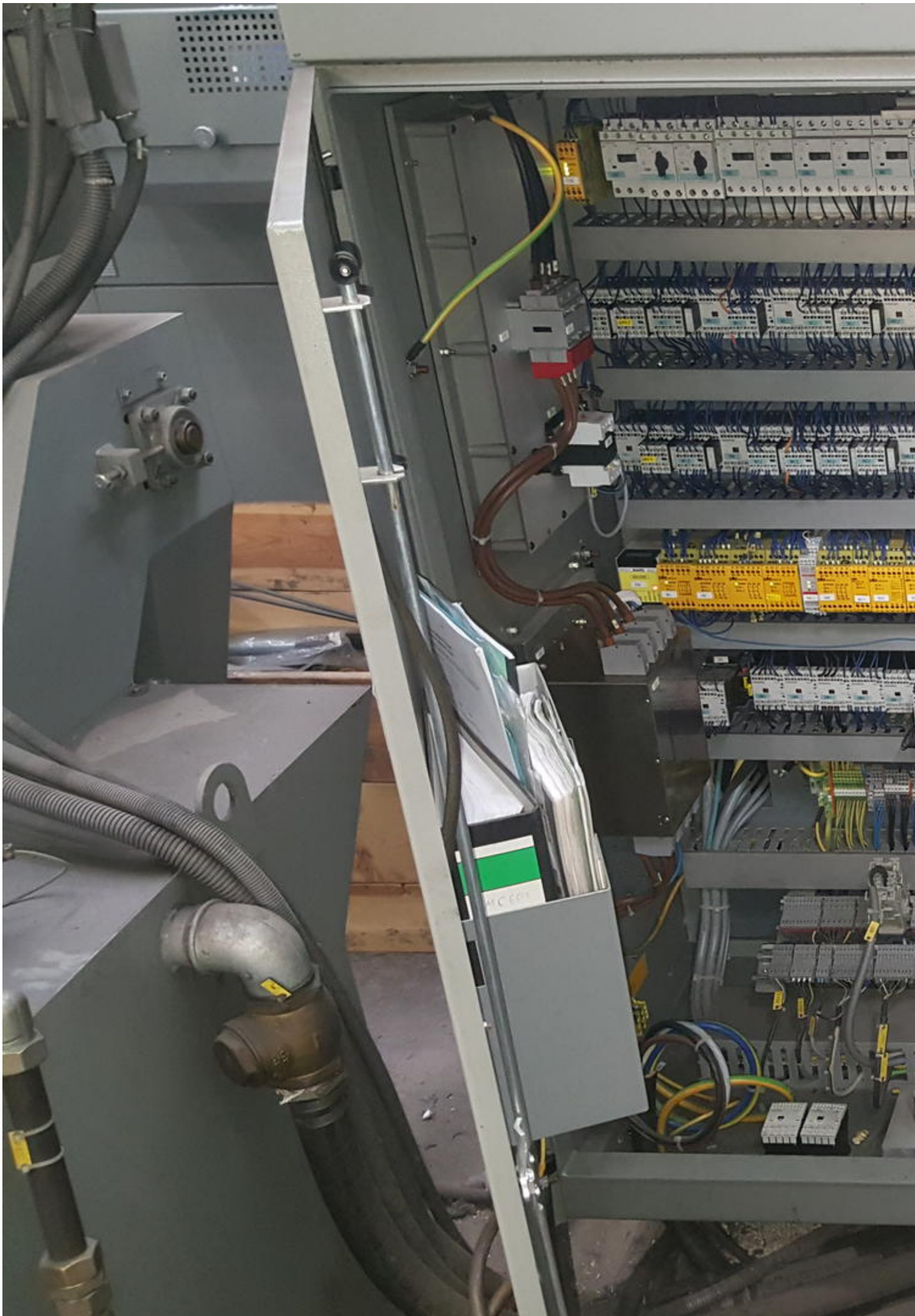
---

Interlin Jostigen GmbH Niederkasseler Str. 7 D-

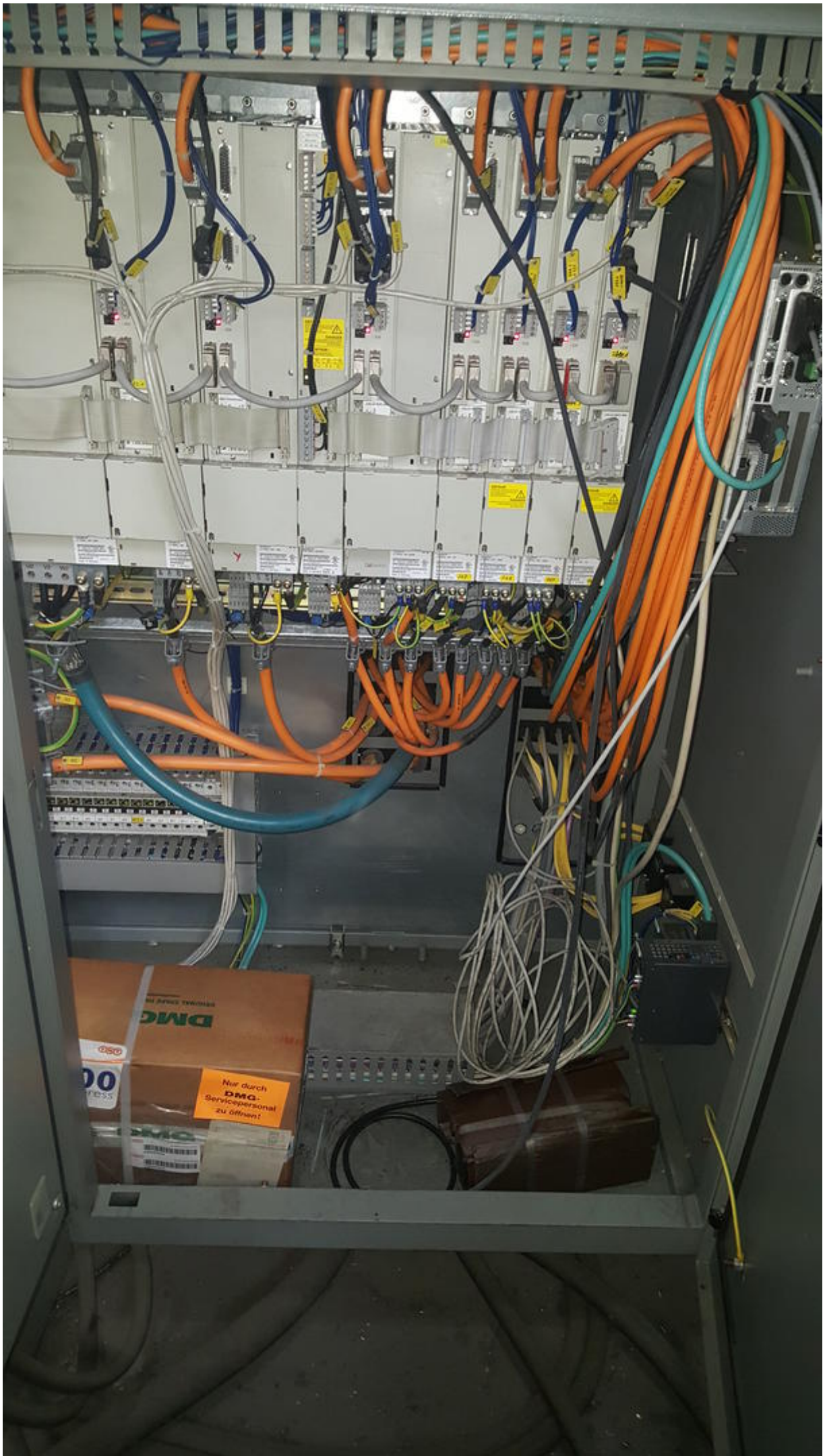








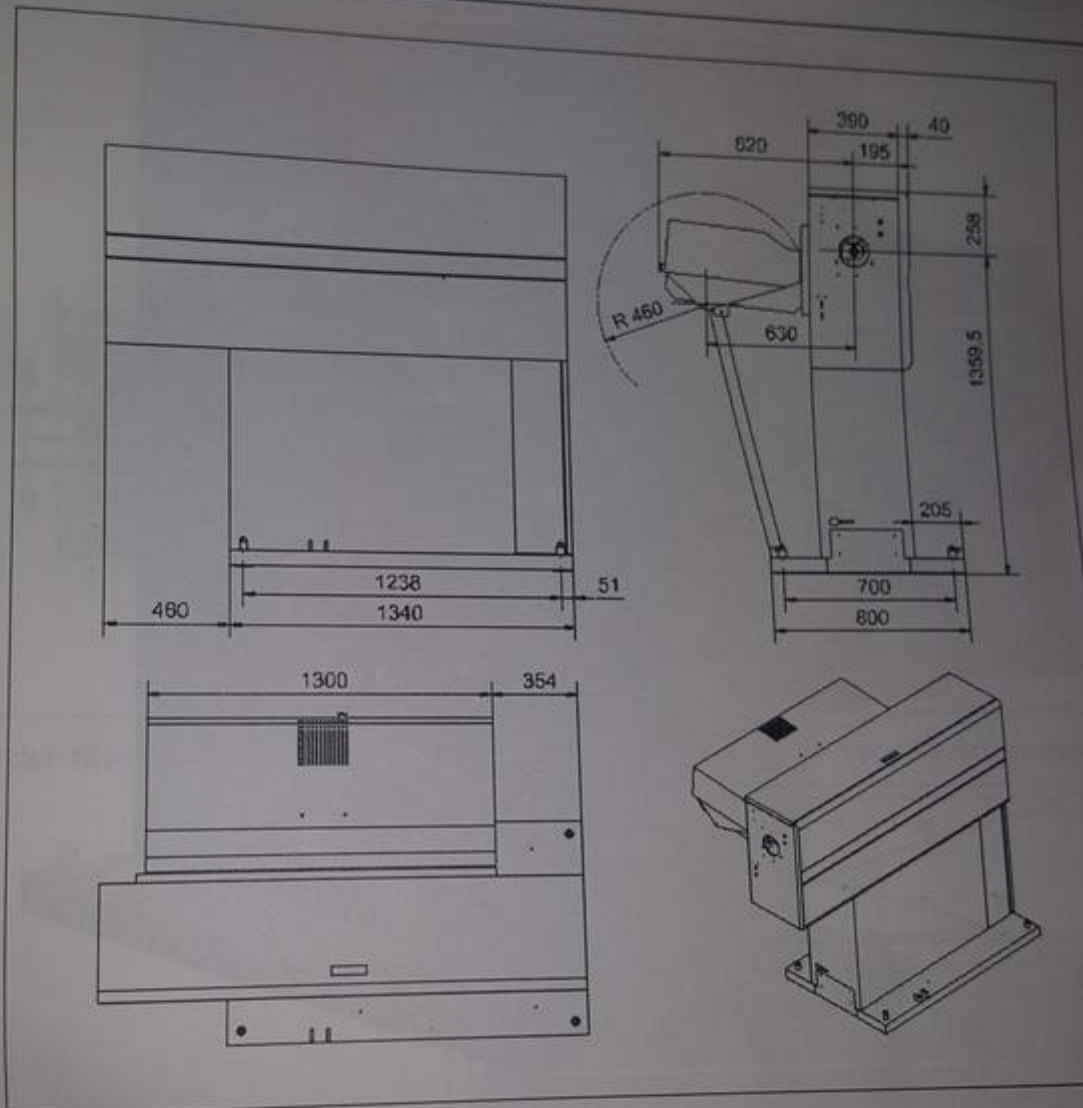






# 1 Installation des Stangenlademagazins

## 1.1 Maßzeichnung - Platzbedarf





# Geprüft

nach BGV .....

durch .....

**nächste Prüfung**





ufelfertigung  
ing services

MAHO





















SIEMENS

Inbetrieb  
nahme

CHAN1



Kanal unterbrochen



Halt: kein NC - Re

4060 ↓ : Sta

Maschinenkonfiguration

Maschinenachse

Index Name

1 X1

2 Y1

3 Z1

4 A1

DECKEL MA

Version 1.0

Schlüssel  
schalter

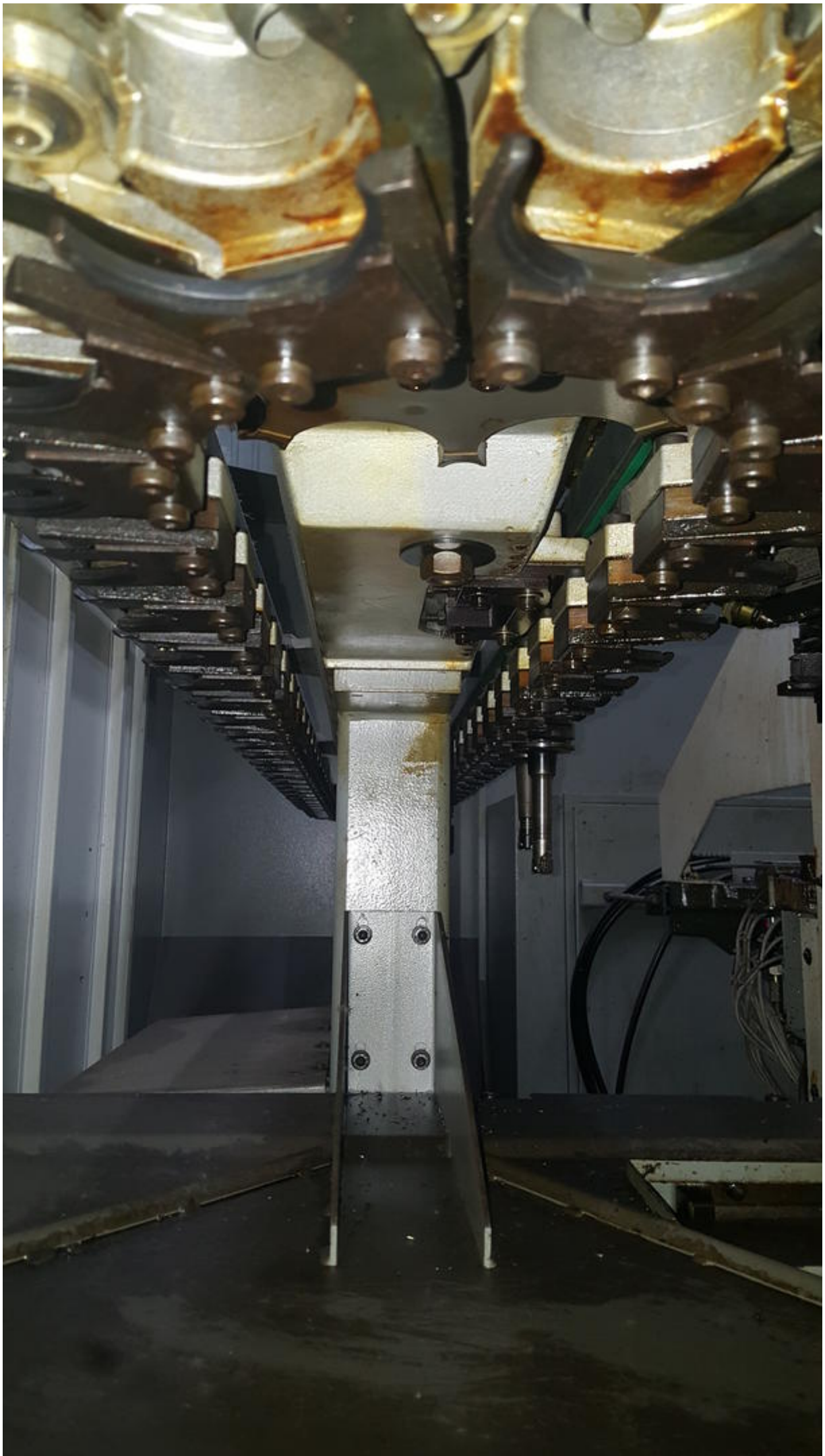
Bus  
Dia





















Asset-Trade

Assessment and Sale of Used Assets world wide

Am Sonnenhof 16

47800 Krefeld

Germany

Tel.: +49 2151 32500 33

Fax.: +49 2151 65 29 22

Email: [info@asset-trade.de](mailto:info@asset-trade.de)

Web.: <https://www.asset-trade.de/en>

Ref. No.:

924-06111039

**Overview and Technical Data:**

# DECKEL - DMC 60S 6 axis bar milling machine

## DMG DECKEL

The logo for DMG, consisting of the letters 'DMG' in a bold, white, sans-serif font, set against a dark teal background.

Year of Build:  
Jan 2003

### **Description:**

## **Used DECKEL MAHO DMC 60 S 6-axis bar milling machine**

CNC control: Sinumerik 840D Powerline - ShopMill.

Hours at 31321 / Spindle Hours 11969

- travels
  - X: 760 mm
  - Y: 460 mm
  - Z: 560 mm
  - A axis NC rotary axis
  - B-axis NC swivel
  - Swiveling head +/-: NC
- Inner cone: HSK-A 63.
- Spindle speed: 20-12,000 revolutions per minute.
- Spindle drive: 28/19 kW
- Tool changer with 60 places.
- tailstock
- Bar loader diameter 10 to 105 mm
- Stakes length 200 - 1100 mm.
- chip conveyor
- Machine dimensions: 6 x 5 x 3 m

## **Technical Data:**

## **Technical Data:**

Control:

[SINUMERIK 840D](#)

Machine Hours:

31.321 hrs.

Spindle Hours:

11.969 hrs.

Spindle Speed:

12.000 rpm

Tool Capacity:

60 x

## **Travels:**

X-Axis:

760 mm

Y-Axis:

460mm

Z-Axis:

560 mm

## **Dimensions and Weight:**

Weight:

11.000 kg

## **Buyer Information:**

Condition:

[Very good condition](#)

Availability:

[Immediately](#)

Sold as:

[EXW \(Ex Works - Incoterm\)](#)

VAT:

[19 %](#)

Buyers Premium:

[16 %](#)

Location:

Germany

## **Images:**





SIEMENS

Sinumerik 840 D *powerline*



SIEMENS







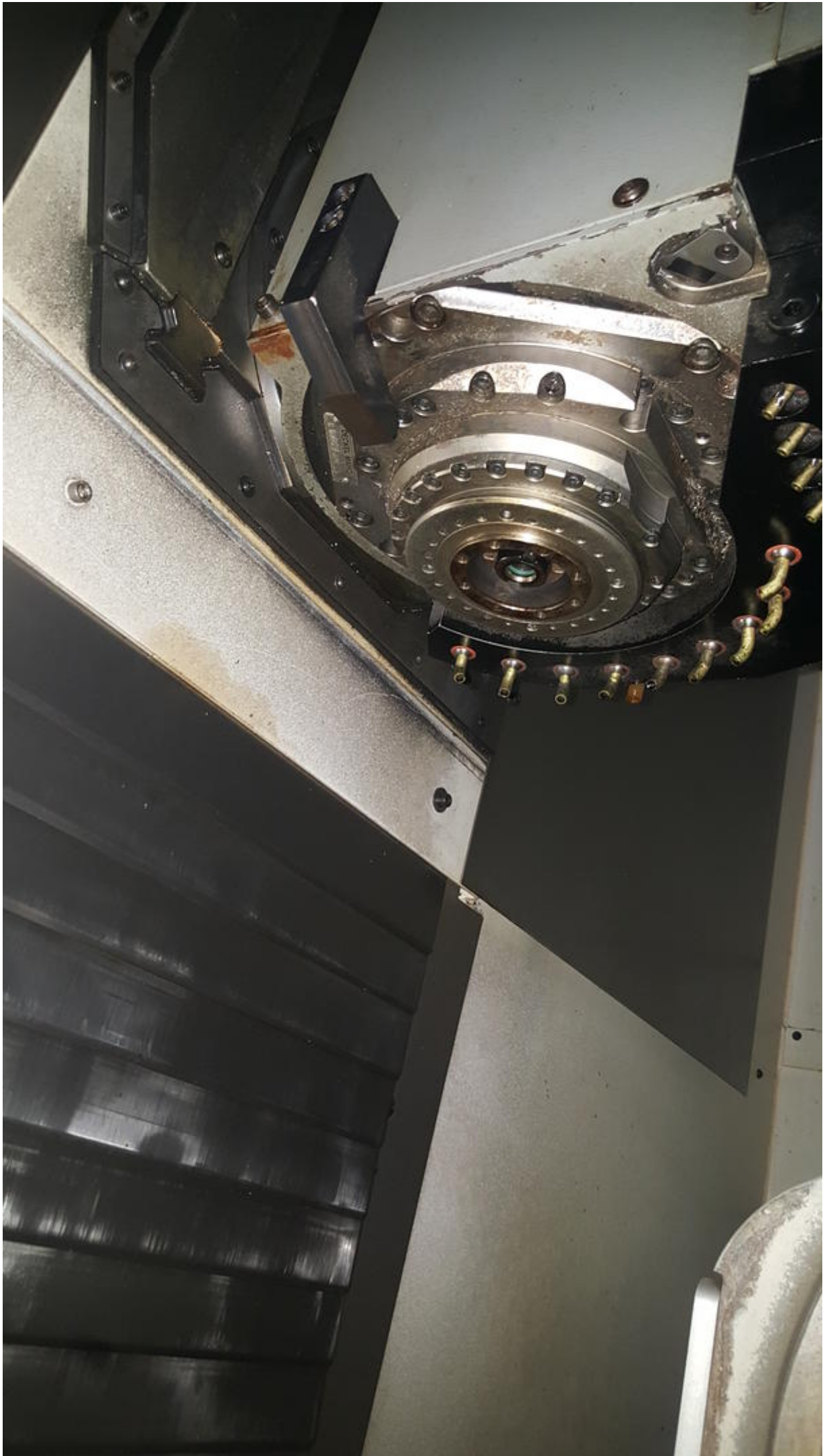
















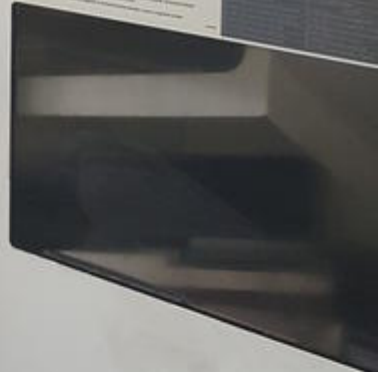


# DMC 60 S DECKEL M

**Attention**  
This room is filled with special Elektronische  
equipment.  
Finger grabbing and pressing knobby  
Components are allowed for the Expert's only.  
Please keep still and only watching  
asknowledged the Sakelsgreen.  
Otherwise you will be outflowed and kicked  
anywhere.

**The Experts!**

Handwritten text and diagrams on a poster, including a small schematic diagram.



Siemens 840 D

The control console features a monochrome screen at the top, a row of function buttons below it, a large keypad with various colored buttons (red, green, yellow, black), and a prominent red emergency stop button. At the bottom, there are two keyholes and several indicator lights.

















**Inte**

**Kompakt-Filteranlage**

Filterfläche

Einfüllvolumen

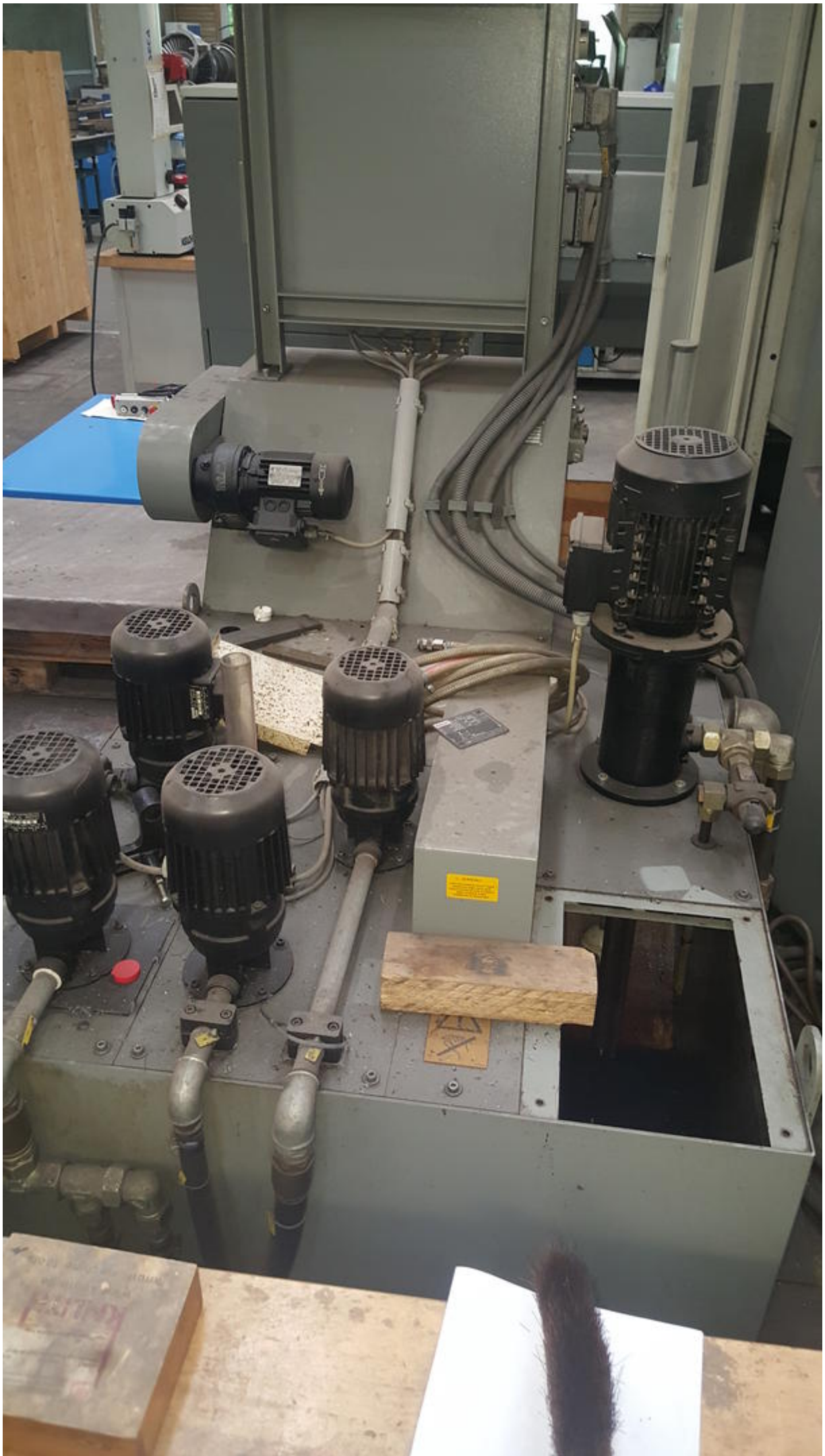
Auftrags- Nr.

Baujahr

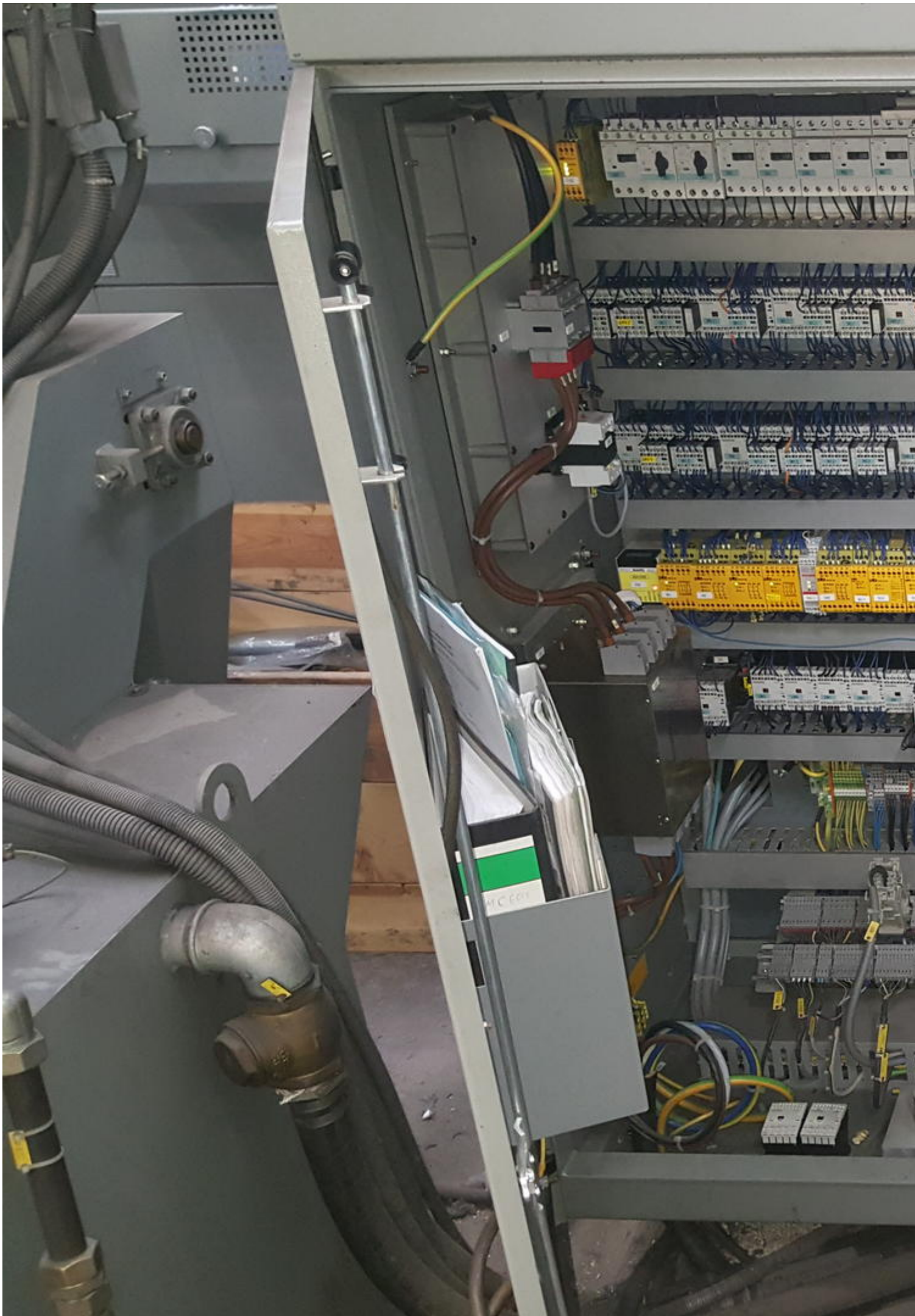
---

Interlin Jostigen GmbH Niederkasseler Str. 7 D-

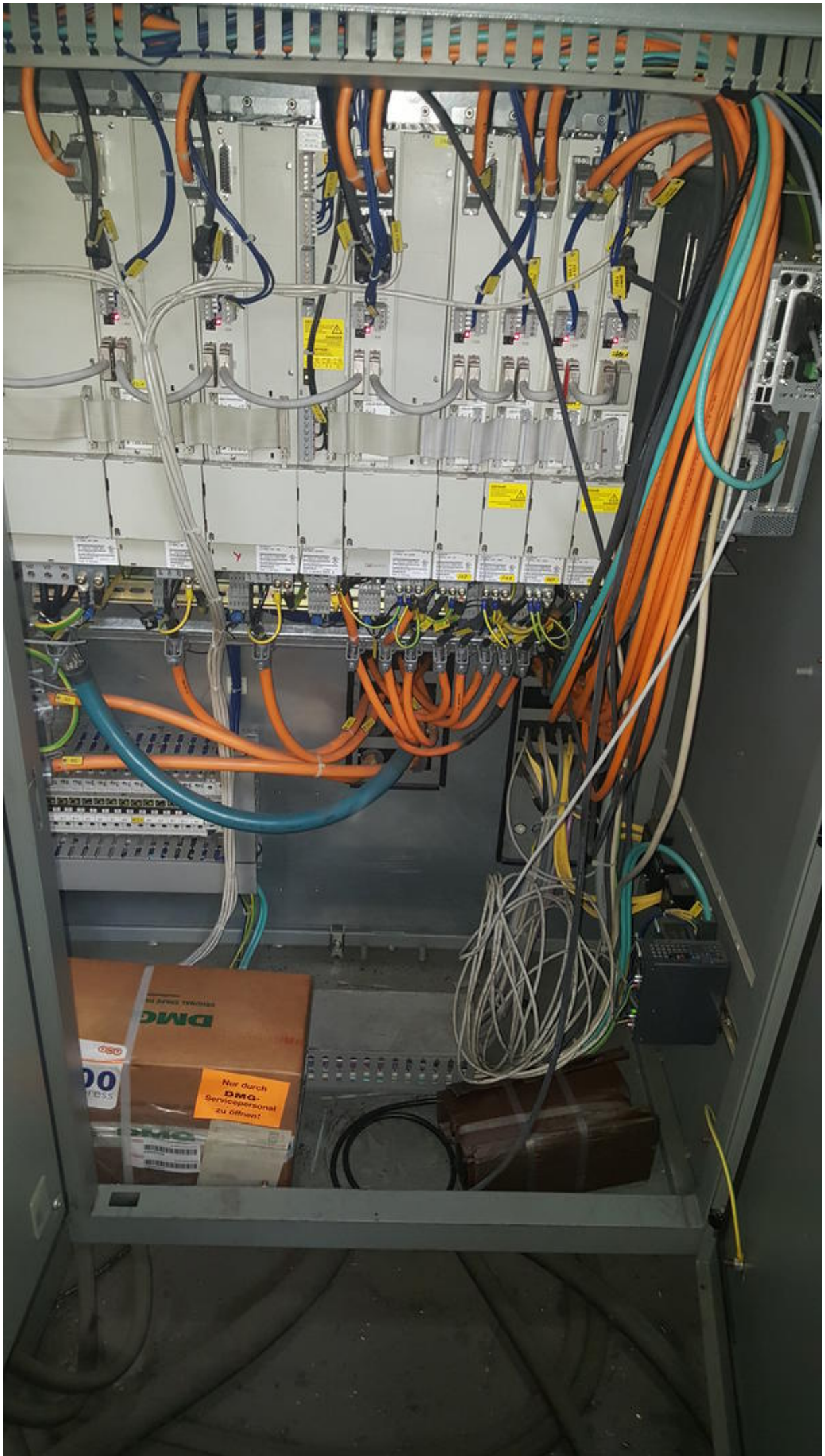








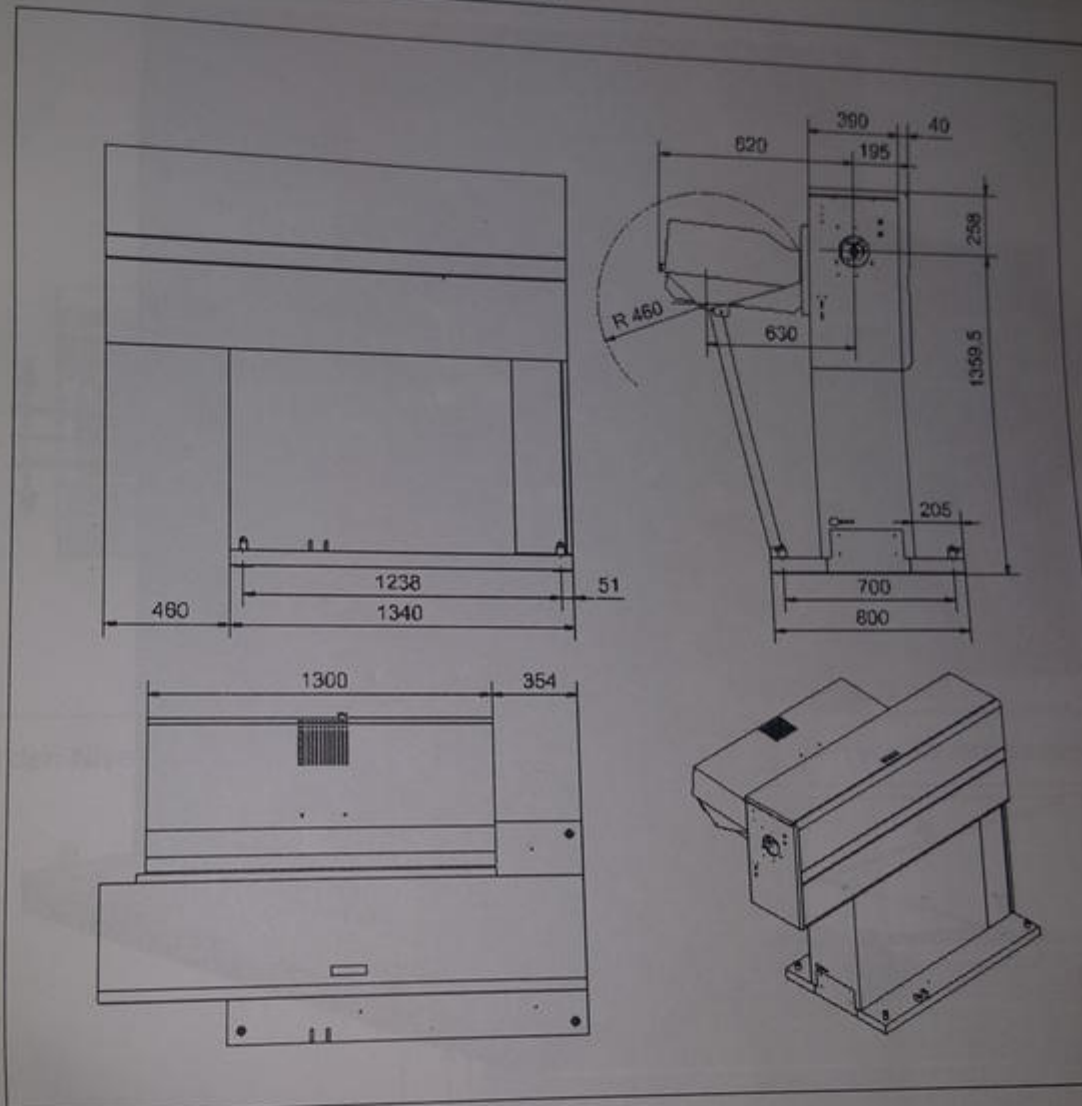






# 1 Installation des Stangenlademagazins

## 1.1 Maßzeichnung - Platzbedarf





# Geprüft

nach BGV .....

durch .....

**nächste Prüfung**





ufelfertigung  
ing services

MAHO



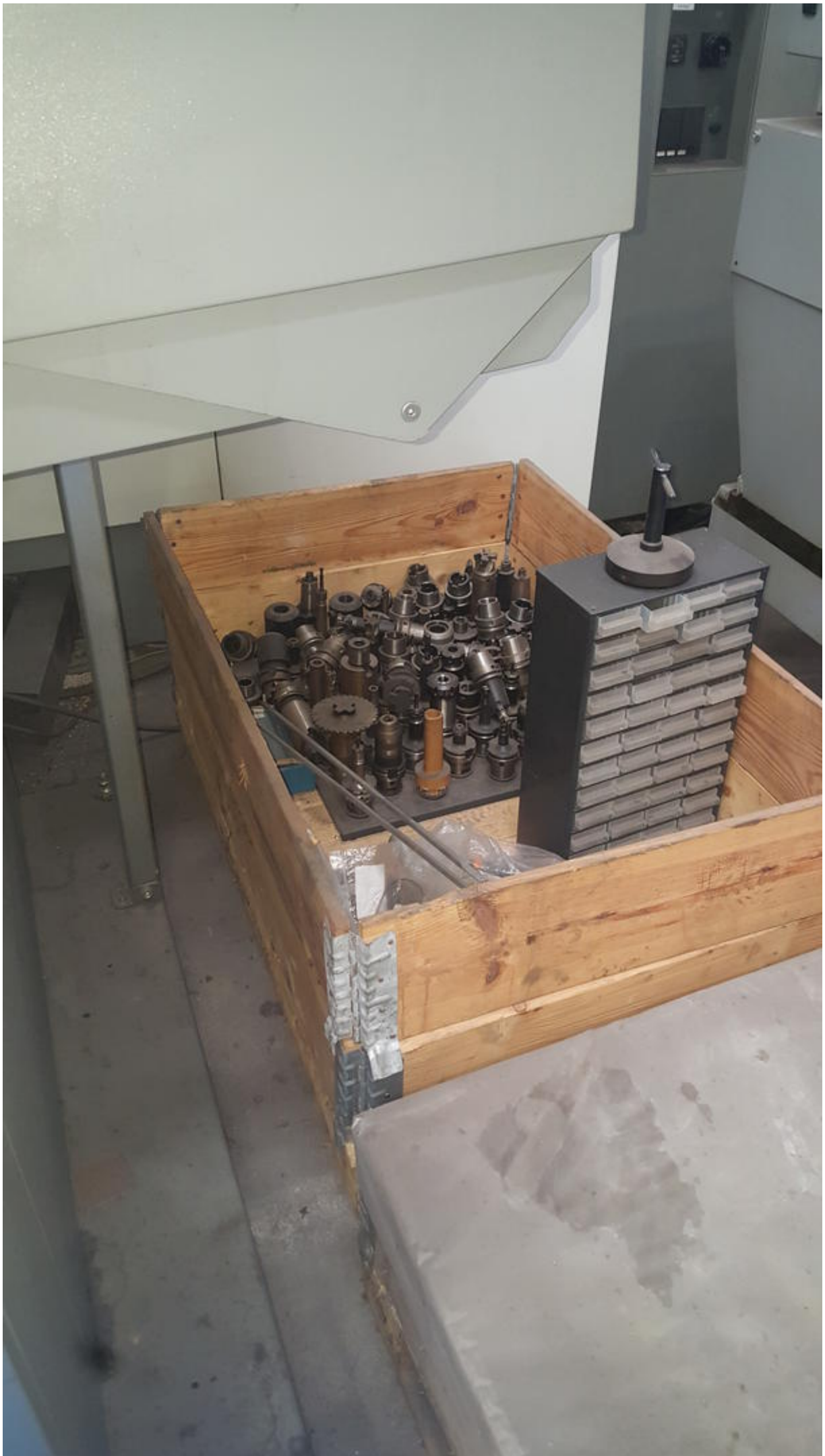




















SIEMENS

Inbetrieb  
nahme

CHAN1

 Kanal unterbrochen

 Halt: kein NC - Re

4060 ↓ : Sta

Maschinenkonfiguration

Maschinenachse

Index Name

1 X1

2 Y1

3 Z1

4 A1

DECKEL MA

Version 1.0

Schlüssel  
schalter

Bus  
Dia















Attention

A white rectangular label containing technical information. It features the word "Attention" at the top, a triangle warning symbol, and several diagrams including a circular diagram with a triangle, a table of specifications, and a schematic diagram of a control system.







Asset-Trade

Assessment and Sale of Used Assets world wide

Am Sonnenhof 16

47800 Krefeld

Germany

Tel.: +49 2151 32500 33

Fax.: +49 2151 65 29 22

Email: [info@asset-trade.de](mailto:info@asset-trade.de)

Web.: <https://www.asset-trade.de/en>

Generated on 16.04.2026

© Copyright 2026 - [Asset-Trade](#)

Page