

Image not found or type unknown



Ref. No.:
1020-05131318

Overview and Technical Data:

SPINNER - U5-620 5 axis

SPINNER

SPIN

Year of Build:
Jan 2012

Description:

Used SPINNER U5-620 5-Axis Simultaneously

CNC Control Heidenhain TNC620

5-axis model with large turn-tilt table integrated in the machine bed

Technical data:

- Work area / travel paths
 - X axis 620 mm
 - Y axis 520 mm
 - Z axis - 460 mm
 - C axis 360 °
 - B axis + 5 ° (+ 50 °) / -110 °
 - Min. Distance spindle nose - table 150 mm
 - Max. Distance spindle nose - table 610 mm
 - Feed / rapid traverse 48 m / min
- Spindle
 - Turning speed 12,000 rpm
 - Power Pmax 22 kW
 - Torque Mmax 135 Nm
 - 26 bar inside cooling
- Tools
 - Number of tool stations 32 Max. High-speed automatic tool changer as double-arm changer
 - Tool diameter 76 mm
 - at free neighboring places 127 mm
 - Max. Tool length 290 mm
 - Max. Tool mass 7 kg
 - Tool Holder SK40
- Table
 - Table dimensions Ø 720 x 540 mm
 - Max. Table load 300 kg
 - T-slots 18
- Dimensions (L x D x H) 3,133 x 2,415 x 2,920 mm

Technical Data:

Technical Data:

Control:

[TNC 620](#)

Machine Hours:

23.136 hrs.

Spindle Speed:

12.000 rpm

Tool Capacity:

32 x

Travels:

X-Axis:
620 mm
Y-Axis:
520mm
Z-Axis:
460 mm

Dimensions and Weight:

Height:
2.920 mm
Width:
2.415 mm
Length:
3.133 mm
Weight:
7.100 kg

Buyer Information:

Condition:
[Very good condition](#)
Availability:
[On Request](#)
Sold as:
[EXW \(Ex Works - Incoterm\)](#)
VAT:
[19 %](#)
Buyers Premium:
[16 %](#)
Location:
Turkey

Images:



SP

SPINNER

U-620





HEIDENHAIN

Program run, full sequence
02_T18_MT95_L35.n

NO	FUNCTION	VALUE	UNIT	STATUS
1	TOOL SET 1	100.000	mm	OK
2	TOOL SET 2	100.000	mm	OK
3	TOOL SET 3	100.000	mm	OK
4	TOOL SET 4	100.000	mm	OK
5	TOOL SET 5	100.000	mm	OK
6	TOOL SET 6	100.000	mm	OK
7	TOOL SET 7	100.000	mm	OK
8	TOOL SET 8	100.000	mm	OK
9	TOOL SET 9	100.000	mm	OK
10	TOOL SET 10	100.000	mm	OK
11	TOOL SET 11	100.000	mm	OK
12	TOOL SET 12	100.000	mm	OK
13	TOOL SET 13	100.000	mm	OK
14	TOOL SET 14	100.000	mm	OK
15	TOOL SET 15	100.000	mm	OK
16	TOOL SET 16	100.000	mm	OK
17	TOOL SET 17	100.000	mm	OK
18	TOOL SET 18	100.000	mm	OK
19	TOOL SET 19	100.000	mm	OK
20	TOOL SET 20	100.000	mm	OK

X -349.781 Y +220.467 Z +242.166
B +0.000 C +0.000 S +80.000

Control panel with various buttons and knobs. Includes a numeric keypad (0-9), function keys (F1-F12), and a directional pad. Two rotary knobs are visible on the left side.

Lower control panel featuring a red emergency stop button, a yellow stop button, a green start button, and a red stop button. It also includes a numeric keypad and several other function buttons. Two keys are hanging from the top of this panel.

Handwritten notes on a piece of paper at the bottom of the machine.









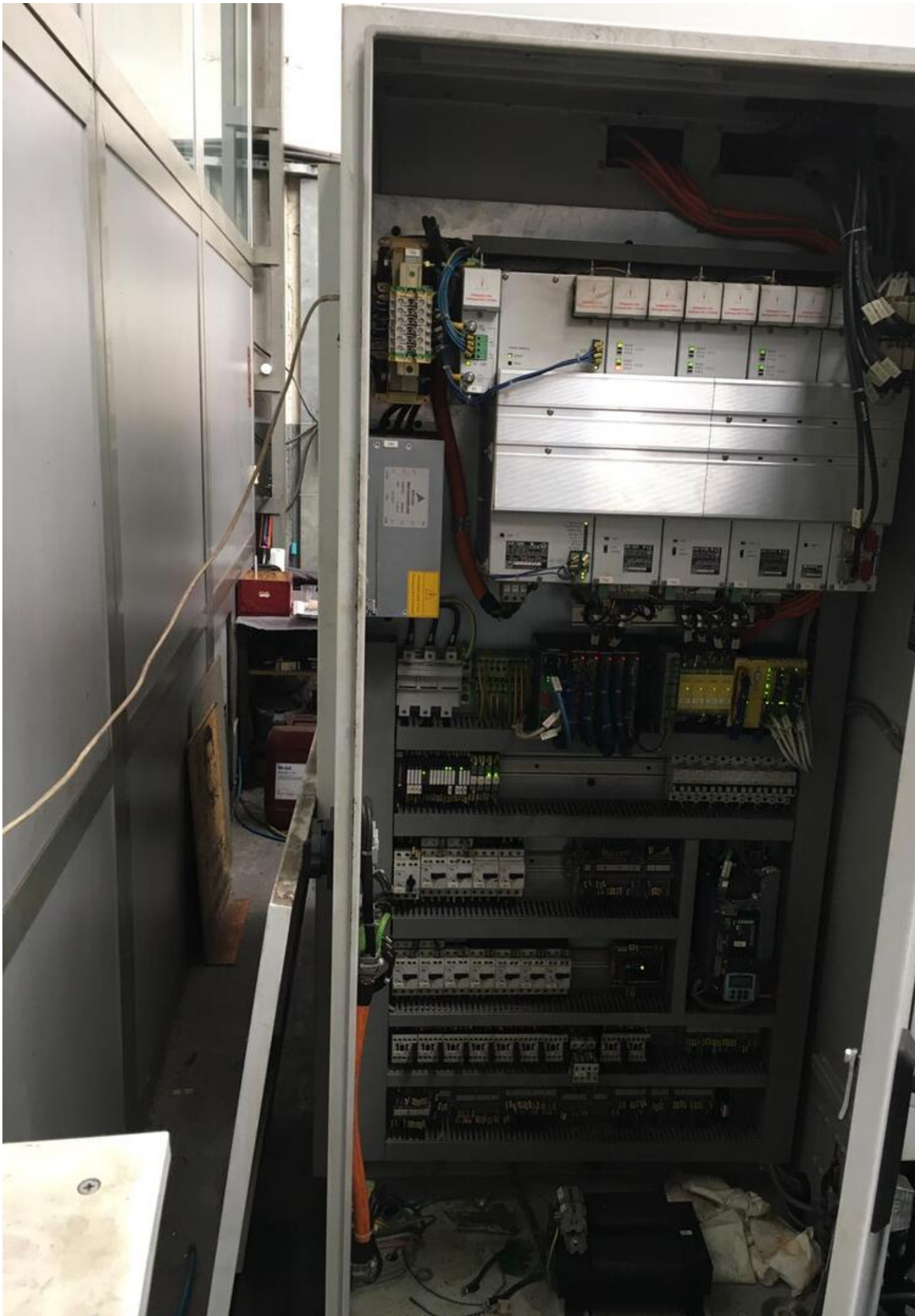


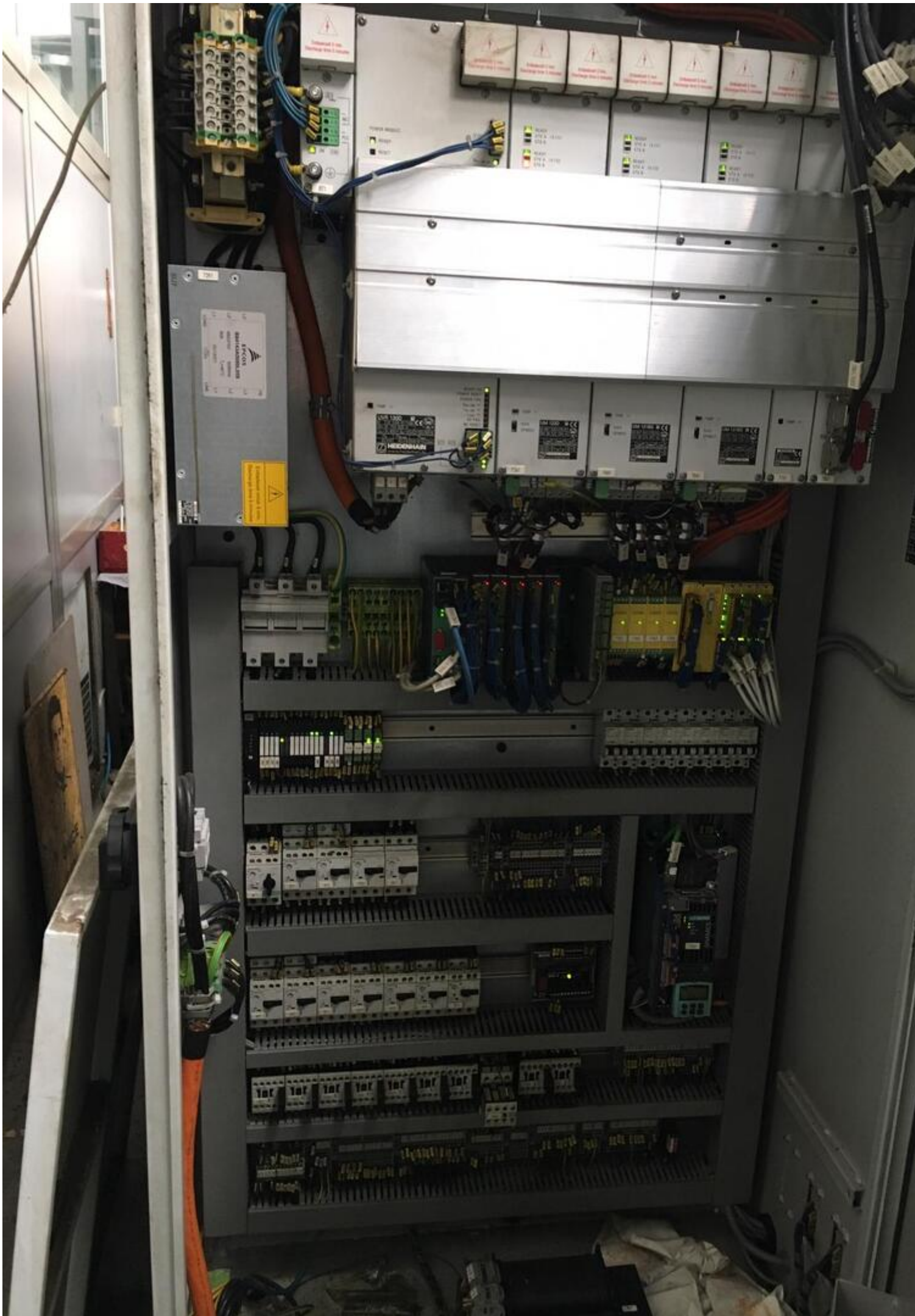


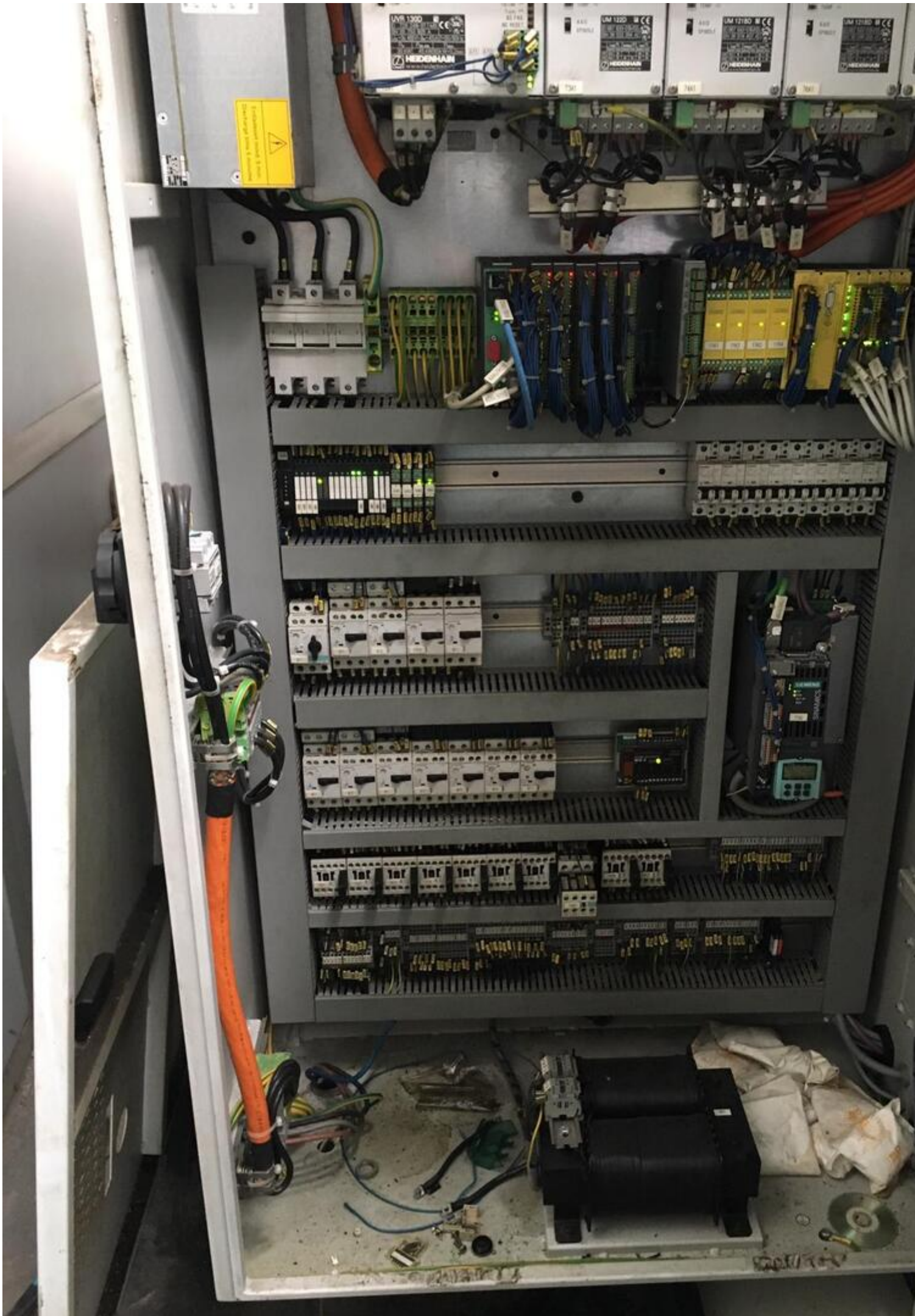
BAYSALLAR SERVO VOLTAJ REGÜLATÖRLERİ

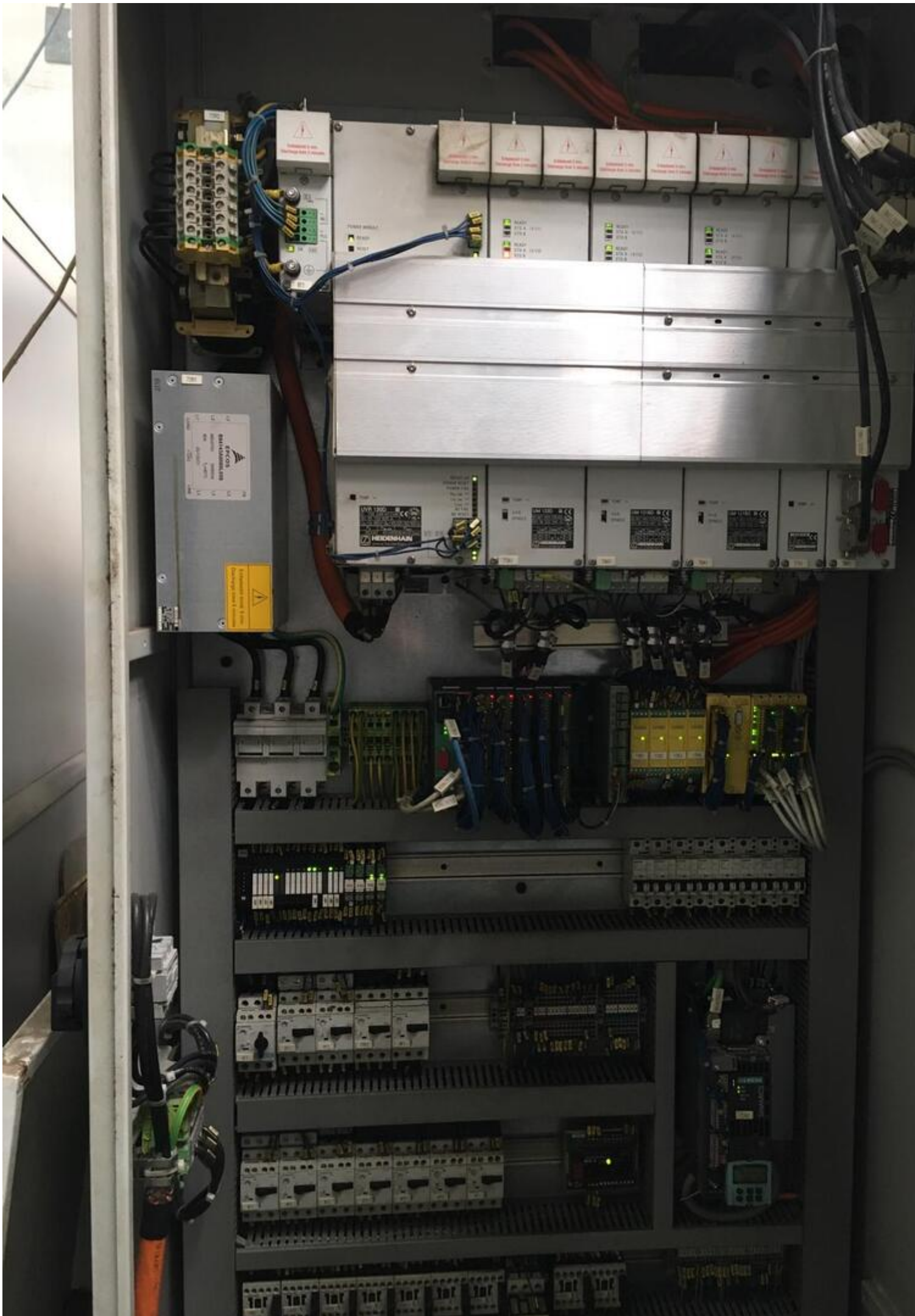












SPINNER TAKIM TEZGAHLARI
SANAYİ ve TİCARET LTD.ŞTİ.

Hasan Yalman cd. Desbas depo binası
No:2 Tuzla İSTANBUL - TÜRKİYE

Nr : UT 0227

Type : 620

U : 3 x 400 V ~

I : 42 A 50

Hz : 50 / 60 Hz 2012

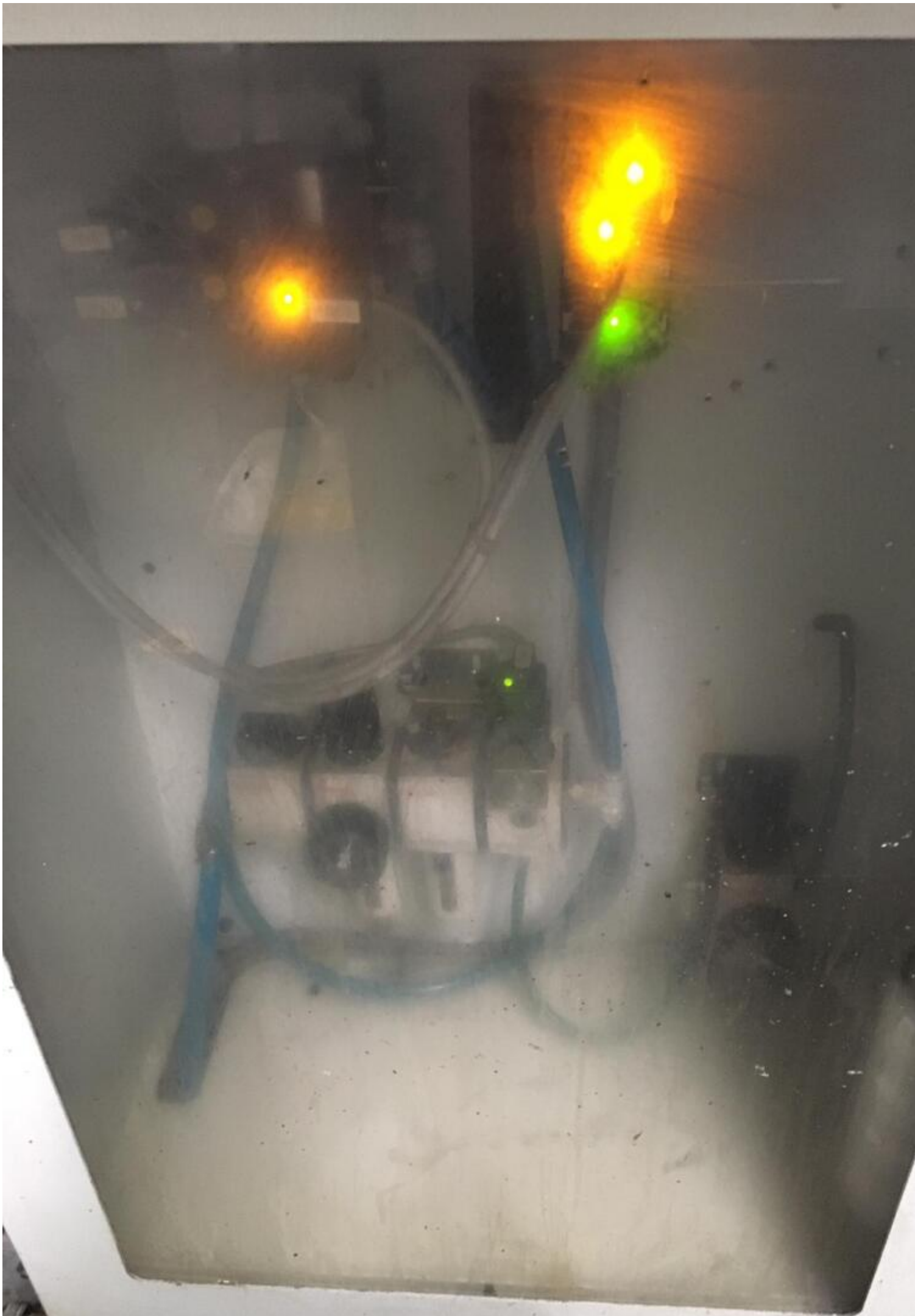


ATTENZIONE: Pericolo di soffocamento. Evitare di mettere le mani o gli oggetti nei griglia di aspirazione.
AVVERTENZE DI SICUREZZA
AVVERTENZE DI SICUREZZA
AVVERTENZE DI SICUREZZA

HYTAL







20



21

Video:



Asset-Trade

Assessment and Sale of Used Assets world wide

Am Sonnenhof 16

47800 Krefeld

Germany

Tel.: +49 2151 32500 33

Fax.: +49 2151 65 29 22

Email: info@asset-trade.de

Web.: <https://www.asset-trade.de/en>

Ref. No.:
1020-05131318

Overview and Technical Data:

SPINNER - U5-620 5 axis

SPINNER

SPIN

Year of Build:
Jan 2012

Description:

Used SPINNER U5-620 5-Axis Simultaneously

CNC Control Heidenhain TNC620

5-axis model with large turn-tilt table integrated in the machine bed

Technical data:

- Work area / travel paths
 - X axis 620 mm
 - Y axis 520 mm
 - Z axis - 460 mm
 - C axis 360 °
 - B axis + 5 ° (+ 50 °) / -110 °
 - Min. Distance spindle nose - table 150 mm

- Max. Distance spindle nose - table 610 mm
- Feed / rapid traverse 48 m / min
- Spindle
 - Turning speed 12,000 rpm
 - Power Pmax 22 kW
 - Torque Mmax 135 Nm
 - 26 bar inside cooling
- Tools
 - Number of tool stations 32 Max. High-speed automatic tool changer as double-arm changer
 - Tool diameter 76 mm
 - at free neighboring places 127 mm
 - Max. Tool length 290 mm
 - Max. Tool mass 7 kg
 - Tool Holder SK40
- Table
 - Table dimensions Ø 720 x 540 mm
 - Max. Table load 300 kg
 - T-slots 18
- Dimensions (L x D x H) 3,133 x 2,415 x 2,920 mm

Technical Data:

Technical Data:

Control:

[TNC 620](#)

Machine Hours:

23.136 hrs.

Spindle Speed:

12.000 rpm

Tool Capacity:

32 x

Travels:

X-Axis:

620 mm

Y-Axis:

520mm

Z-Axis:

460 mm

Dimensions and Weight:

Height:

2.920 mm

Width:

2.415 mm

Length:

3.133 mm

Weight:

7.100 kg

Buyer Information:

Condition:

[Very good condition](#)

Availability:

[On Request](#)

Sold as:

[EXW \(Ex Works - Incoterm\)](#)

VAT:

[19 %](#)

Buyers Premium:

[16 %](#)

Location:

Turkey

Images:



SPINNER

U-620





HEIDENHAIN

Program run, full sequence
02_T18_MT95_L35.n

NO	FUNCTION	VALUE	UNIT	STATUS
1	TOOL SET 1	100.000	mm	OK
2	TOOL SET 2	100.000	mm	OK
3	TOOL SET 3	100.000	mm	OK
4	TOOL SET 4	100.000	mm	OK
5	TOOL SET 5	100.000	mm	OK
6	TOOL SET 6	100.000	mm	OK
7	TOOL SET 7	100.000	mm	OK
8	TOOL SET 8	100.000	mm	OK
9	TOOL SET 9	100.000	mm	OK
10	TOOL SET 10	100.000	mm	OK
11	TOOL SET 11	100.000	mm	OK
12	TOOL SET 12	100.000	mm	OK
13	TOOL SET 13	100.000	mm	OK
14	TOOL SET 14	100.000	mm	OK
15	TOOL SET 15	100.000	mm	OK
16	TOOL SET 16	100.000	mm	OK
17	TOOL SET 17	100.000	mm	OK
18	TOOL SET 18	100.000	mm	OK
19	TOOL SET 19	100.000	mm	OK
20	TOOL SET 20	100.000	mm	OK

X -349.781 Y +220.467 Z +242.166
B +0.000 C +0.000 S +80.000

Control panel with various buttons and knobs. Includes a numeric keypad (0-9), function keys (X, Y, Z, CE, P, I), and directional keys. Two rotary knobs are visible on the left side.

Lower control panel featuring a red emergency stop button, a yellow button, several black buttons, a grid of grey buttons, and a green button. Two keys are inserted into the top of the panel.

Handwritten notes on a piece of paper at the bottom of the machine.











SPINNER U-620



Technical manual or data sheet with tables and text, partially obscured by a metal handle.

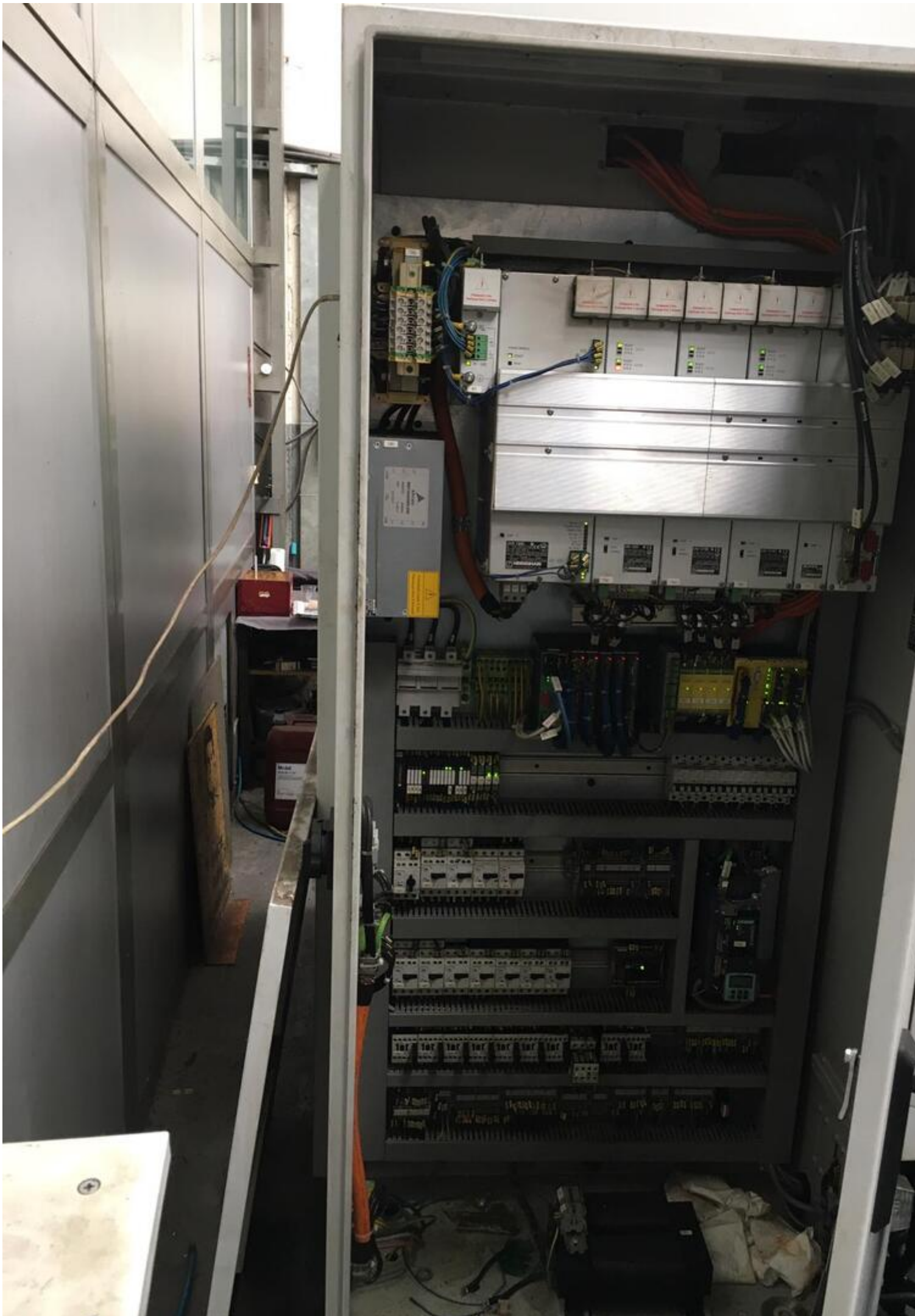


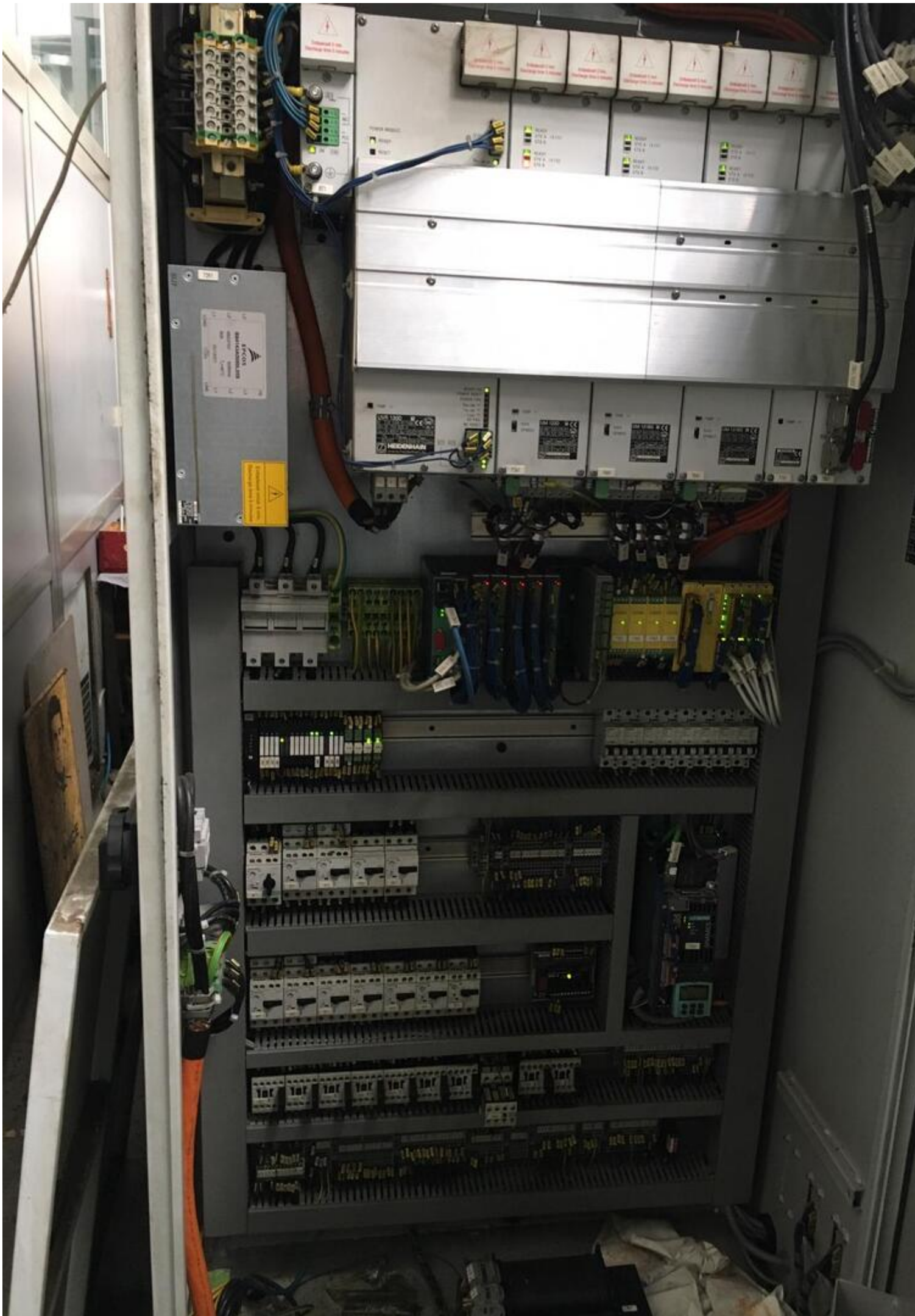


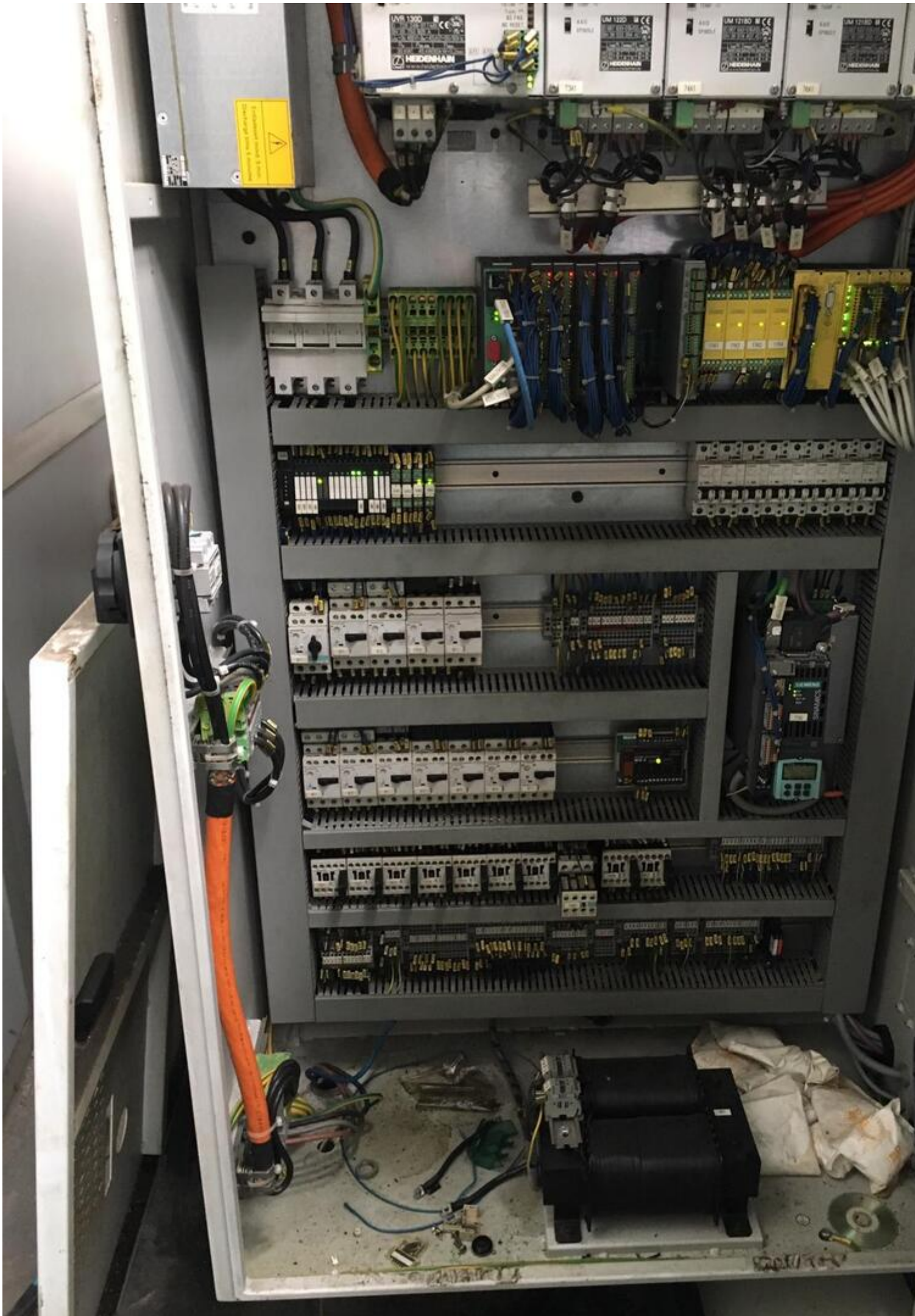
BAYSALLAR SERVO VOLTAJ REGÜLATÖRLERİ

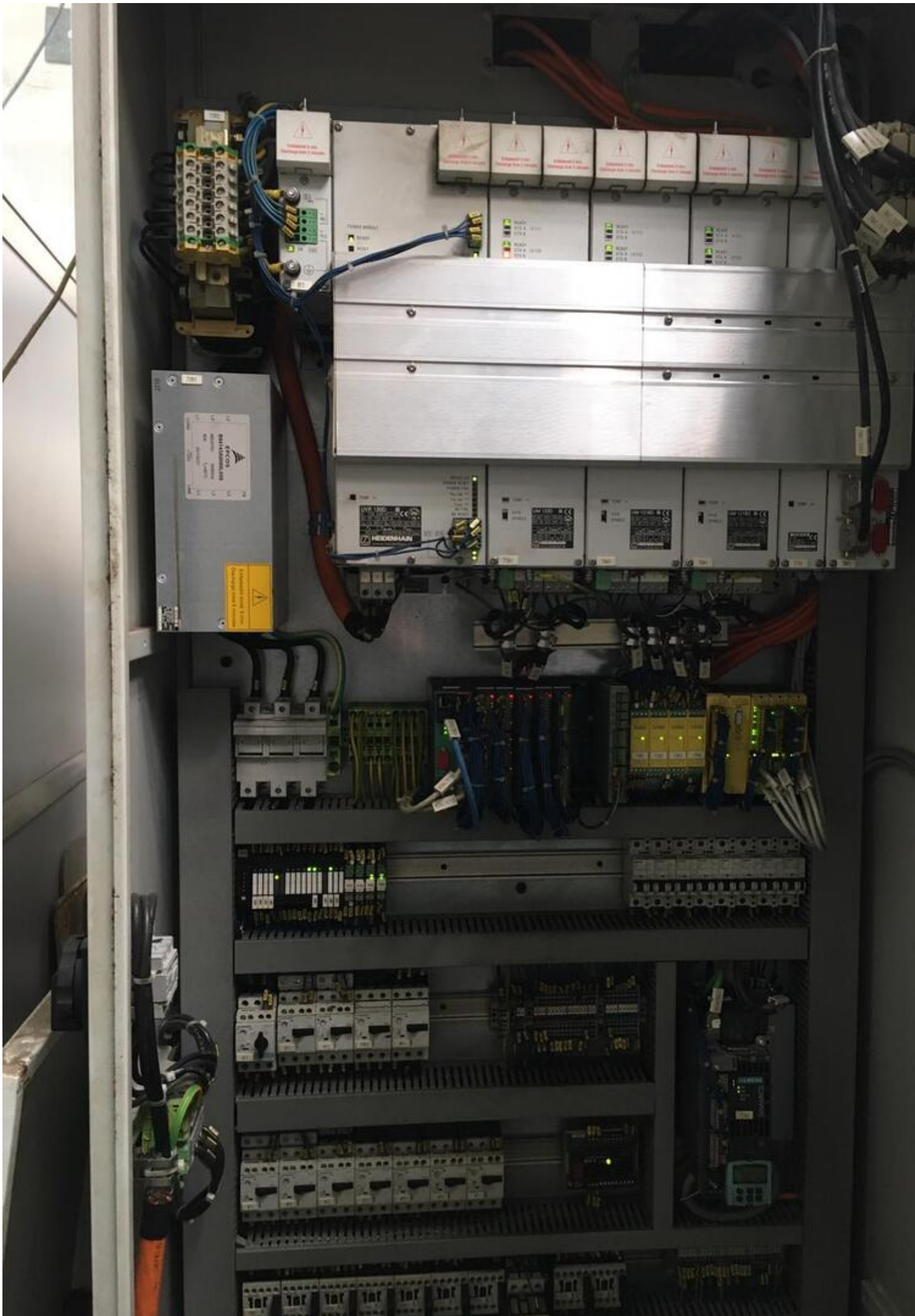












SPINNER TAKIM TEZGAHLARI
SANAYİ ve TİCARET LTD.ŞTİ.

Hasan Yalman cd. Desbas depo binası
No:2 Tuzla İSTANBUL - TÜRKİYE

Nr : UT 0227

Type : 620

U : 3 x 400 V ~

I : 42 A 50

Hz : 50 / 60 Hz 2012

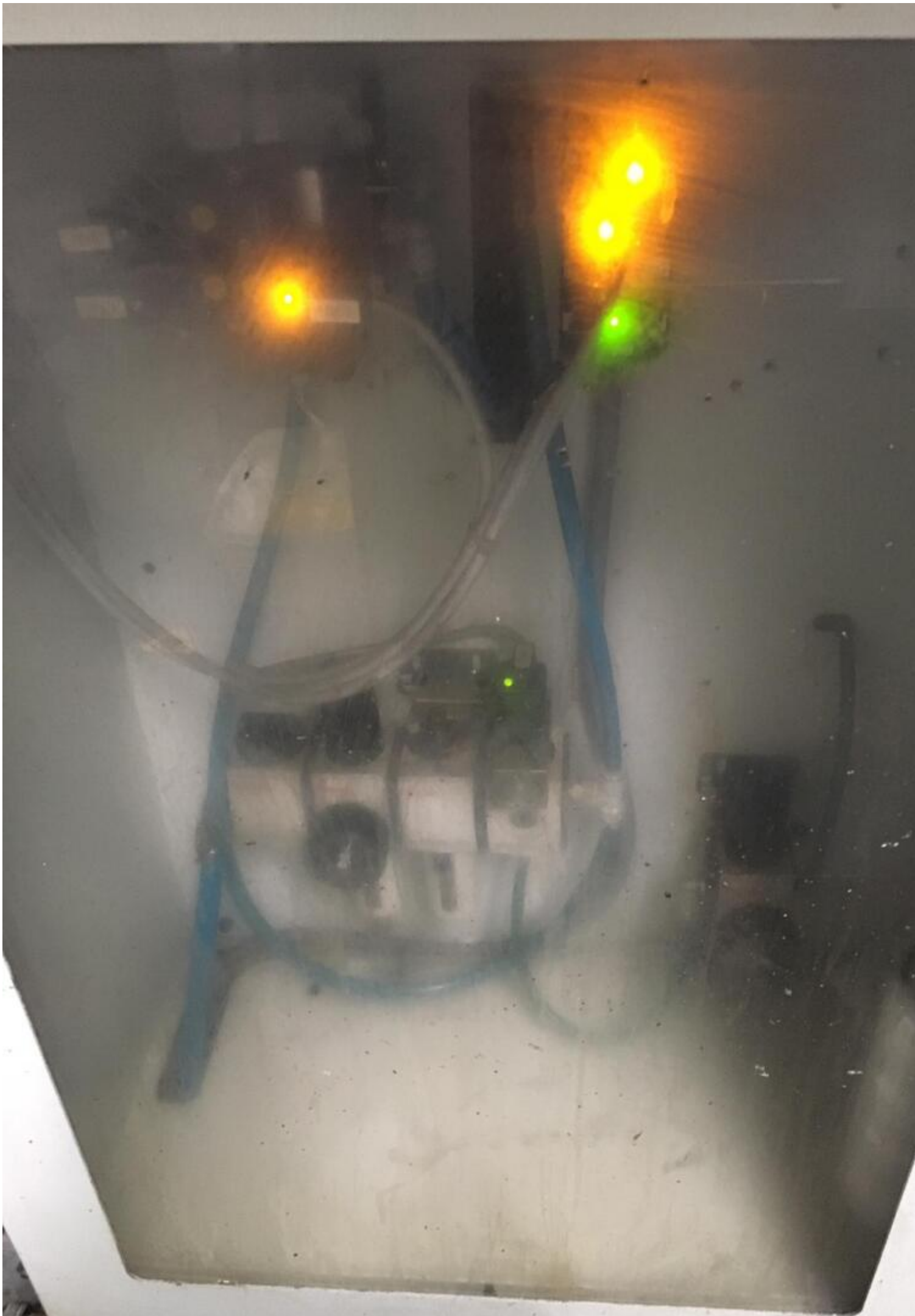


Warning: Read the manual before use.
Caution: Do not touch the fan blades.
Do not use water to clean the unit.
Do not use the unit in a humid environment.
Do not use the unit in a dusty environment.
Do not use the unit in a noisy environment.

RYTAL







20



21

Video:



Asset-Trade

Assessment and Sale of Used Assets world wide

Am Sonnenhof 16

47800 Krefeld

Germany

Tel.: +49 2151 32500 33

Fax.: +49 2151 65 29 22

Email: info@asset-trade.de

Web.: <https://www.asset-trade.de/en>

Generated on 12.04.2026

© Copyright 2026 - [Asset-Trade](#)

Page