



Asset-Trade

Assessment & Sale of Used Assets

Ref. No.: 1105-01301150

Overview and Technical Data:

HELLER - MC 200 5-Axis

HELLER



HELLER
MC 200

Year of Build: Jan 2007



Description:

Used Heller MC 200 machining center 5 axes

Control CNC Siemens 840D

Technical specifications

- Travel:
 - X-axis 800.0 mm
 - Y axis 800.0 mm
 - Z axis 1000.0 mm
- Table size 630.0 mm x 500.0 mm
- Workpiece weight 1500.0 kg
- Tool changer 55x
- Spindle cone HSK100
- Max. Spindle speeds 10,000 rpm
- Spindle motor power 37 kW / 490Nm
- Number of pallets 2.0
- IKZ 50 bar
- Dimensions length x width x height 7.0x 3.2x 4.0m

The distinct advantages offered by the machine are:

Robust bed construction giving a high degree of machine rigidity · Well dimensioned motor spindles providing excellent power at the spindle and best milling characteristics · Maintenance-free AC motors for main spindle and feed drives · High fine boring quality due to direct spindle drives · High thermal stability of the unit is achieved by grease-lubricated spindle bearings and a water-cooled motor spindle drive · Shortest positioning times through high rapid traverse rates and fast acceleration values · Low-friction roller bearing guideways, robust ball screw drives together with direct path measurement with absolute linear scales give higher positioning and circular interpolation accuracy · Optimum acceleration of linear axes through good relation of masses and drive design · A wide speed range and internal coolant supply through the spindle give optimum tool utilisation · Controlled tool changers equipped with servo motors provide shortest chip-to-chip times · Short tool access times through clockwise/anticlockwise rotation and high speed of the magazine and direct access of the tool changer to the



Asset-Trade

Assessment & Sale of Used Assets

magazine places · Machine is ready for integration into highly automated HELLER manufacturing system · Efficient chip disposal and compact work area · Enclosed work area provides a clean machine environment. · User-friendly operation of the control promoting efficient workshop practices



Technical Data:

Technical Data:

Control: SINUMERIK 840D
Spindle Speed: 10.000 rpm
Tool Capacity: 55 x

Travels:

X-Axis: 800 mm
Y-Axis: 800mm
Z-Axis: 1.000 mm

Dimensions and Weight:

Height: 4.000 mm
Width: 3.200 mm
Length: 7.000 mm
Weight: 21.000 kg

Buyer Information:

Condition: Very good condition
Availability: Sold
Sold as:
EXW (Ex Works - Incoterm)
VAT: 19 %
Location: Germany



Asset-Trade

Assessment & Sale of Used Assets

Images:

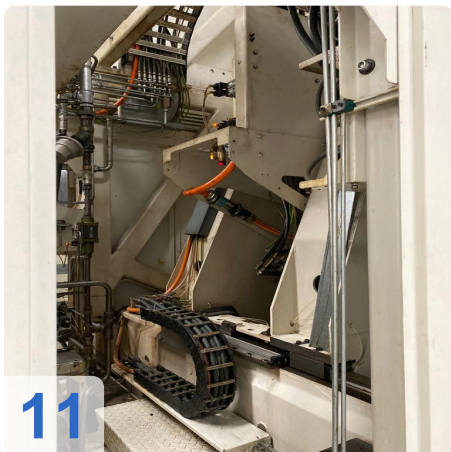




Assets

e

Assets

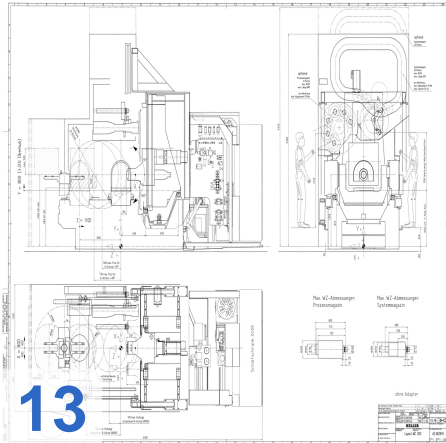




As

e

ssets





Asset-Trade

Assessment & Sale of Used Assets

Video:





Asset-Trade

Assessment & Sale of Used Assets



Asset-Trade

**Assessment and Sale of Used Assets world
wide**

Am Sonnenhof 16

47800 Krefeld

Germany

Tel.: +49 2151 32500 33