

Image not found or type unknown



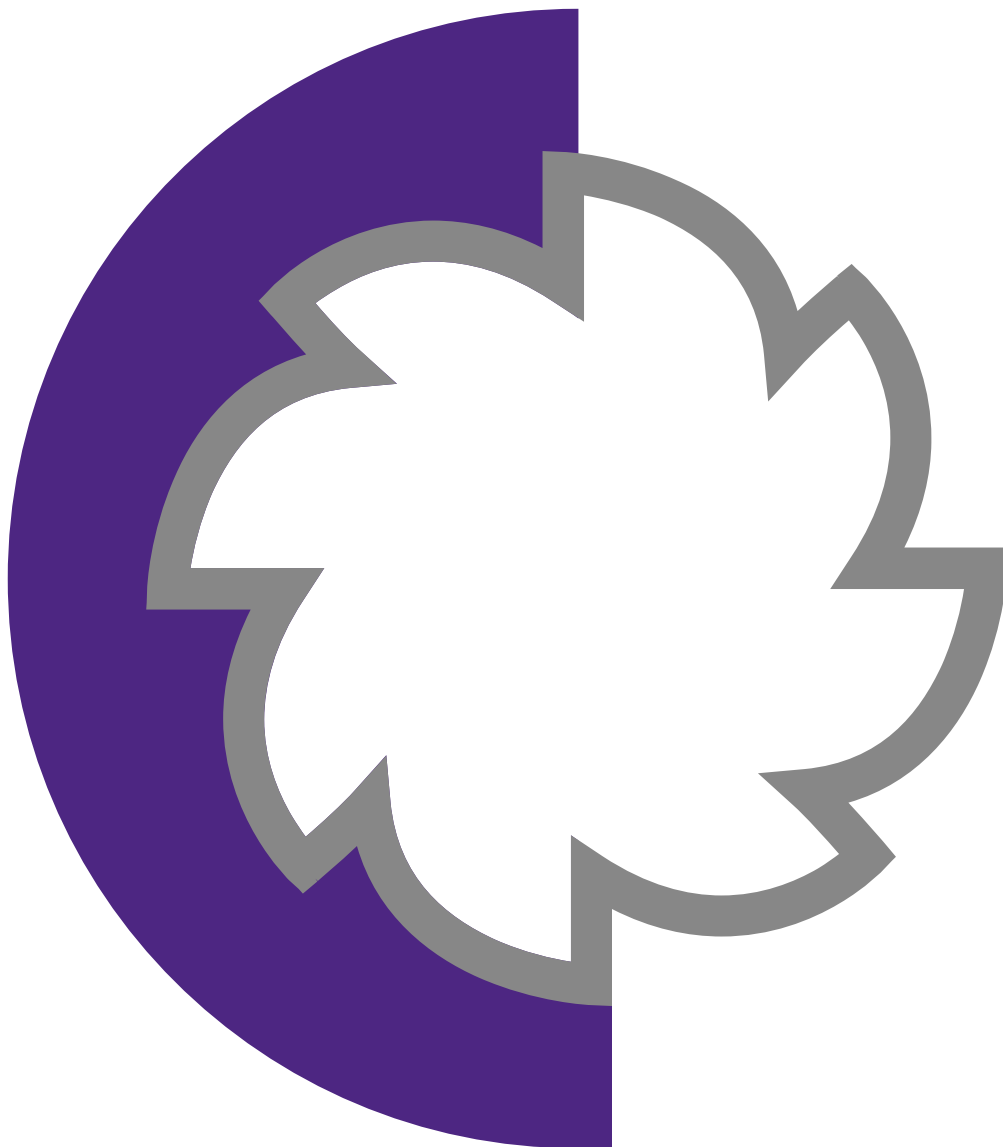
Ref. No.:

1142-10141922

Overview and Technical Data:

CME - FS-1 CNC Bedtype Milling Machine

[CME](#)



Year of Build:

Jan 2001

Description:



Used CME FS-1 CNC Bedtype Milling Machine

CNC Heidenhain TNC 410 Control

Technical Data

- Travels
 - X-Axis : 1400 mm
 - Y-Axis : 1000 mm
 - Z-Axis : 1000 mm
- Table Size: 1600x1000 mm
- Max. Weight On Table: 4.500 kg
- Motor Power: 27 kW
- Spindle Taper: ISO-50 / DIN 69871
- Spindle Speed Range: 50~3000 rpm
- Rapid Traverse Speed in 3 Axes: 20 m/min
- Positioning Accuracy in 3 Axes: ± 0.005 mm
- Repeatability Accuracy in 3 Axes: ± 0.005 mm
- Weight: 13.000 kg
- Digital Motors
- Drives Linear Guideways
- Linear Guide Motionblocks ix X/Z/Y axe
- Universal Milling Head
- Thermal Compensation
- CE Norms
- Complete Coolant System Automatic Centralised Lubrication Hydraulic Compensation
- HR-140 Haidenhain Portable Hand Wheel Horizontal / Vertical Positioning
- Semi Automatic Milling Head
- 15 bar Cooling Through Spindle

This machine is in Auction which ends on 31 Oct 2021 from 12:00 AM CEST

<https://auctions.maynards.com/auction-020/itemDetails/4392/547385>

The FS Series range is the result of years of work and improvement, developing a product of great structural rigidity. It is a heavy, oversized machine to ensure the best possible response in limit working conditions. The different FS Series models offer a great range of working capabilities thanks to their different itineraries, which enable the machining of big parts that used to require a much bigger machine. The standard equipment of the FS Series includes an automatic milling head that enables a great number of machining angles thanks to its 1° back turn and 2,5° front turn. This allows for the machining of more than 5 sides without having to move the part, which saves time and space and makes the work more dynamic. Its power and R.P.M. enables work in first rough milling operations and in part finish operations.

Technical Data:

Technical Data:

Control:

[TNC 410](#)

Spindle Speed:

3.000 rpm

Tool Holder:

[SK50](#)

Travels:

X-Axis:

1.400 mm

Y-Axis:

1.000mm

Z-Axis:

1.000 mm

Dimensions and Weight:

Weight:

13.000 kg

Buyer Information:

Condition:

[Very good condition](#)

Availability:

[Sold](#)

Sold as:

[EXW \(Ex Works - Incoterm\)](#)

VAT:

[19 %](#)

Buyers Premium:

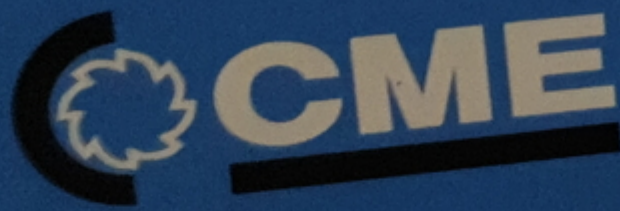
[16 %](#)

Location:

Germany

Images:

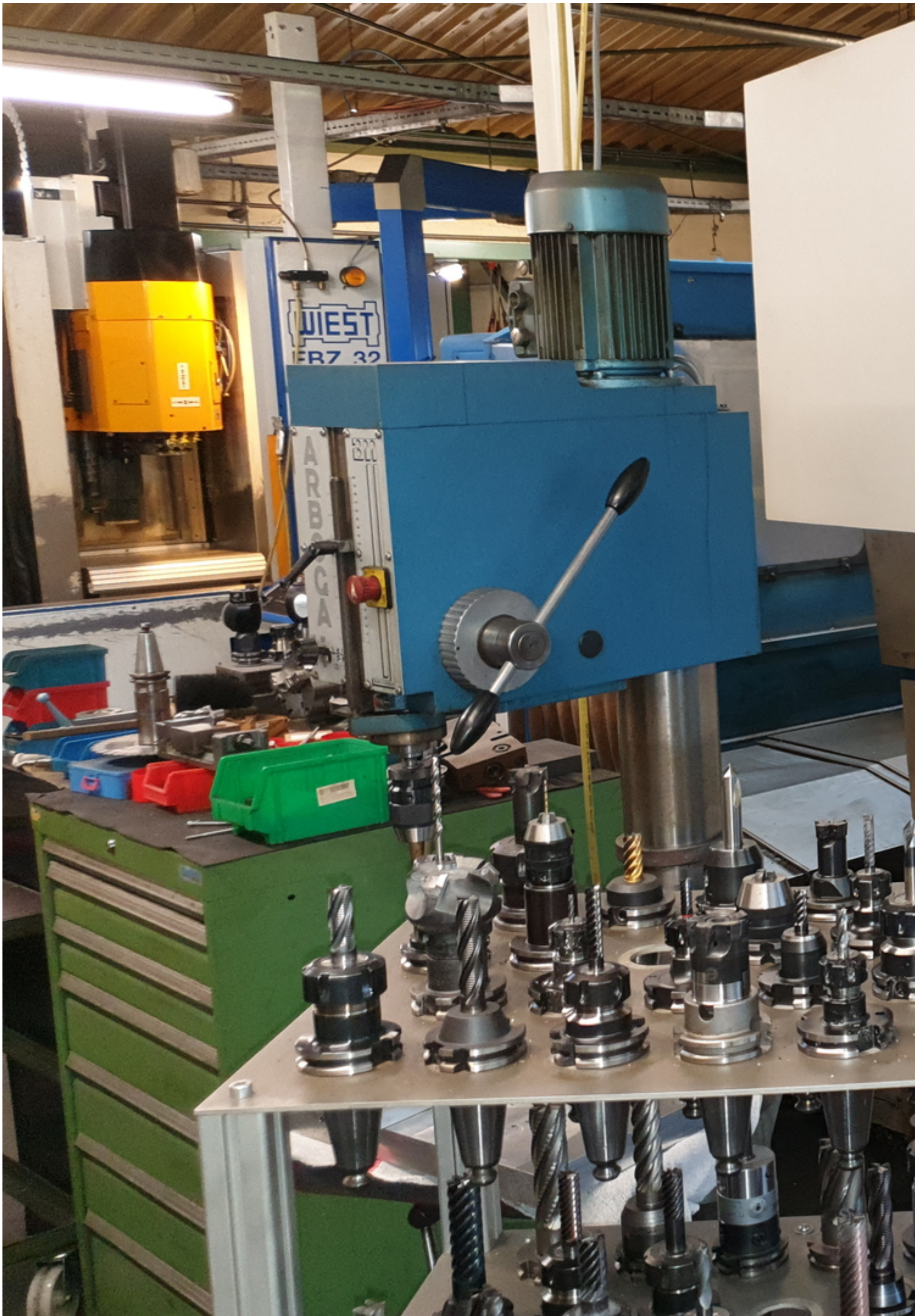












Maynards
Maynards Europe GmbH
Mannheim 48
68173 Mannheim
www.maynards.com

002

HEIDENHAIN

Manueller Betrieb

IST X +54,560
Y +456,520
Z -221,415

REST X +639,370
Y +141,350
Z +606,860

POWER HEAD 3...0
T IN HEAD.....165

T 0
F 606 / 0 M5/9
S

M	S	WIRTSCHAFTS- FUNKTION	SCHRITT- WEGE- EIN	BEZUGS- PUNKT BEZUG	WERKZEUG TABELLE
---	---	--------------------------	--------------------------	---------------------------	---------------------

Control panel featuring a keyboard, numeric keypad, function keys, and a hand-held controller with a trackball and directional buttons. Includes a red emergency stop button and a yellow stop button.

! # \$ % ^ & * () -
" Q W E R T Y U I O
SHIFT A S D F G H J K L
SPACE Z X C V B N M , .

100
50 150
S %

PGM MGT ERR
CALC MOD HELP

APPR DEP
CR RNC

150
F %

TOUCH PROBE
STOP

|



IV+ Z+ Y+ V+
X- ~ X+ T
Y- Z- IV- V-

HEIDENHAIN

Manueller Betrieb

IST	X	+54
	Y	+456
	Z	-221

RESTW	X	+639,370
	Y	+141,350
	Z	+606,860

T
F
S

M

S

ANTAST-
FUNKTION

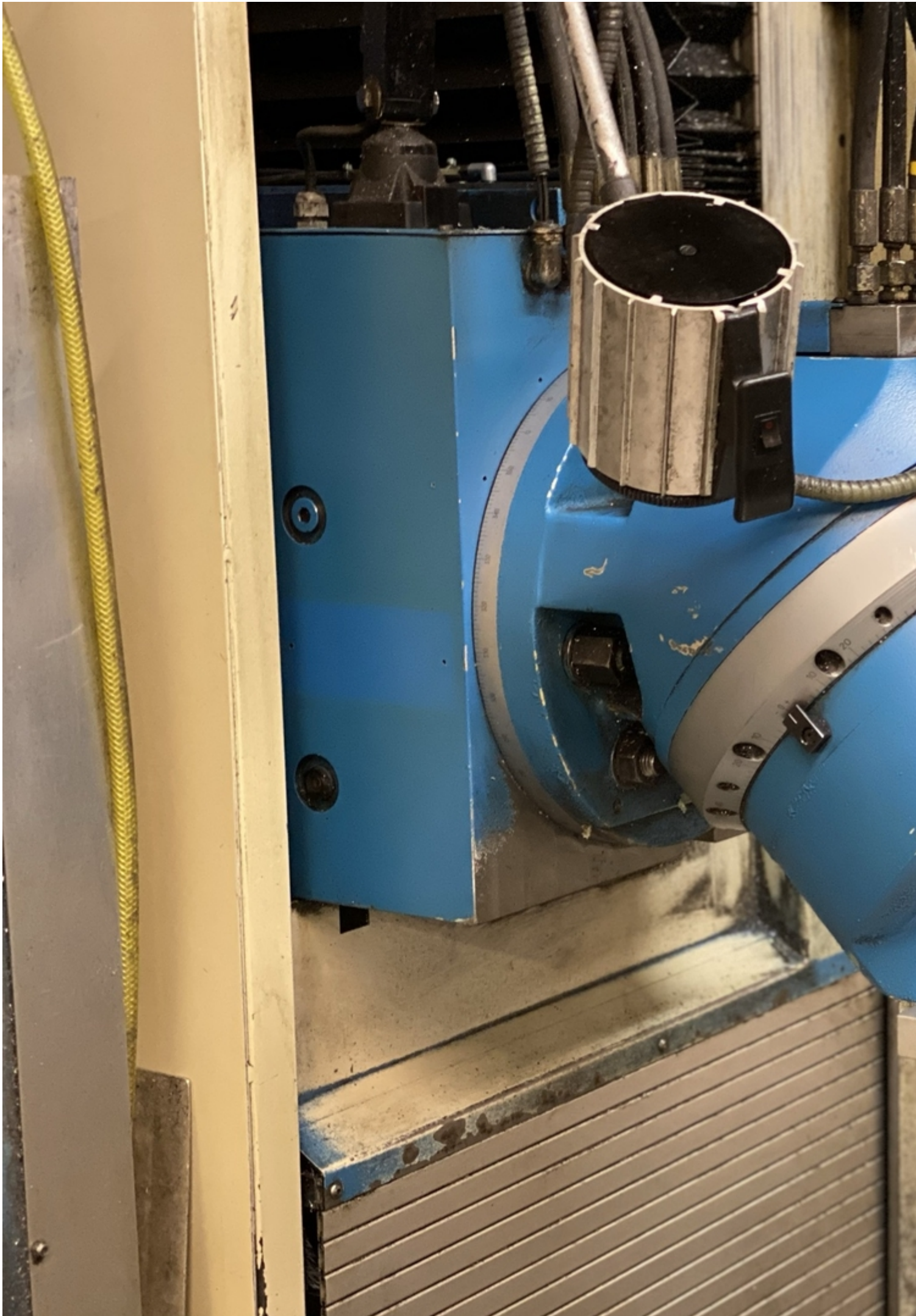
SCH
MA
AUS







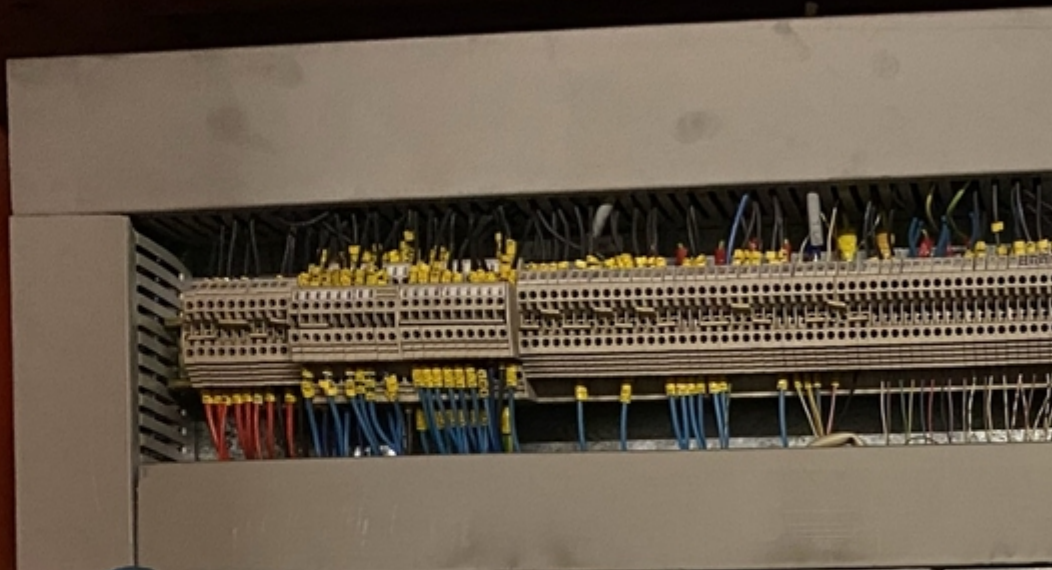
← + X - →











HERST

MAQU

WOHN

MOD

MAS

HERS

HERSTELLERS

MAQUINARIA

WOHNORT: I

MODELL: FS

MASCH NUM

HERSTELLU

Video:



Asset-Trade

Assessment and Sale of Used Assets world wide

Am Sonnenhof 16

47800 Krefeld

Germany

Tel.: +49 2151 32500 33

Fax.: +49 2151 65 29 22

Email: info@asset-trade.de

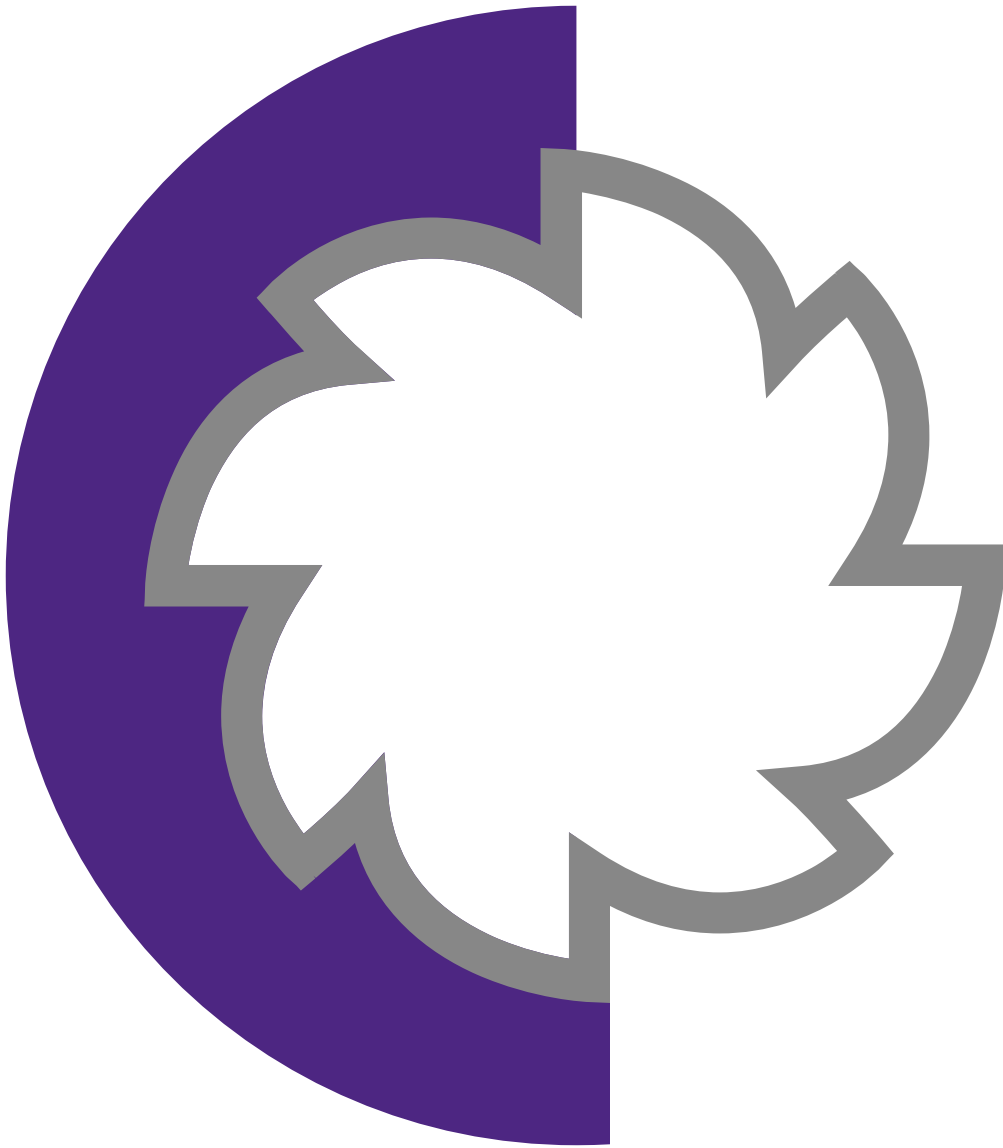
Web.: <https://www.asset-trade.de/en>

Ref. No.:
1142-10141922

Overview and Technical Data:

CME - FS-1 CNC Bedtype Milling Machine

CME



Year of Build:
Jan 2001

Description:

Used CME FS-1 CNC Bedtype Milling Machine

CNC Heidenhain TNC 410 Control

Technical Data

- Travels
 - X-Axis : 1400 mm
 - Y-Axis : 1000 mm
 - Z-Axis : 1000 mm
- Table Size: 1600x1000 mm
- Max. Weight On Table: 4.500 kg
- Motor Power: 27 kW
- Spindle Taper: ISO-50 / DIN 69871

- Spindle Speed Range: 50~3000 rpm
- Rapid Traverse Speed in 3 Axes: 20 m/min
- Positioning Accuracy in 3 Axes: ± 0.005 mm
- Repeatability Accuracy in 3 Axes: ± 0.005 mm
- Weight: 13.000 kg
- Digital Motors
- Drives Linear Guideways
- Linear Guide Motionblocks ix X/Z/Y axe
- Universal Milling Head
- Thermal Compensation
- CE Norms
- Complete Coolant System Automatic Centralised Lubrication Hydraulic Compensation
- HR-140 Haidenhain Portable Hand Wheel Horizontal / Vertical Positioning
- Semi Automatic Milling Head
- 15 bar Cooling Through Spindle

This machine is in Auction which ends on 31 Oct 2021 from 12:00 AM CEST

<https://auctions.maynards.com/auction-020/itemDetails/4392/547385>

The FS Series range is the result of years of work and improvement, developing a product of great structural rigidity. It is a heavy, oversized machine to ensure the best possible response in limit working conditions. The different FS Series models offer a great range of working capabilities thanks to their different itineraries, which enable the machining of big parts that used to require a much bigger machine. The standard equipment of the FS Series includes an automatic milling head that enables a great number of machining angles thanks to its 1° back turn and 2,5° front turn. This allows for the machining of more than 5 sides without having to move the part, which saves time and space and makes the work more dynamic. Its power and R.P.M. enables work in first rough milling operations and in part finish operations.

Technical Data:

Technical Data:

Control:

[TNC 410](#)

Spindle Speed:

3.000 rpm

Tool Holder:

[SK50](#)

Travels:

X-Axis:

1.400 mm

Y-Axis:

1.000mm

Z-Axis:

1.000 mm

Dimensions and Weight:

Weight:
13.000 kg

Buyer Information:

Condition:
[Very good condition](#)

Availability:

[Sold](#)

Sold as:
[EXW \(Ex Works - Incoterm\)](#)

VAT:

[19 %](#)

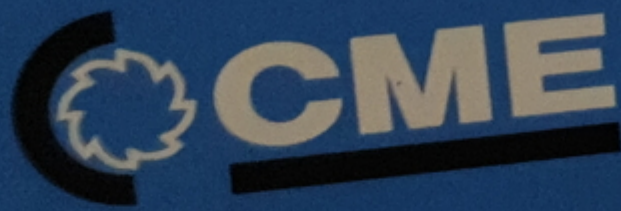
Buyers Premium:

[16 %](#)

Location:
Germany

Images:

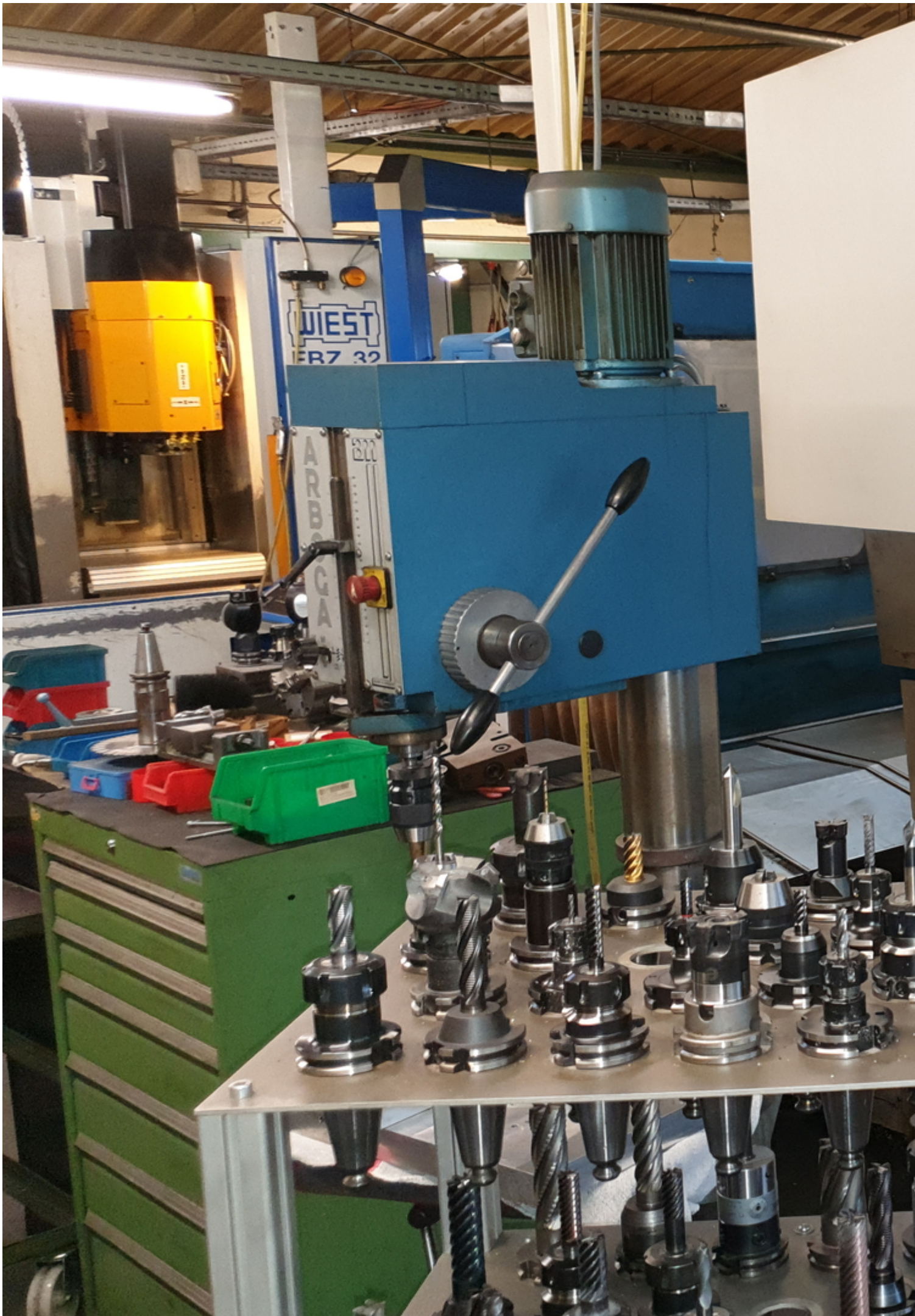












Maynards
Maynards Europe GmbH
Mannheim 48
68173 Mannheim
www.maynards.com

002

HEIDENHAIN

Manueller Betrieb

IST X +54,560
Y +456,520
Z -221,415

REST X +639,370
Y +141,350
Z +606,860

POWER HEAD 3...0
T IN HEAD.....165

T 0
F 606 / 0 M5/9
S

M	S	PRÜF- FUNKTION	SCHRITT- WEG EIN	BEZUGS- PUNKT BEZUG	WERKZEUG TABELLE
---	---	-------------------	------------------------	---------------------------	---------------------



! # \$ % ^ & * () -
" Q W E R T Y U I O
SHIFT A S D F G H J K L
SPACE Z X C V B N M , .

100
50 150
S %

PGM MGT ERR
CALC MOD HELP

APPR DEP
CR RNC

150
F %

TOUCH PROBE
STOP

|



IV+ Z+ Y+ V+
X- ~ X+ |→
Y- Z- IV- V-

HEIDENHAIN

Manueller Betrieb

IST	X	+54
	Y	+456
	Z	-221

RESTW	X	+639,370
	Y	+141,350
	Z	+606,860

T
F
S

M

S

ANTAST-
FUNKTION

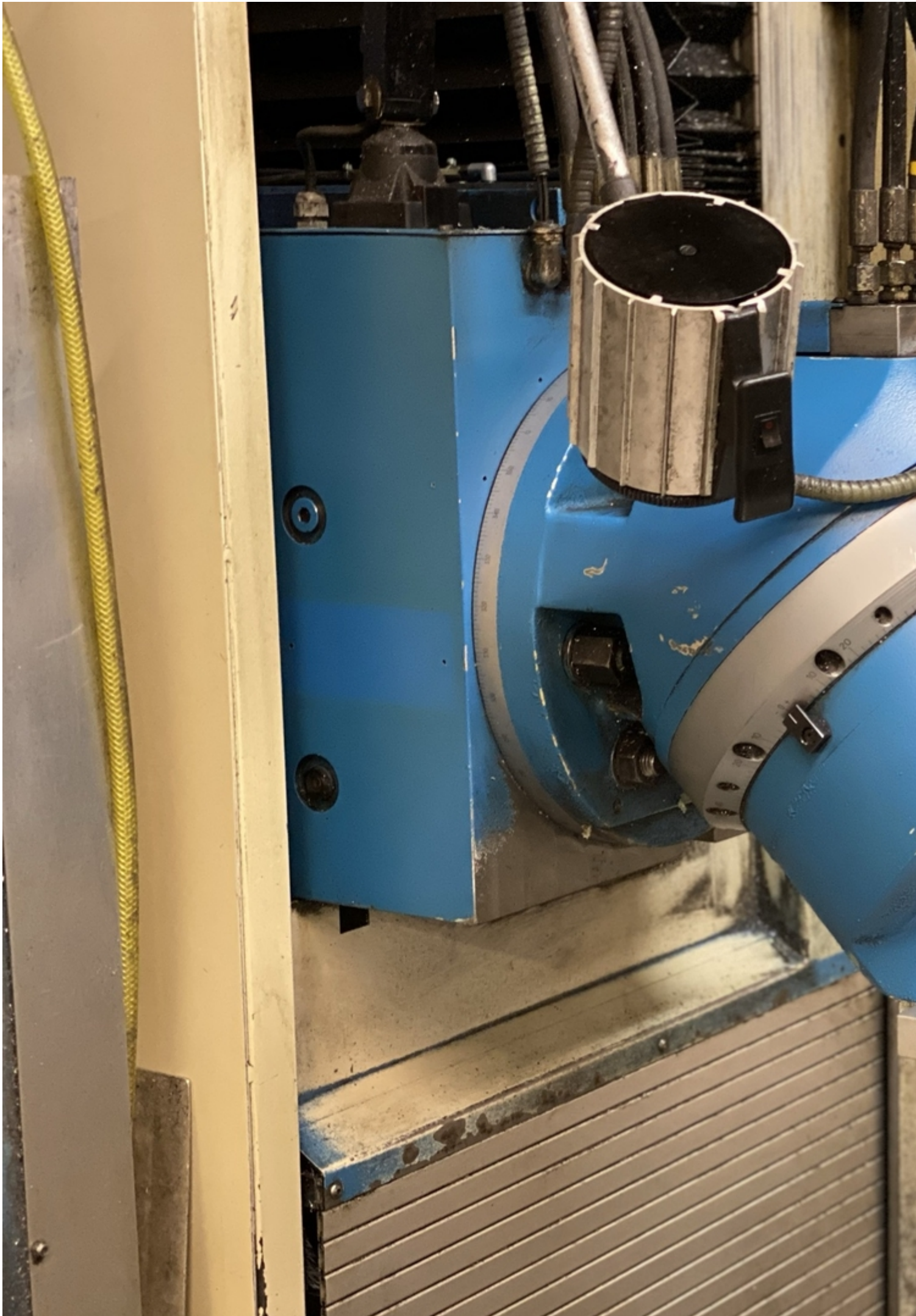
SCH
MA
AUS







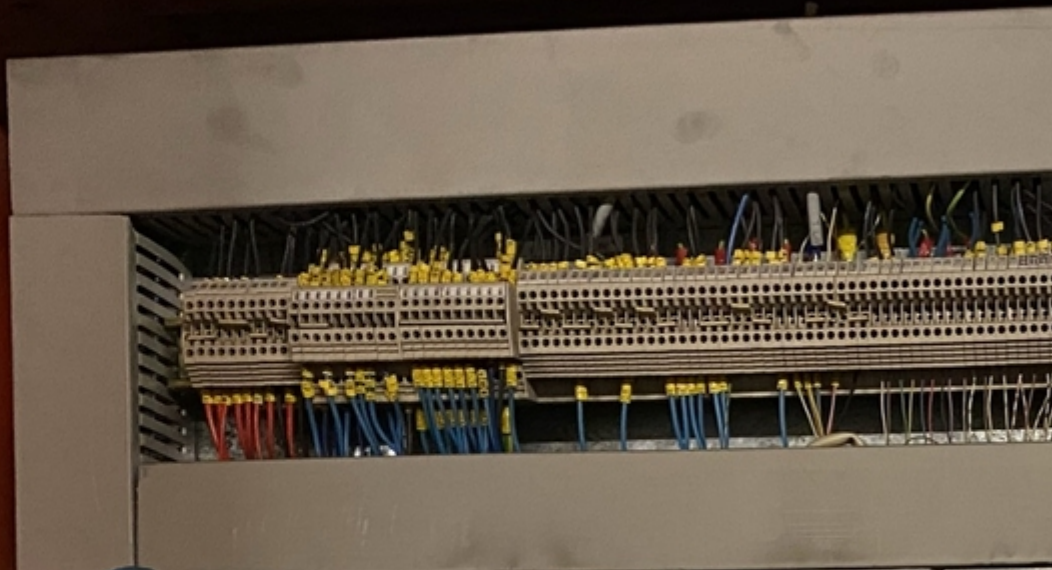
← + X - →











HERST

MAQU

WOHN

MOD

MAS

HERS

HERSTELLERS

MAQUINARIA

WOHNORT: I

MODELL:

18

MASCH NUM

HERSTELLU

Video:



Asset-Trade

Assessment and Sale of Used Assets world wide

Am Sonnenhof 16

47800 Krefeld

Germany

Tel.: +49 2151 32500 33

Fax.: +49 2151 65 29 22

Email: info@asset-trade.de

Web.: <https://www.asset-trade.de/en>

Generated on 04.04.2026

© Copyright 2026 - [Asset-Trade](#)

Page