

Image not found or type unknown



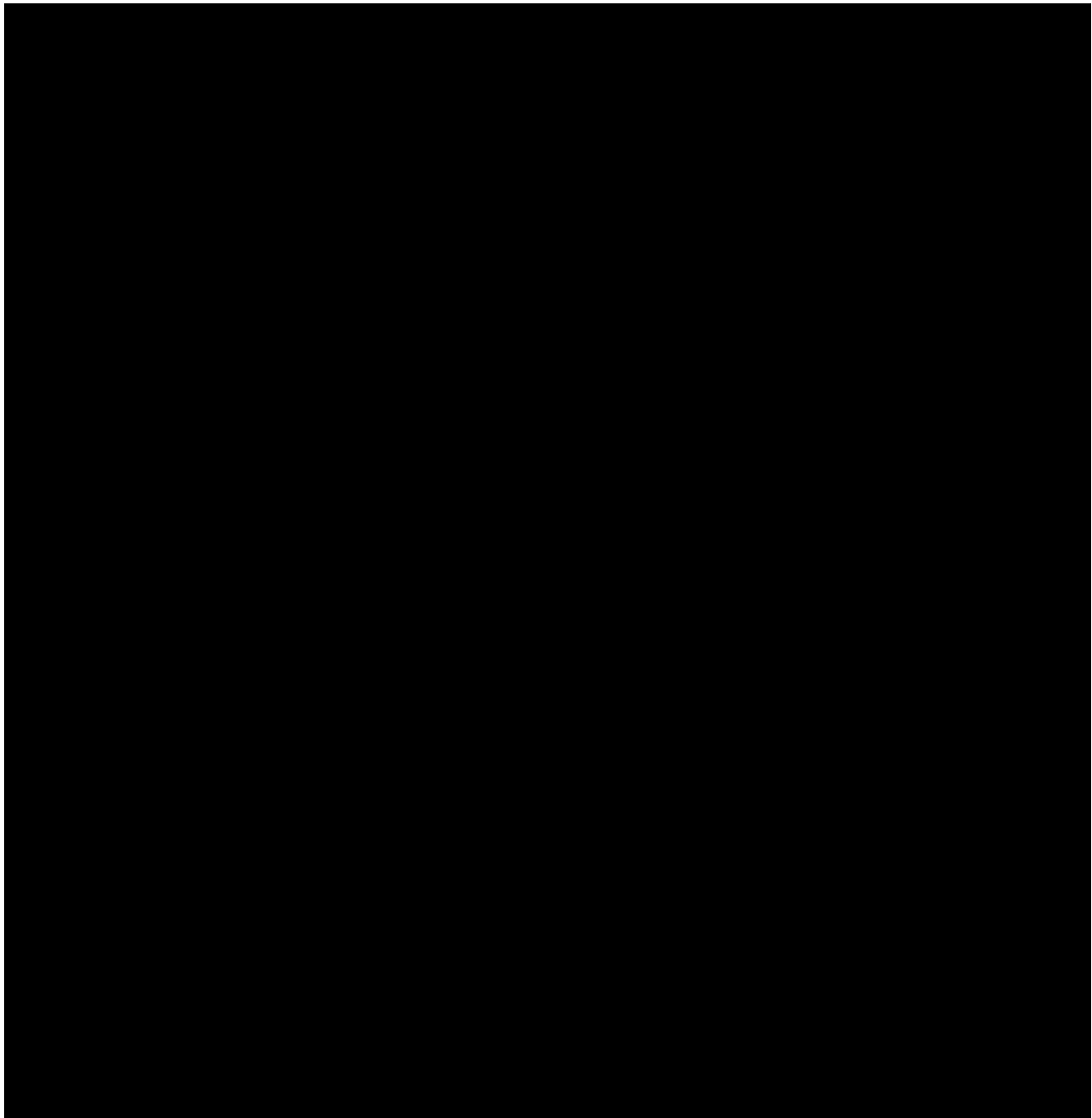
Ref. No.:

1140-01261642

Overview and Technical Data:

LODI - 1600x800x700 Grinding machine

LODI



Year of Build:

Jan 2002

Description:

Used LODI 1600x800x700 CNC grinding machine

CNC Control Lodi T2010

Technical Data:

Travels 1600 x 800 x 700 mm

Grinding disk Diameter: 400 mm

Automatic Balancing

Technical Data:

Technical Data:

Control:

[CNC](#)

Buyer Information:

Condition:

[Very good condition](#)

Available:

[Sold](#)

Sold as:

[EXW \(Ex Works - Incoterm\)](#)

VAT:

[19 %](#)

Buyers Premium:

[16 %](#)

Location:

Germany

Images:



Maysarts 006

T2010

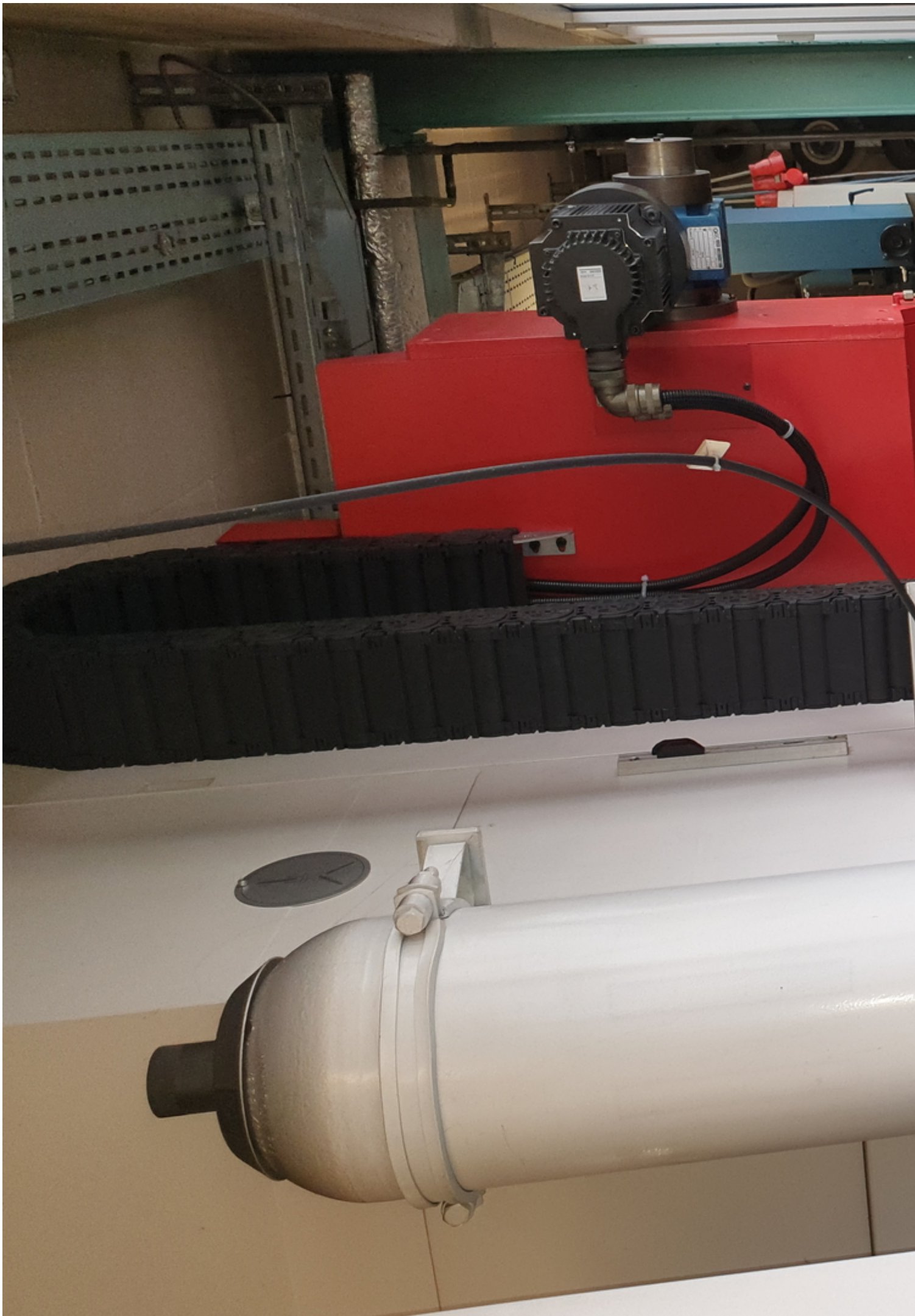


Keyboard and function buttons including HOME, HOLD, RESET, +, JOG, and -.

Control panel with a large rotary knob, several push buttons, and a red emergency stop button.











T2010

1 WERKZEUGMASCHINE AUS 10:15:30

HYDRAUL. JOG Z	Z	-0.002	Z	+0.000	Start Z	0.000
			DZ	+0.000	Ende Z	0.000
			LZ	+0.000	Schruppschicht	0.000
HYDRAUL. JOG Y	Y	-0.001	Y	+0.000	Schlichtschicht	0.000
			DY	+0.000	Aufpass schicht	0.000
			LY	+0.000	Z zyklusbeginn	0.000
HYDRAUL. JOG X	W	+0.000	X	+0.000	Schleifschicht	0
			DW	+0.000	Bewegung Y	0
			LW	+0.000	Ausfeuertgang	0
			T	+0.000	Verschieb schiel	0.000
			DT	+0.000		
			LT	+0.000		

PROGRAMM: SCHLEIF

Werkzeug	Koordinaten
T40	00
TABELLE NR	Halt Punkt
01	
KONIZITAT	Verweilen
0.00000	0.0

GESCHW. mm/min Tisch 43% 44%

PROGRAMM: SCHLEIF

TECNELEUCHE HYDRAUL. AUSFUEHRUNG PROGRAMME ZWISCHENRECHT GRAPHIK STAMPF KOPF HILFPUNKT TABELLEN SERVICE

Z-ACHSE Y-ACHSE TISCH ALLE AXISE

ESC F1 F2 F3 F4 F5 F6 F7 F8 F9 F10

Standard QWERTY keyboard with function keys (HOME, PG UP, END, PG DN, INS, DEL) and a Ctrl key.

START HOLD RESET + JOG -



Control panel featuring a large silver rotary knob, directional buttons, and two red emergency stop buttons.

LODI CNC control panel with two toggle switches labeled 'CNC' and 'POWER', and a prominent red emergency stop button.

T201

1 WERKZEUGMASCHINE AUS

HANDRAD
JOG Z

Z -0.002 Z +0.00
DZ +0.00
LZ +0.00

HANDRAD
JOG Y

Y -0.001 Y +0.00
DY +0.00
LY +0.00

HANDRAD
JOG W

W +0.000 W +0.00
DW +0.00
LW +0.00

T +0.000 T +0.00
DT +0.00
LT +0.00

NACHT-
SCHNITT

Geschwindigkeit mm/min		Tisch	
F:	0 43%	44%	0.000

ZUSTELLUNG
x 1

PROGRAMM: SCH

[Large blue area]

ZUSTELLUNG
x 10

ZUSTELLUNG
x 100

REFERENZ
SUCHE

MANUELL AUSFUEHREN PROGRAMME ZYKLUS ABRICHT GRAP

Z-ACHSE

Y-ACHSE

TISCH

AL
ACH

ESC

F1

F2

F3

F4

F5

F6

ESC

F1

F2

F3

F4

F5

F6

~

1

2

3

4

5

6

7

8

Tab

Q

W

E

R

T

Y

U

Caps Lock

A

S

D

F

G

H

J

K

Shift

Alt

Z

X

C

V

B

N

M

Ctrl

START

HOLD

RESET

+



LODI CNC

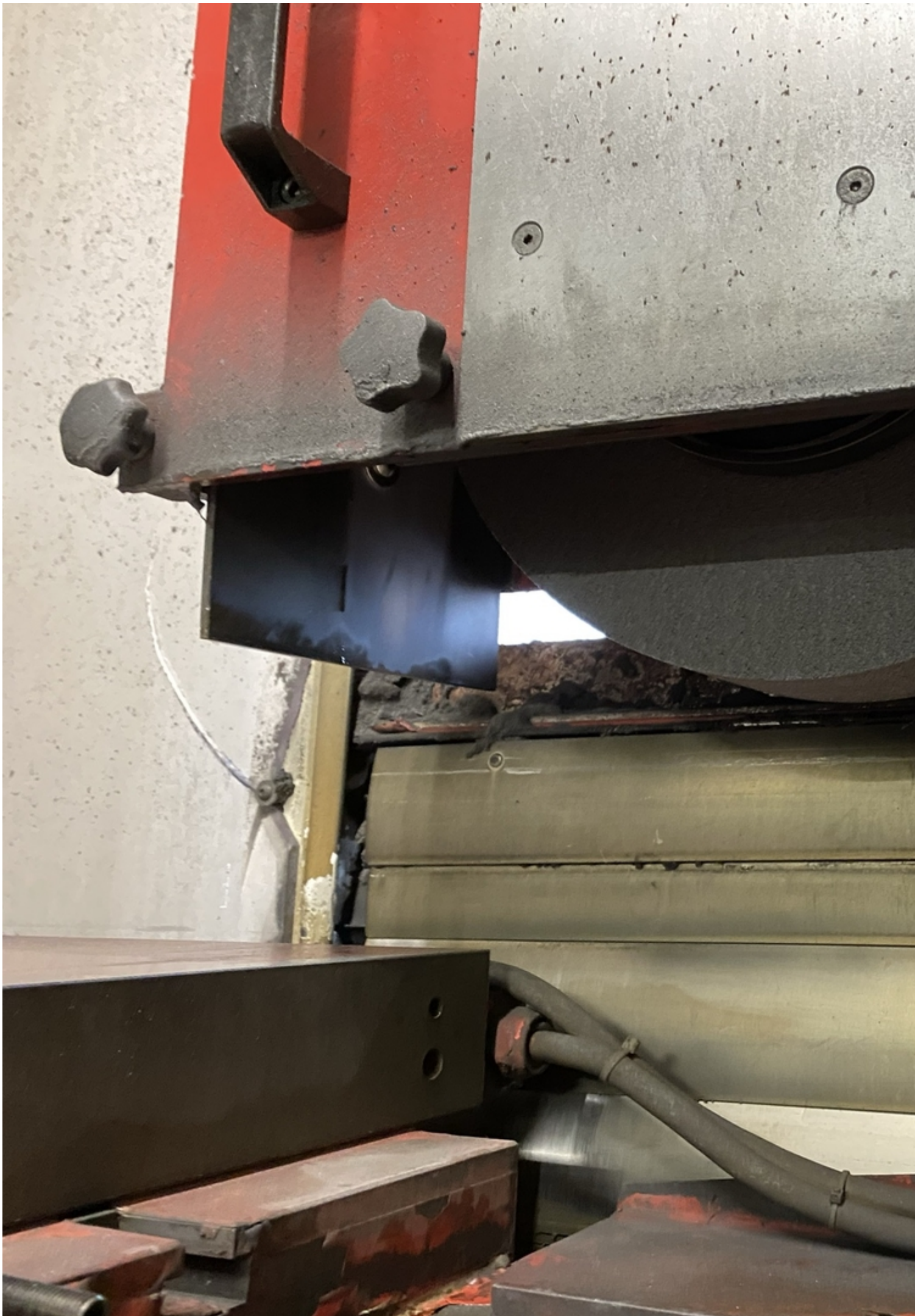














LOSMATM

LOSMA S.P.A. - 24035 CURNO (BG) ITALIA - VIA ENR
TEL. 035 46.14.44 - FAX 035 46.16.71

SERIE / BEZEICHNUNG / SERIES /

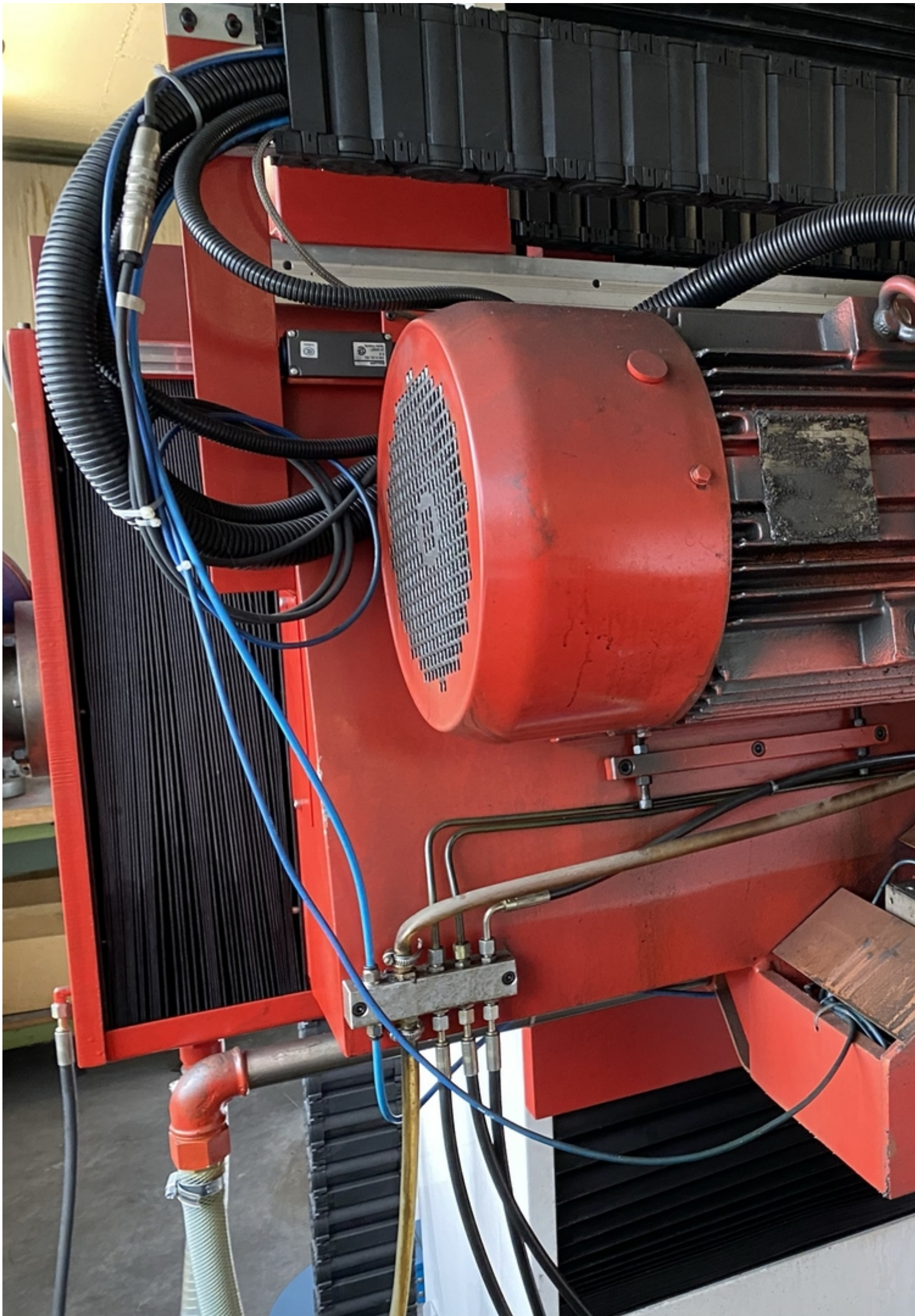
MODELLO / MODELLE / MODEL
MODELE

MATRICOLA / WERK-NR / PART N
MATRICULE

ANNO COSTRUZIONE / BAUJAHR
PRODUC. YEAR / ANNEE PRODUC







Video:



Asset-Trade

Assessment and Sale of Used Assets world wide

Am Sonnenhof 16

47800 Krefeld

Germany

Tel.: +49 2151 32500 33

Fax.: +49 2151 65 29 22

Email: info@asset-trade.de

Web.: <https://www.asset-trade.de/en>

Ref. No.:
1140-01261642

Overview and Technical Data:

LODI - 1600x800x700 Grinding machine

LODI



Year of Build:
Jan 2002

Description:

Used LODI 1600x800x700 CNC grinding machine

CNC Control Lodi T2010

Technical Data:

Travels 1600 x 800 x 700 mm

Grinding disk Diameter: 400 mm

Automatic Balancing

Technical Data:

Technical Data:

Control:

[CNC](#)

Buyer Information:

Condition:

[Very good condition](#)

Available:

[Sold](#)

Sold as:

[EXW \(Ex Works - Incoterm\)](#)

VAT:

[19 %](#)

Buyers Premium:

[16 %](#)

Location:

Germany

Images:



Maysarts 006

T2010

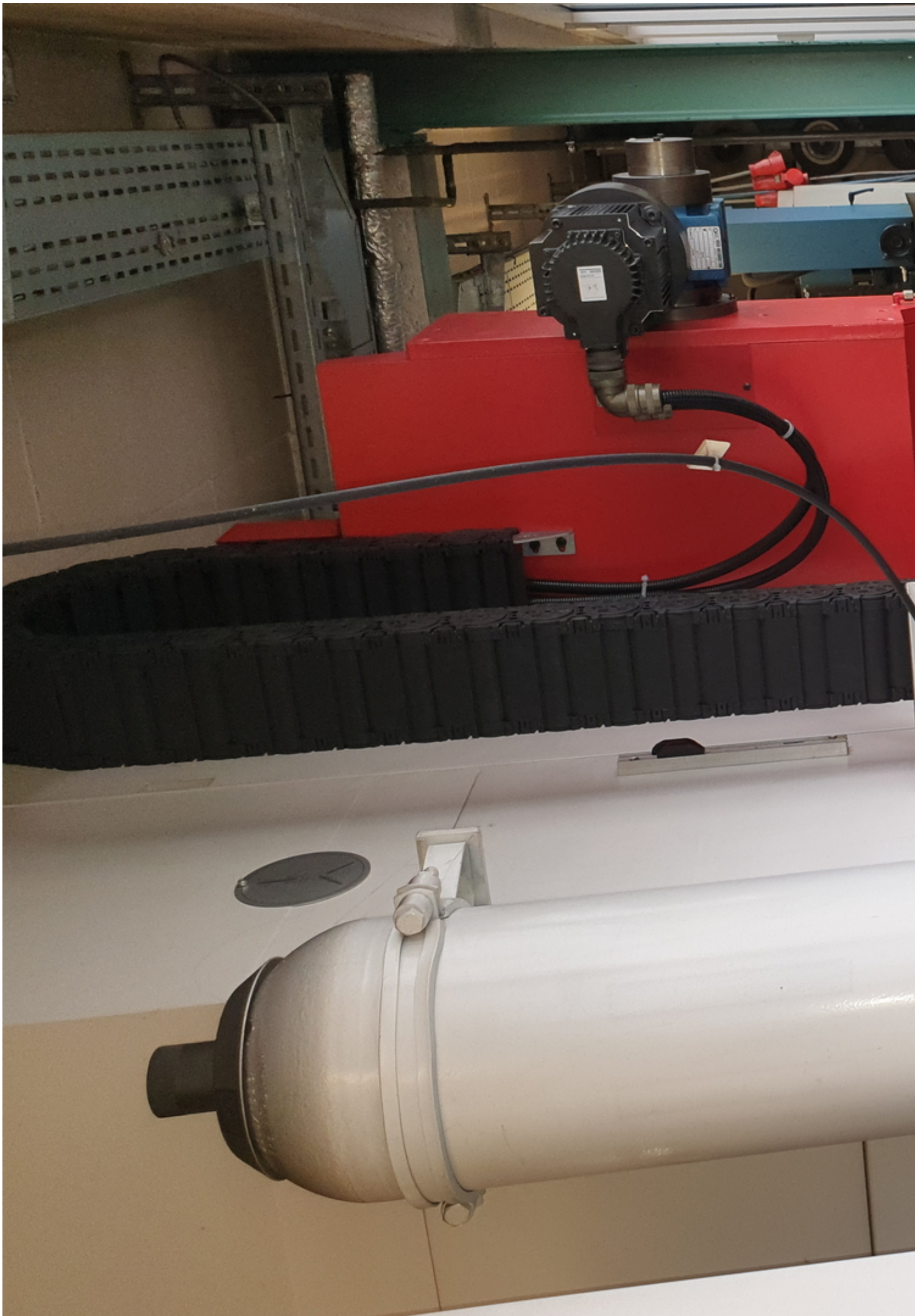


A standard QWERTY keyboard with function keys and a numeric keypad.

A control panel featuring a large analog dial, several push buttons, and two red emergency stop buttons.





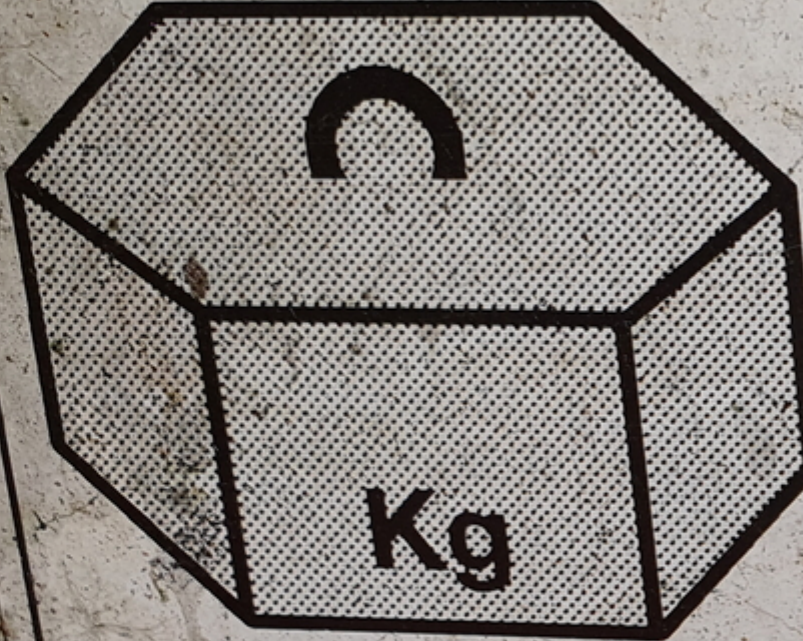


MADE IN ITALY



UCIMU - SISTEMI PER PRODURRE

Industria e Commercio Italiani per il Commercio Estero - Associazione
Equip. Macchine, Tracce, Robot e Automazione Manifatturieri Associati



MASSA Kg







T2010

1 WERKZEUGMASCHINE AUS 10:15:30

HYDRAUL. JOG Z	Z	-0.002	Z	+0.000	Start Z	0.000
HYDRAUL. JOG Y	Y	-0.001	Y	+0.000	Ende Z	0.000
HYDRAUL. JOG X	X	+0.000	X	+0.000	Schruppschicht	0.000
					Schlichtschicht	0.000
					Z zyklusbeginn	0.000
					Schleifschicht	0
					Bewegung Y	0
					Ausfeuertgang	0
					Verschieb schiel	0.000

PROGRAMM: SCHLEIF

Werkzeug	Koordinaten
T40	00
TABELLE NR	Halt Punkt
01	
KONIZITAT	Verstellen
0.00000	0.0

GESCHW. mm/min Tisch 44% 0.000

PROGRAMM: SCHLEIF

TECNELE

HYDRAULIK
SCHLEIF-SCHLEIFE
KUEHLF.
RUTO KUEHLF.
ELEKTRO KOPF
NEBENKOPF
LADUNG
LADUNG
LADUNG

ESC F1 F2 F3 F4 F5 F6 F7 F8 F9 F10

1 2 3 4 5 6 7 8 9 0 = -

Tab Q W E R T Y U I O P { } Enter

Caps Lock A S D F G H J K L ; ' /

Shift Alt Z X C V B N M < > ? / Shift

Ctrl

HOME PG UP

END PG DN

INS DEL

START HOLD RESET + JOG -



Navigation buttons: Home, Jog, Feed, Rapid, etc.

Red emergency stop button

Yellow stop button

CNC POWER 0 1

LODI CNC

Emergency stop button

T201

1 WERKZEUGMASCHINE AUS

HANDRAD
JOG Z

Z -0.002 Z +0.00
DZ +0.00
LZ +0.00

HANDRAD
JOG Y

Y -0.001 Y +0.00
DY +0.00
LY +0.00

HANDRAD
JOG W

W +0.000 W +0.00
DW +0.00
LW +0.00

T +0.000 T +0.00
DT +0.00
LT +0.00

NACHT-
SCHNITT

Geschwindigkeit mm/min	Tisch	
F: 0 43%	44%	0.000

ZUSTELLUNG
x 1

PROGRAMM: SCH

[Large blue area]

ZUSTELLUNG
x 10

ZUSTELLUNG
x 100

REFERENZ
SUCHE

MANUELL AUSFUEHREN PROGRAMME ZYKLUS ABRICHT GRAP

Z-ACHSE

Y-ACHSE

TISCH

AL
ACH

ESC

F1

F2

F3

F4

F5

F6

ESC

F1

F2

F3

F4

F5

F6

~

!

@

#

\$

%

^

&

*

1

2

3

4

5

6

7

8

Tab

Q

W

E

R

T

Y

U

Caps Lock

A

S

D

F

G

H

J

K

Shift

Alt

Z

X

C

V

B

N

M

Ctrl

START

HOLD

RESET

+



LODI CNC

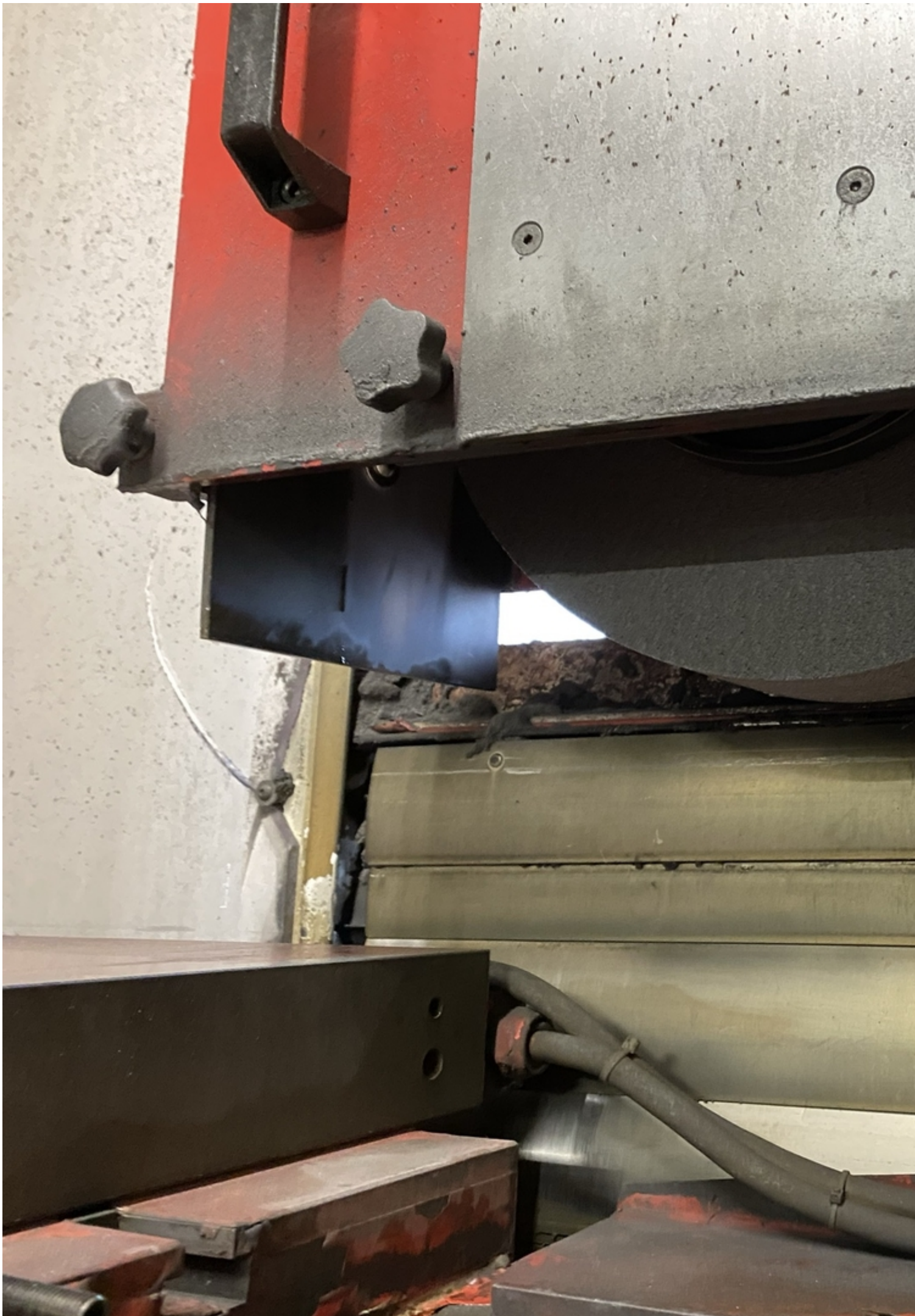














LOSMATM

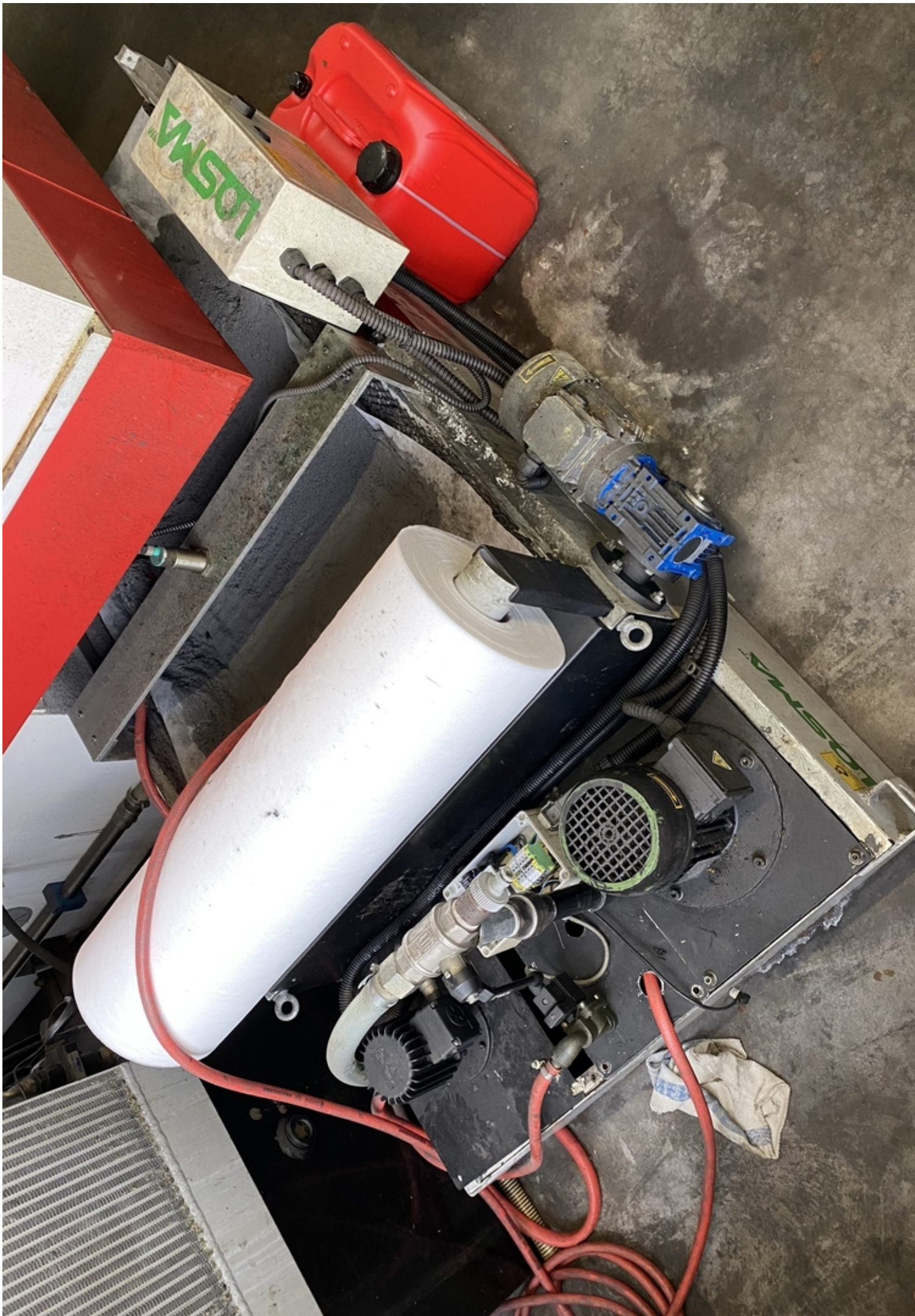
LOSMA S.P.A. - 24035 CURNO (BG) ITALIA - VIA ENR
TEL. 035 46.14.44 - FAX 035 46.16.71

SERIE / BEZEICHNUNG / SERIES /

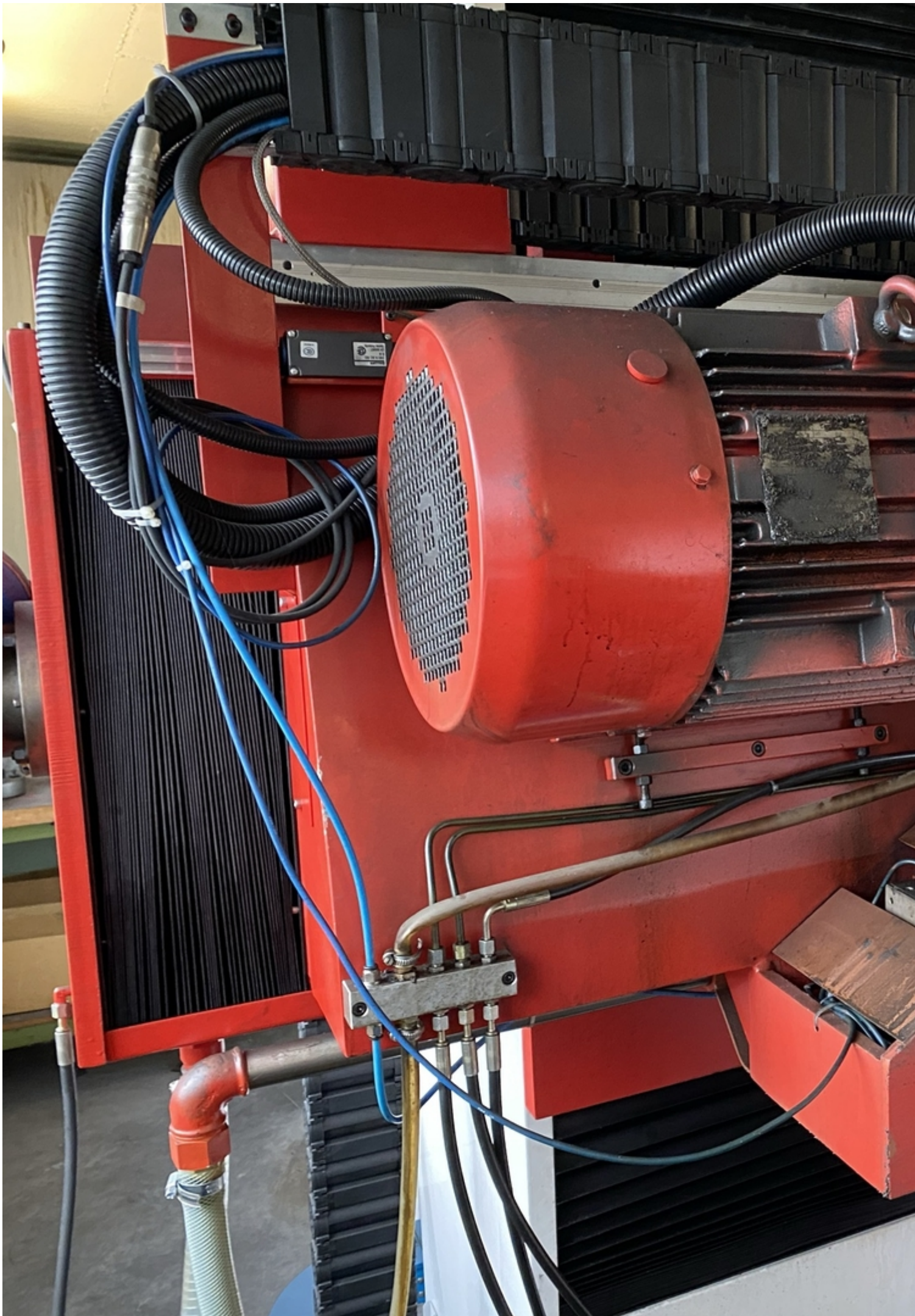
MODELLO / MODELLE / MODEL
MODELE

MATRICOLA / WERK-NR / PART N
MATRICULE

ANNO COSTRUZIONE / BAUJAHR
PRODUC. YEAR / ANNEE PRODUC







Video:



Asset-Trade

Assessment and Sale of Used Assets world wide

Am Sonnenhof 16

47800 Krefeld

Germany

Tel.: +49 2151 32500 33

Fax.: +49 2151 65 29 22

Email: info@asset-trade.de

Web.: <https://www.asset-trade.de/en>

Generated on 04.05.2026

© Copyright 2026 - [Asset-Trade](#)

Page