



# Asset-Trade

Assessment & Sale of Used Assets

Ref. No.: 1149-12031338

Overview and Technical Data:

INDEX - V200 vertical lathe

INDEX

**INDEX**

Year of Build: Jan 1988



## Description:

### Used INDEX V200 CNC lathe vertical

CNC control CNC SIEMENS 840C

Operating hours Total approx. 86646 h

Operating time 7226 hours

Technical data

Work spindle

- spindle bore diameter: 30 mm
- Power P 100 (40%) ED: 7 (10) KW
- Moment P 100 (40%): 33 (49) Nm
- Rotation speed: 5,000 rpm
- max over bed diameter LIN/REV: 270/325 mm
- max chuck diameter: 140 mm
- Spindle corner ISO 702/1 - size A4
- before bearing Bore diameter: 75 mm
- revolver: 1 12xVDI25
- Cross slide (headstock)
- Compression force (X/Y/Z): 5 000 N
- fast feed (X/Y/Z): 30/7.5/30 m/min
- Slide Huber (X/Y/Z): 520/120/200 mm

Tool Table

- Tool system DIN 69880: 30 x 55 mm
- Table dimensions length x height: 1054 x 400 mm
- Number of vertical grooves: 13, width 10 mm
- Number of horizontal grooves: 7, width 10 mm, DIN 650

Dimensions and weight

- length: 2 300 mm
- width: 2 100 mm
- height: 2 350 mm



- Weight: 3 300 kg

According to equipment power: 16-38 KW (20-48 KVA)



## Technical Data:

### Technical Data:

Control: SINUMERIK 840C  
Machine Hours: 86646.00 hrs.  
Spindle Hours: 7226.00 hrs.  
Turning diameter: 270.00 mm  
Spindle Speed: 5000.00 rpm  
Tool Capacity: 12 x  
Tailstock: No  
Bezel: No

### Dimensions and Weight:

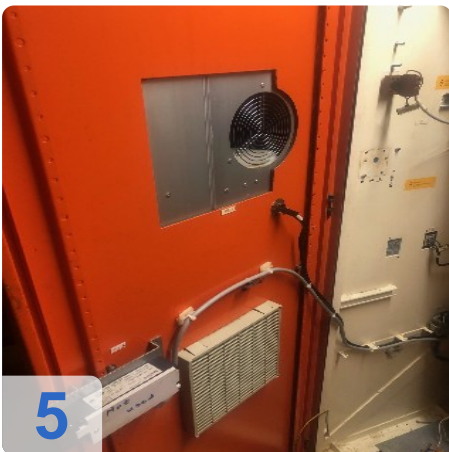
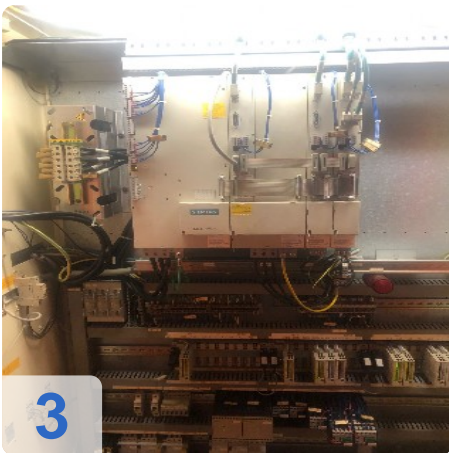
Height: 2350 mm  
Length: 2300 mm  
Width: 2100 mm  
Weight: 3300 kg

### Buyer Information:

Condition: Very good condition  
Available: Immediately  
Sold as:  
EXW (Ex Works - Incoterm)  
VAT: 19 %  
Buyers Premium: 16 %  
Location: Germany



## Images:





AS

e

Assets



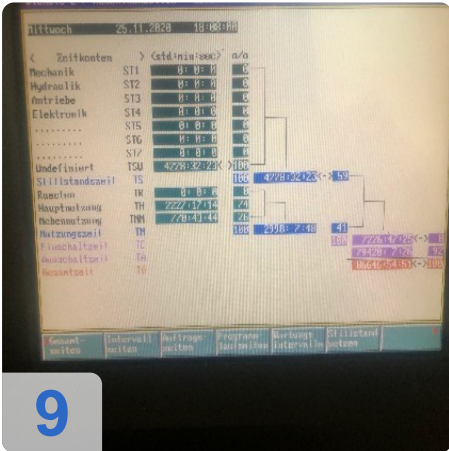
6



7



8



9



# Asset-Trade

Assessment & Sale of Used Assets



# Asset-Trade

Assessment & Sale of Used Assets

QR Code for <https://www.asset-trade.de/en/print/pdf/node/7049>

**Asset-Trade**

**Assessment and Sale of Used Assets world  
wide**

**Am Sonnenhof 16**

**47800 Krefeld**

**Germany**

**Tel.: +49 2151 32500 33**