



Image not found or type unknown

Ref. No.:

1150-12111225

Overview and Technical Data:

EMCO - Compact 5 Mini-Lathe

EMCO

[REDACTED]

Year of Build:
Jan 1990

Description:

Used EMCO compact 5 Mini-Lathe

Build 1990

Further DATA:

Compact 5 with the milling and drilling head fitted: capacity 2.56" x 13.78" (65 mm x 350 mm) with 6 spindle speeds from 200 to 2400 rpm. Long established and very popular, the Emco Compact 5 in its basic form does requires a number of accessories to turn it into a useful work tool - if you are looking at a used example the most import accessories are a swivelling top slide (often referred to as the "compound" and the automatic carriage-feed mechanism - a 2-speed device that included 6 changewheels and a push/pull engagement knob for the dog clutch. Using the unit gave two rates of fine longitudinal feed (0.07 mm (0.003")/rev and 0.14 mm (0.006")/rev and five metric thread pitches (0.4, 0.6, 1.0, 1.25 and 1.5 mm) - though only four (16, 20, 24 and 32 t.p.i.) on inch machines. To make the screwcutting system complete a further set of 7 seven changewheels were offered that allowed, on metric lathes (with a 1.5 mm leadscrew), the generation 10 metric pitches from 0.25 to 2.5 mm and 14 inch pitches from 10 to 48 t.p.i. On inch models - the leadscrew was 16 t.p.i.) 13 pitches from 10 to 10 to 64 t.p.i. were provided together with 11 metric from 0.25 to 1.75 mm.

Running in deep-groove, sealed-for-life ball bearings the headstock spindle was bored through 16 mm, had a No. Morse taper socket and was equipped with a safe (though slow-to-change) "bolt-on" spindle nose flange. Driven by a 500 Watt motor, six spindle speeds were provided that ranged from 200 to 2400 r.p.m. on a 50-cycle supply and 250 to 2800 on 60-cycle (as used in North America). The speed range is pretty well spot-on for small modelling work, allowing larger casting to be turned as well as small pins.

Able to be set over for the turning of slight tapers, the tailstock carried a 22 mm diameter spindle fitted with a No. 1 Morse taper socket.

The usual wide range of factory-supplied accessories was available including (in addition to those already mentioned) a very useful if rather lightly-built power vertical milling and drilling head, 3 and 4-jaw chucks, dividing attachment, a T-slotted faceplate (also used as a "clamping plate" on the dividing attachment), T-slotted boring table, tailstock chucks and rotating centres, turning, threading and boring tool sets, a 2-way toolpost, quick-set toolpost, fixed and travelling steadies, top slide, splash guard and a collet attachment to take ESX collets from 1.5 to 14 mm.

Technical Data:

Technical Data:

Control:

[CNC](#)

Turning lenght:

350.00 mm

Turning diameter:

65.00 mm

Spindle Speed:

2400.00 rpm

Tailstock:

Yes

Bezel:

No

Dimensions and Weight:

Weight:

50 kg

Buyer Information:

Condition:

[Very good condition](#)

Available:

[Sold](#)

Sold as:

[EXW \(Ex Works - Incoterm\)](#)

VAT:

[19 %](#)

Buyers Premium:

[16 %](#)

Location:

Germany

Images:



GRUNDAUSSTATTUNG

Maschinenbett, Spindelstock, Reitstock, Längs- und Querschlitten mit Einfachstahlhalter, Drehherz mit Sicherheitsmitnehmerscheibe, Körnerspitze MK1, Körnerspitze MK2, Drehstahlunterlagen, Bedienungswerkzeug, Betriebsanleitung, Serviceteilliste.

Elektrik: Einphasen-Wechselstrommotor (220 – 230 V, 50 Hz) mit Motorschalter und Hauptschalter.

Best.-Nr. 200 1AA

TECHNISCHE DATEN Drehmaschine

Spitzenhöhe	65 mm
Spitzenweite	350 mm
Drehdurchmesser über Bett	130 mm
Drehdurchmesser über Querschlitten	80 mm
Verschiebeweg Querschlitten	50 mm
Leitspindel \varnothing	12 mm
Leitspindelsteigung	1,5 mm
Nettogewicht ca.	20 kg
Aufstellfläche	980x470 mm

Spindelstock

Hauptspindelbohrung	16 mm
Spindelinnenkonus	Werksnorm MK 2
Anzahl der Drehzahlen	6
Drehzahlbereich	200–2400 U/min
Motor: Aufnahmeleistung (P1)	500 W S3–60%

Reitstock

Pinolen \varnothing	22 mm
Reitstockkonus	MK 1
Pinolenhub	35 mm

Gewinde und Vorschübe mit Vorschubeinheit (Zubehör)

Vorschübe:

2 längs	0,07 mm/U
	0,14 mm/U

Gewinde

Zusätzliche Gewinde mit dem 2

metrische	0,25 mm	0,75 mm
	0,3 mm	0,8 mm
	0,35 mm	1,75 mm
	0,5 mm	2,0 mm
	0,7 mm	2,5 mm

Rechts- und Linksgewinde

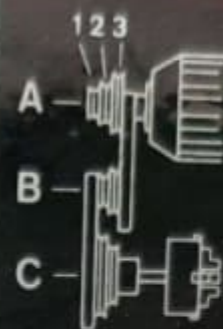
Technische Änderungen, die der Produktion wir uns vor.

Fragen Sie Ihren Fachberater nach der 74 Seiten starken, reich illustrierten Betriebsanleitung. Darin finden Sie auch viele praktische Tips und wertvolle Hinweise wie man richtig Dreh-, Fräs- und Bohroperationen durchführt und Zubehöre sinnvoll einsetzt.

Best.-Nr. DE 200 1

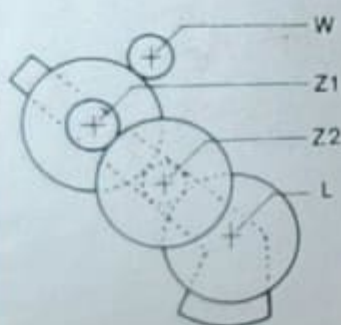



mm/	0,07	0,14
	W	20
	Z1	25 60
	Z2	60 20
	L	H60




200

BC1



mm	0,4	0,5	0,6	0,7
	W	20	20	20
	Z1	H 60	H 72	H 60
	Z2	20 25	25 30	60 50
	L	60 H	50 H	60 H

n/1"	10	11	12	14
	W	20	20	20
	Z1	H 60	H 72	H 60
	Z2	72 34	60 26	72 34
	L	25 H	30 H	30 H

EMCO *com*





EMCO Compact
230 V~ 50 Hz 1/N/P
 $I_M = I_{max} = 2,3 A$ S3-60%
E-Doku. Ser.-No.:
Fabr.-No.: ASA J4 010
Baujahr / Year of constr.:
Made by EMCO MAIER Ges.m.b.H., Hallein/AUSTRIA







Asset-Trade

Assessment and Sale of Used Assets world wide

Am Sonnenhof 16

47800 Krefeld

Germany

Tel.: +49 2151 32500 33

Fax.: +49 2151 65 29 22

Email: info@asset-trade.de

Web.: <https://www.asset-trade.de/en>

Ref. No.:
1150-12111225

Overview and Technical Data:

EMCO - Compact 5 Mini-Lathe

EMCO

[REDACTED]

Year of Build:
Jan 1990

Description:

Used EMCO compact 5 Mini-Lathe

Build 1990

Further DATA:

Compact 5 with the milling and drilling head fitted: capacity 2.56" x 13.78" (65 mm x 350 mm) with 6 spindle speeds from 200 to 2400 rpm. Long established and very popular, the Emco Compact 5 in its basic form does requires a number of accessories to turn it into a useful work tool - if you are looking at a used example the most import accessories are a swivelling top slide (often referred to as the "compound" and the automatic carriage-feed mechanism - a 2-speed device that included 6 changewheels and a push/pull engagement knob for the dog clutch. Using the unit gave two rates of fine longitudinal feed (0.07 mm (0.003")/rev and 0.14 mm (0.006")/rev and five metric thread pitches (0.4, 0.6, 1.0, 1.25 and 1.5 mm) - though only four (16, 20, 24 and 32 t.p.i.) on inch machines. To make the screwcutting system complete a further set of 7 seven changewheels were offered that allowed, on metric lathes (with a 1.5 mm leadscrew), the generation 10 metric pitches from 0.25 to 2.5 mm and 14 inch pitches from 10 to 48 t.p.i. On inch models - the leadscrew was 16 t.p.i.) 13 pitches from 10 to 10 to 64 t.p.i. were provided together with 11 metric from 0.25 to 1.75 mm.

Running in deep-groove, sealed-for-life ball bearings the headstock spindle was bored through 16 mm, had a No. Morse taper socket and was equipped with a safe (though slow-to-change) "bolt-on" spindle nose flange. Driven by a 500 Watt motor, six spindle speeds were provided that ranged from 200 to 2400 r.p.m. on a 50-cycle supply and 250 to 2800 on 60-cycle (as used in North America). The speed range is pretty well spot-on for small modelling work, allowing larger casting to be turned as well as small pins.

Able to be set over for the turning of slight tapers, the tailstock carried a 22 mm diameter spindle fitted with a No. 1 Morse taper socket.

The usual wide range of factory-supplied accessories was available including (in addition to those already mentioned) a very useful if rather lightly-built power vertical milling and drilling head, 3 and 4-jaw chucks, dividing attachment, a T-slotted faceplate (also used as a "clamping plate" on the dividing attachment), T-slotted boring table, tailstock chucks and rotating centres, turning, threading and boring tool sets, a 2-way toolpost, quick-set toolpost, fixed and travelling steadies, top slide, splash guard and a collet attachment to take ESX collets from 1.5 to 14 mm.

Technical Data:

Technical Data:

Control:

[CNC](#)

Turning lenght:

350.00 mm

Turning diameter:

65.00 mm

Spindle Speed:

2400.00 rpm

Tailstock:

Yes

Bezel:

No

Dimensions and Weight:

Weight:

50 kg

Buyer Information:

Condition:

[Very good condition](#)

Available:

[Sold](#)

Sold as:

[EXW \(Ex Works - Incoterm\)](#)

VAT:

[19 %](#)

Buyers Premium:

[16 %](#)

Location:

Germany

Images:



GRUNDAUSSTATTUNG

Maschinenbett, Spindelstock, Reitstock, Längs- und Querschlitzen mit Einfachstahlhalter, Drehherz mit Sicherheitsmitnehmerscheibe, Körnerspitze MK1, Körnerspitze MK2, Drehstuhlunterlagen, Bedienungswerkzeug, Betriebsanleitung, Serviceteilliste.

Elektrik: Einphasen-Wechselstrommotor (220 – 230 V, 50 Hz) mit Motorschalter und Hauptschalter.

Best.-Nr. 200 1AA

TECHNISCHE DATEN Drehmaschine

Spitzenhöhe	65 mm
Spitzenweite	350 mm
Drehdurchmesser über Bett	130 mm
Drehdurchmesser über Querschlitzen	80 mm
Verschiebeweg Querschlitzen	50 mm
Leitspindel \varnothing	12 mm
Leitspindelsteigung	1,5 mm
Nettogewicht ca.	20 kg
Aufstellfläche	980x470 mm

Spindelstock

Hauptspindelbohrung	16 mm
Spindelinnenkonus	Werksnorm MK 2
Anzahl der Drehzahlen	6
Drehzahlbereich	200–2400 U/min
Motor: Aufnahmeleistung (P1)	500 W S3–60%

Reitstock

Pinolen \varnothing	22 mm
Reitstockkonus	MK 1
Pinolenhub	35 mm

Gewinde und Vorschübe mit Vorschubeinheit (Zubehör)

Vorschübe:

2 längs	0,07 mm/U
	0,14 mm/U

Gewinde

Zusätzliche Gewinde mit dem 2

metrische	0,25 mm 0,75 mm
	0,3 mm 0,8 mm
	0,35 mm 1,75 mm
	0,5 mm 2,0 mm
	0,7 mm 2,5 mm

Rechts- und Linksgewinde

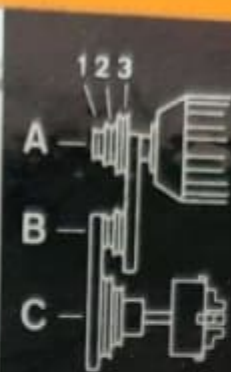
Technische Änderungen, die der Pro-
ten wir uns vor.

Fragen Sie Ihren Fachberater nach der 74 Seiten starken, reich illustrierten Betriebsanleitung. Darin finden Sie auch viele praktische Tips und wertvolle Hinweise wie man richtig Dreh-, Fräs- und Bohroperationen durchführt und Zubehöre sinnvoll einsetzt.

Best.-Nr. DE 200 1

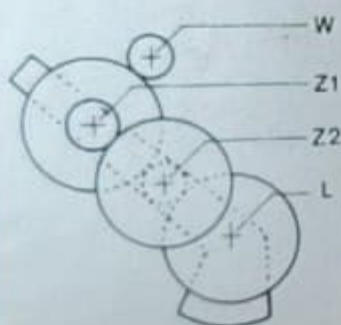



mm/	0,07	0,14
	W	20
	Z1	25 60
	Z2	60 20
	L	H60




200

BC1



mm	0,4	0,5	0,6	0,7
	W	20	20	20
	Z1	H 60	H 72	H 60
	Z2	20 25	25 30	60 50
	L	60 H	50 H	60 H

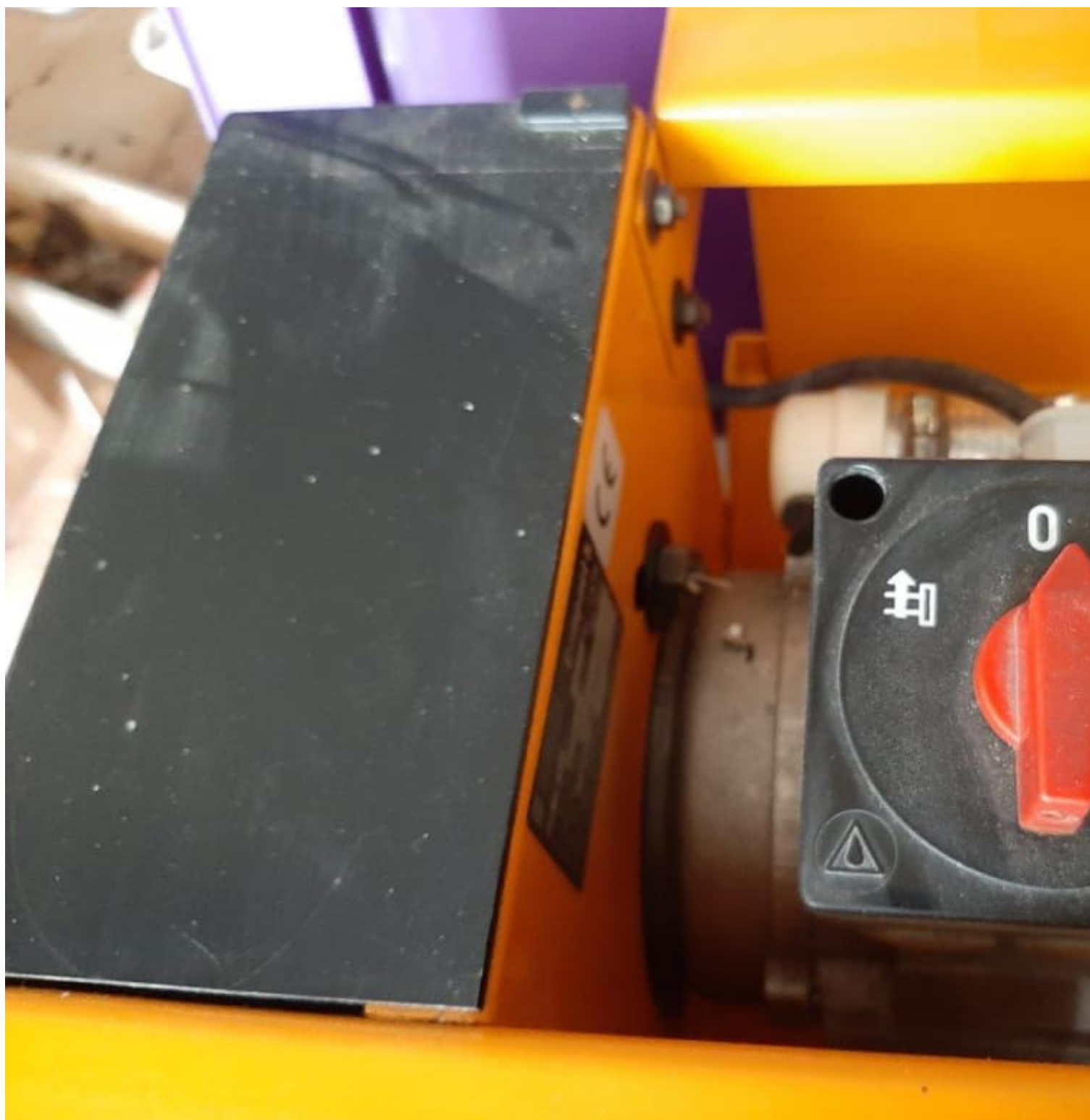
n/1"	10	11	12	14
	W	20	20	20
	Z1	H 60	H 72	H 60
	Z2	72 34	60 26	72 34
	L	25 H	30 H	30 H

EMCO *com*





EMCO Compact
230 V~ 50 Hz 1/N/P
 $I_M = I_{max} = 2,3 A$ S3-60%
E-Doku. Ser.-No.:
Fabr.-No.: ASA J4 010
Baujahr / Year of constr.:
Made by EMCO MAIER Ges.m.b.H., Hallein/AUSTRIA







Asset-Trade

Assessment and Sale of Used Assets world wide

Am Sonnenhof 16

47800 Krefeld

Germany

Tel.: +49 2151 32500 33

Fax.: +49 2151 65 29 22

Email: info@asset-trade.de

Web.: <https://www.asset-trade.de/en>

Generated on 13.02.2026

© Copyright 2026 - [Asset-Trade](#)

Page