

Image not found or type unknown

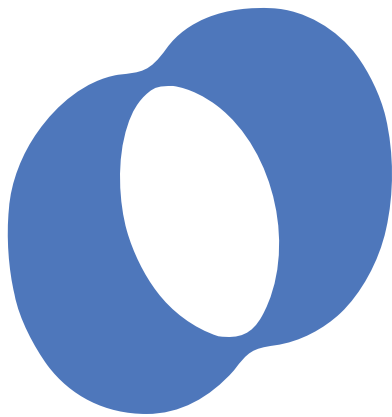


Ref. No.:
1201-01081321

Overview and Technical Data:

MAKINO - EU 64 CNC Wire Eroding Machine

[MAKINO](#)



MAKINO

Year of Build:
Jan 2001

Description:

Used MAKINO EU 64 CNC Eroding machines EDM - wire cutting machines

CNC Controller Type: MGW N2

Technical Data

- Travels
 - X-Axis: 650 mm
 - Y-Axis: 400 mm
 - Z-Axis: 320 mm
- U/V axes: +/-101mm
- Table: 930 x 680 mm
- Worktank : 1.140x1.000mm
- Max Workpiece size: 930x 680x 300 mm
- Max weight of piece 1500 kgs
- Vorschübe X/Y/Z 2.000 mm/min
- U/V 1.000 mm/min
- taper machining +/- 35mm at 100mm thickness

- Total Power:8,1 kW
- Dimensions LxWxH, ca. 3x3x2,3mm
- weight: ca. 4,5
- Automatic Wire Feeding: Yes

Technical Data:

Technical Data:

Control:

[CNC](#)

Dimensions and Weight:

Height:

2.300 mm

Length:

3.000 mm

Width:

3.000 mm

Weight:

4.500 kg

Buyer Information:

Condition:

[Very good condition](#)

Available:

[Sold](#)

Sold as:

[EXW \(Ex Works - Incoterm\)](#)

VAT:

[19 %](#)

Buyers Premium:

[16 %](#)

Location:

Germany

Images:



1

CAUTION
 Only a specific person must do maintenance and the operation of the machine.
 Only the person whom his name is specified must repair the machine.

Handwritten note on a yellow sticky paper, partially illegible.

MGW-N2



RUN MANUELL RAPID 09:53
 MASCHINE RELATIV ARBEIT
 X 269.877 0.000 -80.686
 Y 293.133 0.000 -18.524
 Z 77.000 0.000 0.000
 89.000 0.000 49.393
 MODEL: G= 00 28 40 43 47 58 580 54 89 72 81
 H= 18 29 A= 0 P= 0.000 S= 0
 I= 0.152 F= 58 R= 0.000
 H= 0.000 E= 1000 T= 0.000
 MANUELL: SLOW
 VORSCHUB LOW MID HIGH
 SCHRITT x 10
 HANDBREI
 WASSERSTAND IM WERKTANK 2/1 NIEDRIG
 MANUELL RUN MEMORY POSITION REF. Pkt. RELATIV ARBEIT
 RUN RUN RUN ANZEIGE FÄHREN SETZEN SETZEN

Emergency stop control panel with a red stop button and several function buttons labeled with symbols and letters like Z+, Z-, C-, C+, and UV.

Main control keypad with 16 function keys (F1-F16), a HELP key, and a grid of alphanumeric keys. Includes a numeric keypad and special keys like START, RESET, BUZZER OFF, and WARM RESET.

Bottom control section featuring a large red emergency stop button, indicator lights for SOURCE, MACH-FELD, SERVO, and COORDIN, and a POWER switch with ON/OFF positions.



MAKINO

R U N | MANDELL RAPID 09:00

| MASCHINE | RELATIV | ARBEIT |
|----------|---------|---------|
| 369.875 | 0.000 | -80.686 |
| 293.138 | 0.000 | -18.524 |
| 75.079 | 0.000 | 0.000 |
| 17.893 | 0.000 | 0.000 |
| 69.393 | 0.000 | 49.393 |

MANDELL
RESET STS

WARNING 2P
INCREMENTAL

W

WASSERSTAND IM WERKTANK ZU NIEDRIG

| MANDELL | MDI | MEMORY | POSITION | REF. PKT. | RELATIV | ARBEIT |
|---------|-----|--------|----------|-----------|---------|--------|
| ON | RUN | RUN | ANZEIGE | FAHREN | SETZEN | SETZEN |

1-1 1-2 1-3 1-4 1-5 1-6 1-7 1-8 1-C

RUN NC FUNC SET EDIT COND POS RUN PROG GRAPH DGN MACH OPERATE AUTO PROG

JET O N G X Y Z 7 8 9

GUIDE OPEN M S T I J K 4 5 6

RETRACT F D H A B C 1 2 3

START RESET P Q R U V W - . 0

SEARCH []

ERASE []

ADD IN []

BUZZER OFF []

WARN RESET []

CTRL ESC

READY

ADJUST

SOURCE

MACHINING

SERVO

CONDITION

POWER

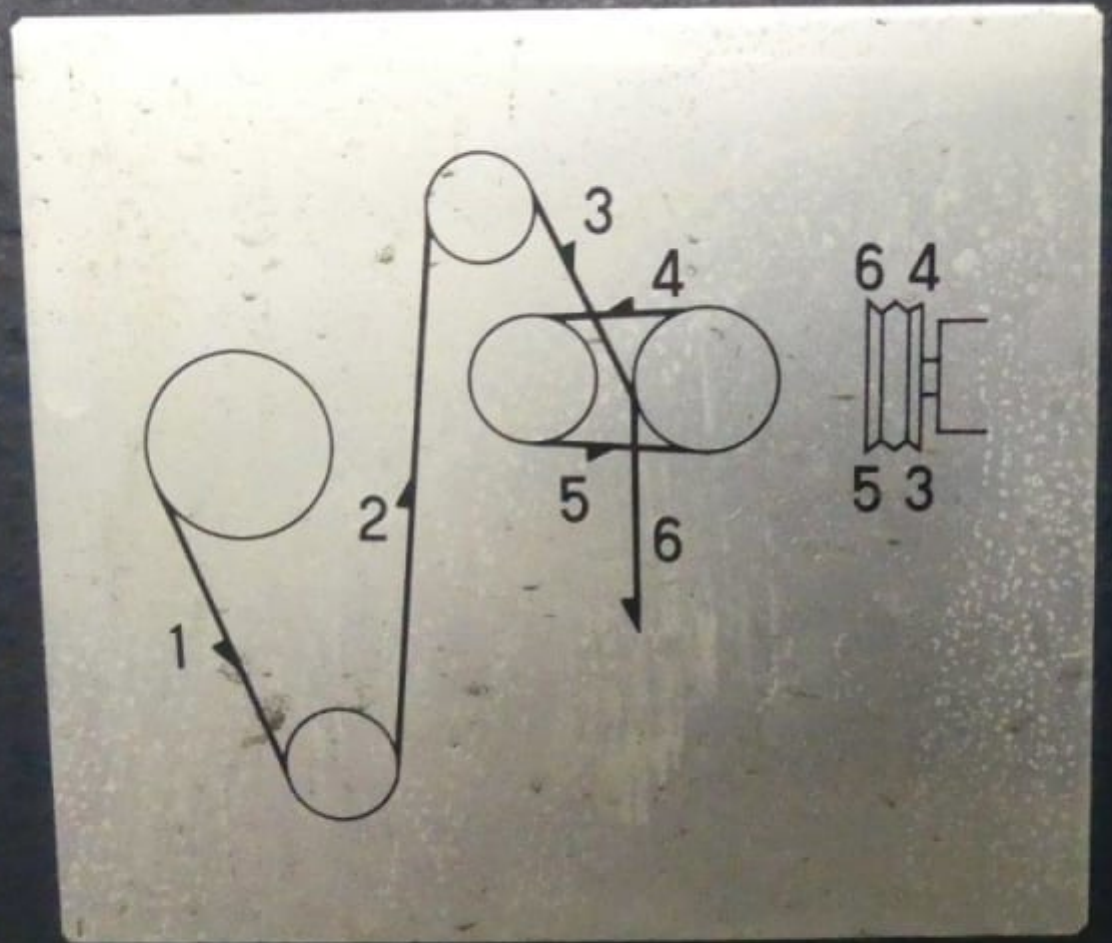


5



6

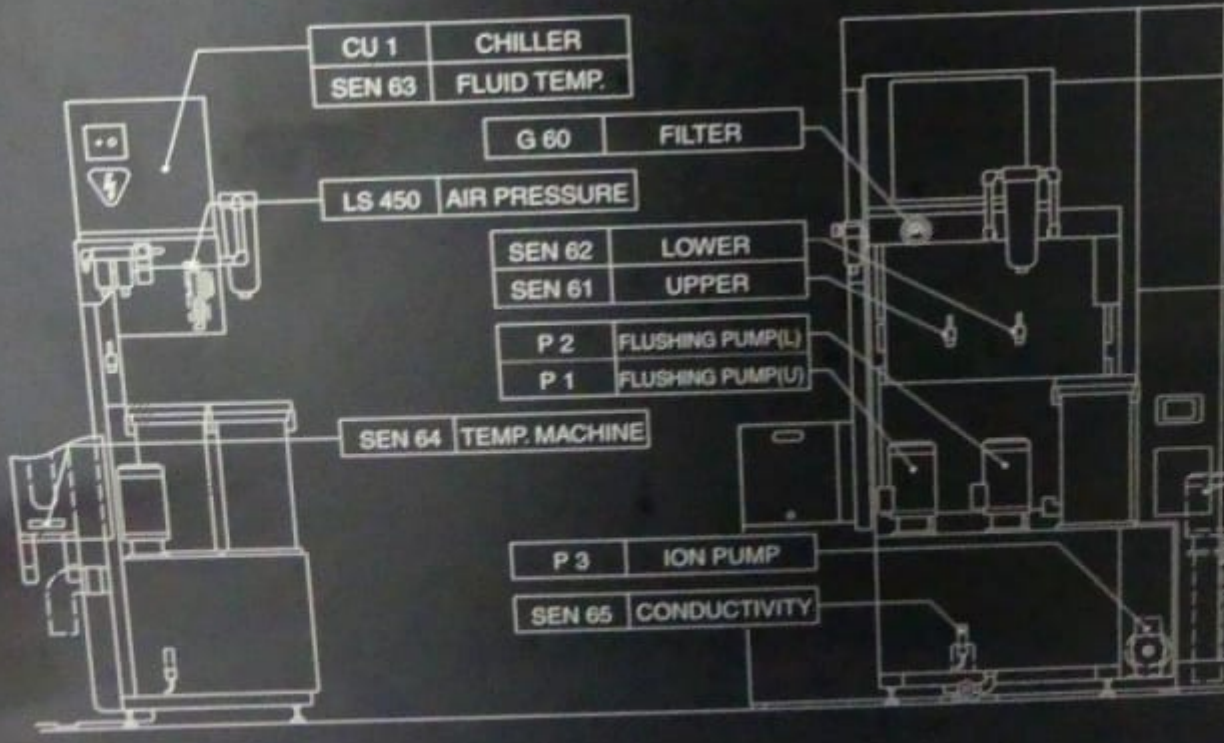
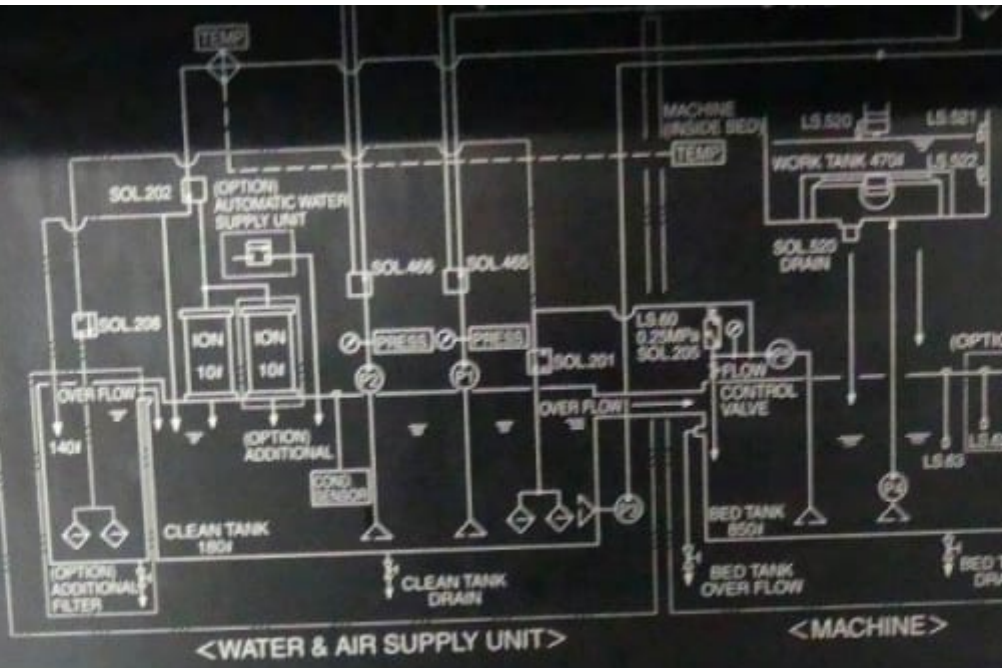




NOTE

TURN ON THE "GUIDE OPEN" KEY







MAKINO

MA MACHINE SERIAL NO

W6007

LM MACHINE SERIAL NO

80-4164-

TYPE

EU 64

DATE

MADE IN SINGAPORE

UNDER LICENSE FROM MAKINO MILLING M

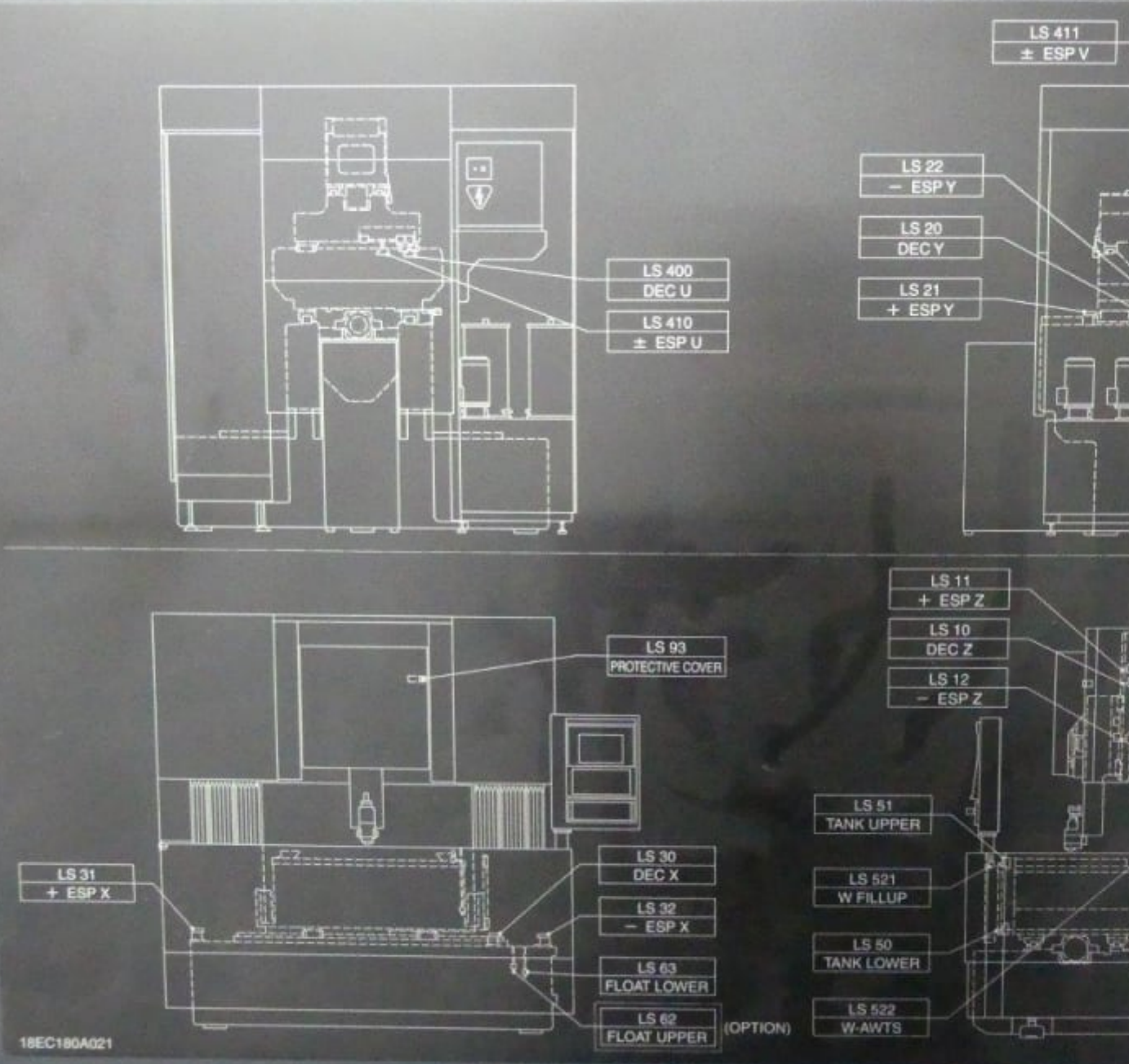
1VS110A705-00

CO LTD

ORION UNIT COOLE

| | | | |
|----------|----------------|------------|------|
| MODEL | RKS-750-CMC-CE | SERIAL No. | 20 |
| CAPACITY | 2.52/2.80kW | SOURCE | 3ph |
| MASS | 45kg | FREQ. | 50/6 |
| REFRIG. | R-407C, 600g | INPUT | 0.67 |
| LIST No. | RB137 | CURRENT | 2.4/ |

ORION MACHINERY CO. LTD.











Video:



Asset-Trade

Assessment and Sale of Used Assets world wide

Am Sonnenhof 16

47800 Krefeld

Germany

Tel.: +49 2151 32500 33

Fax.: +49 2151 65 29 22

Email: info@asset-trade.de

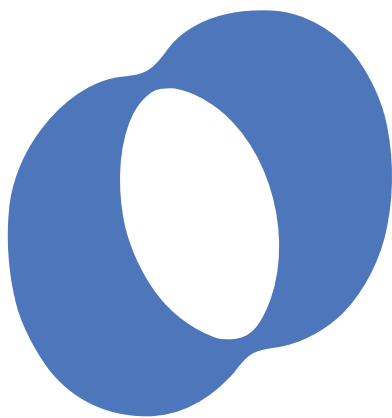
Web.: <https://www.asset-trade.de/en>

Ref. No.:
1201-01081321

Overview and Technical Data:

MAKINO - EU 64 CNC Wire Eroding Machine

MAKINO



MAKINO

Year of Build:
Jan 2001

Description:

Used MAKINO EU 64 CNC Eroding machines EDM - wire cutting machines

CNC Controller Type: MGW N2

Technical Data

- Travels
 - X-Axis: 650 mm

- Y-Axis: 400 mm
- Z-Axis: 320 mm
- U/V axes: +/-101mm
- Table: 930 x 680 mm
- Worktank : 1.140x1.000mm
- Max Workpiece size: 930x 680x 300 mm
- Max weight of piece 1500 kgs
- Vorschübe X/Y/Z 2.000 mm/min
- U/V 1.000 mm/min
- taper machining +/- 35mm at 100mm thickness
- Total Power:8,1 kW
- Dimentions LxWxH, ca. 3x3x2,3mm
- weight: ca. 4,5
- Automatic Wire Feeding: Yes

Technical Data:

Technical Data:

Control:

[CNC](#)

Dimensions and Weight:

Height:

2.300 mm

Length:

3.000 mm

Width:

3.000 mm

Weight:

4.500 kg

Buyer Information:

Condition:

[Very good condition](#)

Available:

[Sold](#)

Sold as:

[EXW \(Ex Works - Incoterm\)](#)

VAT:

[19 %](#)

Buyers Premium:

[16 %](#)

Location:

Germany

Images:



1

CAUTION
 Only a specific person must do maintenance and the operation of the machine.
 Only the person whom his name is specified must repair the machine.

Handwritten note on a yellow sticky paper, partially illegible.

MGW-N2



RUN MANUELL RAPID 09:53
 MASCHINE RELATIV ARBEIT
 X 269.877 0.000 -80.686
 Y 293.113 0.000 -18.524
 Z 77.000 0.000 0.000
 89.000 0.000 49.393
 MODEL: G= 00 28 40 43 47 58 580 54 89 72 81
 H= 18 29 A= 0 P= 0.000 S= 0
 I= 0.152 F= 58 R= 0.000
 H= 0.000 E= 1000 T= 0.000
 MANUELL: EILIGKEIT
 VORSCHUB LOW MID HIGH
 SCHRITT x 10
 HANDBREIT
 WASSERSTAND IM WERKTANK 2/1 NIEDRIG
 MANUELL RUN MEMORY POSITION REF. Pkt. RELATIV ARBEIT
 RUN RUN RUN ANZEIGE FÄHREN SETZEN SETZEN

WARNING OFF
 INCREMENTAL

Emergency stop control panel with a red push-button and several smaller function buttons labeled with symbols and letters like Z+, Z-, C-, C+, and UV.

Main control keypad with 16 function keys (F1-F16), a HELP key, and a grid of alphanumeric keys (Q-Z, 0-9, F, D, H, A, B, C, P, Q, R, U, V, W, /, SPACE, EOB, CE, INS, BS, IN, CTRL, ESC). Special keys include RUN, NC FUNC, SET, EDIT, COND, POS, RUN PROG, GRAPH, DGN, MACH OPERATE, AUTO PROG, JET, SLIDE OPEN, RETRACT, BUZZER OFF, and WARM RESET.

Bottom control panel featuring a large red emergency stop button, a green START button, and a red STOP button. It also includes indicator lights for SOURCE, MACH-READY, DEFECT, and COORDINAT, along with a POWER switch.



MAKINO

R U N | MANDELL RAPID 09:00

| MASCHINE | RELATIV | ARBEIT |
|----------|---------|---------|
| 369.875 | 0.000 | -80.686 |
| 293.138 | 0.000 | -18.524 |
| 75.079 | 0.000 | 0.000 |
| 17.893 | 0.000 | 0.000 |
| 69.393 | 0.000 | 49.393 |

MANDELL
RESET STS

WARNING 2P
INCREMENTAL

W

WASSERSTAND IM WERTANK ZU NIEDRIG

| MANDELL | MDI | MEMORY | POSITION | REF. PKT. | RELATIV | ARBEIT |
|---------|-----|--------|----------|-----------|---------|--------|
| ON | RUN | RUN | ANZEIGE | FAHREN | SETZEN | SETZEN |

1-1 1-2 1-3 1-4 1-5 1-6 1-7 1-8 1-C

RUN NC FUNC SET EDIT COND POS RUN PROG GRAPH DGN MACH OPERATE AUTO PROG

JET O N G X Y Z 7 8 9

GUIDE OPEN M S T I J K 4 5 6

RETRACT F D H A B C 1 2 3

START RESET P Q R U V W - . 0

SEARCH [] []

ERASE [] []

ADD IN [] []

BUZZER OFF WARN RESET

CTRL ESC

READY

ADJUST

SOURCE MACHINING SERVO CONDITION

POWER

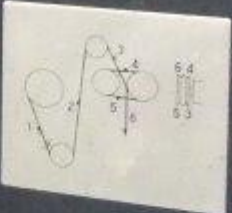
0



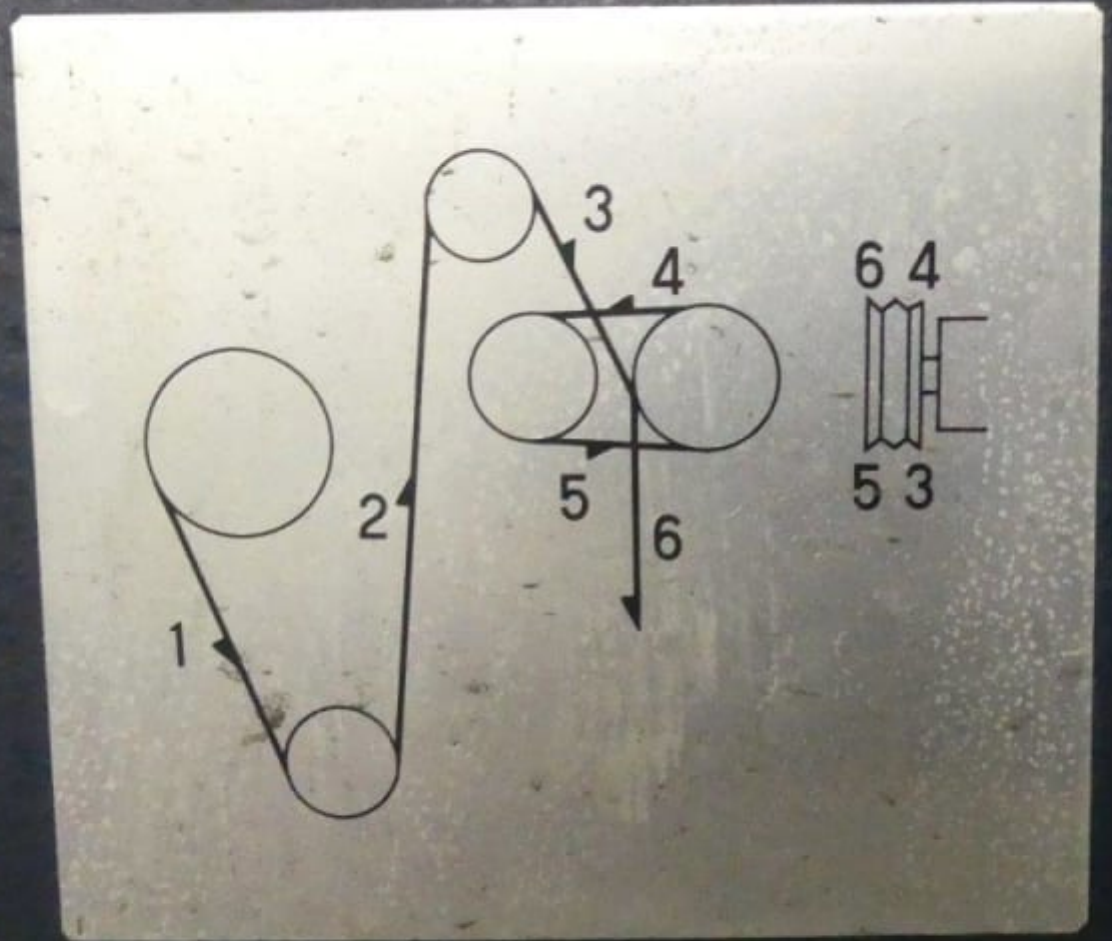
5



6



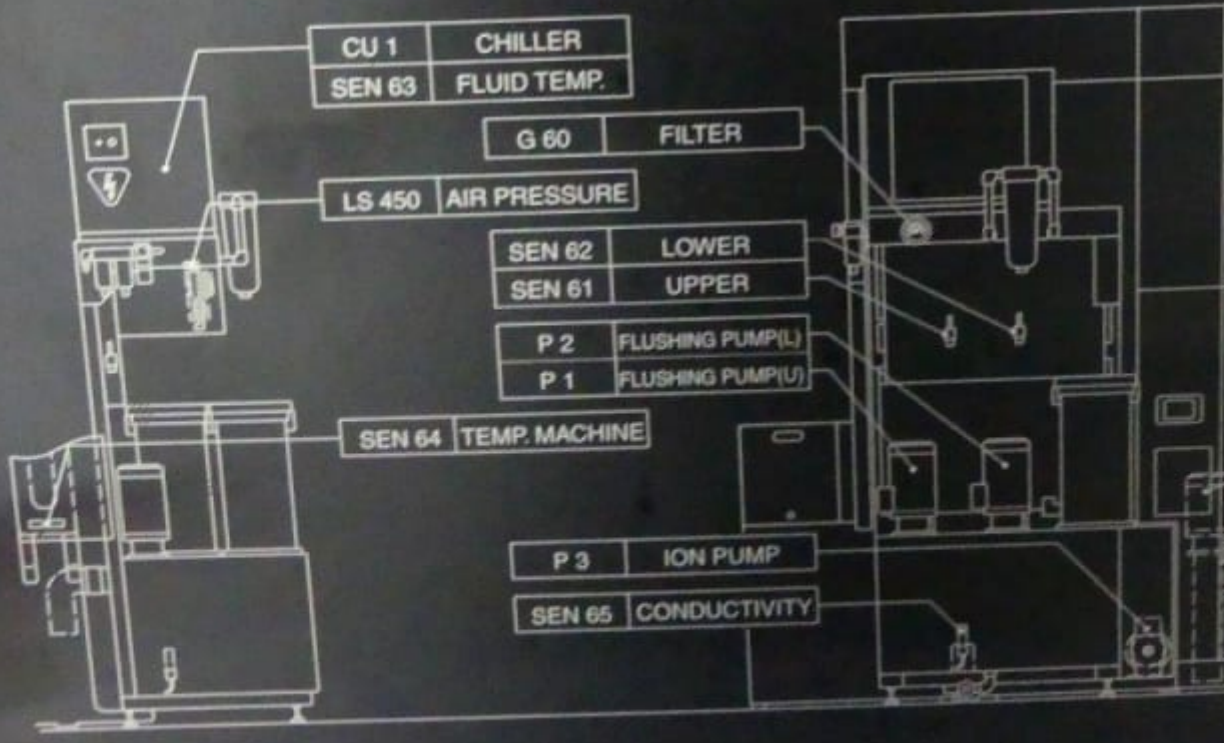
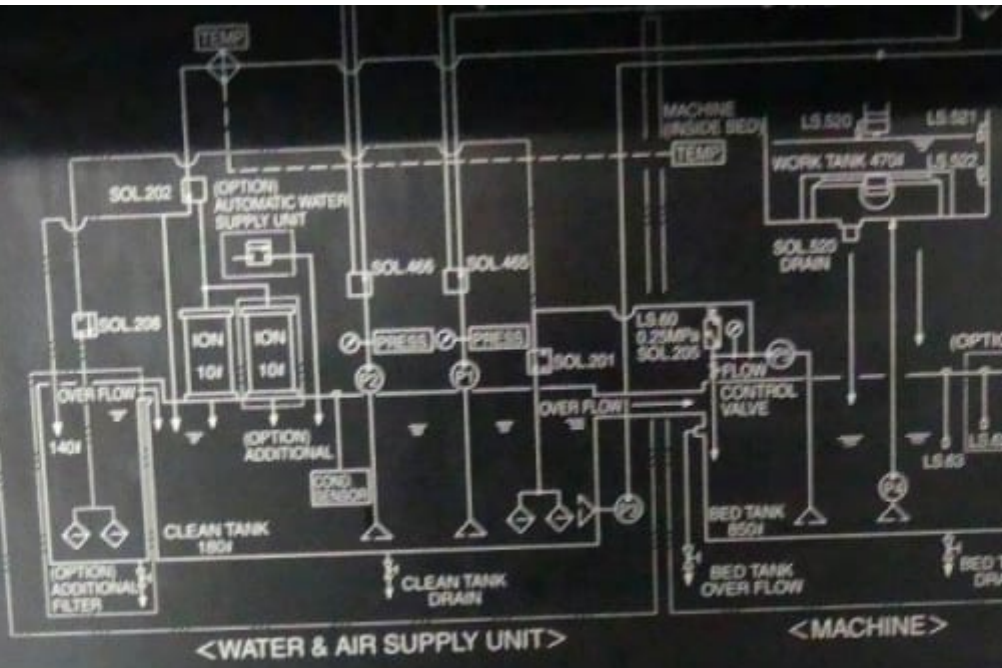
NOTE
BEFORE USING THE "MUTE" CHECK THE
POSITION OF THE "MUTE" SWITCH. POWER
MAY BE APPLIED TO THE "MUTE" AND THE
"MUTE" SWITCH MUST BE IN THE
"MUTE" POSITION.



NOTE

TURN ON THE "GUIDE OPEN" KEY







MAKINO

MA MACHINE SERIAL NO

W6007

LM MACHINE SERIAL NO

80-4164-

TYPE

EU 64

DATE

MADE IN SINGAPORE

UNDER LICENSE FROM MAKINO MILLING M

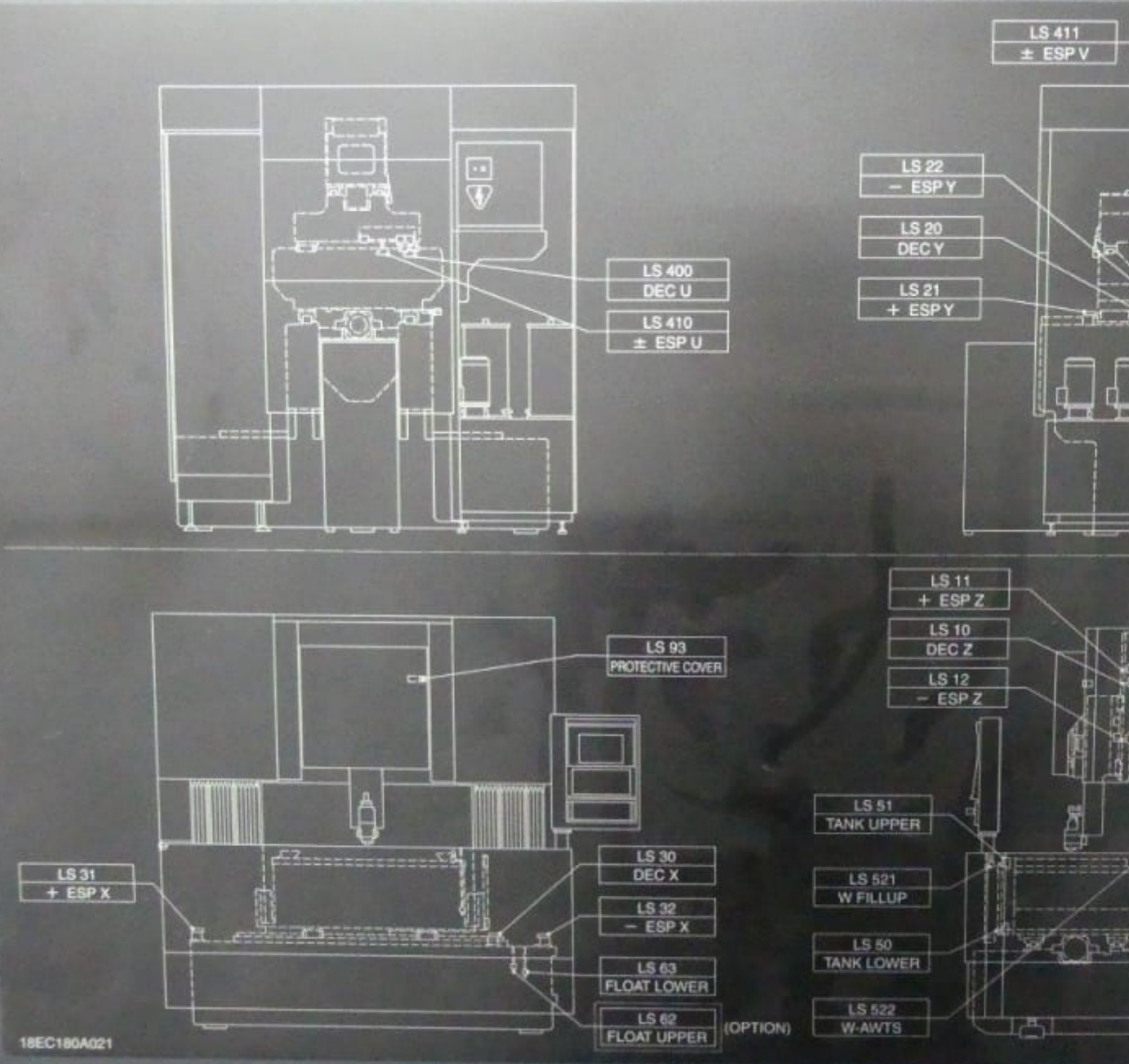
1VS110A705-00

CO LTD

ORION UNIT COOLE

| | | | |
|----------|----------------|------------|------|
| MODEL | RKS-750-CMC-CE | SERIAL No. | 20 |
| CAPACITY | 2.52/2.80kW | SOURCE | 3ph |
| MASS | 45kg | FREQ. | 50/6 |
| REFRIG. | R-407C, 600g | INPUT | 0.67 |
| LIST No. | RB137 | CURRENT | 2.4/ |

ORION MACHINERY CO. LTD.











Video:



Asset-Trade

Assessment and Sale of Used Assets world wide

Am Sonnenhof 16

47800 Krefeld

Germany

Tel.: +49 2151 32500 33

Fax.: +49 2151 65 29 22

Email: info@asset-trade.de

Web.: <https://www.asset-trade.de/en>

Generated on 25.05.2026

© Copyright 2026 - [Asset-Trade](#)

Page