



Image not found or type unknown

Ref. No.:

1219-05120947

## **Overview and Technical Data:**

# **LVD - Easy-Form PPEB 320/45 Hydraulic Press Break**

**[LVD](#)**



Year of Build:  
Nov 2011

## **Description:**

### **Used LVD Easy-form PPEB 320/45 - Hydraulic press brake**

- Working hours: 60601 std
- Strokes: 2231708 pcs
- Last maintenance February 2021
- Last complete overhaul incl. replacement hydraulic oil, all hydraulic hoses and filter elements in January 2020

#### Technical data:

- Working length: 4500 mm
- Pressure force: 3200 kn
- column passage: 3.820 mm
- stroke: 300 mm
- Table width: 200 mm
- Maximum table load: 2.500 kN/m
- Distance table/joints: 570 mm
- Working height: 1.000mm
- Closing speed: 120 mm/s
- Motor: 37 kW
- Pressure: 285 bar
- Oil tank: 400 l

Specifications: EASY-FORM LASER adaptive bending system (EFL) and CNC controlled sheet following system.

---

#### **PPEB SERIES - DESIGNED FOR YOUR NEEDS**

The LVD PPEB-BAUREIQUE PPEB press brakes offer precision bending with a flexible design.

You configure a PPEB to fit your needs - choose your backgauge, extend the distance between the table and ram, integrate a robotic interface, horn pieces or CNC-controlled sheet following systems. The options are numerous. Whether your application is simple or complex, a PPEB is designed to specifically address your production needs, in a press brake that is proven to be highly accurate and reliable.

## **Technical Data:**

### **Technical Data:**

Control:

[CNC](#)

Machine Hours:

60601

## Dimensions and Weight:

Weight:  
25.500 kg

## Buyer Information:

Condition:  
[Very good condition](#)  
Available:  
[Sold](#)  
Sold as:  
[EXW \(Ex Works - Incoterm\)](#)  
VAT:  
[19 %](#)  
Buyers Premium:  
[16 %](#)  
Location:  
Germany

## Images:









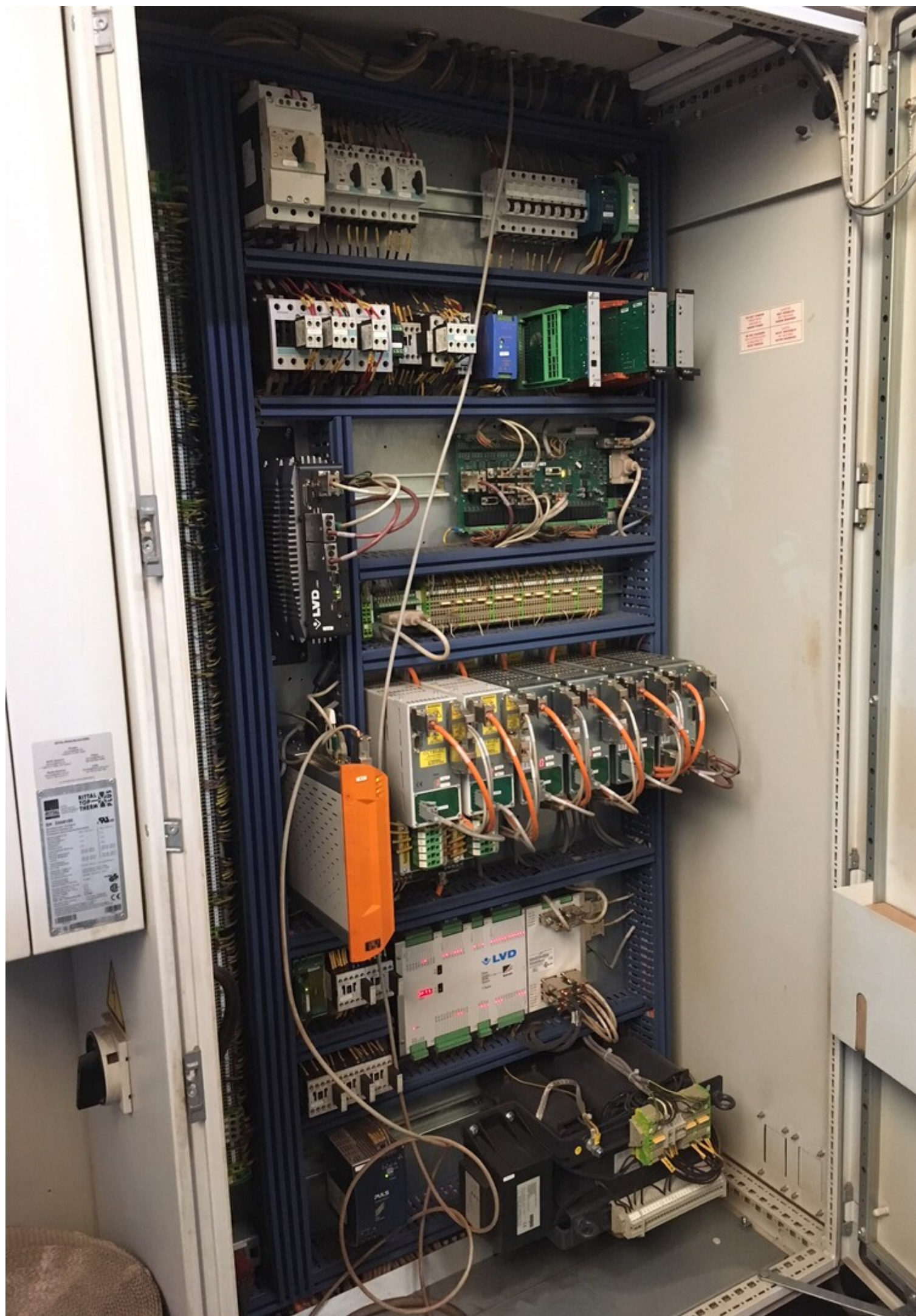












**Video:**



Asset-Trade

Assessment and Sale of Used Assets world wide

Am Sonnenhof 16

47800 Krefeld

Germany

Tel.: +49 2151 32500 33

Fax.: +49 2151 65 29 22

Email: [info@asset-trade.de](mailto:info@asset-trade.de)

Web.: <https://www.asset-trade.de/en>

Ref. No.:  
1219-05120947

## **Overview and Technical Data:**

# **LVD - Easy-Form PPEB 320/45 Hydraulic Press Break**

**LVD**



Year of Build:  
Nov 2011

## Description:

### Used LVD Easy-form PPEB 320/45 - Hydraulic press brake

- Working hours: 60601 std
- Strokes: 2231708 pcs
- Last maintenance February 2021
- Last complete overhaul incl. replacement hydraulic oil, all hydraulic hoses and filter elements in January 2020

#### Technical data:

- Working length: 4500 mm
- Pressure force: 3200 kn
- column passage: 3.820 mm
- stroke: 300 mm
- Table width: 200 mm
- Maximum table load: 2.500 kN/m
- Distance table/joints: 570 mm
- Working height: 1.000mm
- Closing speed: 120 mm/s
- Motor: 37 kW
- Pressure: 285 bar
- Oil tank: 400 l

Specifications: EASY-FORM LASER adaptive bending system (EFL) and CNC controlled sheet following system.

---

#### PPEB SERIES - DESIGNED FOR YOUR NEEDS

The LVD PPEB-BAUREIQUE PPEB press brakes offer precision bending with a flexible design.

You configure a PPEB to fit your needs - choose your backgauge, extend the distance between the table and ram, integrate a robotic interface, horn pieces or CNC-controlled sheet following systems. The options are numerous. Whether your application is simple or complex, a PPEB is designed to specifically address your production needs, in a press brake that is proven to be highly accurate and reliable.

## Technical Data:

## Technical Data:

Control:

[CNC](#)

Machine Hours:

60601



## Dimensions and Weight:

Weight:  
25.500 kg

## Buyer Information:

Condition:  
[Very good condition](#)  
Available:  
[Sold](#)  
Sold as:  
[EXW \(Ex Works - Incoterm\)](#)  
VAT:  
[19 %](#)  
Buyers Premium:  
[16 %](#)  
Location:  
Germany

## Images:









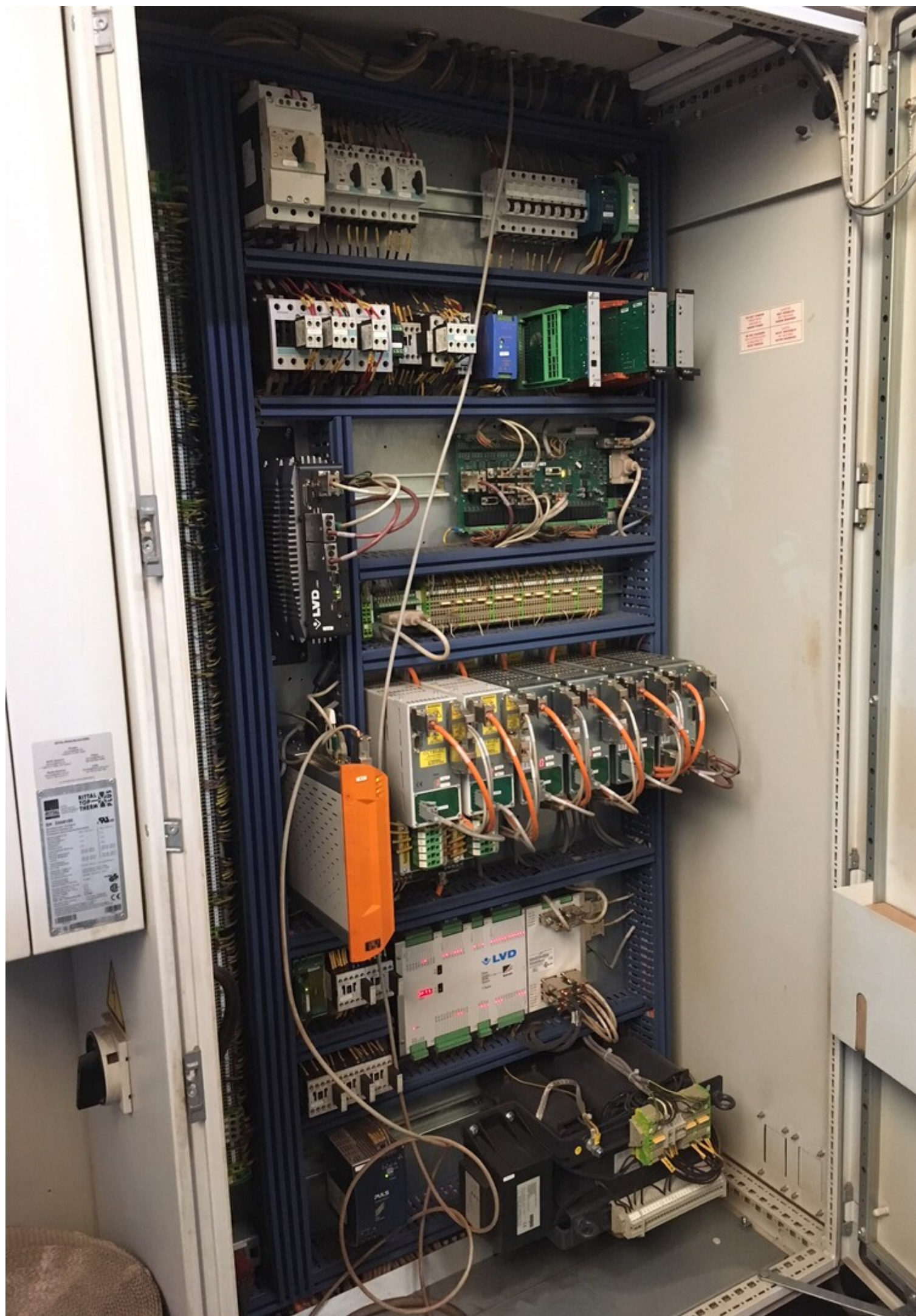












**Video:**



Asset-Trade

Assessment and Sale of Used Assets world wide

Am Sonnenhof 16

47800 Krefeld

Germany

Tel.: +49 2151 32500 33

Fax.: +49 2151 65 29 22

Email: [info@asset-trade.de](mailto:info@asset-trade.de)

Web.: <https://www.asset-trade.de/en>

Generated on 15.12.2025

© Copyright 2025 - [Asset-Trade](#)

Page