

Image not found or type unknown



Ref. No.:  
1205-02031019

## Overview and Technical Data:

### SPINNER - TTC 300 - 52 SMMCY with Barloeder

### SPINNER

SP I

Year of Build:  
Jan 2011

### **Description:**

# Used SPINNER TTC300-52-SMMCY Siemens with Bar Loader

CNC Control Siemens 840 D

Operating Hours : 42454

Technical specifications:

- Swinging diameter max. 400 mm
- Turning diameter max. 200 mm
- Turning length max 400 mm
- Track (X1/ X2 / Zaxis) 180 / 110 / 450 mm
- Longitudinal path (z) 600 mm
- Speed range Main spindle 5,000 rpm
- Rapid traverse (x, z axis) 15/24 m / min
- Spindle 1:
  - 0-5,000 rpm; Power 23 KW, torque 150Nm;
  - C-axis operation
  - Hollow clamping cylinder
  - Bar passage 52mm
- Spindle 2:
  - 0-7,000 rpm; Power 13,8 KW, torque 189Nm;
  - C-axis operation
  - Can be moved to take over spindle 1 with hydraulic hollow clamping cylinder.
- Revolver 1:
  - 12 tool stations for turning, VDI25 radial version
  - Travel X1 = 180mm Z = 450mm
  - 12 stations of the revolver can be driven 0-6000 rpm / 16,5KW / 35Nm, with Y-axis additionally + -40 mm vertically movable for external transverse machining in drilling and milling
- Revolver 2:
  - 12 tool stations for turning, VDI25 radial version
  - Travel X2 = 110mm Z = 450mm
  - 12 stations of the revolver are drivable 0-6000 rpm / 16,5KW / 35Nm,, each individually coupling in working position
- Dimensions (LxWxH) 2500x 1900 x 2165 mm

## Technical Data:

## Technical Data:

Control:

[SINUMERIK 840D](#)

Machine Hours:

42454.00 hrs.

Turning length:

400.00 mm

Turning diameter:

200.00 mm

Spindle Speed:

5000.00 rpm

Tool Holder:

[VDI 25](#)

Driven Tools:

24.00

Tool Capacity:

24 x

Tailstock:

Yes

Bezel:

Yes

## **Dimensions and Weight:**

Height:

2165 mm

Length:

2500 mm

Width:

1900 mm

Weight:

4600 kg

## **Buyer Information:**

Condition:

[Very good condition](#)

Available:

[Sold](#)

Sold as:

[EXW \(Ex Works - Incoterm\)](#)

VAT:

[19 %](#)

Buyers Premium:

[16 %](#)

Location:

Turkey

## **Images:**





SIEMENS

12P0

2  
4  
5  
4

83A0

83A1

83A2

83X1

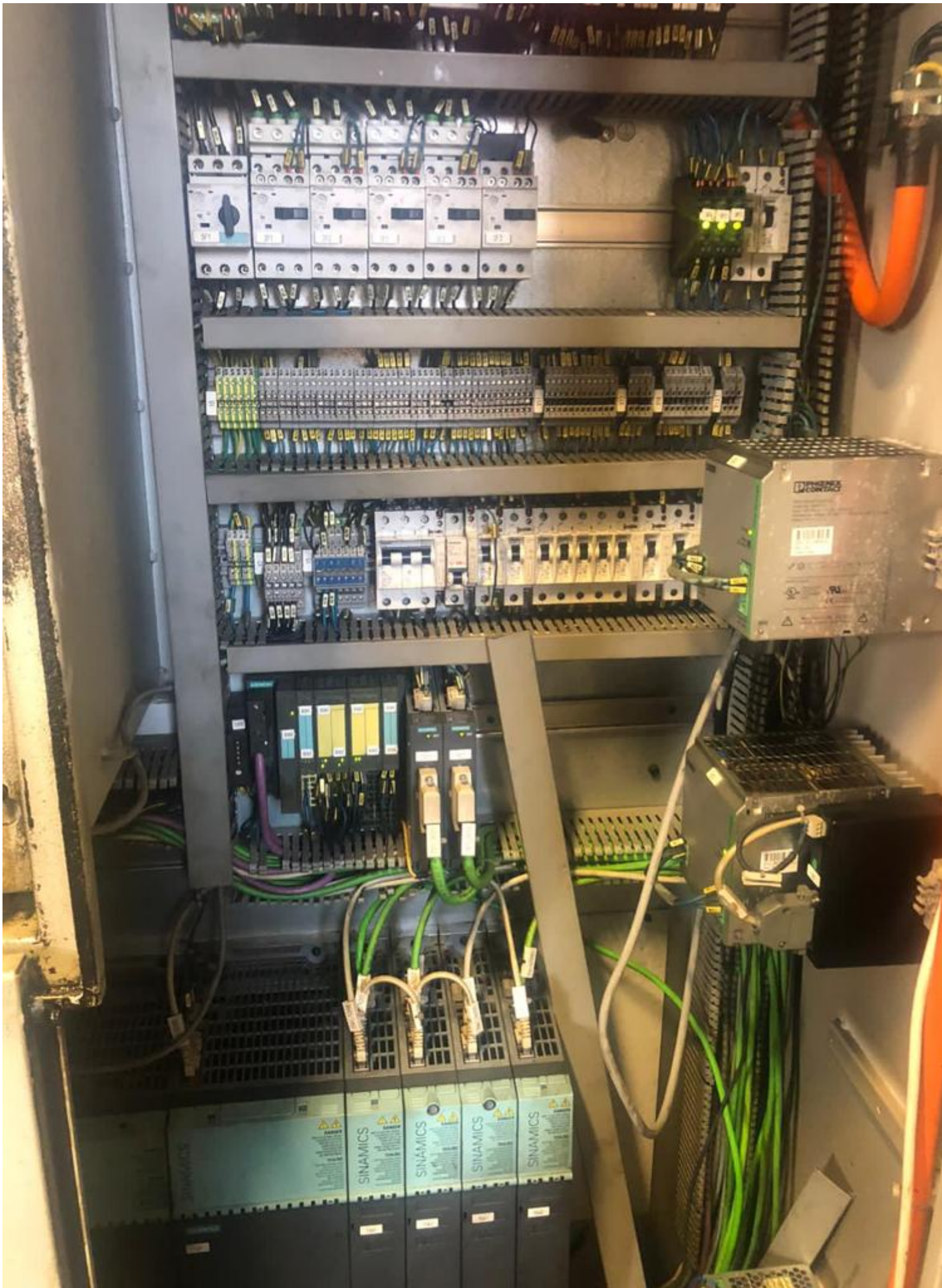
83X2

8303/1  
8303/2  
8303/3  
8303/4  
8303/5  
8303/6  
8303/7  
8303/8

3



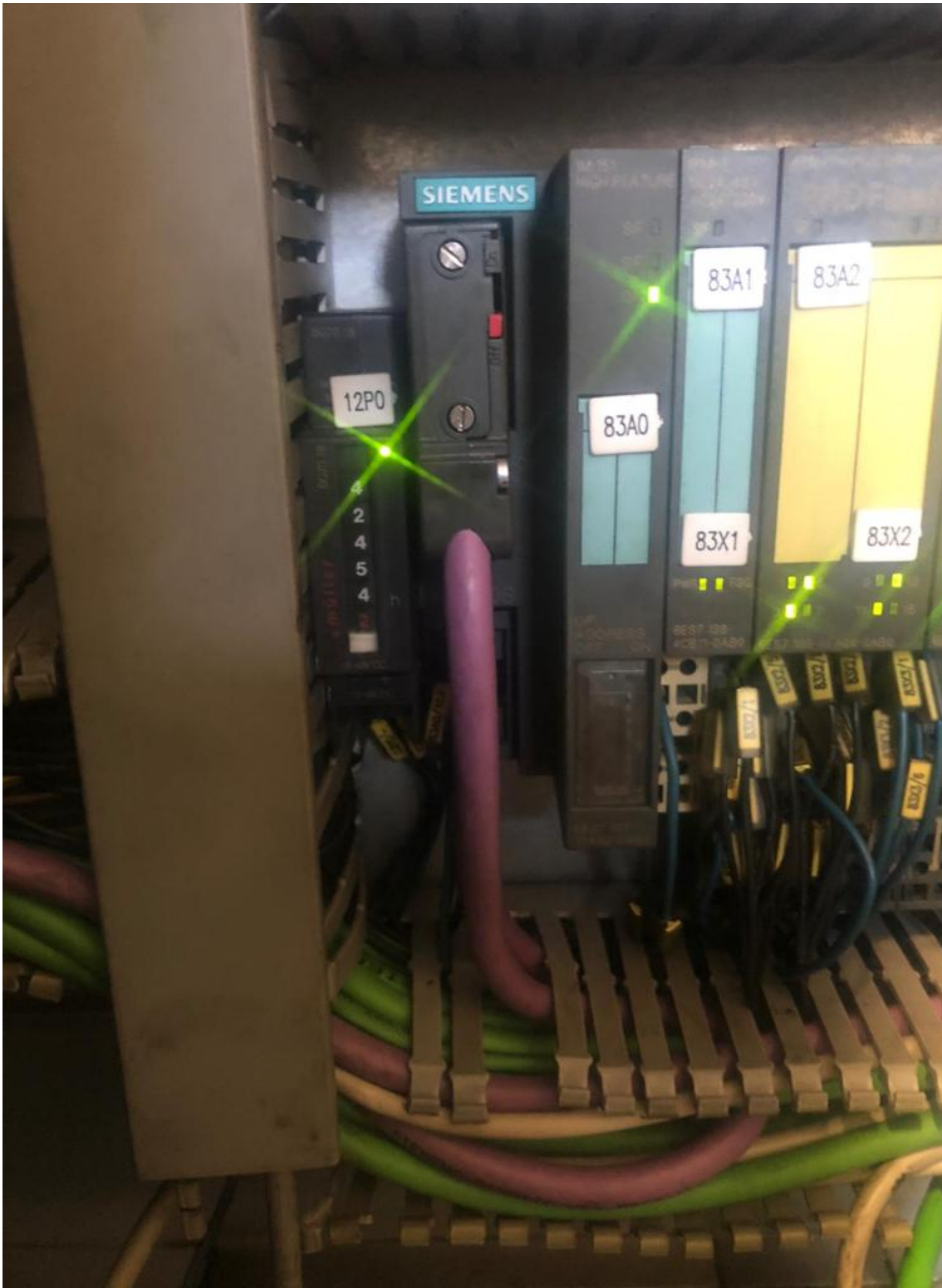
4



5



6



**Video:**





Asset-Trade

Assessment and Sale of Used Assets world wide

Am Sonnenhof 16

47800 Krefeld

Germany

Tel.: +49 2151 32500 33

Fax.: +49 2151 65 29 22

Email: [info@asset-trade.de](mailto:info@asset-trade.de)

Web.: <https://www.asset-trade.de/en>

Ref. No.:  
1205-02031019

**Overview and Technical Data:**

**[SPINNER - TTC 300 - 52 SMMCY with Barloader](#)**

**SPINNER**

**SPIN**

Year of Build:  
Jan 2011

**Description:**

**Used SPINNER TTC300-52-SMMCY Siemens with Bar Loader**

CNC Control Siemens 840 D

Operating Hours : 42454

Technical specifications:

- Swinging diameter max. 400 mm
- Turning diameter max. 200 mm
- Turning length max 400 mm
- Track (X1/ X2 / Zaxis) 180 / 110 / 450 mm

- Longitudinal path (z) 600 mm
- Speed ??range Main spindle 5,000 rpm
- Rapid traverse (x, z axis) 15/24 m / min
- Spindle 1:
  - 0-5,000 rpm; Power 23 KW, torque 150Nm;
  - C-axis operation
  - Hollow clamping cylinder
  - Bar passage 52mm
- Spindle 2:
  - 0-7,000 rpm; Power 13,8 KW, torque 189Nm;
  - C-axis operation
  - Can be moved to take over spindle 1 with hydraulic hollow clamping cylinder.
- Revolver 1:
  - 12 tool stations for turning, VDI25 radial version
  - Travel X1 = 180mm Z = 450mm
  - 12 stations of the revolver can be driven 0-6000 rpm / 16,5KW / 35Nm, with Y-axis additionally + -40 mm vertically movable for external transverse machining in drilling and milling
- Revolver 2:
  - 12 tool stations for turning, VDI25 radial version
  - Travel X2 = 110mm Z = 450mm
  - 12 stations of the revolver are drivable 0-6000 rpm / 16,5KW / 35Nm,, each individually coupling in working position
- Dimentions (LxWxH) 2500x 1900 x 2165 mm

## Technical Data:

## Technical Data:

Control:

[SINUMERIK 840D](#)

Machine Hours:

42454.00 hrs.

Turning lenght:

400.00 mm

Turning diameter:

200.00 mm

Spindle Speed:

5000.00 rpm

Tool Holder:

[VDI 25](#)

Driven Tools:

24.00

Tool Capacity:

24 x

Tailstock:

Yes

Bezel:

Yes

## Dimensions and Weight:

Height:

2165 mm

Length:

2500 mm

Width:

1900 mm

Weight:

4600 kg

## **Buyer Information:**

Condition:

[Very good condition](#)

Available:

[Sold](#)

Sold as:

[EXW \(Ex Works - Incoterm\)](#)

VAT:

[19 %](#)

Buyers Premium:

[16 %](#)

Location:

Turkey

## **Images:**





SIEMENS

12P0

2  
4  
5  
4

83A0

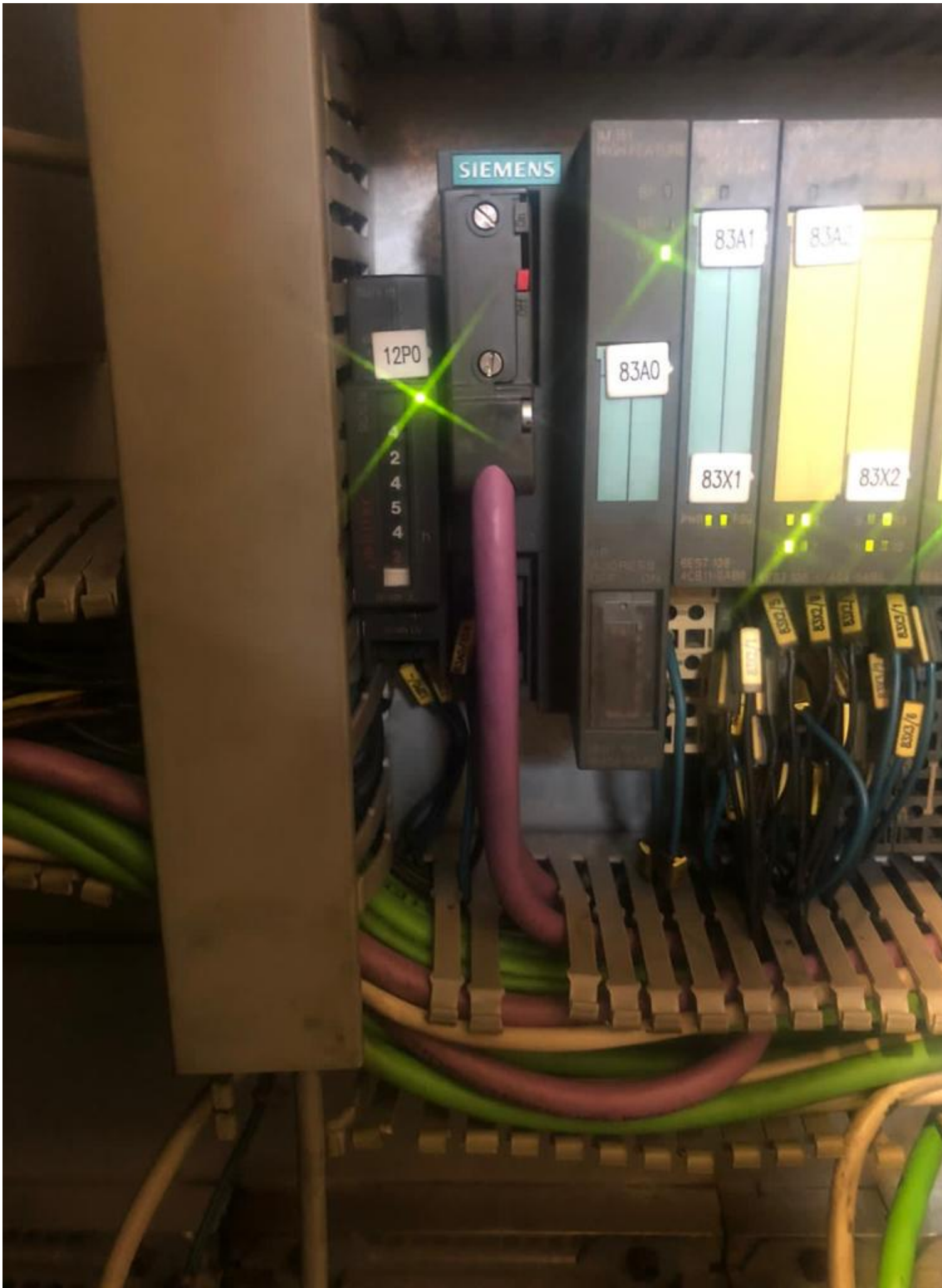
83A1

83A2

83X1

83X2

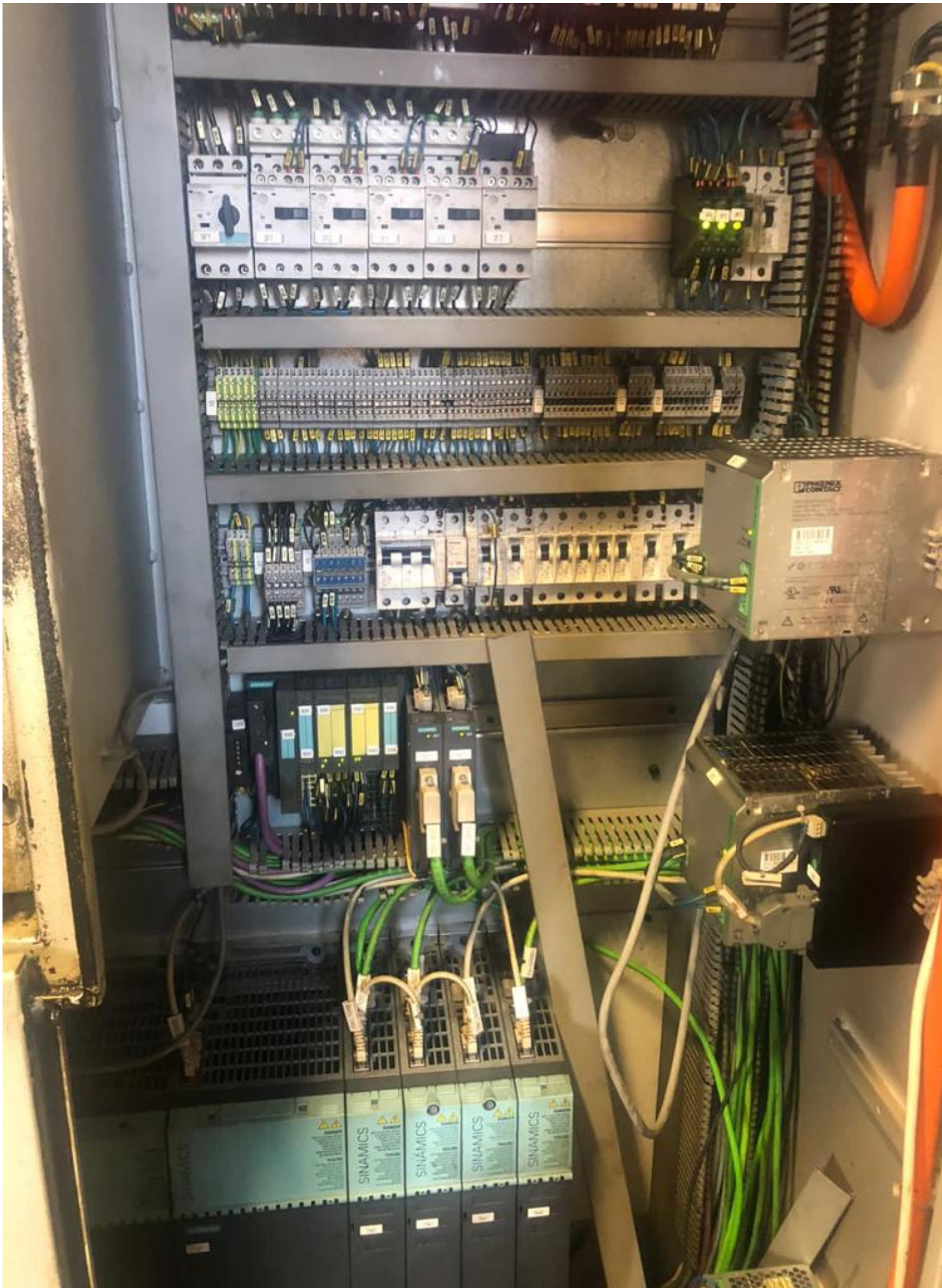
8303/8  
8302/8  
T003  
8303/8  
8303/8  
8303/8  
8303/8



3



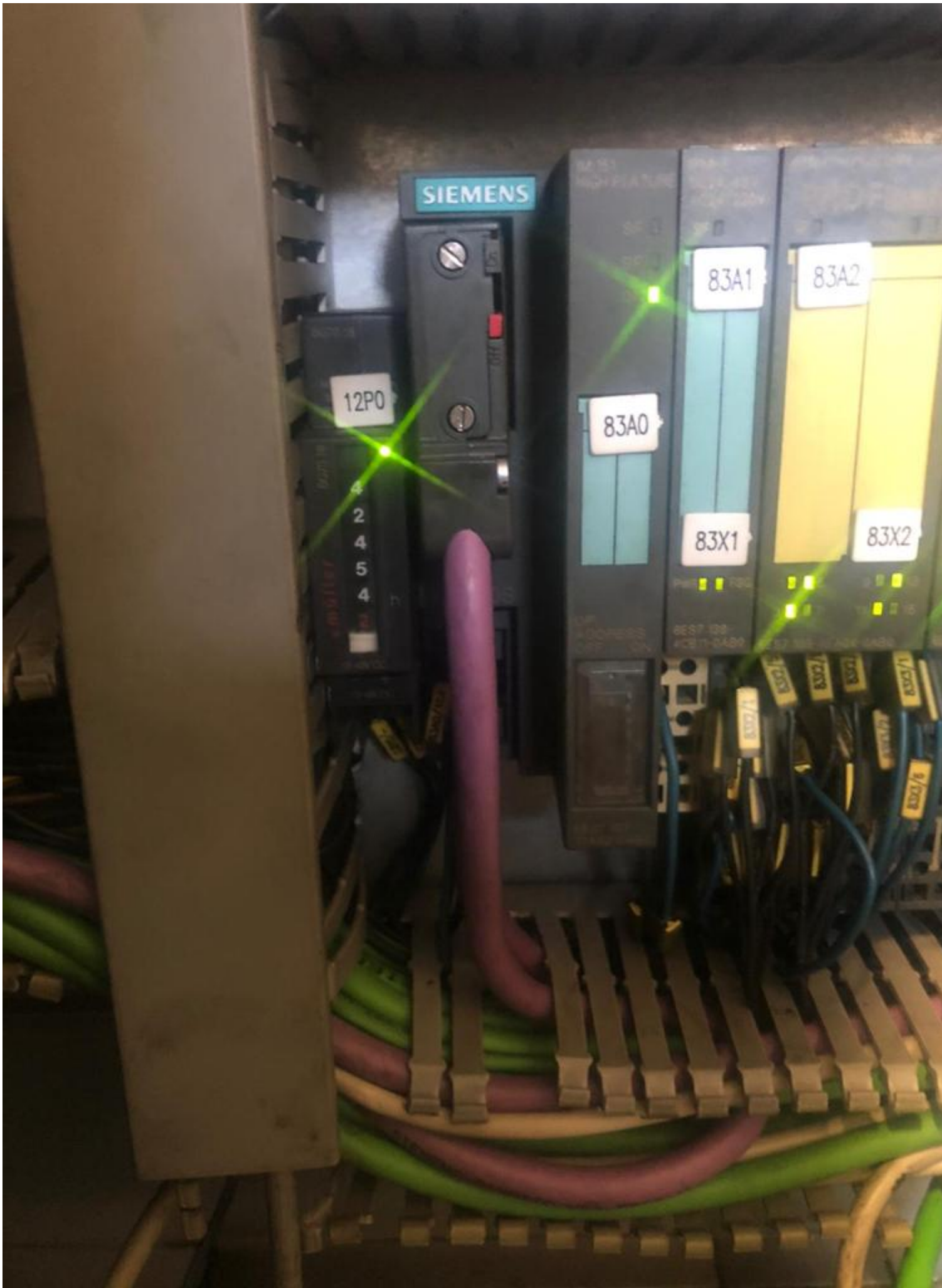
4



5



6



**Video:**





Asset-Trade

Assessment and Sale of Used Assets world wide

Am Sonnenhof 16

47800 Krefeld

Germany

Tel.: +49 2151 32500 33

Fax.: +49 2151 65 29 22

Email: [info@asset-trade.de](mailto:info@asset-trade.de)

Web.: <https://www.asset-trade.de/en>

Generated on 01.05.2026

© Copyright 2026 - [Asset-Trade](#)

Page