

Image not found or type unknown



Ref. No.:

1237-0913011545

## Overview and Technical Data:

# WT Werkzeugmaschinen VZL-863 -Vertical Machining Center

## WT Werkzeugmaschinen



Year of Build:

Jan 2014

## Description:

### Used WT VZL 863 3x Axis vertical machine center for sale

CNC controls Heidenhain iTNC 530 HSCI

Operating hours: 18,435h / Spindel hours: 4.077h

Technical data:

- Travels:
- X-axis: 860 mm
- Y-axis: 630 mm
- Z-axis: 650 mm
- feed speed: 12.000mm/min
- table clamping surface 860x600mm
- tool magazine: 30 tools
- Speed: GTW spindle with 15.000min<sup>-1</sup> and BigPlus
- Drive power: AC 30 KW
- Spindle mounting: SK40
- Linear roller guide in all axes
- Coolant cooling system
- Handwheel HR 410
- Voltage: 380V
- Mains frequency: 510Hz
- CE Conform

## **Technical Data:**

## **Technical Data:**

Control:

[TNC 530](#)

Machine Hours:

18.435 hrs.

Spindle Hours:

4.077 hrs.

Spindle Speed:

15.000 rpm

Tool Holder:

[SK40](#)

Tool Capacity:

30 x

## **Travels:**

X-Axis:

860 mm

Y-Axis:

630mm

Z-Axis:

650 mm

## **Dimensions and Weight:**

Height:

2.850 mm

Width:

2.650 mm

Length:

3.200 mm

Weight:

6.700 kg

## **Buyer Information:**

Condition:

[Very good condition](#)

Availability:

[Sold](#)

Sold as:

[EXW \(Ex Works - Incoterm\)](#)

VAT:

[19 %](#)

Buyers Premium:

[16 %](#)

Location:  
Germany

**Images:**



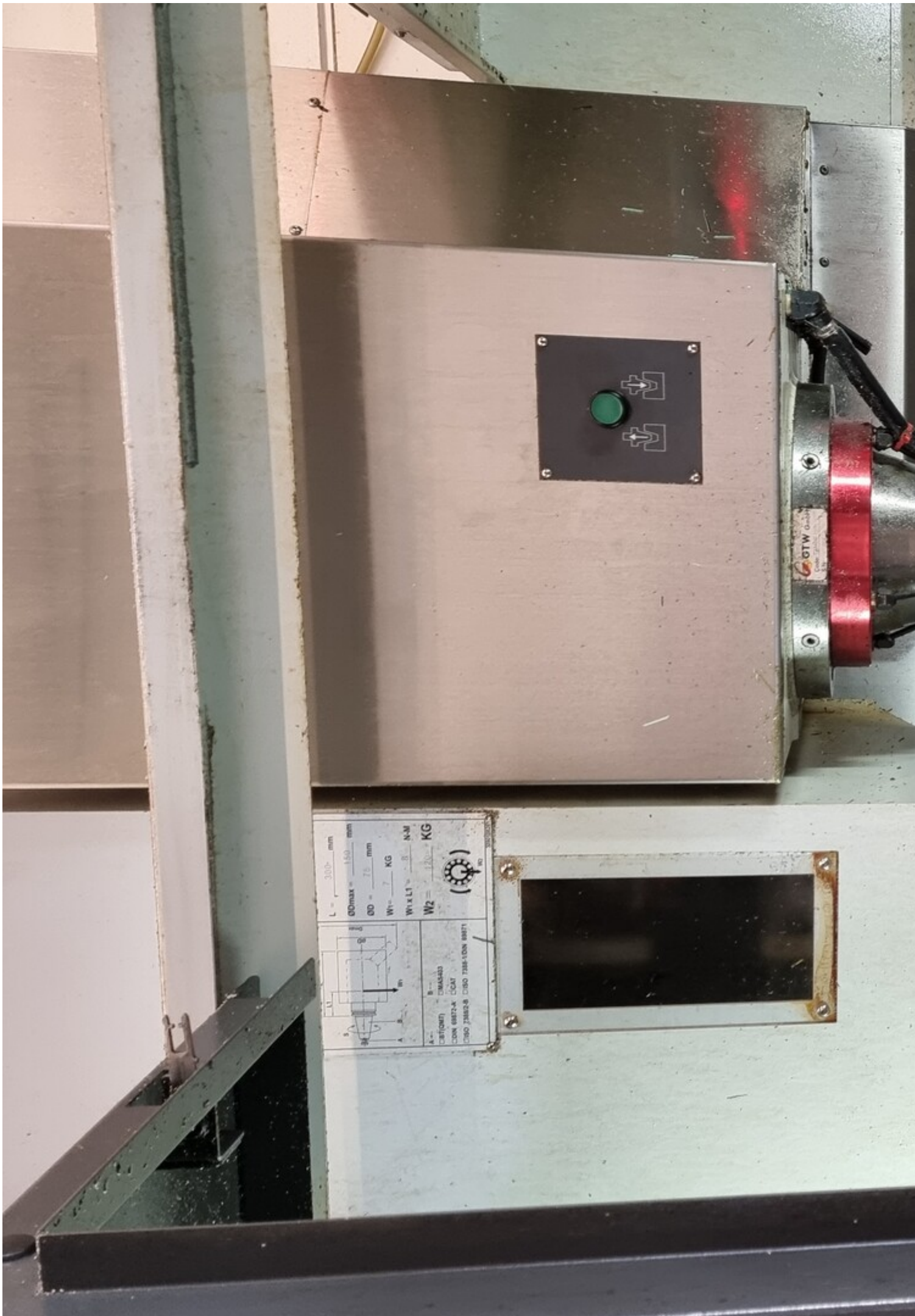




863







L = 300 mm  
ODmax = 150 mm  
OD = 76 mm  
W1 = 7 KG  
W1 x L1 = 8 N-M  
W2 = 120 KG

(G)

A = CARTRIDGE  
B = 2MA3X33  
C = ON 1817-A COAT  
D = 2MA2.8 COBO 738-150N 8817



HEIDENHAIN

010 Arbeitsraum offen |

Programm-  
Einspeichern

IS1  
+X -117.325  
+Y +170.799  
+Z +442.423

Übersicht | PGM | PRL | LBL | CYC | M | POS |  
RE5TH BX +231.205  
BY +0.000  
BZ +2.501  
T : 1050 50-LIMIT  
L +140.2150 R +25.0000  
DL-TAB DR-TAB  
DL-PGM DR-PGM  
M134

S1 46.852

PGM CALL F 0 Z 5 2000 M5 / 9

100% S-OVR P1.10 -T2  
150% F-OVR LIMIT 2 09:03

OFF

SCHRITT  
M035  
EIN

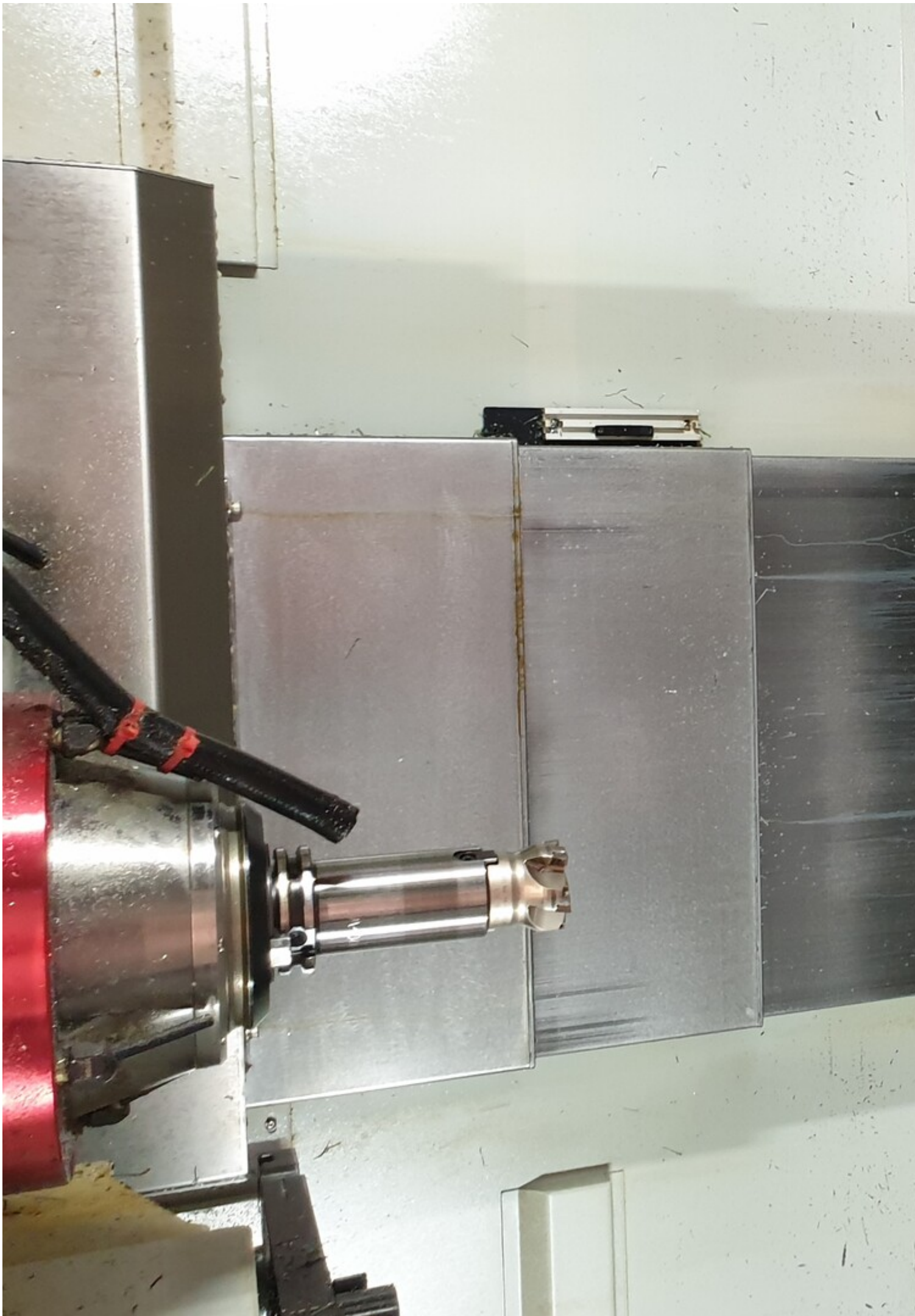
BEZUGSP.  
SETZEN

Navigation icons: Home (H), Print, Heidenhain logo (H), Spindle (S), Tool (T), Stop (S100%), Start (S05), Feed (F100%), and Eject (EIN).

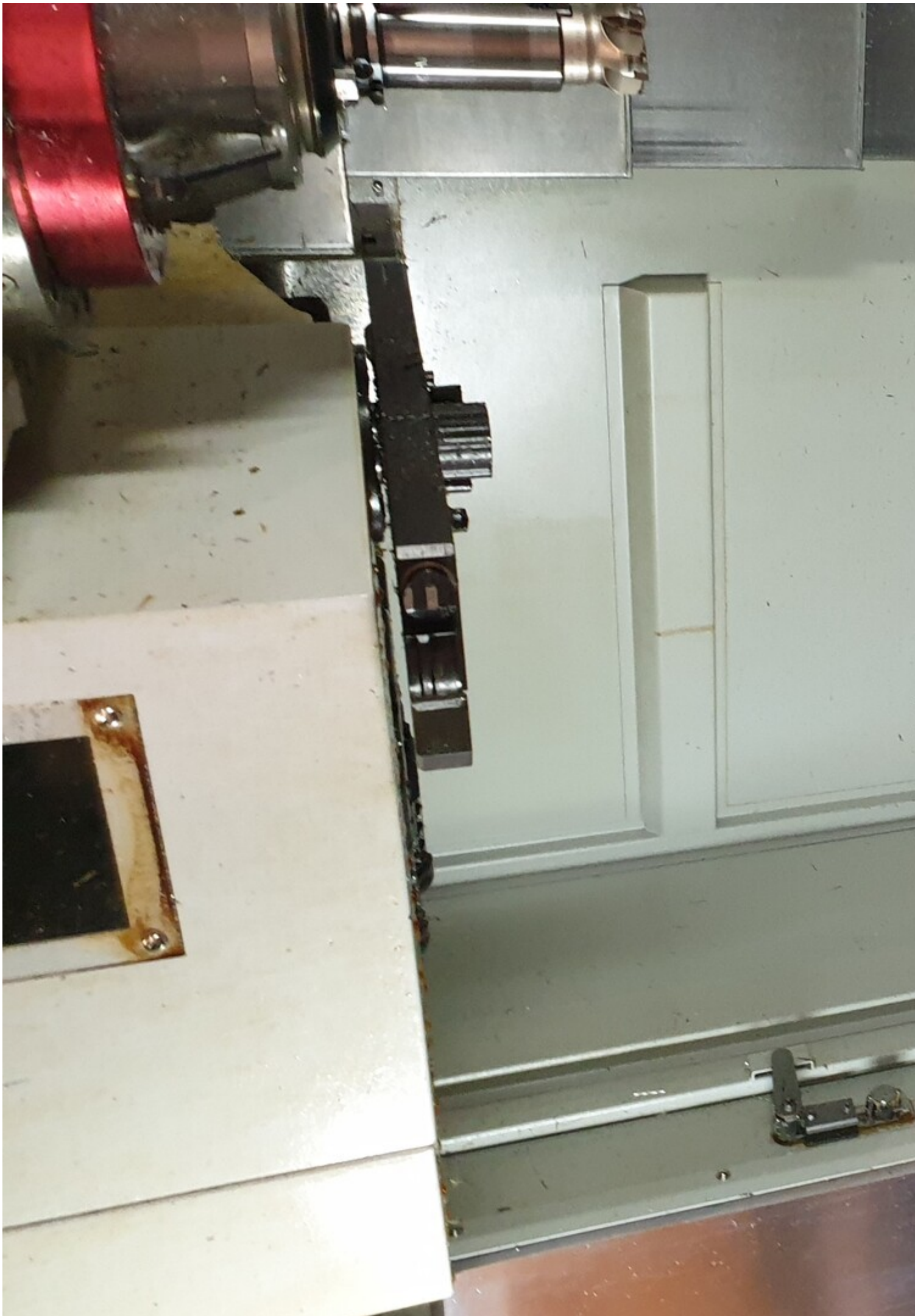








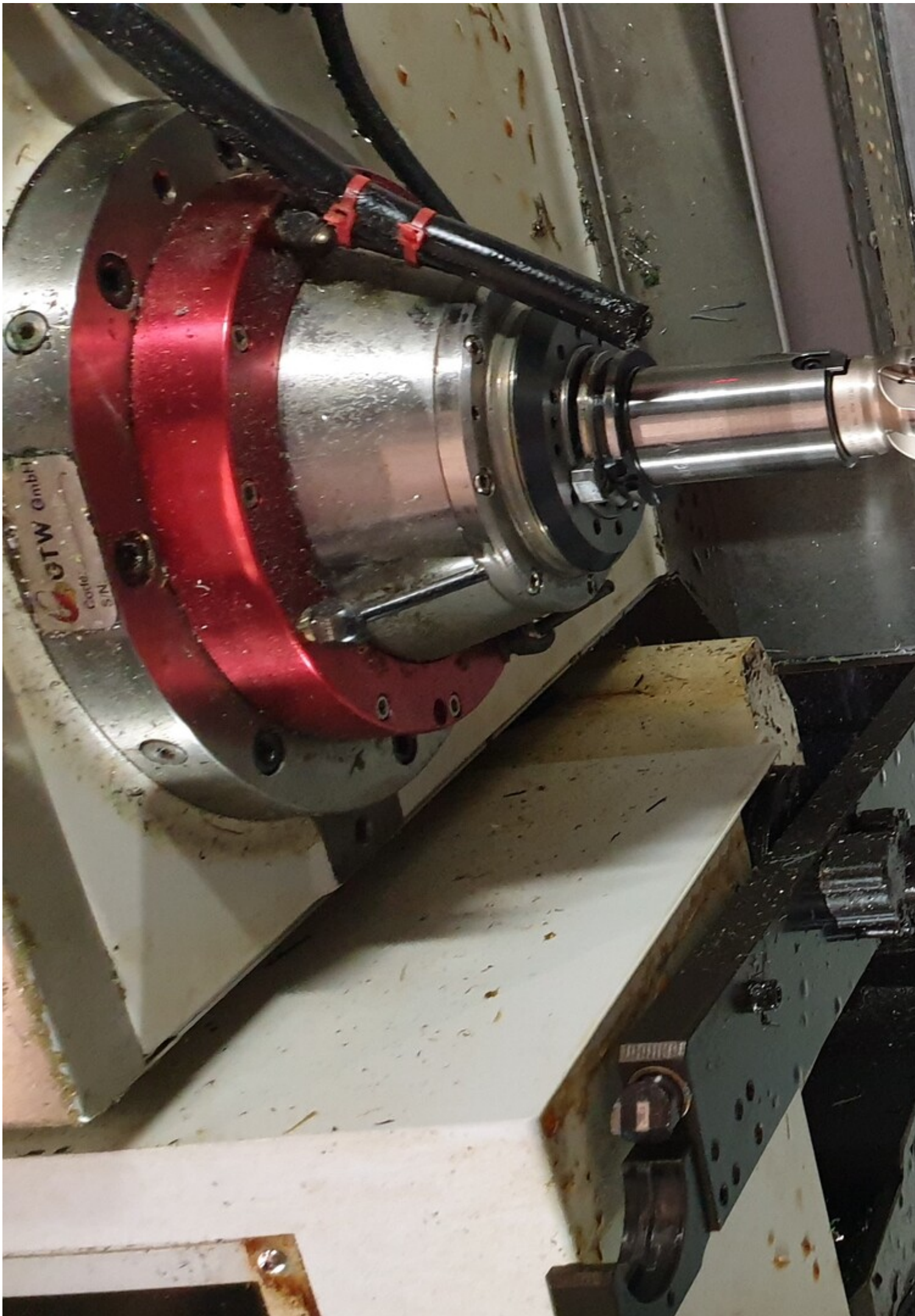


















# BEARBEITUNGSZENTRUM



WT Werkzeugmaschinen GmbH

WT Werkzeugmaschinen GmbH  
D-73037 Göppingen

TYPE  
TYPE

VZL-863

BAUJAHR  
YEAR

2014

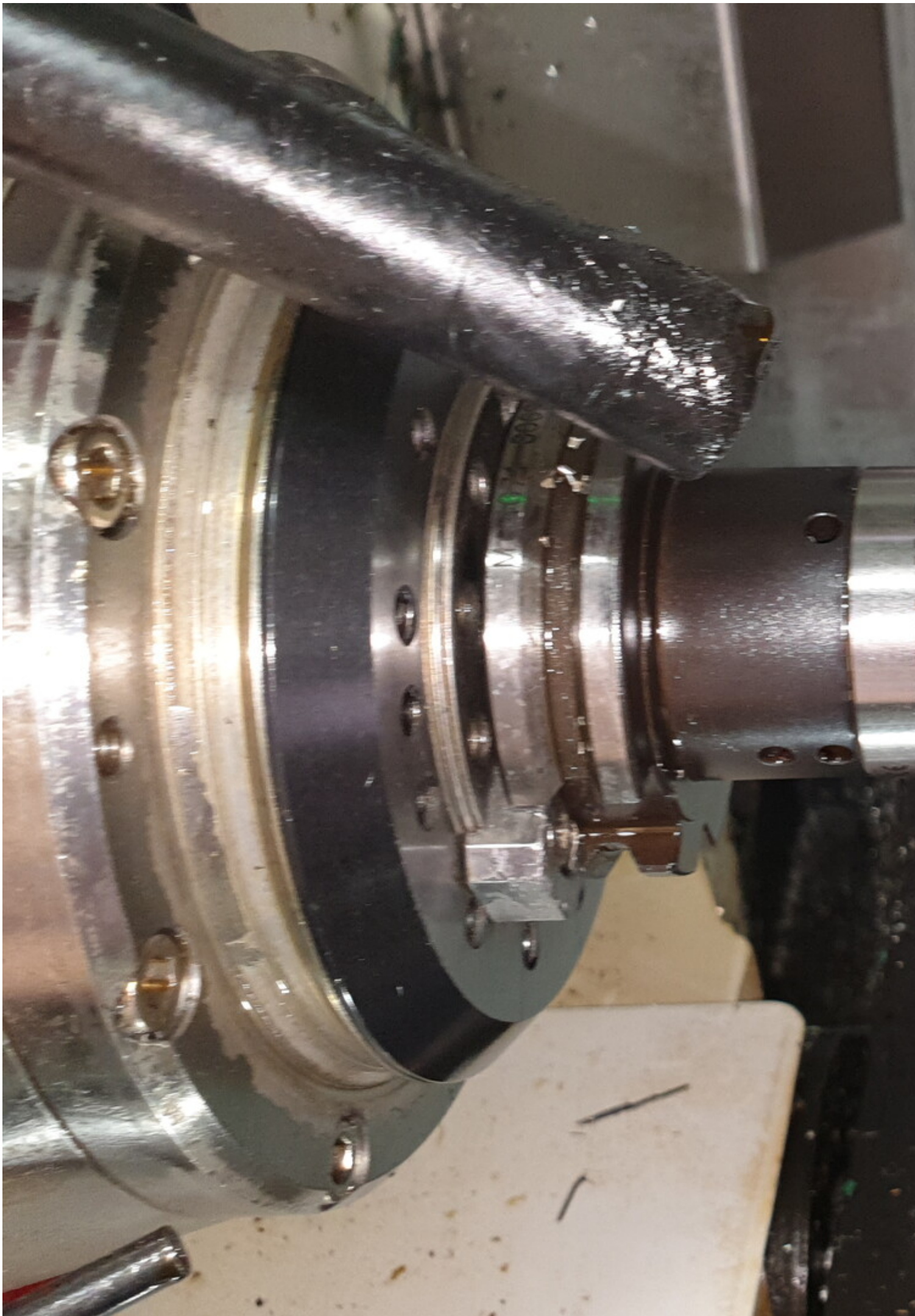
MASCH.-NR.  
MACHINE-NO.

VZL-1007-44-F

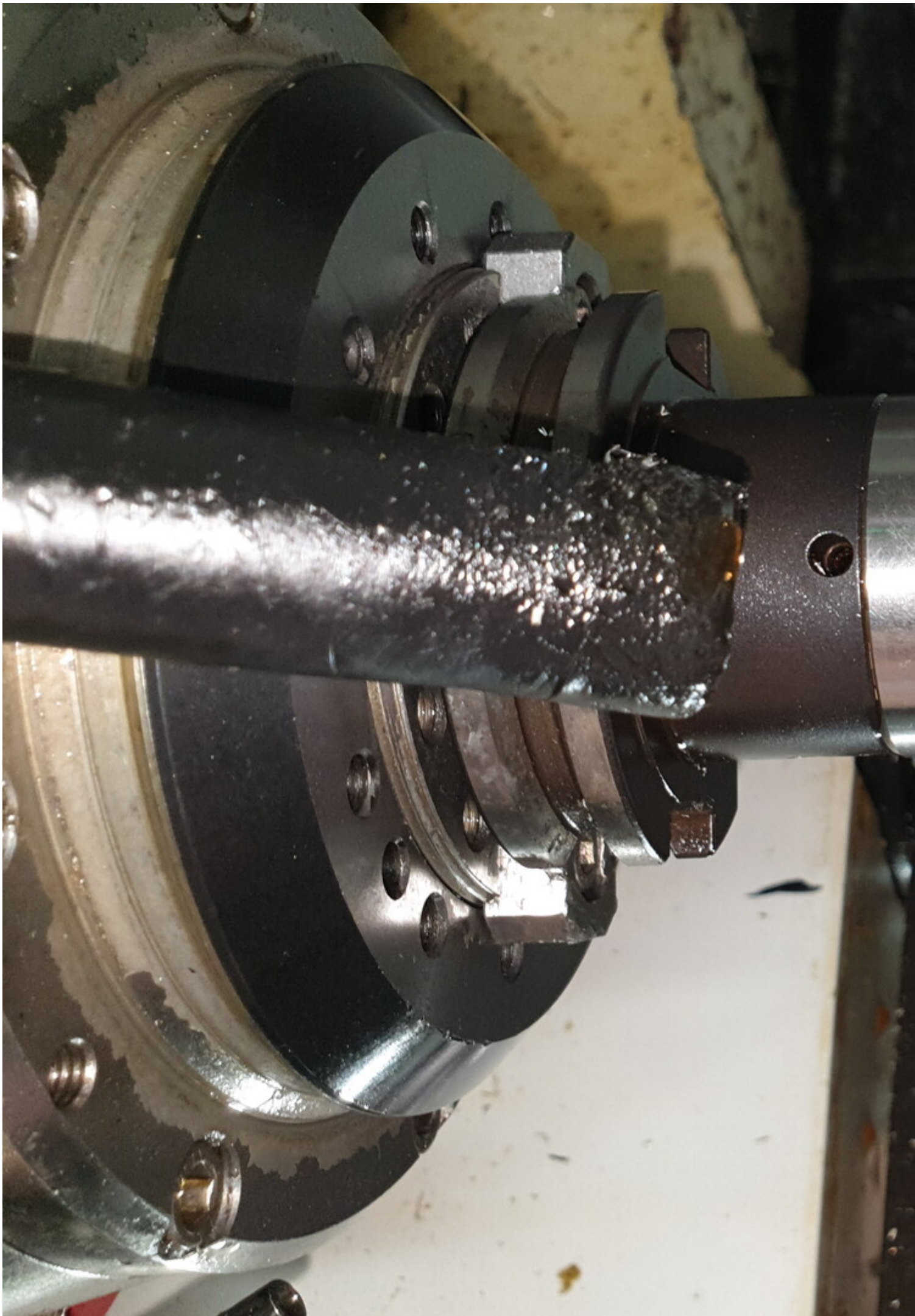




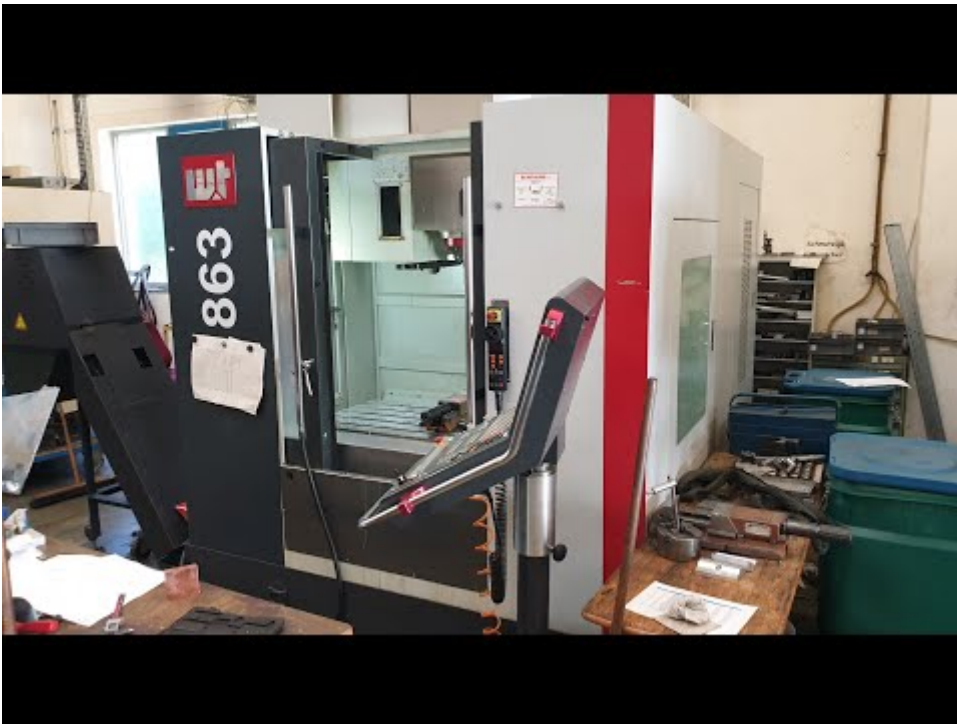








**Video:**



Asset-Trade

Assessment and Sale of Used Assets world wide

Am Sonnenhof 16

47800 Krefeld

Germany

Tel.: +49 2151 32500 33

Fax.: +49 2151 65 29 22

Email: [info@asset-trade.de](mailto:info@asset-trade.de)

Web.: <https://www.asset-trade.de/en>

Ref. No.:  
1237-0913011545

## Overview and Technical Data:

# WT Werkzeugmaschinen VZL-863 -Vertical Machining Center

## WT Werkzeugmaschinen



Year of Build:  
Jan 2014

## Description:

### Used WT VZL 863 3x Axis vertical machine center for sale

CNC controls Heidenhain iTNC 530 HSCI

Operating hours: 18,435h / Spindel hours: 4.077h

Technical data:

- Travels:
- X-axis: 860 mm
- Y-axis: 630 mm
- Z-axis: 650 mm
- feed speed: 12.000mm/min
- table clamping surface 860x600mm

- tool magazine: 30 tools
- Speed: GTW spindle with 15.000min-1 and BigPlus
- Drive power: AC 30 KW
- Spindle mounting: SK40
- Linear roller guide in all axes
- Coolant cooling system
- Handwheel HR 410
- Voltage: 380V
- Mains frequency: 510Hz
- CE Conform

## **Technical Data:**

## **Technical Data:**

Control:

[TNC 530](#)

Machine Hours:

18.435 hrs.

Spindle Hours:

4.077 hrs.

Spindle Speed:

15.000 rpm

Tool Holder:

[SK40](#)

Tool Capacity:

30 x

## **Travels:**

X-Axis:

860 mm

Y-Axis:

630mm

Z-Axis:

650 mm

## **Dimensions and Weight:**

Height:

2.850 mm

Width:

2.650 mm

Length:

3.200 mm

Weight:

6.700 kg

## **Buyer Information:**

Condition:

[Very good condition](#)

Availability:

[Sold](#)

Sold as:

[EXW \(Ex Works - Incoterm\)](#)

VAT:

[19 %](#)

Buyers Premium:

[16 %](#)

Location:

Germany

## **Images:**







863







GOTW

Technical specification plate with a gear icon and various parameters.

L = 300 mm	ODmax = 150 mm
OD = 76 mm	W1 = 7 KG
W1 x L1 = 8 N-M	W2 = 120 KG

Diagram of a gear mechanism with labels A, B, C, D, E, F, G, H, I, J, K, L, M, N, O, P, Q, R, S, T, U, V, W, X, Y, Z.

Technical specifications:  
A = 1000000  
B = 1000000  
C = 1000000  
D = 1000000  
E = 1000000  
F = 1000000  
G = 1000000  
H = 1000000  
I = 1000000  
J = 1000000  
K = 1000000  
L = 1000000  
M = 1000000  
N = 1000000  
O = 1000000  
P = 1000000  
Q = 1000000  
R = 1000000  
S = 1000000  
T = 1000000  
U = 1000000  
V = 1000000  
W = 1000000  
X = 1000000  
Y = 1000000  
Z = 1000000



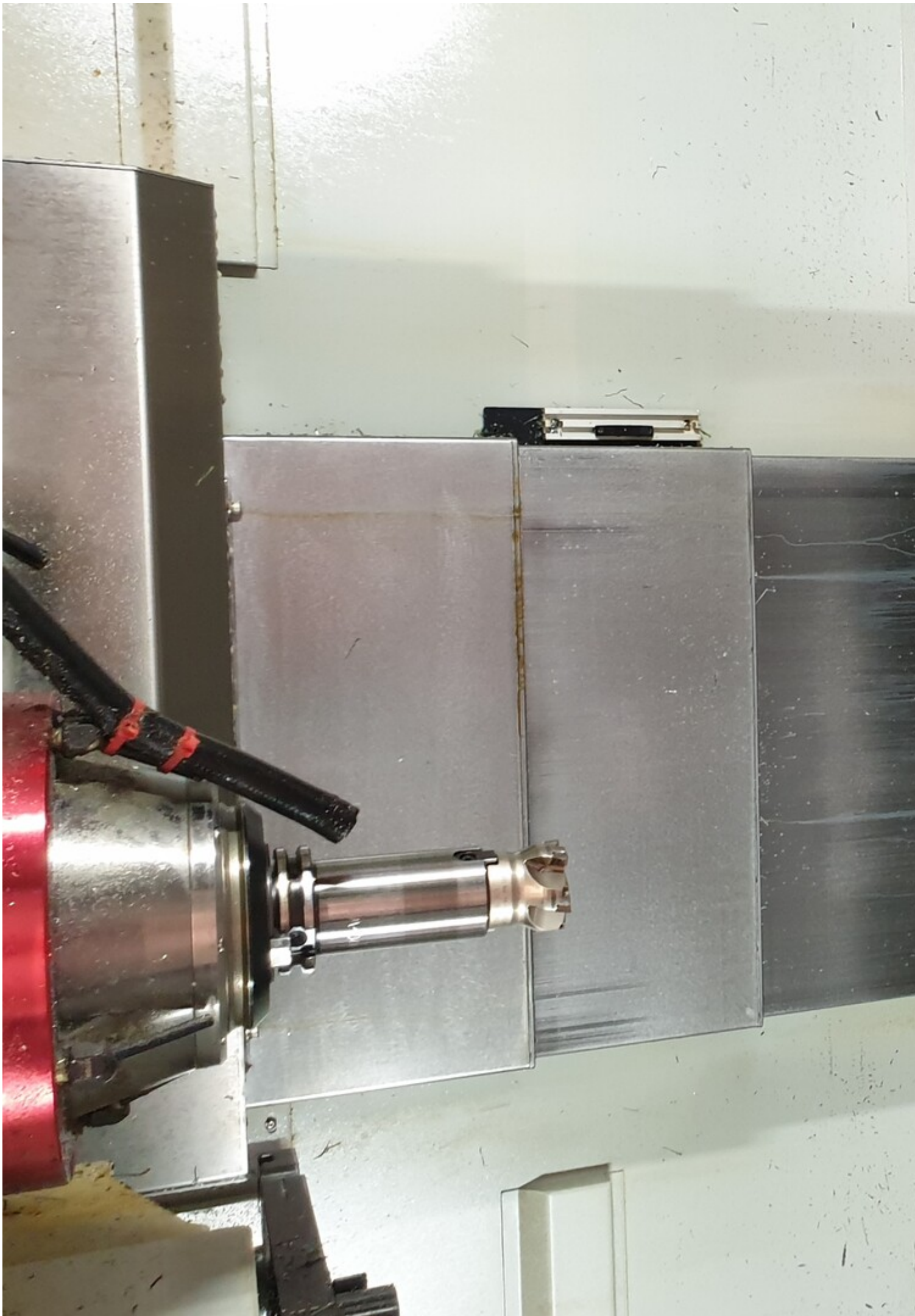




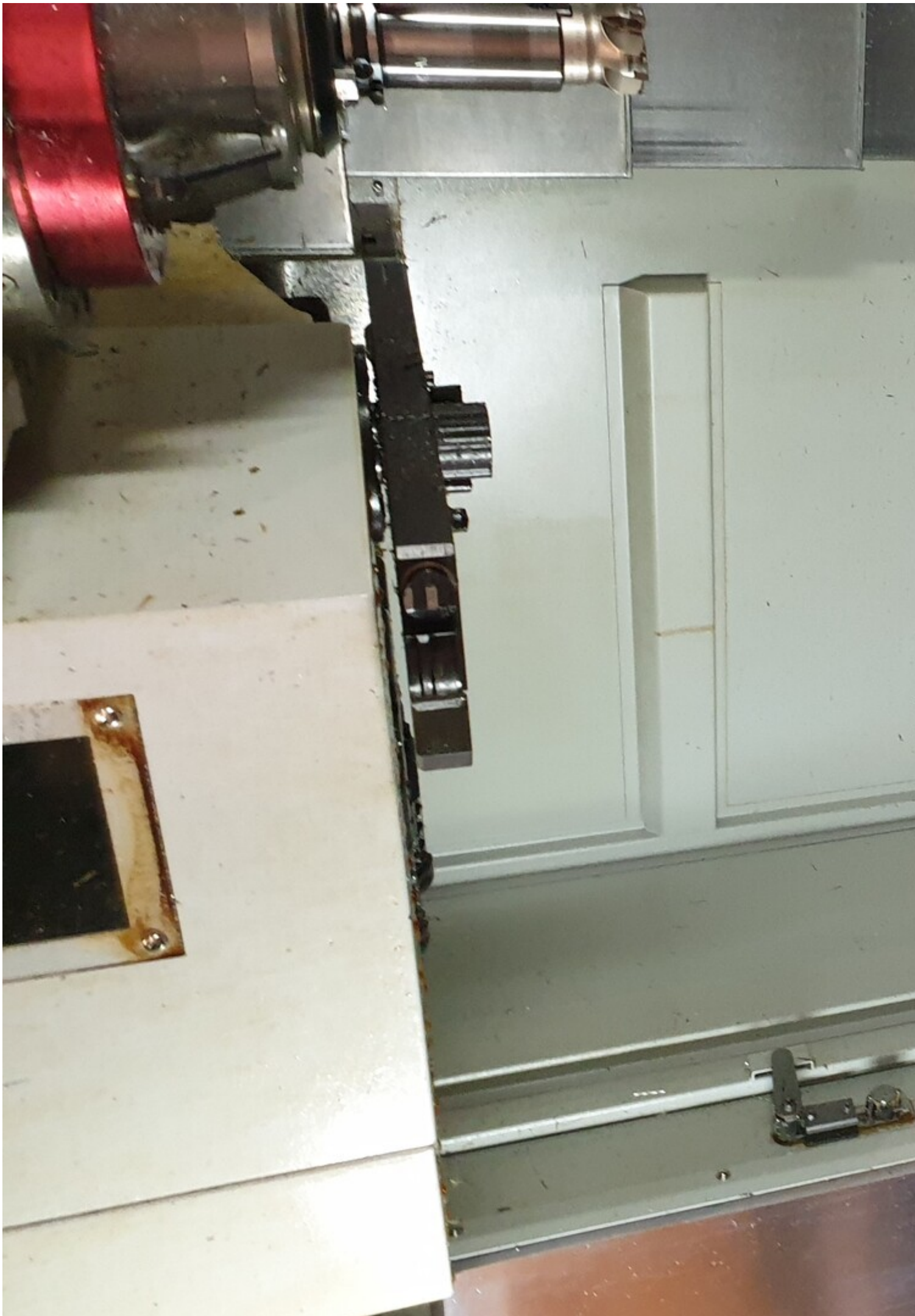








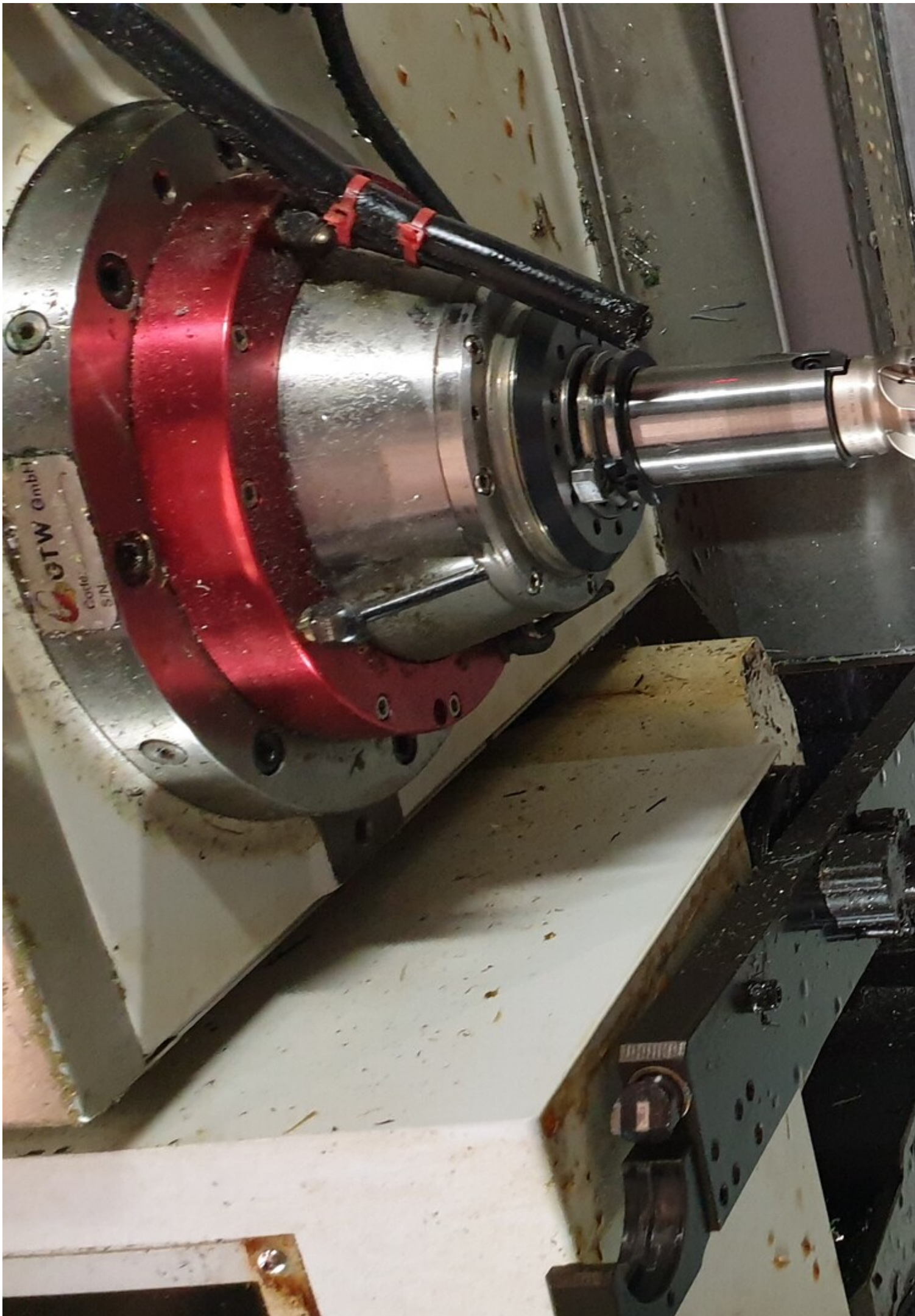


















# BEARBEITUNGSZENTRUM



WT Werkzeugmaschinen GmbH

WT Werkzeugmaschinen GmbH  
D-73037 Göppingen

TYPE  
TYPE

VZL-863

BAUJAHR  
YEAR

2014

MASCH.-NR.  
MACHINE-NO.

VZL-1007-44-F

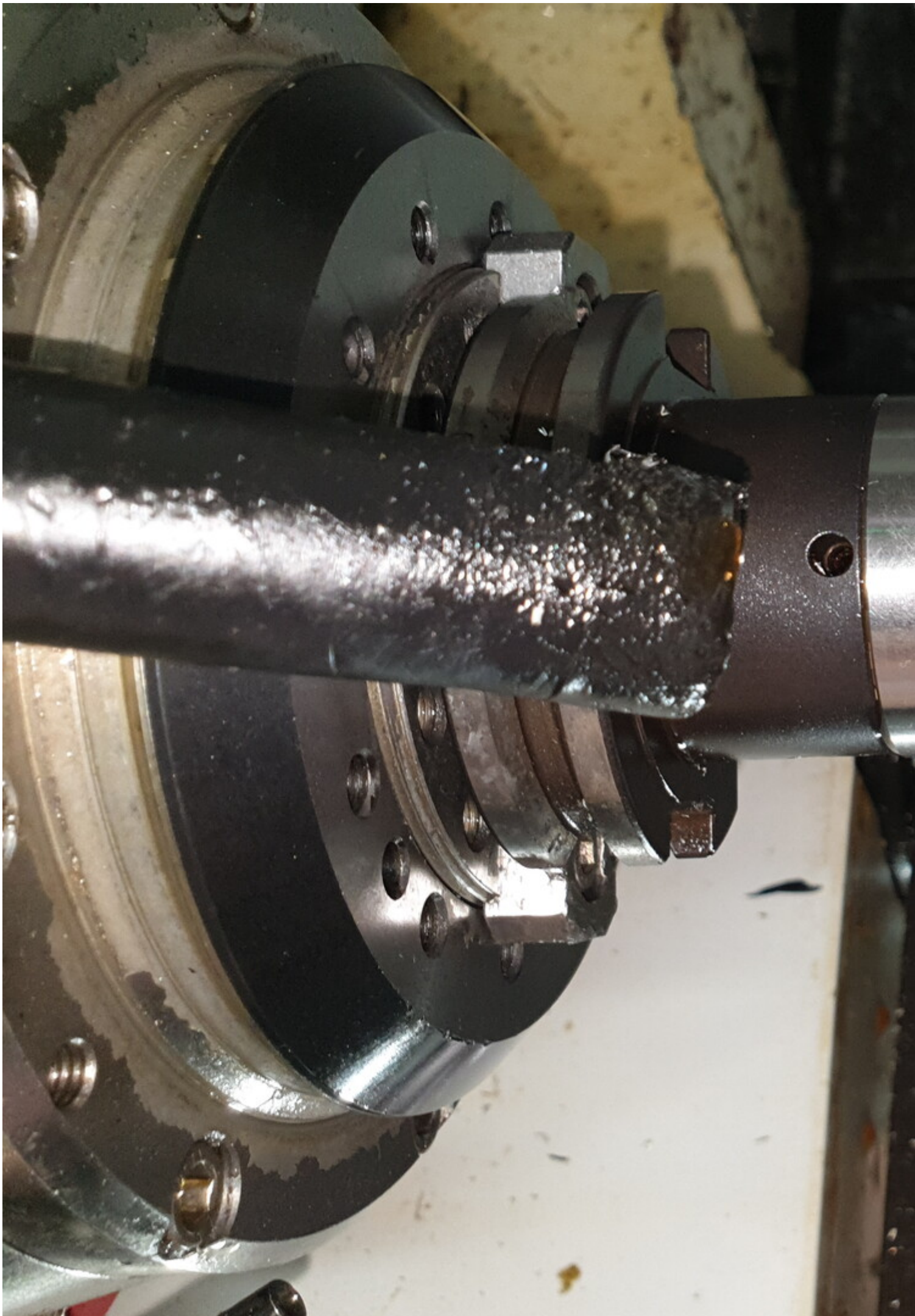












**Video:**



Asset-Trade

Assessment and Sale of Used Assets world wide

Am Sonnenhof 16

47800 Krefeld

Germany

Tel.: +49 2151 32500 33

Fax.: +49 2151 65 29 22

Email: [info@asset-trade.de](mailto:info@asset-trade.de)

Web.: <https://www.asset-trade.de/en>

Generated on 04.04.2026

© Copyright 2026 - [Asset-Trade](#)

Page