

Image not found or type unknown



Ref. No.:  
1335-08311200

## Overview and Technical Data:

# ARISA S-4-630-420-200-FDE DOUBLE MECHANICAL PRESS

**ARISA**



Year of Build:  
Jan 1998

## Description:

## Used ARISA S-4-630-420-200-FDE TRANSFER PRESS for Sale

SIEMENS S7 -300 control, moving bolster, Frame with Die rods, 4 rods, KEMMERICH feeding line with Electronic feeder, material width max. 1500mm, material thickness max. 4mm, straightener 9 straightening rolls and 2 feeding rolls, requested power 11kW, decoiler max. 10 tons capacity, loading chair Electronic transfer: Distance between bars Closed 600 mmm, distance between bars open 1900mm, distance between tools 700mm

## Technical Data for Arisa Press:

- Press Force: 630 tons (6300kN)
- Dimensions
  - Table height over floor height mm
  - Distance between uprights: 4.470 mm
  - Mould installation height mm: 1.000 mm
  - Windows: 2.500 mm
- Table & Ram
  - Table size: 4.200x2.000 mm
  - Top tool Max. Weight: 20,000kg
  - Ram size: 4.200x2.000 mm
  - Ram adjustment: 200 mm
- Stroke
  - Stroke length: 400 mm
  - Strokes Rate Min/Max.: 10 -40 minute
- Power
  - Requested power: 165,5 kW
  - Set power : 260 kW

- Electrical circuit : 400 - 50V - Hz
- Hydraulic pressure: 300 bar
- Other
  - Safety distance time : 0.21s
  - Max. Flywheel speed : 525 rpm
  - Clutch-brake combination : 20 Clutches/min
  - Clutch-brake combination Min. - Max. Pressure : 55 - 65bar
- Dimentions:
  - Height over floor: 7.950 mm
  - Width: 6.100 mm
  - Depth: 3.900 mm
  - Weight: 218.000 kg

**Technical data KEMMERICH RMBM 50.1500 UG -S Straightener with decoiler type V 1000 A - SH-1500 - S**

- Strip width: 200-1500 mm
- Strip thickness: 0.5-4.0 mm (at material strength of 400 N/mm<sup>2</sup>)
- Max. correctable cross-section: 2400 mm<sup>2</sup>
- Number of straightening rolls: 9 pieces (with support rolls)
- Straightening roller Ø: 50 mm
- Number of pull rolls: 2 pieces
- Pull roller Ø: 100 mm
- Maximum strip speed: 32 m/min.
- Connection voltage: 230/400 V - 50 Hz

**Technical Data:**

**Technical Data:**

Control:  
[SIMATIC S7](#)

**Buyer Information:**

Condition:  
[Repairs required](#)  
 Available:  
[Sold](#)  
 Sold as:  
[EXW \(Ex Works - Incoterm\)](#)  
 VAT:  
[19 %](#)  
 Buyers Premium:  
[18 %](#)  
 Location:  
 Germany

**Images:**



1







**microjet**  
Ultraschall  
Spinnmaschinen

CE

microjet GmbH - D 78187 Karlsruhe  
Im Husarentager 13 - Tel. +049 (0)721-70111  
Fax +049 (0)721-70112 - E-Mail info@microjet.de

Baujahr - Projekt	11000015
Typ	Masch. Nr 67
Betriebsdruck [bar]	max 10 bar
Spannung [V]	230 U
Schmierstoff	

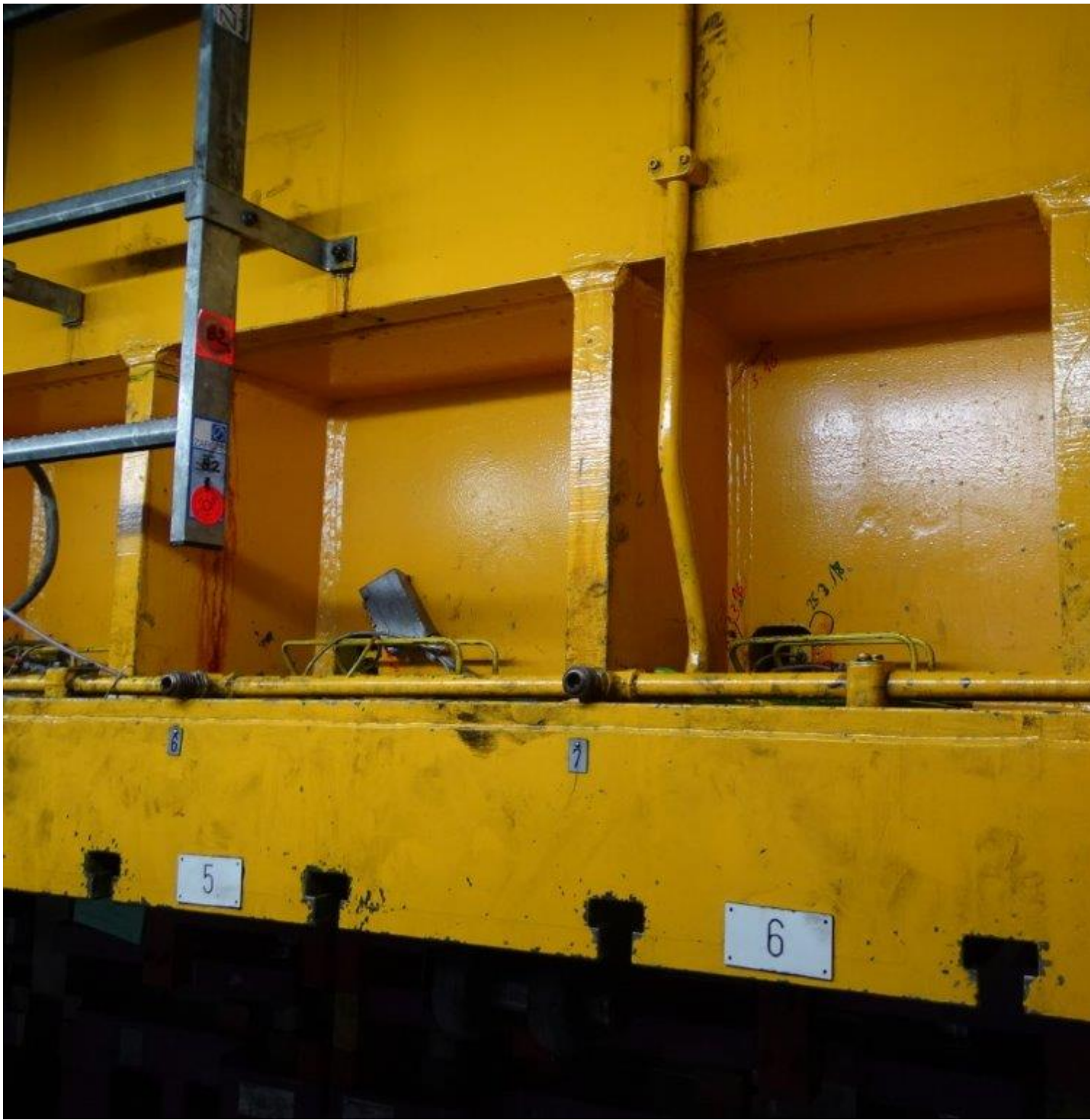




6















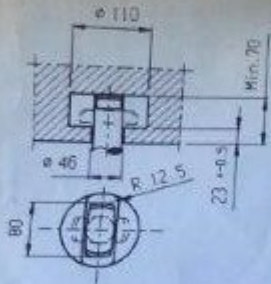




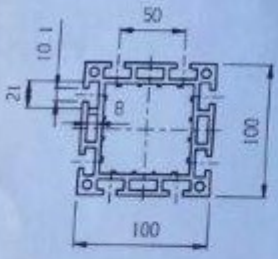




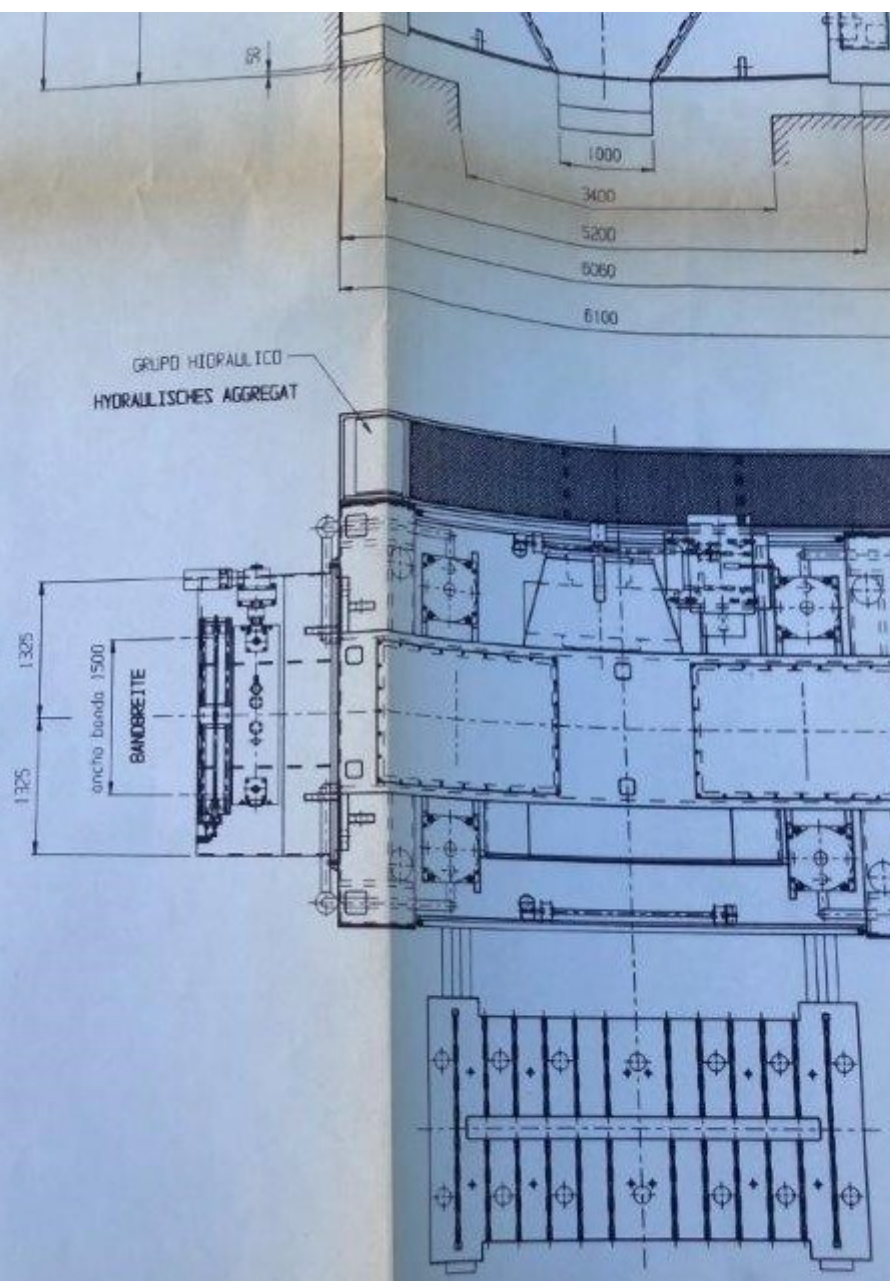
POSICION CIZALLA PARA TROQUELES  
 PROGRESIVOS  
 POSITION SCHNITTSCHERE FÜR FOLGENWERKZEUGE

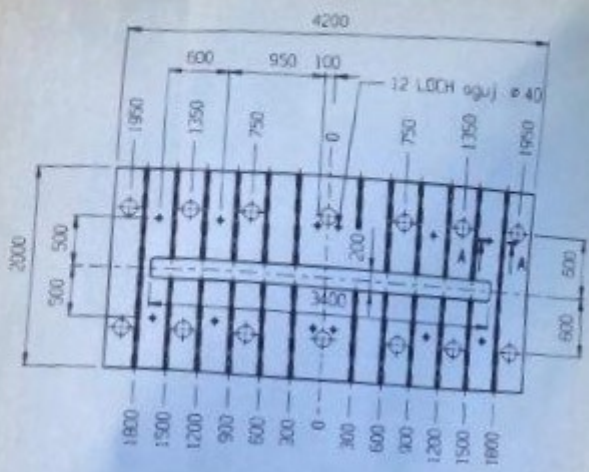
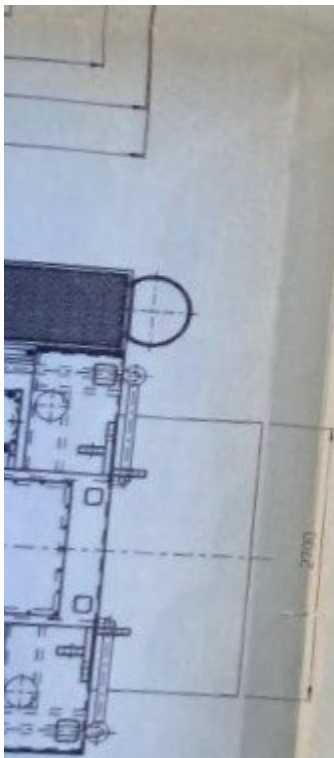


AMARRE RAPIDO  
 FO, HILMA 2155-160  
 SCHNELLSPANNUNG

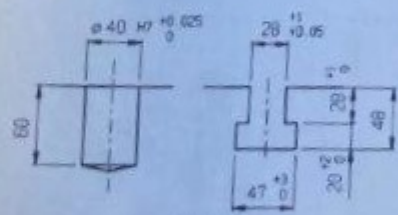


BARRAS DEL TRANSFERT  
 TRANSFER-GREIFERSCHIENEN

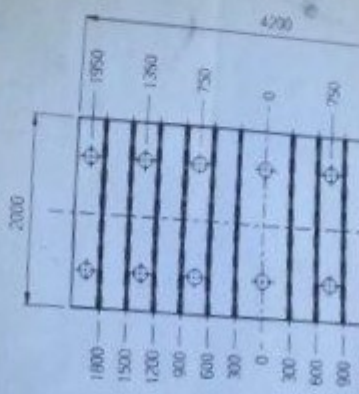




MESA DESPLAZABLE  
SCHIEBETISCH



SECCION A-A  
SCHNITT A-A



BASE DE CORREDERA  
STOSSELPLAHE

4				
3				
2	20-2-56	Oruñan		Distancia min.
1	3-11-47	Norie		
00	Fecha	Realización	Comprobación	
MODIFICACION				
Elaborado		Nombre		
Fecha	Finis	<input checked="" type="checkbox"/> Grande	<input type="checkbox"/> Intermedio	<input type="checkbox"/> Pequeño
Dibujar	3-09-67	Norie	<input checked="" type="checkbox"/> Intermedio	<input type="checkbox"/> Pequeño
Legenda			<input checked="" type="checkbox"/> Intermedio	<input type="checkbox"/> Pequeño
Scale	E62 TECHNISCHE DATEN CHARACTERISTIC			
1:40	PRESSE PRENSA: S-4-630-420-200			

6es 218/0

4				
3				
2	20-3-98	Orestes		Distancia min. entre barras 700mm
1	3-11-97	Norte		
Nº	Fecha	Realizacion	Comprobacion	Observaciones

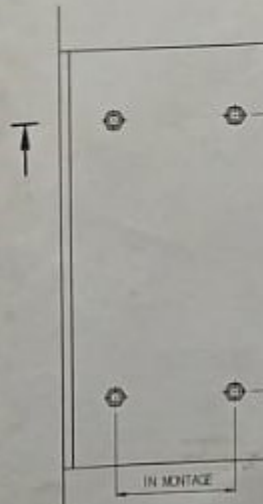
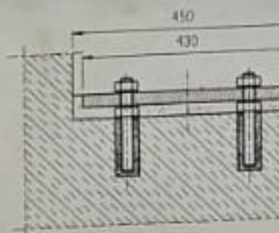
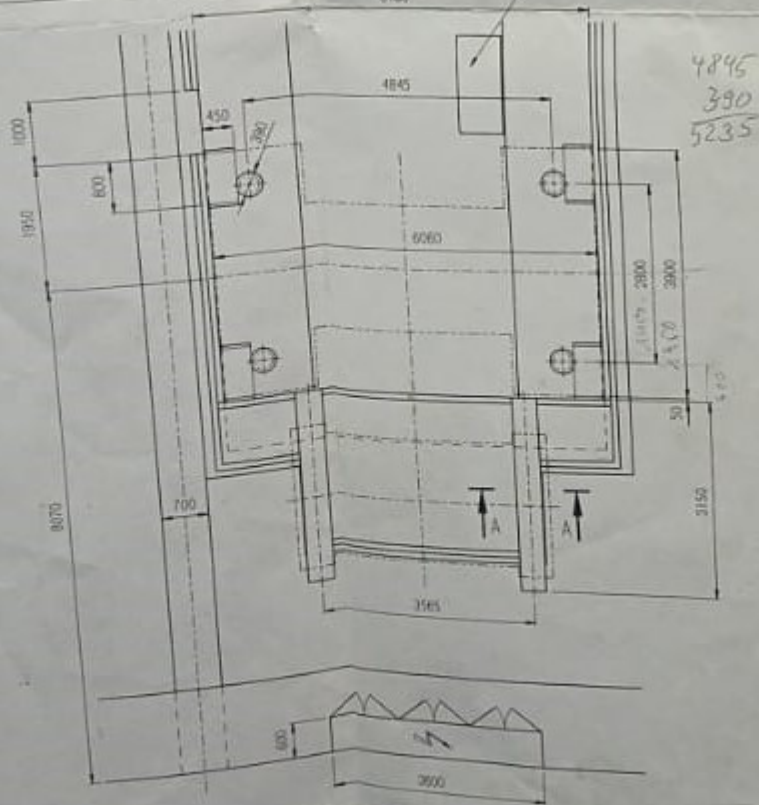
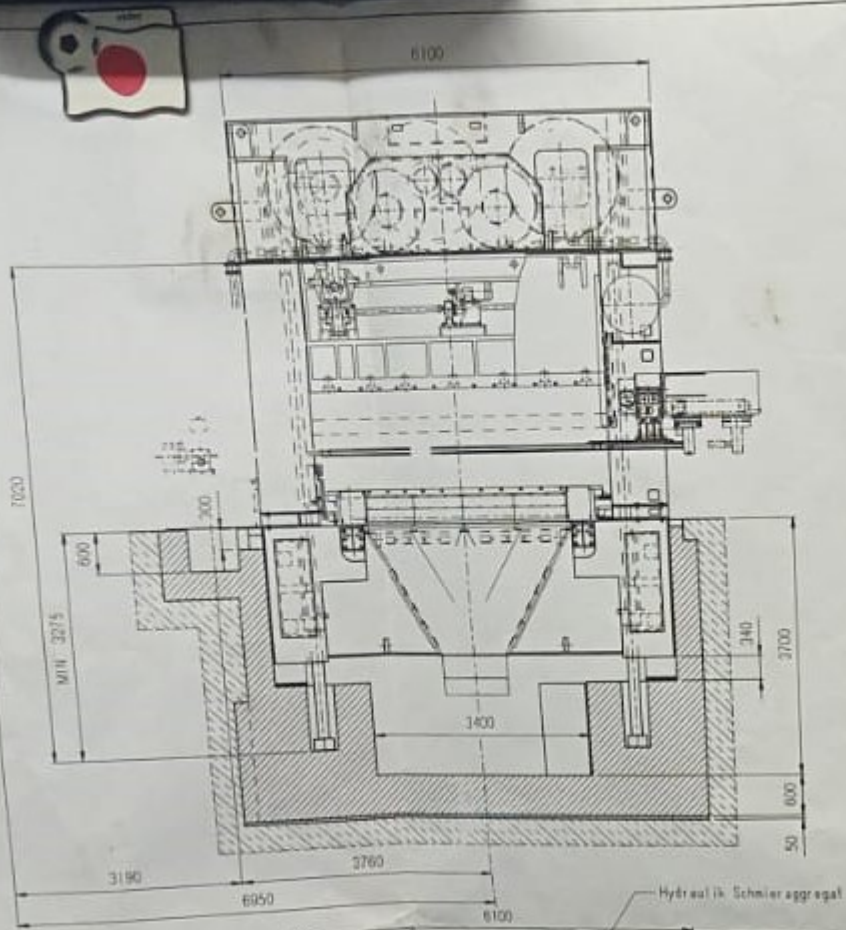
## MODIFICACIONES

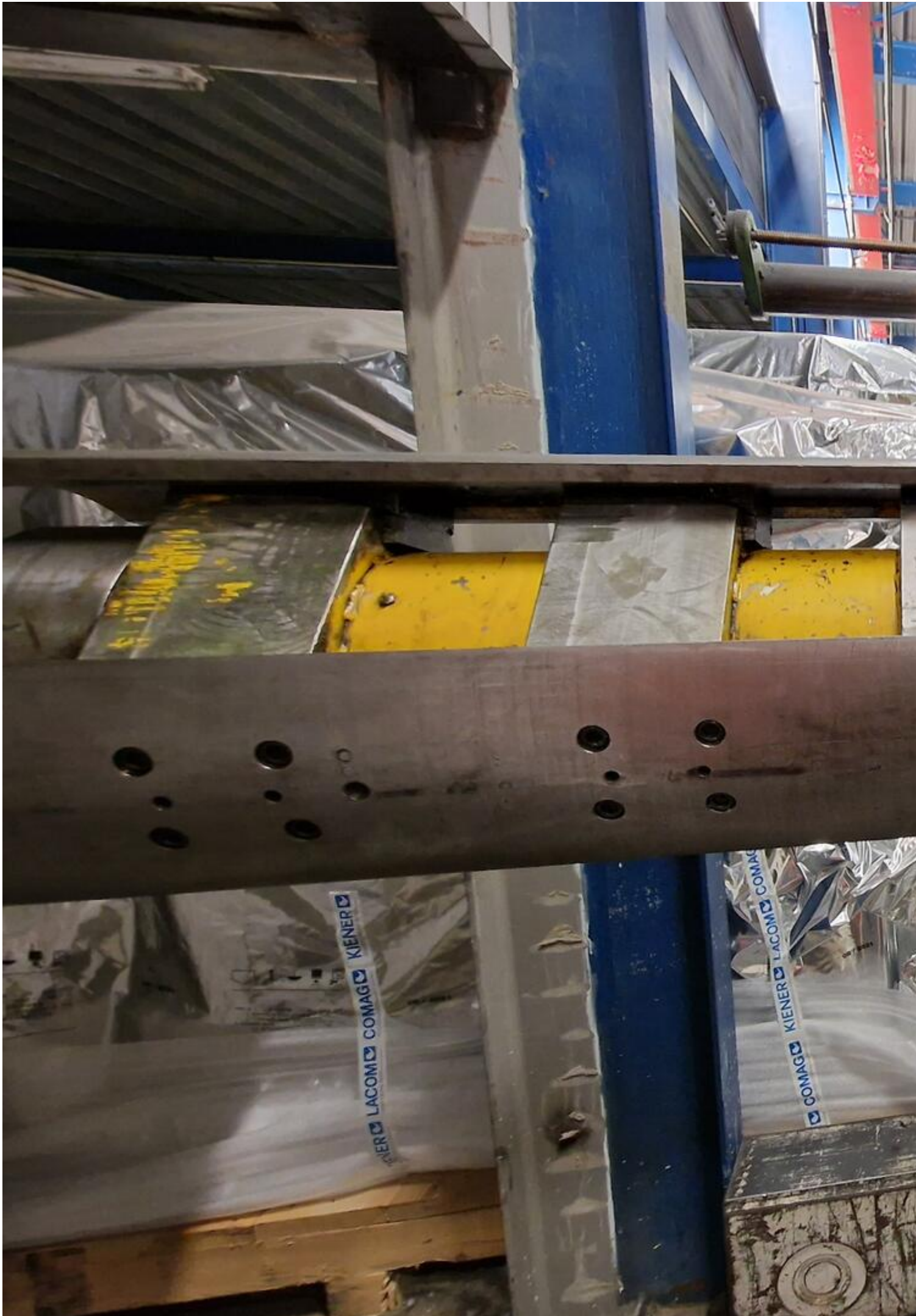
Nº piezas	Nombre	Material
-----------	--------	----------

	Fecha	Firma	~ En bruto bien acabado
Dibujado	3-09-97	Norte	▽ Desbastado
Comprobado			▽▽ Alisado
			▽▽▽ Pulido

**ARISA.**  
LOGROÑO-ESPA

Escola	E67	TECHNISCHE DATEN CHARACTERISTICAS	Nº DCI
1/40		PRESSE PRENSA: S-4-630-420-200-FDE	E67





KIENER LACOM COMAG

COMAG KIENER LACOM COMAG

















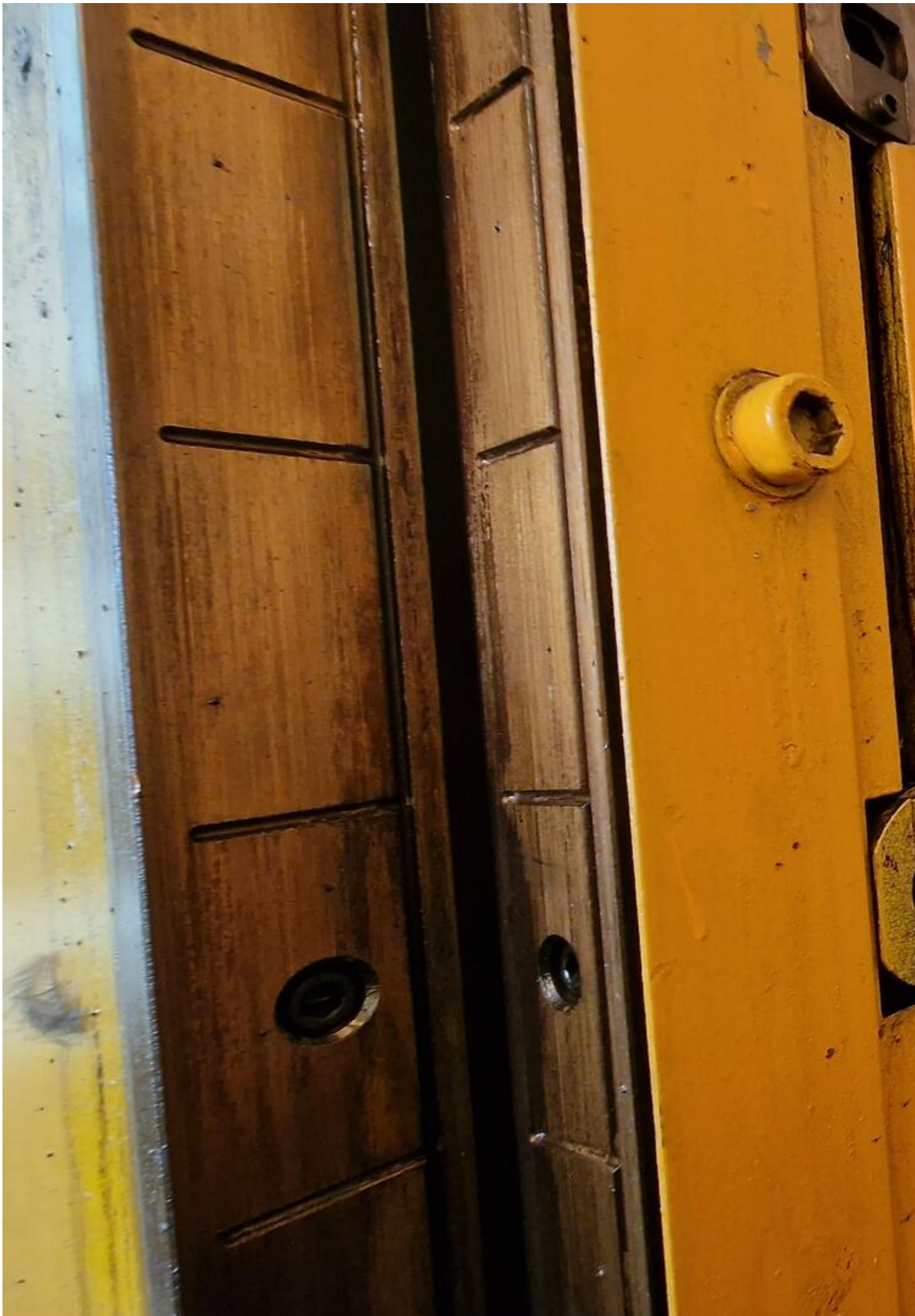




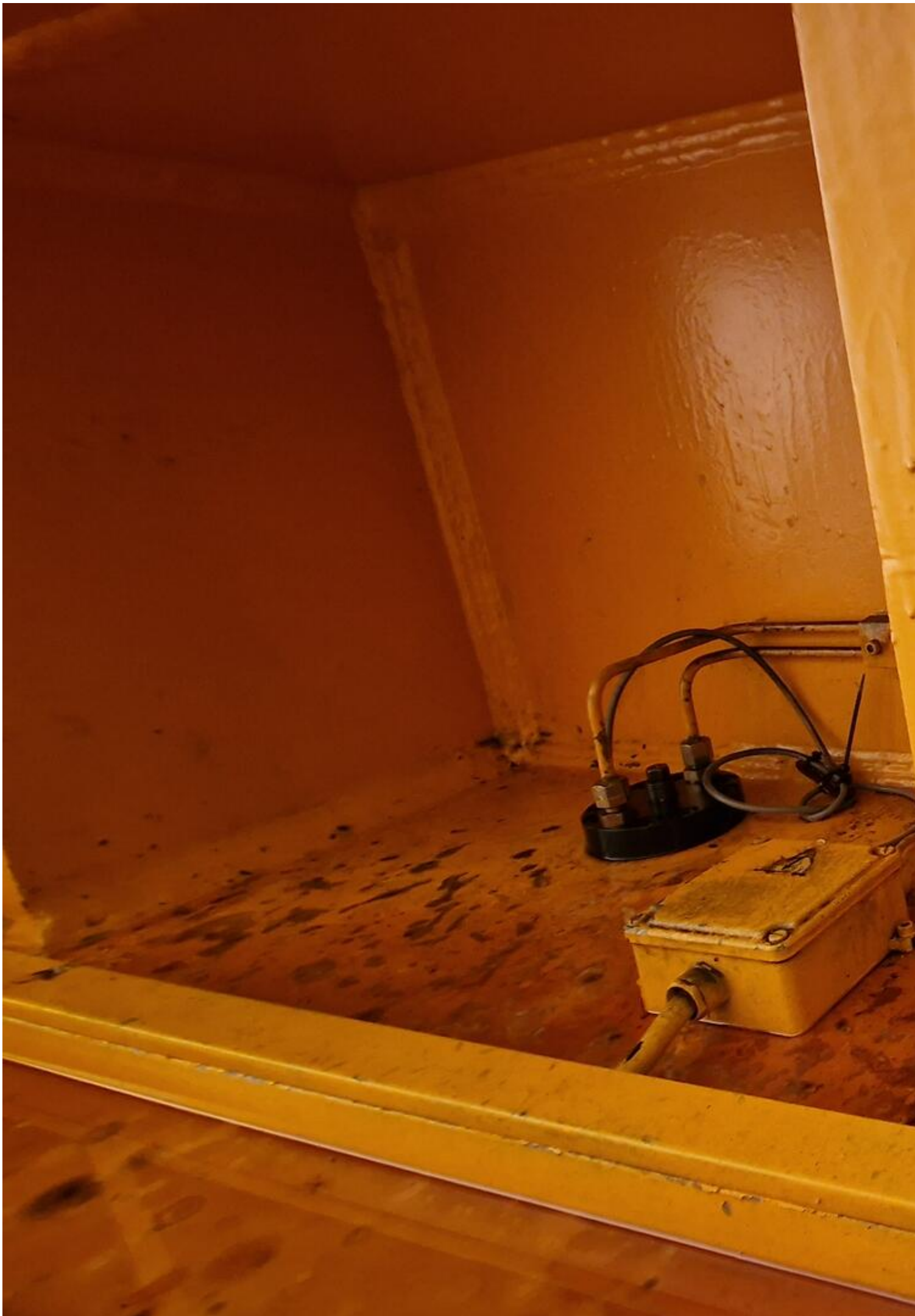














2

E6







**Video:**



Asset-Trade

Assessment and Sale of Used Assets world wide

Am Sonnenhof 16

47800 Krefeld

Germany

Tel.: +49 2151 32500 33

Fax.: +49 2151 65 29 22

Email: [info@asset-trade.de](mailto:info@asset-trade.de)

Web.: <https://www.asset-trade.de/en>

Ref. No.:  
1335-08311200

## Overview and Technical Data:

# ARISA S-4-630-420-200-FDE DOUBLE MECHANICAL PRESS

## ARISA



Year of Build:  
Jan 1998

## Description:

### Used ARISA S-4-630-420-200-FDE TRANSFER PRESS for Sale

SIEMENS S7 -300 control, moving bolster, Frame with Die rods, 4 rods, KEMMERICH feeding line with Electronic feeder, material width max. 1500mm, material thickness max. 4mm, straightener 9 straightening rolls and 2 feeding rolls, requested power 11kW, decoiler max. 10 tons capacity, loading chair Electronic transfer: Distance between bars Closed 600 mm, distance between bars open 1900mm, distance between tools 700mm

#### Technical Data for Arisa Press:

- Press Force: 630 tons (6300kN)
- Dimensions
  - Table height over floor height mm
  - Distance between uprights: 4.470 mm
  - Mould installation height mm: 1.000 mm
  - Windows: 2.500 mm
- Table & Ram

- Table size: 4.200x2.000 mm
- Top tool Max. Weight: 20,000kg
- Ram size: 4.200x2.000 mm
- Ram adjustment: 200 mm
- Stroke
  - Stroke length: 400 mm
  - Strokes Rate Min/Max.: 10 -40 minute
- Power
  - Requested power: 165,5 kW
  - Set power : 260 kW
  - Electrical circuit : 400 - 50V - Hz
  - Hydraulic pressure: 300 bar
- Other
  - Safety distance time : 0.21s
  - Max. Flywheel speed : 525 rpm
  - Clutch-brake combination : 20 Clutches/min
  - Clutch-brake combination Min. - Max. Pressure : 55 - 65bar
- Dimentions:
  - Height over floor: 7.950 mm
  - Width: 6.100 mm
  - Depth: 3.900 mm
  - Weight: 218.000 kg

**Technical data KEMMERICH RMBM 50.1500 UG -S Straightener with decoiler type V 1000 A - SH-1500 - S**

- Strip width: 200-1500 mm
- Strip thickness: 0.5-4.0 mm (at material strength of 400 N/mm<sup>2</sup>)
- Max. correctable cross-section: 2400 mm<sup>2</sup>
- Number of straightening rolls: 9 pieces (with support rolls)
- Straightening roller Ø: 50 mm
- Number of pull rolls: 2 pieces
- Pull roller Ø: 100 mm
- Maximum strip speed: 32 m/min.
- Connection voltage: 230/400 V - 50 Hz

**Technical Data:**

**Technical Data:**

Control:

[SIMATIC S7](#)

**Buyer Information:**

Condition:

[Repairs required](#)

Available:

[Sold](#)

Sold as:

[EXW \(Ex Works - Incoterm\)](#)

VAT:

[19 %](#)

Buyers Premium:

[18 %](#)

Location:

Germany

## Images:









**microjet**  
Ultraschall  
Schweiß- und Laserschweißsysteme

CE

microjet GmbH - D 78187 Karlsruhe  
Im Husarenlager 13 - Tel. +049 (0)721-70111  
Fax +049 (0)721-70112 - E-Mail info@microjet.de

Baujahr - Projekt	11000015
Typ	Masch. Nr 67
Betriebsdruck [bar]	max 10 bar
Spannung [V]	230 U
Schmierstoff	

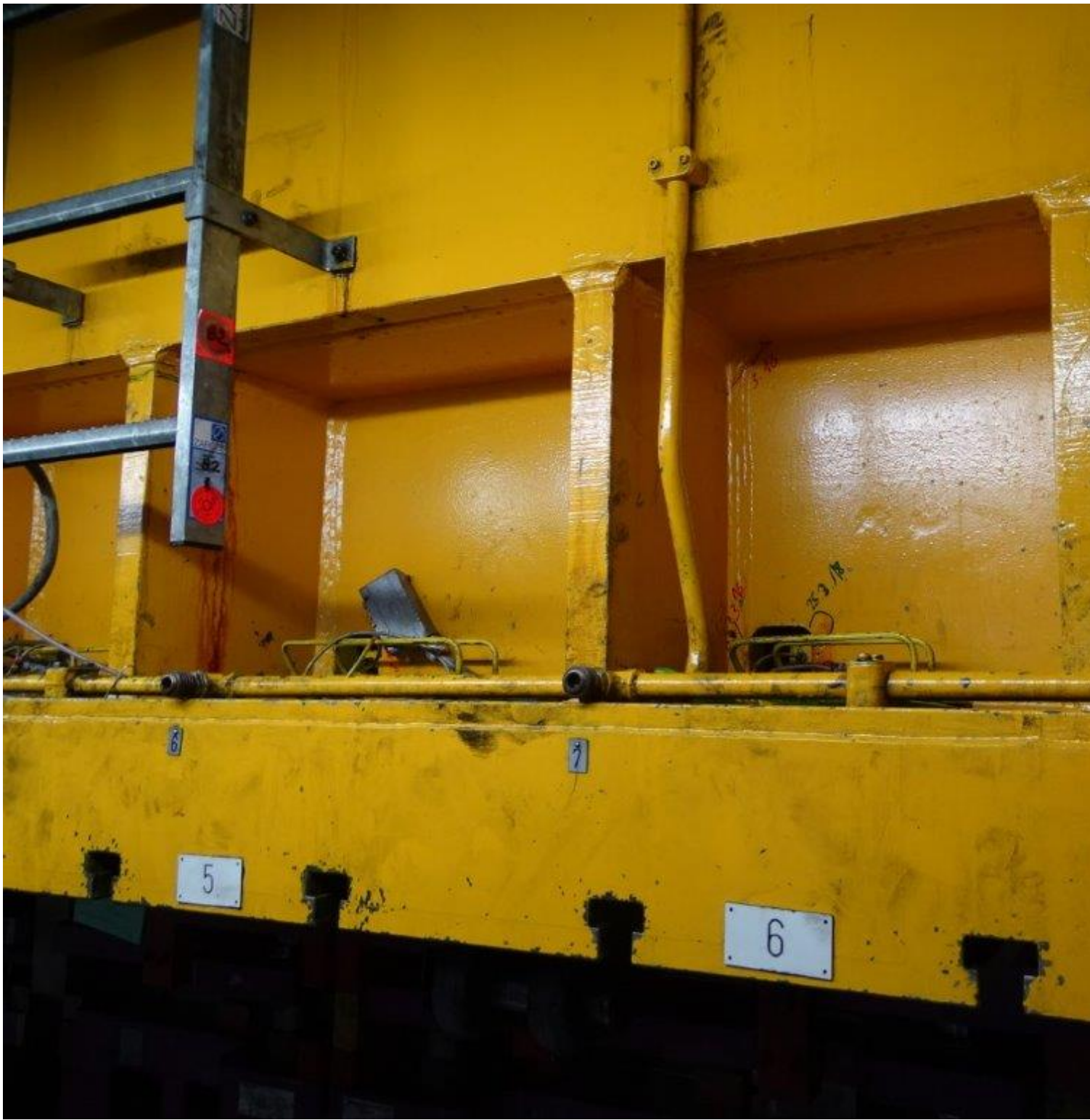




6















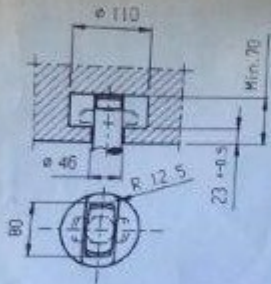




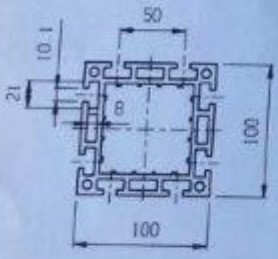




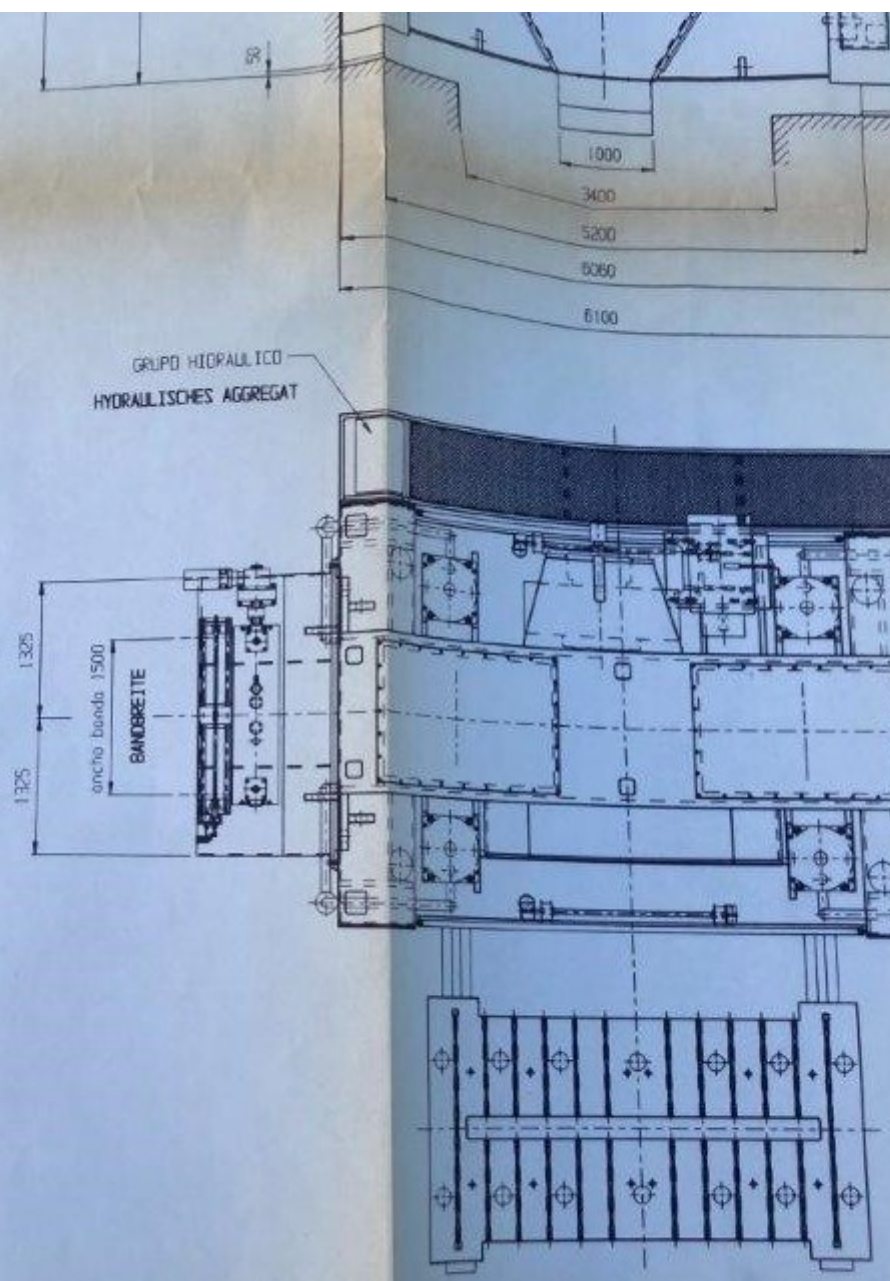
POSICION CIZALLA PARA TROQUELES  
 PROGRESIVOS  
 POSITION SCHOPFSCHERE FÜR FOLGENWERKZEUGE

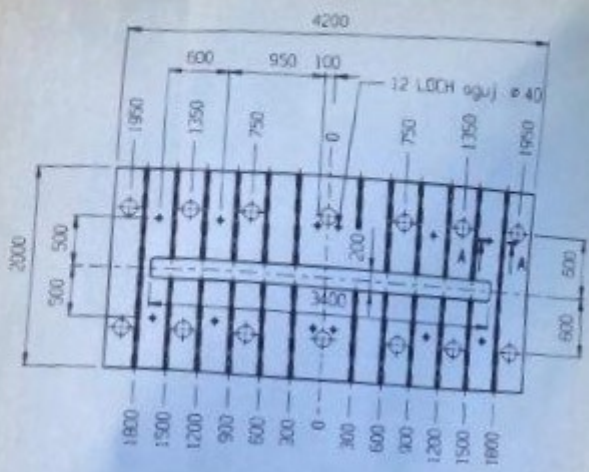
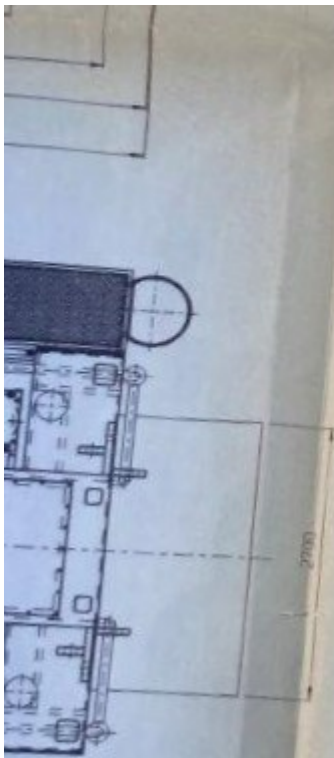


AMARRE RAPIDO  
 Fo, HILMA 2155-160  
 SCHNELLSPANNUNG

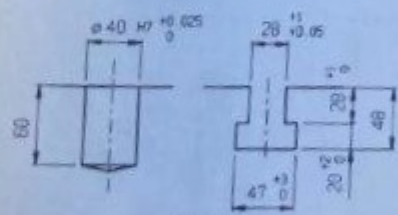


BARRAS DEL TRANSFERT  
 TRANSFER-GREIFERSCHIENEN

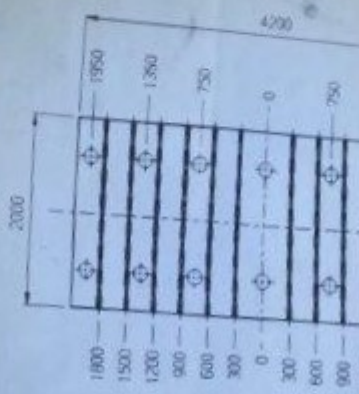




MESA DESPLAZABLE  
SCHIEBETISCH



SECCION A-A  
SCHNITT A-A



BASE DE CORREDERA  
STOSSELPLAHE

4				
3				
2	20-2-56	Oruñan		Distancia min.
1	3-11-47	Norie		
0	Fecha	Realización	Comprobación	
<b>MODIFICACION</b>				
Elaborado		Nombre		
Fecha	Fin	<input checked="" type="checkbox"/> Grande	<input type="checkbox"/> Intermed	<input type="checkbox"/> Peque
Dibuj	3-09-67	Norie	<input checked="" type="checkbox"/> Intermed	<input type="checkbox"/> Peque
Legenda			<input checked="" type="checkbox"/> Intermed	<input type="checkbox"/> Peque
Escal	E62 TECHNISCHE DATEN CHARACTERISTIC			
1:40	PRESSE PRENSA: S-4-630-420-200			

6es 218/0

4				
3				
2	20-3-98	Orestes		Distancia min. entre barras 700mm
1	3-11-97	Norte		
Nº	Fecha	Realizacion	Comprobacion	Observaciones

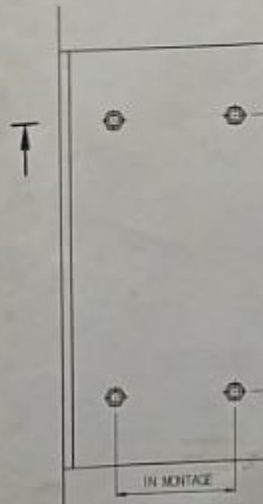
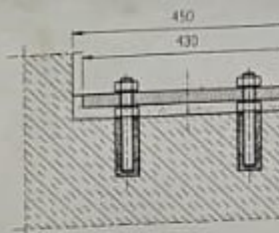
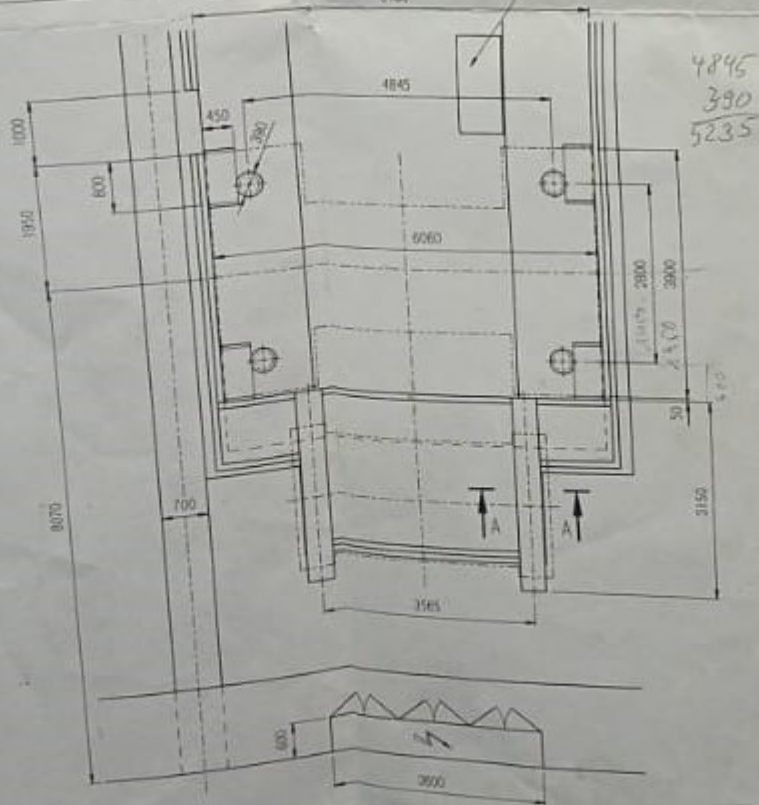
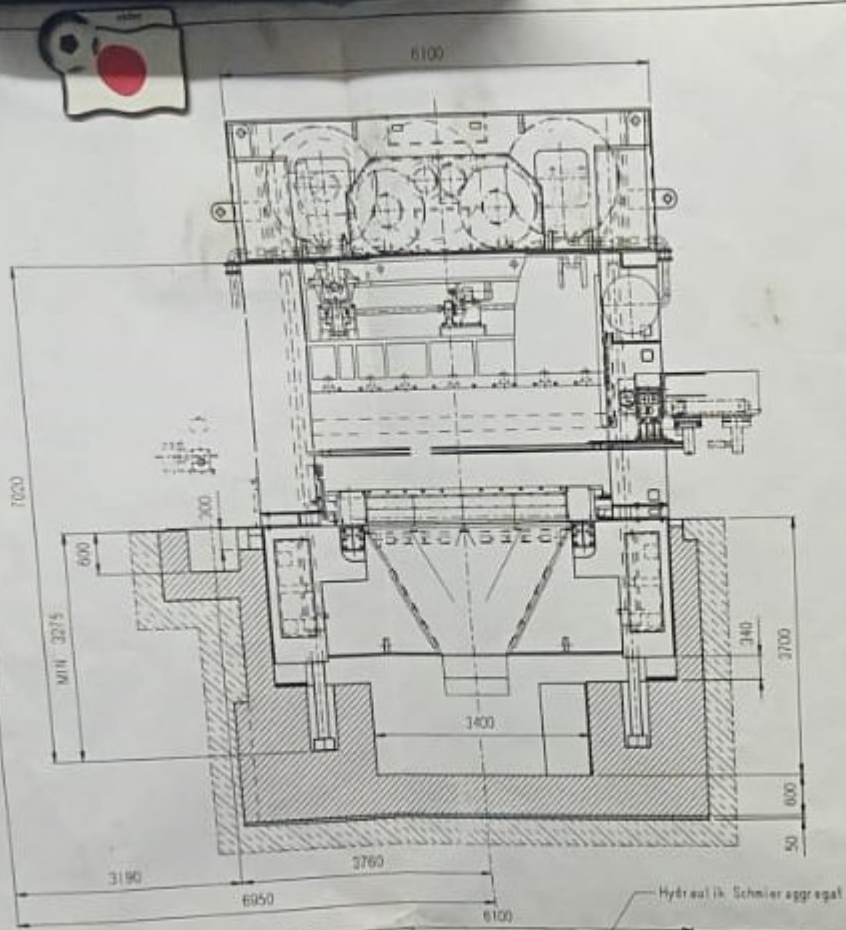
## MODIFICACIONES

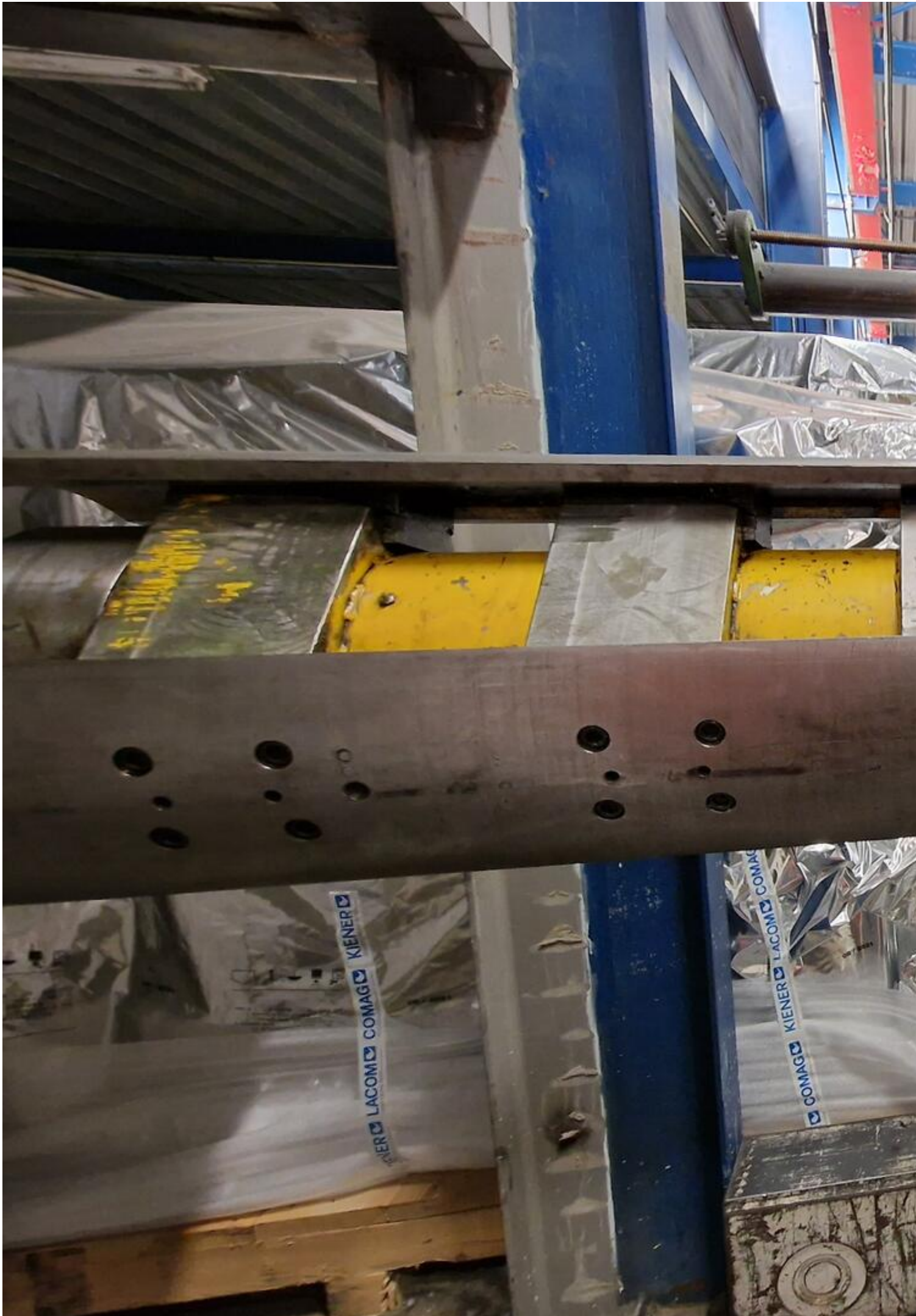
Nº piezas	Nombre	Material
-----------	--------	----------

	Fecha	Firma	~ En bruto bien acabado
Dibujado	3-09-97	Norte	▽ Desbastado
Comprobado			▽▽ Alisado
			▽▽▽ Pulido

**ARISA.**  
LOGROÑO-ESPA

Escola	E67	TECHNISCHE DATEN CHARACTERISTICAS	Nº DCI
1/40		PRESSE PRENSA: S-4-630-420-200-FDE	E67









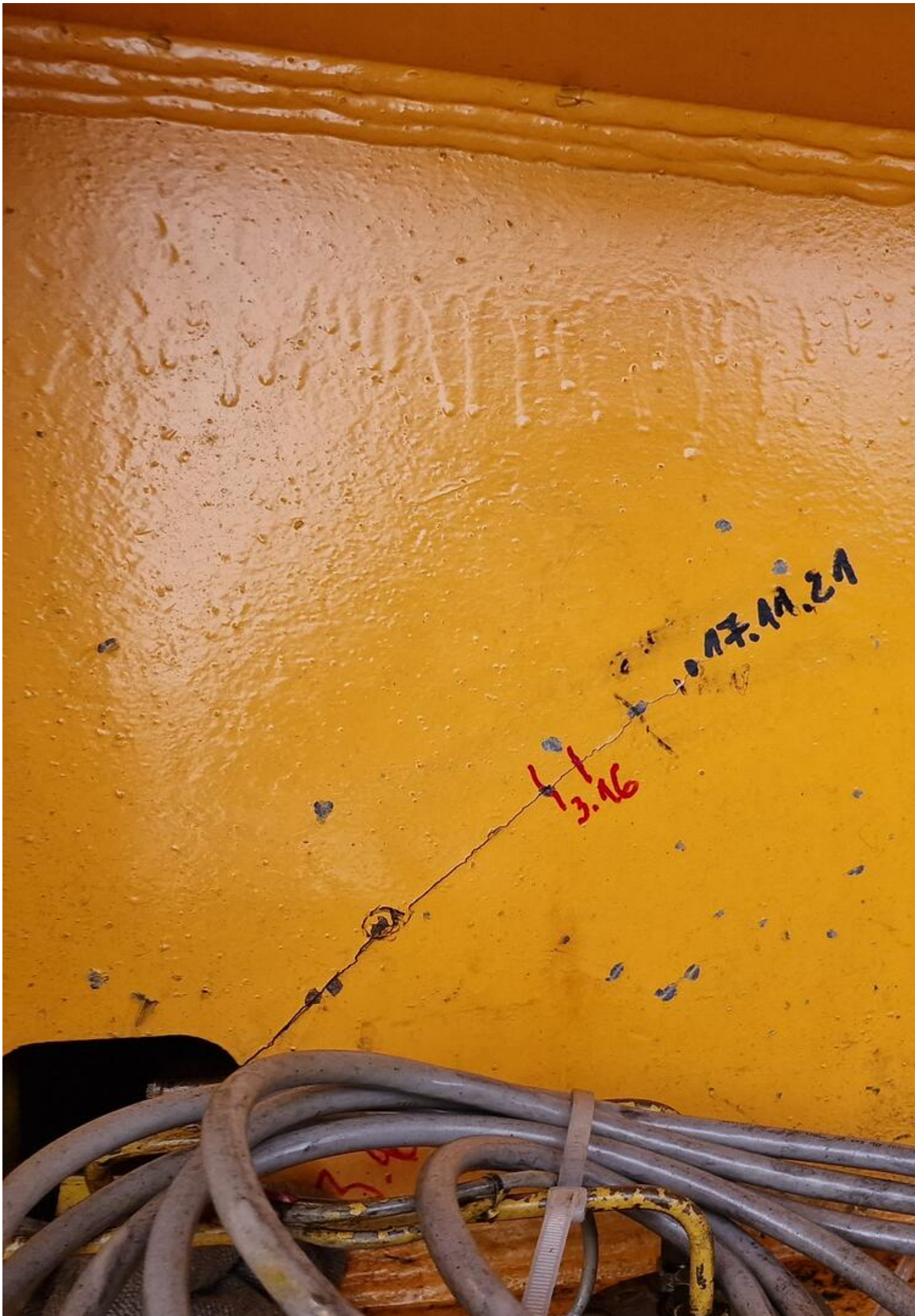












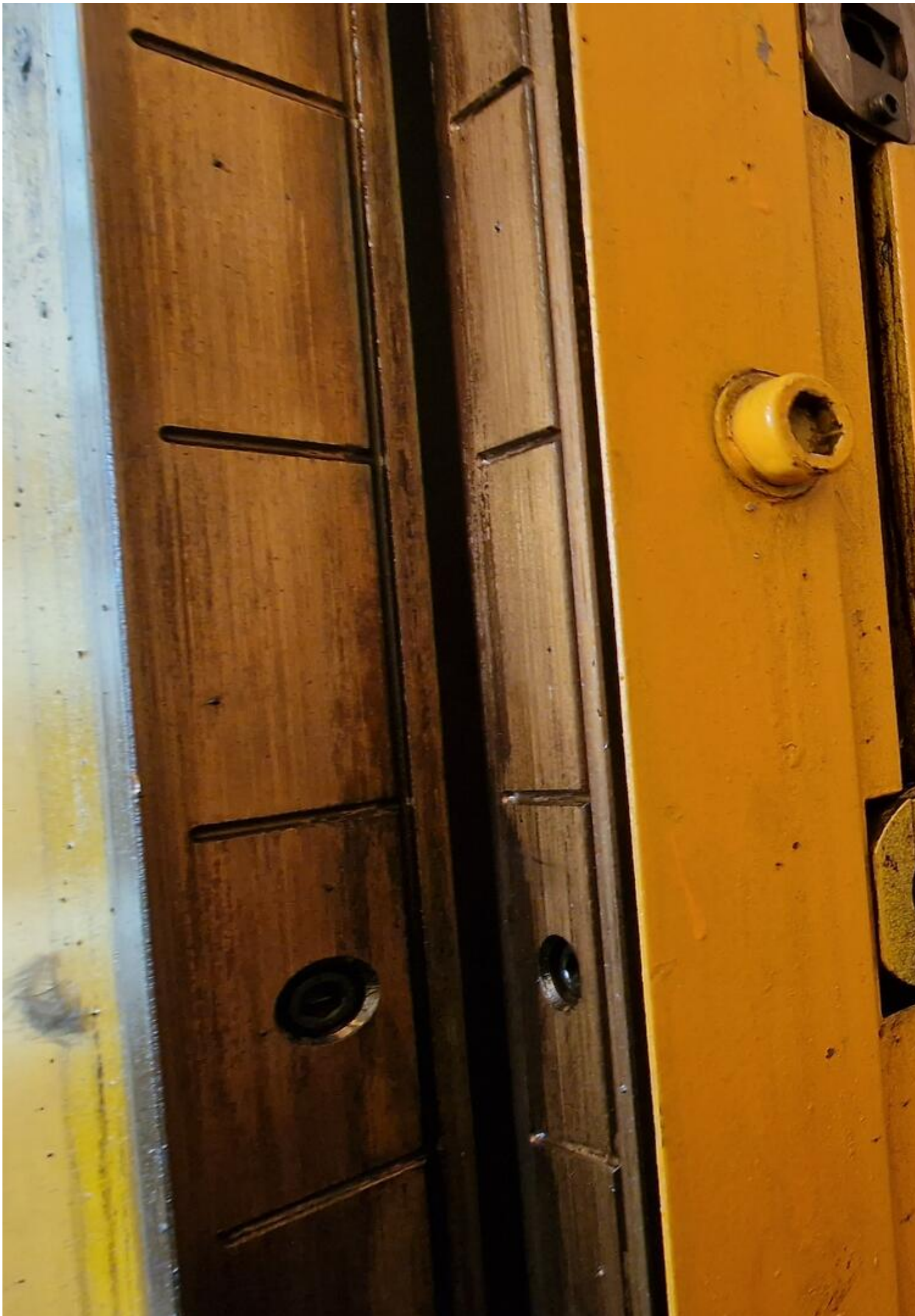




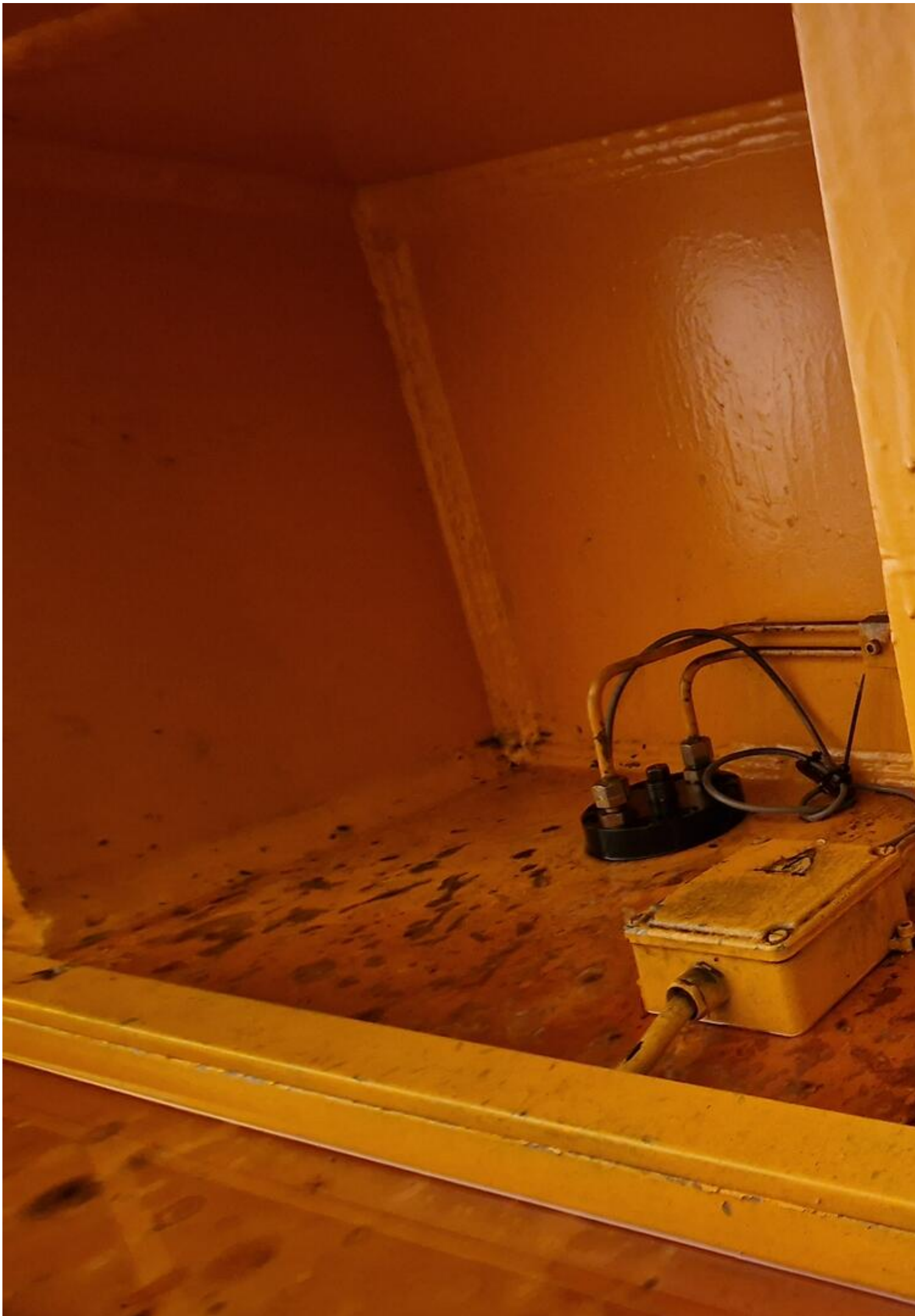














2

E6







**Video:**



Asset-Trade

Assessment and Sale of Used Assets world wide

Am Sonnenhof 16

47800 Krefeld

Germany

Tel.: +49 2151 32500 33

Fax.: +49 2151 65 29 22

Email: [info@asset-trade.de](mailto:info@asset-trade.de)

Web.: <https://www.asset-trade.de/en>

Generated on 30.04.2026

© Copyright 2026 - [Asset-Trade](#)

Page