



Image not found or type unknown

Ref. No.:

1345-07111000

## Overview and Technical Data:

**3x CHIRON DZ15 S Magnum high speed VMC**

**CHIRON**

**chiron**

---

---

Year of Build:

Jan 2014

## Description:

# Used CHIRON DZ15 S Magnum high speed - vertical CNC machining centre.

**3x pieces available : 1x 2013 & 2x 2014.**

- CNC control : SIEMENS 840D solution line with 10,4" TFT colour screen.
- Operating hours approx. 32.500 AN / spindle 14.500 hours.

## Technical data:

- Travels - Direct path measuring system in all axes:
  - X-axis: 630 mm
  - Y-axis: 400 mm
  - Z-axis: 360 mm
  - Rapid traverse speed: 75/ 75/ 75 m/min
  - NC rotary table, type ATU 200 4th axis
    - Repeat accuracy +/- 8
    - Bridge dimension 800 mm
    - Swivel radius 285 mm
    - Face plate Ø 225 mm
- Main spindle drive with 2x AC motors:
  - Speed each up to: 12,000 min<sup>-1</sup>
  - 9.5 kW at 100% ED
  - 14.0 kW at 15% ED
  - Torque: max. 90 Nm
  - Spindle distance in: X-axis 320 mm
  - Coolant system / IKZ: 70 bar in 7 different pressure stages
  - Steel E335
    - Drilling capacity: 2 x Ø 36 mm
    - Thread cutting: 2 x M 24
    - Milling capacity: 2 x 150 cm<sup>3</sup>/min
- Tool changer Automatic:
  - Tool places: 2 x 32
  - Tool shank: HSK-A 63 DIN 69893
  - Tool Ø: max. 78 mm
  - Tool-Ø with free neighbouring places: max. 140 mm
  - Tool length: max. 300 mm
  - Tool weight: max. 5.0 kg
  - Tool change time: approx. 0.9 s (depending on control)
  - Chip to chip time: approx. 2.4 s (depending on control)
- Mini handwheel
- Flush gun
- Chip conveyor: 320 l
- Extinguishing system Waterfog (Minimax)
- Machine preparation for central coolant system
- Suction connection
- Tub rinsing

- Coolant package
- Hydraulic connection for 200 bar
- Operating instructions
- Renishaw probe package OMP 40-2LS
- Monitoring system as well as
  - MCIS DNC
  - Remote diagnostics and teleservice
  - V24 interface
  - Universal interface RS 232C
- Machine colour:
  - light grey according to NCS S1502-B
  - blue according to NCS S2050-R80B
  - basalt grey according to RAL 7012
- Mains connection:
  - Supply voltage machine 3x400 Volt  $\pm$  10%
  - Voltage socket 230 Volt  $\pm$  10%
  - 30 kVA

---

## **CHIRON 15 Series:**

The 15 Series Machining Centers are best in class for speed, compact design and reliability. They have huge reserves for highly productive grinding and thanks to their modular design, for example with several spindle and table versions, they can be configured to create the perfect individual solution. Choose them for consistently fast processing and high availability with low unit costs.

Single- and double-spindle machines can be equipped with a chain-type tool changer to process complex workpieces with many tools. Alternatively, the body tool changer is currently the fastest tool change system on the market, ideal for high precision machining of countersunk holes. The FZ/DZ 15 W with load changer for loading and unloading while the machine is running are experts in large quantities, as is the TZ 15 W with four powerful spindles and workpiece changer.

## **CHIRON 15 Highlights**

- Fast, productive machining
- Reliable performance
- Compact machine layout
- Vertical traveling column
- Mineral casting machine bed
- High rigidity and thermal stability
- Dynamic direct drives and precision guides
- High running, positioning, and long-term precision
- Robust CHIRON rotary axes
- Fully enclosed working area, stainless steel covers
- Ideal chip flow directly into the chip feeder
- Ergonomic operating and loading concept
- Easy access to all units for servicing

## **Technical Data:**

## Technical Data:

Control:

[SINUMERIK 840D](#)

Machine Hours:

32.500 hrs.

Spindle Hours:

14.500 hrs.

Spindle Speed:

12.000 rpm

Tool Holder:

[HSK-A63](#)

Tool Capacity:

32 x

## Travels:

X-Axis:

630 mm

Y-Axis:

400mm

Z-Axis:

360 mm

## Dimensions and Weight:

Height:

3.040 mm

Width:

3.700 mm

Length:

3.550 mm

Weight:

9.200 kg

## Buyer Information:

Condition:

[Very good condition](#)

Availability:

[Immediately](#)

Sold as:

[EXW \(Ex Works - Incoterm\)](#)

VAT:

[19 %](#)

Buyers Premium:

[18 %](#)

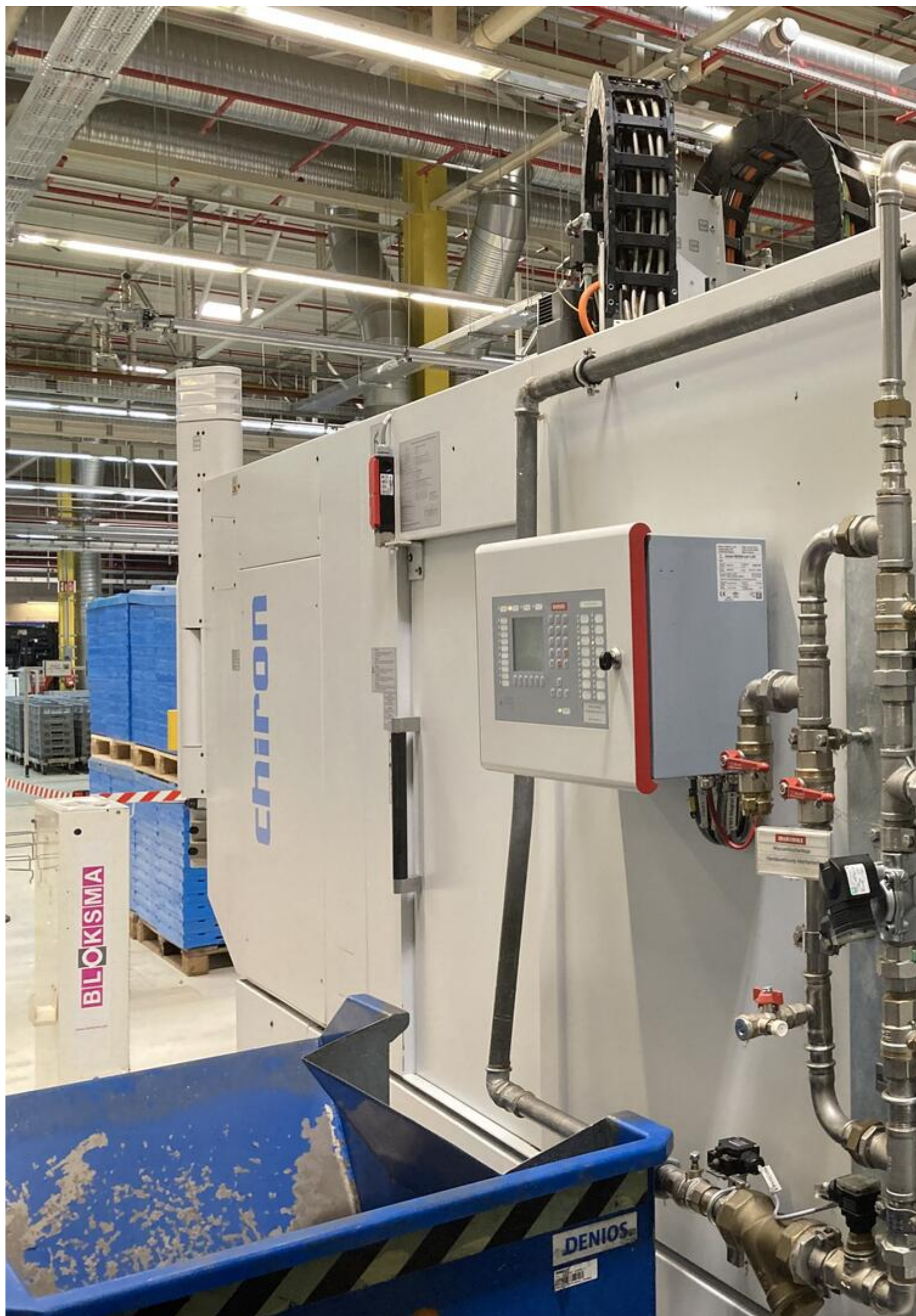
Location:

Germany

















+  
**CHIRON-WERKE**  
**GmbH & Co. KG**  
**D-78532 TUTTLINGEN**  
**Kreuzstraße 75**  
 Type **DZ15 SM HS**  
 Nr. **1**  
 Baujahr /  
 Gewicht **2014 / 9600 kg**  
**MADE IN GERMANY**

1129701

Stromart	Kind of current	Mode d'alimentation	Alimentazione
Betriebsspannung	Working voltage	Tension de service	Tensione d'esercizio
Steuerspannung	Control voltage	Tension de commande	Tensione di controllo
max. Kurzschlussstrom	max. Short-circuit current	max. Courant de court-circuit	max. Corrente di cortocircuito
Leistung	Power	Puissance	Potenza
Nennstrom	Rated current	Intensité nominale	Corrente nominale
Sicherung	Fuse	Fusible	Fusibile
Stromlaufplan	Circuit diagram	Schéma électrique	Schema elettrico



6000 h

6

4

25

2000 h

2

6

18-21

24

14-17

23

22

10-13

7

8

250 h

2

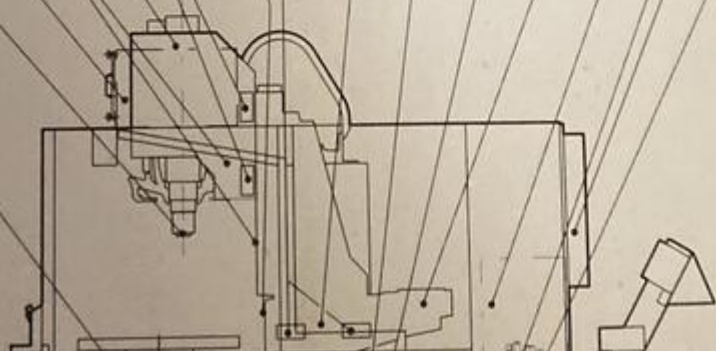
5

3

4

24 h

1







CE



**ACHTUNG**  
Maschine mit geschlossenem Arbeitsraum nur mit einer ausreichend dimensionierten Absauganlage betreiben.

**ATTENTION**  
Use an mist collector of sufficient capacity if operating the machine in an enclosed working area.

**ATTENTION**  
Ne faire fonctionner la machine avec l'espace de travail fermé qu'avec une unité d'aspiration suffisamment dimensionnée.

**ATTENZIONE**  
Usare il centro di lavoro con zona di lavoro chiusa solo con un impianto di aspirazione ben dimensionato.

**ATENCIÓN**  
Hacer funcionar la máquina con zona de trabajo cerrada solo con una instalación de aspiración suficientemente dimensionada.



**0Q1**  
**HAUPTSCHALTER**  
Achtung: Bei ausgeschaltetem Hauptschalter ist nicht der gesamte Schrank spannungslos zu machen. Einzelne Komponenten können noch unter Spannung stehen.

Die Maschine darf nur von  
und autorisierten Personen

Jede Person die mit der Aufstellung,  
Inspektion des Fertigungszentrums  
und die Sicherheitsvorschriften

The machine may only be  
authorized personnel.

The personnel instructed to install  
machining centre must have read  
and safety regulations.

Seules des personnes  
utiliser la machine.

Toute personne s'occupant de l'  
inspection du centre d'usinage  
et les prescriptions de sécurité.

La macchina deve essere  
unicamente da personale  
ed autorizzato.

Ogni persona incaricata dell'  
della riparazione e dell'ispezione  
attentamente e capire le istruzioni.

La máquina solamente  
especialmente instruido.

Cada persona, que se ocupa  
reparación y de la inspección  
y entendido la instrucciones.



Asset-Trade

Assessment and Sale of Used Assets world wide

Am Sonnenhof 16

47800 Krefeld

Germany

Tel.: +49 2151 32500 33

Fax.: +49 2151 65 29 22

Email: [info@asset-trade.de](mailto:info@asset-trade.de)

Web.: <https://www.asset-trade.de/en>

Ref. No.:  
1345-07111000

**Overview and Technical Data:**



**3x CHIRON DZ15 S Magnum high speed VMC**

**CHIRON**

**chiron**



Year of Build:  
Jan 2014

**Description:**

**Used CHIRON DZ15 S Magnum high speed - vertical CNC machining centre.**

**3x pieces available : 1x 2013 & 2x 2014.**

- CNC control : SIEMENS 840D solution line with 10,4" TFT colour screen.
- Operating hours approx. 32.500 AN / spindle 14.500 hours.

#### Technical data:

- Travels - Direct path measuring system in all axes:
  - X-axis: 630 mm
  - Y-axis: 400 mm
  - Z-axis: 360 mm
  - Rapid traverse speed: 75/ 75/ 75 m/min
  - NC rotary table, type ATU 200 4th axis
    - Repeat accuracy +/- 8
    - Bridge dimension 800 mm
    - Swivel radius 285 mm
    - Face plate Ø 225 mm
- Main spindle drive with 2x AC motors:
  - Speed each up to: 12,000 min<sup>-1</sup>
  - 9.5 kW at 100% ED
  - 14.0 kW at 15% ED
  - Torque: max. 90 Nm
  - Spindle distance in: X-axis 320 mm
  - Coolant system / IKZ: 70 bar in 7 different pressure stages
  - Steel E335
    - Drilling capacity: 2 x Ø 36 mm
    - Thread cutting: 2 x M 24
    - Milling capacity: 2 x 150 cm<sup>3</sup>/min
- Tool changer Automatic:
  - Tool places: 2 x 32
  - Tool shank: HSK-A 63 DIN 69893
  - Tool Ø: max. 78 mm
  - Tool-Ø with free neighbouring places: max. 140 mm
  - Tool length: max. 300 mm
  - Tool weight: max. 5.0 kg
  - Tool change time: approx. 0.9 s (depending on control)
  - Chip to chip time: approx. 2.4 s (depending on control)
- Mini handwheel
- Flush gun
- Chip conveyor: 320 l
- Extinguishing system Waterfog (Minimax)
- Machine preparation for central coolant system
- Suction connection
- Tub rinsing
- Coolant package
- Hydraulic connection for 200 bar
- Operating instructions
- Renishaw probe package OMP 40-2LS
- Monitoring system as well as
  - MCIS DNC
  - Remote diagnostics and teleservice
  - V24 interface
  - Universal interface RS 232C
- Machine colour:

- light grey according to NCS S1502-B
- blue according to NCS S2050-R80B
- basalt grey according to RAL 7012
- Mains connection:
  - Supply voltage machine 3x400 Volt  $\pm$  10%
  - Voltage socket 230 Volt  $\pm$  10%
  - 30 kVA

---

## CHIRON 15 Series:

The 15 Series Machining Centers are best in class for speed, compact design and reliability. They have huge reserves for highly productive grinding and thanks to their modular design, for example with several spindle and table versions, they can be configured to create the perfect individual solution. Choose them for consistently fast processing and high availability with low unit costs.

Single- and double-spindle machines can be equipped with a chain-type tool changer to process complex workpieces with many tools. Alternatively, the body tool changer is currently the fastest tool change system on the market, ideal for high precision machining of countersunk holes. The FZ/DZ 15 W with load changer for loading and unloading while the machine is running are experts in large quantities, as is the TZ 15 W with four powerful spindles and workpiece changer.

## CHIRON 15 Highlights

- Fast, productive machining
- Reliable performance
- Compact machine layout
- Vertical traveling column
- Mineral casting machine bed
- High rigidity and thermal stability
- Dynamic direct drives and precision guides
- High running, positioning, and long-term precision
- Robust CHIRON rotary axes
- Fully enclosed working area, stainless steel covers
- Ideal chip flow directly into the chip feeder
- Ergonomic operating and loading concept
- Easy access to all units for servicing

## Technical Data:

## Technical Data:

Control:

[SINUMERIK 840D](#)

Machine Hours:

32.500 hrs.

Spindle Hours:

14.500 hrs.

Spindle Speed:

12.000 rpm

Tool Holder:

## HSK-A63

Tool Capacity:

32 x

### **Travels:**

X-Axis:

630 mm

Y-Axis:

400mm

Z-Axis:

360 mm

### **Dimensions and Weight:**

Height:

3.040 mm

Width:

3.700 mm

Length:

3.550 mm

Weight:

9.200 kg

### **Buyer Information:**

Condition:

Very good condition

Availability:

Immediately

Sold as:

EXW (Ex Works - Incoterm)

VAT:

19 %

Buyers Premium:

18 %

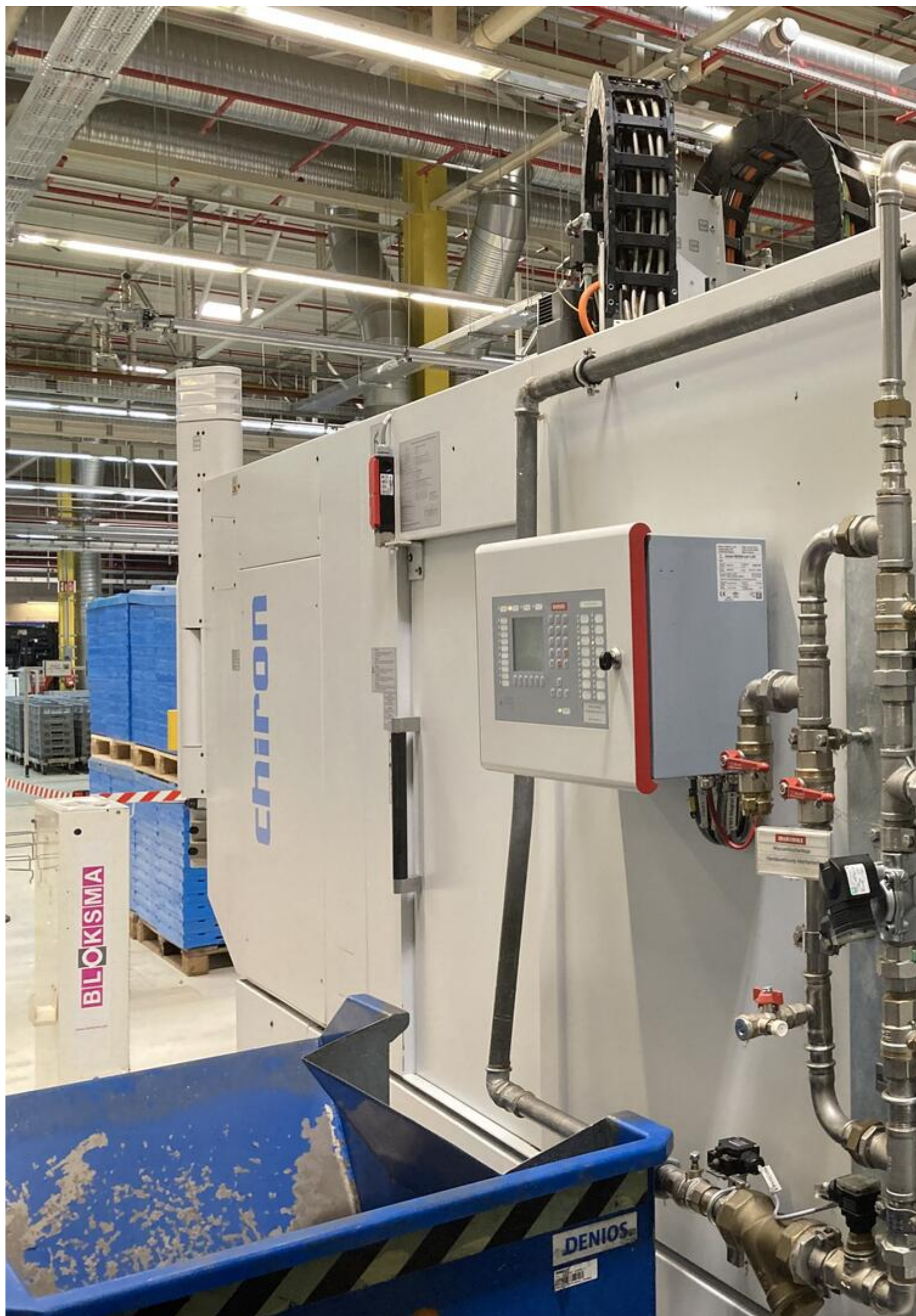
Location:

Germany

















+  
**CHIRON-WERKE**  
**GmbH & Co. KG**  
**D-78532 TUTTLINGEN**  
**Kreuzstraße 75**  
 Type **DZ15 SM HS**  
 Nr. **1**  
 Baujahr /  
 Gewicht **2014 / 9600 kg**  
**MADE IN GERMANY**

1129701

Stromart	Kind of current	Mode d'alimentation	Alimentazione
Betriebsspannung	Working voltage	Tension de service	Tensione d'esercizio
Steuerspannung	Control voltage	Tension de commande	Tensione di controllo
max. Kurzschlussstrom	max. Short-circuit current	max. Courant de court-circuit	max. Corrente di cortocircuito
Leistung	Power	Puissance	Potenza
Nennstrom	Rated current	Intensité nominale	Corrente nominale
Sicherung	Fuse	Fusible	Fusibile
Stromlaufplan	Circuit diagram	Schéma électrique	Schema elettrico



6000 h

6

4

25

2000 h

2

6

18-21

24

14-17

23

22

10-13

7

8

250 h

2

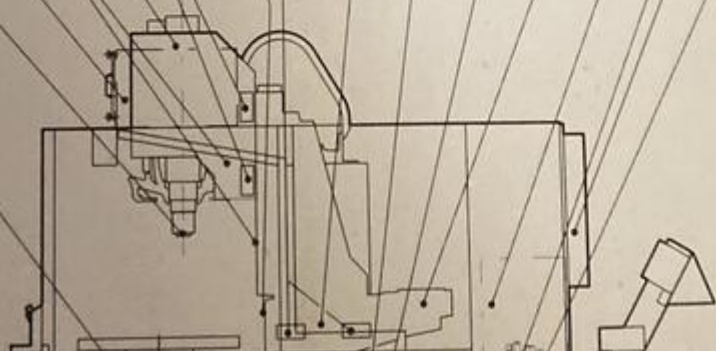
5

3

4

24 h

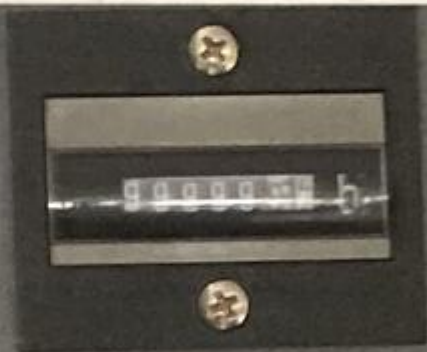
1







CE



**ACHTUNG**  
 Maschine mit geschlossenem Arbeitsraum nur mit einer ausreichend dimensionierten Absauganlage betreiben.

**ATTENTION**  
 Use an mist collector of sufficient capacity if operating the machine in an enclosed working area.

**ATTENTION**  
 Ne faire fonctionner la machine avec l'espace de travail fermé qu'avec une unité d'aspiration suffisamment dimensionnée.

**ATTENZIONE**  
 Usare il centro di lavoro con zona di lavoro chiusa solo con un impianto di aspirazione ben dimensionato.

**ATENCIÓN**  
 Hacer funcionar la máquina con zona de trabajo cerrada solo con una instalación de aspiración suficientemente dimensionada.



**0Q1**

**HAUPTSCHALTER**  
 ACHTUNG: Bei ausgeschaltetem Hauptschalter ist nicht der gesamte Schrank spannungslos. Vorarbeiten ausschalten.

Die Maschine darf nur von  
 und autorisierten Personen

Jede Person die mit der Aufstellung,  
 Inspektion des Fertigungszentrums  
 und die Sicherheitsvorschriften

The machine may only  
 authorized personnel.

The personnel instructed to install  
 machining centre must have read  
 and safety regulations.

Seules des personnes  
 utiliser la machine.

Toute personne s'occupant de l'  
 inspection du centre d'usinage  
 et les prescriptions de sécurité.

La macchina deve essere  
 unicamente da personale  
 ed autorizzato.

Ogni persona incaricata dell'  
 della riparazione e dell'ispezione  
 attentamente e capire le istruzioni.

La máquina solamente  
 especialmente instruido.

Cada persona, que se ocupa  
 reparación y de la inspección  
 y entendido la instrucciones



Asset-Trade

Assessment and Sale of Used Assets world wide

Am Sonnenhof 16

47800 Krefeld

Germany

Tel.: +49 2151 32500 33

Fax.: +49 2151 65 29 22

Email: [info@asset-trade.de](mailto:info@asset-trade.de)

Web.: <https://www.asset-trade.de/en>

Generated on 15.12.2025

© Copyright 2025 - [Asset-Trade](#)

Page