

Image not found or type unknown



Ref. No.:

1347-12021015

Overview and Technical Data:

MTU 6V396TC42 with AvK DKBN80/500-4TS Generator 500 kVA

NOT DEFINED



Multiple Makes or Not Defined

Year of Build:

Jan 1987

Description:

Used emergency generator for sale

MTU 6V 396 TC 42 with AvK (A. van Kaick) DKBN80/500-4TS generator 500 kVA

Commissioning: 1987

Technical data:

- Engine Manufacturer: MTU

- Engine type: 6V 396 TC 42
- Engine power: 440 kW /21500 1/min
- Generator Manufacturer: AvK (A. van Kaick)
- Generator type: DKBN80/500-4TS
- Generator power: 500 kVA

Further data on request

MTU is one of the world's leading manufacturers of large diesel engines and complete propulsion systems. The wide product range includes diesel engines and propulsion systems for ships, heavy agricultural, rail and military vehicles as well as for the oil and gas industry. MTU has consistently delivered innovation and is at the forefront of technological advancement.

- Switchgear - Type : Emergency switchgear N2-800/00+3+3
- Mains parallel operation with re-synchronisation
- and sprinkler operation d
- Rated power : 500kVA
- Rated voltage : 400/231V
- Frequency : 50Hz
- Rated current : 722A
- Control voltage : 24V DC
- Protection class : IP42
- Regulation : VDE 0100-718

The switchgear is designed for operation with one generator and mains. Please refer to the cover sheet of these instructions for the nameplate data (nominal values).

The system may only be operated with the specified nominal data. A transfer synchronisation to the mains or to the generator is provided.

Technical Data:

Technical Data:

Control:

[CNC](#)

Machine Hours:

333

Buyer Information:

Condition:

[Very good condition](#)

Available:

[Q1](#)

Sold as:

[EXW \(Ex Works - Incoterm\)](#)

VAT:

[19 %](#)

Buyers Premium:

[16 %](#)

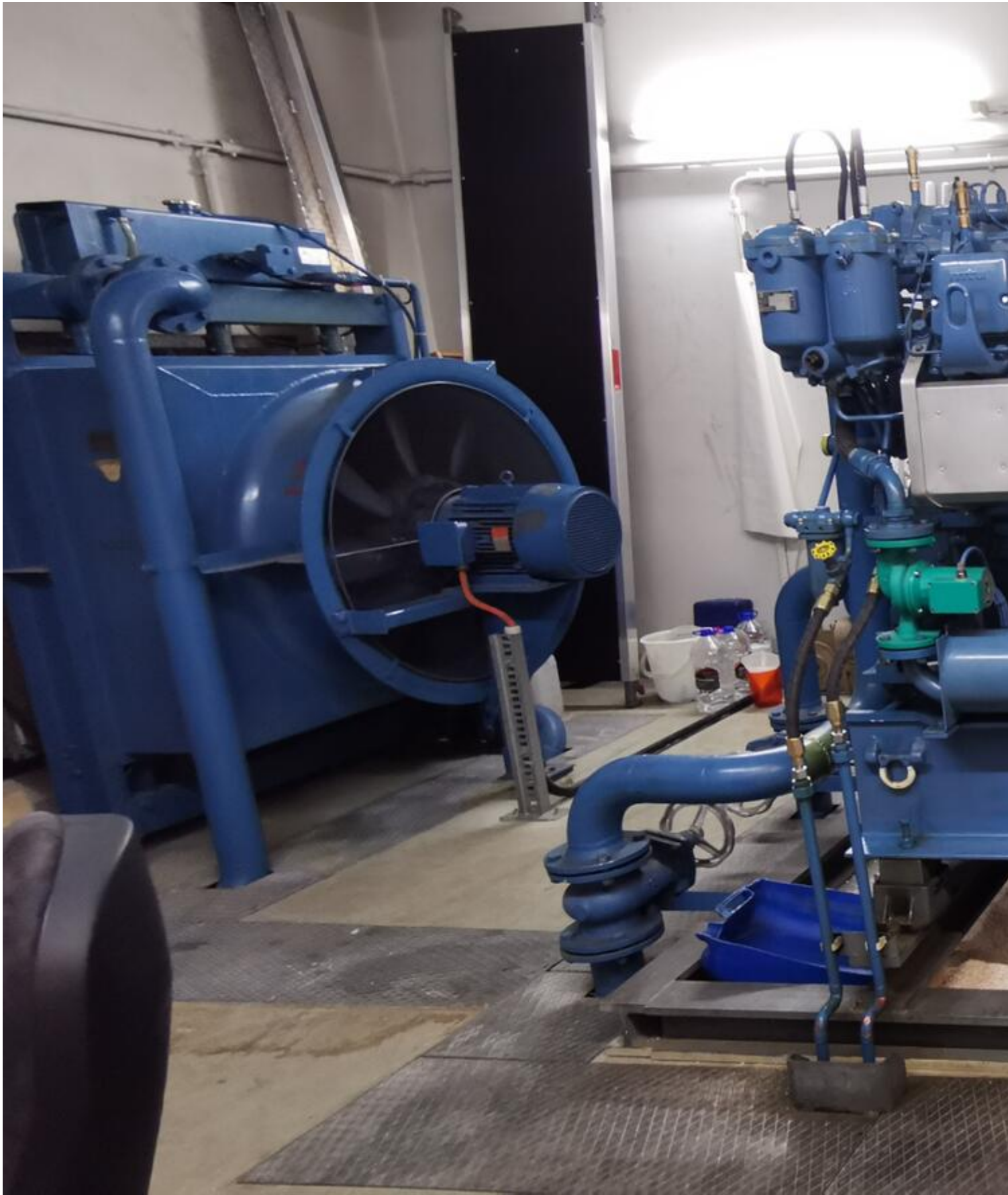
Location:

Germany

Images:



1

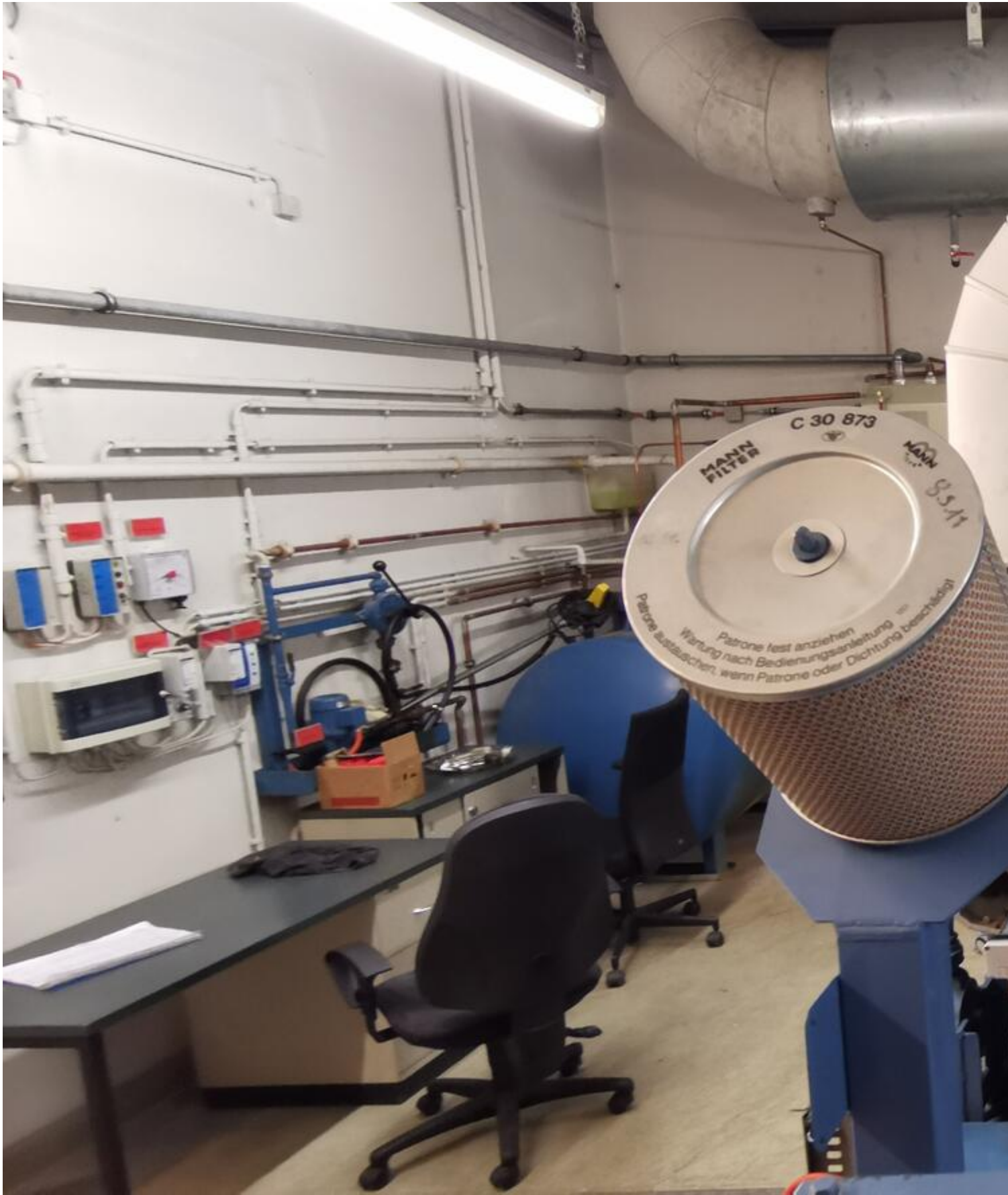


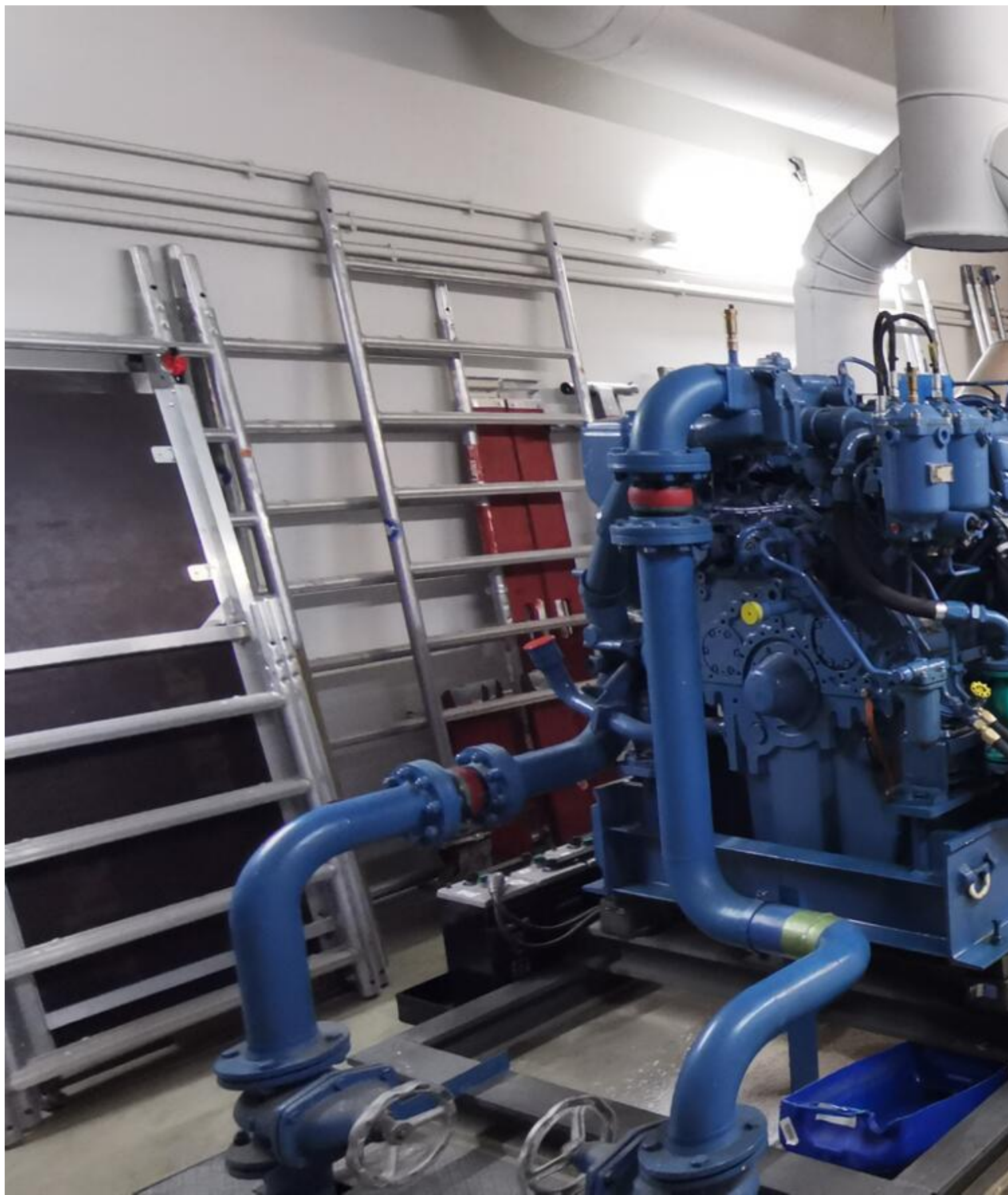
2













Drehrichtung rechts
Direction of rotation right

**Lüfter drehrichtungs-
abhängig**

Fan dependant on direction
of rotation

Phasenfolge
Phase-sequence
UVW



AvK

Synchron Generator
Synchronous

400/231Y

722

500

Drehrichtung
Rot. Direction

Erregung
Excitation

Isol. Klasse
Insul. Class

Hilfserregung
Aux. Excitation

COS 1147

Nachschmierfrist
Lubrication of bearing

Lithiumfett Typ:
Lithium grease typ:

NLGI K







Motordrehzahl



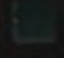
Ausnahme nur, wenn so nicht möglich,
max. 5 Minuten bei 0-Last


 Überwachung ein

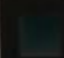
 Automatik gesperrt

 Startkontrolle

 Störung

 Sprinkl

 Feh

 Nachkühlla

 Batterie Un

+ 207kVA GEN.
+ 207kW 0.99 CF


 PRG












OFF

MANUAL

AUTO

TEST

START

T





Asset-Trade

Assessment and Sale of Used Assets world wide

Am Sonnenhof 16

47800 Krefeld

Germany

Tel.: +49 2151 32500 33

Fax.: +49 2151 65 29 22

Email: info@asset-trade.de

Web.: <https://www.asset-trade.de/en>

Ref. No.:
1347-12021015

Overview and Technical Data:

MTU 6V396TC42 with AvK DKBN80/500-4TS Generator 500 kVA

NOT DEFINED



Multiple Makes or Not Defined

Year of Build:
Jan 1987

Description:

Used emergency generator for sale

MTU 6V 396 TC 42 with AvK (A. van Kaick) DKBN80/500-4TS generator 500 kVA

Commissioning: 1987

Technical data:

- Engine Manufacturer: MTU
- Engine type: 6V 396 TC 42
- Engine power: 440 kW /21500 1/min
- Generator Manufacturer: AvK (A. van Kaick)
- Generator type: DKBN80/500-4TS
- Generator power: 500 kVA

Further data on request

MTU is one of the world's leading manufacturers of large diesel engines and complete propulsion systems. The wide product range includes diesel engines and propulsion systems for ships, heavy agricultural, rail and military vehicles as well as for the oil and gas industry. MTU has consistently delivered innovation and is at the forefront of technological advancement.

- Switchgear - Type : Emergency switchgear N2-800/00+3+3
- Mains parallel operation with re-synchronisation
- and sprinkler operation d
- Rated power : 500kVA
- Rated voltage : 400/231V
- Frequency : 50Hz
- Rated current : 722A
- Control voltage : 24V DC
- Protection class : IP42
- Regulation : VDE 0100-718

The switchgear is designed for operation with one generator and mains. Please refer to the cover sheet of these instructions for the nameplate data (nominal values).

The system may only be operated with the specified nominal data. A transfer synchronisation to the mains or to the generator is provided.

Technical Data:

Technical Data:

Control:

[CNC](#)

Machine Hours:

333

Buyer Information:

Condition:

[Very good condition](#)

Available:

[Q1](#)

Sold as:

[EXW \(Ex Works - Incoterm\)](#)

VAT:

[19 %](#)

Buyers Premium:

[16 %](#)

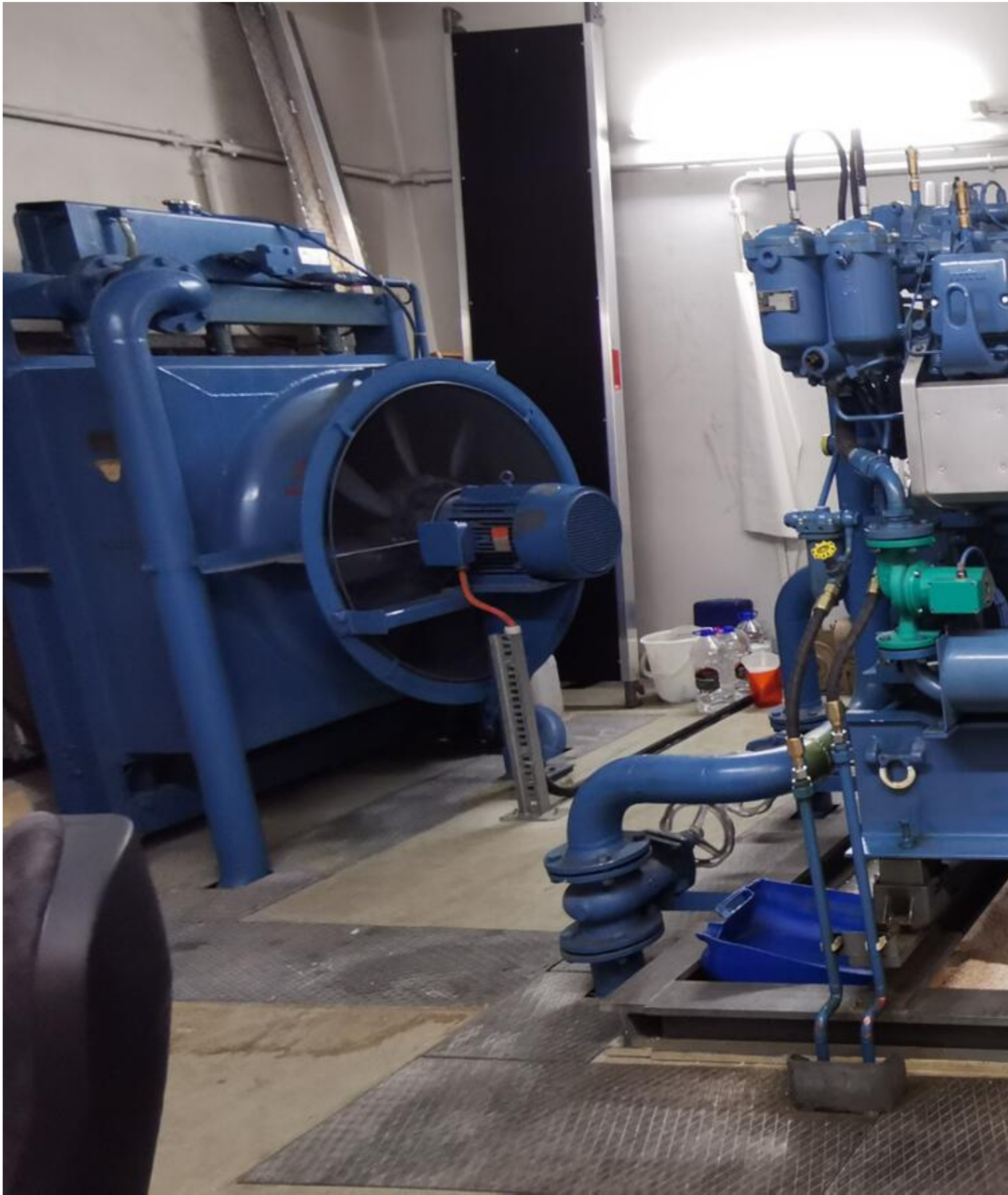
Location:

Germany

Images:



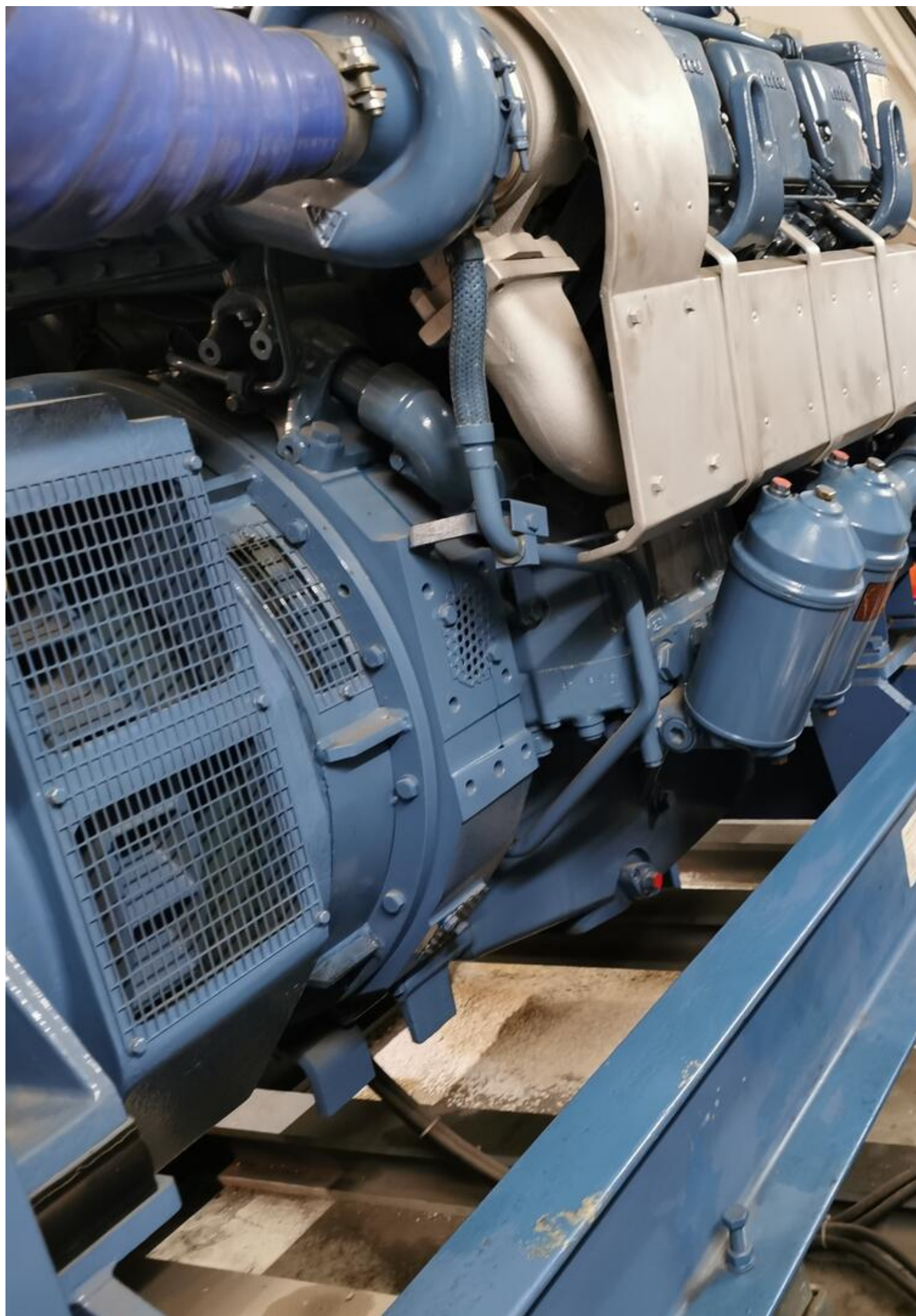
1



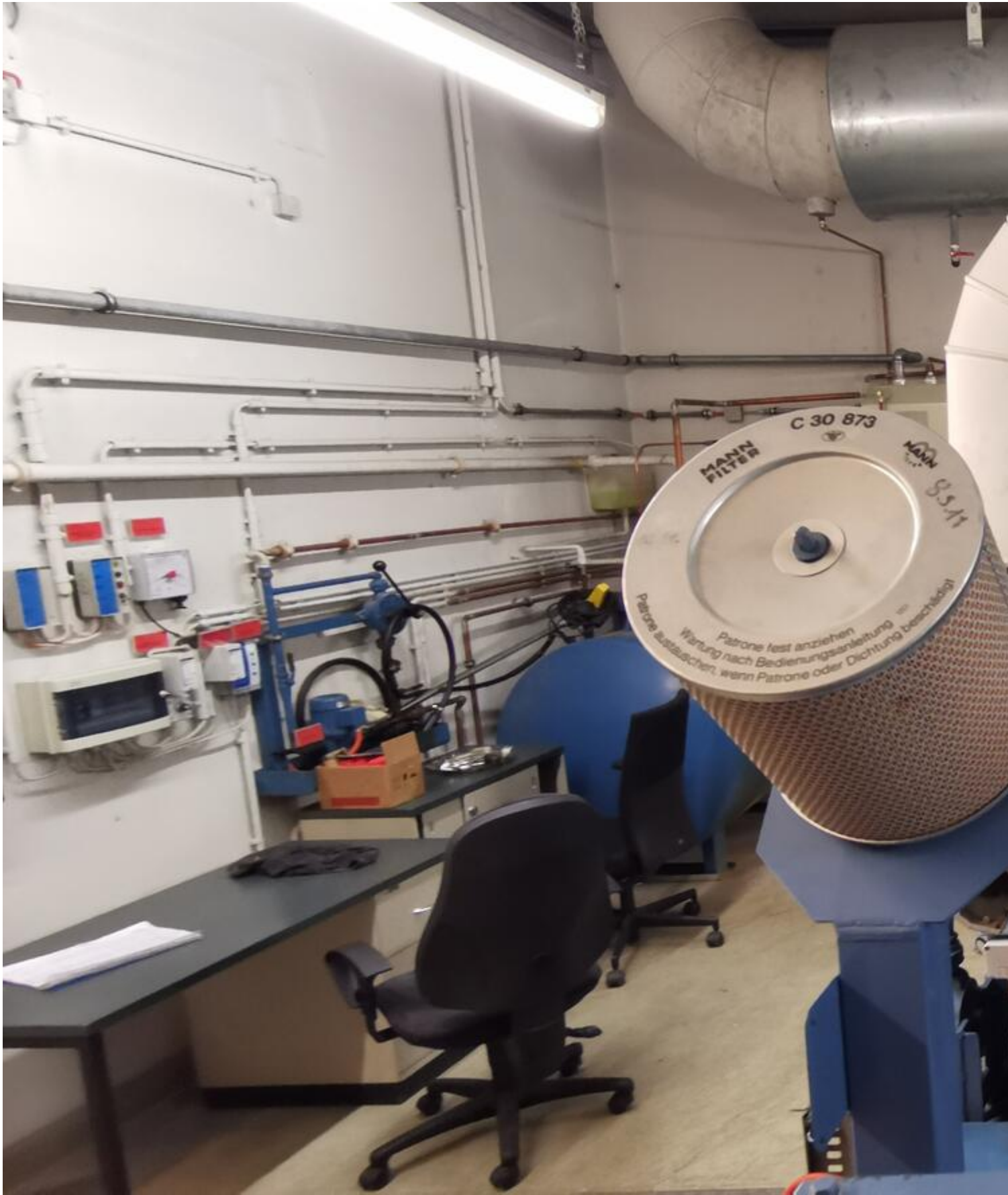
2



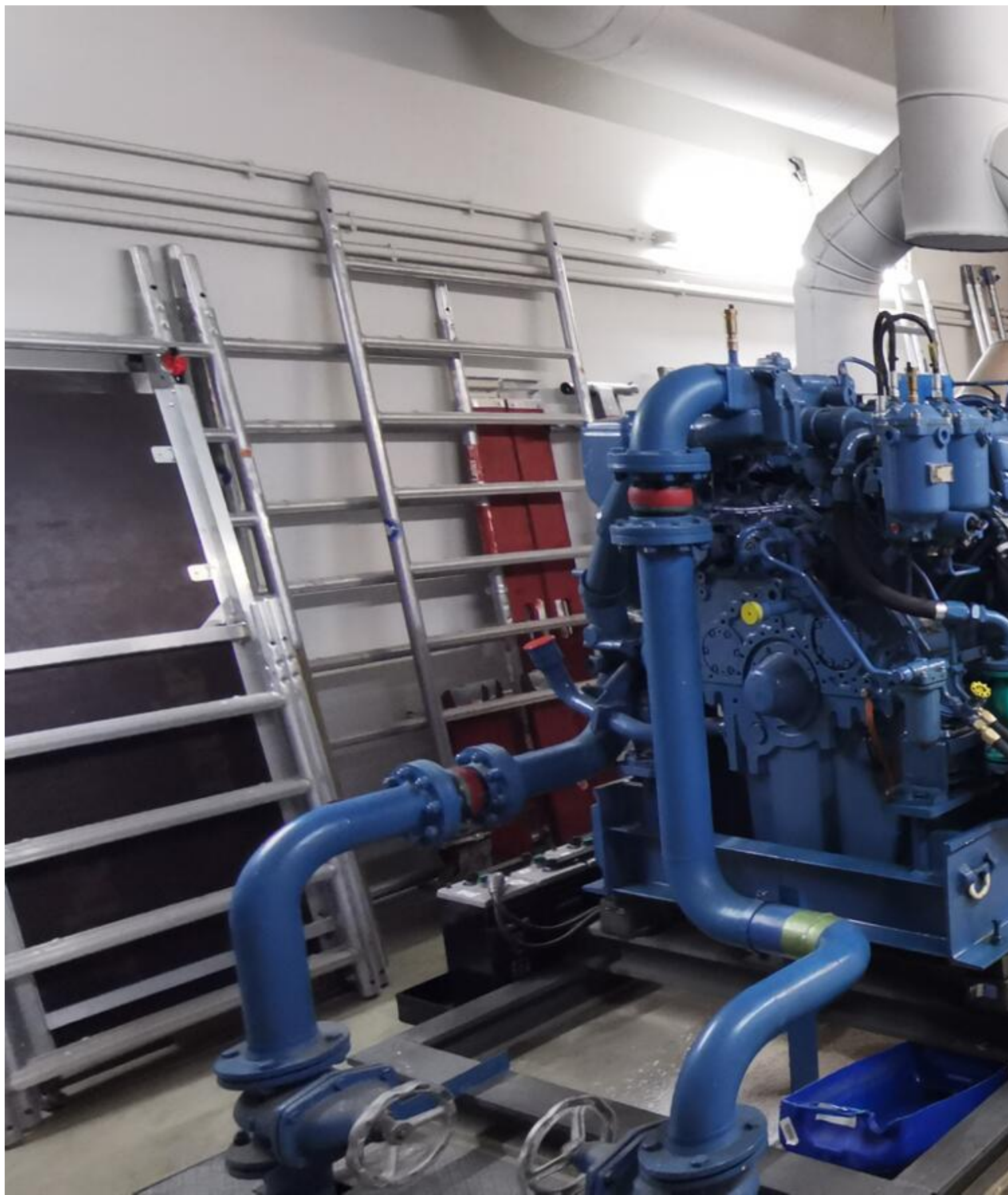




5



6





Drehrichtung rechts
Direction of rotation right

**Lüfter drehrichtungs-
abhängig**

Fan dependant on direction
of rotation

Phasenfolge
Phase-sequence
UVW



AvK

Synchron Generator
Synchronous

400/231Y

722

500

Drehrichtung
Rot. Direction

Erregung
Excitation

Isol. Klasse
Insul. Class

Hilfserregung
Aux. Excitation

COS 1147

Nachschmierfrist
Lubrication of bearing

Lithiumfett Typ:
Lithium grease typ:

NLGI K







Motordrehzahl




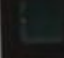
Ausnahme nur, wenn so nicht möglich,
max. 5 Minuten bei 0-Last

 Überwachung ein

 Automatik gesperrt

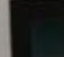
 Startkontrolle

 Störung

 Sprinkl

 Feh

 Nachkühlla

 Batterie Un

+ 207kVA GEN.
+ 207kW 0.99 CF


 PRG












OFF

MANUAL

AUTO

TEST

START

T





Asset-Trade

Assessment and Sale of Used Assets world wide

Am Sonnenhof 16

47800 Krefeld

Germany

Tel.: +49 2151 32500 33

Fax.: +49 2151 65 29 22

Email: info@asset-trade.de

Web.: <https://www.asset-trade.de/en>

Generated on 26.12.2025

© Copyright 2025 - [Asset-Trade](#)

Page