



# Asset-Trade

Assessment & Sale of Used Assets

Ref. No.: 1409-03011117

## Overview and Technical Data:

**EISENMANN - Electrostatic Paint Line for  
Automotive Parts**

**EISENMANN**

**EISENMANN**

Year of Build: Jan 2018



# Asset-Trade

Assessment & Sale of Used Assets



## Description:

### **Used EISENMANN Electrostatic Paint Line for Automotive Parts**

installed between 2017-2018 – the line ran semi periodically to paint Automotive Shock Absobers

#### Technical Data:

- Max Throughput: 1,800 Pieces per hour
- Conveyor Speed: 5.25 Meters per minute
- Max Weight Throughput: 18,000 kg/39,683 lbs per hour
- Supply Voltage: 480/120V – 60Hz
- Total Connected Load: 848 kVA
- More Specifications on Request



## Technical Data:

### Technical Data:

Control: CNC

### Buyer Information:

Condition: Like New

Available: Immediately

Sold as:

EXW (Ex Works - Incoterm)

VAT: 19 %

Buyers Premium: 18 %

Location: United States



## Images:



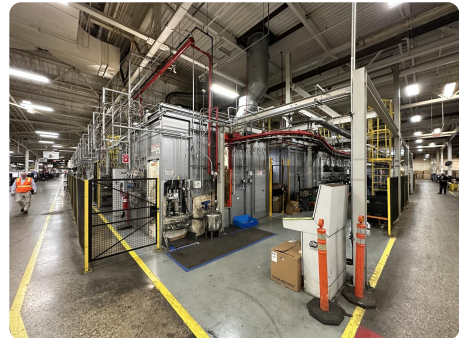
1



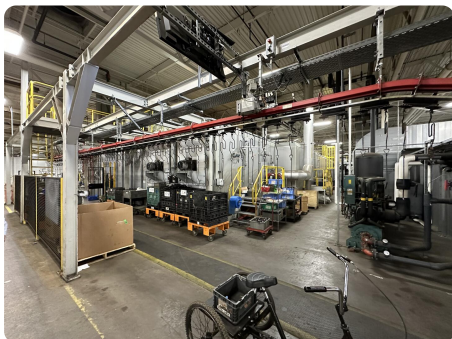
2



3



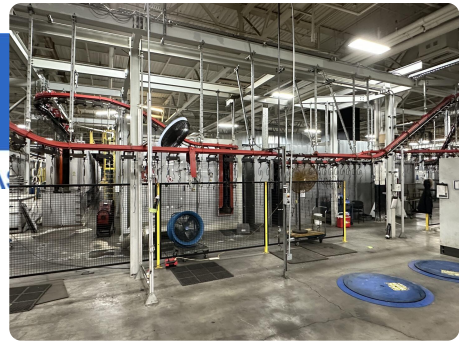
4



5



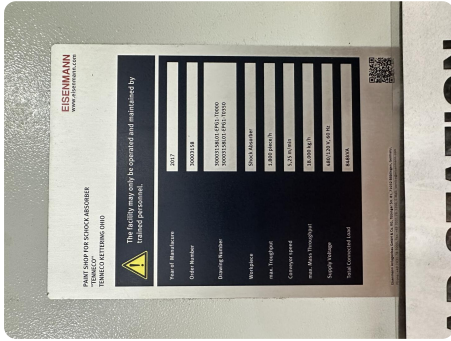
A



e

assets

6



7



# Asset-Trade

Assessment & Sale of Used Assets



**Asset-Trade**

**Assessment and Sale of Used Assets world  
wide**

**Am Sonnenhof 16**

**47800 Krefeld**

**Germany**

**Tel.: +49 2151 32500 33**