



Image not found or type unknown

Ref. No.:

1411-03181235

## **Overview and Technical Data:**

**KIEFEL KLS 76 /225 laminating line automotive cheap**

**[KIEFEL](#)**

**K**

**L**

**M**

**T**

**E**

Year of Build:  
Jan 2012

## Description:

# Buy used KIEFEL KLS 76 /225 forming and laminating line automotive

- Control Siemens
- Technology: IMG laminating

Technical data.

- Max punching force OT: 30 kN
- max. usable area: 760 x 2250 mm
- min. Usable area: 340 x 1200 mm
- max. part height: 220 mm
- Foil level: 1805 mm
- Direction of film passage: from left to right (operating side)
- Extraction capacity: 500 m³/h
- Compressed air consumption: 300 NI/cycle
- Operating pressure: 6 bar
- Operating voltage: 3x400N + PE 50Hz
- Connected load: 326 kVA
- Rated current 471 A
- Back-up fuse: 500A

Still under Power.

---

## KIEFEL Forming and Laminating Machines

Configurations are available for all the forming and laminating tasks involved in the manufacture or finishing of interior- or exterior-trim components in various materials.

Whether for door linings, A-, B-, and C-columns, shelves, consoles or coated film materials. Customers can count on optimised matching to their individual requirements.

The 2012 Kiefel model KLS 76/266 is a powerful machine that can help produce high-quality IMG laminated car doors. With a maximum punching force of 30 kN and a usable area ranging from 340 x 1200 mm to 760 x 2250 mm, this machine is capable of handling a wide range of part sizes. The maximum part height is 220 mm and the foil level is 1805 mm. The direction of film passage is from left to right (operating side) and the extraction capacity is 500 m³/h. The compressed air consumption is 300 NI/cycle and the operating pressure is 6 bar. The operating voltage is 3x400N + PE 50Hz and the connected load is 326 kVA. The rated current is 471 A and the back-up fuse is 500A. All these technical features make the Kiefel model KLS 76/266 an excellent choice for producing high-quality IMG laminated car doors.

## Technical Data:

## Technical Data:

Control:

[SIEMENS](#)

## **Buyer Information:**

Condition:

[Very good condition](#)

Available:

[Immediately](#)

Sold as:

[EXW \(Ex Works - Incoterm\)](#)

VAT:

[19 %](#)

Buyers Premium:

[18 %](#)

Location:

Germany

## **Images:**























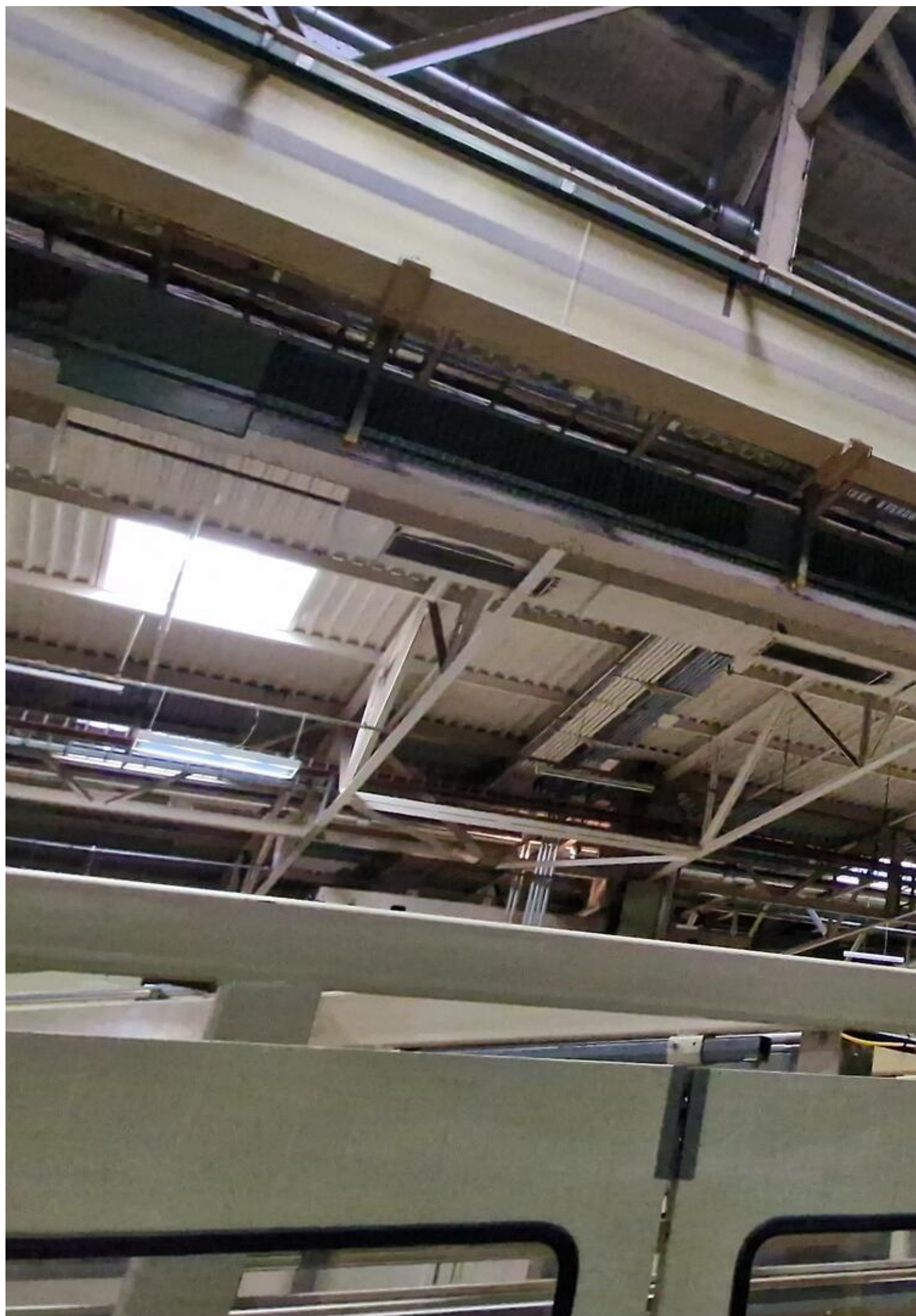












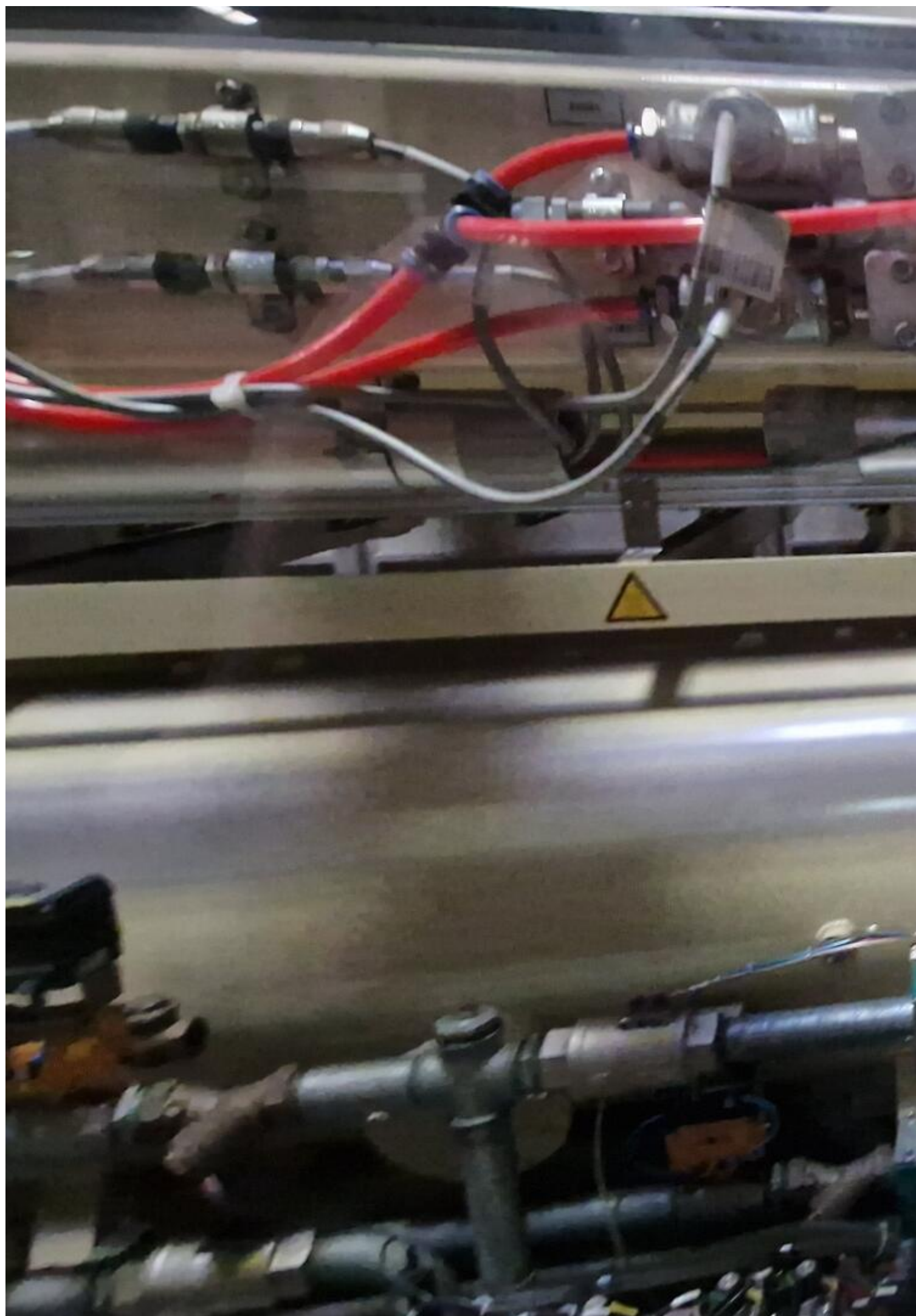




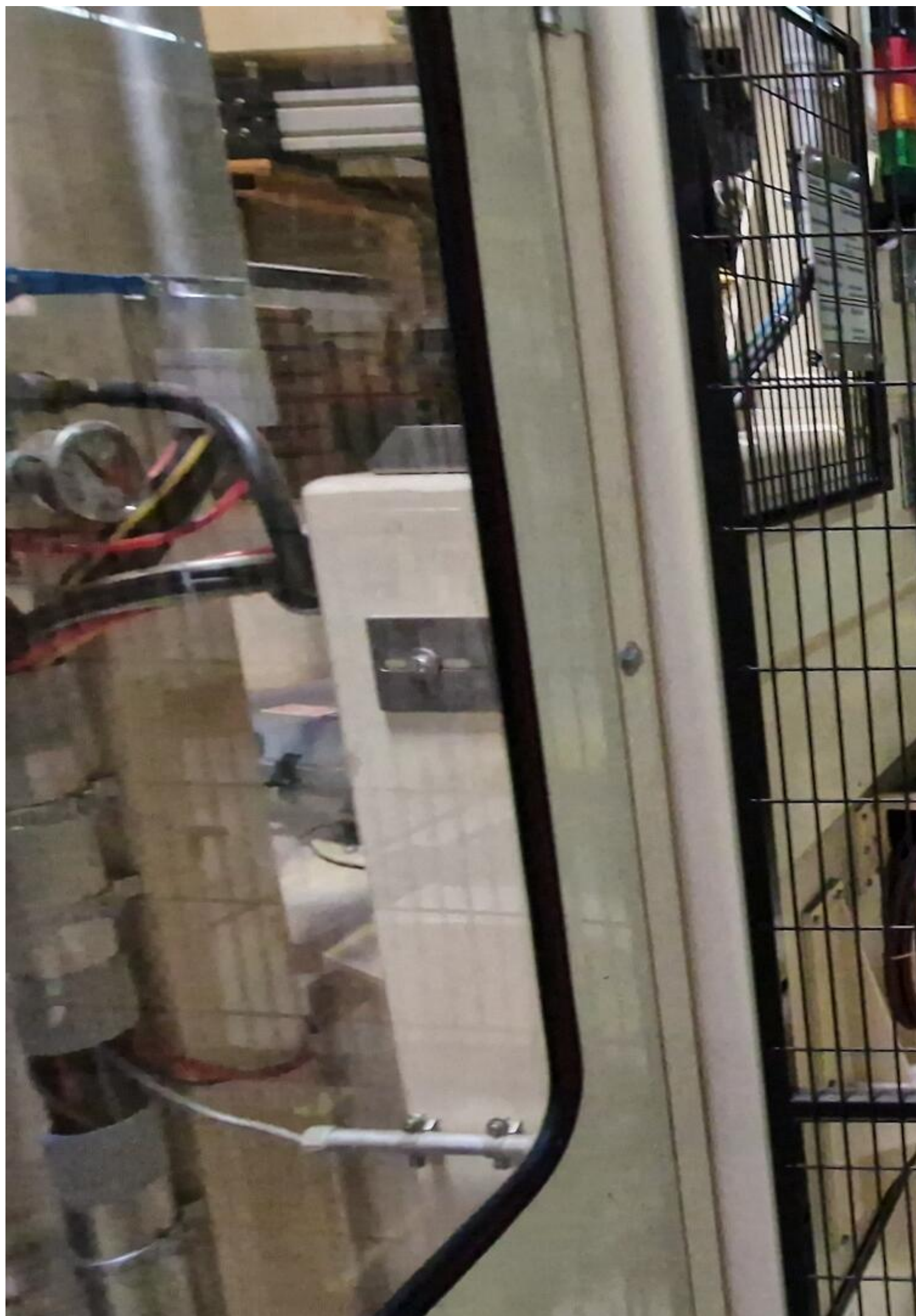






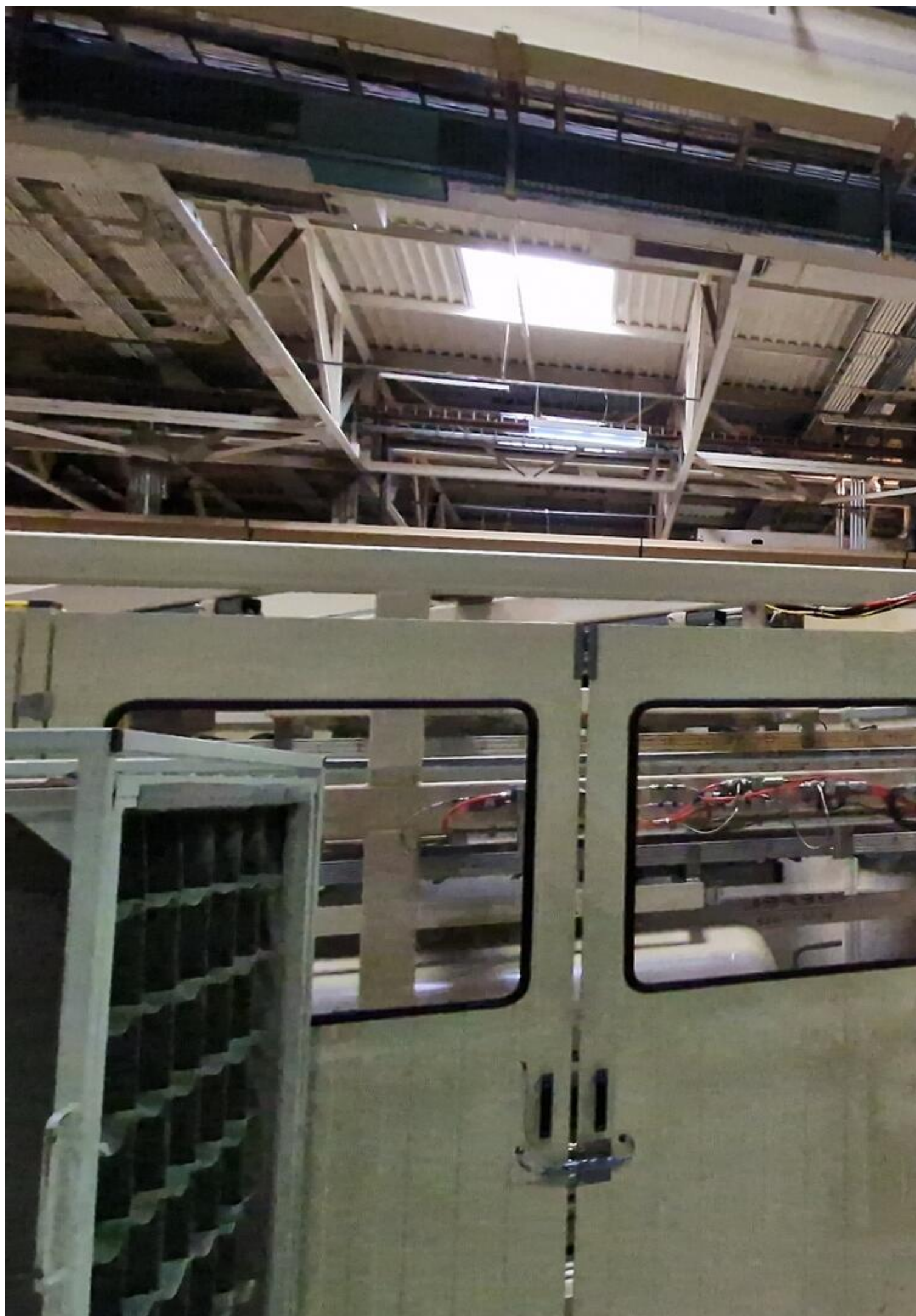






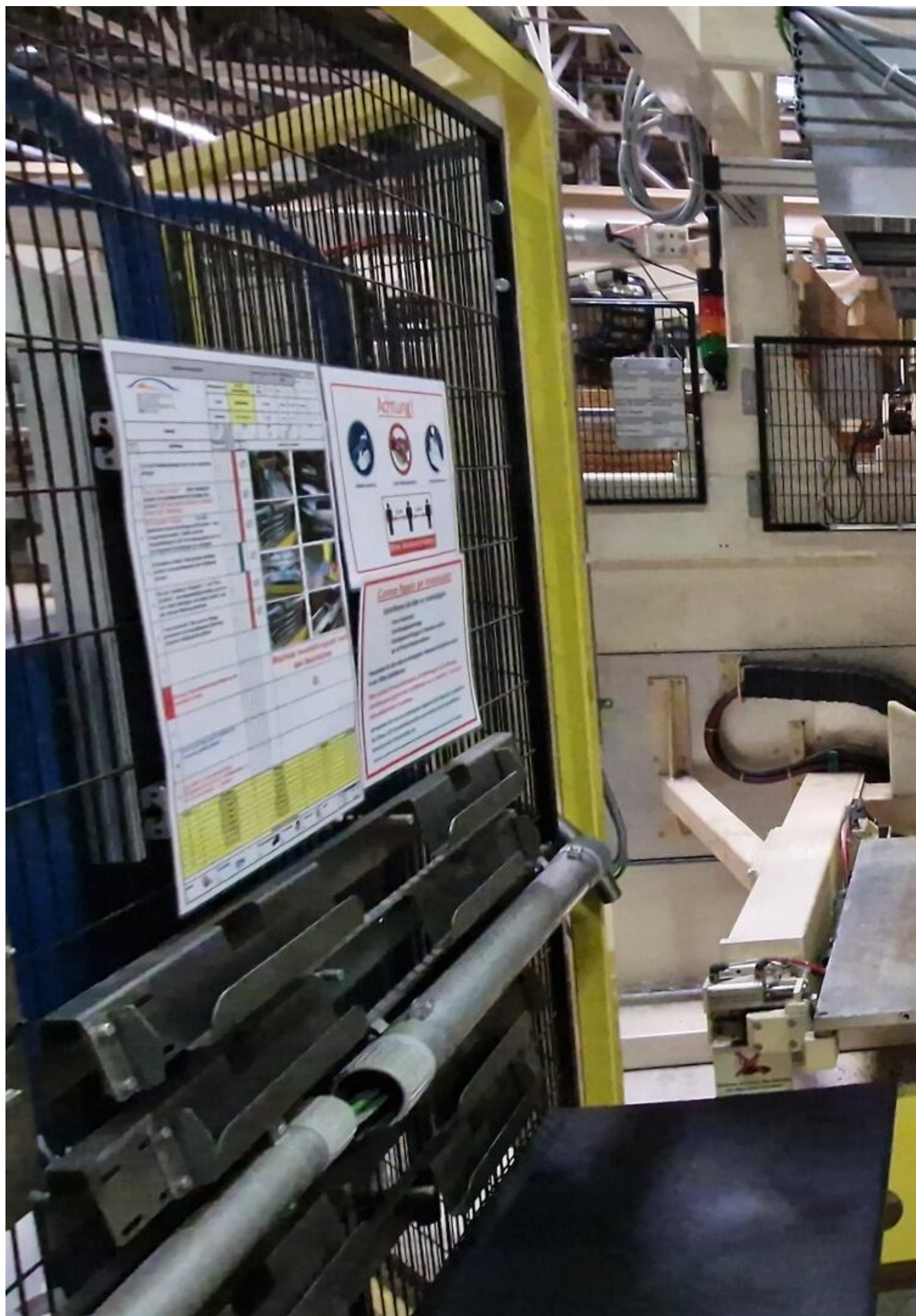






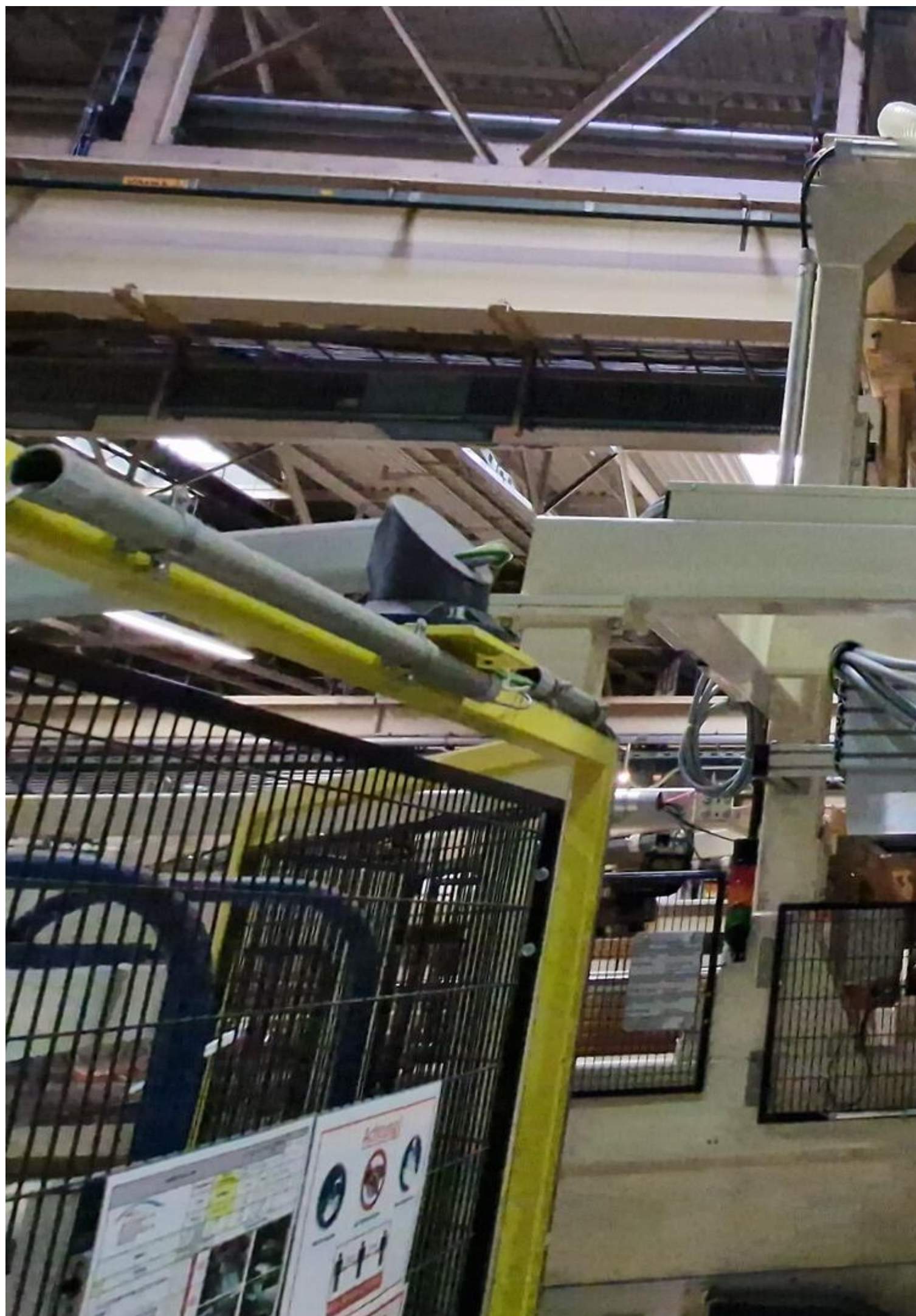












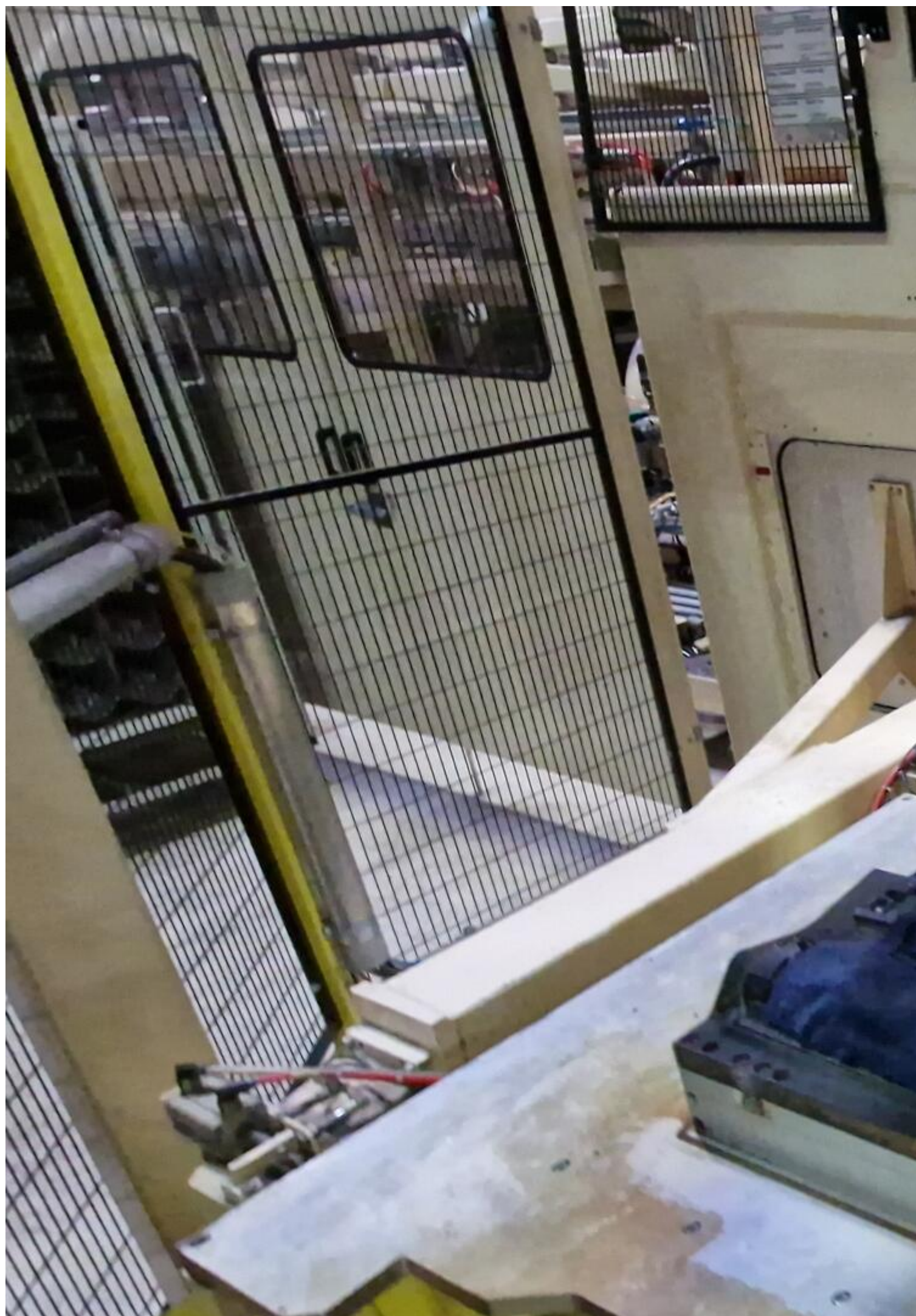


















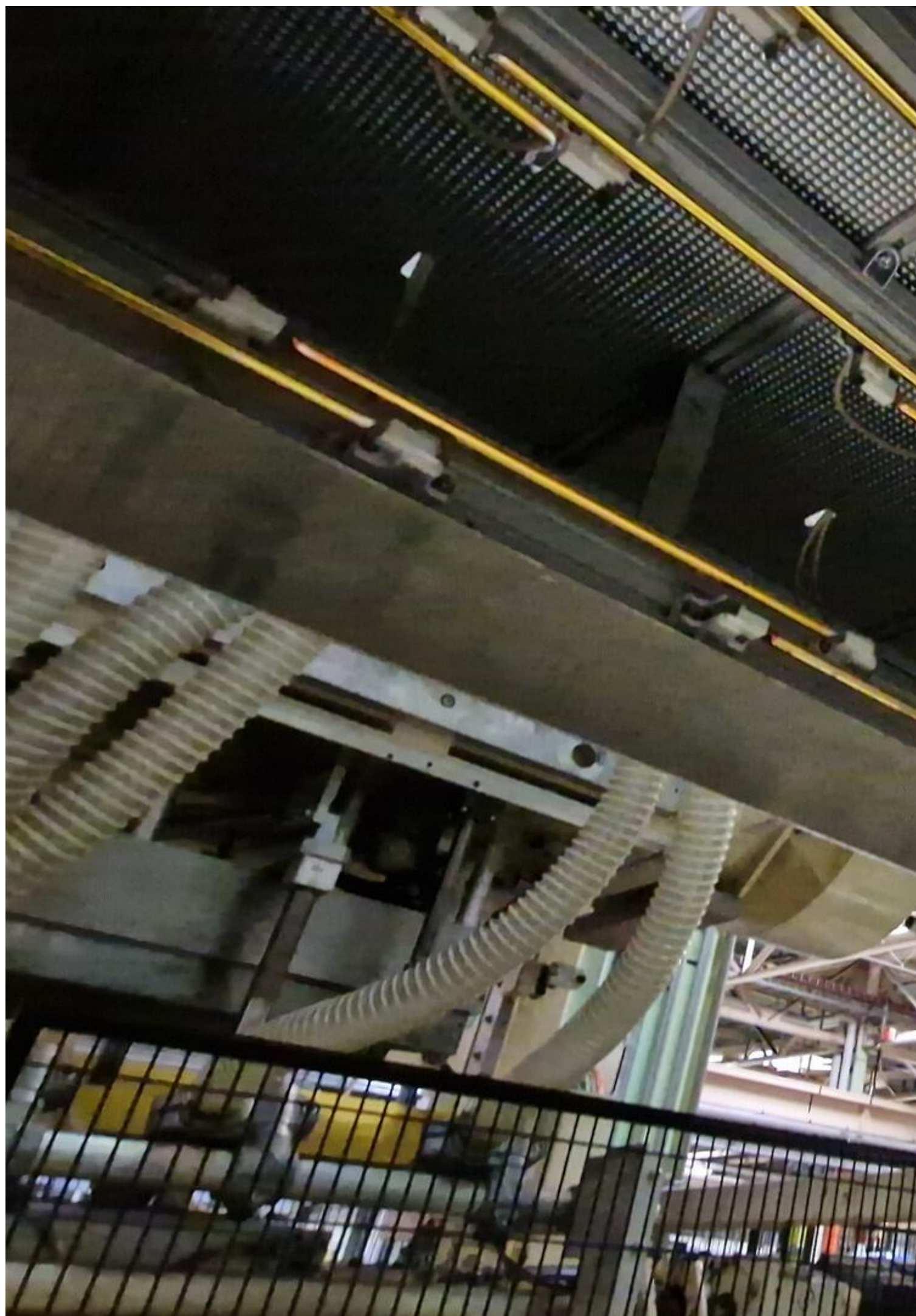
DIN EN ISO 13055  
S = 1000 mm  
T = 0,5 mm

F















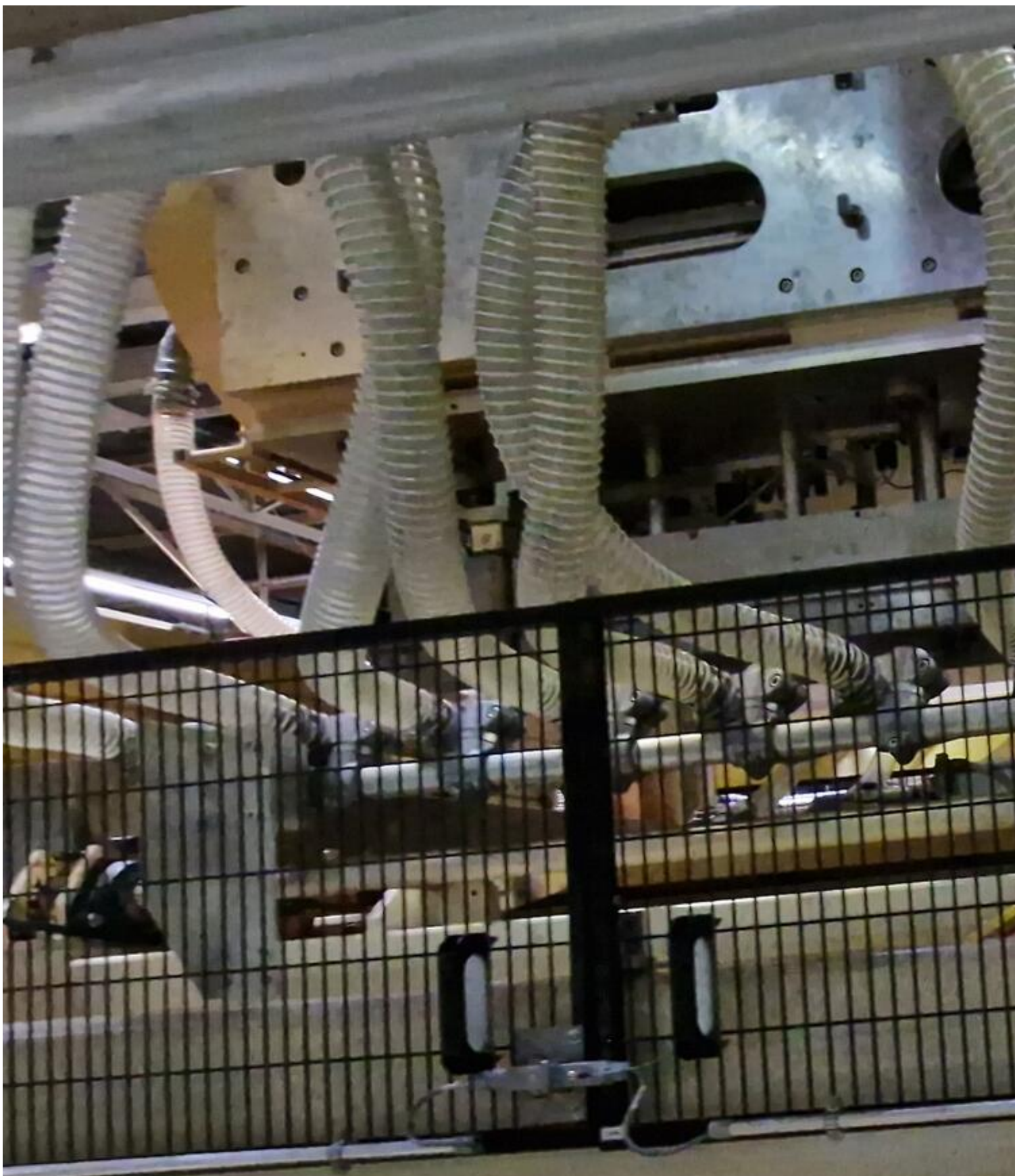












DIN EN ISO 13855  
S = 1000 mm  
T = 0,5 sek.







**Video:**



Asset-Trade

Assessment and Sale of Used Assets world wide

Am Sonnenhof 16

47800 Krefeld

Germany

Tel.: +49 2151 32500 33

Fax.: +49 2151 65 29 22

Email: [info@asset-trade.de](mailto:info@asset-trade.de)

Web.: <https://www.asset-trade.de/en>

Ref. No.:  
1411-03181235

### **Overview and Technical Data:**

**KIEFEL KLS 76 /225 laminating line automotive cheap**

**KIEFEL**

**K**

**L**

**M**

**T**

**E**



Year of Build:  
Jan 2012

## Description:

# Buy used KIEFEL KLS 76 /225 forming and laminating line automotive

- Control Siemens
- Technology: IMG laminating

Technical data.

- Max punching force OT: 30 kN
- max. usable area: 760 x 2250 mm
- min. Usable area: 340 x 1200 mm
- max. part height: 220 mm
- Foil level: 1805 mm
- Direction of film passage: from left to right (operating side)
- Extraction capacity: 500 m³/h
- Compressed air consumption: 300 NI/cycle
- Operating pressure: 6 bar
- Operating voltage: 3x400N + PE 50Hz
- Connected load: 326 kVA
- Rated current 471 A
- Back-up fuse: 500A

Still under Power.

---

## KIEFEL Forming and Laminating Machines

Configurations are available for all the forming and laminating tasks involved in the manufacture or finishing of interior- or exterior-trim components in various materials.

Whether for door linings, A-, B-, and C-columns, shelves, consoles or coated film materials. Customers can count on optimised matching to their individual requirements.

The 2012 Kiefel model KLS 76/266 is a powerful machine that can help produce high-quality IMG laminated car doors. With a maximum punching force of 30 kN and a usable area ranging from 340 x 1200 mm to 760 x 2250 mm, this machine is capable of handling a wide range of part sizes. The maximum part height is 220 mm and the foil level is 1805 mm. The direction of film passage is from left to right (operating side) and the extraction capacity is 500 m³/h. The compressed air consumption is 300 NI/cycle and the operating pressure is 6 bar. The operating voltage is 3x400N + PE 50Hz and the connected load is 326 kVA. The rated current is 471 A and the back-up fuse is 500A. All these technical features make the Kiefel model KLS 76/266 an excellent choice for producing high-quality IMG laminated car doors.

## Technical Data:

## Technical Data:

Control:

[SIEMENS](#)

## **Buyer Information:**

Condition:

[Very good condition](#)

Available:

[Immediately](#)

Sold as:

[EXW \(Ex Works - Incoterm\)](#)

VAT:

[19 %](#)

Buyers Premium:

[18 %](#)

Location:

Germany

## **Images:**























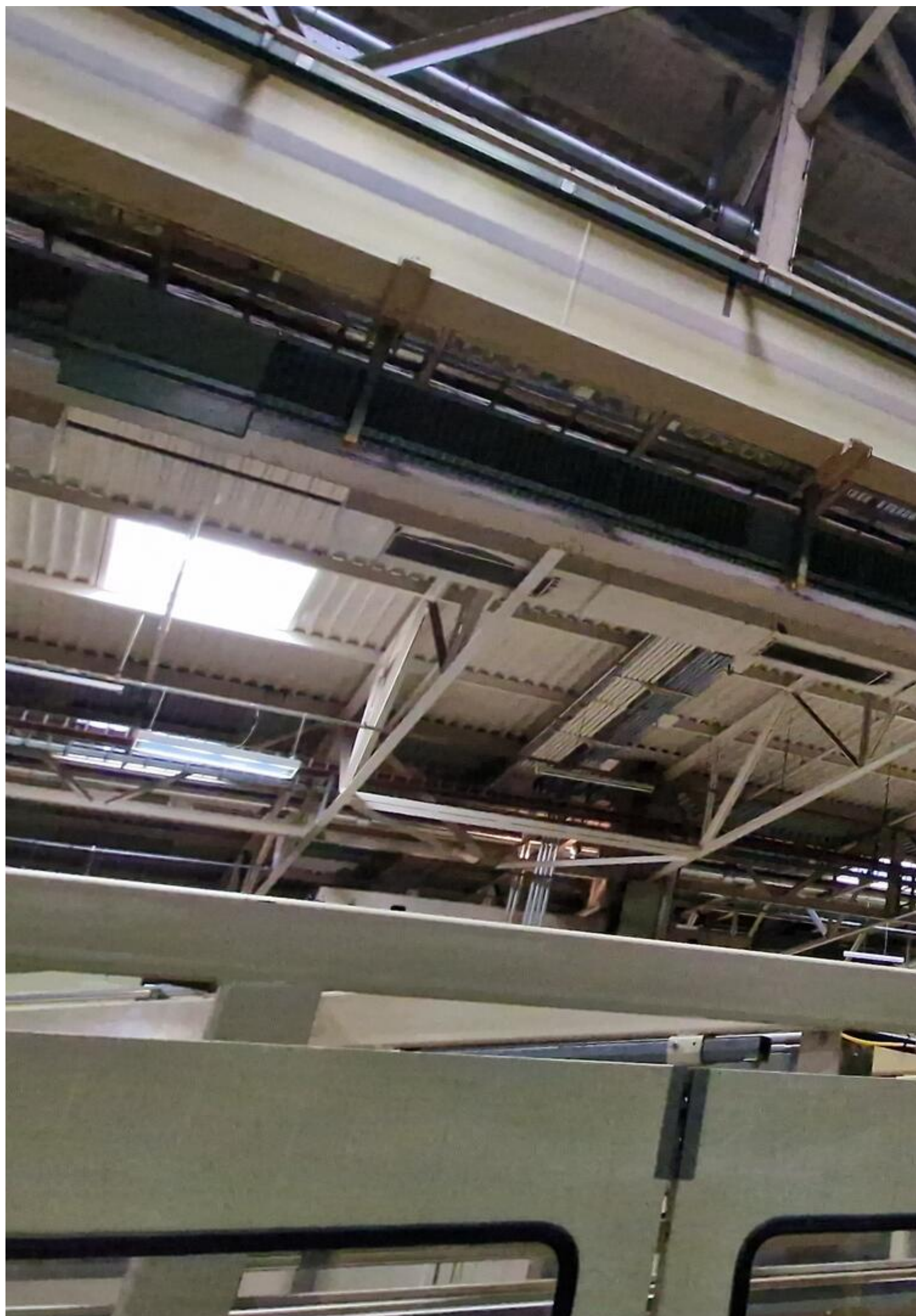












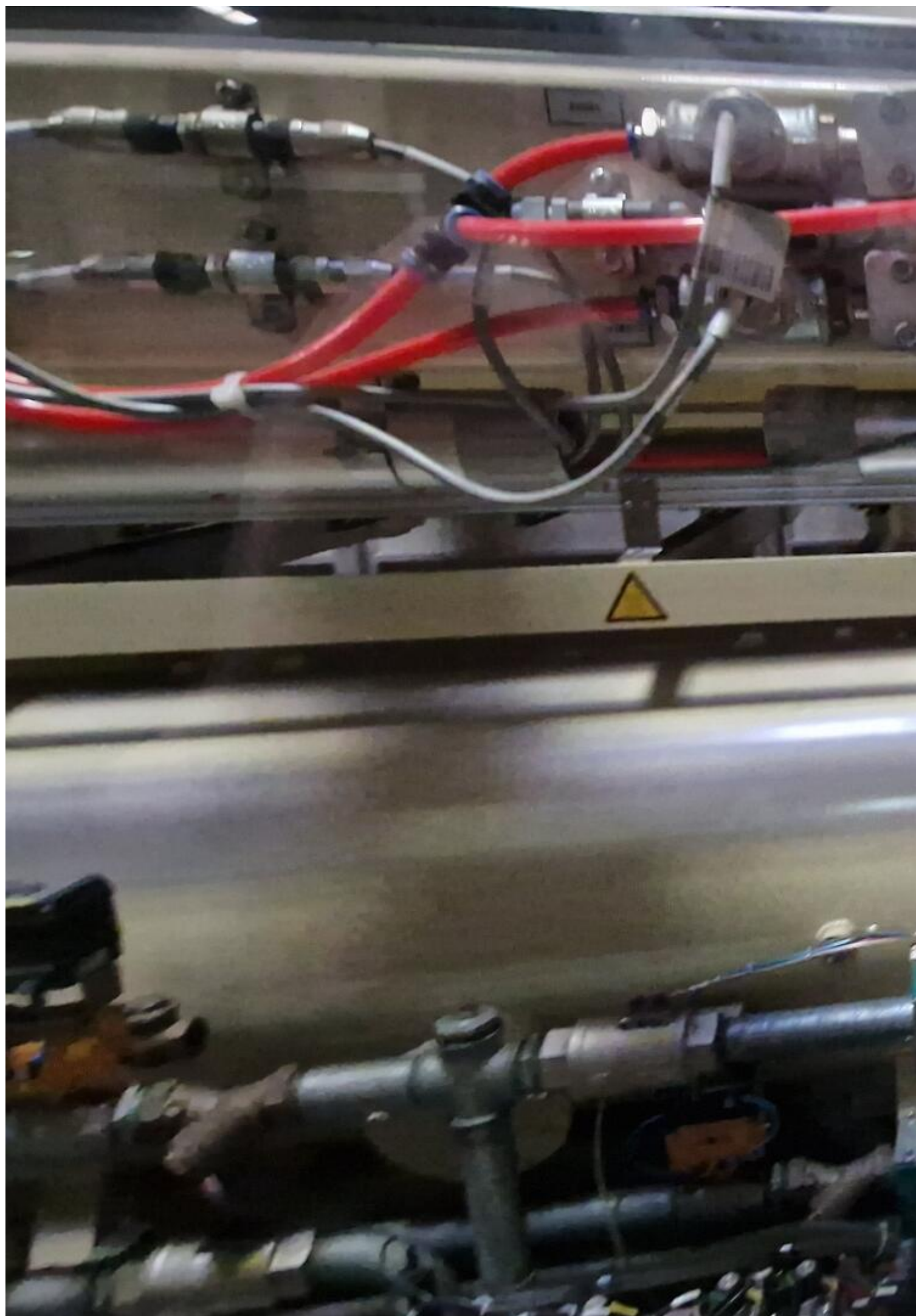




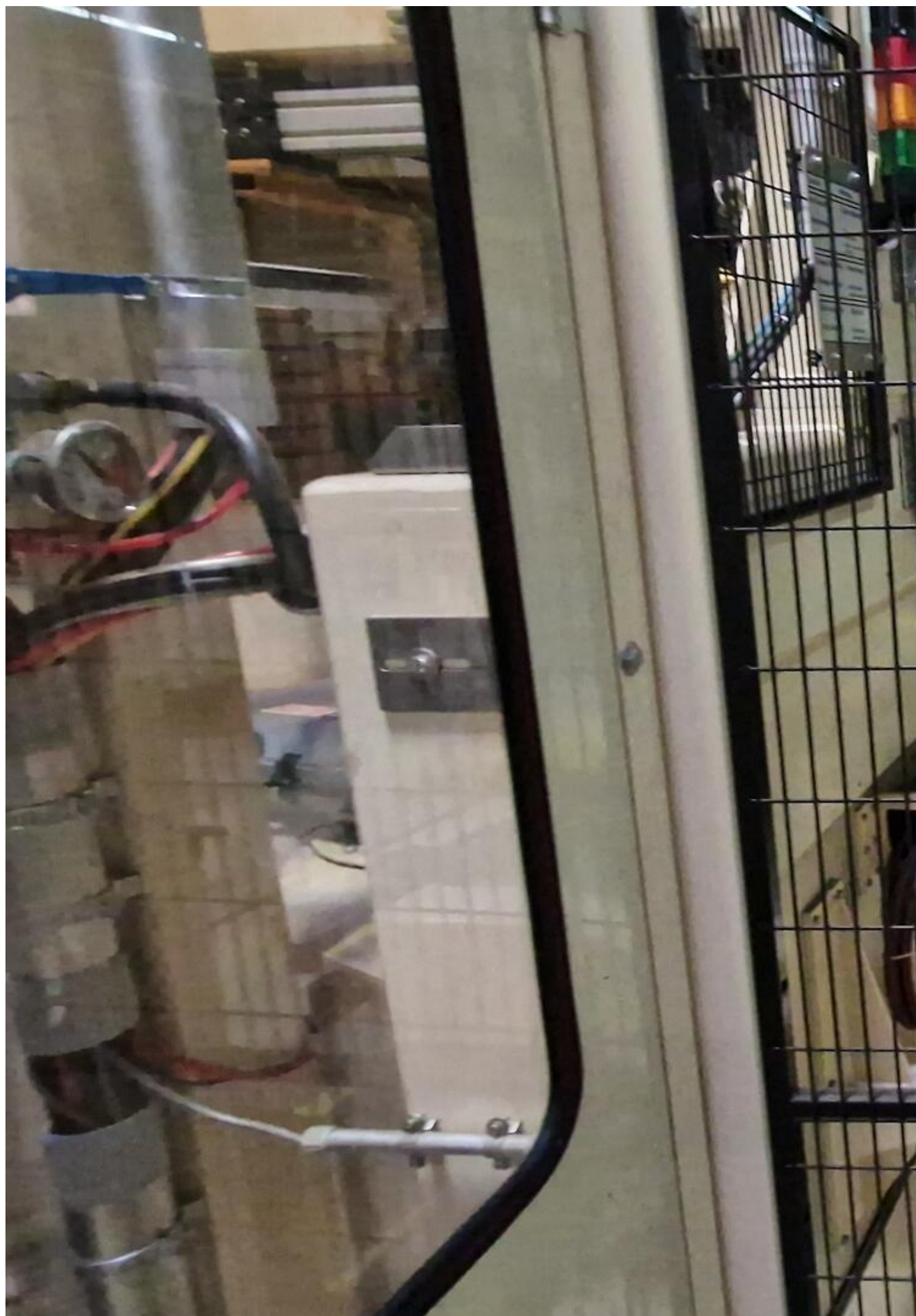






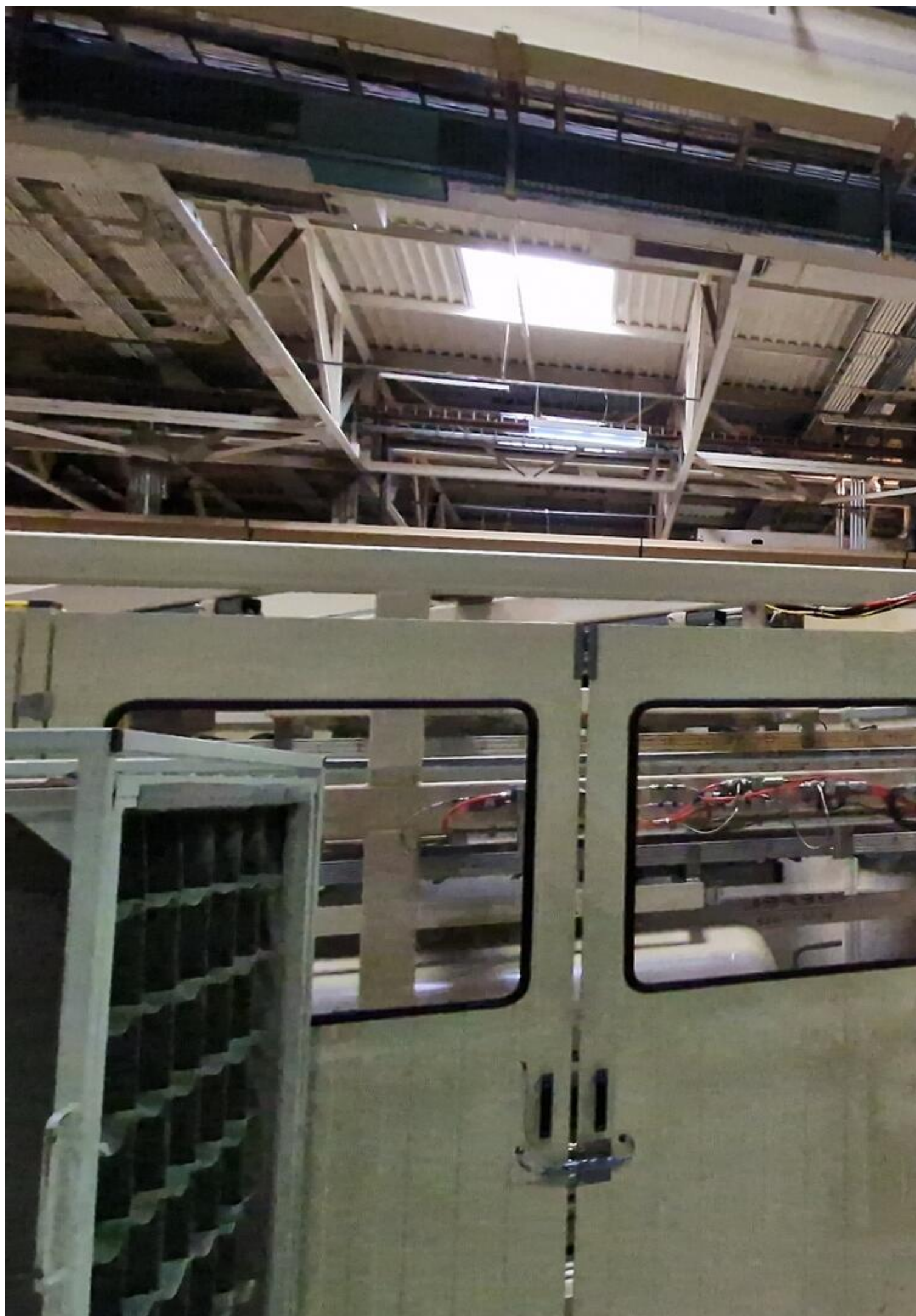






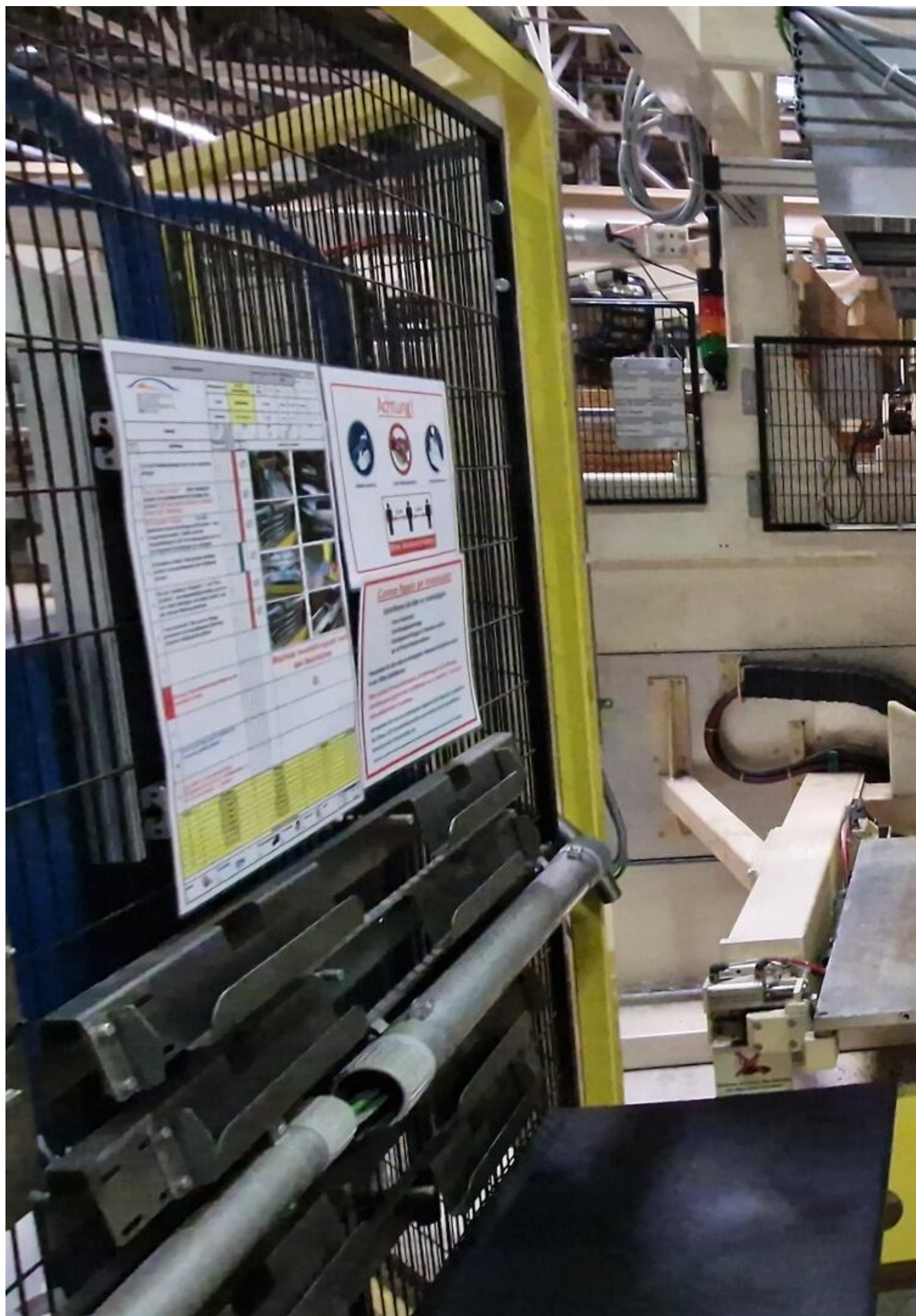






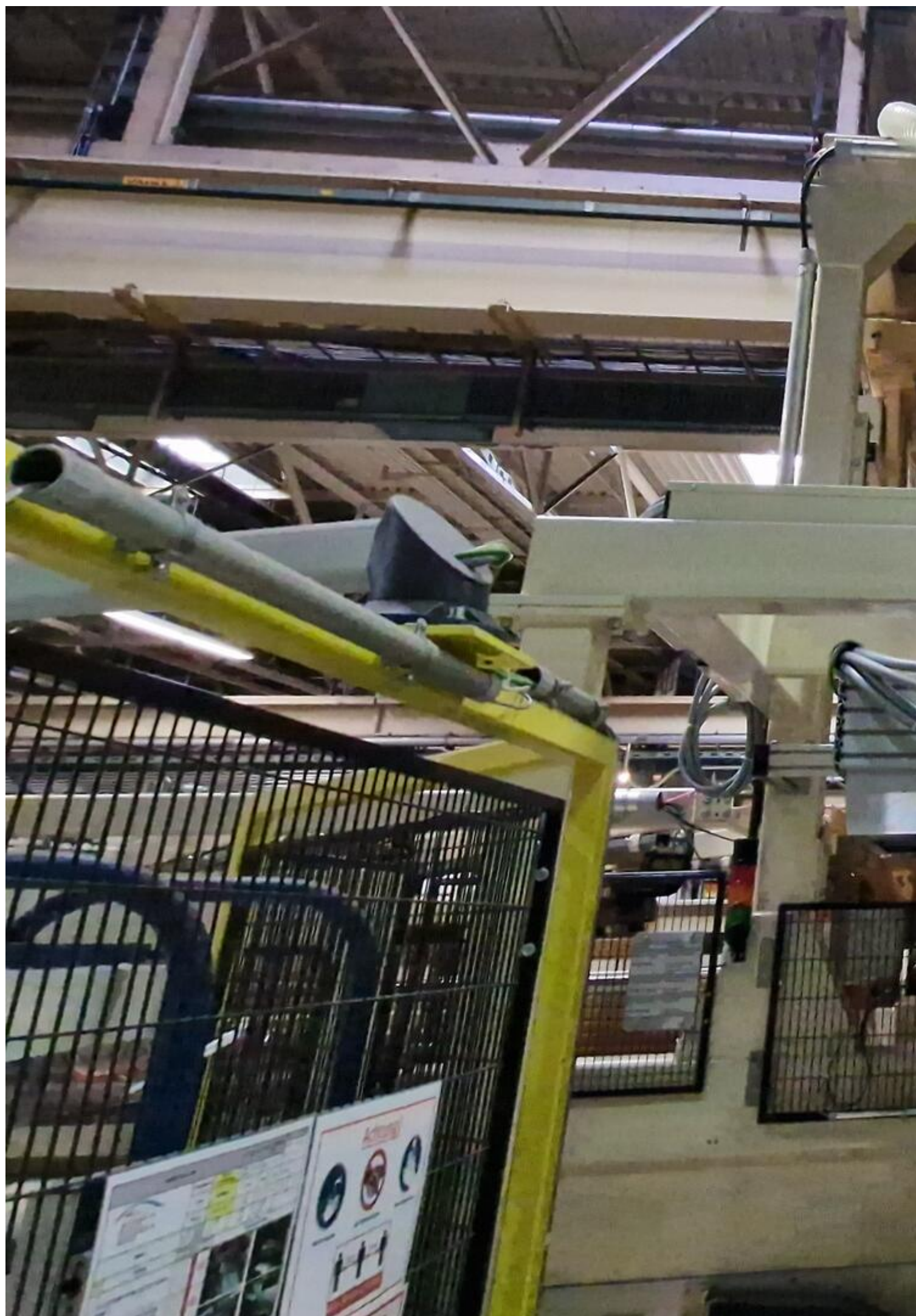












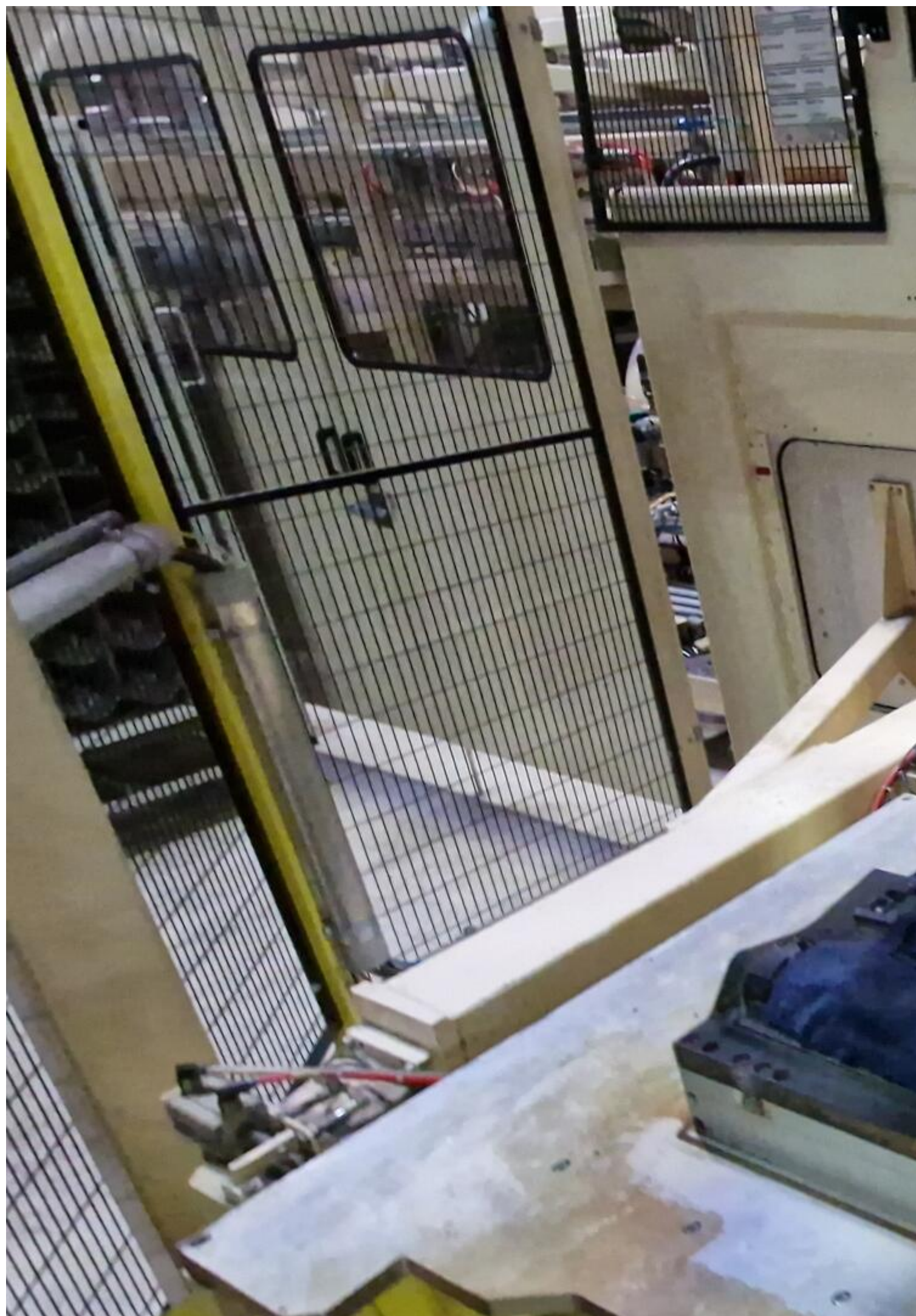


















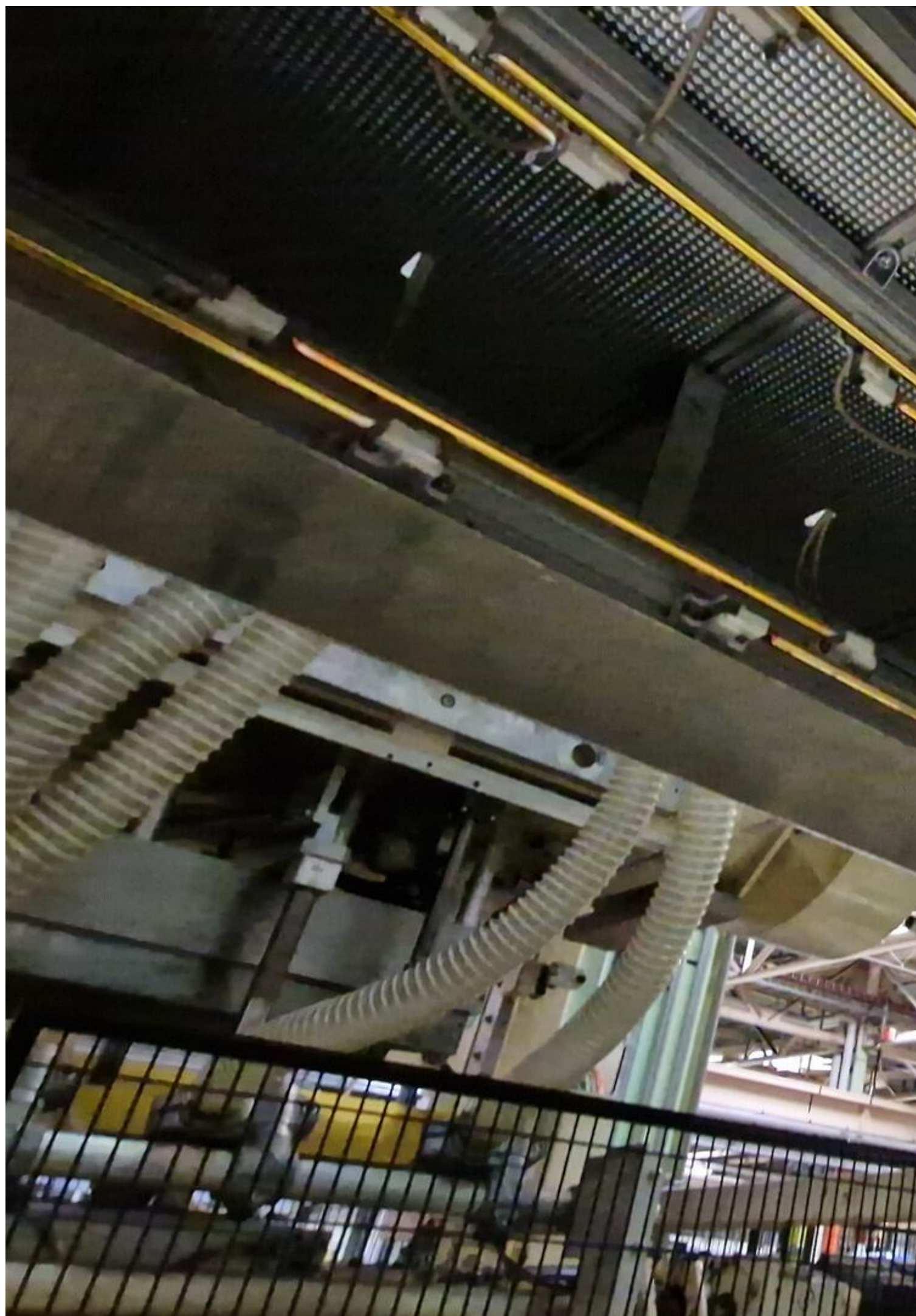
DIN EN ISO 13055  
S = 1000 mm  
T = 0,5 mm

F















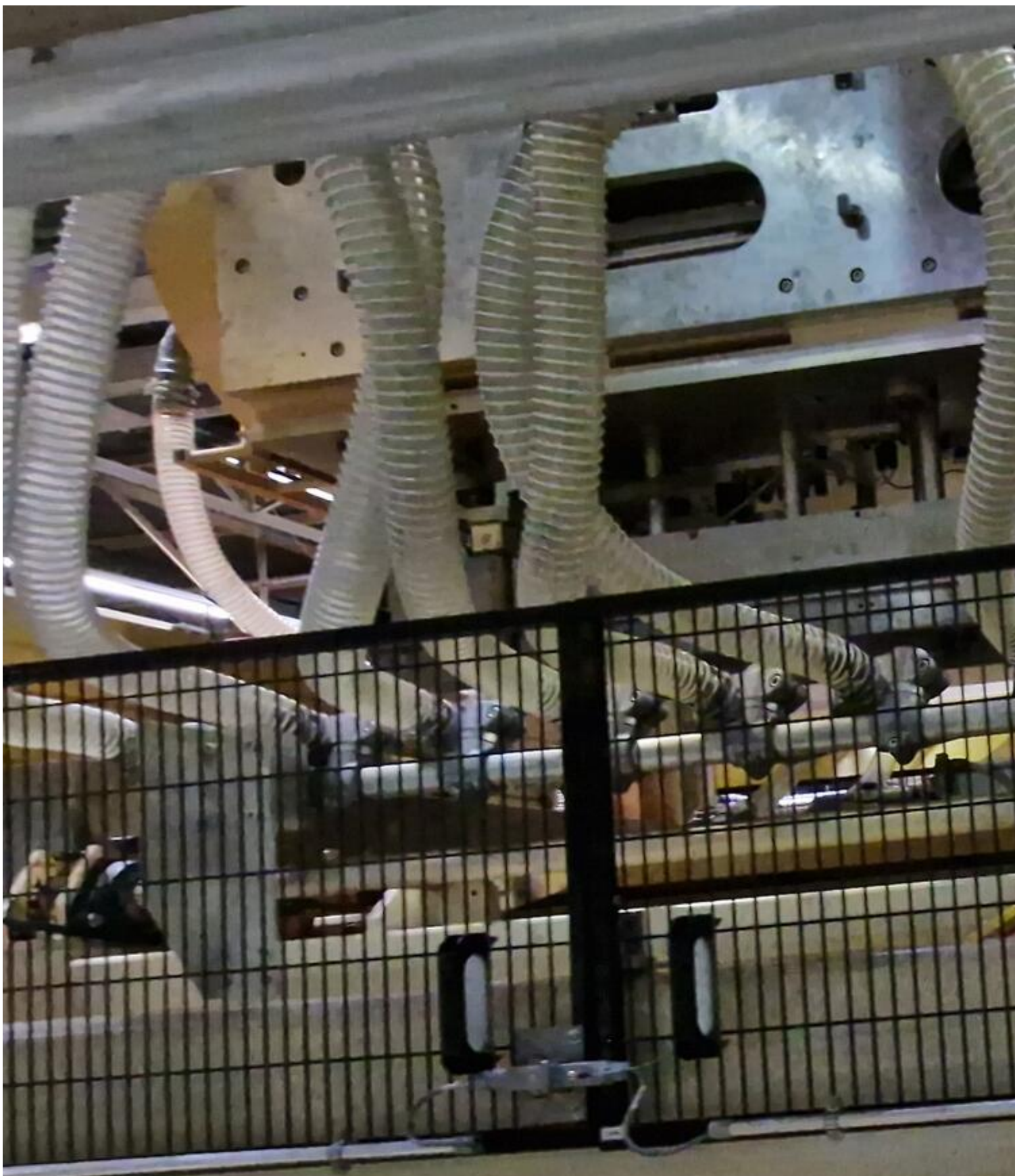












DIN EN ISO 13855  
S = 1000 mm  
T = 0,5 sek.







**Video:**



Asset-Trade

Assessment and Sale of Used Assets world wide

Am Sonnenhof 16

47800 Krefeld

Germany



Tel.: +49 2151 32500 33

Fax.: +49 2151 65 29 22

Email: [info@asset-trade.de](mailto:info@asset-trade.de)

Web.: <https://www.asset-trade.de/en>

Generated on 21.01.2026

© Copyright 2026 - [Asset-Trade](#)

Page