

Image not found or type unknown



Ref. No.:

142607010911

Overview and Technical Data:

Loroch CNC Turbo 910 circular saw sharpening machine

LOROCH



Year of Build:

Jan 1997

Description:

Used LORCH CNC Turbo 910 saw blade sharpening machine

Technische Daten;

- Grinding range:
 - Min. saw blade Ø: approx. Ø 80 mm
 - Max. Saw blade Ø: approx. Ø 910 mm

- Smallest tooth pitch: approx. 16
- Largest tooth pitch: approx. 999
- Max. saw blade width Saw blade width: approx. 8 mm
- Min. tooth height: approx. 1.2 mm
- Max. tooth height Tooth height: approx. 14 mm
- Grinding wheels up to 250 mm
- Grinding wheel width: approx. 1.5 - 18 mm
- Spindle speed: 50-220 rpm
- X-axis: 510 mm
- Y-axis: 910 mm
- Lateral chamfering or bevelling up to max. 45 degrees
- Working speed: approx. 15 - 180 teeth / min
- Drive power: approx. 1.1 kW
- Dressing unit for ceramic grinding wheels
- Grinding with CBN + DIA + ceramic grinding wheels
- CAD programme for own tooth form programming
- A fire extinguishing system Kraft and Bauer
- Extraction as well as cleaning system with magnetic separator
- Coolant oil
- Total power requirement: 1.1 kW

According to Loroach, a circuit board seems to be defective on this machine, which is why there are problems with referencing. approx. 800 Euro

Powerful service centre for metal-cutting circular saw blades

Technical Data:

Technical Data:

Control:

[CNC](#)

Dimensions and Weight:

Height:

1.850 mm

Length:

1.550 mm

Width:

800 mm

Weight:

925 kg

Buyer Information:

Condition:

[Repairs required](#)

Available:

Immediately

Sold as:

EXW (Ex Works - Incoterm)

VAT:

19 %

Buyers Premium:

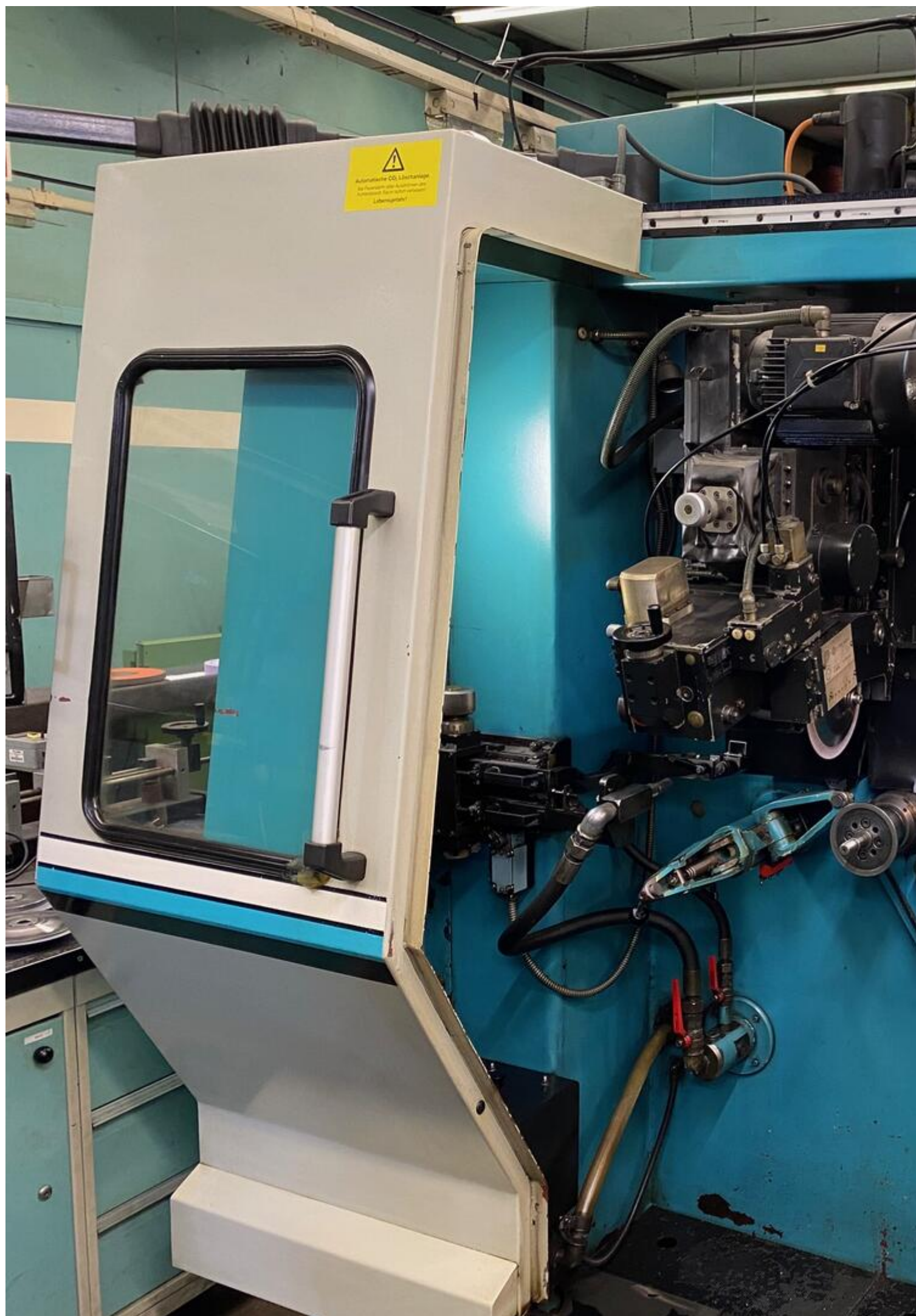
18 %

Location:

Germany

Images:





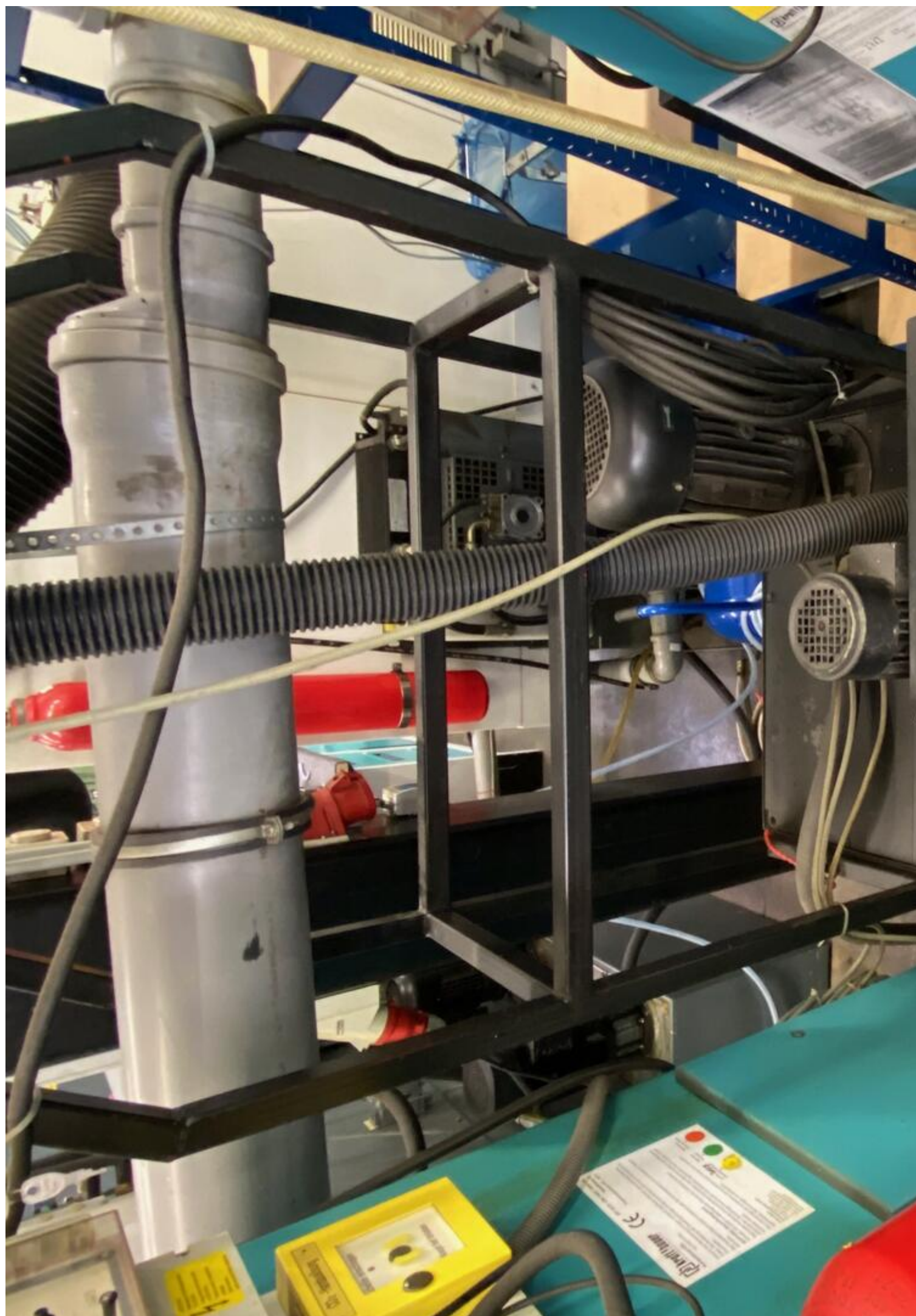

Automatische CO₂-Lichtanlage
Bei Reparatur oder Austausch der
Komponenten bitte sicherstellen, dass
die Lichtanlage gesperrt ist.
Lichtschutz!

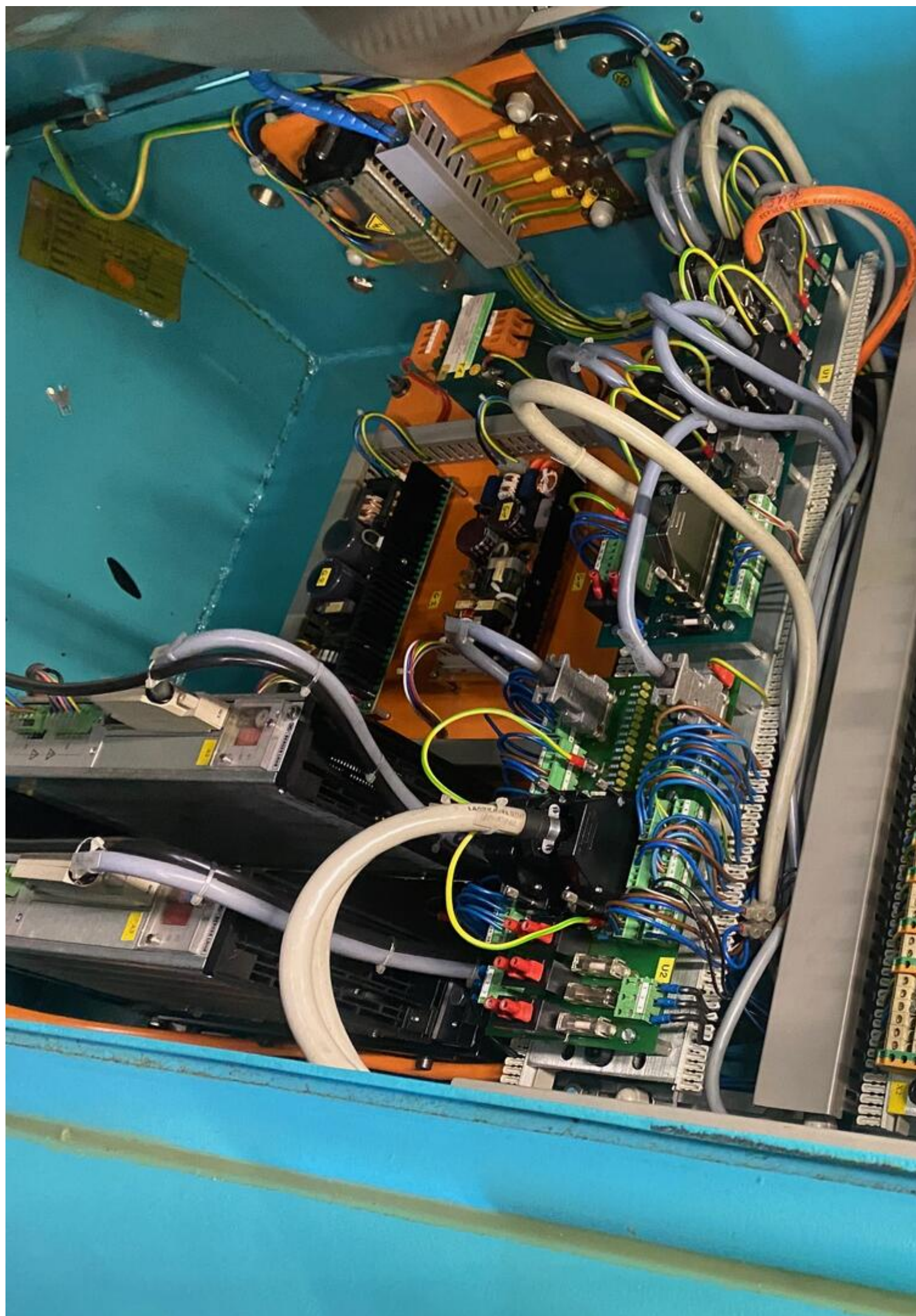


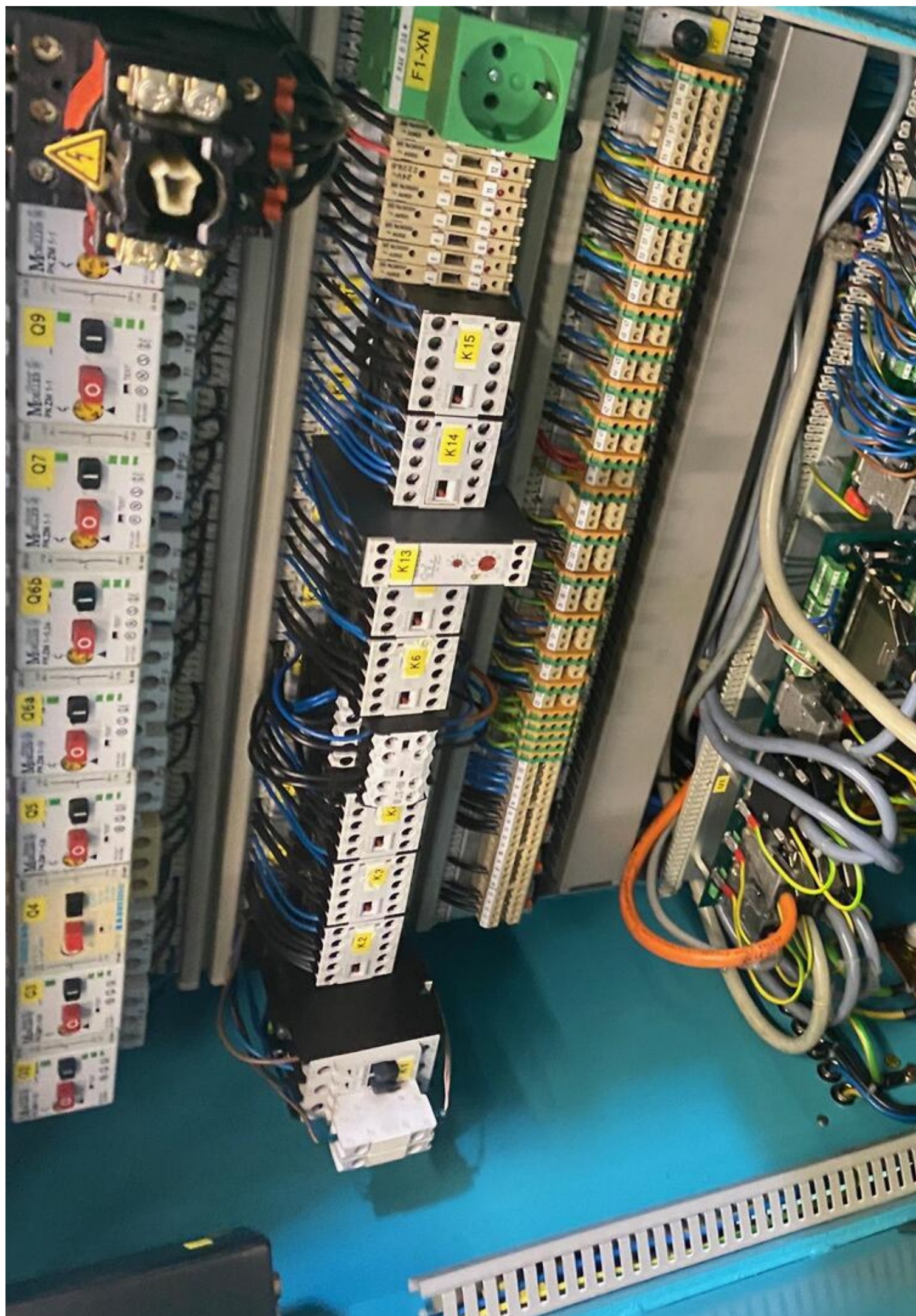




















Asset-Trade

Assessment and Sale of Used Assets world wide

Am Sonnenhof 16

47800 Krefeld

Germany

Tel.: +49 2151 32500 33

Fax.: +49 2151 65 29 22

Email: info@asset-trade.de

Web.: <https://www.asset-trade.de/en>

Ref. No.:
142607010911

Overview and Technical Data:

Loroch CNC Turbo 910 circular saw sharpening machine

[LORCH](#)



Year of Build:
Jan 1997

Description:

Used LORCH CNC Turbo 910 saw blade sharpening machine

Technische Daten;

- Grinding range:
 - Min. saw blade Ø: approx. Ø 80 mm
 - Max. Saw blade Ø: approx. Ø 910 mm
 - Smallest tooth pitch: approx. 16
 - Largest tooth pitch: approx. 999
 - Max. saw blade width Saw blade width: approx. 8 mm
 - Min. tooth height: approx. 1.2 mm
 - Max. tooth height Tooth height: approx. 14 mm
- Grinding wheels up to 250 mm
- Grinding wheel width: approx. 1.5 - 18 mm
- Spindle speed: 50-220 rpm
- X-axis: 510 mm

- Y-axis: 910 mm
- Lateral chamfering or bevelling up to max. 45 degrees
- Working speed: approx. 15 - 180 teeth / min
- Drive power: approx. 1.1 kW
- Dressing unit for ceramic grinding wheels
- Grinding with CBN + DIA + ceramic grinding wheels
- CAD programme for own tooth form programming
- A fire extinguishing system Kraft and Bauer
- Extraction as well as cleaning system with magnetic separator
- Coolant oil
- Total power requirement: 1.1 kW

According to Loroach, a circuit board seems to be defective on this machine, which is why there are problems with referencing. approx. 800 Euro

Powerful service centre for metal-cutting circular saw blades

Technical Data:

Technical Data:

Control:

[CNC](#)

Dimensions and Weight:

Height:

1.850 mm

Length:

1.550 mm

Width:

800 mm

Weight:

925 kg

Buyer Information:

Condition:

[Repairs required](#)

Available:

[Immediately](#)

Sold as:

[EXW \(Ex Works - Incoterm\)](#)

VAT:

[19 %](#)

Buyers Premium:

[18 %](#)

Location:

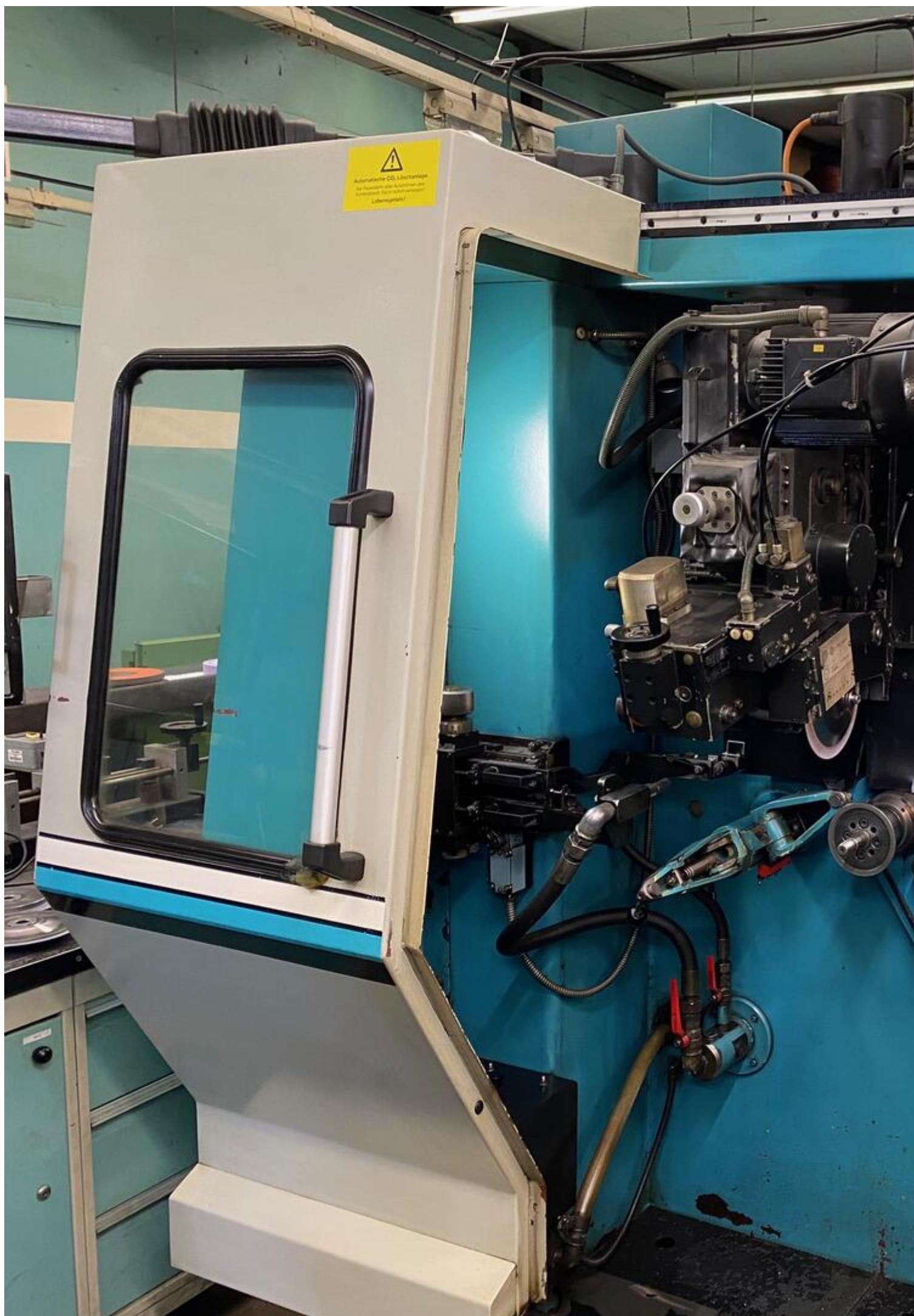
Germany

Images:



Loroch
CNC-TURBO





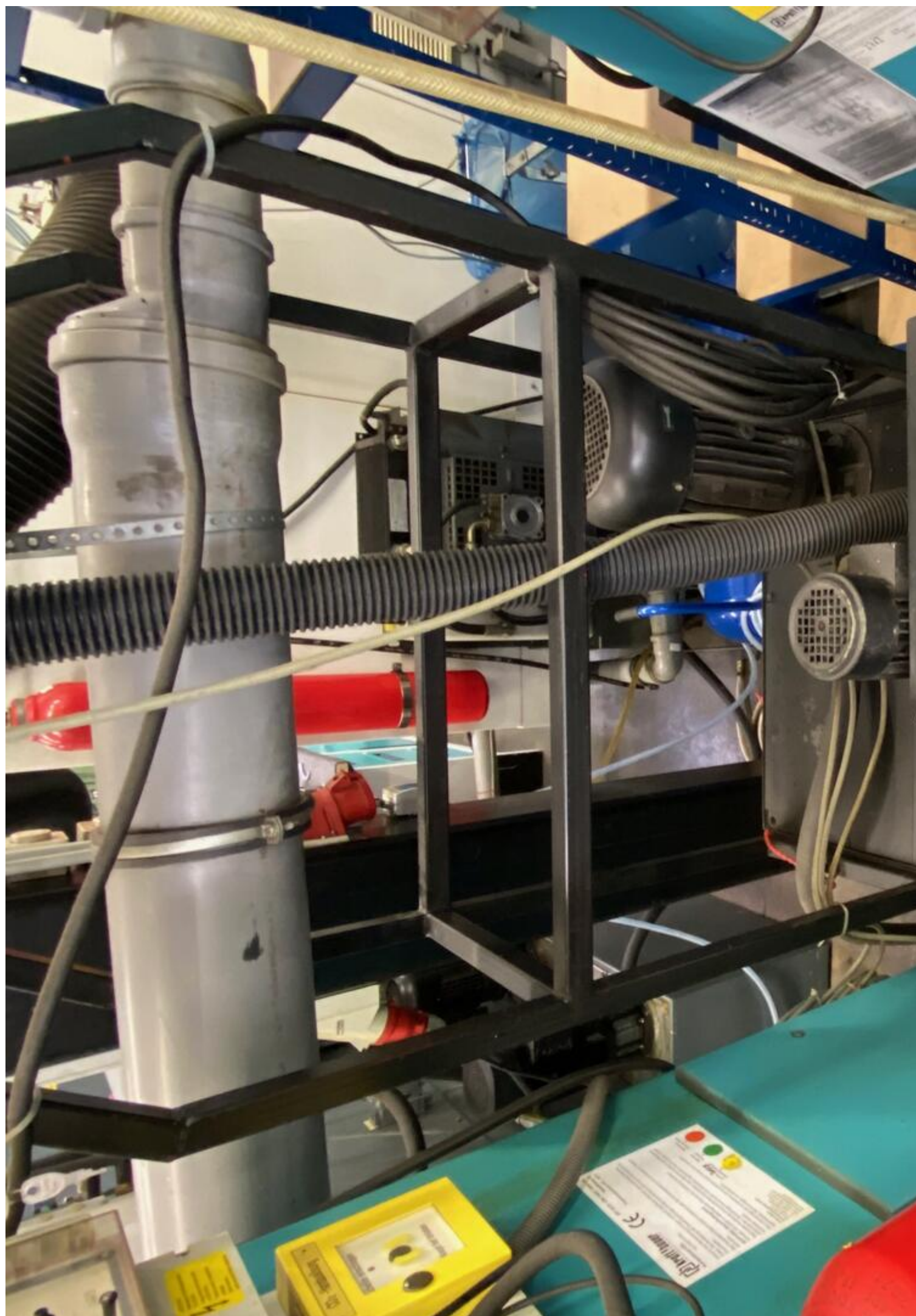

Automatische CO₂-Lichtanlage
Bei Reparatur oder Austausch der
Komponenten bitte sicherstellen, dass
die Lichtanlage nicht in Betrieb ist.

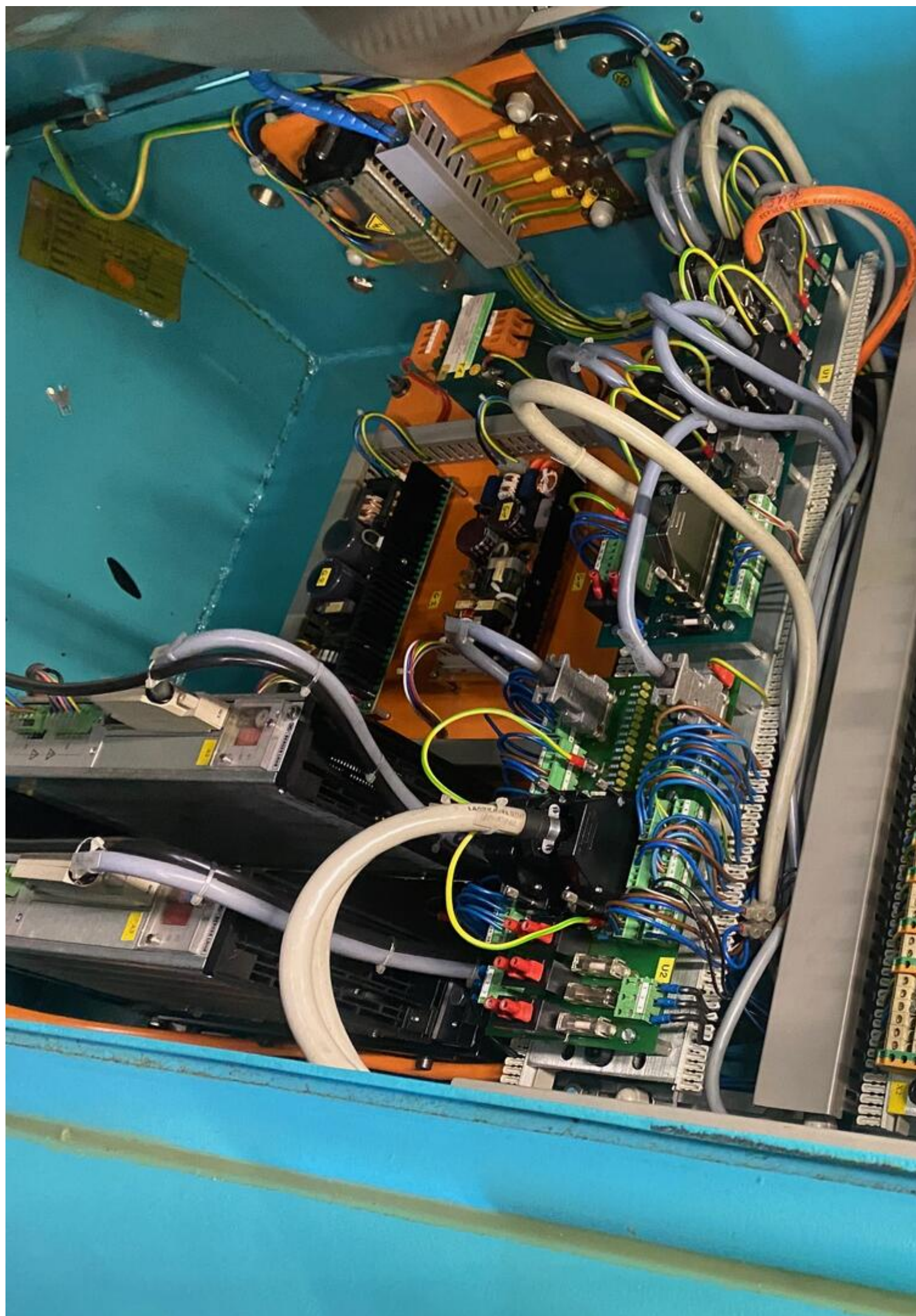


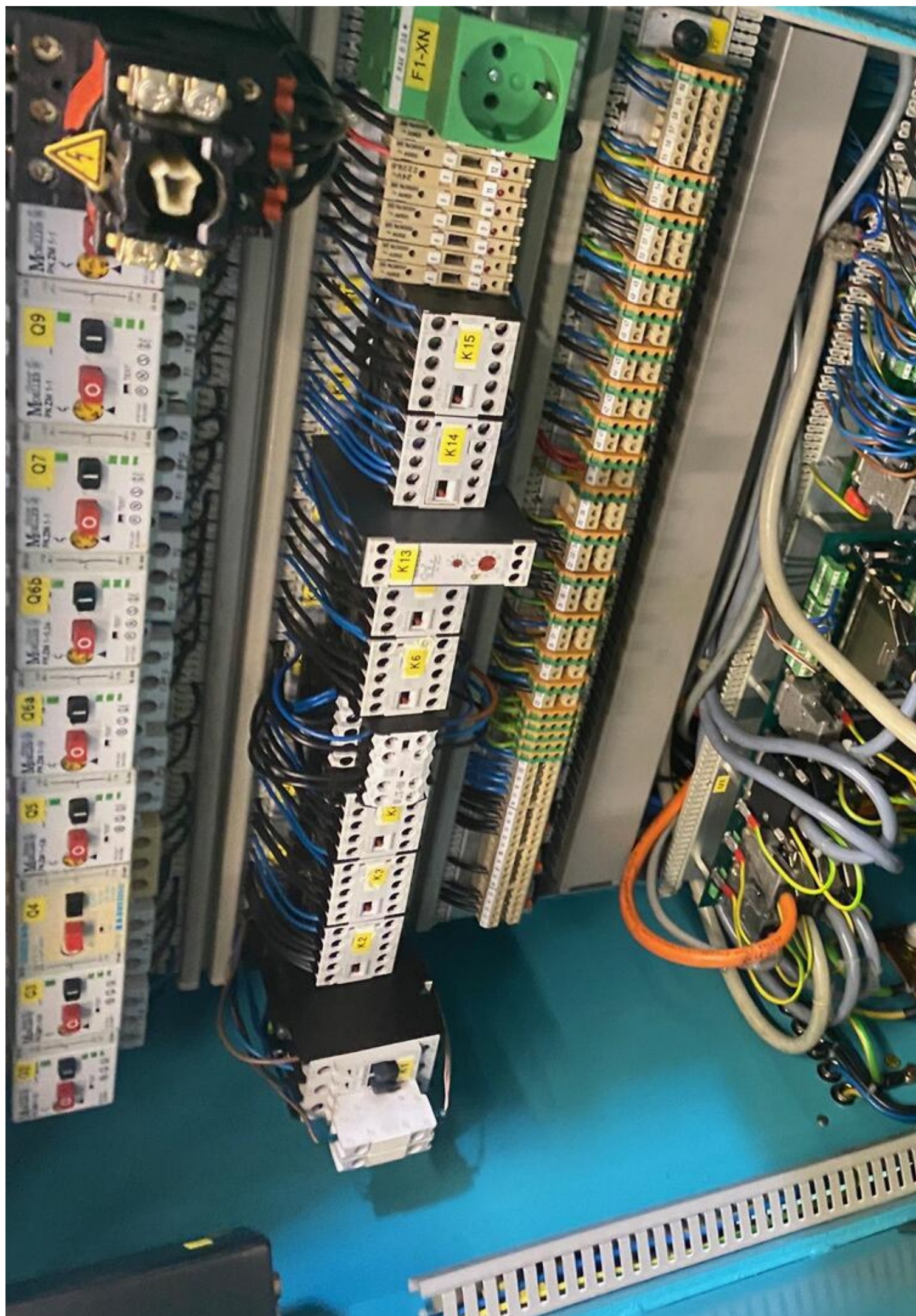




















Asset-Trade

Assessment and Sale of Used Assets world wide

Am Sonnenhof 16

47800 Krefeld

Germany

Tel.: +49 2151 32500 33

Fax.: +49 2151 65 29 22

Email: info@asset-trade.de

Web.: <https://www.asset-trade.de/en>

Generated on 16.02.2026

© Copyright 2026 - [Asset-Trade](#)

Page