



Asset-Trade

Assessment & Sale of Used Assets

Ref. No.: 1450-11292023

Overview and Technical Data:

TRAUB TND 200 CNC Lathe for Sale

TRAUB

INDEX

TRAUB

Year of Build: Mar 1992



Description:

Used TRAUB SONIM TND 200 CNC Lathe for Sale

CNC Controls Traub TX8F

Technical Data:

- Chuck diameter: 140 mm
- Feed speed X / Z: X:155 Z:250 mm / min
- Turning Length: 250 mm
- Spindle passage: 42 mm
- Spindle Speeds: 5000 RPM
- Feed Capacity - Z: 2,9 kN
- Feed Capacity - X: 2,9 kN
- Rapid Travel Speed X-Axis: 15 m / min
- Rapid Travel Speed Z-Axis: 25 m / min
- Main Drive: 7,5 kW
- Tool changer: 1/12 Pcs
- Turning diameter over cross slide: 220 mm



Technical Data:

Technical Data:

Control: TX8F
Machine Hours: 26166.00 hrs.
Turning length: 250.00 mm
Turning diameter: 200.00 mm
Spindle Speed: 5000.00 rpm
Tool Capacity: 12 x
Tailstock: Yes
Bezel: Yes

Dimensions and Weight:

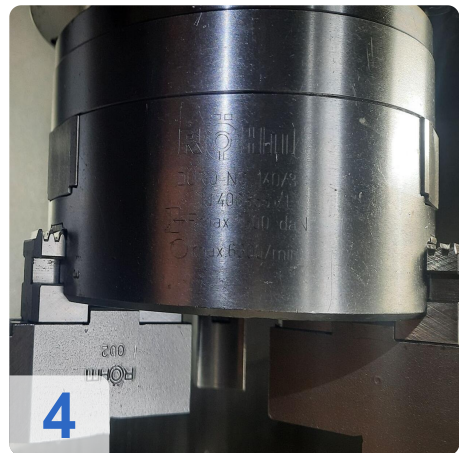
Height: 1700 mm
Length: 2300 mm
Width: 1500 mm
Weight: 2900 kg

Buyer Information:

Condition: Very good condition
Available: Sold
Sold as:
EXW (Ex Works - Incoterm)
VAT: 19 %
Buyers Premium: 18 %
Location: Germany



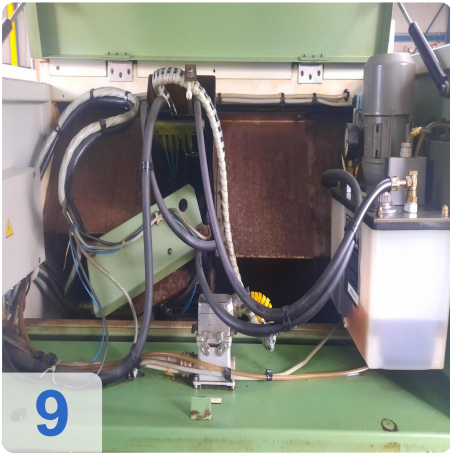
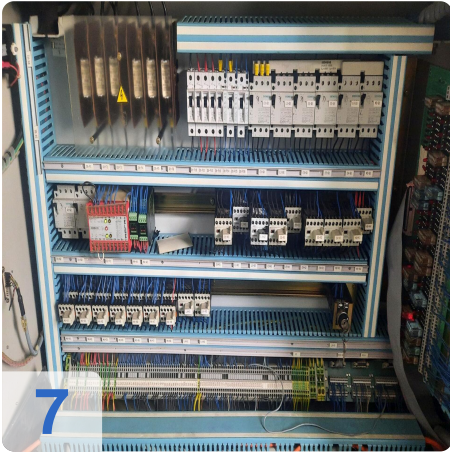
Images:





As

e
Assets





Asset-Trade

Assessment & Sale of Used Assets



Asset-Trade

Assessment & Sale of Used Assets

QR Code for <https://www.asset-trade.de/en/print/pdf/node/7767>

Asset-Trade

**Assessment and Sale of Used Assets world
wide**

Am Sonnenhof 16

47800 Krefeld

Germany

Tel.: +49 2151 32500 33