



Asset-Trade

Assessment & Sale of Used Assets

Ref. No.: 1425-06201700

Overview and Technical Data:

Used ULMER SF40 REINECKER End profile grinding machine

ULMER

 **ULMER**
WERKZEUGSCHLEIFTECHNIK

Year of Build: Jan 2018



Description:

Buy used ULMER SF40 REINECKER | CNC end machining machine

If you are looking for a REINECKER end machining machine for the precise machining of cylindrical tools, then the used ULMER SF40 REINECKER is the ideal choice. Buying this end machining machine means investing in a powerful and reliable machine that efficiently handles a wide range of tool machining tasks. Whether for solid carbide, HSS or ceramics – the ULMER SF40 enables the machining of tips, chamfers and radii with the highest precision.

Technical data:

- Travel paths:
 - X-axis 450 mm
 - Z-axis 250 mm
- Resolution:
 - X, Z-axis: 0.001 mm
 - C-axis: 0.001°
- Rapid traverse X / Z: 15 / 30 m/min.
- Grinding spindle:
 - Motor spindle \varnothing x length: 140 x 300 mm
 - Drive power S6: 14 kW / 170 Hz
 - Speed ??continuously variable: 1,000 to 7,500 min⁻¹ / 250 Hz
 - Torque const.: 27 Nm to 5,000 min⁻¹
 - Grinding wheel \varnothing max.: 350 mm
 - Cutting speed: <140 m/s
- Workpiece spindle (C-axis):
 - Mounting taper: SK50
 - Speed ??max.: 3,000 min⁻¹
 - Max. torque: 28 Nm
- Dimensions WxDxH: 1,900 x 1,900 x 1,900 mm
- Accessories:
 - Control and software NUMROTO Plus cylindrical grinding, loader, in-process measuring
 - Probe for process-related measuring, including touch cycles
 - 3D collision monitoring
 - Interpolating C-axis



- Balancing system for grinding wheel in the machine
 - Automatic chain loader
 - Automatic bar feed
 - Coolant pressure increase
 - Oil pan
 - K&B fire extinguishing system including fire damper
 - Connections for central coolant supply and oil mist extraction
 - Collet chuck W20 UP
 - Hydro expansion chuck Schunk
 - General:
 - The machine is functional, in very good condition and can be inspected by appointment.
-

The ULMER end machining machine SF 40 REINECKER stands for:

- Creation of tips, chamfers, radii and their combination at the ends of cylindrical tools made of solid carbide, HSS and ceramic.
- Grinding unit with a liquid-cooled motor spindle.
- Variable spindle arrangement of the grinding unit for more flexibility, parallel or vertical.
- Up to four different grinding wheels can be mounted on one holder.
- Use of different chuck clamping systems.
- Measuring probe for recording the axial workpiece position and angular position of the cooling channels.
- Automatic loading devices are available as an option.
- NUM Flexium+ CNC control with powerful NUM DriveX drives and integrated NUM-Safe safety architecture.

Special features:

- The ULMER SF40 REINECKER is a high-precision tool grinding machine that offers high machining quality thanks to its powerful motor spindle and flexible spindle arrangement.
- With the option of mounting up to four different grinding wheels on one holder,



Technical Data:

Technical Data:

Control: CNC

Dimensions and Weight:

Height: 1.900 mm

Length: 1.900 mm

Width: 1.900 mm

Weight: 4.000 kg

Buyer Information:

Condition: Very good condition

Available: Sold

Sold as:

EXW (Ex Works - Incoterm)

VAT: 19 %

Buyers Premium: 18 %

Location: Germany



Images:

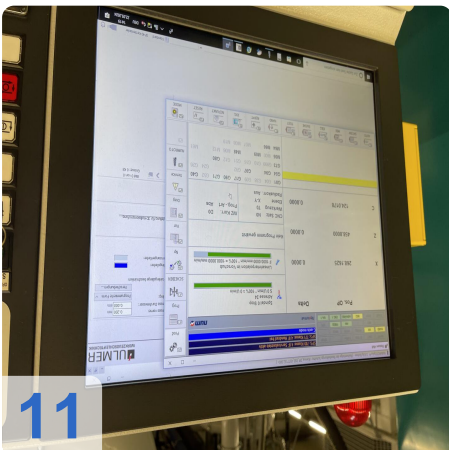


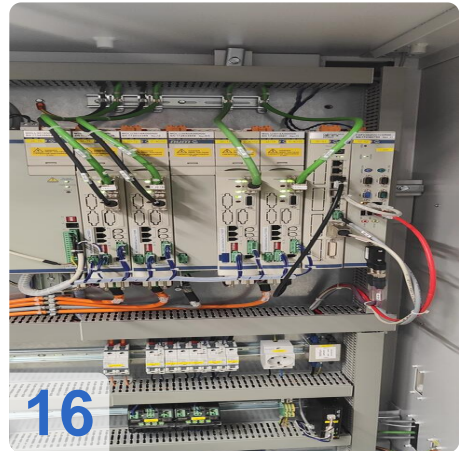
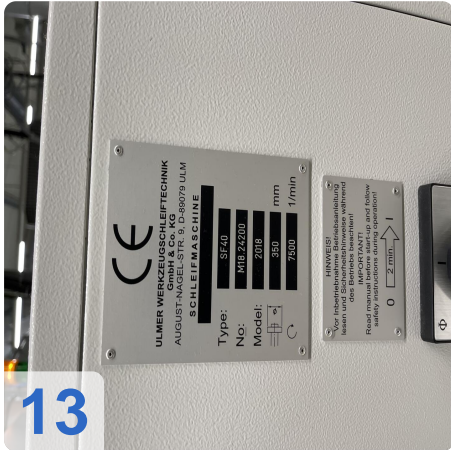
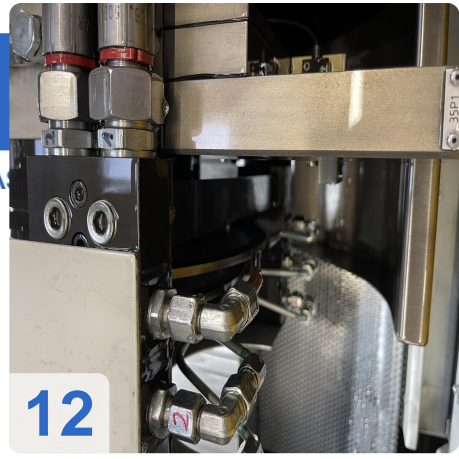


As

e

assets







As

e

Assets



18



19



20



21

CE
ULMER WERKZEUGSCHLEIFTECHNIK
GmbH & Co. KG
AUGUST-NADEL-STR. 9, D-89079 ULM
SCHLEIFMASCHINE

Type:	SF 40
No:	MB 24200
Model:	2018
	350 mm
	7500 1/min

HINWEIS!
Vor Inbetriebnahme Betriebsanleitung
lesen und Sicherheitsinweise während
des Betriebes beachten!
IMPORTANT!
Read manual before start-up and follow
safety instructions during operation!

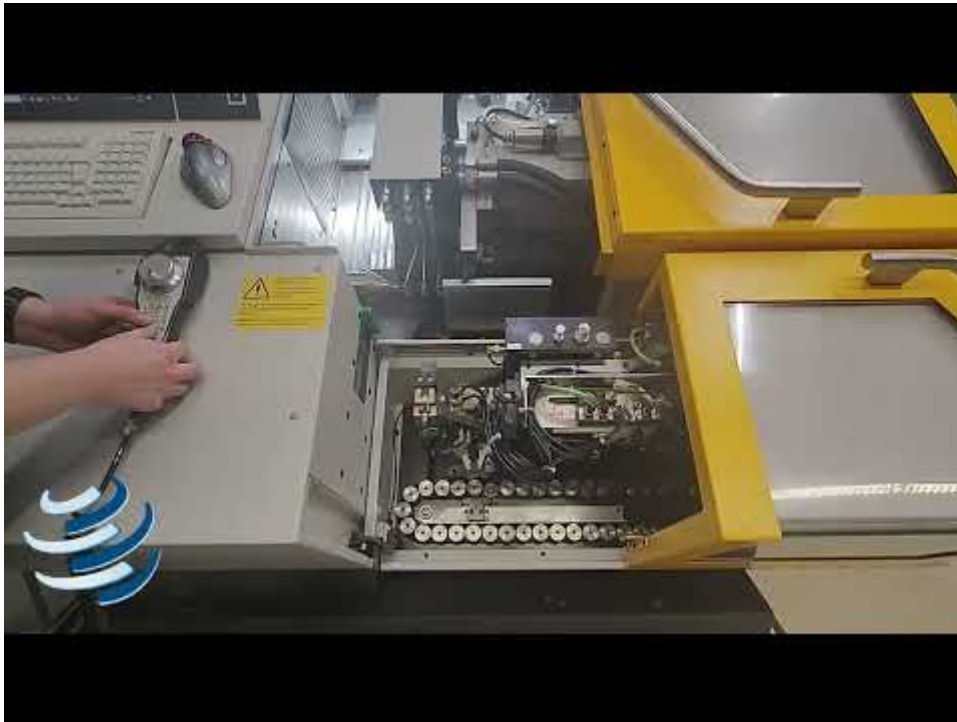


U 200 V 3
I 50 Hz P 25 kVA
L 25 A I 20 A



Video:







Asset-Trade

Assessment & Sale of Used Assets



Asset-Trade

**Assessment and Sale of Used Assets world
wide**

Am Sonnenhof 16

47800 Krefeld

Germany

Tel.: +49 2151 32500 33