

Image not found or type unknown



Ref. No.:  
1436-09021041

## Overview and Technical Data:

# HERMLE C800 P machining centre for sale

## HERMLE



Year of Build:  
Jan 2000

## Description:

### Used HERMLE C800 P machining center

Used HERMLE C800 P machining center for sale - Ideal for precise, efficient machining processes. If you are looking to buy a used HERMLE C800 P, this machine offers everything you need. Equipped with a HEIDENHAIN TNC 430 CNC control and a new spindle head, this used HERMLE machining center guarantees high precision and reliability.

CNC controls HEIDENHAIN TNC 430  
New spindle head

Technical data:

- Travels
  - X-axis: 800 mm

- Y-axis: 500 mm
  - Z-axis: 500 mm
  - Table
    - Table size: 800 x 500 mm
    - Maximum permissible weight on the table: 250 kg
  - Spindle
    - Spindle taper: ISO 40
    - Spindle speed: 20-8000 rpm
    - Spindle Ø: 70 mm
    - IKZ 40 bar
    - Tool changer 30 units
    - Spindle power: 10.5 KW
  - Power supply: 400 V, 50 Hz.
  - Machine dimensions: 2930 x 3260 x 2210 mm
  - Machine weight: 8500 kg.
- 

With a spindle power of 10.5 kW and an impressive spindle speed of 8000 rpm, this horizontal machining center is particularly suitable for demanding tasks. If you want to buy a horizontal machining center, the HERMLE C800 P is the perfect choice.

The dimensions of the machine are 2930 x 3260 x 2210 mm and the total weight is 8500 kg. Don't miss the opportunity to purchase this used HERMLE C800 P to make your production efficient and precise.

## **Technical Data:**

## **Technical Data:**

Control:

[TNC 430](#)

Spindle Speed:

8.000 rpm

Tool Holder:

[SK40](#)

Tool Capacity:

30 x

## **Travels:**

X-Axis:

800 mm

Y-Axis:

500mm

Z-Axis:

500 mm

## **Dimensions and Weight:**

Height:

3.260 mm

Width:

2.210 mm

Length:

2.930 mm

Weight:

8.500 kg

## **Buyer Information:**

Condition:

[Very good condition](#)

Availability:

[Immediately](#)

Sold as:

[EXW \(Ex Works - Incoterm\)](#)

VAT:

[19 %](#)

Buyers Premium:

[18 %](#)

Location:

Germany

## **Images:**

 **HERMLE**







HEIDENHAIN

|       |   |    |   |   |   |   |
|-------|---|----|---|---|---|---|
|       | # | \$ | % | ^ | & | . |
| "     | Q | W  | E | R | T | Y |
| SHIFT | A | S  | D | F | G | H |
| SPACE | Z | X  | C | V | B | N |

NUM  
MET

CALC

MOD

HELP

100  
50  
0

180  
90  
270

0 5 %

|     |    |     |    |
|-----|----|-----|----|
| IV+ | Z+ | Y+  | V+ |
| X-  | ~  | X+  |    |
| Y-  | Z- | IV- | V- |

2

1

+











Asset-Trade

Assessment and Sale of Used Assets world wide

Am Sonnenhof 16

47800 Krefeld

Germany

Tel.: +49 2151 32500 33

Fax.: +49 2151 65 29 22

Email: [info@asset-trade.de](mailto:info@asset-trade.de)

Web.: <https://www.asset-trade.de/en>

Ref. No.:  
1436-09021041

**Overview and Technical Data:**

# HERMLE C800 P machining centre for sale

**HERMLE**



Year of Build:  
Jan 2000

## **Description:**

### **Used HERMLE C800 P machining center**

**Used HERMLE C800 P machining center for sale - Ideal for precise, efficient machining processes. If you are looking to buy a used HERMLE C800 P, this machine offers everything you need. Equipped with a HEIDENHAIN TNC 430 CNC control and a new spindle head, this used HERMLE machining center guarantees high precision and reliability.**

CNC controls HEIDENHAIN TNC 430  
New spindle head

Technical data:

- Travels
  - X-axis: 800 mm
  - Y-axis: 500 mm
  - Z-axis: 500 mm
- Table
  - Table size: 800 x 500 mm
  - Maximum permissible weight on the table: 250 kg
- Spindle
  - Spindle taper: ISO 40
  - Spindle speed: 20-8000 rpm

- Spindle Ø: 70 mm
  - IKZ 40 bar
  - Tool changer 30 units
  - Spindle power: 10.5 KW
  - Power supply: 400 V, 50 Hz.
  - Machine dimensions: 2930 x 3260 x 2210 mm
  - Machine weight: 8500 kg.
- 

With a spindle power of 10.5 kW and an impressive spindle speed of 8000 rpm, this horizontal machining center is particularly suitable for demanding tasks. If you want to buy a horizontal machining center, the HERMLE C800 P is the perfect choice.

The dimensions of the machine are 2930 x 3260 x 2210 mm and the total weight is 8500 kg. Don't miss the opportunity to purchase this used HERMLE C800 P to make your production efficient and precise.

## **Technical Data:**

### **Technical Data:**

Control:

[TNC 430](#)

Spindle Speed:

8.000 rpm

Tool Holder:

[SK40](#)

Tool Capacity:

30 x

### **Travels:**

X-Axis:

800 mm

Y-Axis:

500mm

Z-Axis:

500 mm

### **Dimensions and Weight:**

Height:

3.260 mm

Width:

2.210 mm

Length:

2.930 mm

Weight:

8.500 kg

### **Buyer Information:**

Condition:

[Very good condition](#)

Availability:

[Immediately](#)

Sold as:

[EXW \(Ex Works - Incoterm\)](#)

VAT:

[19 %](#)

Buyers Premium:

[18 %](#)

Location:

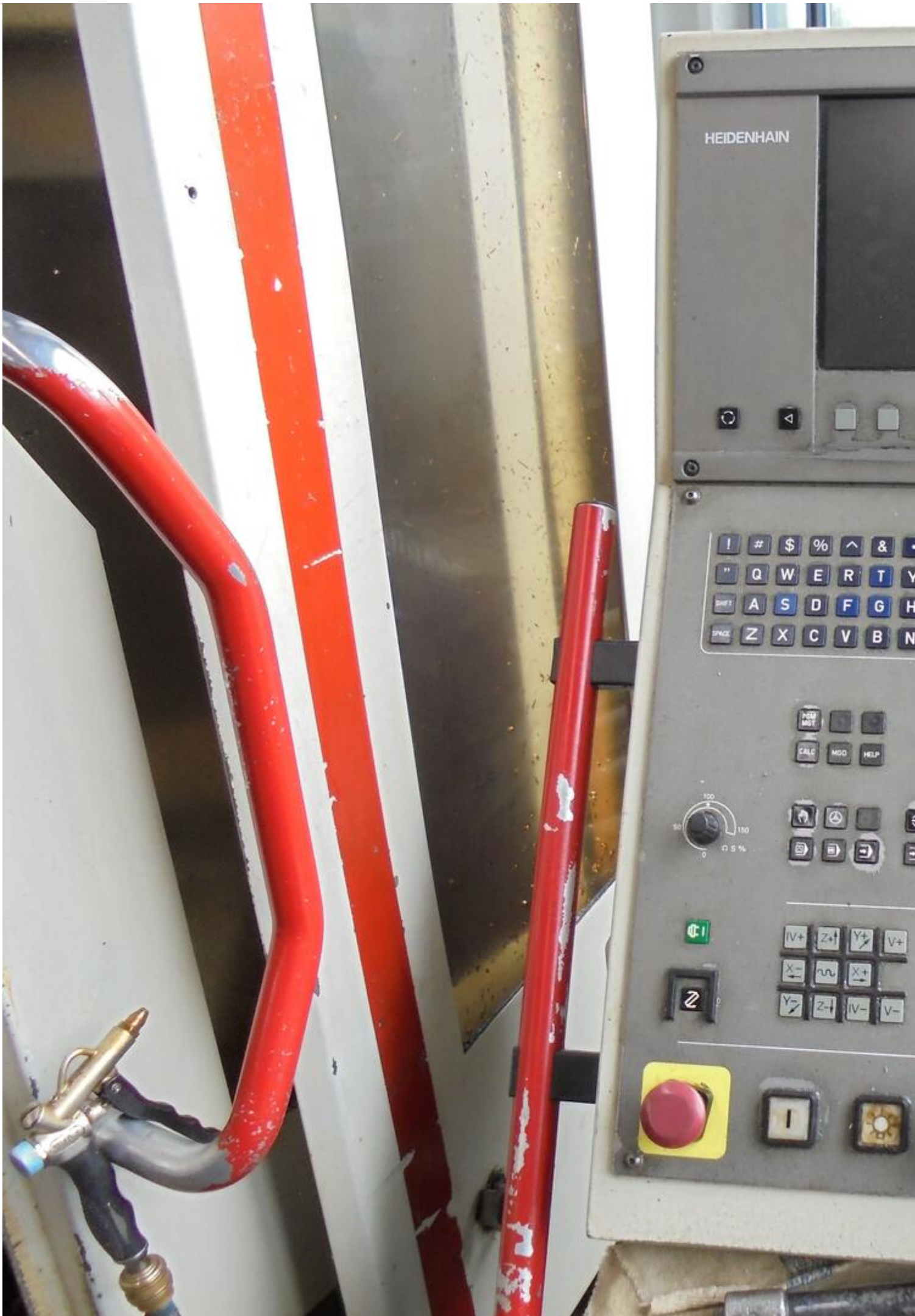
Germany

**Images:**

 **HERMLE**







HEIDENHAIN

|       |   |    |   |   |   |   |
|-------|---|----|---|---|---|---|
|       | # | \$ | % | ^ | & | . |
| "     | Q | W  | E | R | T | Y |
| SHIFT | A | S  | D | F | G | H |
| SPACE | Z | X  | C | V | B | N |

NUM  
MET

CALC

MOD

HELP

100  
50  
0

180

0 5 %

|     |    |     |    |
|-----|----|-----|----|
| IV+ | Z+ | Y+  | V+ |
| X-  | ~  | X+  |    |
| Y-  | Z- | IV- | V- |

2

1

2











Asset-Trade

Assessment and Sale of Used Assets world wide

Am Sonnenhof 16

47800 Krefeld

Germany

Tel.: +49 2151 32500 33

Fax.: +49 2151 65 29 22

Email: [info@asset-trade.de](mailto:info@asset-trade.de)

Web.: <https://www.asset-trade.de/en>

Generated on 28.04.2026

© Copyright 2026 - [Asset-Trade](#)

Page