

Image not found or type unknown



Ref. No.:

R1440-10041000

Overview and Technical Data:

Arburg Allrounder 1500 T 2000-400 injection molding machine

[ARBURG](#)

ARBURG

Year of Build:

Jan 2015

Description:

Used Arburg Allrounder 1500 T 2000-400 vertical injection molding machine

4x Machines available

from 2x2013 to 2x2015 - Operating Hours from 27528 to 42160 hrs

Technical data:

- Clamping force: 2000 kN
- Screw diameter: 40 mm
- Shot weight: 184 g PS
- Stroke volume: 201 max. cm³
- Injection pressure: 2000 bar
- Plasticizing capacity max: 29 kg/h PS
- Granulate container: 50 liters
- Screw speed: 53 m/min (2 pumps)
- Nozzle pressure: 60 | 400 kN/mm
- Mold height min: 400 mm
- Ejector stroke: 175 mm
- Ejector force forwards/backwards: 25 kN
- Opening force max.: 115 | 300 kN/mm
- Pallet distance fixed: 700 mm
- Turntable
 - Table diameter: 1500 mm
 - Rotation angle left/right: 180°
 - Weight of the movable mold half: 500 kg
 - Max. Weight on the turntable: 1050 kg

Machine still under power

The machine is equipped with 12 zones & 6 circuits and an interface for temperature control units, for remote control.

Charge amplifier “Kistler” for 2 internal pressure sensors.

Additional monitoring system (temperature monitoring) for the start-up parts

Each station is equipped with a core pull and two circuits for temperature control of the molds.

This used vertical Arburg ALLROUNDER injection molding machine was manufactured in 2013 & 2015. It has a clamping force of 2000 kN and a table diameter of 1500 mm. Suitable for different mold sizes. The screw diameter is 40 mm and ensures precise material processing with a maximum injection pressure of 2000 bar.

The Arburg Allrounder 1500 T 2000-400 is ideal for manufacturers looking for a robust and powerful machine and represents a great opportunity.

Contact us for more details on this vertical injection molding machine.

Technical Data:

Technical Data:

Control:

[CNC](#)

Dimensions and Weight:

Height:

2.894 mm

Length:

4.107 mm

Width:

2.648 mm

Weight:

21.500 kg

Buyer Information:

Condition:

[Very good condition](#)

Available:

[Immediately](#)

Sold as:

[EXW \(Ex Works - Incoterm\)](#)

VAT:

[19 %](#)

Buyers Premium:

[18 %](#)

Location:

Germany

Images:















Kenngrößen Maschine

Maschinentyp

150

Maschinenzyklen

1907

Betriebsstunden Pumpe

51

Betriebsstunden Automatik

42

Betriebsstunden Halbautomatik

Maschinentyp

f9000B = 1500 T





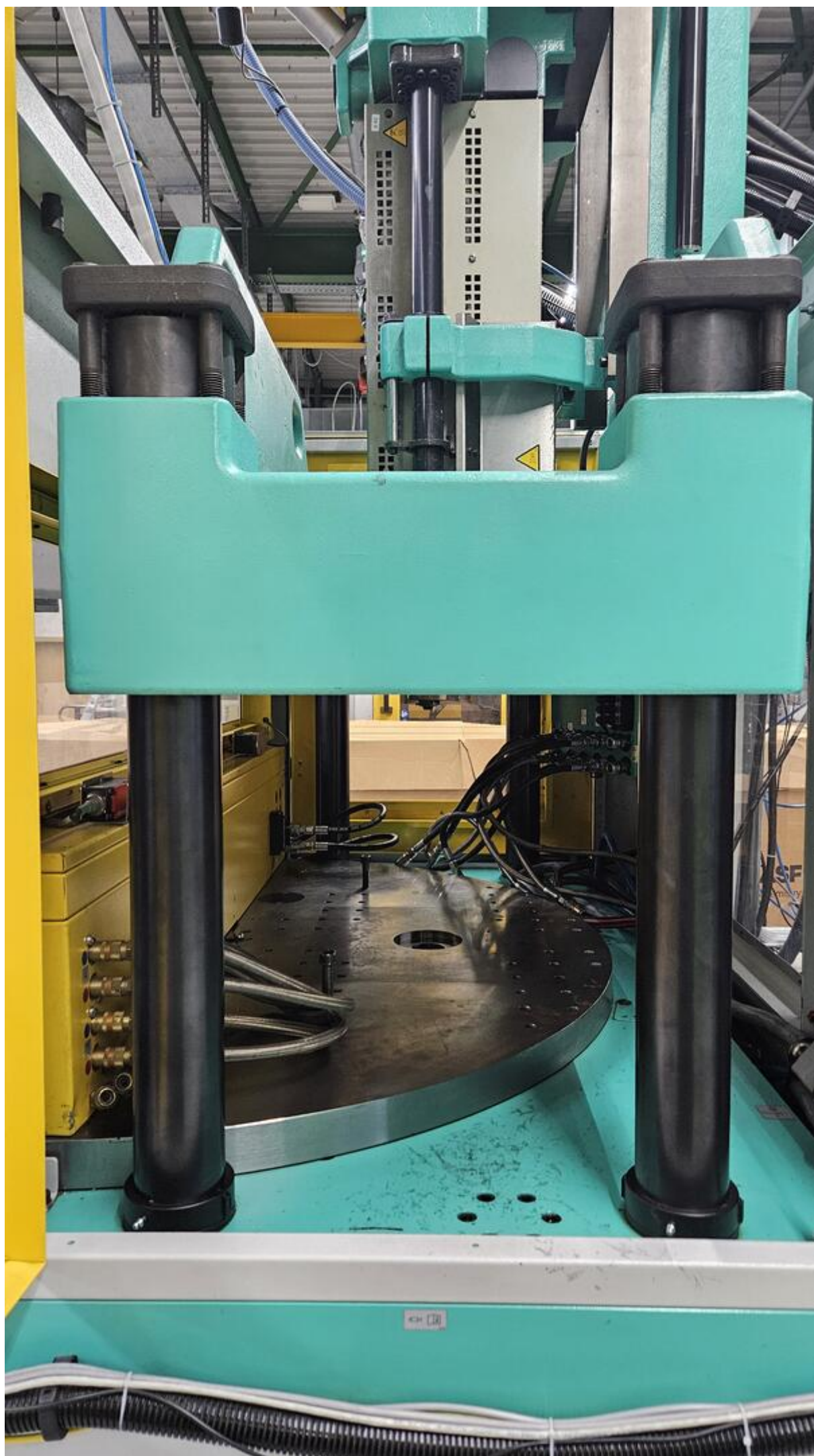




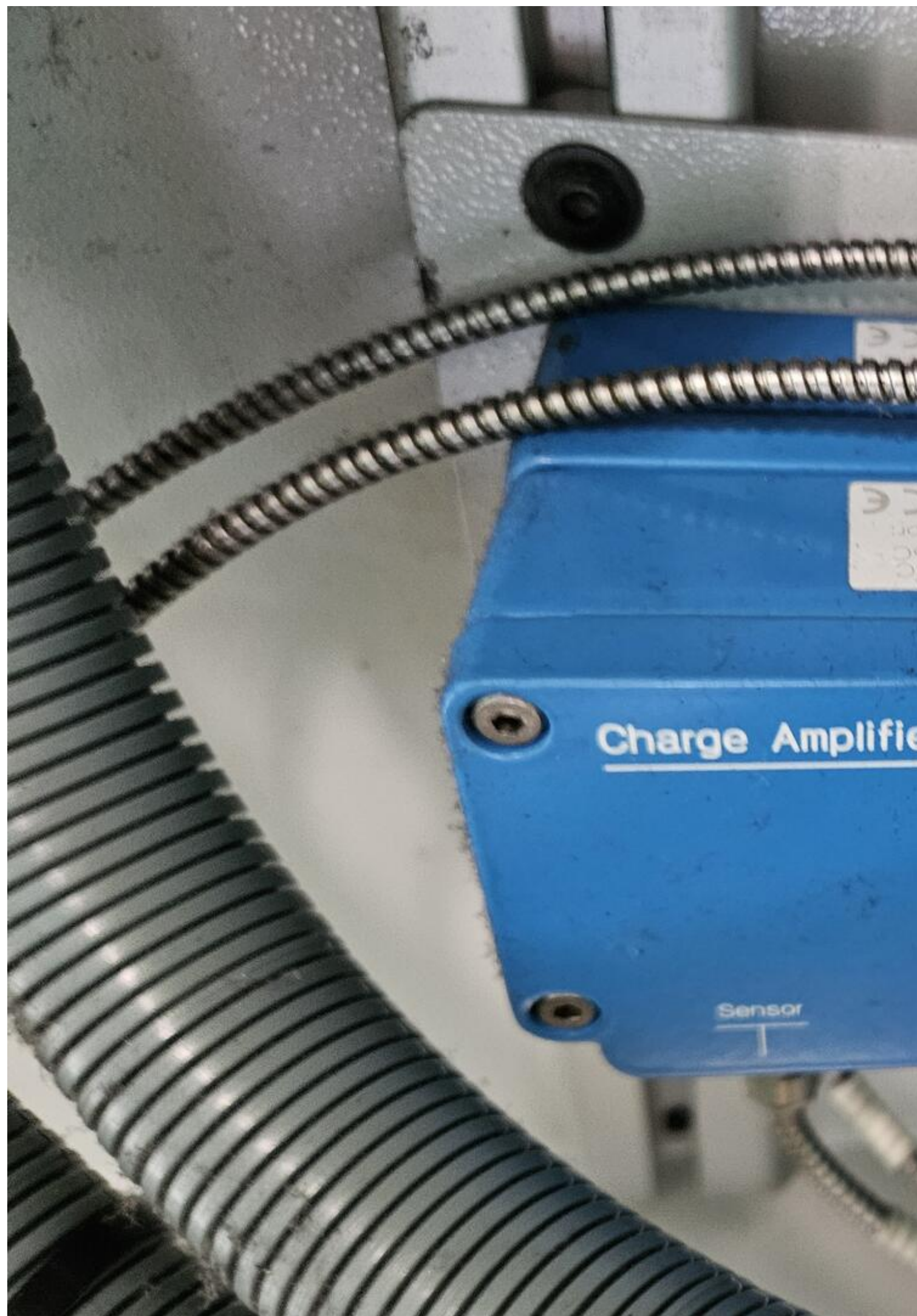










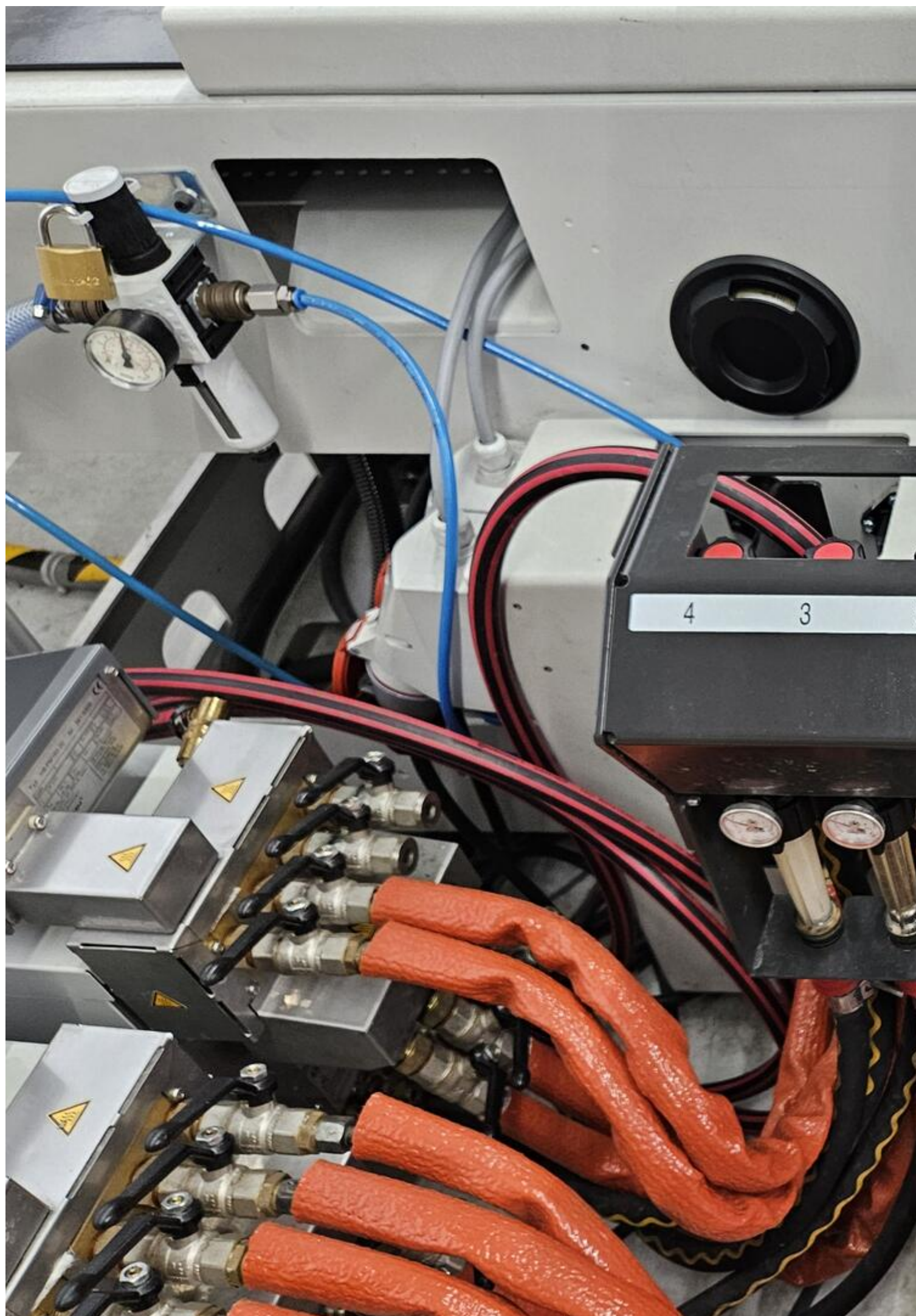


Charge Amplifier

Sensor
T









Asset-Trade

Assessment and Sale of Used Assets world wide

Am Sonnenhof 16

47800 Krefeld

Germany

Tel.: +49 2151 32500 33

Fax.: +49 2151 65 29 22

Email: info@asset-trade.de

Web.: <https://www.asset-trade.de/en>

Ref. No.:

R1440-10041000

Overview and Technical Data:

Arburg Allrounder 1500 T 2000-400 injection molding machine

[ARBURG](#)



Year of Build:
Jan 2015

Description:

Used Arburg Allrounder 1500 T 2000-400 vertical injection molding machine

4x Machines available
from 2x2013 to 2x2015 - Operating Hours from 27528 to 42160 hrs

Technical data:

- Clamping force: 2000 kN
- Screw diameter: 40 mm

- Shot weight: 184 g PS
- Stroke volume: 201 max. cm³
- Injection pressure: 2000 bar
- Plasticizing capacity max: 29 kg/h PS
- Granulate container: 50 liters
- Screw speed: 53 m/min (2 pumps)
- Nozzle pressure: 60 | 400 kN/mm
- Mold height min: 400 mm
- Ejector stroke: 175 mm
- Ejector force forwards/backwards: 25 kN
- Opening force max.: 115 | 300 kN/mm
- Pallet distance fixed: 700 mm
- Turntable
 - Table diameter: 1500 mm
 - Rotation angle left/right: 180°
 - Weight of the movable mold half: 500 kg
 - Max. Weight on the turntable: 1050 kg

Machine still under power

The machine is equipped with 12 zones & 6 circuits and an interface for temperature control units, for remote control.

Charge amplifier “Kistler” for 2 internal pressure sensors.

Additional monitoring system (temperature monitoring) for the start-up parts

Each station is equipped with a core pull and two circuits for temperature control of the molds.

This used vertical Arburg ALLROUNDER injection molding machine was manufactured in 2013 & 2015. It has a clamping force of 2000 kN and a table diameter of 1500 mm. Suitable for different mold sizes. The screw diameter is 40 mm and ensures precise material processing with a maximum injection pressure of 2000 bar.

The Arburg Allrounder 1500 T 2000-400 is ideal for manufacturers looking for a robust and powerful machine and represents a great opportunity.

Contact us for more details on this vertical injection molding machine.

Technical Data:

Technical Data:

Control:

[CNC](#)

Dimensions and Weight:

Height:

2.894 mm

Length:

4.107 mm

Width:

2.648 mm

Weight:

21.500 kg

Buyer Information:

Condition:

[Very good condition](#)

Available:

[Immediately](#)

Sold as:

[EXW \(Ex Works - Incoterm\)](#)

VAT:

[19 %](#)

Buyers Premium:

[18 %](#)

Location:

Germany

Images:















Kenngrößen Maschine

Maschinentyp

150

Maschinenzyklen

1907

Betriebsstunden Pumpe

51

Betriebsstunden Automatik

42

Betriebsstunden Halbautomatik

Maschinentyp

f9000B = 1500 T





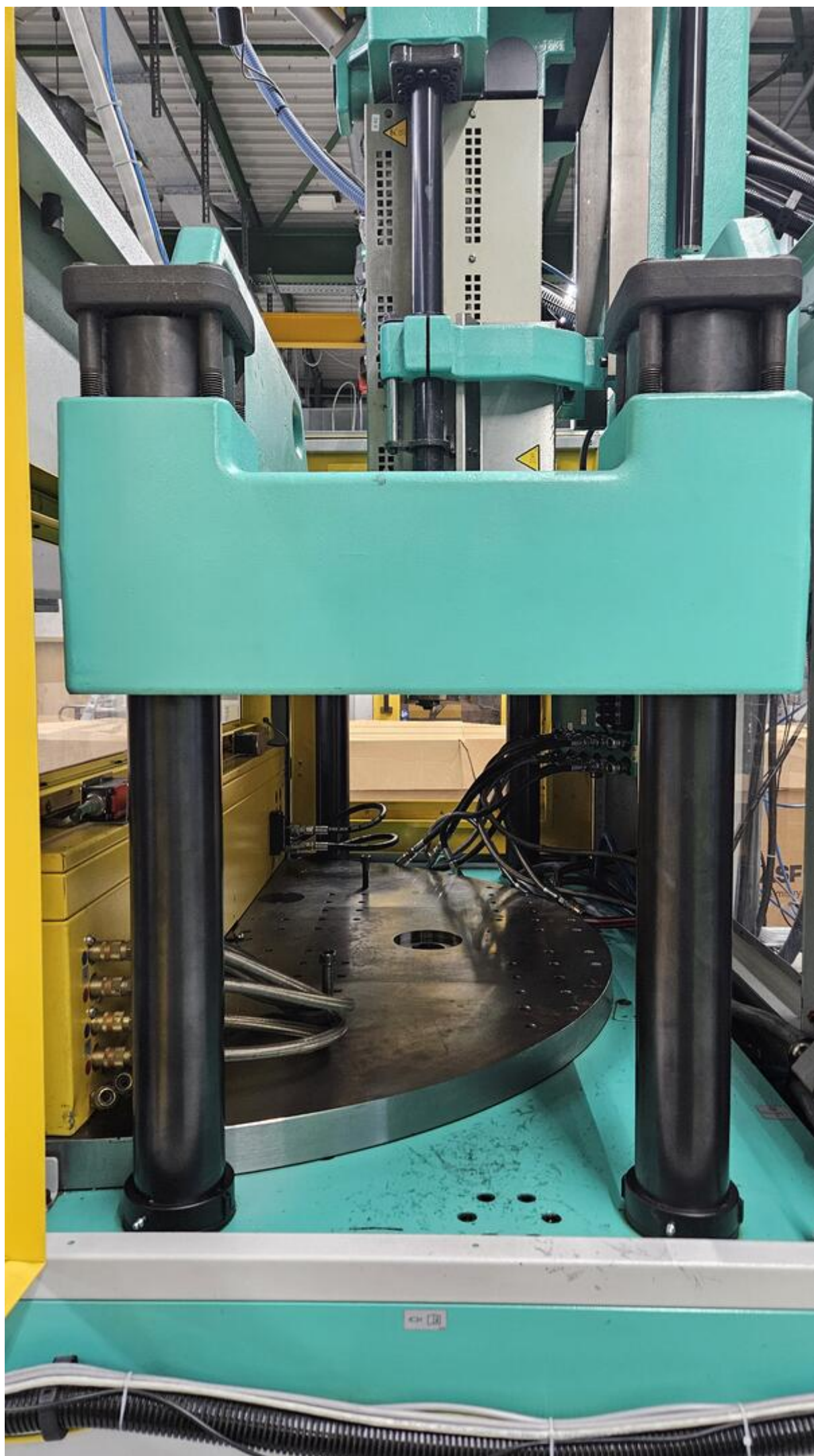




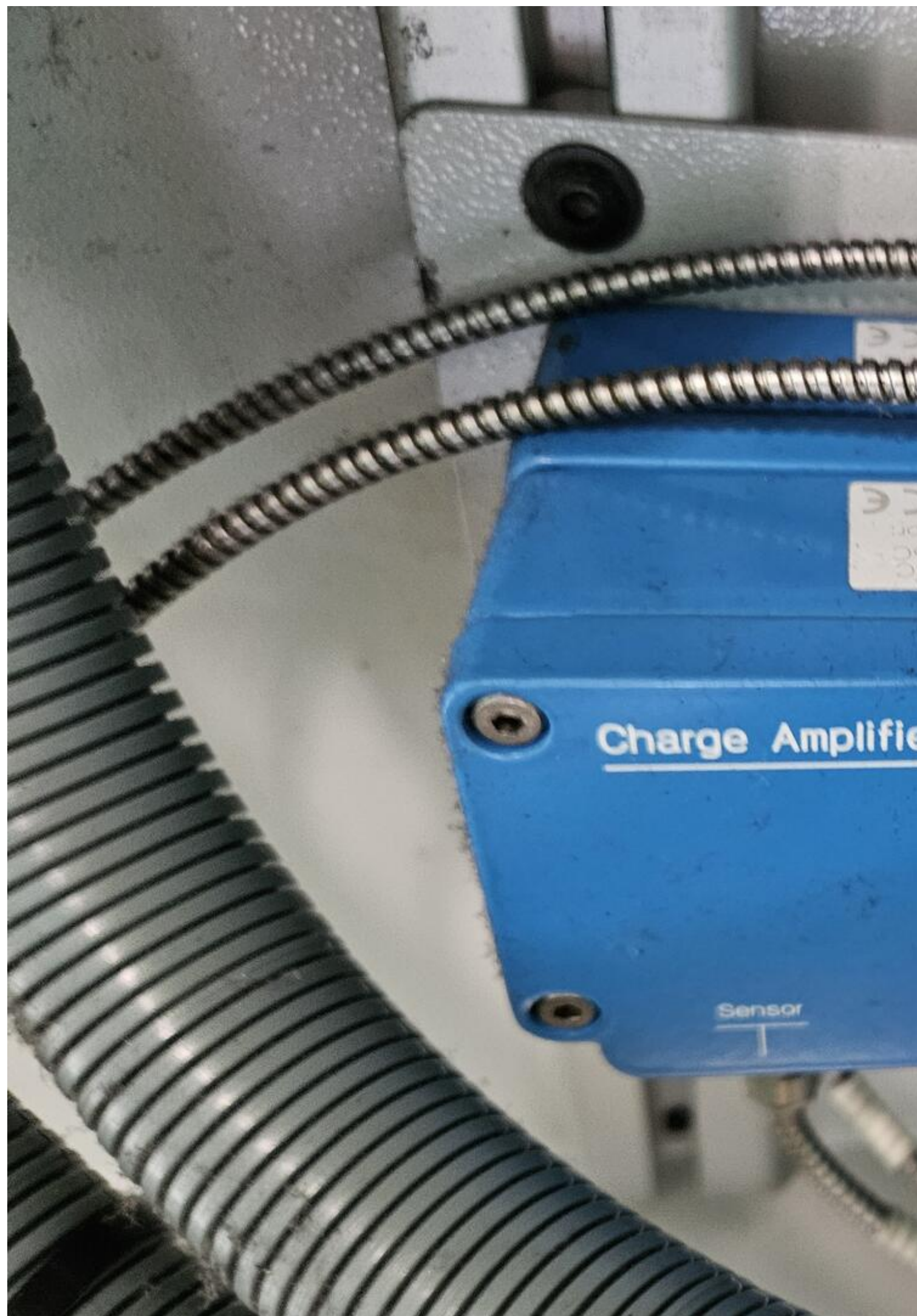










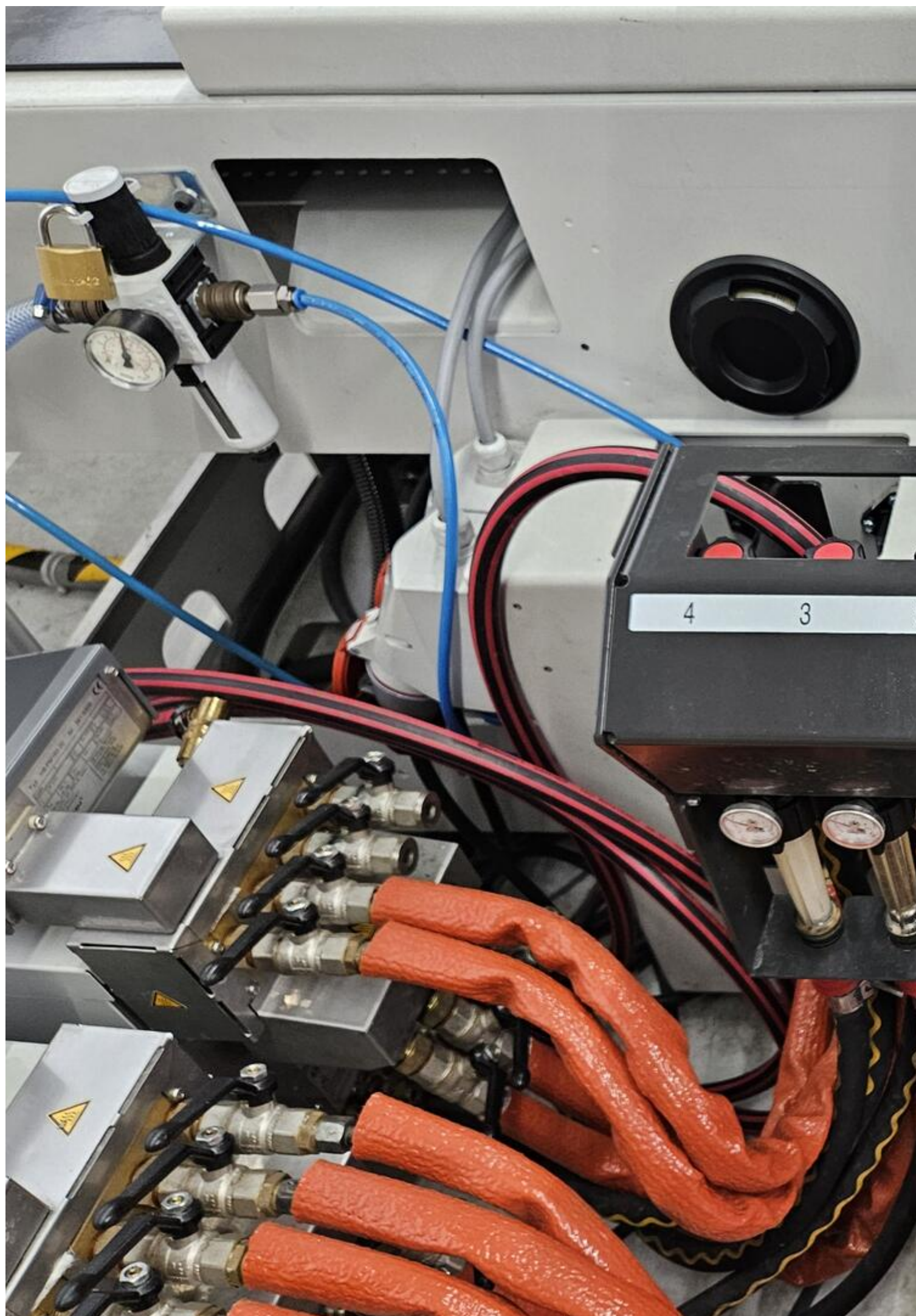


Charge Amplifier

Sensor
T









Asset-Trade

Assessment and Sale of Used Assets world wide

Am Sonnenhof 16

47800 Krefeld

Germany

Tel.: +49 2151 32500 33

Fax.: +49 2151 65 29 22

Email: info@asset-trade.de

Web.: <https://www.asset-trade.de/en>

Generated on 18.12.2025

© Copyright 2025 - [Asset-Trade](#)

Page