



Image not found or type unknown

Ref. No.:

1452-12181835

## Overview and Technical Data:

### Used TOYOTA FH550SX Horizontal Machine Center

[TOYOTA](#)

TOY

Year of Build:

## Description:

# Used TOYODA FH550SX horizontal spindle machining center

Are you looking for a powerful used TOYODA FH550SX? The TOYODA FH550SX horizontal machining center is the ideal choice for companies that need a highly precise and reliable machine for their manufacturing processes. With the Fanuc 32i MB CNC control, this horizontal machining center offers excellent cutting accuracy and high production output.

CNC control: Fanuc 32i MB

Operating hours: approx.

## Technical data of the TOYODA FH550SX horizontal machining center:

- Travel:
    - X-Axis Travel: 750 mm (29.52")
    - Y-Axis Travel: 800 mm (31.50")
    - Z-Axis Travel: 850 mm (33.46")
    - Positioning accuracy:  $\pm 0.003$  mm
  - Axis Specifications:
    - Stroke (X  $\times$  Y  $\times$  Z): 750  $\times$  800  $\times$  850 mm
    - Rapid Feed Rate: 60m/min (X, Y, Z axes)
    - Rapid Acceleration: 1.0G
  - Spindle:
    - Spindle Speed: 6,000 RPM (high-torque)
    - Spindle Taper: BT50
    - Spindle Motor: 30/22kW / Max Torque: 600N·m
  - Tool & Pallet Handling:
    - Tool Change Time (Chip-to-Chip): 2.7s - BT No.50, <15kg tools)
    - Tool Storage Capacity: 60 (Standard)
    - Tool changing time, chip to chip: 3.6– 3.9 s
    - Max. tool dimensions ( $\varnothing$  x length) :  $\varnothing 120$  x 545 mm
    - Pallet Size: 550mm  $\times$  550mm
    - Pallet Load Capacity: 800 kg (1,760 lb)
    - Workpiece Size: Max swing: 7850mm | Max height: 1,000mm#
    - Pallet Change Time: 9.5s
  - Build & Features:
    - Bed Structure: High-grade cast iron, 3-point support for stability and rigidity
    - Drive Technology: Dual ball screw drive (Y/Z-axis for FH550SX, Z-axis for FH550S)
    - Slide Technology: Cylindrical roller slides for improved rigidity and vibration damping
  - Advanced Features:
    - Indexing Table: 90° indexing in 2.0s (standard), 0.7s (optional DD table)
    - Precision Technology: Spindle and ballscrew thermal stabilizers for accuracy in long operations
    - Workability Enhancements: Wide operation doors, touch sensors for alignment
  - Applications:
    - Material Range: Aluminum, castings, iron, and steel
-

The TOYODA FH550SX horizontal machining center offers you reliable horizontal machining center buy options with exceptional precision. The machine is suitable for the heaviest manufacturing requirements and is suitable for a variety of materials such as aluminum, castings, iron and steel.

Thanks to advanced industrial machine trade horizontal center technology, the TOYODA FH550SX ensures high rigidity, exceptional cutting performance and an excellent spindle option to meet your production requirements.

### **Advantages of the TOYODA FH550SX horizontal machining center:**

- High-speed machining and heavy-duty cutting for optimized manufacturing processes
- Precision machining with a positioning accuracy of  $\pm 0.003$  mm
- Extended spindle options for different materials and processes
- Robust and reliable, ideal for long-term operation
- Optimized tool change times for maximum efficiency

### **Why choose the Toyoda FH550S/FH550SX?**

- Best rigidity and cutting performance in its class
- High-speed machining, heavy-duty cutting and precision machining
- Advanced spindle options for different materials and processes
- Reliable, precision-oriented technology with environmentally friendly cooling systems

### **Technical Data:**

### **Technical Data:**

Control:

[Series 32i](#)

Spindle Hours:

98.800 hrs.

Spindle Speed:

6.000 rpm

Tool Holder:

[BT50](#)

Tool Capacity:

60 x

### **Travels:**

X-Axis:

750 mm

Y-Axis:

800mm

Z-Axis:

850 mm

### **Buyer Information:**

Condition:

[Very good condition](#)

Availability:

[Sold](#)

Sold as:

[EXW \(Ex Works - Incoterm\)](#)

VAT:

[19 %](#)

Buyers Premium:

[18 %](#)

Location:

Germany

















CONTROL SYSTEM	
JTEKT CORPORATION	
MACH. No.	TYPE
SUPPLY VOLTAGE	FREQ.
PHASE	FULL LOAD AMP.
I.C. OF CIRCUIT BREAKER	
I.C. OF CONTROL PANEL	
POWER SUPPLY CAPACITY	
AMP. OF LARGEST LOAD	
MAX. BREAKER SIZE	
ELECTRICAL DIAGRAM No.	
DATE	

1-1, Atsuhara-cho, Kurisu, Aichi, Japan

Toyota - NS 3486  
Inventarnummer  
440440254

本製品は、外国為替及び外国貿易法に基づく規制物資に  
該当する場合があります。従って、該物品を日本から輸出  
する場合には、同法に基づく許可が必要とされます。  
The exportation of this product may be subject  
to an authorization from the government of the  
exportation country. Check with the government  
agency for authorization.

再輸出には、御社と当社との間に締結した  
ライセンス契約に基づき、JTEKT  
の承認が必要です。  
For re-export, it is necessary  
to obtain the consent of JTEKT based  
on the license agreement.  
Representative for details.



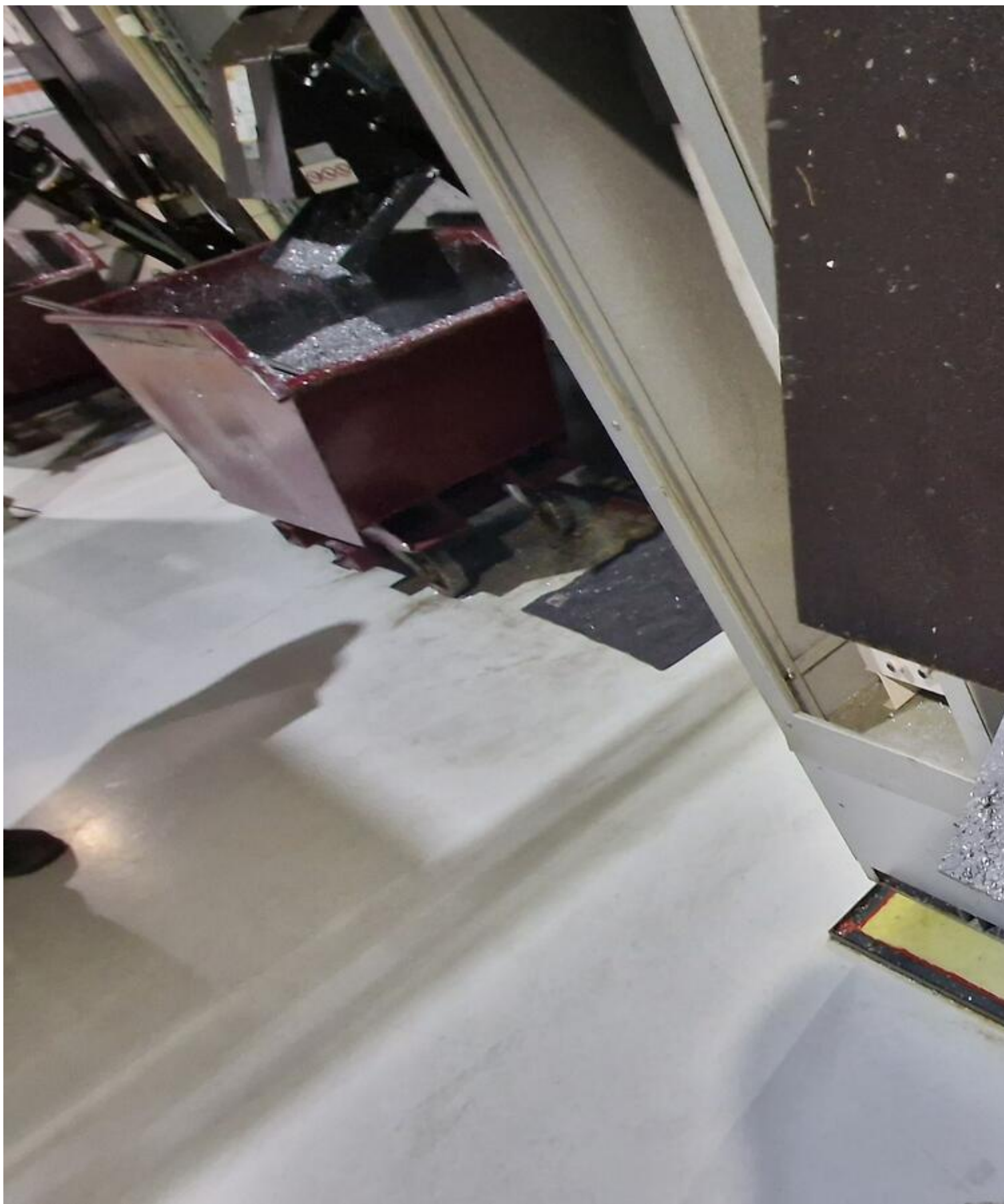


































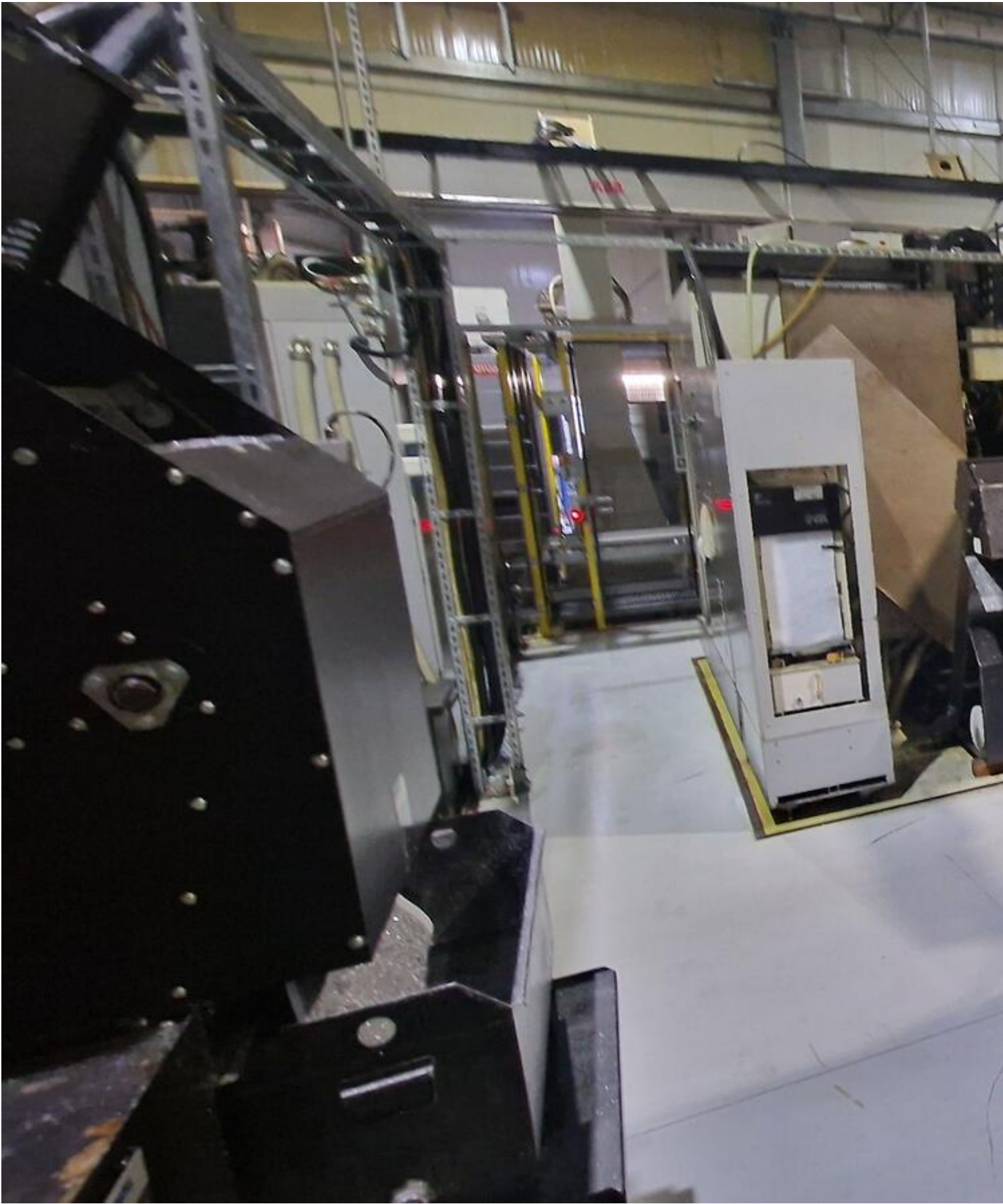
















Asset-Trade

Assessment and Sale of Used Assets world wide

Am Sonnenhof 16

47800 Krefeld

Germany

Tel.: +49 2151 32500 33

Fax.: +49 2151 65 29 22

Email: [info@asset-trade.de](mailto:info@asset-trade.de)

Web.: <https://www.asset-trade.de/en>

Ref. No.:  
1452-12181835

**Overview and Technical Data:**

**Used TOYODA FH550SX Horizontal Machine Center**



TOYODA

TOY

Year of Build:  
Aug 2010

**Description:**

**Used TOYODA FH550SX horizontal spindle machining center**

Are you looking for a powerful used TOYODA FH550SX? The TOYODA FH550SX horizontal machining center is the ideal choice for companies that need a highly precise and reliable machine for their manufacturing processes. With the Fanuc 32i MB CNC control, this horizontal machining center offers excellent cutting accuracy and high production output.

CNC control: Fanuc 32i MB

Operating hours: approx.

### **Technical data of the TOYODA FH550SX horizontal machining center:**

- Travel:
  - X-Axis Travel: 750 mm (29.52")
  - Y-Axis Travel: 800 mm (31.50")
  - Z-Axis Travel: 850 mm (33.46")
  - Positioning accuracy:  $\pm 0.003$  mm
- Axis Specifications:
  - Stroke (X  $\times$  Y  $\times$  Z): 750  $\times$  800  $\times$  850 mm
  - Rapid Feed Rate: 60m/min (X, Y, Z axes)
  - Rapid Acceleration: 1.0G
- Spindle:
  - Spindle Speed: 6,000 RPM (high-torque)
  - Spindle Taper: BT50
  - Spindle Motor: 30/22kW / Max Torque: 600N·m
- Tool & Pallet Handling:
  - Tool Change Time (Chip-to-Chip): 2.7s - BT No.50, <15kg tools)
  - Tool Storage Capacity: 60 (Standard)
  - Tool changing time, chip to chip: 3.6– 3.9 s
  - Max. tool dimensions ( $\varnothing$  x length) :  $\varnothing 120$  x 545 mm
  - Pallet Size: 550mm  $\times$  550mm
  - Pallet Load Capacity: 800 kg (1,760 lb)
  - Workpiece Size: Max swing:  $\varnothing 850$ mm | Max height: 1,000mm#
  - Pallet Change Time: 9.5s
- Build & Features:
  - Bed Structure: High-grade cast iron, 3-point support for stability and rigidity
  - Drive Technology: Dual ball screw drive (Y/Z-axis for FH550SX, Z-axis for FH550S)
  - Slide Technology: Cylindrical roller slides for improved rigidity and vibration damping
- Advanced Features:
  - Indexing Table: 90° indexing in 2.0s (standard), 0.7s (optional DD table)
  - Precision Technology: Spindle and ballscrew thermal stabilizers for accuracy in long operations
  - Workability Enhancements: Wide operation doors, touch sensors for alignment
- Applications:
  - Material Range: Aluminum, castings, iron, and steel

---

The TOYODA FH550SX horizontal machining center offers you reliable horizontal machining center buy options with exceptional precision. The machine is suitable for the heaviest manufacturing requirements and is suitable for a variety of materials such as aluminum, castings, iron and steel.

Thanks to advanced industrial machine trade horizontal center technology, the TOYODA FH550SX ensures high rigidity, exceptional cutting performance and an excellent spindle option to meet your production requirements.

### **Advantages of the TOYODA FH550SX horizontal machining center:**

- High-speed machining and heavy-duty cutting for optimized manufacturing processes
- Precision machining with a positioning accuracy of  $\pm 0.003$  mm
- Extended spindle options for different materials and processes
- Robust and reliable, ideal for long-term operation

- Optimized tool change times for maximum efficiency

## Why choose the Toyota FH550S/FH550SX?

- Best rigidity and cutting performance in its class
- High-speed machining, heavy-duty cutting and precision machining
- Advanced spindle options for different materials and processes
- Reliable, precision-oriented technology with environmentally friendly cooling systems

## Technical Data:

### Technical Data:

Control:

[Series 32i](#)

Spindle Hours:

98.800 hrs.

Spindle Speed:

6.000 rpm

Tool Holder:

[BT50](#)

Tool Capacity:

60 x

### Travels:

X-Axis:

750 mm

Y-Axis:

800mm

Z-Axis:

850 mm

## Buyer Information:

Condition:

[Very good condition](#)

Availability:

[Sold](#)

Sold as:

[EXW \(Ex Works - Incoterm\)](#)

VAT:

[19 %](#)

Buyers Premium:

[18 %](#)

Location:

Germany



















CONTROL SYSTEM	
JTEKT CORPORATION	
MACH. No.	TYPE
SUPPLY VOLTAGE	FREQ.
PHASE	FULL LOAD AMP.
I.C. OF CIRCUIT BREAKER	
I.C. OF CONTROL PANEL	
POWER SUPPLY CAPACITY	
AMP. OF LARGEST LOAD	
MAX. BREAKER SIZE	
ELECTRICAL DIAGRAM No.	
DATE	

1-1, Atsuhara-cho, Kurisu, Aichi, Japan

Toyota - NS 3486  
Inventarnummer  
440440254

本製品は、外国為替及び外国貿易法に基づく規制物資に  
該当する場合があります。従って、該物品を日本から輸出  
する場合には、同法に基づく許可が必要とされます。  
The exportation of this product may be subject  
to an authorization from the government of the  
exportation country. Check with the government  
agency for authorization.

再輸出には、御社と当社との間に締結した  
再輸出契約に基づき、JTEKT 代表者の  
同意が必要です。  
For re-export, it is necessary  
to obtain the consent of JTEKT based  
on the re-export agreement signed  
between JTEKT and the customer.  
Representative for details.







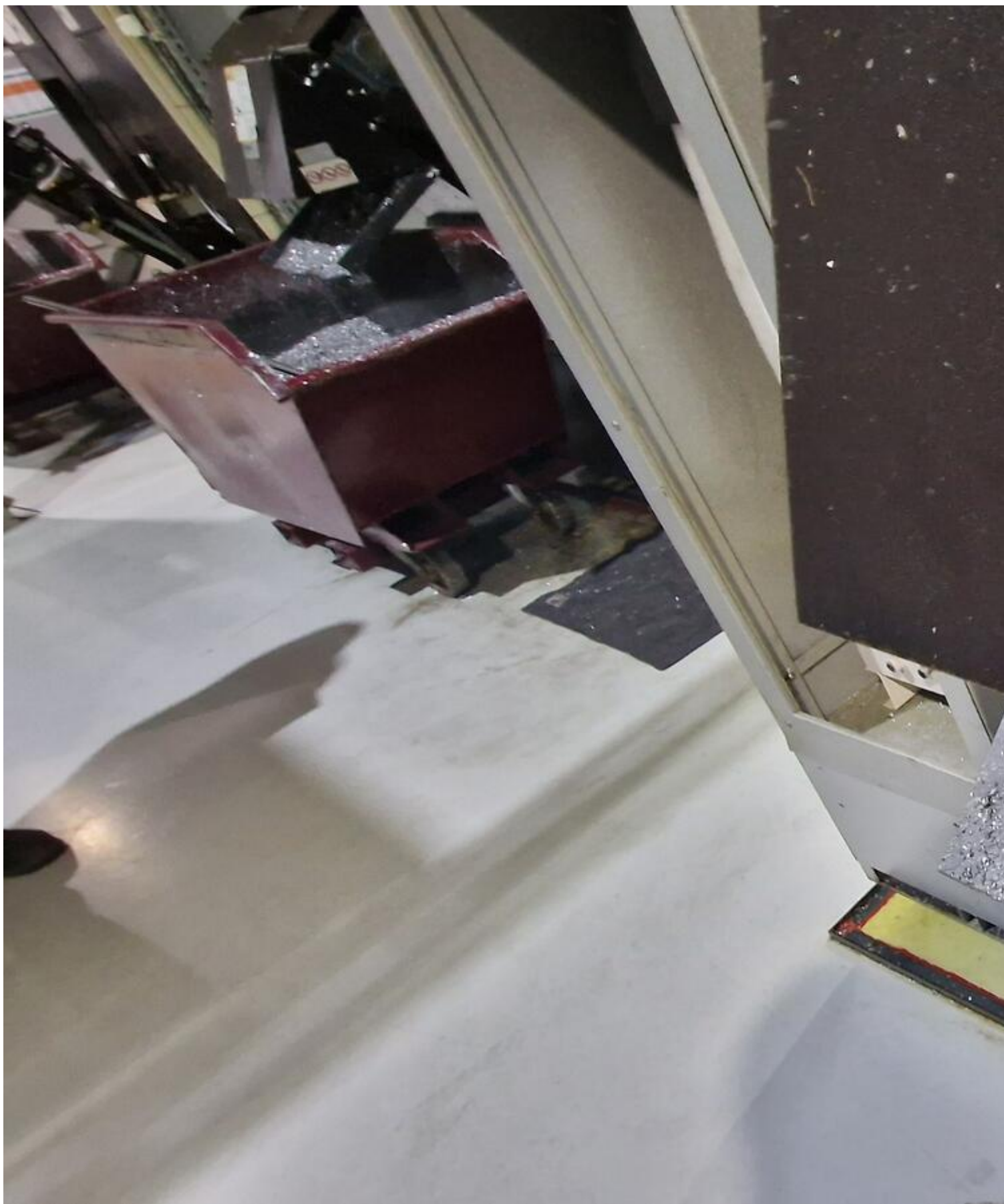
































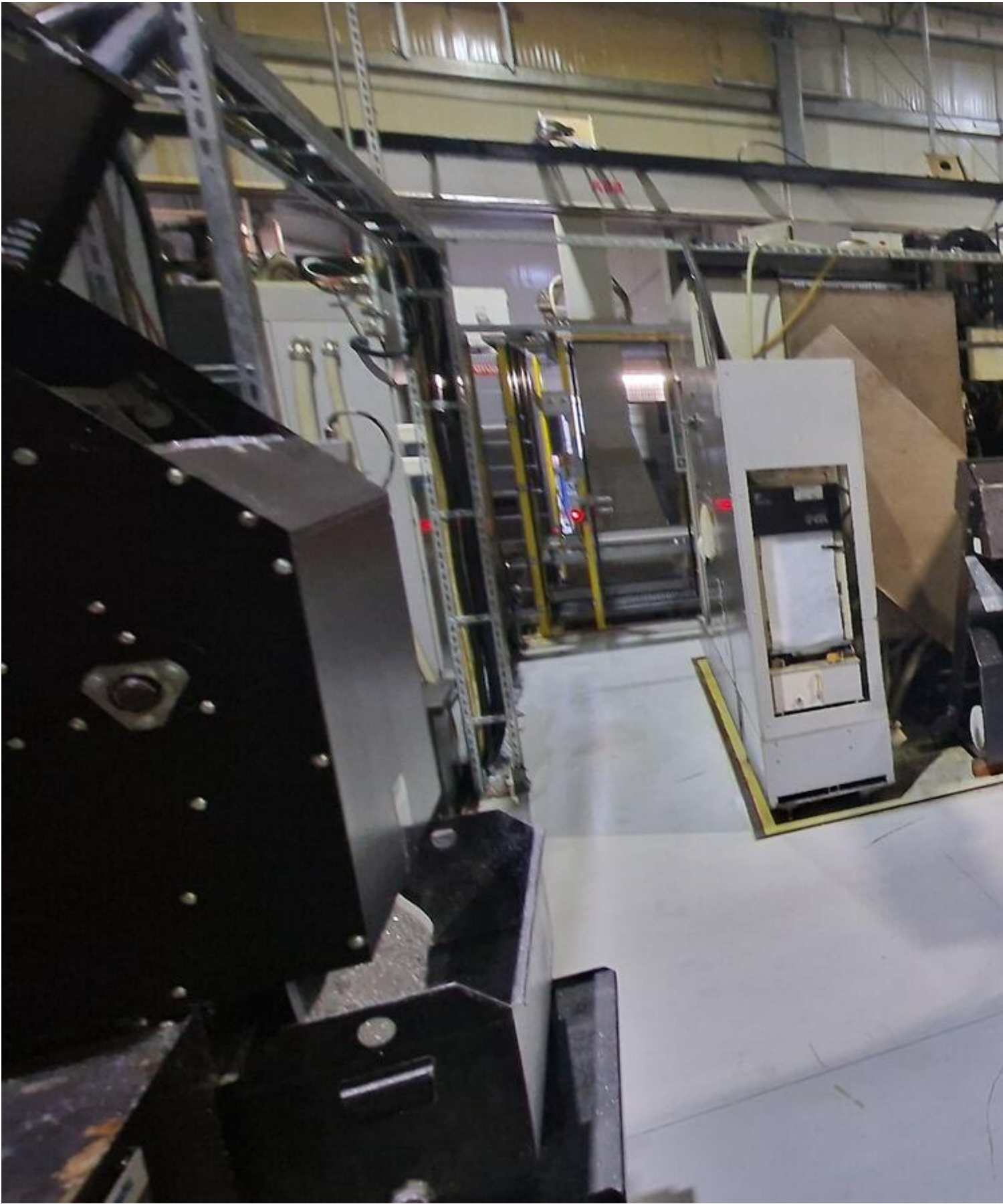




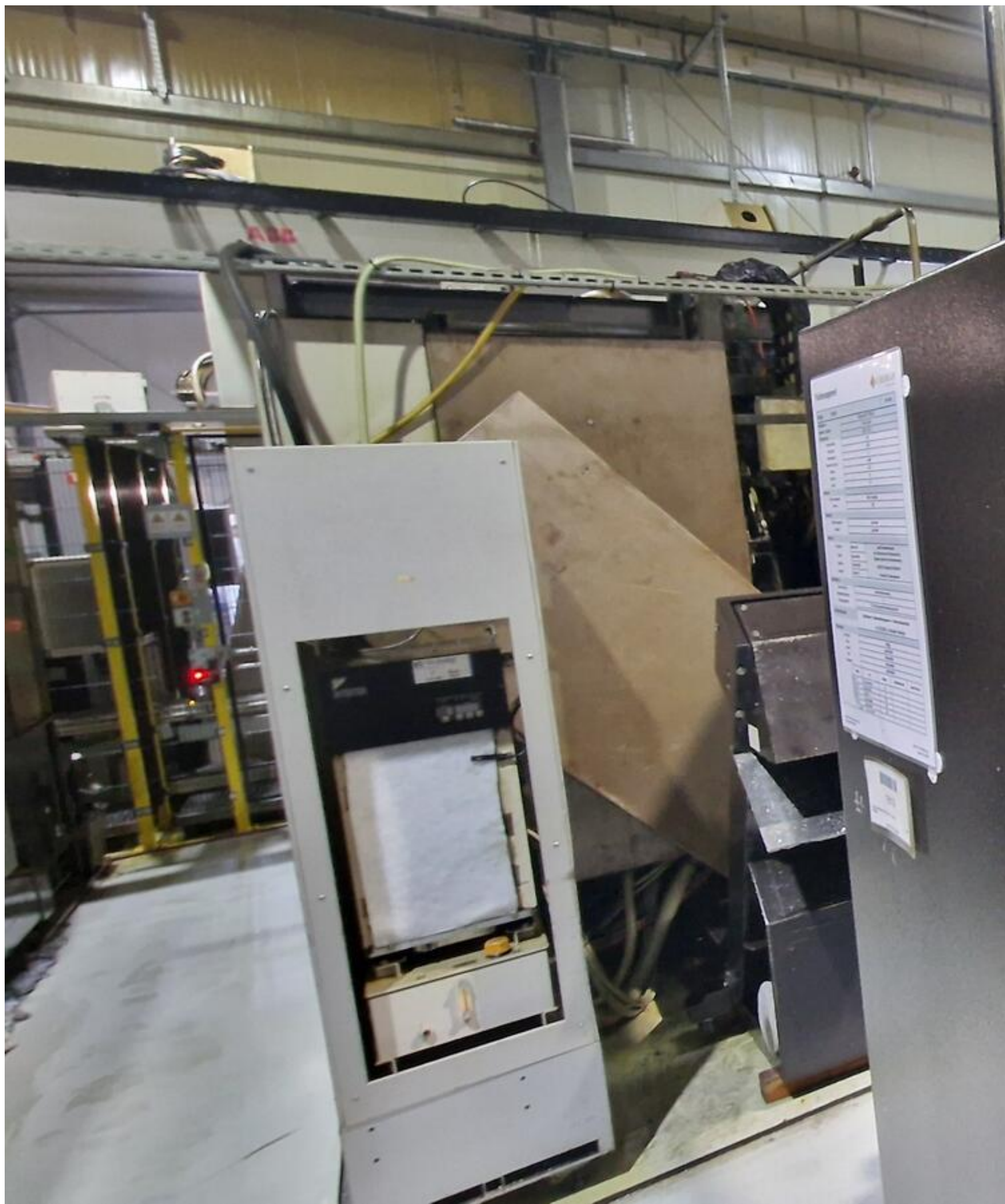














Asset-Trade

Assessment and Sale of Used Assets world wide

Am Sonnenhof 16

47800 Krefeld

Germany

Tel.: +49 2151 32500 33

Fax.: +49 2151 65 29 22

Email: [info@asset-trade.de](mailto:info@asset-trade.de)

Web.: <https://www.asset-trade.de/en>

Generated on 13.12.2025

© Copyright 2025 - [Asset-Trade](#)

Page