



Image not found or type unknown

Ref. No.:

1452-12181925

Overview and Technical Data:

3x Used TOYODA FH 500j Horizontal Machine Center for Sale

[TOYODA](#)

TOY

Year of Build:

Description:

Buy 3x used TOYODA FH 500j horizontal machining centers - High precision and efficiency

Are you looking for high-quality used horizontal machining centers? The used TOYODA FH 500j are ideal for precise machining and versatile applications in various industries. These TOYODA FH 500j horizontal machining centers offer exceptional performance and reliability for your manufacturing needs.

CNC control: Fanuc 32i for precise control and efficient machining.

Technical Data of FH500J Horizontal Machining Center

- **Dimensions of Tool Holder:** 500 mm
- **Rotary Table Positioning Angle:** 0.001°
- **Table Height (Palette):** 1100 mm
- **Travel Ranges:**
 - X-Axis: 730 mm
 - Y-Axis: 730 mm
 - Z-Axis: 850 mm
 - Distance (Spindle Tip to Table Center): 100–950 mm
 - Distance (Spindle Axis to Top of Work Holder): 50–780 mm
- **Feed Rates:**
 - Rapid Traverse (X, Y, Z): 60 m/min
 - Rapid Traverse (B-Axis): 14400°/min
 - Cutting Feed (X, Y, Z): 0.001–30 m/min
- **Spindle for different machining requirements:**
 - Speed Range: 50–15000 RPM
 - Diameter (Inner of Front Bearing): 80 mm
 - Spindle Nose Taper: ISO R297, Taper #40
- **Tool System:**
 - Number of Tools: 60
 - Tool Dimensions: Ø75 × 470 mm
 - Maximum Tool Weight: 8 kg
 - Tool Change Time: 0.9 sec (Tool-to-Tool)
- **Motors:**
 - Spindle Motor: 22/18.5 kW (15 min/Continuous Operation)
 - Hydraulic Pump Motor: 2.2 kW (4 HP)
- **Machine Size and Weight:**
 - Floor Area: 2330 × 4530 mm
 - Machine Weight: 13500 kg
- **Fluid and Air Requirements:**
 - Operating Oil: 18 L
 - Spindle Cooling Oil: 15 L
 - Compressed Air: 800 NL/min (0.4–0.5 MPa)
- **Electrical Connection:** 51 kVA
- **Precision:**
 - Positioning Accuracy: ±0.003 mm

- Repeatability: ± 0.0015 mm
 - **Maximum Load:** 500 kg on the work table.
-

Advantages of the FH500J Horizontal Machining Center

- **High Precision and Reliability**
 - Exceptional positioning accuracy of ± 0.003 mm and repeatability of ± 0.0015 mm ensures precise machining even for complex parts.
 - Durable construction supports a long service life with minimal downtime.
- **Versatile Machining Capabilities**
 - Supports high-speed spindle operations with a range of 50–15,000 RPM, suitable for cutting, drilling, and finishing various materials.
 - Wide tool capacity of 60 tools enhances flexibility for multi-operation jobs.
- **Efficiency and Productivity**
 - Rapid traverse speeds of 60 m/min (X, Y, Z) and a fast tool change time of 0.9 seconds reduce cycle times.
 - The robust table load capacity (up to 500 kg) accommodates large or heavy workpieces.
- **Compact and Space-Saving Design**
 - With a footprint of 2330×4530 mm, the machine fits efficiently in most manufacturing spaces while maintaining excellent functionality.
- **Advanced Motor Performance**
 - A high-powered spindle motor (22/18.5 kW) ensures smooth and powerful machining, even on tough materials.
 - High-speed rotary B-axis ($14,400^\circ/\text{min}$) enables complex angular machining and 4-axis work.
- **Ease of Maintenance**
 - Optimized oil and air systems, with clear sight glasses and maintenance indicators, simplify daily checks.
 - Built-in cooling systems for spindle and control ensure stable operation during long production runs.
- **Flexible Tooling and Standards Compliance**
 - Tool holders comply with JIS BT40 standards, ensuring compatibility with a wide range of tooling options.
 - Meets various safety and operational standards for global export and deployment.

Typical Usage Scenarios for the FH500J Machine

- **Automotive Industry**
 - Ideal for machining complex engine components, gear housings, and other critical automotive parts with high precision.
- **Aerospace Sector**
 - Suited for creating lightweight yet robust parts such as brackets, frames, and connectors with tight tolerances.
- **Industrial Equipment Manufacturing**
 - Supports the production of heavy-duty components like hydraulic pumps, motor housings, and gear assemblies.
- **Tool and Die Making**
 - Facilitates the manufacturing of molds, dies, and tooling equipment requiring intricate designs and surface finishes.

- **General Engineering**
 - Useful in workshops that cater to custom or batch production of machined parts for various industries.
- **Medical Device Manufacturing**
 - Provides the precision needed for creating surgical tools, implants, and diagnostic equipment components.

Why buy a TOYODA FH 500j horizontal machining center?

The used TOYODA FH 500j offers excellent performance and precision for all types of machining projects. Whether you are looking for used horizontal machining centers in Germany or starting a new project, this used horizontal machining center is a reliable and cost-effective solution for your production needs.

Optimize your production with a used TOYODA FH 500j horizontal machining centre from our industrial machinery dealers. Take the opportunity to increase your efficiency with a durable and powerful horizontal machining center.

Technical Data:

Technical Data:

Control:

[Series 32i](#)

Machine Hours:

92.450 hrs.

Spindle Speed:

15.000 rpm

Tool Holder:

[SK40](#)

Tool Capacity:

60 x

Travels:

X-Axis:

730 mm

Y-Axis:

730mm

Z-Axis:

850 mm

Dimensions and Weight:

Width:

4.530 mm

Length:

2.330 mm

Weight:

13.500 kg

Buyer Information:

Condition:

[Very good condition](#)

Availability:

[Sold](#)

Sold as:

[EXW \(Ex Works - Incoterm\)](#)

VAT:

[19 %](#)

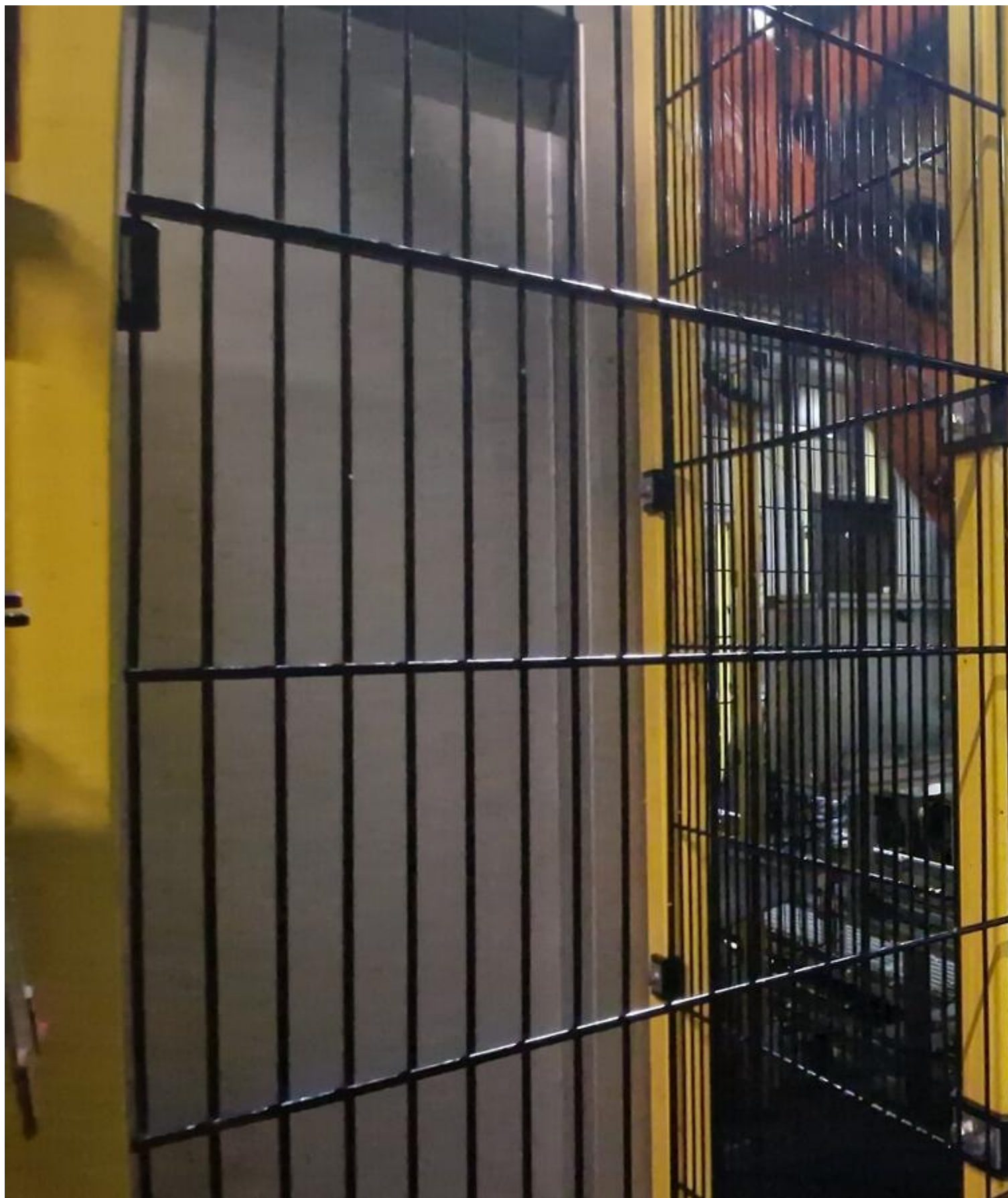
Buyers Premium:

[18 %](#)

Location:

Germany

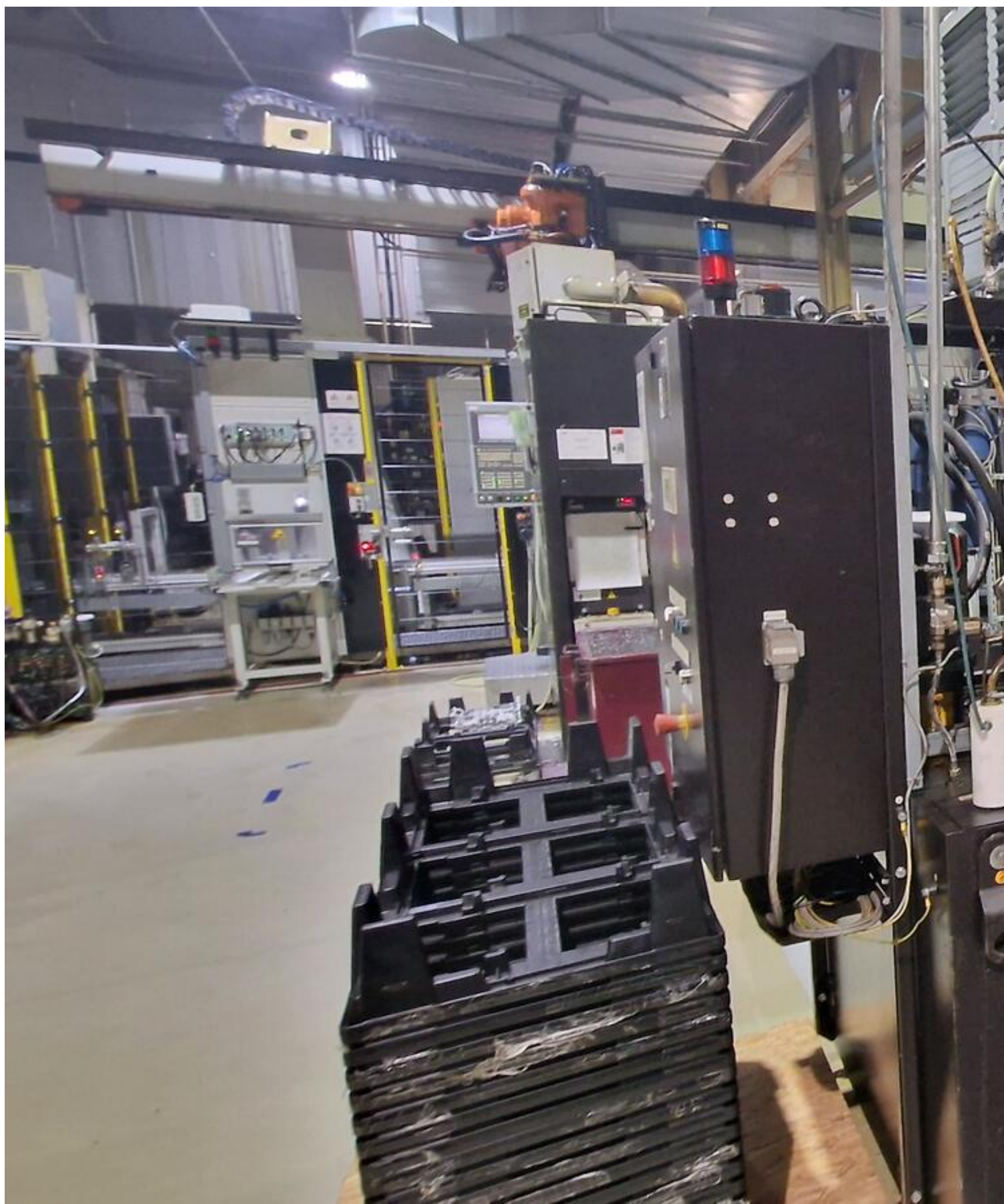
Images:





























GEFAHR
DANGER
DANGER
PERICOLO
DANGER



Werkzeuge und W
sich automatisch

Kann zu Schnitt- und Quet
sogar zum Tode führen.

Diesen Bereich nicht betre
Sicherheitsbestimmungen

Maschine ausschalten, we
Bereich gearbeitet wird.



The machine will r
without warning a

cause severe crushing inju

Do not enter this area unles

Isolate power when workin



Les outils dans l'e
mettre en mouven

avertissement.

Les outils peuvent engendr
blessures.

Ne pas pénétrer dans cett
s'assurer de l'absence de

Couper puissance en cas
cette zone.



Gli utensili e i per
quest'area posso

movimento automaticame
preavviso.

Ciò può causare gravi les

Accedere a quest' area so
sicurezza.

Disinserire l'alimentazion
lavora in quest' area.



Elementos del in
moverse inesper

producir en consecucio
incluso la muerte.

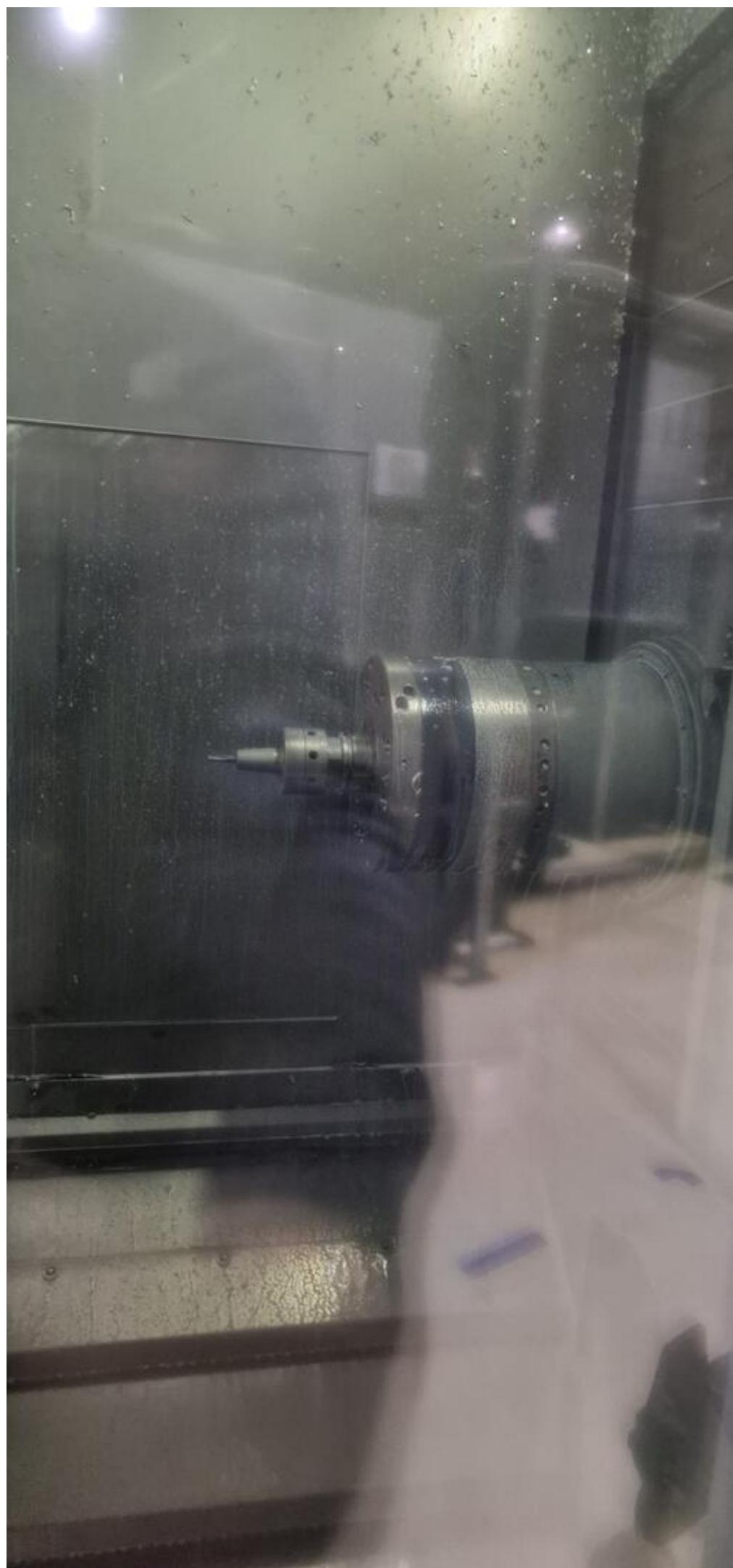
No entren en esta zona
puedan hacer con total

Desconecten la corriente
trabajen en esta zona.







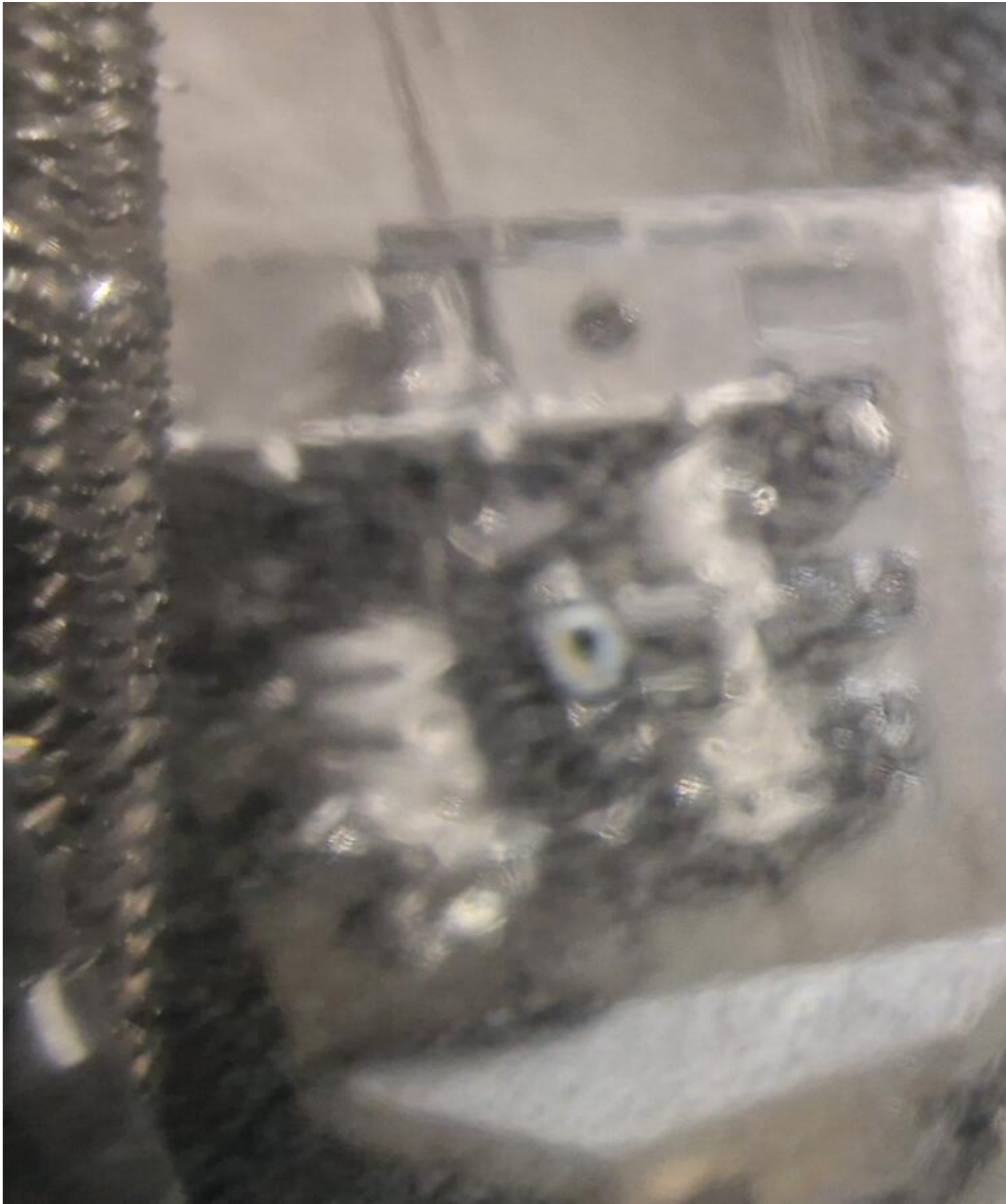






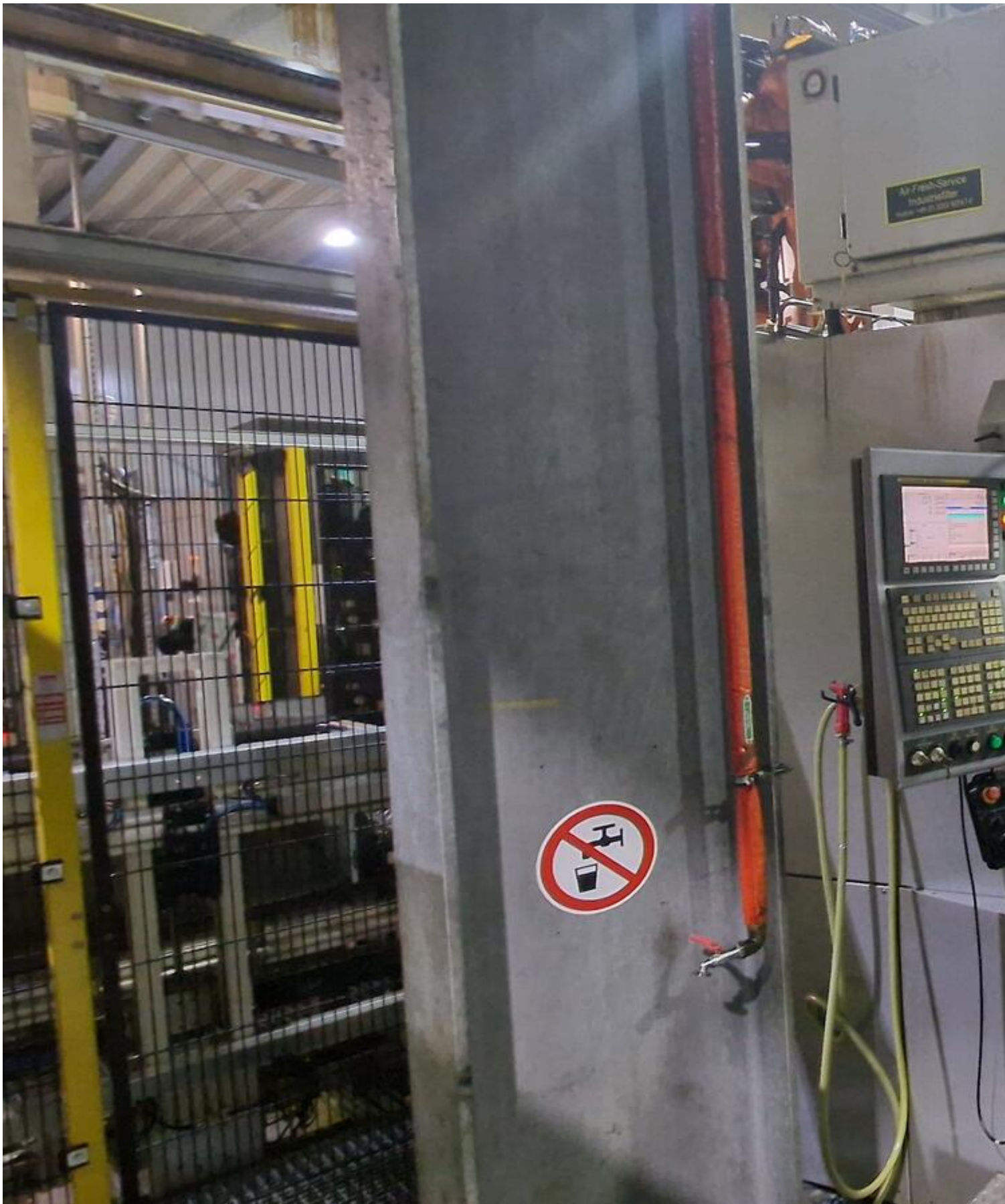






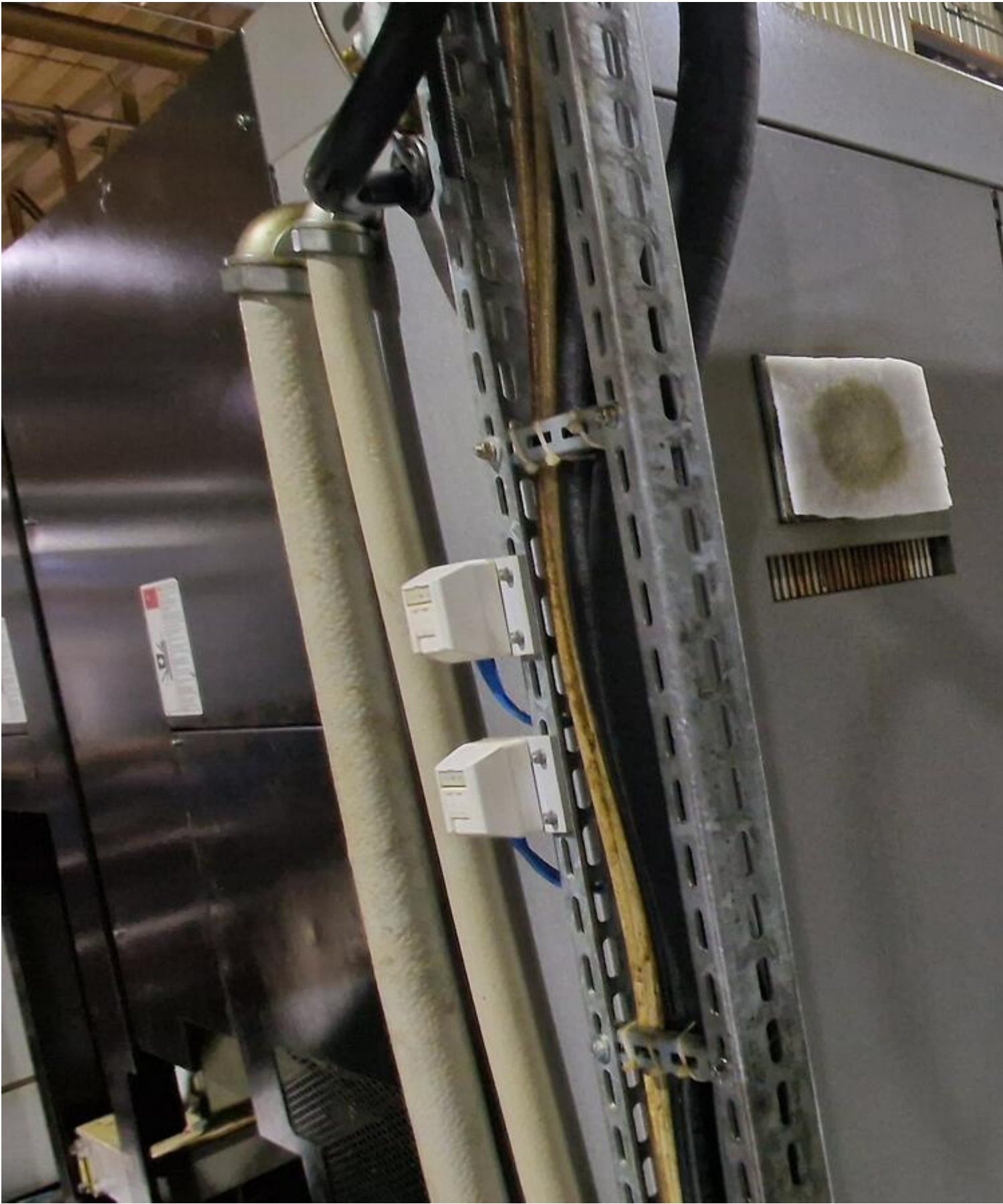










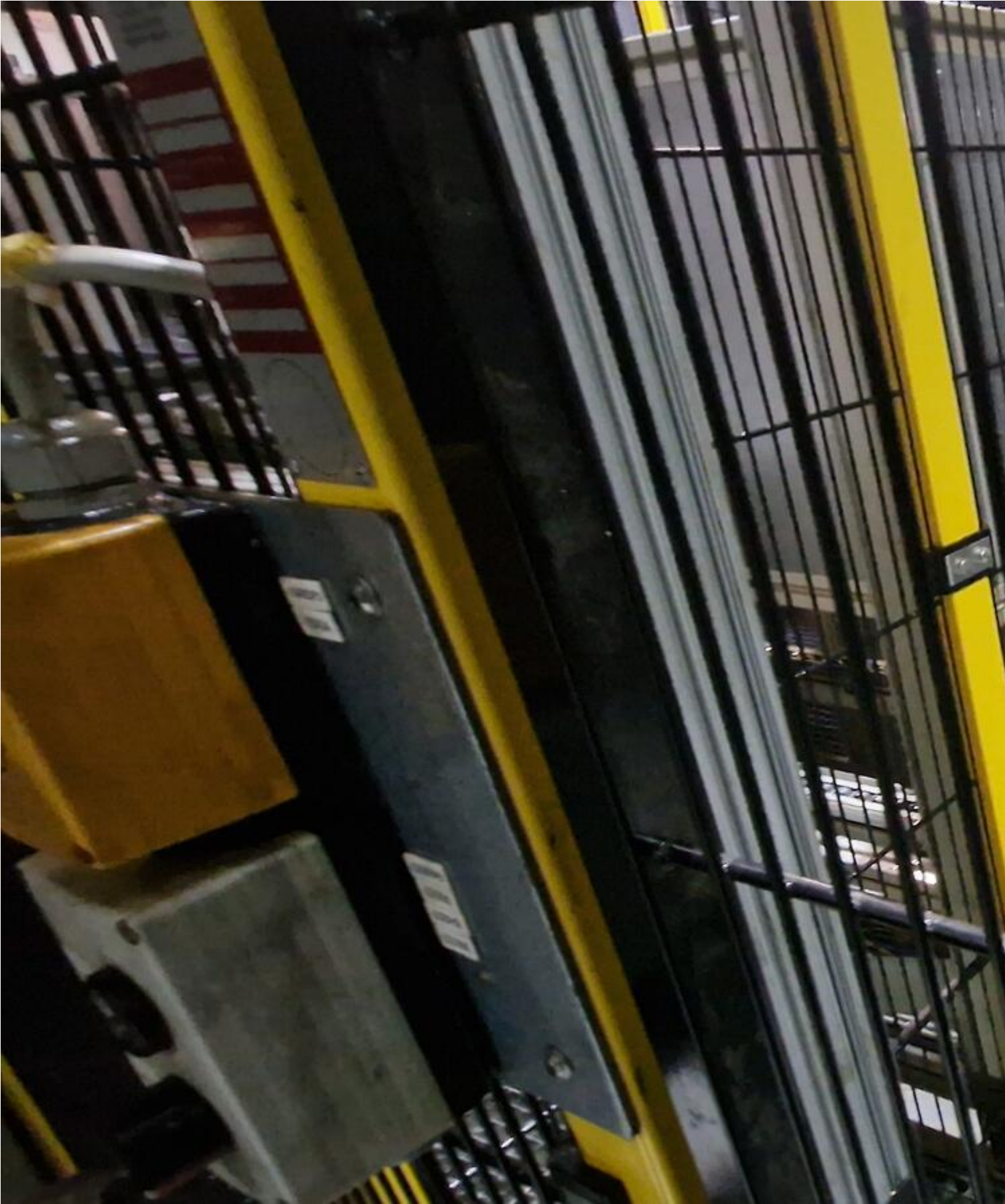














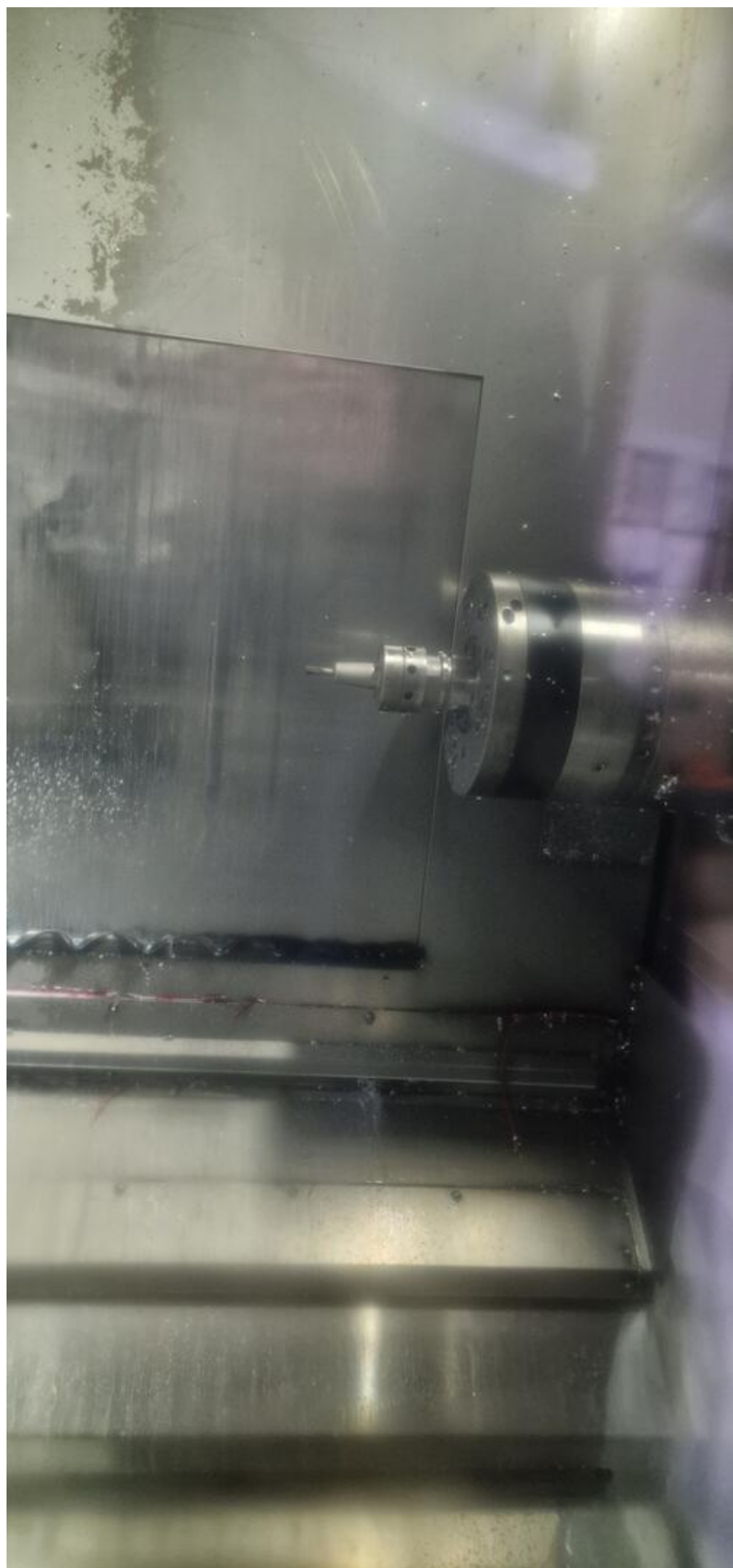


















CONTROL SYSTEM
JTEKT CORPORATION

MACH. No.	TYPE	Hz
SUPPLY VOLTAGE	FREQ.	A
PHASE	FULL LOAD AMP.	kA
I.C. OF CIRCUIT BREAKER		kA
SCCR OF CONTROL PANEL		kVA
POWER SUPPLY CAPACITY		A
AMP. OF LARGEST LOAD		A
MAX. BREAKER SIZE		
ELECTRICAL DIAGRAM No.		
DATE		

I-1, Asahimachi, Kariya, Aichi, Japan

Toyoda - NS 3494
Inventarnummer
440440262

440440262



本製品は、外国為替及び外国貿易法に基づく規制措置等に該当する商品が
あります。従って、該商品を日本から輸出する場合には、同法に基づき
許可が必要とされます。再輸出等を行う場合には、弊社と当社との契約に基づき
再移動、再販売、再輸出が必要となりますので、シェイプドへ必ず連絡下さい。
The exportation of this product may be subject to an
authorization from the government agency for exportation country.
Check with the government agency for authorization.
In case of re-transfer, re-sale or re-export, it is necessary
for you to obtain a prior written consent of JTEKT.
On the agreement of your company and JTEKT,
Please contact your JTEKT representative for details.















Asset-Trade

Assessment and Sale of Used Assets world wide

Am Sonnenhof 16

47800 Krefeld

Germany

Tel.: +49 2151 32500 33

Fax.: +49 2151 65 29 22

Email: info@asset-trade.de

Web.: <https://www.asset-trade.de/en>

Ref. No.:
1452-12181925

Overview and Technical Data:

3x Used TOYODA FH 500j Horizontal Machine Center for Sale

TOYODA

TOY

Year of Build:
Sep 2010

Description:

Buy 3x used TOYODA FH 500j horizontal machining centers - High precision and efficiency

Are you looking for high-quality used horizontal machining centers? The used TOYODA FH 500j are ideal for precise machining and versatile applications in various industries. These TOYODA FH 500j horizontal machining centers offer exceptional performance and reliability for your manufacturing needs.

CNC control: Fanuc 32i for precise control and efficient machining.

Technical Data of FH500J Horizontal Machining Center

- **Dimensions of Tool Holder:** 500 mm
 - **Rotary Table Positioning Angle:** 0.001°
 - **Table Height (Palette):** 1100 mm
 - **Travel Ranges:**
 - X-Axis: 730 mm
 - Y-Axis: 730 mm
 - Z-Axis: 850 mm
 - Distance (Spindle Tip to Table Center): 100–950 mm
 - Distance (Spindle Axis to Top of Work Holder): 50–780 mm
 - **Feed Rates:**
 - Rapid Traverse (X, Y, Z): 60 m/min
 - Rapid Traverse (B-Axis): 14400°/min
 - Cutting Feed (X, Y, Z): 0.001–30 m/min
 - **Spindle for different machining requirements:**
 - Speed Range: 50–15000 RPM
 - Diameter (Inner of Front Bearing): 80 mm
 - Spindle Nose Taper: ISO R297, Taper #40
 - **Tool System:**
 - Number of Tools: 60
 - Tool Dimensions: Ø75 × 470 mm
 - Maximum Tool Weight: 8 kg
 - Tool Change Time: 0.9 sec (Tool-to-Tool)
 - **Motors:**
 - Spindle Motor: 22/18.5 kW (15 min/Continuous Operation)
 - Hydraulic Pump Motor: 2.2 kW (4 HP)
 - **Machine Size and Weight:**
 - Floor Area: 2330 × 4530 mm
 - Machine Weight: 13500 kg
 - **Fluid and Air Requirements:**
 - Operating Oil: 18 L
 - Spindle Cooling Oil: 15 L
 - Compressed Air: 800 NL/min (0.4–0.5 MPa)
 - **Electrical Connection:** 51 kVA
 - **Precision:**
 - Positioning Accuracy: ±0.003 mm
 - Repeatability: ±0.0015 mm
 - **Maximum Load:** 500 kg on the work table.
-

Advantages of the FH500J Horizontal Machining Center

- **High Precision and Reliability**
 - Exceptional positioning accuracy of ±0.003 mm and repeatability of ±0.0015 mm ensures precise machining even for complex parts.
 - Durable construction supports a long service life with minimal downtime.
- **Versatile Machining Capabilities**
 - Supports high-speed spindle operations with a range of 50–15,000 RPM, suitable for cutting, drilling, and finishing various materials.

- Wide tool capacity of 60 tools enhances flexibility for multi-operation jobs.
- **Efficiency and Productivity**
 - Rapid traverse speeds of 60 m/min (X, Y, Z) and a fast tool change time of 0.9 seconds reduce cycle times.
 - The robust table load capacity (up to 500 kg) accommodates large or heavy workpieces.
- **Compact and Space-Saving Design**
 - With a footprint of 2330 × 4530 mm, the machine fits efficiently in most manufacturing spaces while maintaining excellent functionality.
- **Advanced Motor Performance**
 - A high-powered spindle motor (22/18.5 kW) ensures smooth and powerful machining, even on tough materials.
 - High-speed rotary B-axis (14,400°/min) enables complex angular machining and 4-axis work.
- **Ease of Maintenance**
 - Optimized oil and air systems, with clear sight glasses and maintenance indicators, simplify daily checks.
 - Built-in cooling systems for spindle and control ensure stable operation during long production runs.
- **Flexible Tooling and Standards Compliance**
 - Tool holders comply with JIS BT40 standards, ensuring compatibility with a wide range of tooling options.
 - Meets various safety and operational standards for global export and deployment.

Typical Usage Scenarios for the FH500J Machine

- **Automotive Industry**
 - Ideal for machining complex engine components, gear housings, and other critical automotive parts with high precision.
- **Aerospace Sector**
 - Suited for creating lightweight yet robust parts such as brackets, frames, and connectors with tight tolerances.
- **Industrial Equipment Manufacturing**
 - Supports the production of heavy-duty components like hydraulic pumps, motor housings, and gear assemblies.
- **Tool and Die Making**
 - Facilitates the manufacturing of molds, dies, and tooling equipment requiring intricate designs and surface finishes.
- **General Engineering**
 - Useful in workshops that cater to custom or batch production of machined parts for various industries.
- **Medical Device Manufacturing**
 - Provides the precision needed for creating surgical tools, implants, and diagnostic equipment components.

Why buy a TOYODA FH 500j horizontal machining center?

The used TOYODA FH 500j offers excellent performance and precision for all types of machining projects. Whether you are looking for used horizontal machining centers in Germany or starting a new project, this used horizontal machining center is a reliable and cost-effective solution for your production needs.

Optimize your production with a used TOYODA FH 500j horizontal machining centre from our industrial machinery dealers. Take the opportunity to increase your efficiency with a durable and powerful horizontal machining center.

Technical Data:

Technical Data:

Control:

[Series 32i](#)

Machine Hours:

92.450 hrs.

Spindle Speed:

15.000 rpm

Tool Holder:

[SK40](#)

Tool Capacity:

60 x

Travels:

X-Axis:

730 mm

Y-Axis:

730mm

Z-Axis:

850 mm

Dimensions and Weight:

Width:

4.530 mm

Length:

2.330 mm

Weight:

13.500 kg

Buyer Information:

Condition:

[Very good condition](#)

Availability:

[Sold](#)

Sold as:

[EXW \(Ex Works - Incoterm\)](#)

VAT:

[19 %](#)

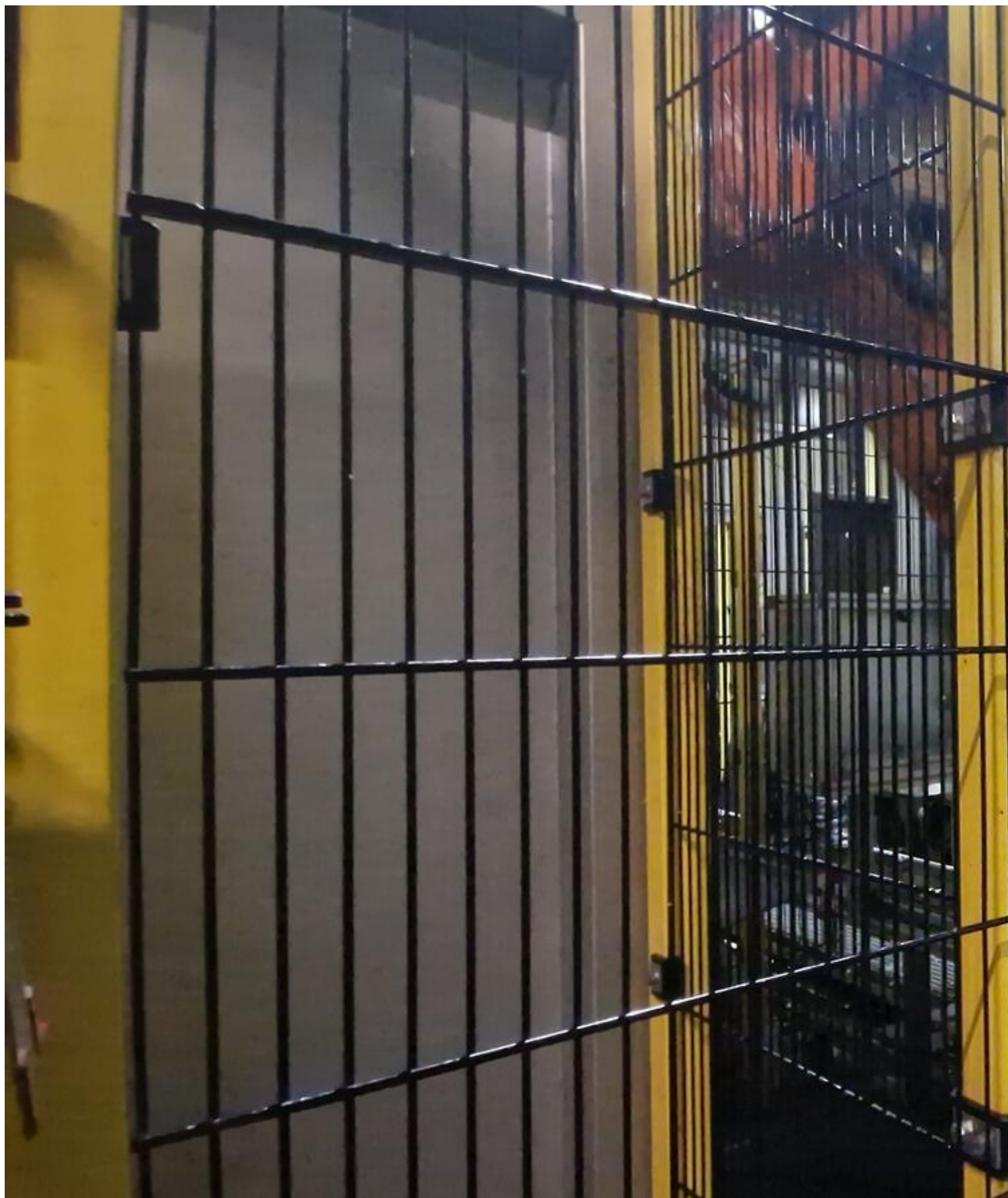
Buyers Premium:

[18 %](#)

Location:

Germany

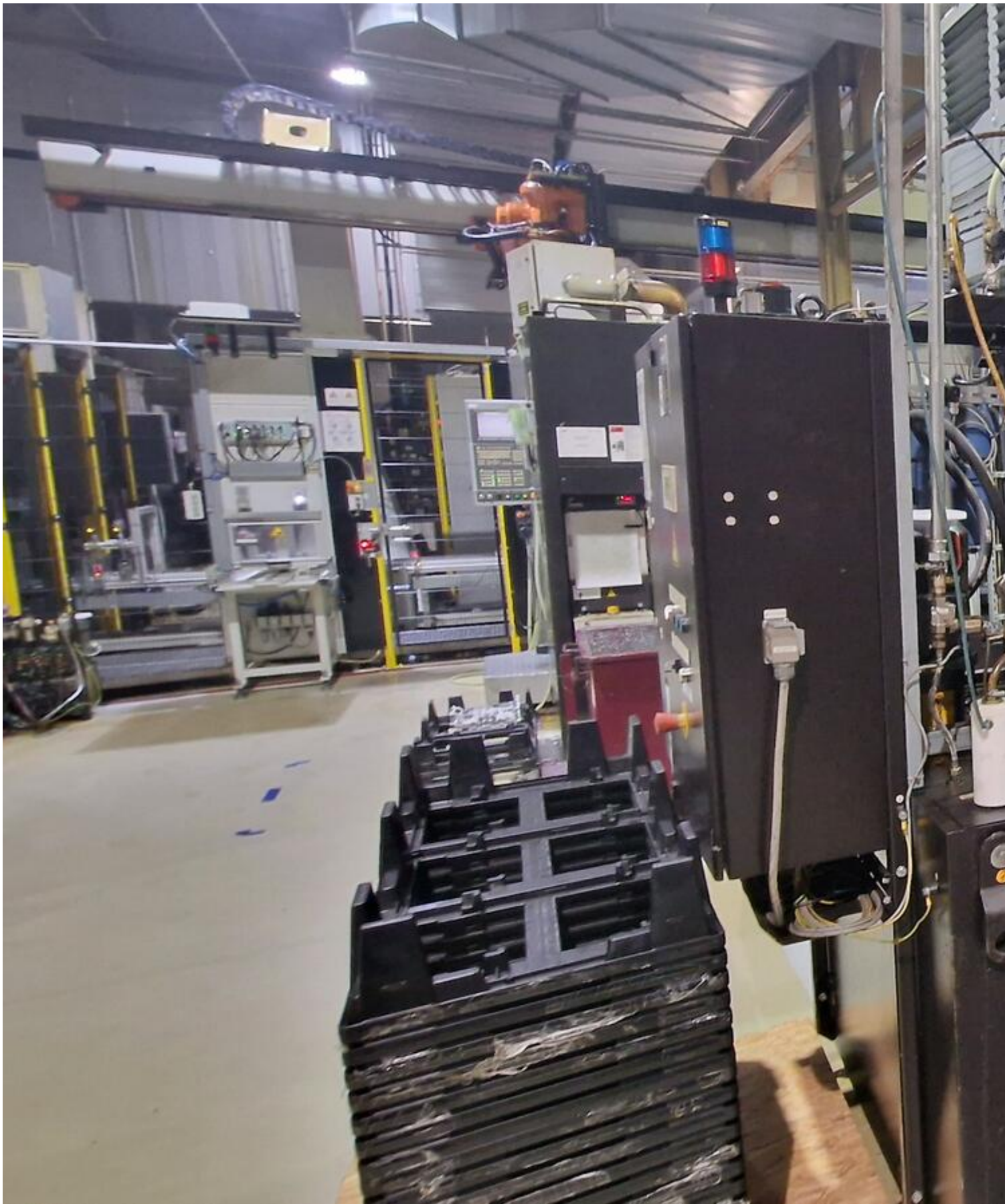
Images:





























GEFAHR
DANGER
DANGER
PERICOLO
DANGER



Werkzeuge und W
sich automatisch

Kann zu Schnitt- und Quet
sogar zum Tode führen.

Diesen Bereich nicht betre
Sicherheitsbestimmungen

Maschine ausschalten, we
Bereich gearbeitet wird.



The machine will r
without warning a
cause severe crushing inju

Do not enter this area unles

Isolate power when working



Les outils dans l'e
mettre en mouven
avertissement.

Les outils peuvent engendr
blessures.

Ne pas pénétrer dans cett
s'assurer de l'absence de

Couper puissance en cas
cette zone.



Gli utensili e i per
quest'area posso
movimento automaticame
preavviso.

Ciò può causare gravi les

Accedere a quest' area so

sicurezza.

Disinserire l'alimentazion
lavora in quest' area.



Elementos del in
moverse inesper

producir en consecuen
incluso la muerte.

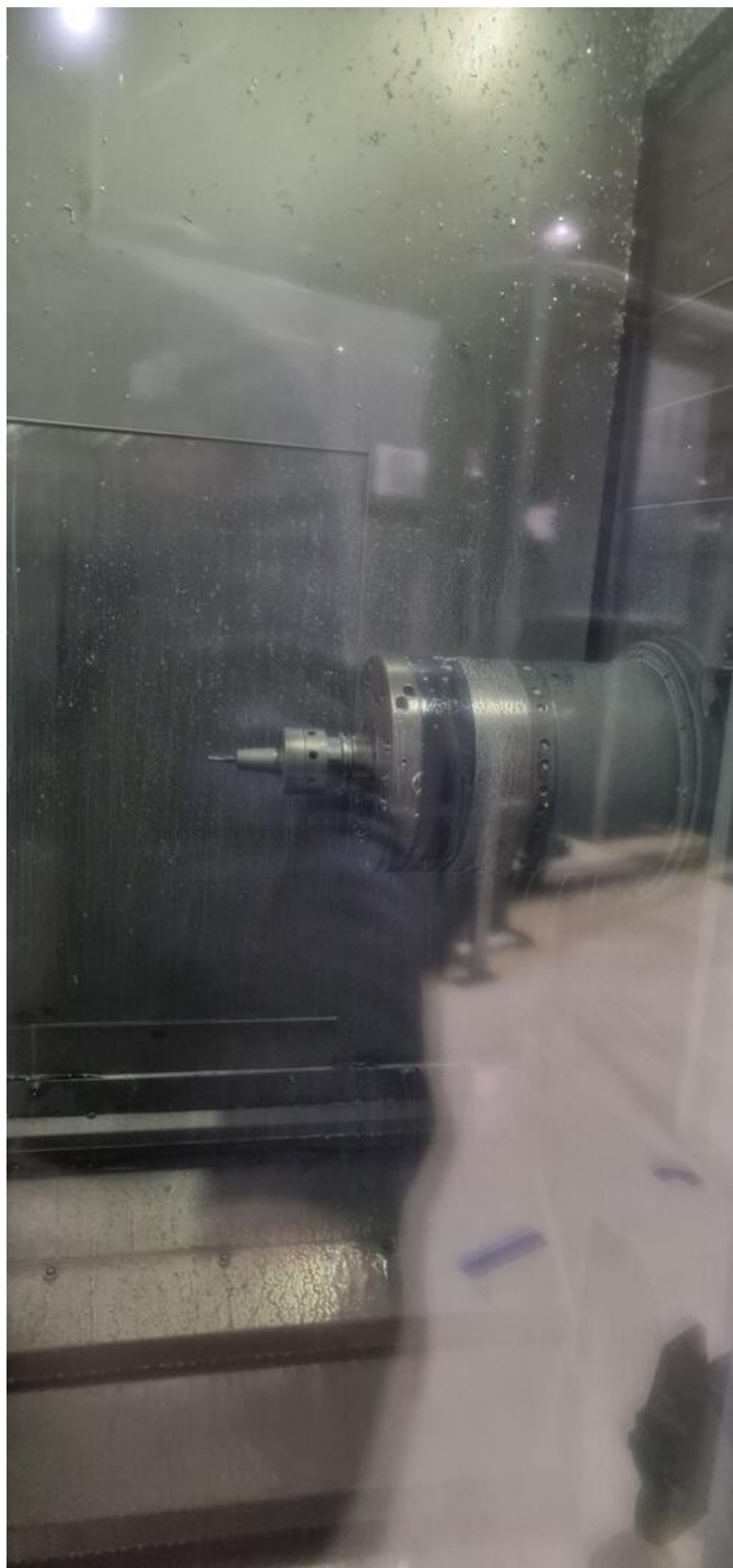
No entren en esta zona
puedan hacer con total

Desconecten la corriente
trabajen en esta zona.







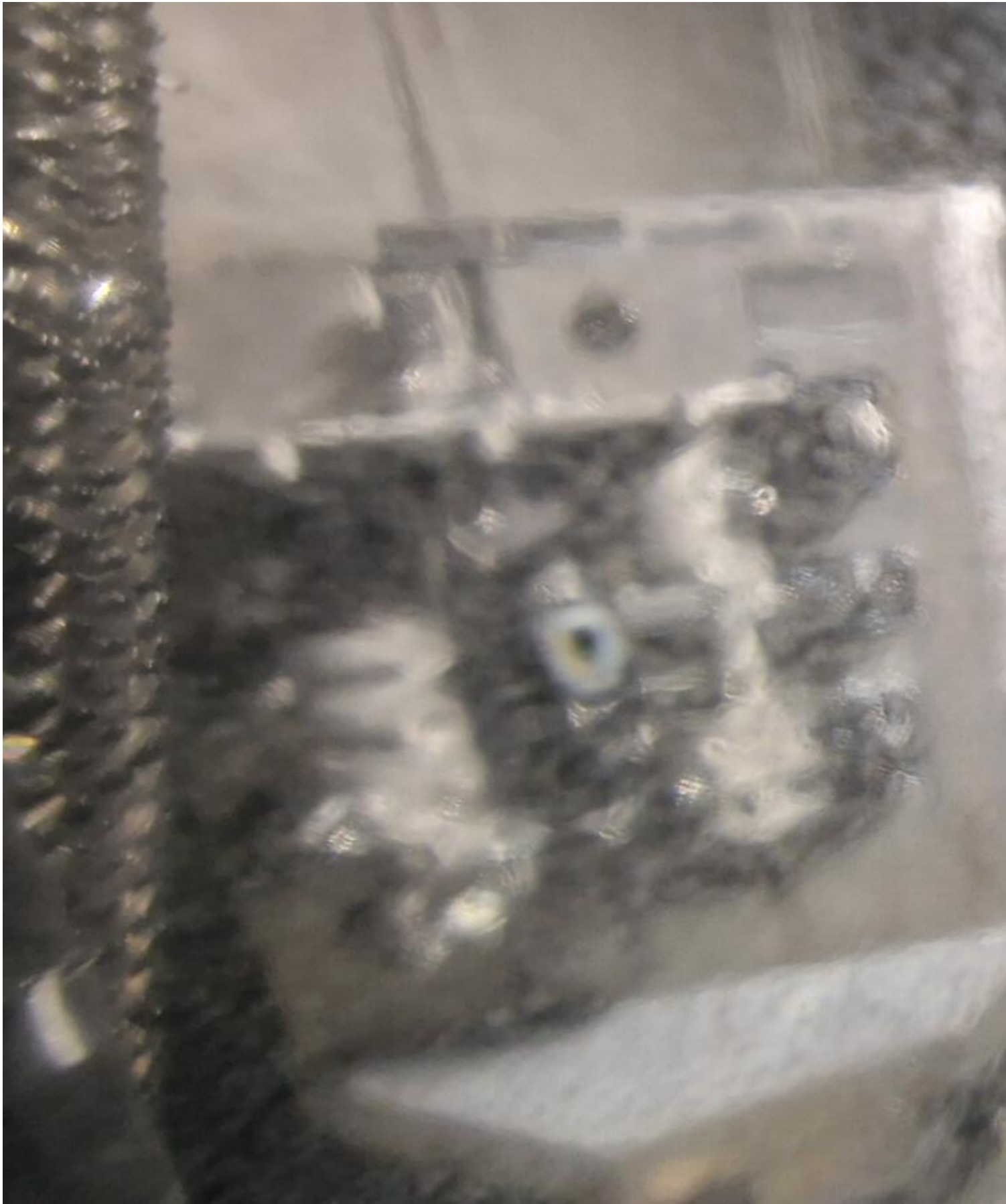






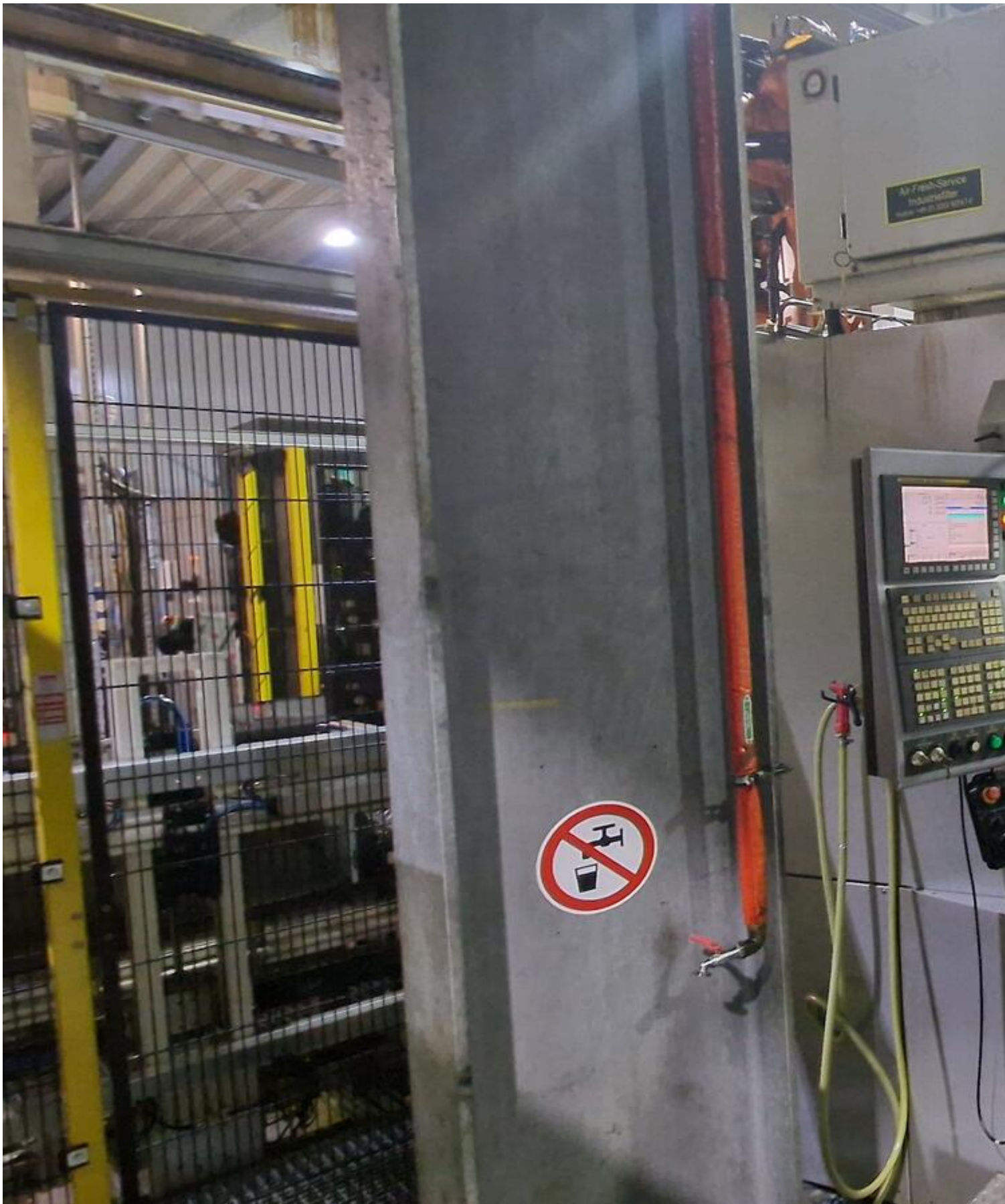






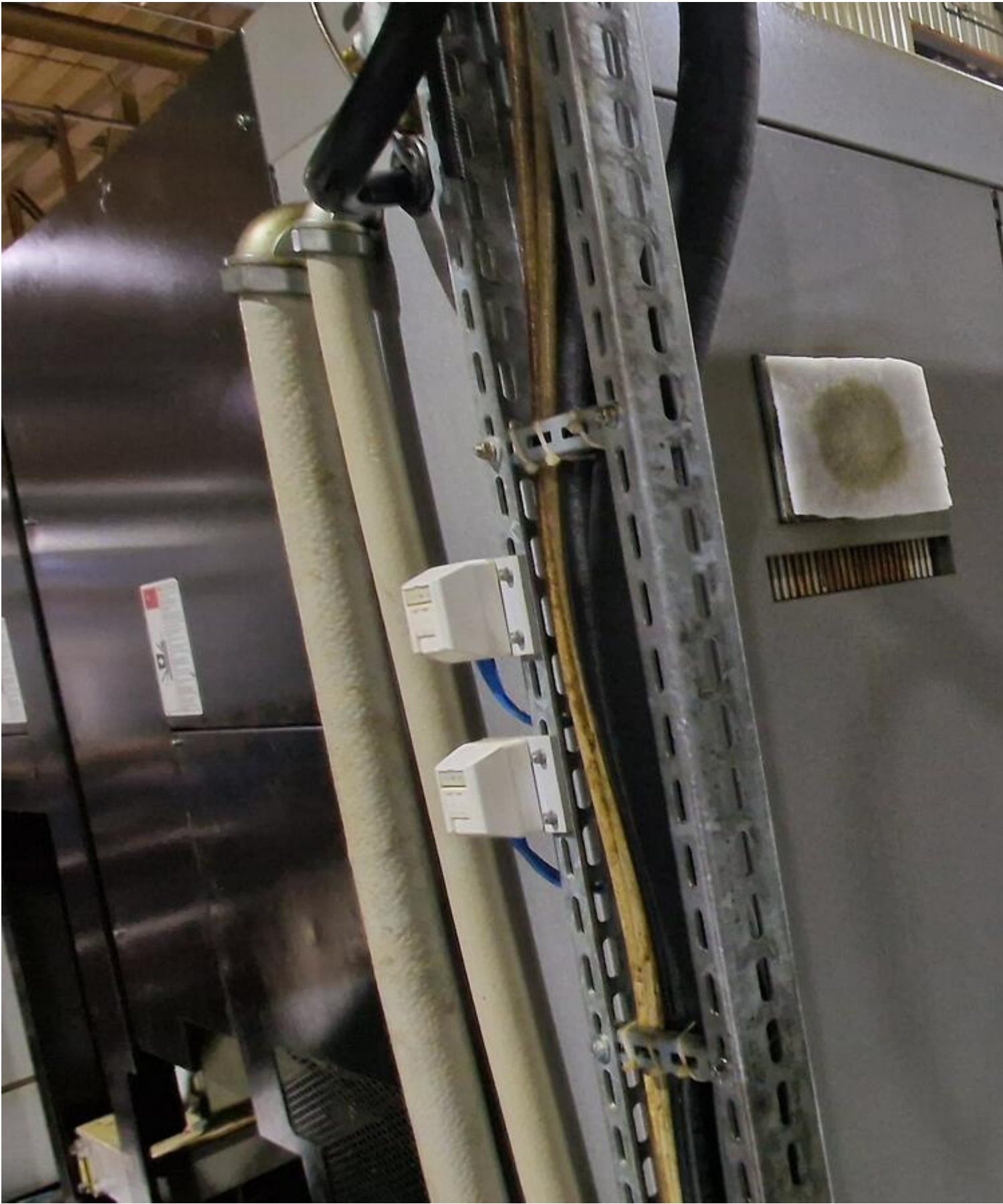
























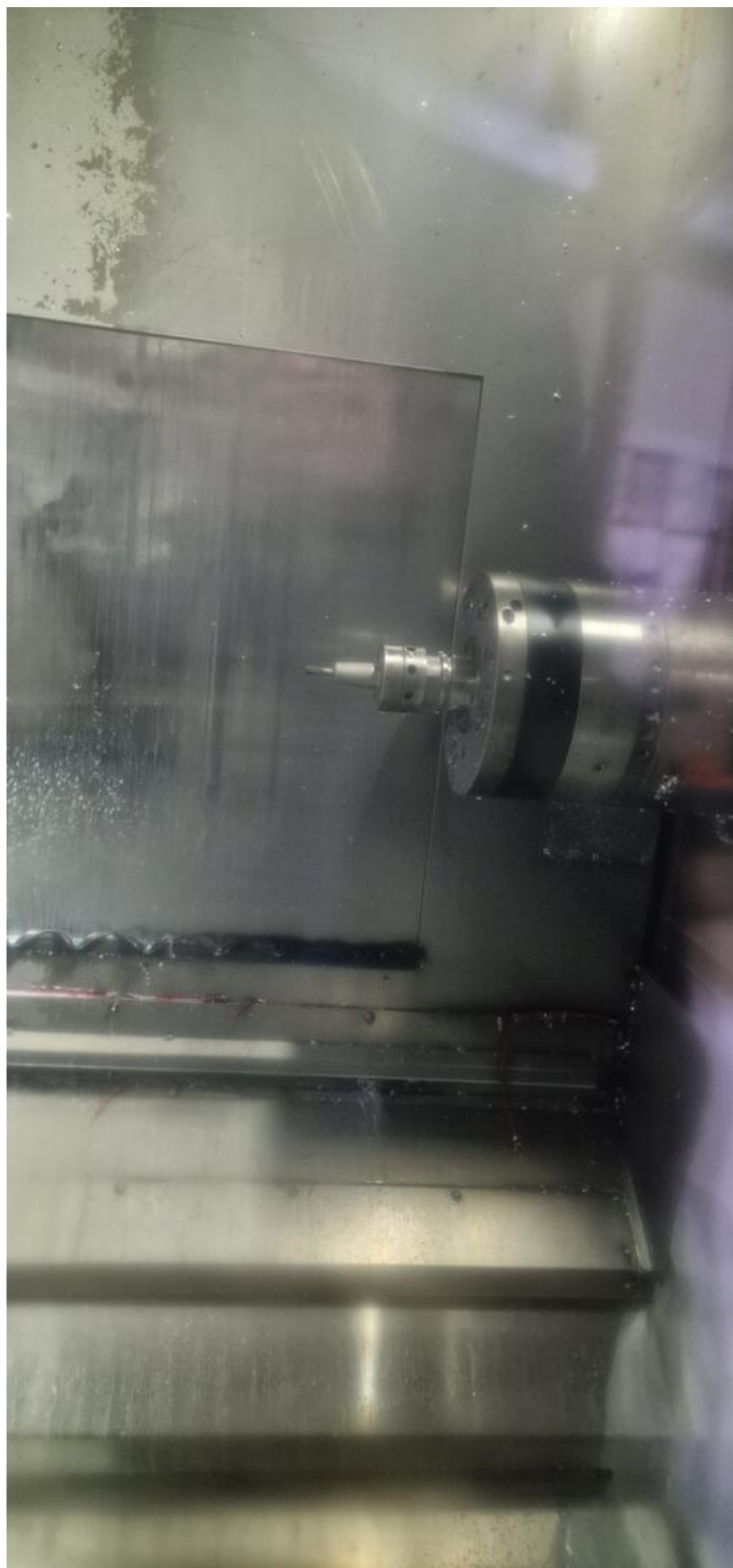




























Asset-Trade

Assessment and Sale of Used Assets world wide

Am Sonnenhof 16

47800 Krefeld

Germany

Tel.: +49 2151 32500 33

Fax.: +49 2151 65 29 22

Email: info@asset-trade.de

Web.: <https://www.asset-trade.de/en>

Generated on 12.02.2026

© Copyright 2026 - [Asset-Trade](#)

Page