

Image not found or type unknown



Ref. No.:  
1525-06240830

## Overview and Technical Data:

# Selection of Used Hydraulic Drawing and Stamping Presses – 500 to 630 Tons

## SCHULER



Year of Build:  
Jan 2013

### Description:

For sale is a selection of four powerful hydraulic frame presses, ideal for demanding drawing, stamping, and forming operations. The collection includes robust and proven models from traditional German manufacturers **Umformtechnik Erfurt** and **Lauffer**, as well as a press from **ZDAZ**. With pressing forces ranging from 5,000 kN (500 t) to 6,300 kN (630 t), these machines cover a wide spectrum of heavy-duty metal forming.

Buy used hydraulic presses. Drawing & stamping presses from Erfurt, Lauffer & ZDAZ with 500t - 630t. Ideal for metal forming. Enquire now!

### Zusammenfassung der Pressendaten / Summary of Press Data

Hersteller / Manufacturer	Typ / Type	Baujahr / YOM	Presskraft / Pressing Force	Stößelhub / Ram Stroke	Tischabmessungen / Table Dimensions	S/N	Besonderheiten / Key Features
<b>Umformtechnik Erfurt</b>	BKZe500 (R62SP5)	1984	5.000 kN (ca. 500 t)	400 mm	1.000 x 1.600 mm	463017	Stößelverstellbarkeit: 220 mm
<b>Lauffer SOLD</b>	RA500	2013	5.000 kN (ca. 500 t)	max. 600 mm	Max. Werkzeugraum: 900x900x800 mm	19828	Modern, Eilgang 500 mm/s, Gewicht 35t
<b>Umformtechnik Erfurt</b>	PKZE500	1983	5.000 kN (ca. 500 t)	400 mm	1.600 x 1.000 mm	463016	Stößelverstellbarkeit: 220 mm
<b>ZDAZ</b>	YQM630	1987	6.300 kN (ca. 630 t)	-	900 x 1.000 mm	2448/87	Höchste Presskraft

Please contact us for further technical details, documents or to arrange a viewing appointment.

## **Technical Data:**

## **Technical Data:**

Control:

[CNC](#)

## **Buyer Information:**

Condition:

[Very good condition](#)

Available:

[Sold](#)

Sold as:

[EXW \(Ex Works - Incoterm\)](#)

VAT:

[19 %](#)

Buyers Premium:

[18 %](#)

Location:

Germany

## **Images:**





























VEB Kombinat Umformtechnik  
"Herbert Warne" Erfurt

45525	kN	mm
	5000	27

Fabrikations-Nr. / Baujahr  
Max. Kraft des Stößels  
bei Abstand vor u. T.



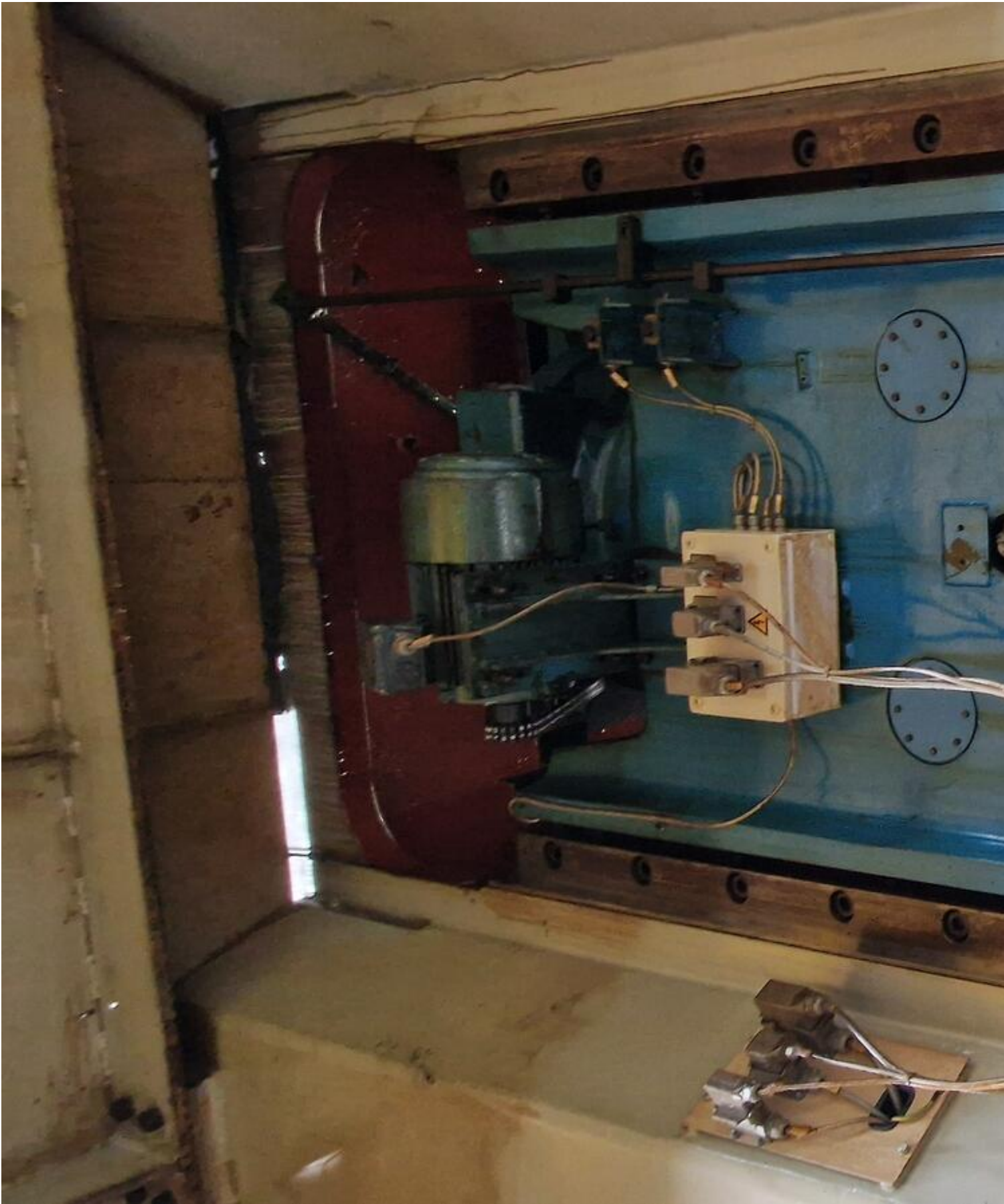


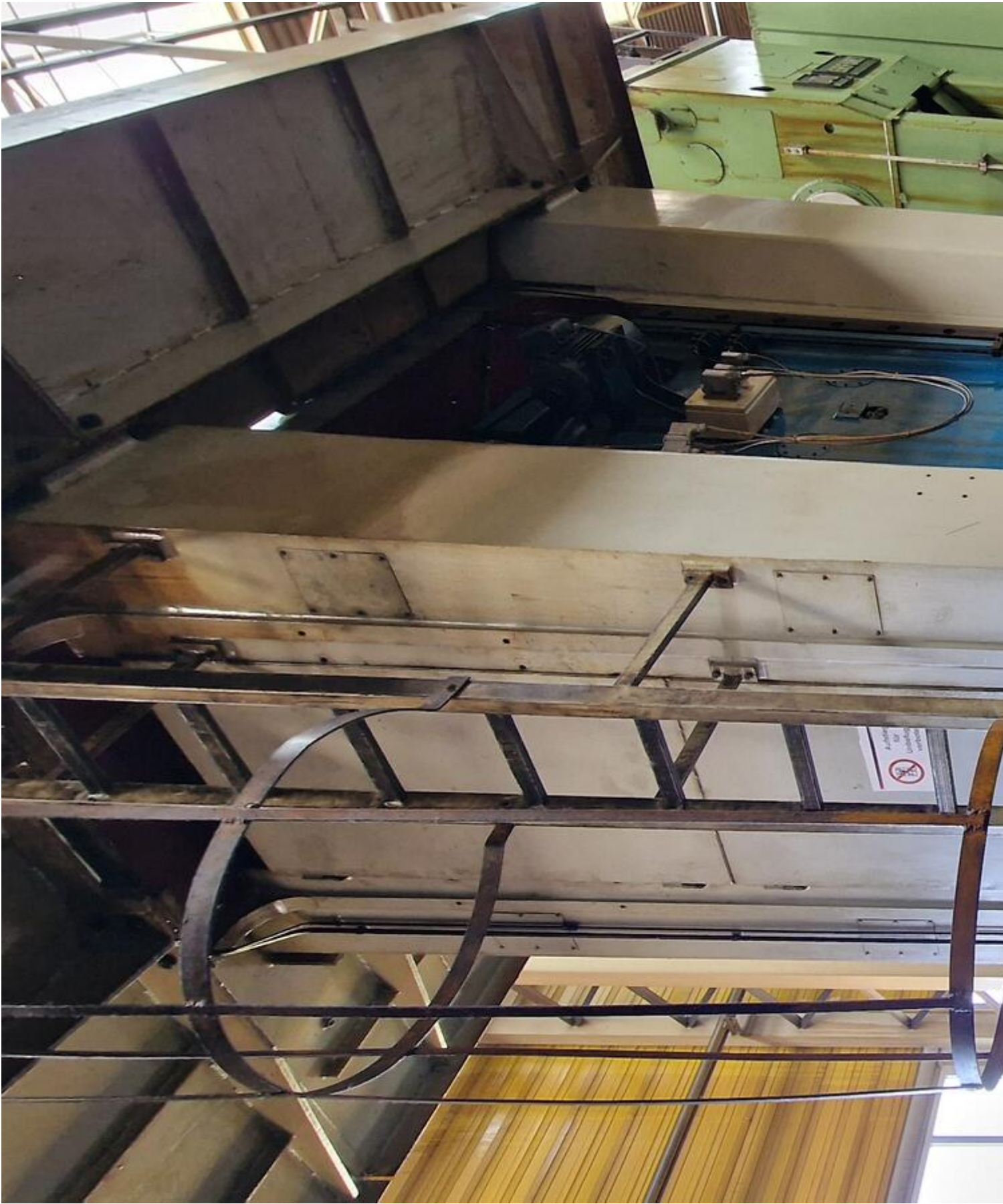




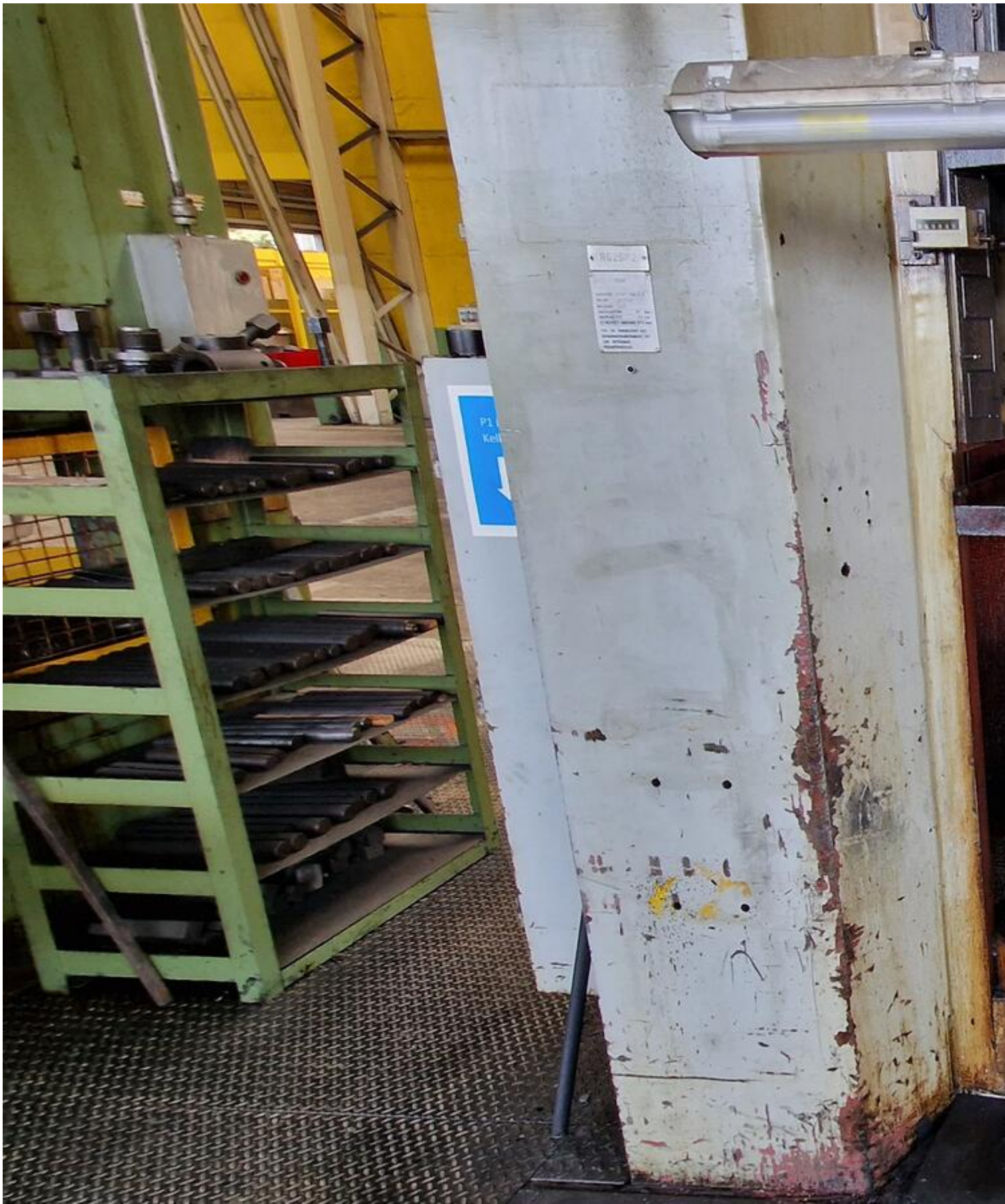


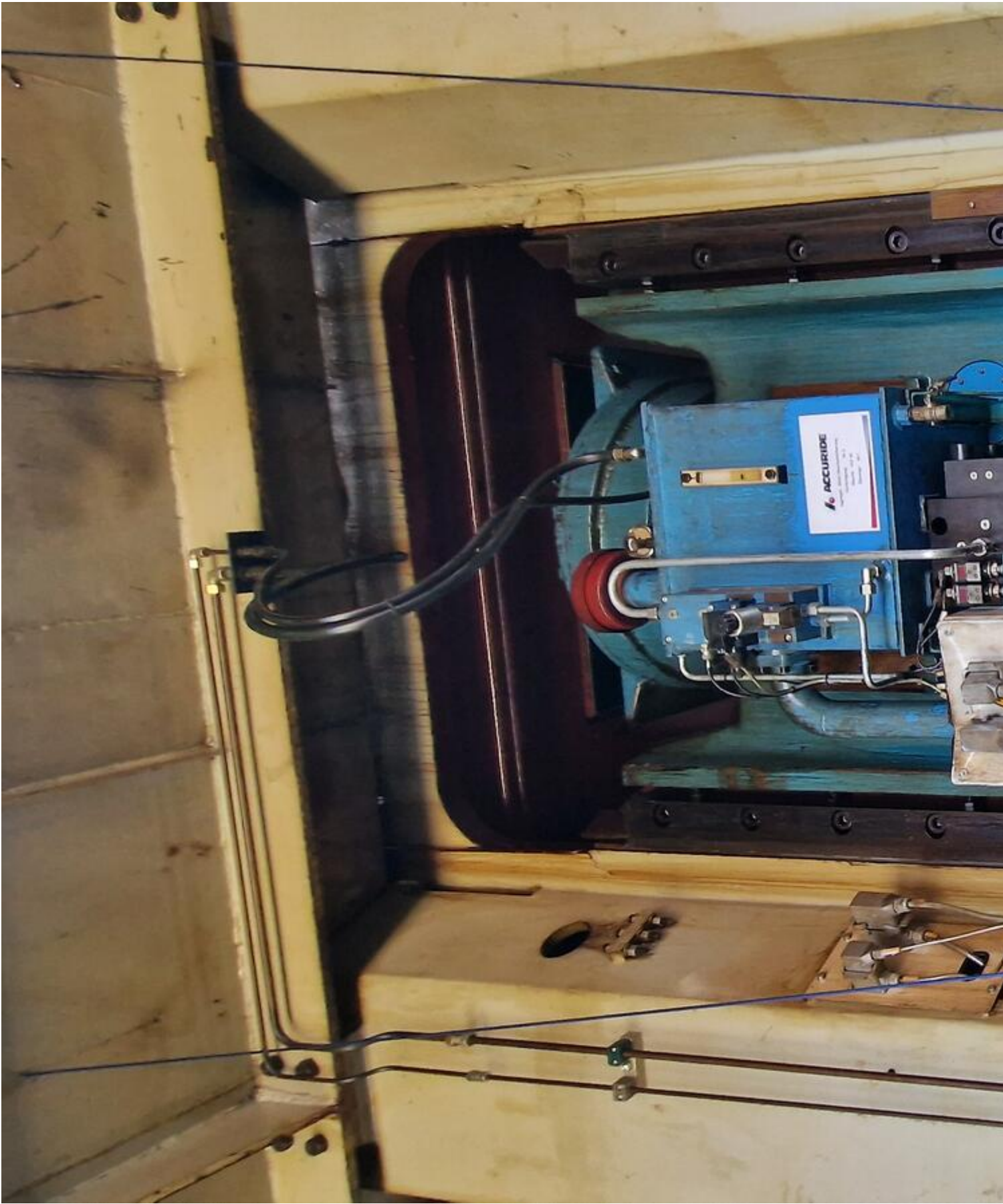






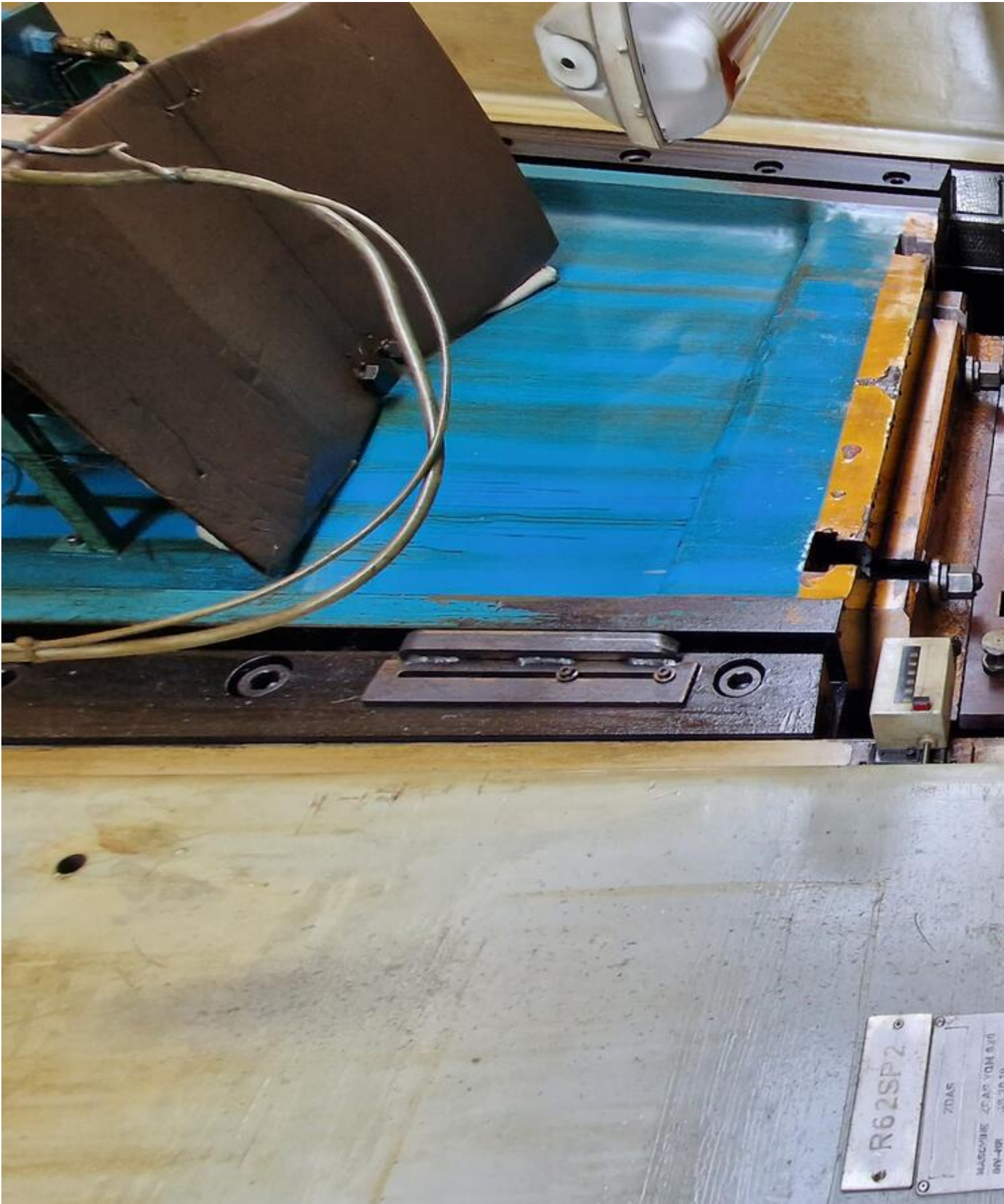












28

**Video:**



Asset-Trade

Assessment and Sale of Used Assets world wide

Am Sonnenhof 16

47800 Krefeld

Germany

Tel.: +49 2151 32500 33

Fax.: +49 2151 65 29 22

Email: [info@asset-trade.de](mailto:info@asset-trade.de)

Web.: <https://www.asset-trade.de/en>

Ref. No.:  
1525-06240830

### **Overview and Technical Data:**

## **Selection of Used Hydraulic Drawing and Stamping Presses – 500 to 630 Tons**

**SCHULER**

**SCHULER** 

Year of Build:  
Jan 2013

### **Description:**

For sale is a selection of four powerful hydraulic frame presses, ideal for demanding drawing, stamping, and forming operations. The collection includes robust and proven models from traditional German manufacturers **Umformtechnik Erfurt** and **Lauffer**, as well as a press from **ZDAZ**. With pressing forces ranging from 5,000 kN (500 t) to 6,300 kN (630 t), these machines cover a wide spectrum of heavy-duty metal forming.

Buy used hydraulic presses. Drawing & stamping presses from Erfurt, Lauffer & ZDAZ with 500t - 630t. Ideal for metal forming. Enquire now!

## Zusammenfassung der Pressendaten / Summary of Press Data

Hersteller / Manufacturer	Typ / Type	Baujahr / YOM	Presskraft / Pressing Force	Stößelhub / Ram Stroke	Tischabmessungen / Table Dimensions	S/N	Besonderheiten / Key Features
<b>Umformtechnik Erfurt</b>	BKZe500 (R62SP5)	1984	5.000 kN (ca. 500 t)	400 mm	1.000 x 1.600 mm	463017	Stößelverstellbarkeit: 220 mm
<b>Lauffer SOLD</b>	RA500	2013	5.000 kN (ca. 500 t)	max. 600 mm	Max. Werkzeugraum: 900x900x800 mm	19828	Modern, Eilgang 500 mm/s, Gewicht 35t
<b>Umformtechnik Erfurt</b>	PKZE500	1983	5.000 kN (ca. 500 t)	400 mm	1.600 x 1.000 mm	463016	Stößelverstellbarkeit: 220 mm
<b>ZDAZ</b>	YQM630	1987	6.300 kN (ca. 630 t)	-	900 x 1.000 mm	2448/87	Höchste Presskraft

Please contact us for further technical details, documents or to arrange a viewing appointment.

### Technical Data:

### Technical Data:

Control:

[CNC](#)

### Buyer Information:

Condition:

[Very good condition](#)

Available:

[Sold](#)

Sold as:

[EXW \(Ex Works - Incoterm\)](#)

VAT:

[19 %](#)

Buyers Premium:

[18 %](#)

Location:

Germany

### Images:































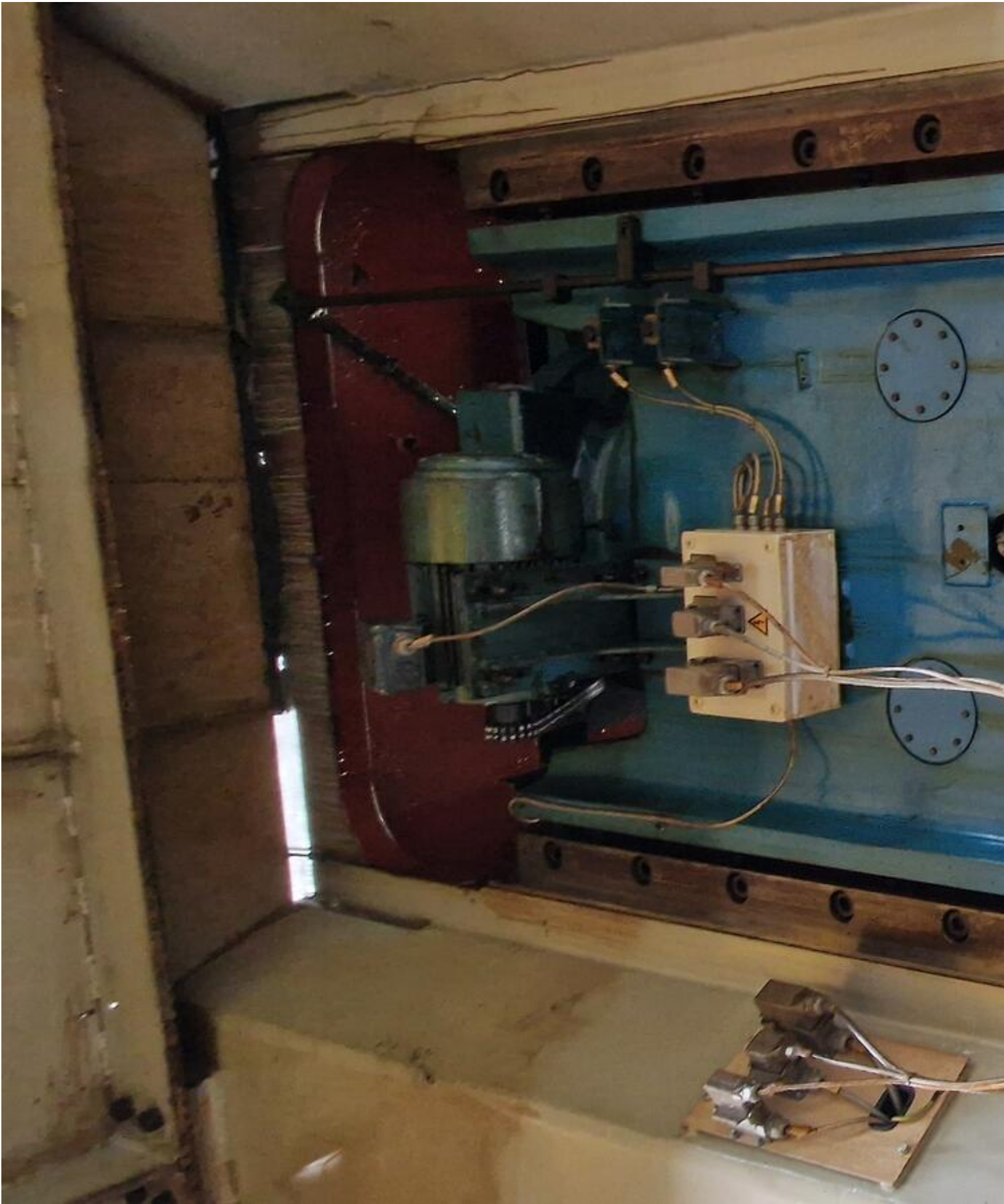


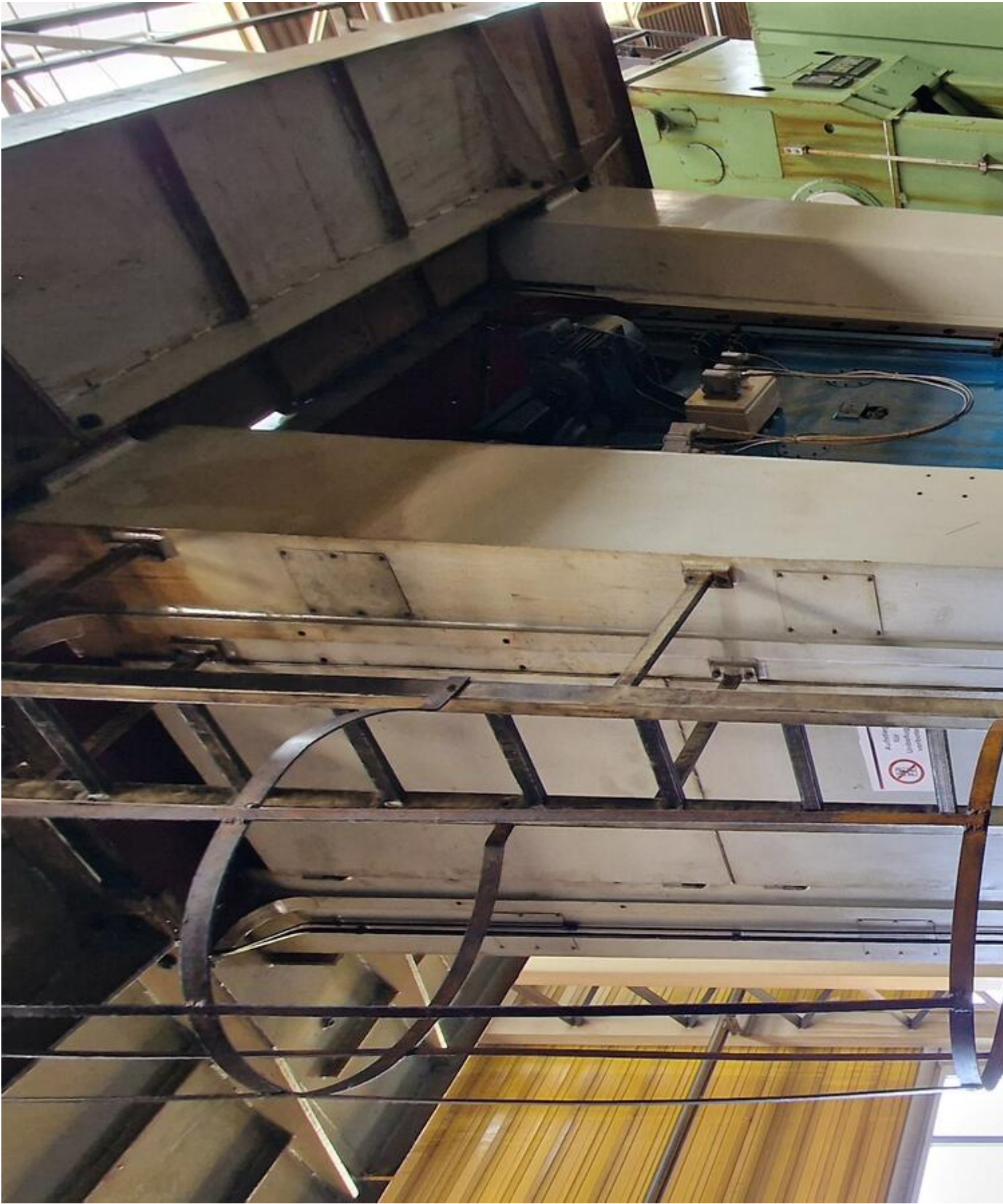




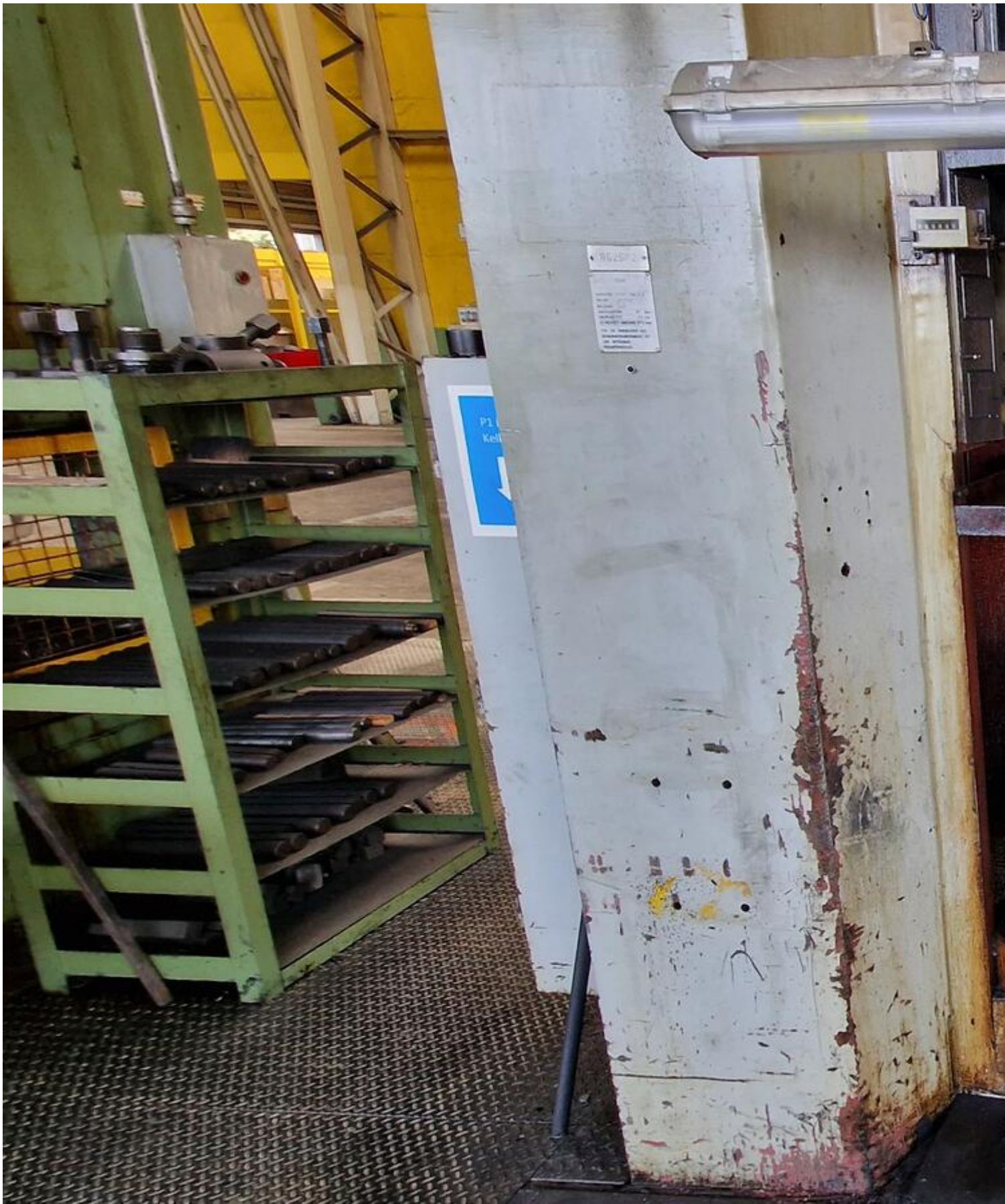


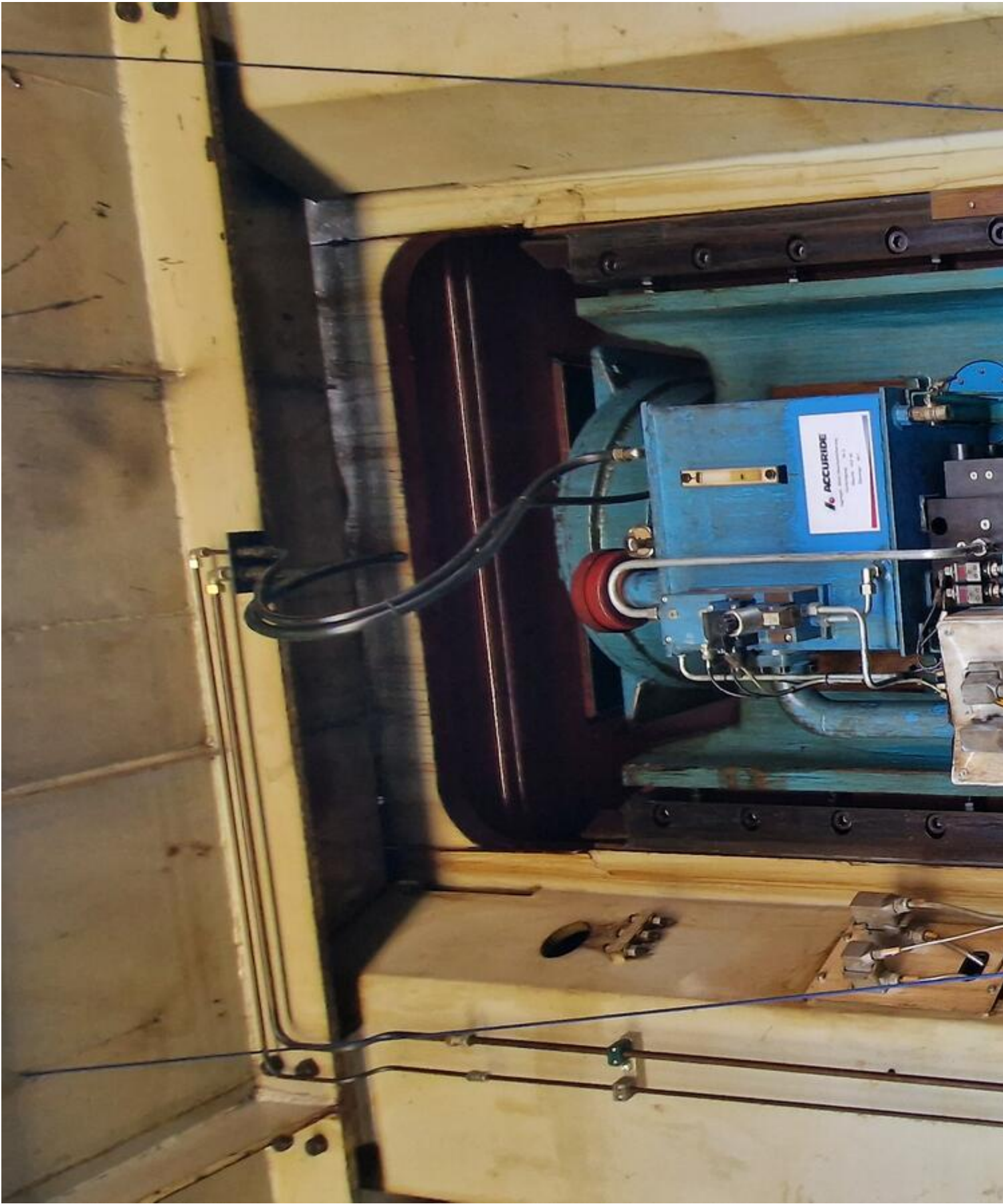






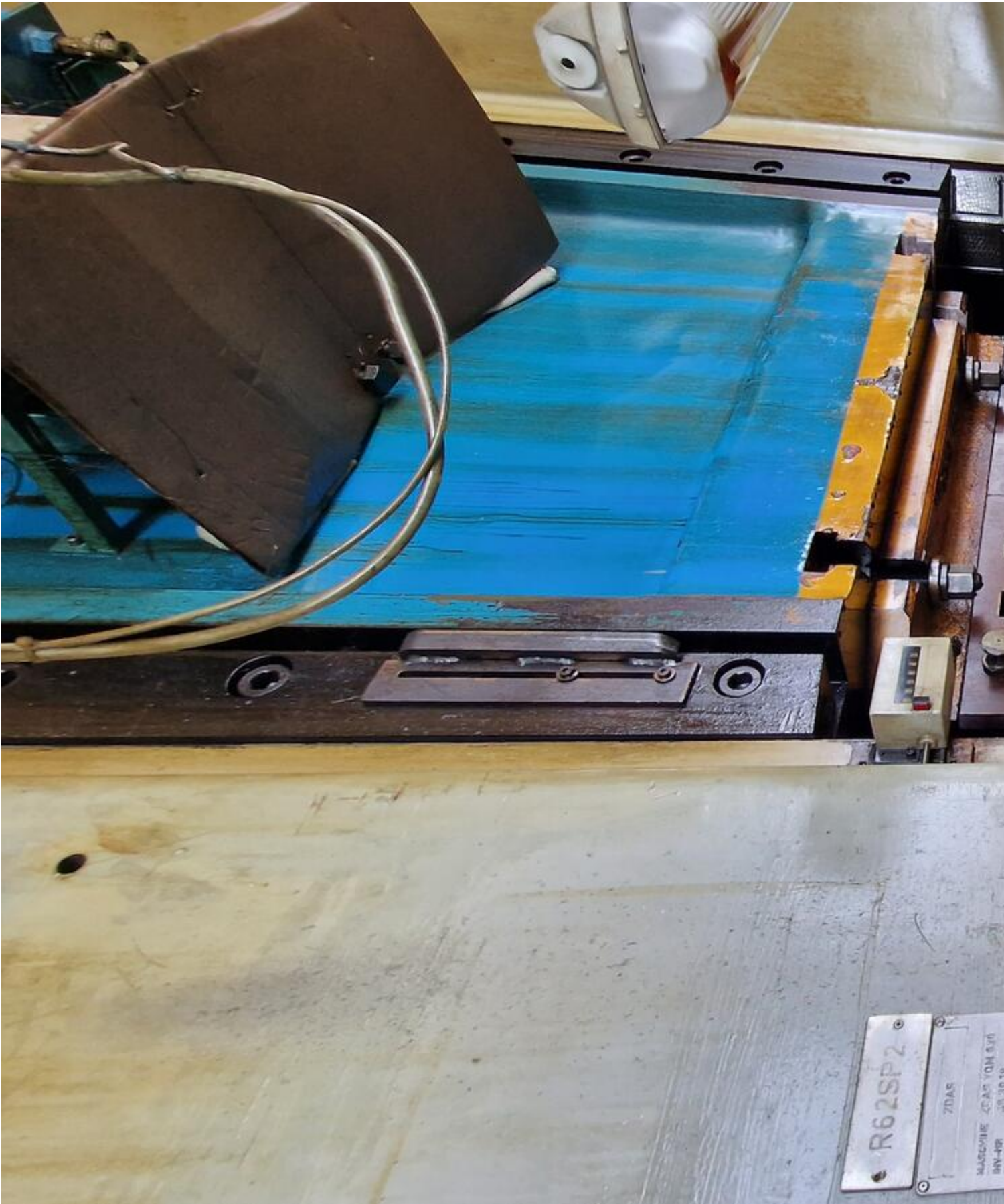












28

**Video:**



Asset-Trade

Assessment and Sale of Used Assets world wide

Am Sonnenhof 16

47800 Krefeld

Germany

Tel.: +49 2151 32500 33

Fax.: +49 2151 65 29 22

Email: [info@asset-trade.de](mailto:info@asset-trade.de)

Web.: <https://www.asset-trade.de/en>

Generated on 03.04.2026

© Copyright 2026 - [Asset-Trade](#)

Page