

Image not found or type unknown



Ref. No.:

1525-062402300

Overview and Technical Data:

Complete Kaeser Compressor Station (YOM 2019) with DSD240/205 & Sigma Air Manager 2

[KAESER](#)

**KA
KOMP**

Year of Build:

Jan 2019

Description:

For sale is a like-new, highly efficient, and fully integrated compressed air station from the premium manufacturer Kaeser. All core components, from the three screw compressors and the air treatment system to the intelligent controller, are from the year 2019 and are perfectly matched. The heart of the system is the high-end "Sigma Air Manager 2" master controller, which optimizes compressor operation and ensures maximum energy efficiency.

This facility is a ready-to-use "plug-and-play" solution for industrial companies with high demand for compressed air who value reliability, energy efficiency, and state-of-the-art technology.

Used Kaeser compressor system (2019) for sale. Complete air station with 2x DSD240, 1x DSD205 screw compressors, dryers, and Sigma Air Manager 2.

Highlights of the System

- **Complete Single-Source System:** All components by Kaeser, year of manufacture 2019.
- **Intelligent System Control:** Includes the high-end **Sigma Air Manager 2** master controller for peak efficiency.
- **Powerful Screw Compressors:** 2 x DSD240 (132 kW) and 1 x DSD205 (110 kW) with energy-efficient Sigma Profile rotors.
- **Full Air Treatment Package:** With modern Secotec refrigerant dryers, filters, and Aquamat oil-water separators.
- **Like-New Condition:** The DSD205 compressor, in particular, has very low operating hours.

Components in Detail

Screw Compressors (3 units)

1. **Kaeser DSD240 Sigma**
 - S/N: 10969205/10
 - YOM: 2019
 - **Rated Power:** 132 kW
 - **Max. Operating Pressure:** 8.5 bar
 - **Operating Hours (Run/Load):** 38,982 / 36,329 h (as read)
2. **Kaeser DSD240 Sigma**
 - S/N: 10969205/30
 - YOM: 2019
 - **Rated Power:** 132 kW
 - **Max. Operating Pressure:** 8.5 bar
 - **Operating Hours:** not listed separately
3. **Kaeser DSD205 Sigma**
 - S/N: 10969205/20
 - YOM: 2019
 - **Rated Power:** 110 kW
 - **Max. Operating Pressure:** 8.5 bar
 - **Operating Hours (Run/Load):** 3,349 / 2,199 h (as read)

Compressed Air Treatment

- > **Refrigerant Dryers (3 units):**
 - 1 x **Kaeser Secotec TF230** (YOM 2019)
 - 2 x **Kaeser Secotec TF280** (YOM 2019)
- **Compressed Air Filters (3 units):**
 - 3 x **Kaeser F250KE** (YOM 2019)
- **Oil-Water Separators (2 units):**
 - 2 x **Kaeser Aquamat CF75** (YOM 2019)

Control System

- **Master Controller:**
 - 1 x **Kaeser Sigma Air Manager 2 (SAM 2)**

Technical Data:

Technical Data:

Control:

[CNC](#)

Buyer Information:

Condition:

[Very good condition](#)

Available:

[Sold](#)

Sold as:

[EXW \(Ex Works - Incoterm\)](#)

VAT:

[19 %](#)

Buyers Premium:

[18 %](#)

Location:

Germany

Images:











KAESER KOMPRESSOREN SE
Carl-Kaaser-Str. 26
GERMANY 96450 Coburg
www.kaeser.com

Serial-Nr.: 2922 - 7147870

DSD 205

3 - 45 °C
110,0 kW
8,50 bar

**KAESER
KOMPRESSOREN**

Schraubenkompressor
Material-Nr.: DSD 3

Umgebungstemperatur
Beimessungsleistung
Max. Betriebsüberdruck PS
Motornenn Drehzahl
Phasen: 3







KAESER KOMPRESSOREN SE
Carl-Kaiser-Str. 26
GERMANY - 96450 Coburg
www.kaeiser.com

KAESER
KOMPRESSOREN

Schraubbolzenpresser

Material-Nr.: DSD 3

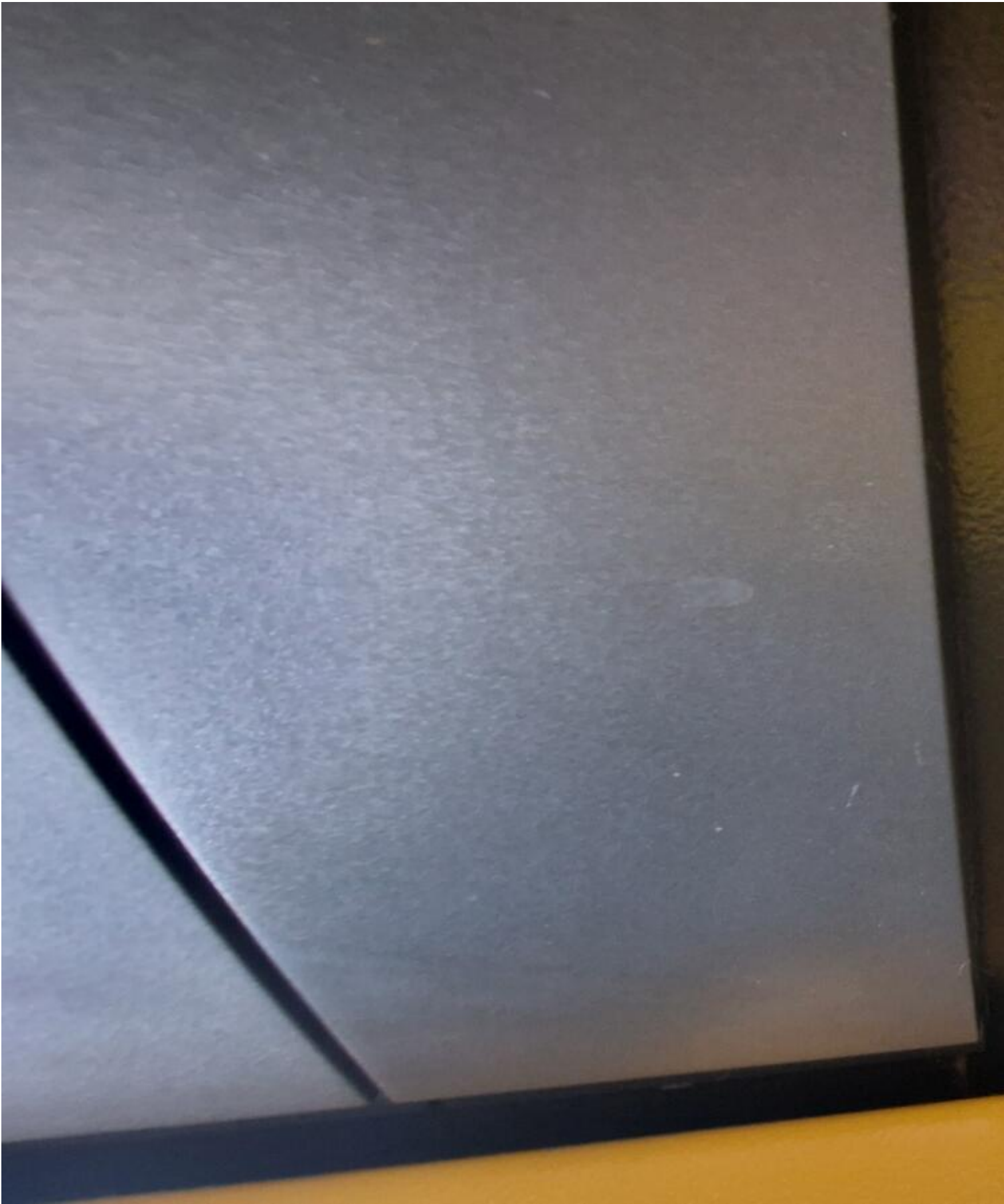
DSD 240

Serial-Nr. 2896 - 7130311

















**KAESER
KOMPRESSOREN**

Refrigeration dryer

Material No.: 1.2481.0

Max. working pressure PS

Compressed air inlet temp. TS

Ambient temperature

Phases: 3

Voltage

Full load current

Full load current drive motor

Electrical diagram

KAESER KOMPRESSOREN SE
Carl-Kaeser-Str. 26
GERMANY

96450 Coburg
www.kaeser.com

TF 230

Serial No.: 2481 - 7142037

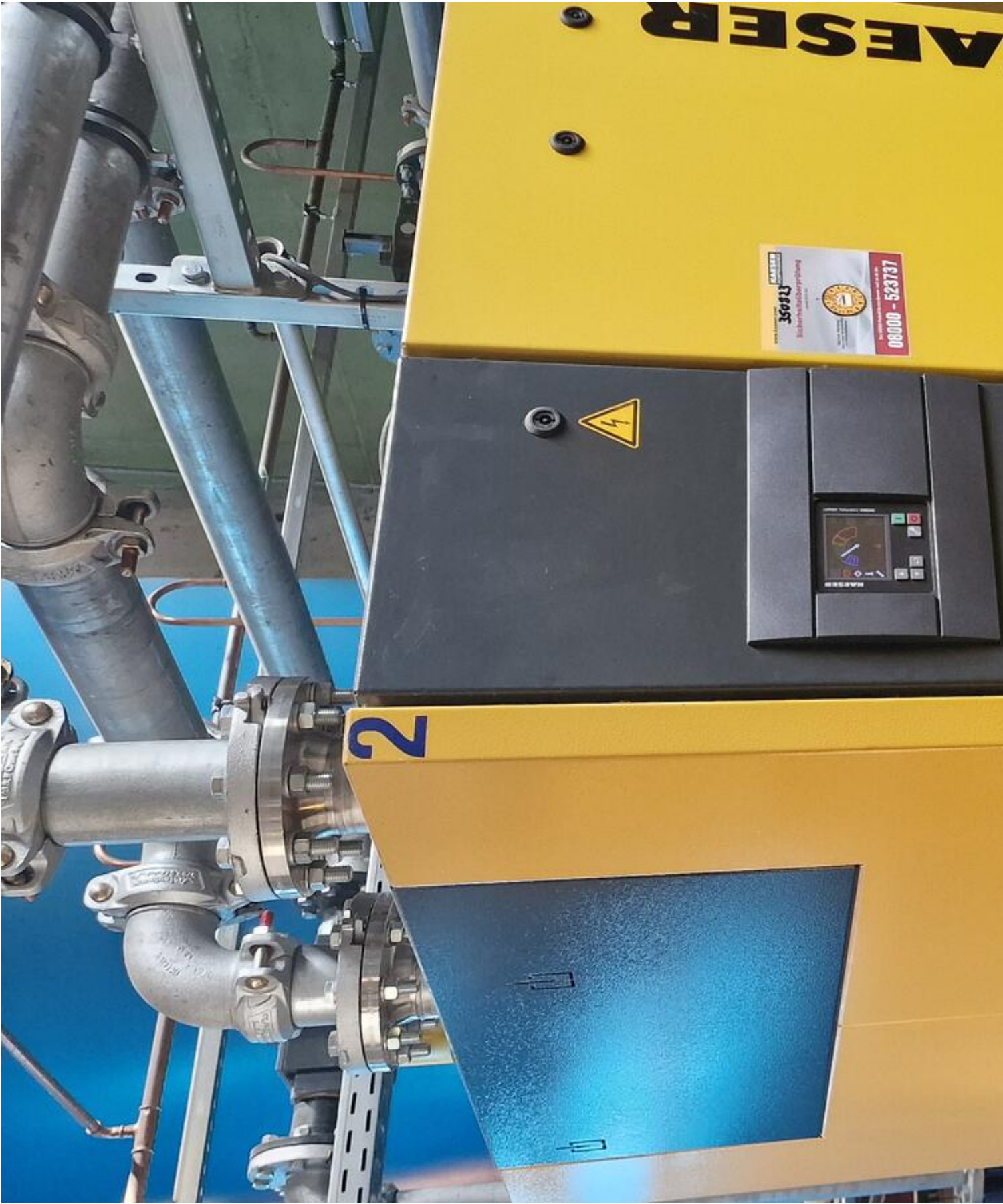
16,00 bar

3 - 60 °C

3 - 45 °C

Frequency: 50 Hz

400 V







KAESER KOMPRESSOREN

KAESER KOMPRESSOREN SE
Carl-Kaaser-Str. 26
GERMANY 96450 Coburg
www.kaeser.com

TF 280

Serial No.: 2103 - 7138644

Refrigeration dryer

Material No.: 1.2482.0

Max. working pressure PS

Compressed air inlet temp. TS

Ambient temperature

Phases: 3

Voltage

Full load current

Full load current drive motor

Electrical diagram

Refrigerant system

16,00 bar

3 - 60 °C

3 - 45 °C

Frequency: 50 Hz

400 V

9,6 A

8,6 A

STF-03012.00

R-134a: 2,60 kg





KAESER KOMPRESSOREN

KAESER KOMPRESSOREN SE
Carl-Kaaser-Str. 26
GERMANY · 96450 Coburg
w w w . k a e s e r . c o m

TF 280

Serial No.: 2102 - 7138636

Refrigeration dryer

Material No.: 1.2482.0

Max. working pressure PS

16,00 bar

Compressed air inlet temp. TS

3 - 60 °C

Ambient temperature

3 - 45 °C

Phases: 3

Frequency: 50 Hz

Voltage

400 V

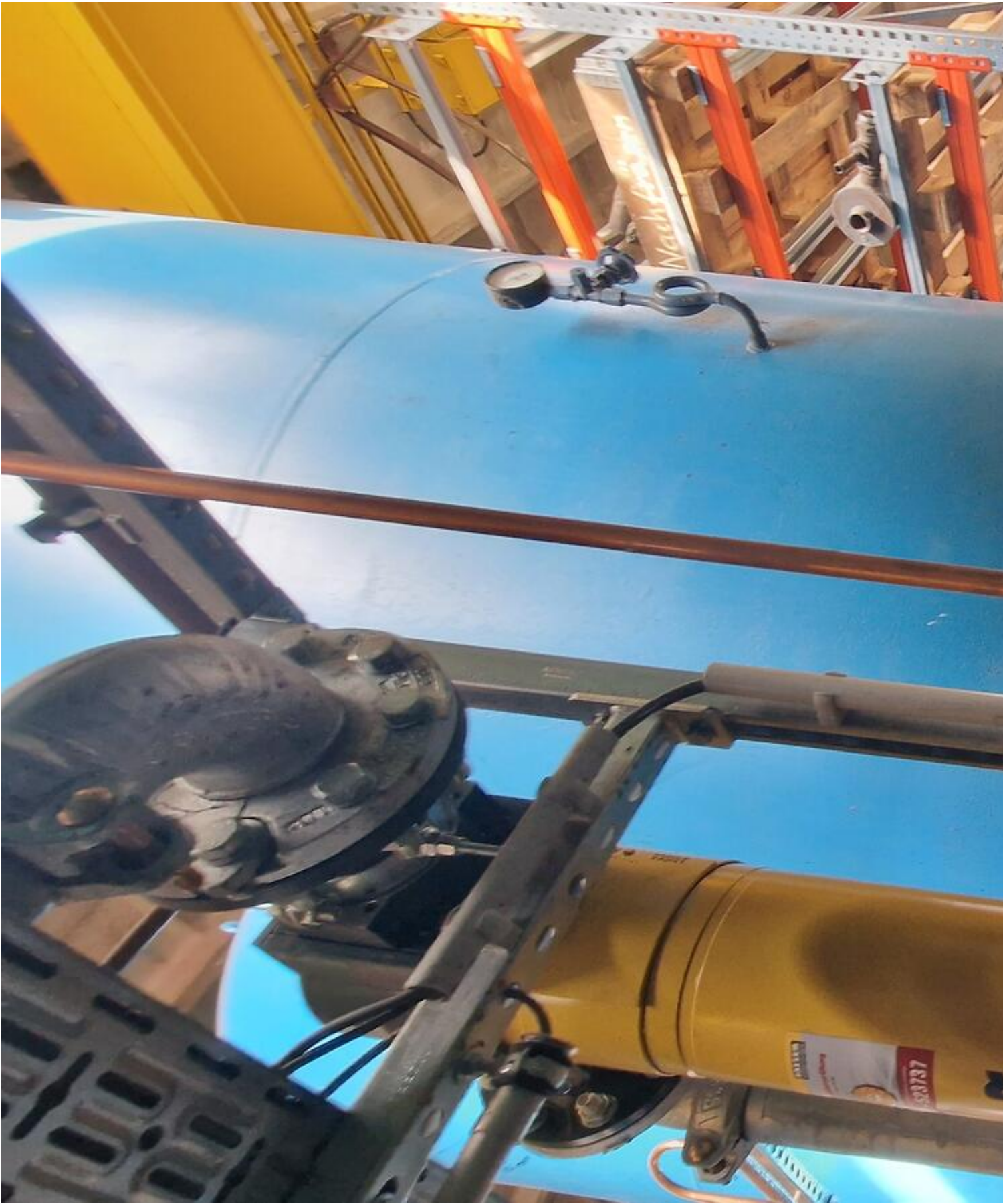
Full load current

9,6 A

8,6 A

STF 03012.00











28

Video:



Asset-Trade

Assessment and Sale of Used Assets world wide

Am Sonnenhof 16

47800 Krefeld

Germany

Tel.: +49 2151 32500 33

Fax.: +49 2151 65 29 22

Email: info@asset-trade.de

Web.: <https://www.asset-trade.de/en>

Ref. No.:

1525-062402300

Overview and Technical Data:

Complete Kaeser Compressor Station (YOM 2019) with DSD240/205 & Sigma Air Manager 2

[KAESER](#)

KA KOMP

Year of Build:
Jan 2019

Description:

For sale is a like-new, highly efficient, and fully integrated compressed air station from the premium manufacturer Kaeser. All core components, from the three screw compressors and the air treatment system to the intelligent controller, are from the year 2019 and are perfectly matched. The heart of the system is the high-end "Sigma Air Manager 2" master controller, which optimizes compressor operation and ensures maximum energy efficiency.

This facility is a ready-to-use "plug-and-play" solution for industrial companies with high demand for compressed air who value reliability, energy efficiency, and state-of-the-art technology.

Used Kaeser compressor system (2019) for sale. Complete air station with 2x DSD240, 1x DSD205 screw compressors, dryers, and Sigma Air Manager 2.

Highlights of the System

- **Complete Single-Source System:** All components by Kaeser, year of manufacture 2019.
- **Intelligent System Control:** Includes the high-end **Sigma Air Manager 2** master controller for peak efficiency.
- **Powerful Screw Compressors:** 2 x DSD240 (132 kW) and 1 x DSD205 (110 kW) with energy-efficient Sigma Profile rotors.
- **Full Air Treatment Package:** With modern Secotec refrigerant dryers, filters, and Aquamat oil-water separators.
- **Like-New Condition:** The DSD205 compressor, in particular, has very low operating hours.

Components in Detail

Screw Compressors (3 units)

1. **Kaeser DSD240 Sigma**
 - S/N: 10969205/10
 - YOM: 2019
 - **Rated Power:** 132 kW
 - **Max. Operating Pressure:** 8.5 bar
 - **Operating Hours (Run/Load):** 38,982 / 36,329 h (as read)
2. **Kaeser DSD240 Sigma**
 - S/N: 10969205/30
 - YOM: 2019
 - **Rated Power:** 132 kW
 - **Max. Operating Pressure:** 8.5 bar
 - **Operating Hours:** not listed separately
3. **Kaeser DSD205 Sigma**
 - S/N: 10969205/20
 - YOM: 2019
 - **Rated Power:** 110 kW
 - **Max. Operating Pressure:** 8.5 bar
 - **Operating Hours (Run/Load):** 3,349 / 2,199 h (as read)

Compressed Air Treatment

- > **Refrigerant Dryers (3 units):**
 - 1 x **Kaeser Secotec TF230** (YOM 2019)
 - 2 x **Kaeser Secotec TF280** (YOM 2019)
- **Compressed Air Filters (3 units):**
 - 3 x **Kaeser F250KE** (YOM 2019)
- **Oil-Water Separators (2 units):**
 - 2 x **Kaeser Aquamat CF75** (YOM 2019)

Control System

- **Master Controller:**
 - 1 x **Kaeser Sigma Air Manager 2 (SAM 2)**

Technical Data:

Technical Data:

Control:

[CNC](#)

Buyer Information:

Condition:

[Very good condition](#)

Available:

[Sold](#)

Sold as:

[EXW \(Ex Works - Incoterm\)](#)

VAT:

[19 %](#)

Buyers Premium:

[18 %](#)

Location:

Germany

Images:











KAESER KOMPRESSOREN SE
Carl-Kaeser-Str. 26
GERMANY 96450 Coburg
www.kaeser.com

Serial-Nr.: 2922 - 7147870
DSD 205

**KAESER
KOMPRESSOREN**

Schraubenkompressor
Material-Nr.: DSD 3

Umgebungstemperatur

Beimessungsleistung

Max. Betriebsüberdruck PS

Motornennzahl

3 - 45 °C

110,0 kW

8,50 bar







KAESER KOMPRESSOREN SE
Carl-Kaiser-Str. 26
GERMANY - 96450 Coburg
www.kaeiser.com

KAESER
KOMPRESSOREN

Schraubbolzkompresse

Material-Nr.: DSD 3

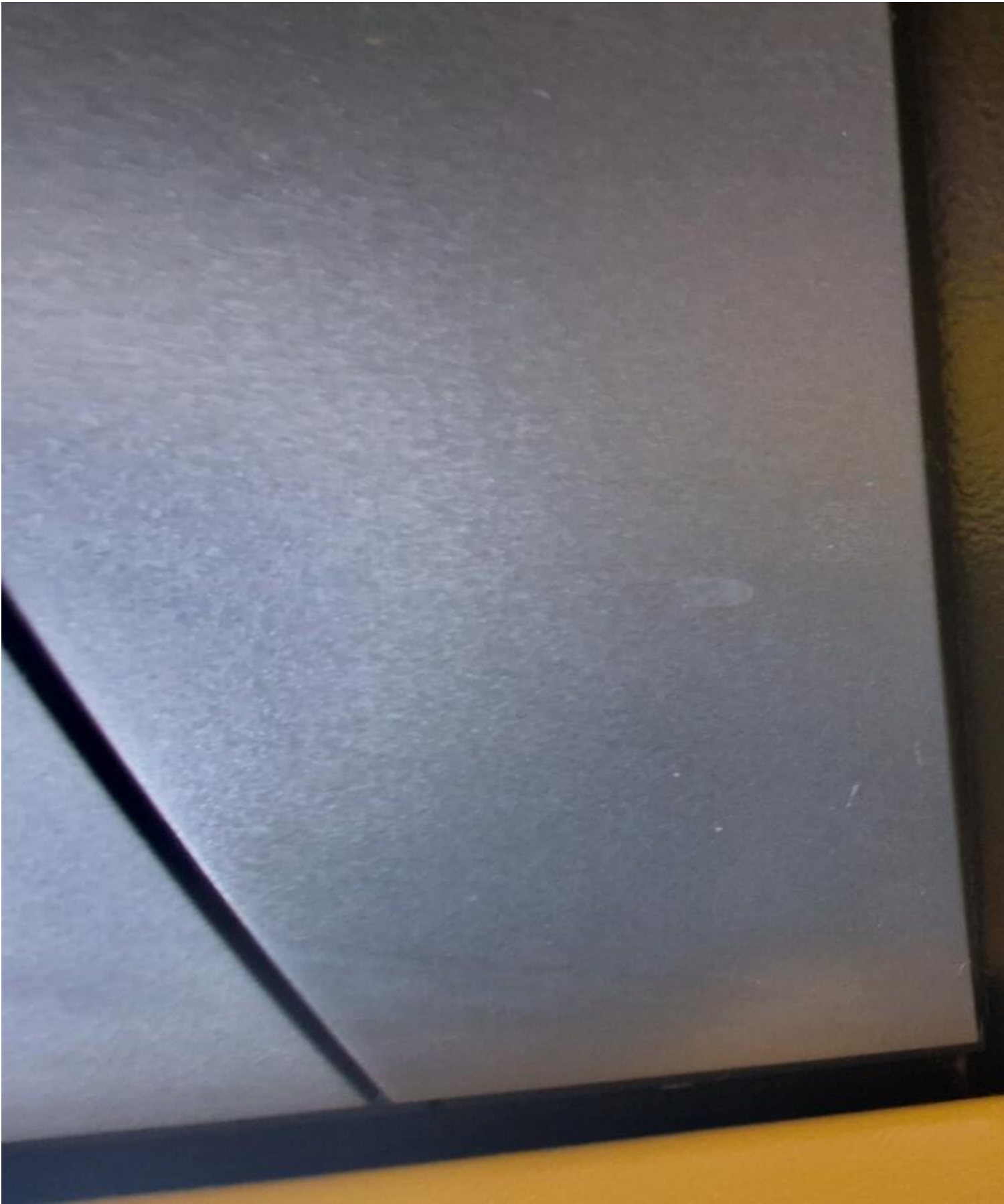
DSD 240

Serial-Nr. 2896 - 7130311

















KAESER KOMPRESSOREN

Refrigeration dryer

Material No.: 1.2481.0

Max. working pressure PS

Compressed air inlet temp. TS

Ambient temperature

Phases: 3

Voltage

Full load current

Full load current drive motor

Electrical diagram

KAESER KOMPRESSOREN SE
Carl-Kaeser-Str. 26
GERMANY

96450 Coburg
www.kaeser.com

TF 230

Serial No.: 2481 - 7142037

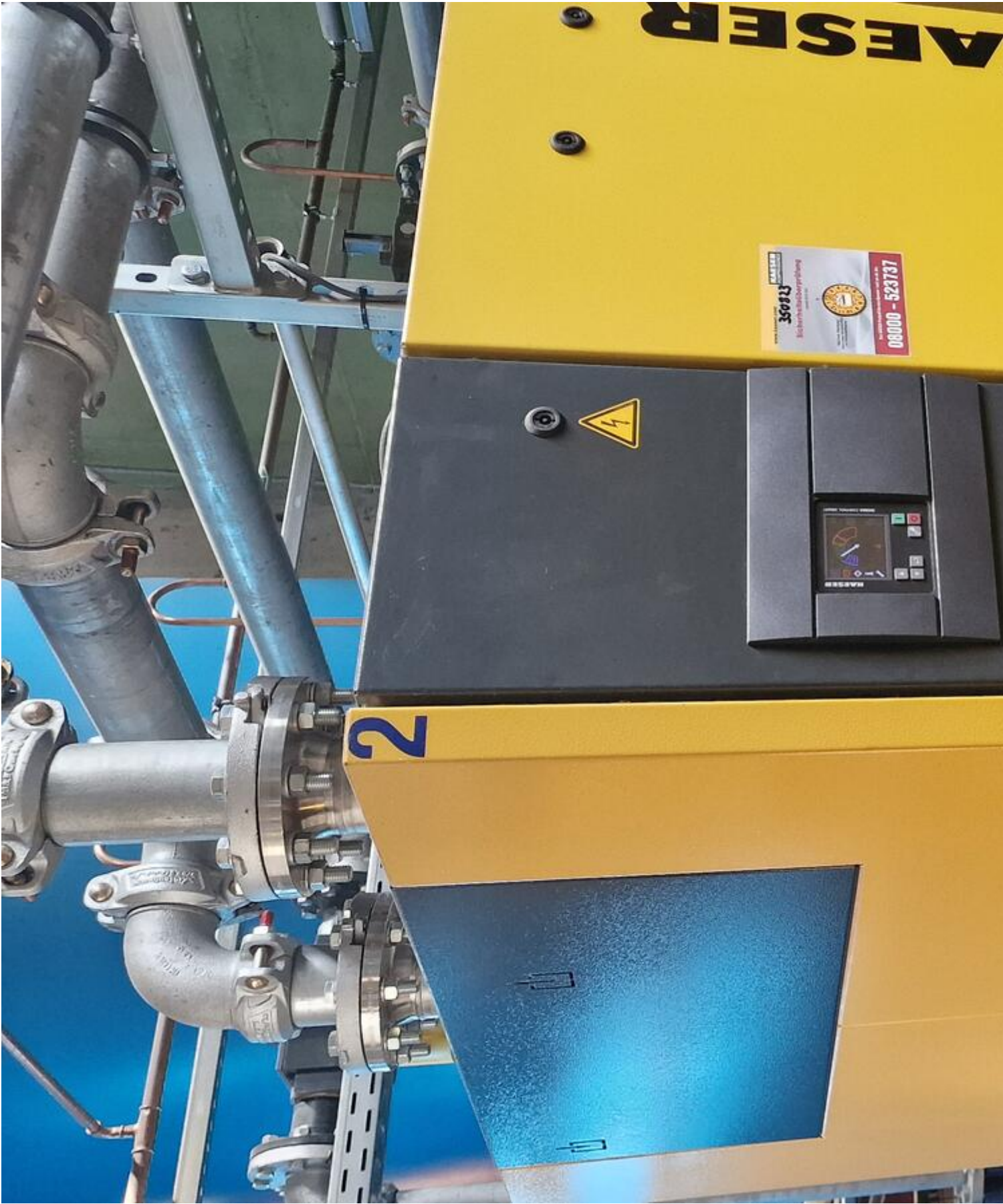
16,00 bar

3 - 60 °C

3 - 45 °C

Frequency: 50 Hz

400 V







KAESER KOMPRESSOREN

KAESER KOMPRESSOREN SE
Carl-Kaeser-Str. 26
GERMANY 96450 Coburg
www.kaeser.com

TF 280

Refrigeration dryer	Serial No.: 2103 - 7138644
Material No.: 1.2482.0	16,00 bar
Max. working pressure PS	3 - 60 °C
Compressed air inlet temp. TS	3 - 45 °C
Ambient temperature	Frequency: 50 Hz
Phases: 3	400 V
Voltage	9,6 A
Full load current	8,6 A
Full load current drive motor	STF-03012.00
Electrical diagram	
Refrigerant system	
Refrigerant used greenhouse gases	R-134a: 2,60 kg





KAESER KOMPRESSOREN

KAESER KOMPRESSOREN SE
Carl-Kaaser-Str. 26
GERMANY · 96450 Coburg
w w w . k a e s e r . c o m

TF 280

Serial No.: 2102 - 7138636

Refrigeration dryer

Material No.: 1.2482.0

Max. working pressure PS

16,00 bar

Compressed air inlet temp. TS

3 - 60 °C

Ambient temperature

3 - 45 °C

Phases: 3

Frequency: 50 Hz

Voltage

400 V

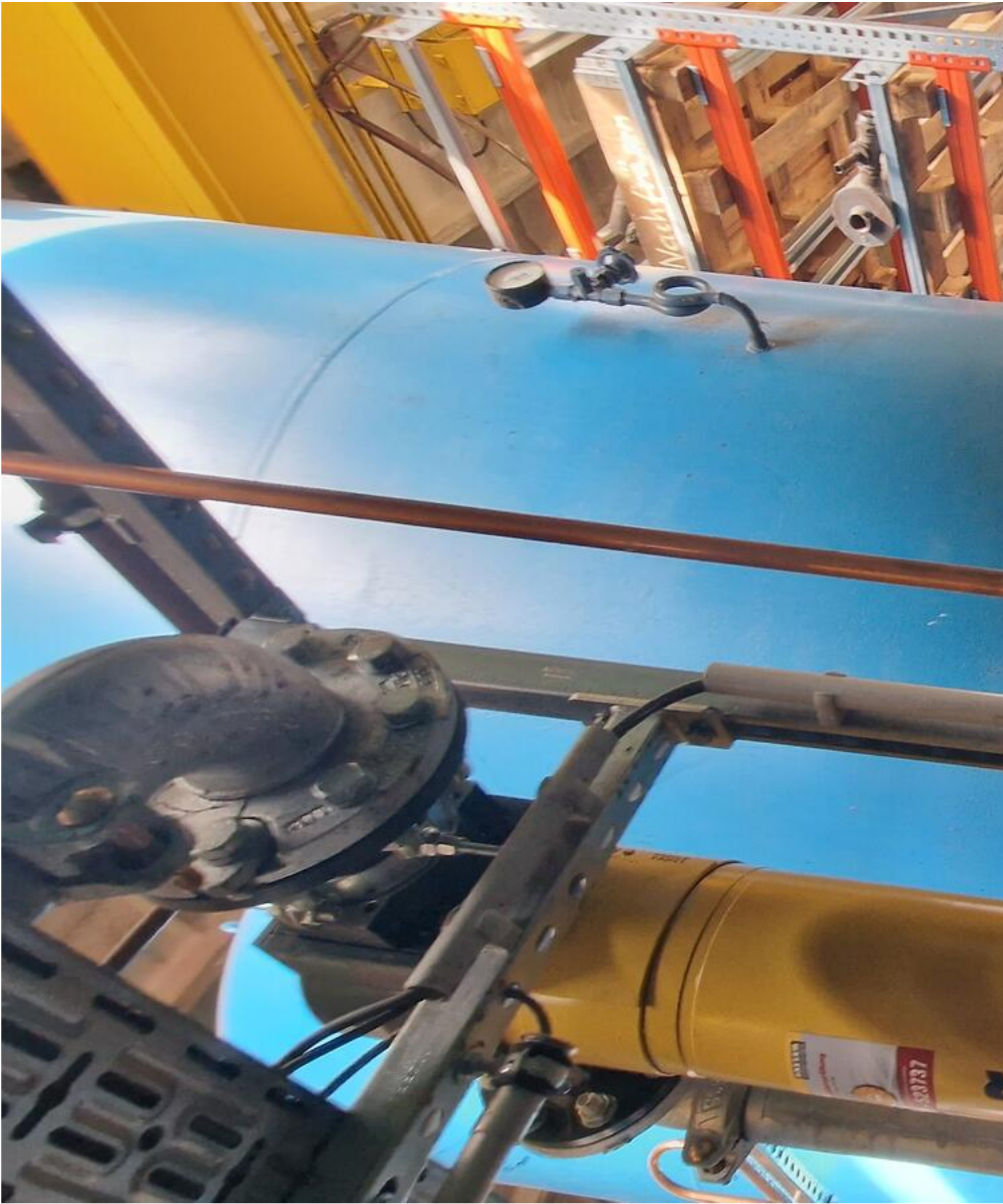
Full load current

9,6 A

8,6 A

STF 03012.00











28

Video:



Asset-Trade

Assessment and Sale of Used Assets world wide

Am Sonnenhof 16

47800 Krefeld

Germany

Tel.: +49 2151 32500 33

Fax.: +49 2151 65 29 22

Email: info@asset-trade.de

Web.: <https://www.asset-trade.de/en>

Generated on 17.04.2026

© Copyright 2026 - [Asset-Trade](#)

Page