



Asset-Trade

Assessment & Sale of Used Assets

Ref. No.: 1424-06122026

Overview and Technical Data:

**High-Quality Flat Glass Production &
Processing Machinery from Doering Radeburg
– Available for Global Sale**

NOT DEFINED



Multiple Makers Not Defined

Year of Build: Jan 2012



Asset-Trade

Assessment & Sale of Used Assets



Description:

We offer an exceptional opportunity to acquire premium European flat glass processing technology from the closed production facility of Doering Glass, Germany.

This inventory represents a comprehensive selection of industrial machinery ideal for architectural glass manufacturing, automotive glass applications, and high-capacity thermal tempering lines.

? Key Investment Highlights & Plant Capacities

The facility was engineered for high-volume, automated industrial glass processing with the following maximum daily benchmarks:

- **Insulated Glass (IGU) Production:** 2 complete ISO lines with a capacity of up to 500m² per shift per line.
- **Laminated Safety Glass (VSG):** 1 dedicated lamination line capable of up to 350m² per shift (600m² per day).
- **Glass Tempering (ESG):** High-capacity thermal toughening plant treating up to 53 tonnes of raw glass daily.
- **Pre-Processing (Cutting & Grinding):** 3 high-speed cutting lines (~1800m²/shift) and 2 industrial grinding lines.

?? Major Machinery Inventory & Technical Specifications

1. Glass Tempering & Thermal Toughening Lines (ESG)

- **TAMGLASS HTF ProE-2860-CTS-10-R Tempering Furnace (YOM 2012)**
 - Equipped with 1 hearth furnace and 1 convection cooling/quenching zone.
 - Integrated **Vitroperfon iLook Anisotropy Scanner** (YOM 2017, S/N: SN-SY-SG.001-002) for real-time optical quality inspection.
- **TAMGLASS HTF ProE TAM Plant (YOM ~2002)**
 - Complete tempering line including infeed conveyor, heating section, cooling cell, and outfeed tracking.
 - Heavy-duty KOJA ventilation units (S/N: 0150358-010-0010 / 0020).



2. High-End Insulated Glass Production Lines (IGU)

- **Bystronic Lenhardt Technology TB LK 2.70 2.50 VL 1AS (YOM 2005)**
 - Maximum frame dimensions: 2700 x 5000 mm. Max. assembly weight: 1500kg.
 - Max. processing thickness: 45mm. Total line length: approx. 60m.
 - Includes: Edge deletion unit, industrial washing machine, frame assembly press, and automated sealing robot. Total production count: 474,010 units.
- **Lenhardt TB BR 3.20 1.70 VL 1AS Insulating Glass Line (YOM 2000)**
 - Jumbo size processing: Max. frame size 3200 x 5000 mm. Max. weight: 1000kg.
 - Complete 4-part automated configuration (Washing, pressing, sealing) with a line length of approx. 55m.

3. Laminated Glass (VSG) & Autoclave Technology

- **Benteler Laminated Safety Glass (VSG) Combining Line**
 - Extensive production line featuring a 17m infeed system, Hegla V-H vacuum lifter 400kg capacity, and automated foil paternoster (W.Wolf).
 - Complete climate-controlled cleanroom assembly area 20 x 20 m with air filtration.
 - Downstream **Benteler Pre-Heat Convection Oven** (YOM 2017) and Armatec SR/V discharge lifter 1000 kg capacity.
- **SCHOLZ Industrial Glass Autoclave (YOM 1993)**
 - Massive 54,000 Liter capacity , designed for maximum operating temperatures up to 150°C
 - Highly durable unit with 43,942 recorded heating pump operating hours.

4. CNC Processing & Edge Grinding Centers

- **INTERMAC VERTMAX 3.3 Vertical CNC Processing Center (YOM ~2015)**
 - Premium vertical milling, drilling, and grinding machine.
 - *Note for buyers: Electro-spindle requires repair/replacement.*
- **BOTTERO TWINEDGE Double-Edged Horizontal Glass Grinding Machine**
 - Complete with 10m infeed table, 30m heavy-duty processing enclosure, and 10m outfeed tracking.
 - Integrated **Triulzi Horizontal Glass Washer** (Model SYA.LEA.2700, YOM 2005) and Selutor RSC-BB-7/80 coolant filtration plant.
- **Benteler Edge Processing Line (YOM 2008)**
 - Automated **tecLine** system featuring Siemens Simatic HMI control , tilt loading table, and Selutor coolant recycling plant. *Control modifications present.*

5. Automated Glass Storage, Cutting & Screen Printing



- **HEGLA KFL-PLUS-300 Automated Glass Loading & Storage System (YOM 2010)**
 - Heavy-load capacity up to 228 Tonnes, max. loading height 3400 mm. Consists of a Hegla overhead gantry crane and 20 heavy racking segments.
- **HEGLA CNC Glass Cutting & Breaking Plant (YOM 2010)**
 - Includes Hegla Optimax Plus cutting table , automated breaking systems, and heavy air-cushion tilting belt tables (LKTR 8).
- **FLEISCHLE SH-3 Screen Printing & Enameling Line (YOM 2001)**
 - Large-scale industrial screen printer line with integrated Bürkle DAL5 2300 applicator , specialized Tesoma drying tunnel/oven , and continuous waste-water treatment system.



Technical Data:

Technical Data:

Control: CNC

Buyer Information:

Condition: Normal wear

Available: Immediately

Sold as:

FAS (Free Alongside Ship -
Incoterm)

VAT: 19 %

Buyers Premium: 18 %

Location: Germany



Images:



1



2



3



4



5



6



7



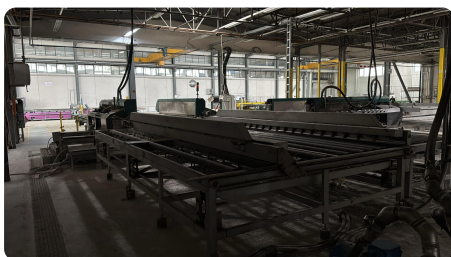
8



9



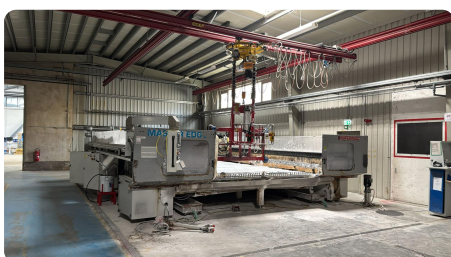
10



11



12



13



A

e

ssets



14



16



18



15

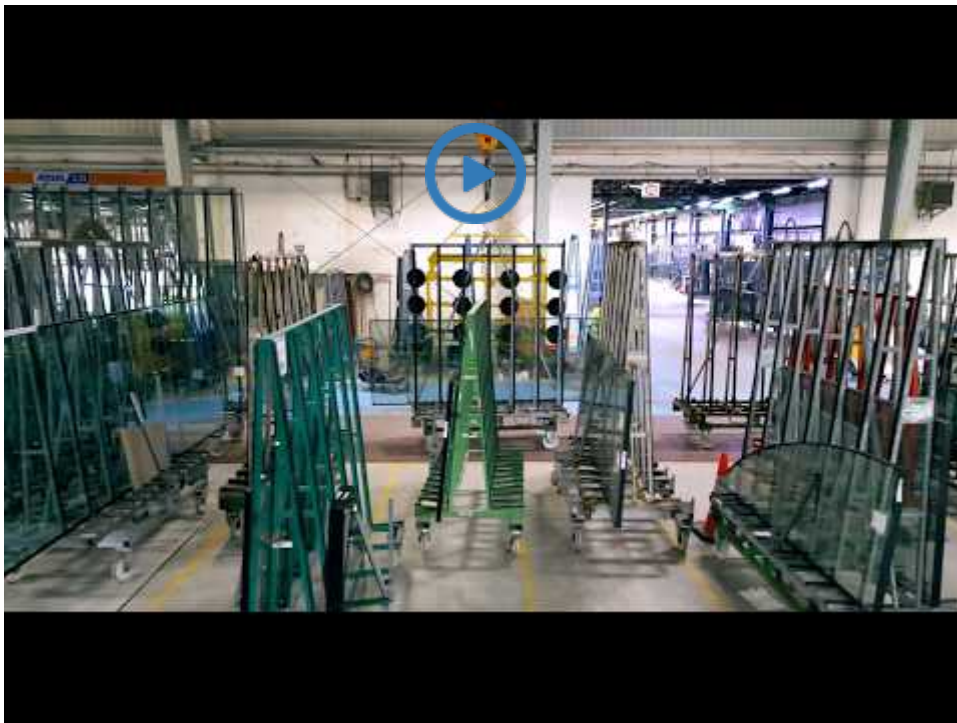


17





Video:







Asset-Trade

Assessment & Sale of Used Assets



Asset-Trade

**Assessment and Sale of Used Assets world
wide**

Am Sonnenhof 16

47800 Krefeld

Germany

Tel.: +49 2151 32500 33