



# Asset-Trade

Assessment & Sale of Used Assets

Ref. Nr.: 126-07011546

## Overview and Technical Data:

**KRONES - Complete KRONES RBG bottling  
Line Beer, Softdrinks 60.000 l**

**KRONES**



Baujahr: Jan. 1987



# Asset-Trade

Assessment & Sale of Used Assets



## Description:

### **Komplette KRONES/ KHS / KETTNER - RBG Abfüllung Line Bier, Softdrinks**

- Kapazität 60.000 Flaschen
- EURO Flaschengröße 0,5 l - Glas

Alles aus:

- Unpacker
- Depalettierer
- H & K Flaschenreinigungsmaschine
- KHS Flascheninspektor
- KRONES Typ VK 2V CF 144 Filler & Etikettiermaschine
- KETTNER Palletizer
- Packer
- APV Plattenwärmetauscher

Weitere Informationen folgen



## Technical Data:

### Technical Data:

Steuerung: CNC

### Buyer Information:

Zustand: Normale Beanspruchung

Verfügbarkeit: Februar

Verkauft als:

EXW (ab Werk - Incoterm)

MwSt.: 19 %

Käuferaufgeld: 15 %

Standort: Deutschland



## Images:



1



2



3



4



5



As

e

ssets



6



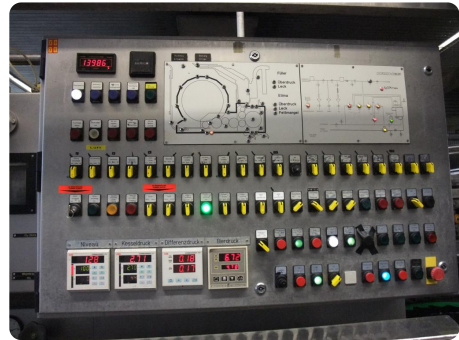
7



8



9



10



11



A



e

assets

12



13



14



15



16



17



A

e

Assets



18



19



20



21



22



23



As

e

assets



24



25



26



27



28



29



A

e

ssets



30



31



32



35



34



AS

e

Assets



36



37



38



39



40



41



As

e

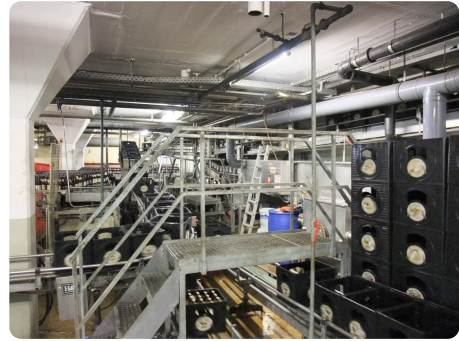
Assets



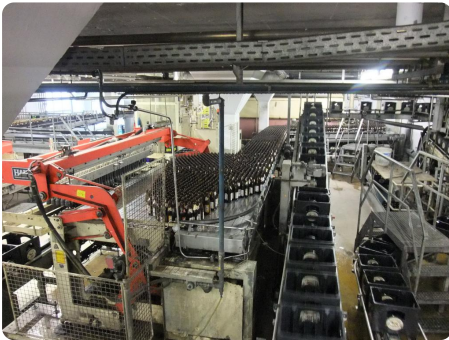
42



43



44



45



46



47



A

e

Assets



48



49

50



51



52



53



A

e

Assets



54



55



56



57



58



59



A

e

Assets



60



61



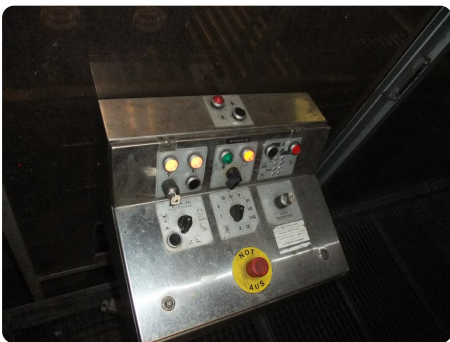
62



63



64



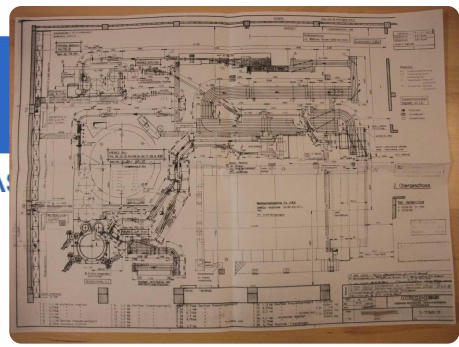
65



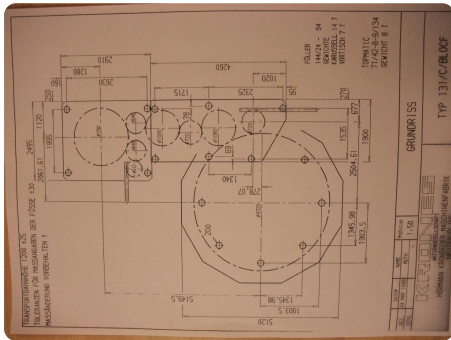
As

e

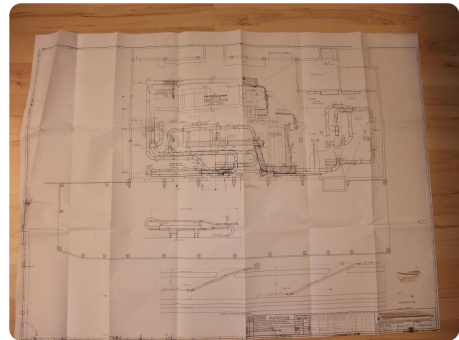
Assets



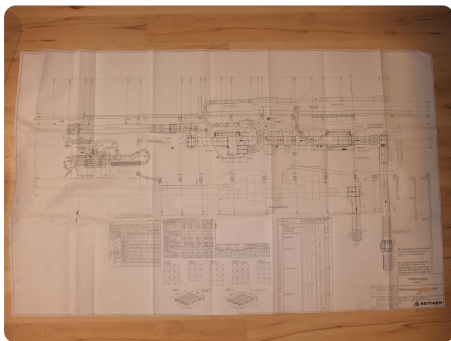
66



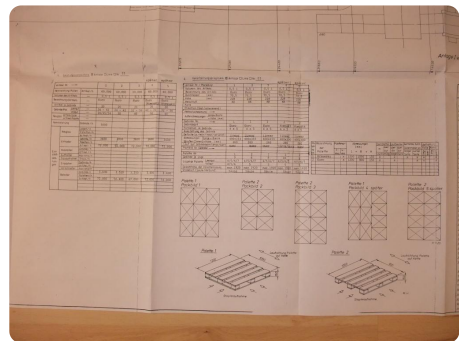
67



68



69



70





# Asset-Trade

Assessment & Sale of Used Assets



**Asset-Trade**

**Bewertung & Vermarktung von  
Industrieanlagen weltweit**

**Am Sonnenhof 16**

**47800 Krefeld**

**Deutschland**

**Tel.: +49 2151 32500 33**