



DOERING GLASS



FACTORY PLANT RADEBURG
DE (DRESDEN) – FLAT GLASS PRODUCTION



product range – basics

single glass	energy saving insulation glazing	additional IGU features
<ul style="list-style-type: none"> tempered safety glass* laminated safety glass* acoustic laminated glass* curved fire resistant anti-reflective silvered-, lacquered-, enamelled*, screen printed* interior applications (doors, partition walls, LED-mirrors, etc.) 	<ul style="list-style-type: none"> <ul style="list-style-type: none"> • IsoStandard no coating • IsoPerform or CLIMAPLUS with coating* low-e low-e + solar control <ul style="list-style-type: none"> • TripleStandard no coating • TriplePerform or CLIMATOP with coating* low-e low-e + solar control 	<ul style="list-style-type: none"> warm-edge spacer maximum day light injury proof glass anti burglary glass noise control fire resistant cross bars patterned/etched/colored (and many more)



RADEBURG DOERING GLASS

EXPERT PARTNERS IN FLAT GLASS PRODUCTS

Insulated glass		
Glass / composition	details	dimension / weight Line 1/ Line 2
Climalte Climapulse Zweifelscheibensolierglas Climatopie Dreifelscheibensolierglas	min. dimension max. dimension max. insulated thickness max. total weight Sealant	180 x 300 mm 2700 x 5000 mm / 3200 x 5000 mm 80 mm / 60 mm 1100 kg / 1000 kg Polysulfid, Silikon (black, manual grey)
Insulating glass in special designs	Securite Alarm Screen (inside Jalousie) Gripping and holding systems (< 710 kg) Steps, edge screen printing Structural Glazing	
Laminated glass		
Glass / composition	details	dimension / weight
Laminated glass (VSG) with PVB-Foil Stadipa, Silencia, Protect EN 356 SentryGlas5000 Stadipa Buldor Plus	min. dimension max. dimension max. laminated thickness max. total weight	300 x 400 mm 2450 (SF 2600) x 5000 mm 60 mm 500 kg
Cut		≤ VSG 66.4
ESG, ESG-HF, TVG		
Glass / composition	thickness	dimension
ESG/ESG-HF Float / Hardcoating: Securita, Securite-HF: 4 - 15 mm ESG/ESG-HF lowE-coating Securita, Securite-HF: 4 - 10 mm	all glass thicknesses 4 mm 5 mm 6 mm 8 / 1 / 12 / 15 mm	min. 200 x 300 mm max. 1500 x 2500 mm max. 2000 x 3500 mm max. 2500 x 5000 mm max. 2800 x 5000 mm
TVG Float / Hardcoating Planidura: 4 - 12 mm TVG lowE-coating Planidura: 4 - 8 mm	all glass thicknesses 4 mm 5 mm 6 mm 8 / 10 / 12 mm	min. 200 x 300 mm max. 1500 x 3500 mm max. 2000 x 4000 mm max. 2500 x 5000 mm max. 2800 x 5000 mm
Screen printing, Emailt		
Glass / composition	thickness	dimension
Screen printing Seralite, Seralite-H	4 / 5 / 6 / 8 / 10 / 12 / 15 mm	min. 200 x 300 mm max. 2400 x 4800 mm
Emailt Emailite, Emailite-H	4 / 5 / 6 / 8 / 10 / 12 / 15 mm	min. 200 x 300 mm max. 2200 x 4800 mm
Custom color matching and mixing according to RAL, NCS, Pantone, etc.		



Tägl. 53t
Glas-
verarbeitung

140.000
m²
jährliche VSG -
Produktion

250.000 m²
jährliche ESG -
Produktion

120
Mitarbeiter

14.000 m²
Produktionsfläche


120.000 m²
jährliche ISO -
Produktion

FACTORY RADEBURG – MAXIMUM CAPACITY


- **Capacity ISO Production (2 ISO Lines)** max 500 m² per Shift per Line
- **Capacity Lamination Line (1 Line)** max 350 m² per Shift (or 100 units per Shift) – 600 m² per Day production
- **Capacity Grinding Lines (2 Lines)** max 1000m lfm per Shift
- **Capacity Cutting Lines (3 Lines)** max 90 BM Units (~ 1800 m²) per shift / 10 BM Units Lami per Shift



CUTTING AREA RADEBURG
3 LINES



CUTTING AREA
RADEBURG
VSG (LAMI) CUT
LINE 1

The image shows a large industrial facility, likely a steel mill or fabricator. In the center, a yellow gantry system is positioned over a concrete floor. A bright green line is painted on the floor, extending from the foreground towards the gantry. To the left, there is a yellow safety fence. In the background, a large white door or wall is visible, with a control panel and a sign that reads '1010'. To the right, there is a large structure covered in white plastic, with 'abatis' branding visible. The overall scene is well-lit, suggesting an indoor industrial environment.

CUTTING AREA
RADEBURG
CUT LINE 2



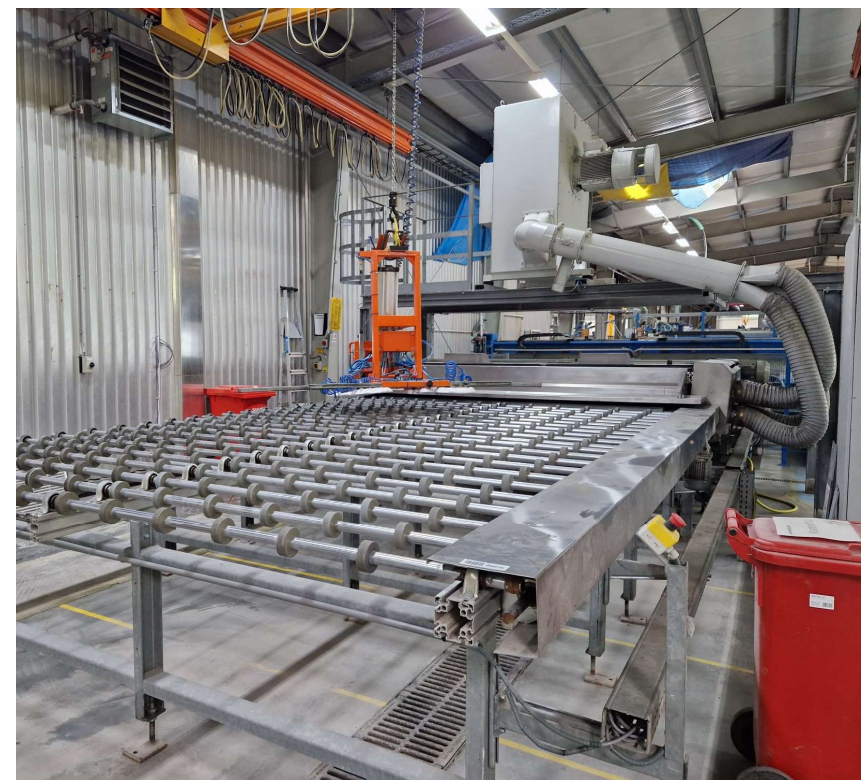
CUTTING AREA
RADEBURG
CUT LINE 3

Wagensicherung

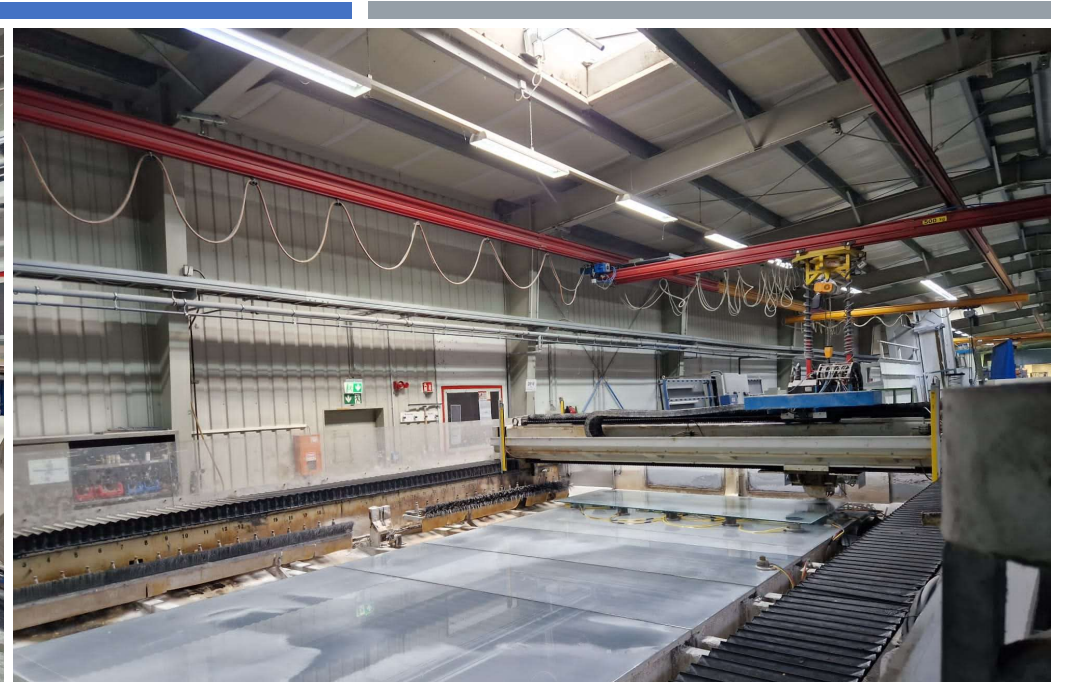
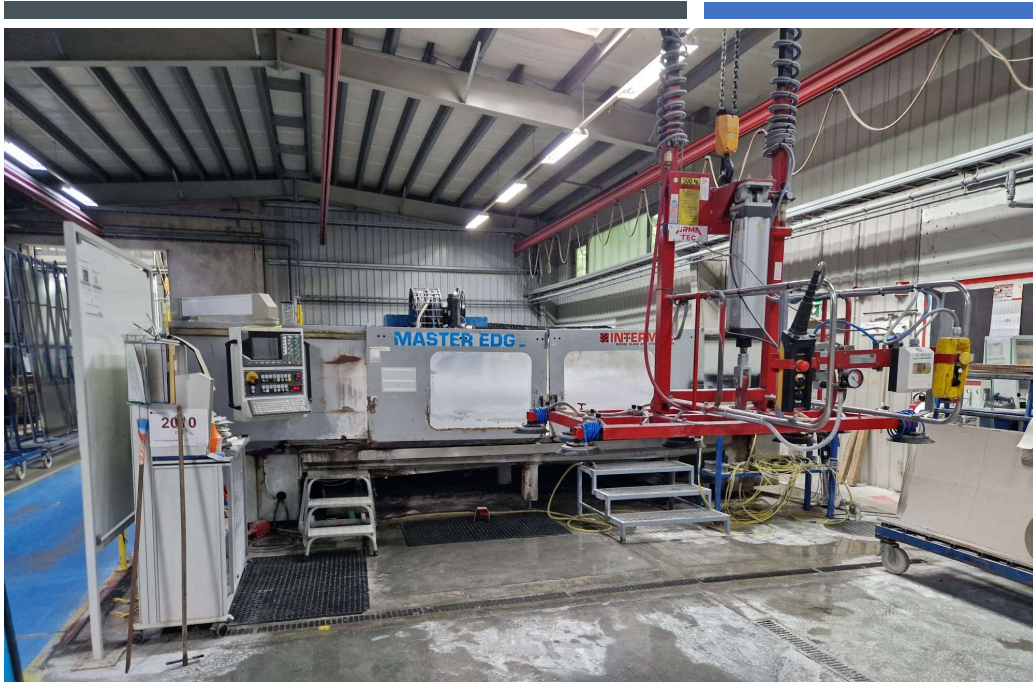
Zuschnitt



GRINDING LINE LINE 1



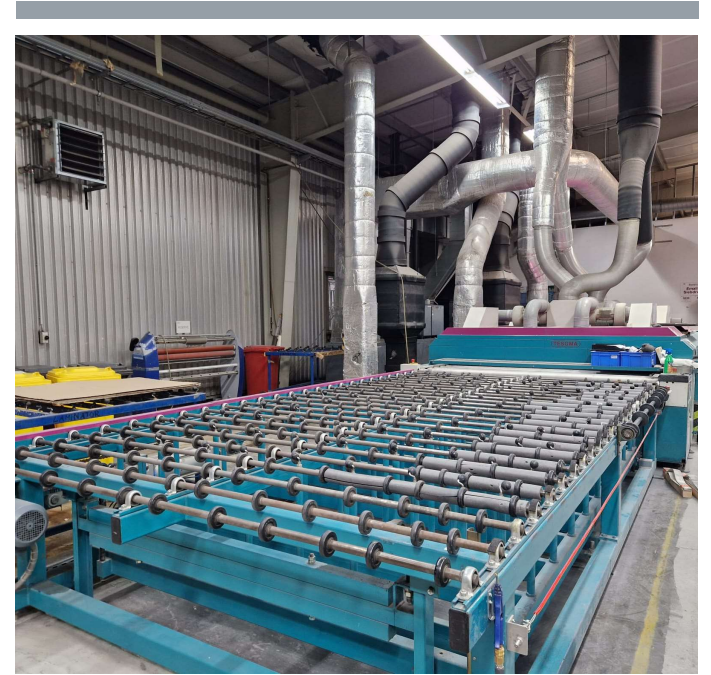
GRINDING LINE LINE 2



CNC PROCESSING

LAMINATION LINE + AUTOCLAVE





SCREENPRINT / ENAMEL LINE



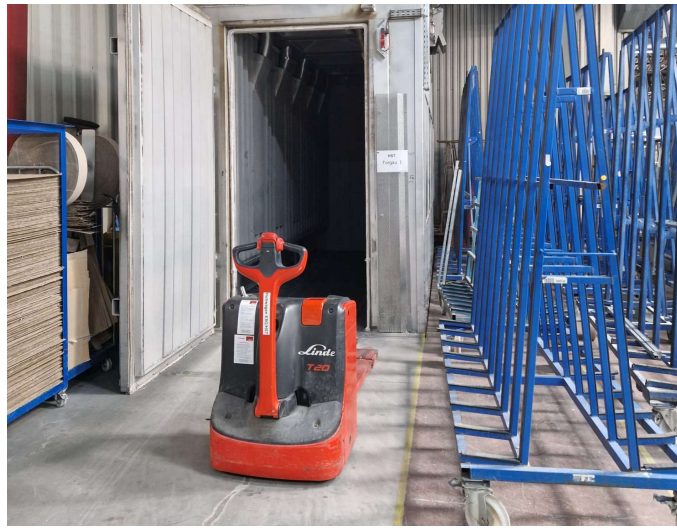


TEMPERING LINE 1





TEMPERING LINE 2



HEAT SOAK OVENS (3)



ISO LINE 1 + 2





PACKING AREA



SPECIAL PRODUCTS +
QS POINT

